

REXENSE

ZigBee/USB adopter

RD1100+



Zhejiang Raying IoT Technology Co., Ltd

Copyright

The information contained in this document is the proprietary information of Zhejiang Rexense Technology Co., Ltd. (hereinafter referred as Rexense). All rights reserved. Without the written permission of the company may not to the company's employees, agents, partners or licensing party disclose to any third party other than the content of the document, in any form without authorization, copying or dissemination of this document. If the user violates copyright protection, the company has the right to the resulting legal responsibility shall be investigated for users.

Version Update

V1.0.0 2017/3/7 Preliminary

CONTENT

1. Overview.....	3
1.1. Supported oprating system.....	3
2. Rated parameter.....	3
3. Operating Conditions.....	4
4. Other data.....	4
5. Firmware Upgrades.....	4
6. Driver Installation and Operation.....	4
7. Custom Firmware Development.....	10
8. Contacts.....	10

1. Overview

D1100+ USB adopter has USB2.0 standard interface with power supply through USB. It is easy to be connected to main device(for example, PC,). With USB serial device driver, the main device can communicate with inner Zigbee module via VCOM, actually works as ZigBee-RS232 adopter. There is inner enhanced Zigbee module in the adopter, which is usually used with PC and for the filed adjustment or presentation.

1.1.1.1 Supported Operating Systems

- Windows 98SE
- Windows XP
- Windows 2000
- Windows 7
- MAC OS-9
- MAC OS-X
- Linux

2. Rated Parameters

Parameter	Min	Max	Unit	Testing condition
Supply Voltage Vdd	3.0	5.25	V	
Voltage on any pin	-0.3	3.6	V	
Storage Temperature	-55	125	°C	

Table 1: Absolute maximum ratings

Notes:The absolute maximum ratings given above should under no circumstances be violated. Exceeding one or more of the limiting values may cause permanent damage to the device.

3. Operating Conditions

Typical values at 5V 25°C.

Parameter	Range	Unit
Current (TX)	125	mA
Current (RX)	36.0	mA
Ambient temperature	25	°C
Max. Output power	-9 to +19.5	dBm
RX Sensitivity	-98 to -100	dBm
Max RF Data Rate	250	Kbps

Table 2: Operating Condition

4. Other data

For further technical information, including radio performance, please refer to the Product Manual of REX3SP Module at www.rexense.com.

For more information on ZigBee® compliance and the AT command interface firmware, please refer to the latest AT command dictionary and the REX3SP user guide at www.rexense.com.

5. Driver Installation and Operation

Users need to download the driver named “CP210x_VCP_Win_XP_S2K3_Vista_7” at www.rexense.com. After successful installation, the system will create a VCOM port, through which the system can access to the serial port of the module REX3SP. For more information of the module (REX3SP), please go to www.rexense.com to download documents.

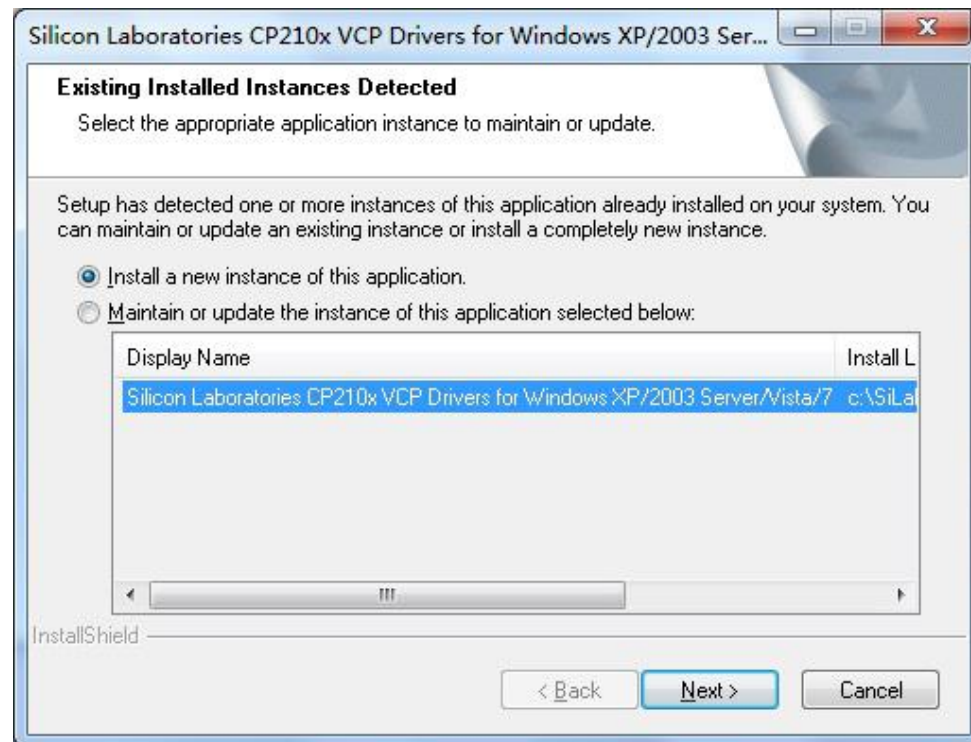
“CP210x_VCP_Win_XP_S2K3_Vista_7” driver Installation:

WEB: www.rexense.cn

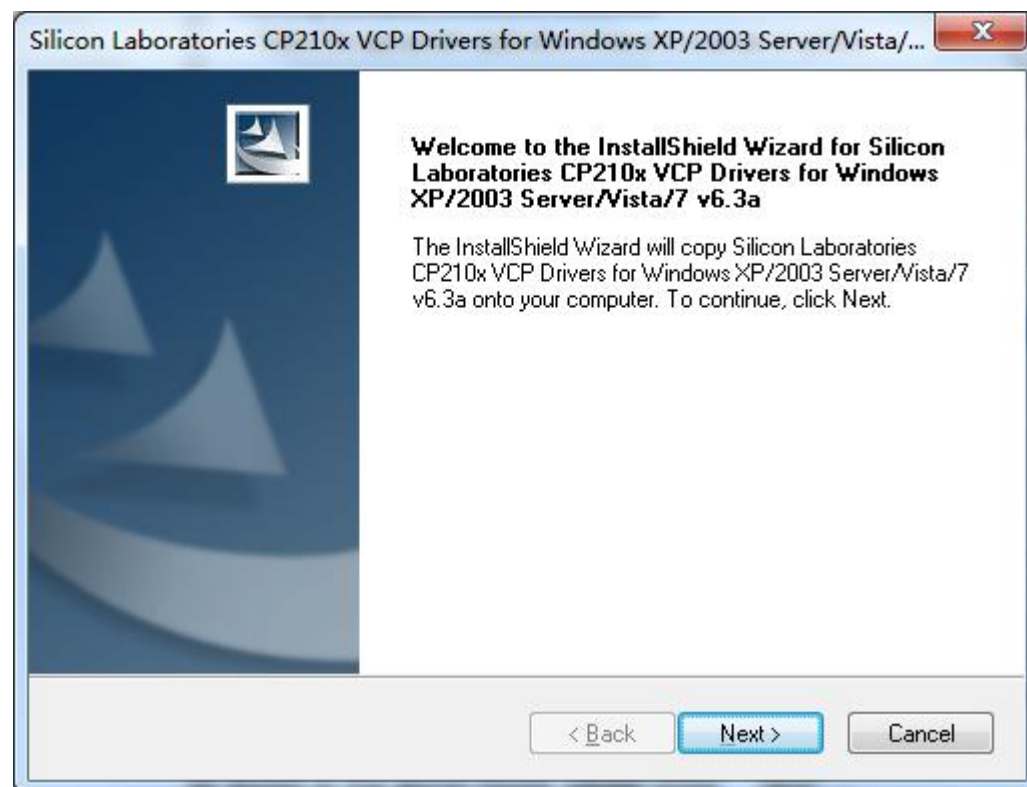
TEL: 4008-699-633

FAX: +86-571-87987620

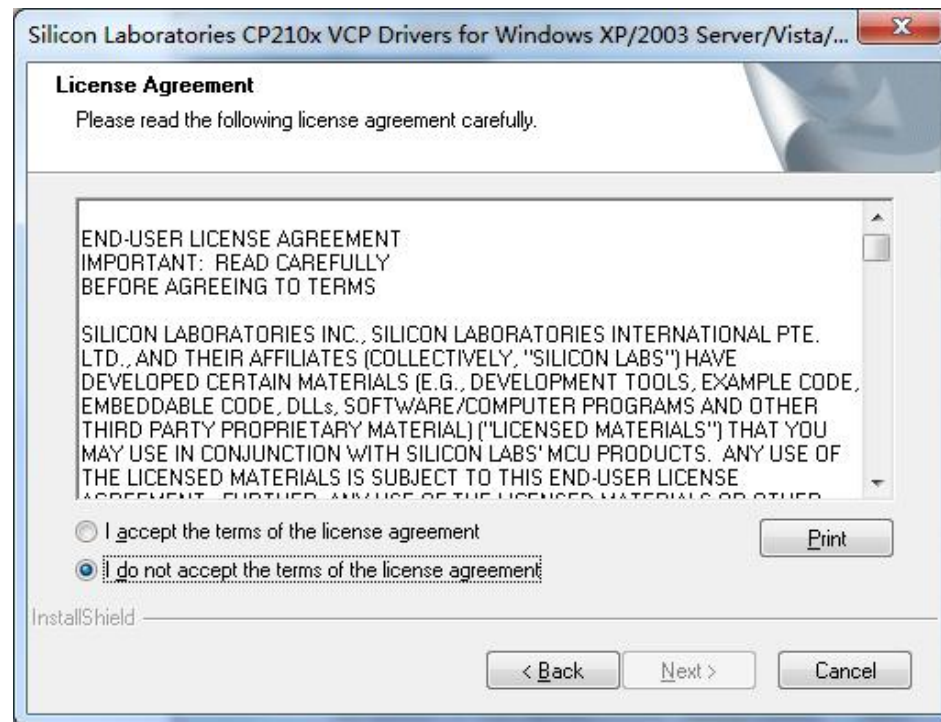
6.1 Windows 9x/XP/2k/7 driver installation



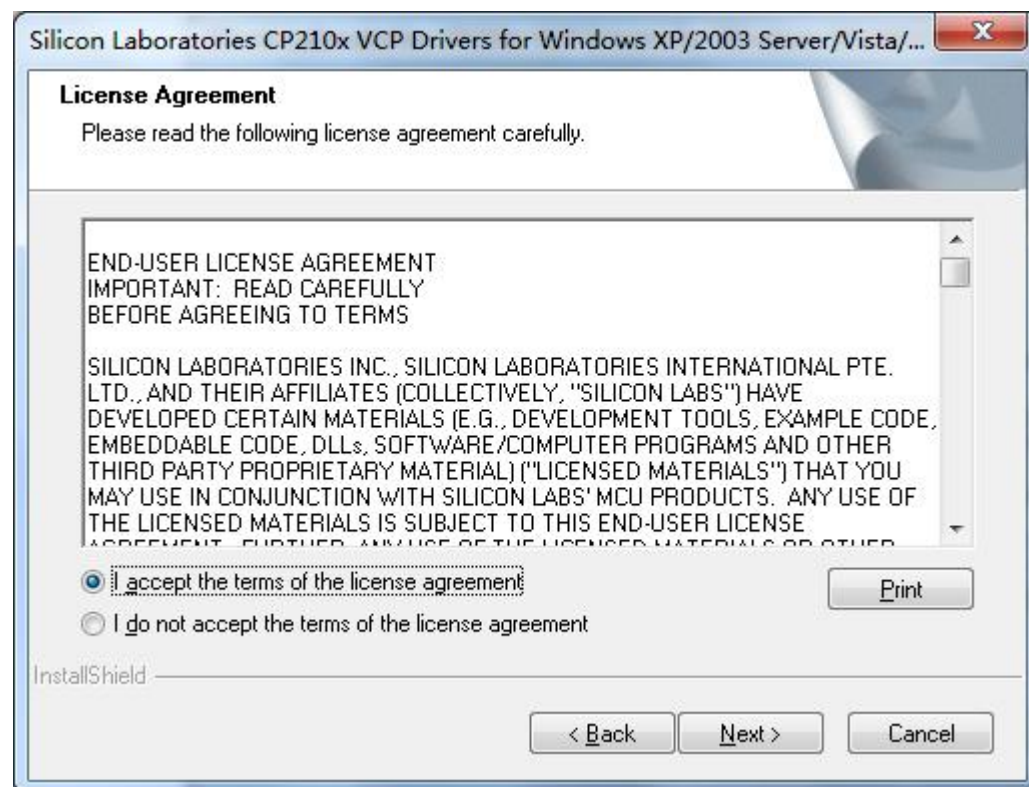
Refers to picture above, press “Next” to continue;



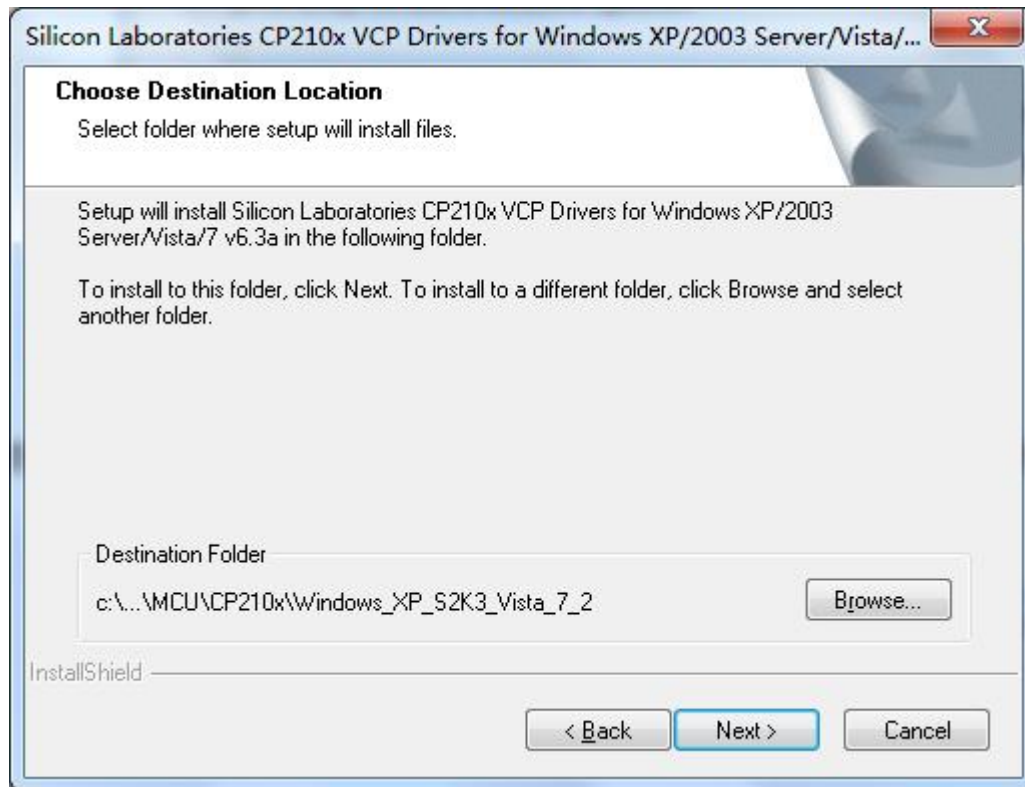
Refers to picture above, press “Next” to continue;



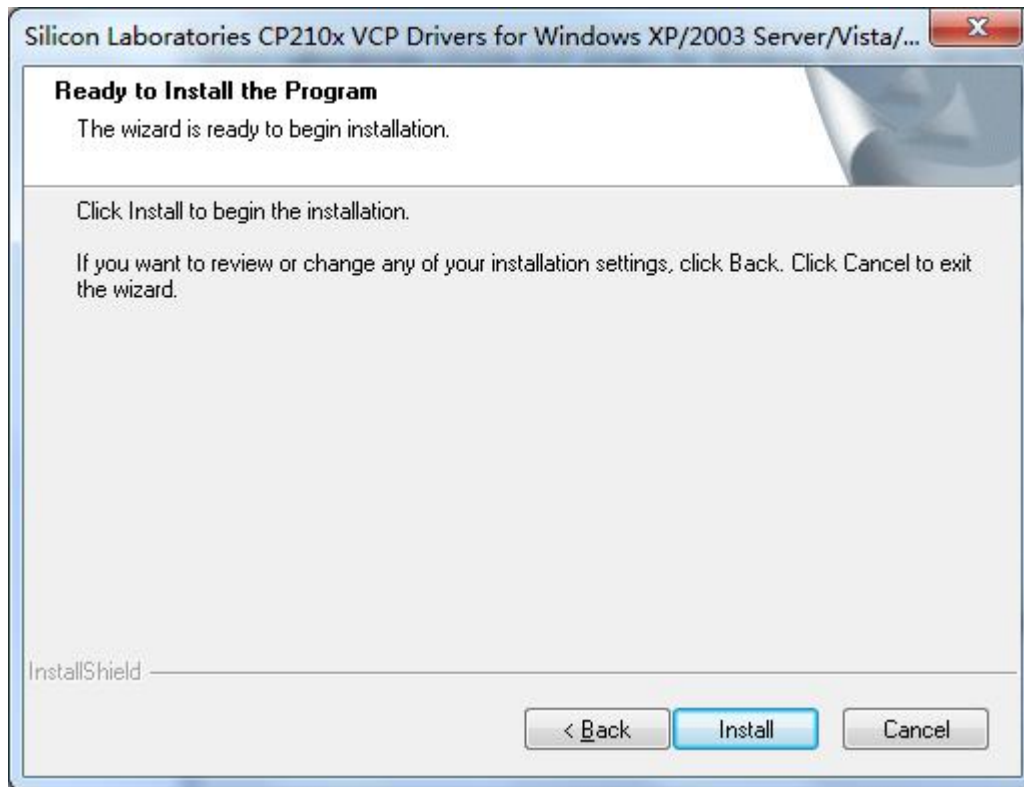
Refers to picture above,select “I accept the terms of the license agreement” to continue;



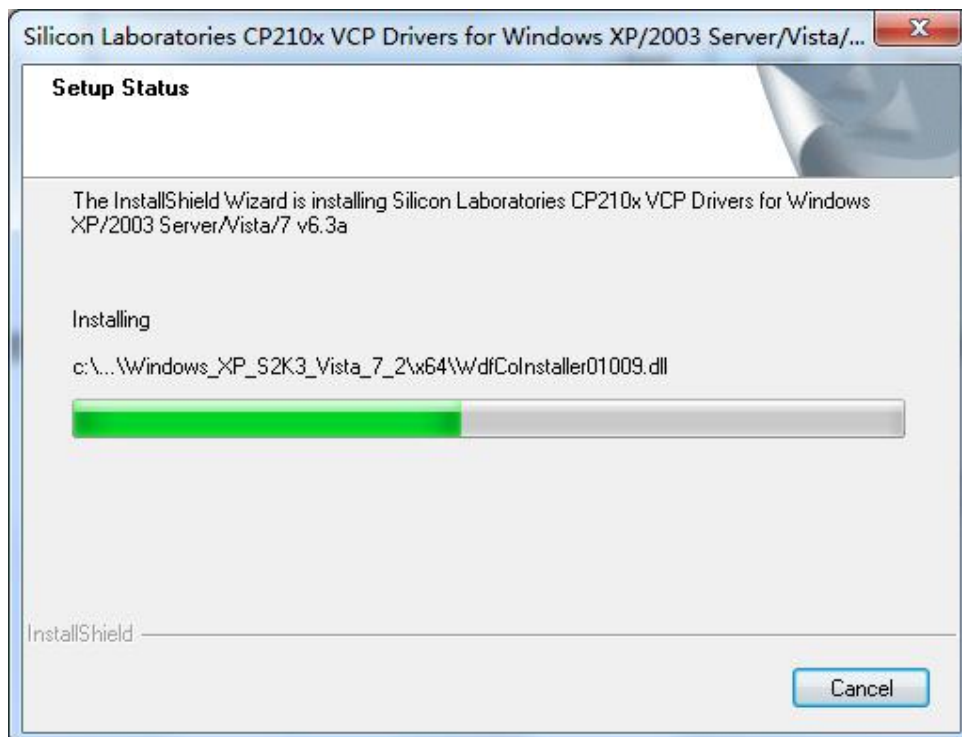
Refers to picture above, press “Next” to continue;



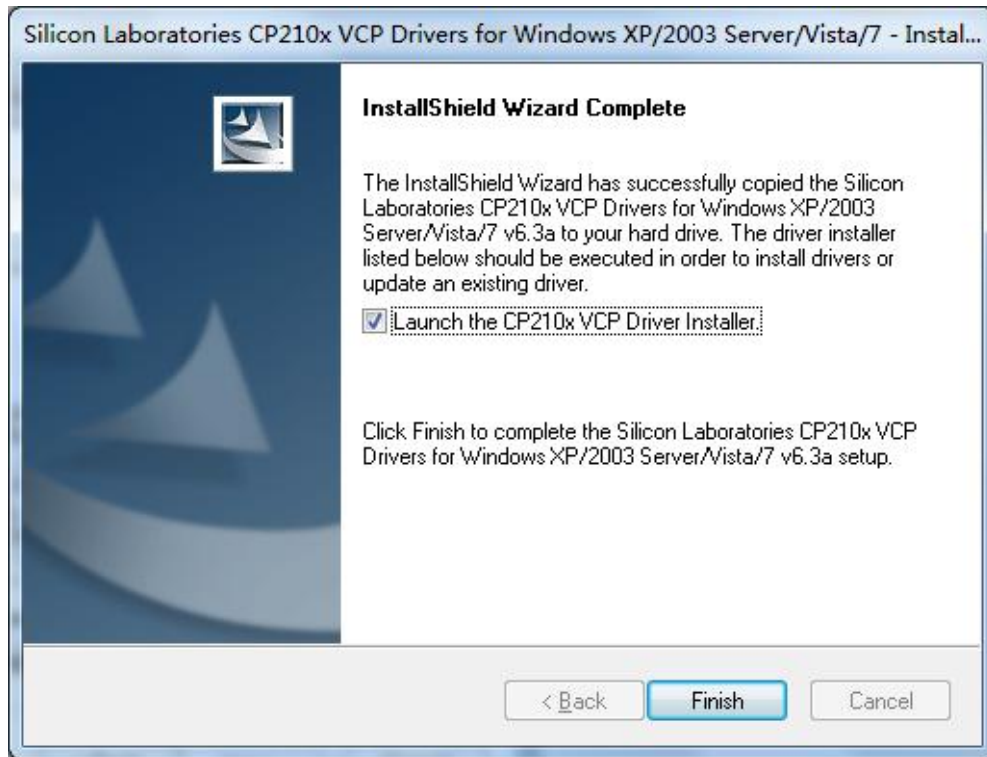
Select destination folder for the the driver, press “Next” to continue;



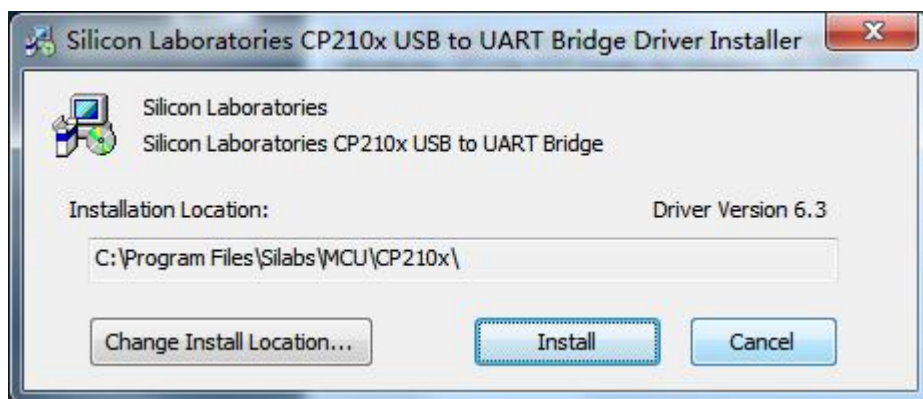
Press "Install" to continue;



When the picture below comes, the system will note that the installation documents, CP210x_VCP_Win_XP_S2K3_Vista_7, have been copied to the user's hard disk successfully. Please press Launch the CP210x VCP Driver Installer to finished the installation.



Click "Finish", the dialog box below comes;



Click "Install" to complete the installation of driver.

7. Custom Firmware Development

There are two ways of custom firmware development available:

- Through the USB-Serial port, users are able to update IAP upgrade on the base that there is Bootloader program in the ZigBee module. Users can send the firmware to perform the upgrade according to the upgrading commands of the Bootloader program. User can upgrade command according to BootLoader and via sending firmware program.
- Or, when there is no BootLoader program inside module, development tool Jlink and Stack of EFR32 are needed. Through commander of SILABS, firmware program is able to be burned to EFR32 chips of the module or downloaded via IAR for ARM developing environment.

8. Contact Us

ZHEJIANG REXENSE TECHNOLOGY CO., LTD

Address: Room 105, No.7 Cuibai Road, Xihu District, Hangzhou 310012 P.R.China.

Tel: +86-571-85395623

Fax: +86-571-87987620

Website: www.rexense.com

E-mail: intl@rexense.com; support@rexense.com

FCC WARNING STATEMENT

Changes or modifications not expressly approved by the party responsible for compliance could void the user's authority to operate the equipment. This equipment has been tested and found to comply with the limits for a Class B digital device, pursuant to Part 15 of the FCC Rules. These limits are designed to provide reasonable protection against harmful interference in a residential installation. This equipment generates uses and can radiate radio frequency energy and, if not installed and used in accordance with the instructions, may cause harmful interference to radio communications. However, there is no guarantee that interference will not occur in a particular installation. If this equipment does cause harmful interference to radio or television reception, which can be determined by turning the equipment off and on, the user is encouraged to try to correct the interference by one or more of the following measures:

- - Reorient or relocate the receiving antenna.
- - Increase the separation between the equipment and receiver.
- - Connect the equipment into an outlet on a circuit different from that to which the receiver is connected.
- - Consult the dealer or an experienced radio/TV technician for help.

This device complies with Part 15 of the FCC Rules. Operation is subject to the following two conditions:

- (1) This device may not cause harmful interference, and
- (2) This device must accept any interference received, including interference that may cause undesired operation.