

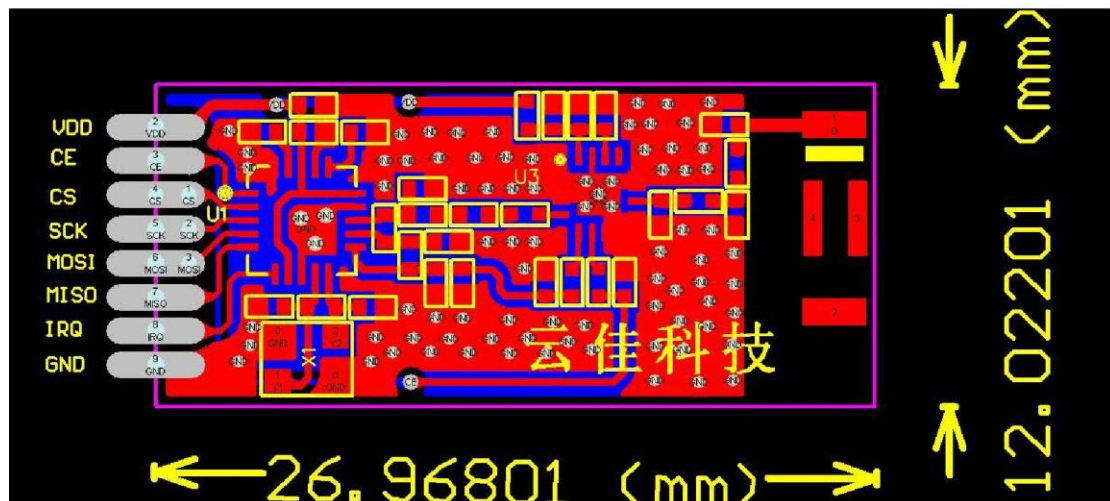
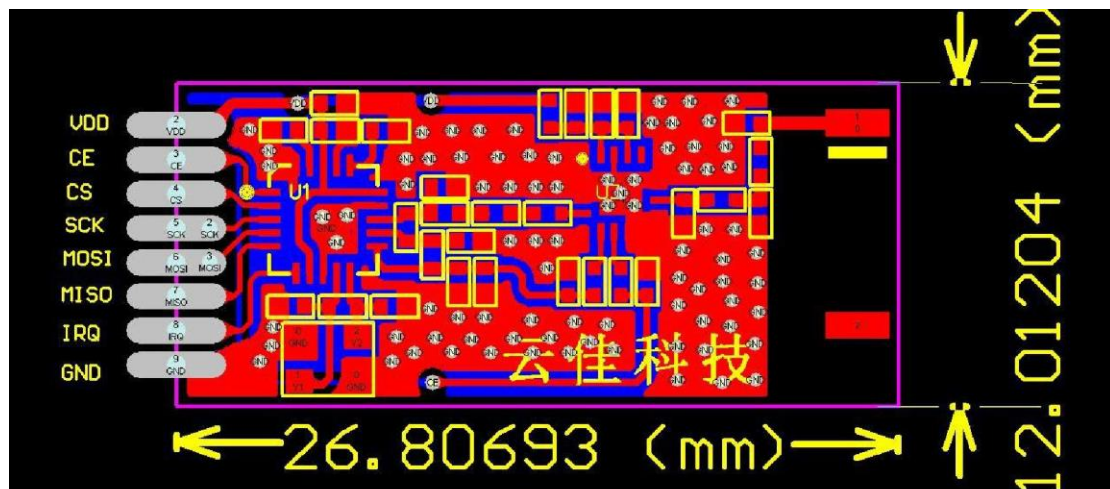
Manufacturer: SUNS Electric(Zhangzhou) Co.,Ltd.
Address: No.169 Wengjiao Road, Jiaomei Town, Taishang Investment Zone, Zhangzhou, Fujian
Province, P.R.China

Name : wireless module
Trade Mark: SUNS
Model: NRF24L01SMD+PA+LNA, NRF24L01SMD+PA

Product characteristics:

- 1.2.4G global open ISM band, license free use
- 2 support for the data reception of the six channel, 2Mbit/s makes high quality VoIP possible
- Peak current at 3.2MBPS receiving rate 25mA
- 4 peak current @0dBm output at 2Mbit/s rate 45mA
- 5 power down mode 400nA
- 6 power consumption in standby mode 32uA
- 7.130us fast switching and wake-up time
- 8 can work at 2.2Vto3.6V low voltage
- 9.19mm*12mm ultra small size
- 10 .module pin standard patch 1.27mm

Application: remote control, telemetry, wireless meter reading, guard monitor system, industrial data acquisition system, wireless tag, identification, contactless smart card, small RF wireless data terminal, fire safety system, wireless remote control system, biological signal acquisition, wireless data communication, wireless 422/485 232.



FCC Statement

This device complies with part 15 of the FCC Rules. Operation is subject to the following two conditions: (1) This device may not cause harmful interference, and (2) this device must accept any interference received, including interference that may cause undesired operation.

Changes or modifications not expressly approved by the party responsible for compliance could void the user's authority to operate the equipment.

FCC Radiation Exposure Statement

This modular complies with FCC RF radiation exposure limits set forth for an uncontrolled environment. This transmitter must not be co-located or operating in conjunction with any other antenna or transmitter.

If the FCC identification number is not visible when the module is installed inside another device, then the outside of the device into which the module is installed must also display a label referring to the enclosed module. This exterior label can use wording such as the following: "Contains Transmitter Module FCC ID: 2AODW-NRF24L01SMD Or Contains FCC ID: 2AODW-NRF24L01SMD"

When the module is installed inside another device, the user manual of the host must contain below warning statements;

1. This device complies with Part 15 of the FCC Rules. Operation is subject to the following two conditions:

(1) This device may not cause harmful interference.

(2) This device must accept any interference received, including interference that may cause undesired operation.

2. Changes or modifications not expressly approved by the party responsible for compliance could void the user's authority to operate the equipment.

The devices must be installed and used in strict accordance with the manufacturer's instructions as described in the user documentation that comes with the product

Any company of the host device which install this modular with limit modular approval should perform the test of radiated emission and spurious emission according to FCC part 15C : 15.249 and 15.209 requirement, Only if the test result comply with FCC part 15C : 15.249 and 15.209 requirement, then the host can be sold legally.