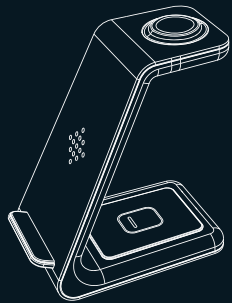
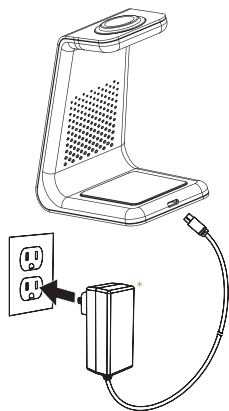


T3

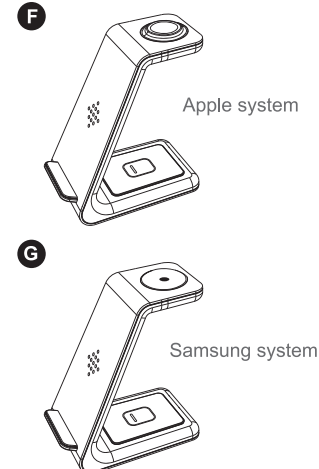
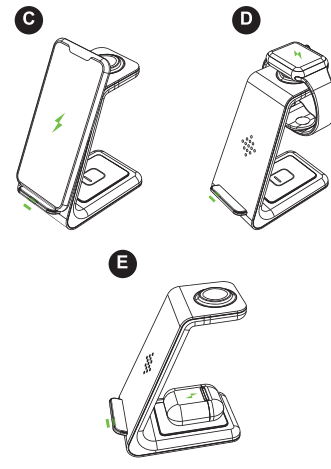
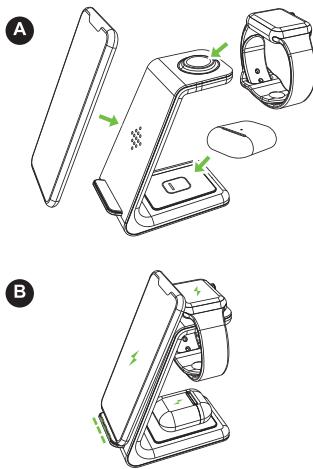


### 3-in-1 wireless charging station

USER MANUAL



\* It is suggested to use 18W 9V/2A adapter.



### 3-in-1 wireless charging station

T3

#### IMPORTANT SAFETY INSTRUCTIONS

Before Using the unit, please read the user manual carefully

\* Do not store device in high-temperature environment, including heat caused by intense sunlight or other forms of heat. Do not place device in fire or other excessively hot environments. Exposure to fire or temperature above 212°F (100°C) may cause explosion.

\* Do not use the wireless charger in excess of its output rating. Overloading outputs above rating may result in a risk of fire or injury to persons.

\* Do not expose the wireless charger to rain or snow.

\* Do not modify, repair or disassemble the unit, if so, please contact the manufacturer.

Switch off the wireless charger when not in use. The wireless charger will automatically switch off when disconnected from its wall charger.

#### Applicable Devices:

##### Phone:

- Samsung Galaxy S21/S21+/S21 Ultra/ S20/S20+/S20 Ultra/Note 20 Ultra
- Samsung Galaxy S10/ S10 Plus/ S10e/ Note 10/ S8/ S8 Plus/ Note 8/ S7/ S7 Edge /S6Edge Plus/Note 5
- iPhone 13 Pro Max(Horizontal)/13Pro /13 iPhone 12 Pro Max(Horizontal)/12 Pro /12/se 2/iPhone11 Pro Max/11 Pro /11 /XS Max/XS/XR/X/8 Plus/8
- More cell phones compatible with Qi wireless charge.

##### Watch:

- Samsung Watches: Galaxy Watch 4 Galaxy Watch 3/Gear S5/S4/S3, etc
- Apple Watch SE/7/6/ 5/4/3/2; Not suitable for Apple Watch Series 1.

##### Earphones:

- Samsung Galaxy Buds2/Buds Por /Buds Live/Buds Plus +/Airpods Pro /Airpods 3/Airpods 2 and other Qi charging earphones

There is a distinction between Apple system and Samsung system.

Please check whether the received product is apple system or Samsung system. If you purchase Apple system product, you can charge Apple watch, but not Samsung watch. If you buy Samsung system product, you cannot charge Apple watch.

#### Please Note:

1. How to distinguish-Apple and Samsung systems? Please see Figure F and Figure G
2. Please remove your phone case before charging if the thickness > 5 mm, or if the phone case will make your phone size longer than 164 mm.
3. Only use certified QC 3.0 Charging Wall Adapter to power the device, do not plug into computer USB port or any other non certified USB port.

4. Place your qi-enabled device accurately in the wireless charging area when charging.

5. a QC3.0 charging adapter is required when charging 3 devices simultaneously or want to have a fast charging effect.

6. Make sure to disconnect the device from power when cleaning.

7. It is normal and safe to hear a humming noise when very close to the charger. It means that this wireless charger is adjusting its temperature to achieve a more efficient charging speed.

8. If your device can not be fully charged, this may due to high environmental temperature, please recharge after the temperature is lowered. Our charger has temperature control to safe guard your device when charging.

#### Q&A:

If the LED light flashes and the wireless charging dock doesn't work how can I deal with this problem?

- 1. Make sure your device supports the Qi wireless charging function before using this wireless charger.
- 2. Check if you use the QC3.0 adapter to power our wireless charger.
- 3. Test with other USB cables.
- 4. Check whether your devices' case comes with metal objects. Magnetic and metal attachments will make an LED flash and prevent charging.

Thank you for choosing our products

## FCC WARNING

This device complies with part 15 of the FCC Rules. Operation is subject to the following two conditions: (1) this device may not cause harmful interference, and (2) this device must accept any interference received, including interference that may cause undesired operation.

Any changes or modifications not expressly approved by the party responsible for compliance could void the user's authority to operate the equipment.

NOTE: This equipment has been tested and found to comply with the limits for a Class B digital device, pursuant to Part 15 of the FCC Rules. These limits are designed to provide reasonable protection against harmful interference in a residential installation. This equipment generates, uses and can radiate radio frequency energy and, if not installed and used in accordance with the instructions, may cause harmful interference to radio communications. However, there is no guarantee that interference will not occur in a particular installation.

If this equipment does cause harmful interference to radio or television reception, which can be determined by turning the equipment off and on, the user is encouraged to try to correct the interference by one or more of the following measures:

- Reorient or relocate the receiving antenna.
- Increase the separation between the equipment and receiver.
- Connect the equipment into an outlet on a circuit different from that to which the receiver is connected.
- Consult the dealer or an experienced radio/TV technician for help.

To maintain compliance with FCC's RF Exposure guidelines, This equipment should be installed and operated with minimum distance between 20cm the radiator your body: Use only the supplied antenna.