



# Quick Start Guide



## Package Components

Due to improvement in better quality and performance of the product, the real components are subject to change without notice.

### Bundle



## External Appearance

### External Appearance



### Description

- Full HD Camera**  
To connect with a Full HD camera
- HD Camera**  
To connect with a HD camera
- Speaker**  
Voice guidance and audio out put
- SD Card Slot**  
Insert a SD card
- Status LED**  
Shows the operating status
- WiFi/GPS LED**  
Shows WiFi, GPS connection  
GPS detection : Blue blinking  
GPS fix : Blue on  
WiFi connection : Red on
- Reset Button**  
To reset the DVR

## External Appearance

### External Appearance



### Description

- Power Cable**  
To connect a power cable
- GPS**  
To connect a external GPS
- Ext. MIC**  
To connect a external MIC
- Lens**  
Lens
- Dual sided tape**  
Dual sided tape may be used to attach camera on the window shield
- Cable**  
To connect with a DVR box
- Angle regulator**  
To adjust camera angle

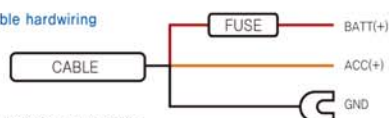
## Recording Guide

### Recording type

There are 3 types of recording types based on folder type.  
 -Drive : Store video files made in driving.  
 -Event : Store video files made when there are impacts in driving or parking.  
 -Motion : Store video files made when there are movements in parking.  
 One file size is 20~60sec. If each folder is full, it will be rewritten after deleting the oldest files first.

## Power Cable Hardwiring

### Power cable hardwiring



- Use the hardwire power cable.

#### BATT(+) (red color)

Connect the red wire cable to permanent power fuse box. (Ex.: emergency lamp, dome light, tail light etc.)

#### ACC(+) (yellow color)

Connect the yellow cable to the fuse that gets power through the ignition. (Ex.: cigarette lighter, audio)

#### GND (black color)

Connect the black cable to the vehicle chassis or vehicle bolts.



## LED Operation

	REC(LED1)	GPS(LED2)		REC(LED1)	GPS(LED2)
Recording	blue blinking	off	WiFi setting	off	red on
GPS connect	blue blinking	blue blinking	FW upgrade	blue blinking	blue blinking
GPS fixed	blue blinking	blue on	Event	blue blinking	blue blinking

## Notice

### Notice

This equipment has been tested and found to comply with the limits for a Class B digital device, pursuant to part 15 of the FCC Rules. These limits are designed to provide reasonable protection against harmful interference in a residential installation.

This equipment generates, uses and can radiate radio frequency energy and, if not installed and used in accordance with the instructions, may cause harmful interference to radio communications.

However, there is no guarantee that interference will not occur in a particular installation. If this equipment does cause harmful interference to radio or television reception, which can be determined by turning the equipment off and on, the user is encouraged to try to correct the interference by one or more of the following measures:

- Reorient or relocate the receiving antenna.
- Increase the separation between the equipment and receiver.
- Connect the equipment into an outlet on a circuit different from that to which the receiver is connected.
- Consult the dealer or an experienced radio/TV technician for help.

#### CAUTION :

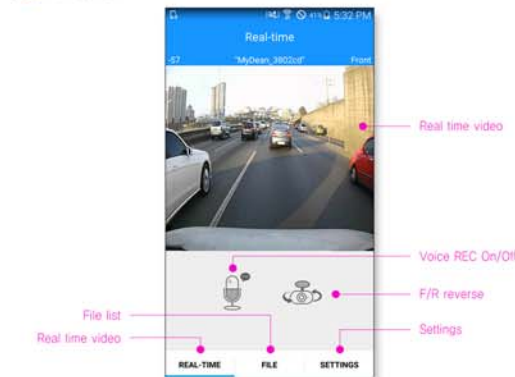
Changes or modifications not expressly approved by the party responsible for compliance could void the user's authority to operate the equipment.

#### FCC RF Radiation Exposure Statement:

This equipment complies with FCC RF radiation exposure limits set forth for an uncontrolled environment. This equipment should be installed and operated with a minimum distance of 20 cm between the radiator and your body. This transmitter must not be co-located or operating in conjunction with any other antenna or transmitter.

## Main Functions

### Main Screen



### Real time video

- To check real time video.
- To On/Off voice recording.
- To reverse front / rear video.

### Video file list

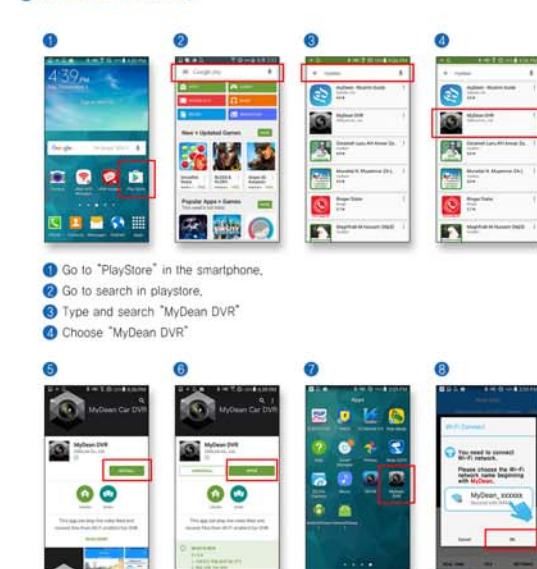
- To check recorded video files.
- To download video files to your smartphone.
- To play the downloaded video files.

### Settings

- To configure various settings, or change WiFi password.

## APP Installing (Android)

### Android APP Installing



- Go to "PlayStore" in the smartphone.
- Go to search in playstore.
- Type and search "MyDean DVR"
- Choose "MyDean DVR"

- Install the DVR APP by clicking "Install" button.
- If install is successful, you can see "MyDean DVR" icon in main screen.
- Open the DVR APP by clicking "MyDean DVR" icon
- If you open the APP, you can see DVR lists. Choose one of them and connect it.

# APP Installing (iOS) ..... ⑨      WiFi Connection with DVR (Android) ..... ⑩      WiFi Connection with DVR (iOS) ..... ⑪      WiFi Connection with DVR (iOS) ..... ⑫

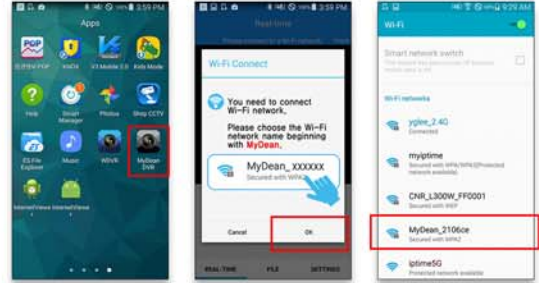
## ⑨ iOS APP Installing



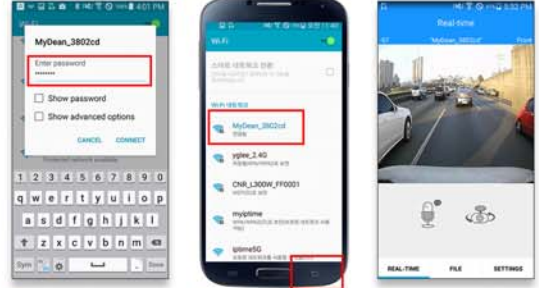
- 1 Go to "AppStore" in the smartphone.
- 2 Go to search in APP Store.
- 3 Type and search "MyDean DVR"
- 4 Click download.



- 5 Download and install the MyDean DVR APP
- 6 If install is successful, you can see "MyDean DVR" icon in main screen.
- 7 If you open the APP, you can see DVR lists, Choose one of them and connect it.



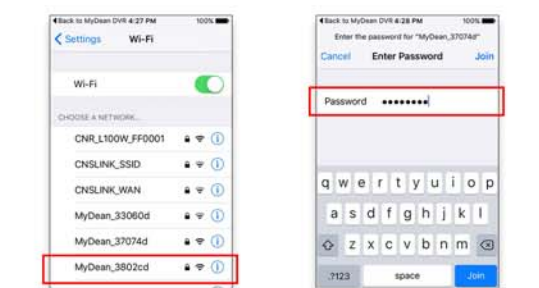
- 1 Click "MyDean DVR" icon in the main screen.
- 2 Click "OK" when WiFi connection screen pops up.
- 3 Choose "MyDean\_XXXXXX" in the searched list.



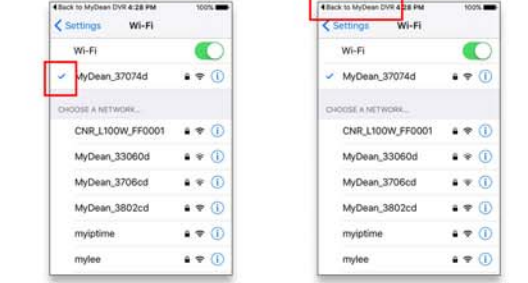
- 4 Input password and click connection button.
- 5 If WiFi is connected, click the backward button (initial password is 12345678) of smartphone.
- 6 Real time video screen will be displayed.



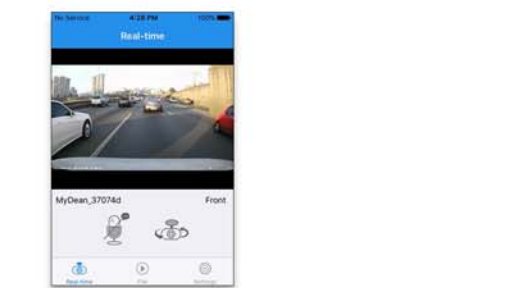
- 1 If WiFi setting screen is displayed, click "OK"
- 2 If WiFi is off, turn on the WiFi



- 3 Choose "MyDean\_XXXXXX" in the searched list.
- 4 Input password and click connection button.



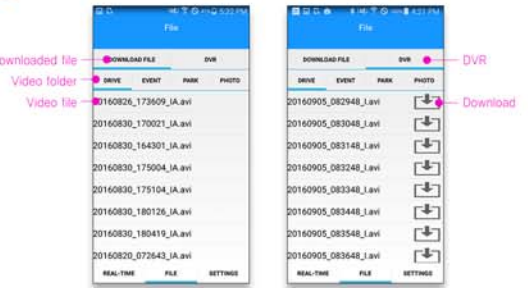
- 6 If WiFi is connected, you can see "v" mark on the top.
- 7 Click "return to MyDean DVR" on the top line.



- 8 If WiFi is connected with DVR, real time video will be displayed.

## ⑬ Recorded File List

### ⑬ File List



### ⑬ Recorded File List (downloaded file)

- It displays downloaded file list to smartphone.
- Folders have driving/event/parking/photo folders.
- Click the file in each folder to play.
- File storing folder : Internal memory / MyDean/

### ⑬ Recorded File List (DVR)

- It displays files stored in DVR.
- Folders have driving/event/parking/photo folders.
- Click the file in each folder to play.
- If you click download icon next to the file, the file will be downloaded in your smartphone.
- Front and rear video files are downloaded separately.

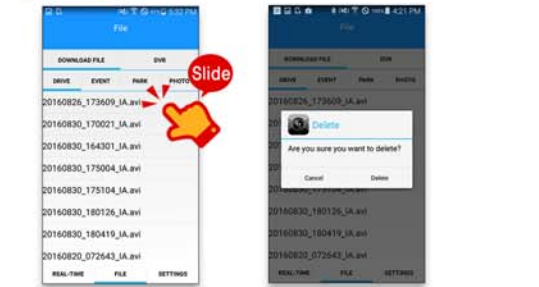


## ⑭ Video Playback/Delete

### ⑭ Video Playback



### ⑭ Video Delete



- If you click the video file, it will start playing.
- It plays in full screen.
- Swipe left the file to delete it, a file deletion message will pop up.
- If you click "delete", it will be deleted.

## ⑮ Video Share

### ⑮ Video Share



- If you keep pressing a video file for 2 seconds, file share APPs will pop up. You can share video files through e-mail, web messenger, etc.

## ⑯ File Saving Guide

### ⑯ Open TAT file

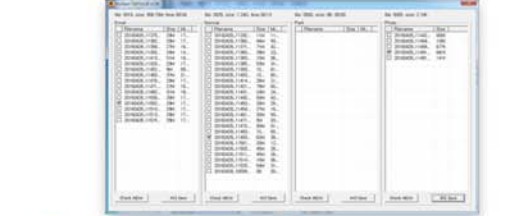
This DVR saves files by TAT function which do not require SD card format. Files saved by TAT are not shown in public player, but shown in only bundled PC viewer or browser. Refer to below TAT browser manual.

### ⑯ How to change and save TAT file in PC

- 1 Execute AVI file converter.exe stored in bundled SD card

Name	Date	Type	Size
AVI File Converter.exe	2016-03-25	exe Program	166KB
ESVAVMuser.dll	2016-03-24	dll Program	28KB
TATLib.dll	2016-03-24	dll Program	316KB
VipLib.dll	2016-03-24	dll Program	316KB

- 2 Double click the file, Or after selecting a file click AVI button in bottom then the file will be converted to AVI file.



- 3 File converting
- 4 File convert completed

- 5 You can play AVI files in public PC video player.