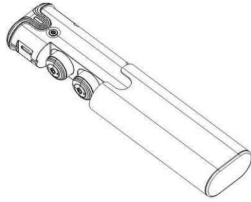


A2

TWS BLUETOOTH EARBUDS

User Manual



Summary

Thank you for choosing super mini True Wireless Stereo Bluetooth Earphone. Fashionable appearance design, powerful functions and high compatibility. It makes you have the wonderful experience of using wireless which is your best choice in driving, indoor and outdoor. This model is combined by "intelligent headset" and "intelligent Power-bank", it's the best choice for mobile phone. Not only a car Bluetooth headset, but also an emergency power-bank. Super mini design, you don't need wear the headset all the time, and can keep full battery state.

Products Features:

1. Wireless stereo Bluetooth earbuds, supports pairing of two wireless earbuds.
2. 2 in 1 Bluetooth earbuds with power bank, long standby time.
3. Aluminum alloy appearance, special handing touch feeling and variety of color.
4. CVC noise reduction, HD sound & call.
5. Built in 700mAh power bank.
6. V4.2 chip, low power consumption, super compatibility.
7. Stunning LED lights, can display different working conditions
8. Hands-free function.
9. Professional over-current protection, short circuit protection function, no damage to equipment.

Products Specification:

Bluetooth Version: V4.2.
 Bluetooth Profiles: HSP, HFP, A2DP and AVRCP profiles.
 Bluetooth transmission range: 10 m
 Power bank battery: 700 mAh
 Earbuds battery: 50 mAh
 Earbuds total standby time: 1000 hours
 Earbuds charge time: 1 hour
 Earbuds non-stop talking Time: 4 hours
 Earbuds total talking time: 100 hours
 Power bank input voltage: DC 5 V
 Power bank output voltage: DC 5 V
 Transmission frequency: 2400 – 2483.5 MHZ

Component:

- | | |
|-------------------------|------------------------|
| 1. Home-Key | 6. Earbuds |
| 2. LED indicator light | 7. Input of power bank |
| 3. Power indicator | 8. Microphone |
| 4. Output of power bank | |
| 5. Power Key | |

User Manual

Power on: Take out earbuds from charging bin, short click the button once to start up.

Power off: Put earbuds into the charging bin, or long click

button to the red light, would turn off automatically.
 Connect: Blue lights flash each 4 seconds once.
 Coming calls: Blue lights flash quickly.
 Talking: Blue lights flash each 4 seconds once.
 Music: Blue lights flash each 4 seconds once.
 Disconnect: Blue lights quickly flash each 4 seconds twice.
 Answer the phone: Click the answer key once.
 Note: Answer the call, (when the phone connect earbuds), only single earbud has voice.

Reject Calls: Click home key about one second to reject when call coming.
 Recalling the last call: Click button twice to redial the last call.

Re-connection: Auto reconnect the paired phone when turned on. (If the phone Bluetooth doesn't delete the paired record with this device and when Bluetooth is Turned on).

Bluetooth pairing (single earbud connection)

1. Take out one of earbuds from the charging bin. Then long click the key until the red and blue lights flash alternately.
2. Turn on your phone Bluetooth device to search "A2" and connect. When the phone connected successfully, the blue light will flash and will hear "the phone is connected"

Bluetooth pairing (double earbuds connection)

1. Take out the two earbuds from the charging bin, short click till the blue light slow flashing, and after few seconds, the red & blue light of one earbud will flash alternately. The machine is on the search state. Then you can open Bluetooth of your cell phone or other devices to connect.
2. Open your phone or others devices, mobile phone to search "A2" and pair. When the phone connected successfully, the earbuds will flash blue light and will hear "the phone is connected".

1. The earbuds turn off when battery is low. After it is recharged, it will automatically connect back to the last paired Bluetooth device.
2. If you can't search A2, please operate below 1-2 steps to reconnect,
 (Note:

1. The earbuds were already paired at the factory when you get the earbuds, click the button to blue light slow flash, then could be used.
2. If you need to repair the earphone by yourself, long click both of earbuds button till the red & blue light flash alternately. After the earbuds paired successfully, the blue light will slow flash. After few seconds, one of the earbuds flash red & blue light alternately to connect the phone. (If the pairing isn't successful, please put the earbuds back to charging bin to reset operation and then operate again).
3. In TWS mode, when one of earbuds batter low, both of them will automatically turn off. Or the Bluetooth device stop connection within 5 minutes, the earbuds will turn off automatically).

Note:

If one of the earbuds doesn't work, please turn off the Bluetooth device of the phone, put back earbuds into the charging bin firstly, then take two earbuds out of the charger and keep them turn on, then press once for each earbuds. after that it will flash red & blue lights 1 to 10 seconds, two earbuds pair with the phone successfully, and then the blue light flashes only. Repeat step 1 and step 2 to reconnect with phone.

Warning:

Use approved charger as possible, using other types of charger may violate the equipment's approval or warranty, and may draw to dangerous. Only charging cable with 3C certification could be put into boxes as accessory when earbuds be delivered from factory.

Chinese & English switching voice prompt

When the earbuds were turned off, long press home key to the red & blue lights flash. And then double-click home key

to Chinese / English voice prompt switch.

Earbuds charging

1. When charging earbuds, the red light would flash, and red light would turn off when the power is full enough (the charging time is 0.5 hour or around).
2. When connected earbuds flash red light, it indicates that the earbuds low battery. It will automatically turn off if keep to work, and now you need to charge them - put the earbuds into the charging bin.
3. The earbuds uses magnetic absorption intelligent charging, the earbuds would be automatically charged when put them into the charging bin. (if no red light, please reset)
4. Fully charged earbuds could support 3 - 4 hours of talking time, 100 - 150 hours of standby time. However, the actual talking time and standby time maybe different with the different mobile connected, as well as the different settings, usage and environment.

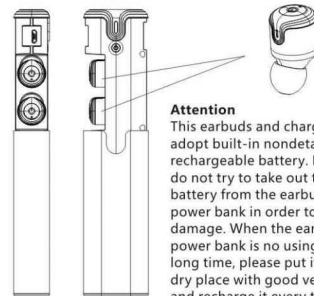
Charging of charging bin

1. The standard data line is inserted into the charging bin, and other side of the line connect qualified charger to charge the charging bin.
2. When the charging bin is charging, the red light would flash.
3. When the charging bin is full of electricity, the red light would keep flashing. Charging bin's charging time is 1hour. The blue light would flash when unplug the charging line.
4. When full of electricity, the charging bin provides about 100 hours talking time, 1000 hours standby time. However, the actual talking time and standby time maybe different with the different mobile connected, as well as the different settings, usage and environment.
5. Press once the switch button of the charging bin to turn on, the blue light flashes, and press twice to turn off, the blue light over. When put the earbuds on charging bin, they would be charged automatically. At this Time, the powerbank indicator light is keeping blue, the earbuds indicator light is keeping red. The charging bin would turn off after 32 seconds after the earbuds were charged full.

Package includes:

- 1 Two Bluetooth earbuds
- 2 Portable Charging Case
- 3 USB Charging Cable
- 4 Earmaff: Small, Large

Charging earbuds with charging bin diagram



Attention

This earbuds and charging bin adopt built-in nondetachable rechargeable battery. Please do not try to take out the battery from the earbuds or power bank in order to avoid damage. When the earbuds or power bank is no using for a long time, please put it into a dry place with good ventilation, and recharge it every three months.

Regular problems and solutions

Problems description	Cause	Solution
Can't turn on	The power used up	Charge the battery fully before use
	Press home button too short	Press the home key for 3 seconds to re-start the earbuds
Can't charge	Plug is not placed well	Check the plug well
Can't find the earbuds when searching pairing devices	Not enter pairing state	Till the red/blue light flash alternately
	The eabuds are not in searching status	Set the earbuds on searching status
Poor call quality	Mobile phone Bluetooth software error	Close the mobile phone and re-start
	Low power of earbuds	Charge the earbuds
	Bluetooth signal interference	Don't use in noisy or electromagnetic

After sales service

Our company provides the guaranty in accordance with stated regulations strictly:
 The warranty period is one year.
 Our products do not provide unsalable goods refund, replacement services.



FCC Statement

This equipment has been tested and found to comply with the limits for a Class B digital device, pursuant to Part 15 of the FCC Rules. These limits are designed to provide reasonable protection against harmful interference in a residential installation. This equipment generates uses and can radiate radio frequency energy and, if not installed and used in accordance with the instructions, may cause harmful interference to radio communications. However, there is no guarantee that interference will not occur in a particular installation. If this equipment does cause harmful interference to radio or television reception, which can be determined by turning the equipment off and on, the user is encouraged to try to correct the interference by one or more of the following measures:

- Reorient or relocate the receiving antenna.
- Increase the separation between the equipment and receiver.
- Connect the equipment into an outlet on a circuit different from that to which the receiver is connected.
- Consult the dealer or an experienced radio/TV technician for help.

This device complies with part 15 of the FCC Rules. Operation is subject to the following two conditions: (1) This device may not cause harmful interference, and (2) this device must accept any interference received, including interference that may cause undesired operation.

Changes or modifications not expressly approved by the party responsible for compliance could void the user's authority to operate the equipment.