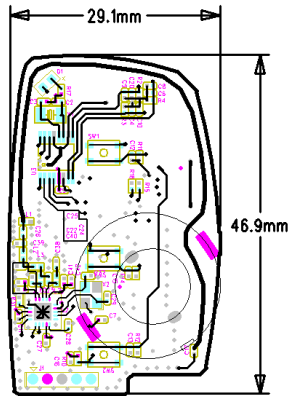


433MHz Pattern Antenna

1) Electrical Specifications



Antenna Pattern : Width-0.6mm / Length-81mm

2) Electrical Specifications

Center Frequency: 433MHz

Recom. Freq. Range: 418–458MHz

Wavelength: $\frac{1}{4}$ -wave

VSWR: ≤ 2.0 typical at center

Peak Gain: 1dBi

Impedance: 50-ohms

Connection: Surface-mount

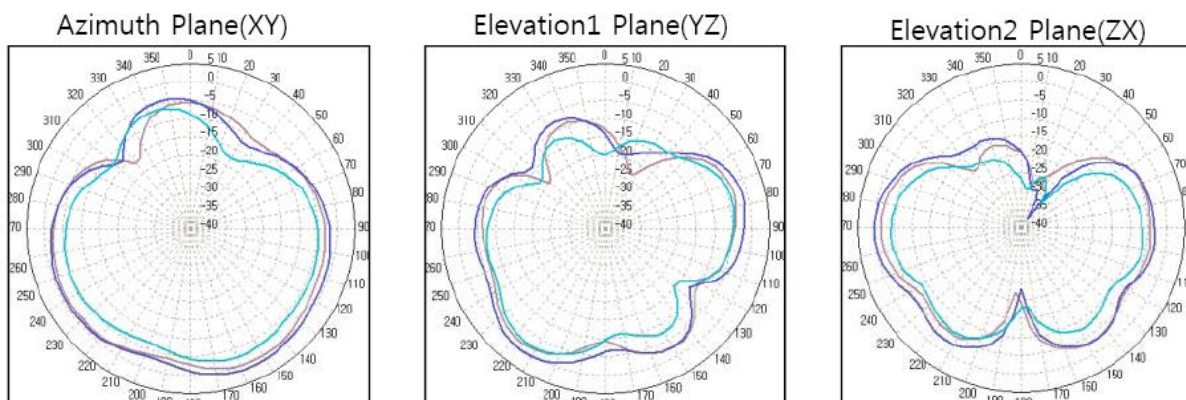
Oper. Temp. Range: -40°C to $+80^{\circ}\text{C}$

Electrical specifications and plots measured on a 4.60 cm x 15.00 cm reference ground plane

3) VSWR Graph



4. Gain on Evaluation Board



Frequency (MHz)	Azimuth Plane(XY)	Elevation1 Plane(YZ)	Elevation2 Plane(ZX)
	Peak Gain	Peak Gain	Peak Gain
433.92	1.2	0.8	0.3