

Topigeon Pigeon Landing Antenna

Introduction

The Topigeon timer combined with the high performance landing board is the most powerful and complete ETS system for clubs and fanciers. The Topigeon landing boards have 3 different sizes for fanciers to select. To reach the highest security level and maximum reading speed, all the boards are designed with anti-collision and anti-interference mechanism. The single channel board is even with UID reading function as an option.

The Advantages:

With anti-collision and anti-interference mechanism design, high reading distance with maximum clocking speed

Single channel board with UID reading mechanism (option)

Flat and water resistant

5m (15 feet) connecting cable is included.

The cable is modularized design and easy to be repaired

Available in three sizes: 76x30cm, 47x30cm and 17x30cm

Working Temperature: : -10 ~ 60°C

Dimensions

540mm x 186mm x 35mm

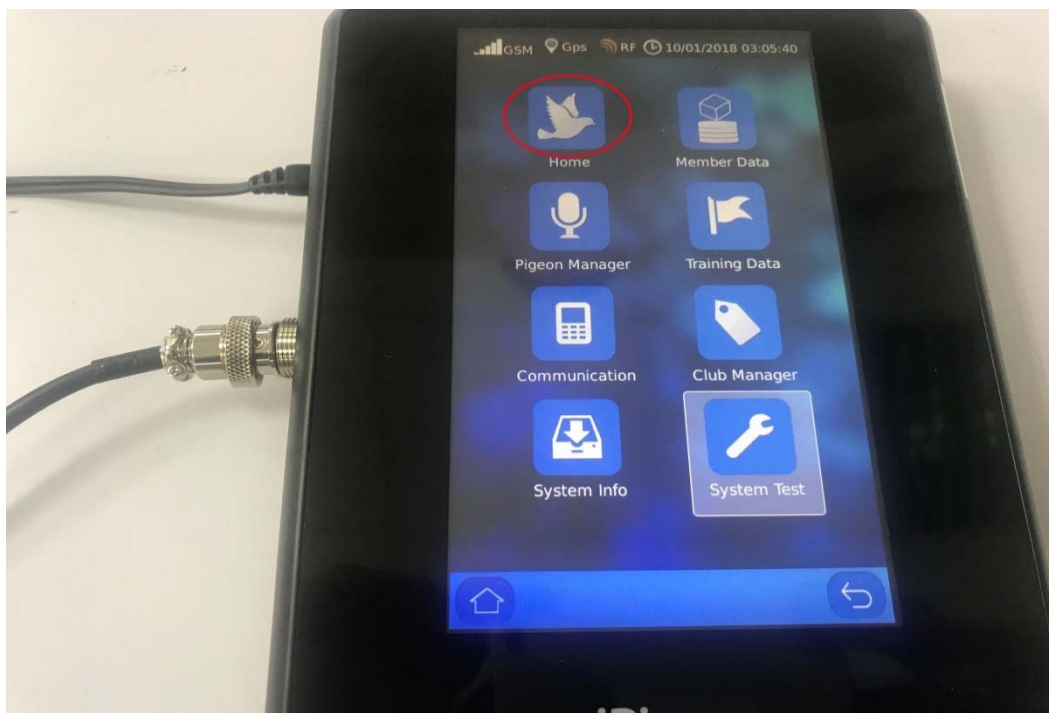


Four channel landing antenna operation instructions:

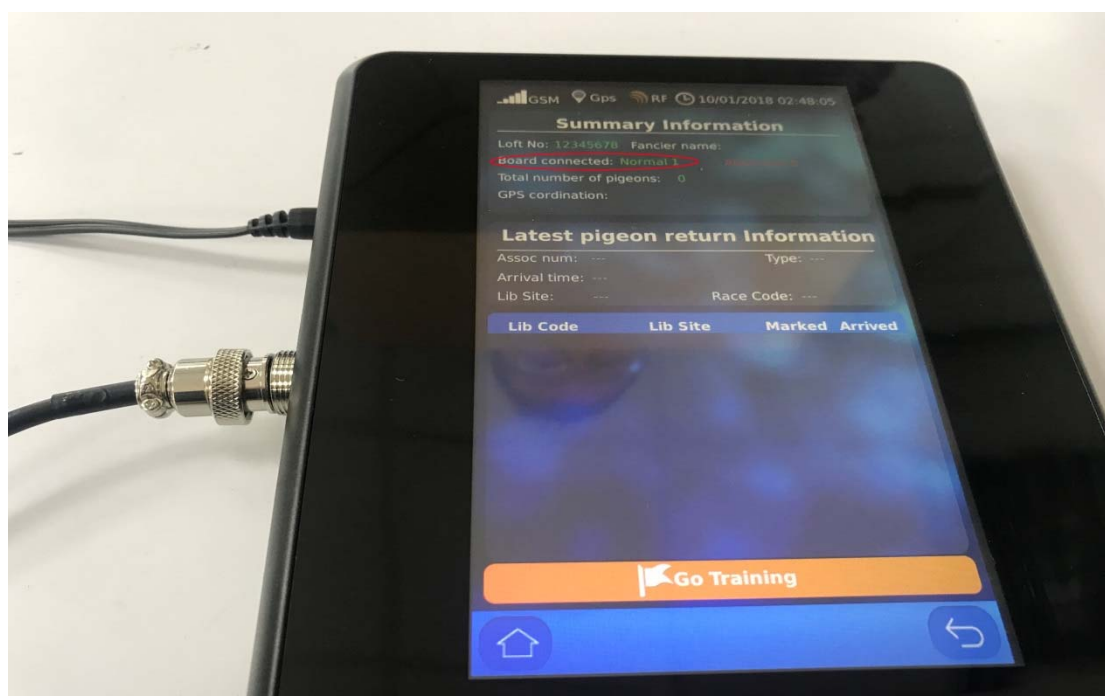
The needs to be paired with an electronic pigeon clock supply it with a power. If use an electronic chip ring to sense the landing pad it will have beep sound and number display , as shown in the following picture



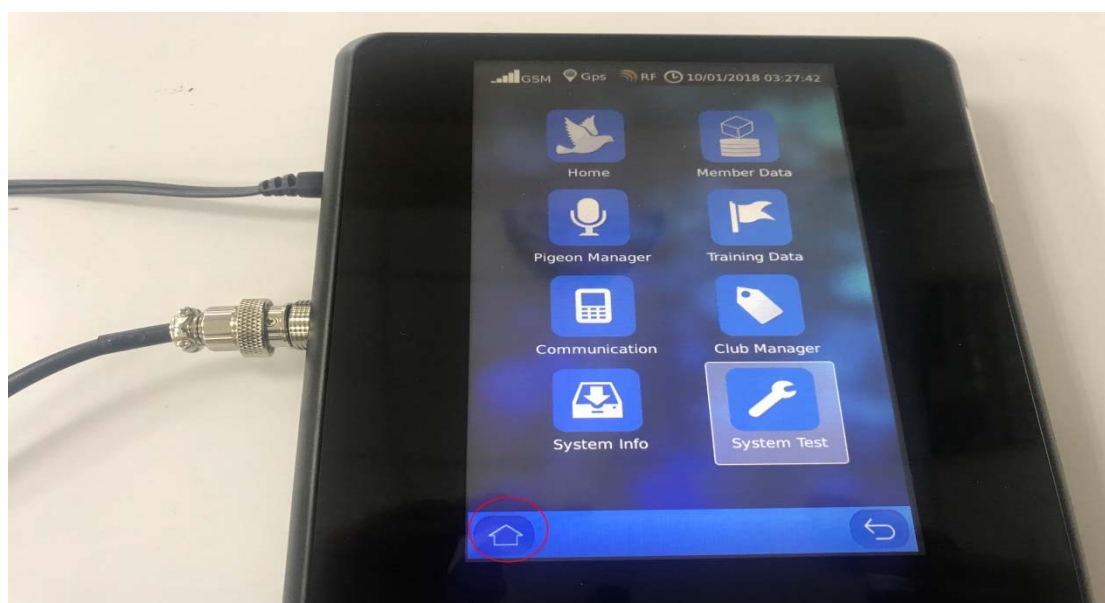
Electronic pigeon clock connect 12v Power , to connect the four channel board to the Electronic pigeon clock



The electronic pigeon clock boots into the main screen, then press "Home" Key, the screen will show the connection in red circles .



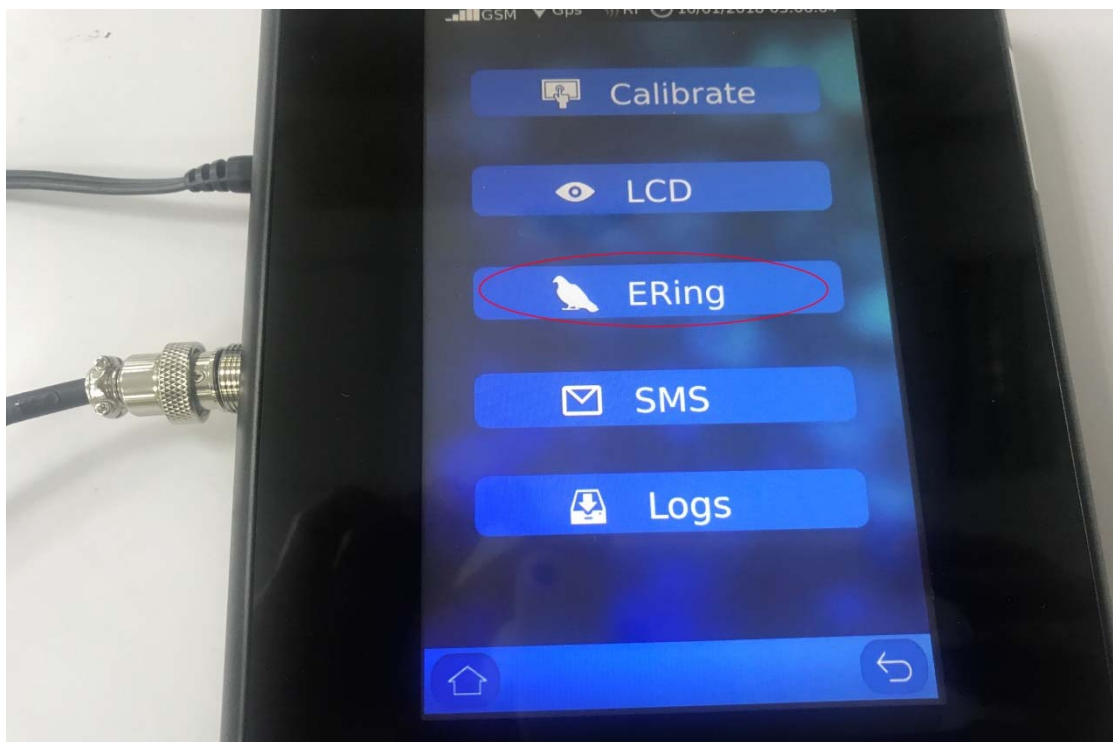
The screen appears with Board Connected: Normal 1, indicates that the four Channel Board has been registered with the Electronic pigeon clock .
If the board is not registered, appears with Normal 0



and then, press main screen Key, please see red circles, for returns to the main screen.



Press System Test key shown in red circle.



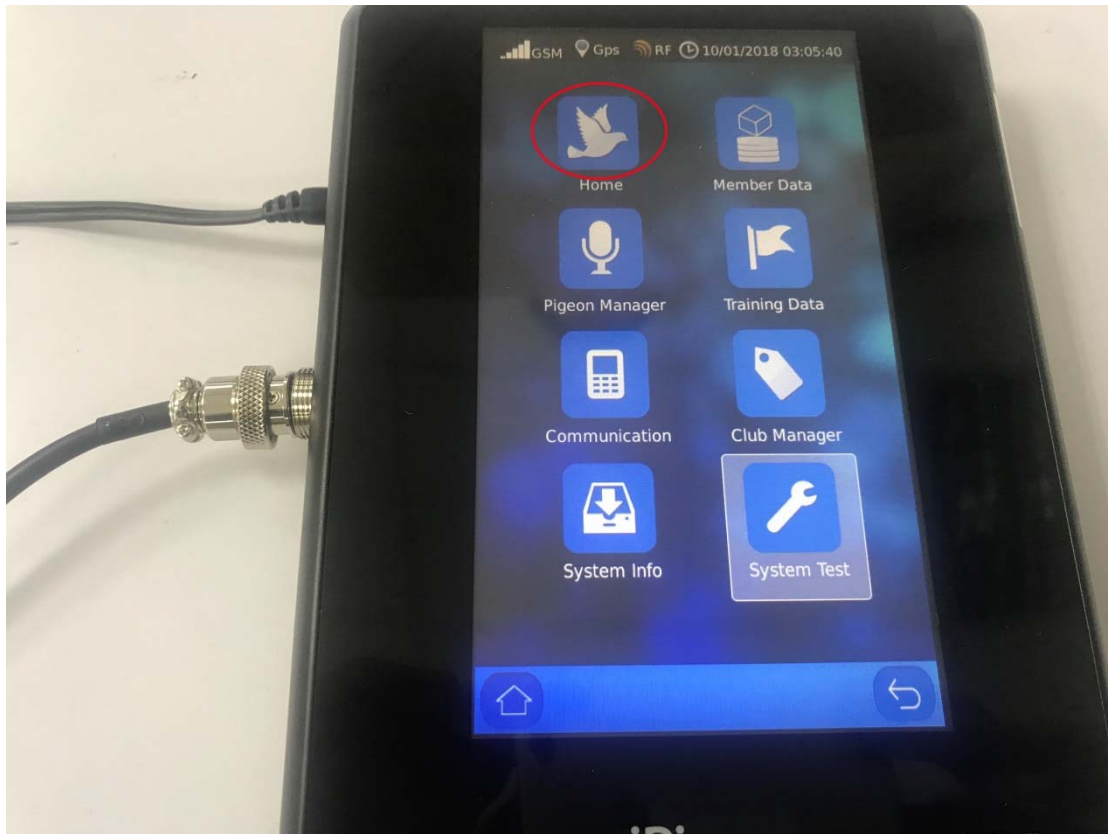
Press E Ring key shown in Red circle °



Place the electronic chip ring on the four-channel board (maximum above 5 cm) , each cell can be sensed



Electronic Pigeon clocks will beep, and electronic pigeon clocks display the number (E-ring number) of chip rings. Please see the picture shown below ,



Notice :

The changes or modifications not expressly approved by the party responsible for compliance could void the user's authority to operate the equipment.

IMPORTANT NOTE: To comply with the FCC RF exposure compliance requirements, no change to the antenna or the device is permitted. Any change to the antenna or the device could result in the device exceeding the RF exposure requirements and void user's authority to operate the device.

FCC INFORMATION

The Federal Communication Commission Radio Frequency Interference Statement includes the following paragraph:

The equipment has been tested and found to comply with the limits for a Class B Digital Device, pursuant to part 15 of the FCC Rules. These limits are designed to provide reasonable protection against harmful interference in a residential installation. This equipment generates, uses and can radiate radio frequency energy and, if not installed and used in accordance with the instruction, may cause harmful interference to radio communication. However, there is no grantee that interference will not occur in a particular installation. If this equipment does cause harmful interference to radio or television reception, which can be determined by turning the equipment off and on, the user is encouraged to try to correct the interference by one or more of the following measures:

- Reorient or relocate the receiving antenna.
- Increase the separation between the equipment and receiver.
- Connect the equipment into an outlet on a circuit different from that to which the receiver is connected.
- Consult the dealer or an experienced radio/TV technician for help.