

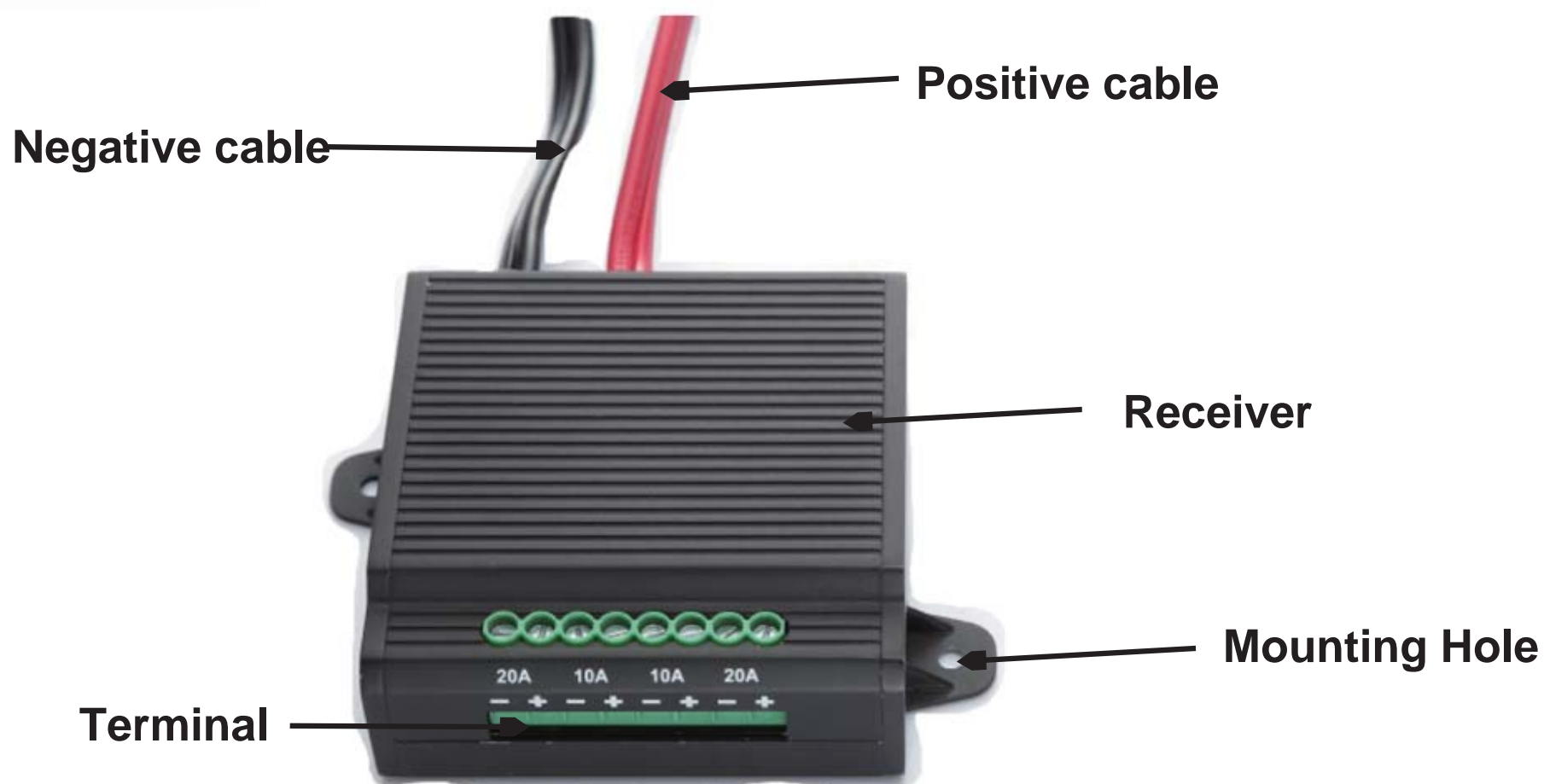
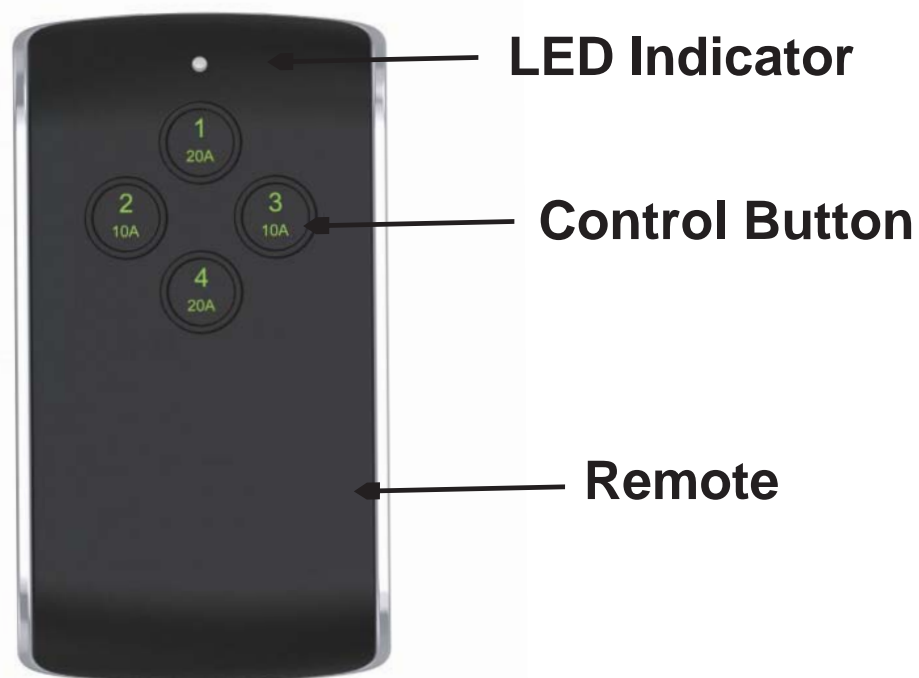


1292702

4 WAY WIRELESS REMOTE CONTROL SYSTEM



User Manual





1292702

INTENDED USE

This product is a remote controlled, wire management system. The remote control and receiver are designed to be used for operating accessories (including lights, horns, warning beacons, etc.) that are typically used on work or off-road vehicles (trucks, jeeps, ATV/UTV, boats, heavy equipment, farm equipment, etc.). The unit works on 12V DC and provides output to bank of 4 terminals .

Depending upon intended use, the system may require a higher capacity alternator and/or a larger battery. Consult with a local installer or up-fitter for guidance.

Please note that the remote control can be clipped onto a visor, or stored conveniently within the vehicle for easy access. It uses a 12V, 23A size alkaline battery that is supplied with the kit.

TECHNICAL SPECIFICATIONS

Standard design	12V,max 60A
Rated input voltage	DC 13V
Working voltage	DC 11-15V
Input low voltage protection	9.5 +/- 0.3V DC
Max output current	60A per terminal bank
Working temperature	-15°C ~ 80°C
Fuse	30AX2
Remote control battery	12V 23A alkaline
Low-voltage protection circuit	9.8V +/- 0.3V DC
Thermal shut off temperature	120°C



1292702

TECHNICAL SPECIFICATIONS

- Designed to work in a wide range of temperatures: $-15^{\circ}\text{C} \sim 80^{\circ}\text{C}$.
- Remote has a range of up to 50 ft.
- Each channel is independent of other channels and will not interfere with them. .
- Reverse polarity protection to protect the unit in an event the terminals are installed incorrectly.
- Low-voltage protection circuit to protect battery from being completely drained.
- Unit will shut down when the battery voltage drops to $9.8 \pm 0.3\text{V DC}$.
- Each terminal is protected for current overload.
- Thermal protection. The unit will automatically shut down when the unit temperature reaches 110°C It will automatically recover when temperature drops below 80°C .
- If there is no activity for 48 hours, the unit will enter sleep mode.
- External fuse holders for easy access.
- Rolling code technology prevents duplication and interruption by other remote devices.
- In case the remote is lost, a replacement remote can be paired with the existing module, rather than an entire unit.



1292702

INSTALL THE REMOTE

Please read these instructions carefully before installing this product or consult a professional installer to prevent damage to vehicle and/or system.

Do not connect to 24V DC or higher voltage system, as this product is designed for a 12V DC battery system. If you have a larger than 12V DC system, check vehicle owner's manual to determine if a 12V DC output is available and how to connect in order to use it safely, otherwise, the product will be damaged.

Step 1: Find a suitable flat surface near the battery, clean the surface free of dirt and oil and then affix the unit using provided velcro strips.

Step 2: Disconnect the vehicle battery before starting to install the unit. Detach the negative (black) cable from the battery terminal and lay it aside. Now securely attach the positive (red) cable of the receiver to the positive terminal of the battery and negative (black) cable of the receiver to the negative battery cable or vehicle chassis.

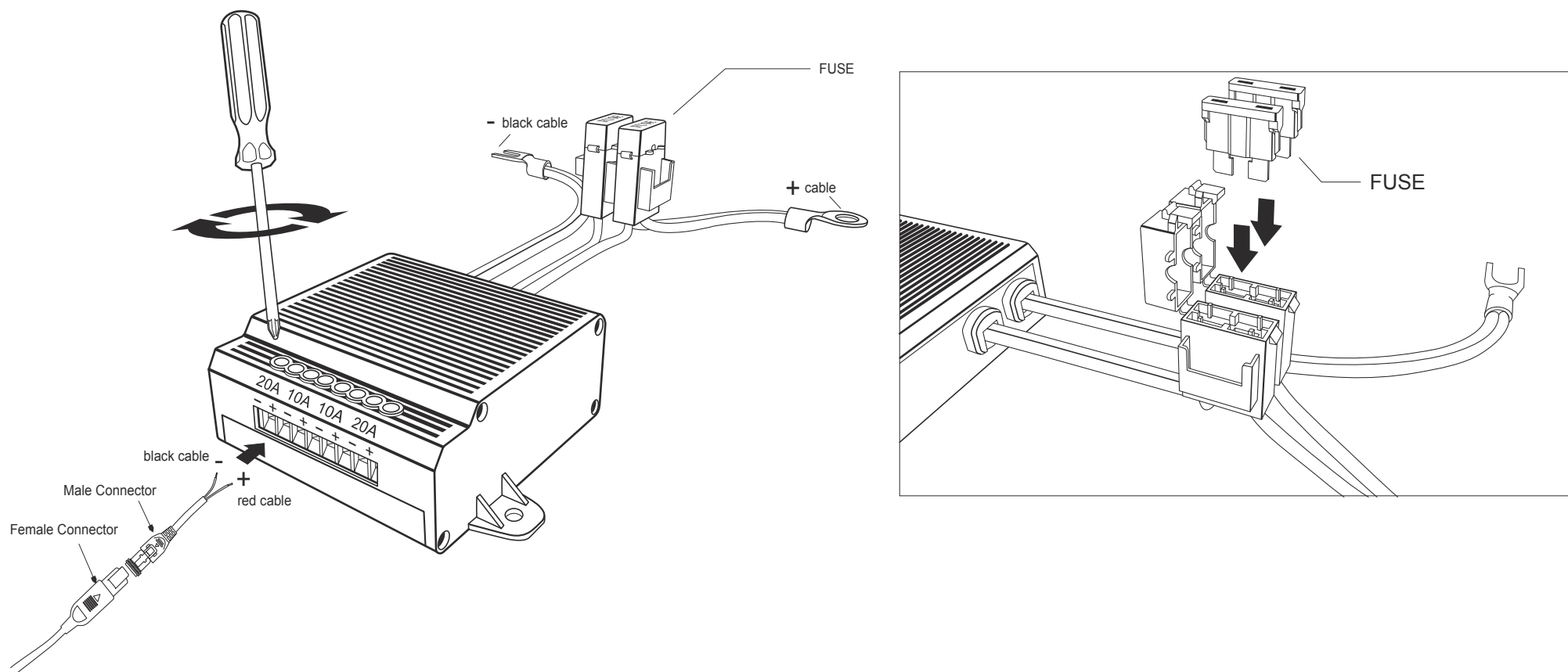
Step 3: Attach the auxiliary lights/equipment to appropriate terminals and polarities.

Step 4: Connect the negative cable to the negative terminal of the battery.

Step 5: Insert the two fuses back in their holders and close the covers.

Step 6: Install the battery before using the remote (battery is a 12V A23 Alkaline battery).

Step 7: Recycle used battery.



PAIRING PROCEDURE

- Point the remote control to the main unit and using a small screwdriver press the black switch. The green light will light up.
- Now press any one of the four buttons on the remote to pair and the green light should turn off indicating successful pairing.



1292702

FCC Statement

This equipment has been tested and found to comply with the limits for a Class B digital device, pursuant to Part 15 of the FCC Rules. These limits are designed to provide reasonable protection against harmful interference in a residential installation. This equipment generates uses and can radiate radio frequency energy and, if not installed and used in accordance with the instructions, may cause harmful interference to radio communications. However, there is no guarantee that interference will not occur in a particular installation. If this equipment does cause harmful interference to radio or television reception, which can be determined by turning the equipment off and on, the user is encouraged to try to correct the interference by one or more of the following measures:

- Reorient or relocate the receiving antenna.
- Increase the separation between the equipment and receiver.
- Connect the equipment into an outlet on a circuit different from that to which the receiver is connected.
- Consult the dealer or an experienced radio/TV technician for help.



1292702

FCC Statement

This device complies with part 15 of the FCC Rules. Operation is subject to the following two conditions:

(1) This device may not cause harmful interference, and (2) this device must accept any interference received, including interference that may cause undesired operation.

Changes or modifications not expressly approved by the party responsible for compliance could void the user's authority to operate the equipment.

Distributed by:
TRACTOR SUPPLY COMPANY
5401 VIRGINIA WAY
BRENTWOOD, TN 37027
For customer support,
Call: 1-888-376-9601
www.TractorSupply.com
MADE IN CHINA