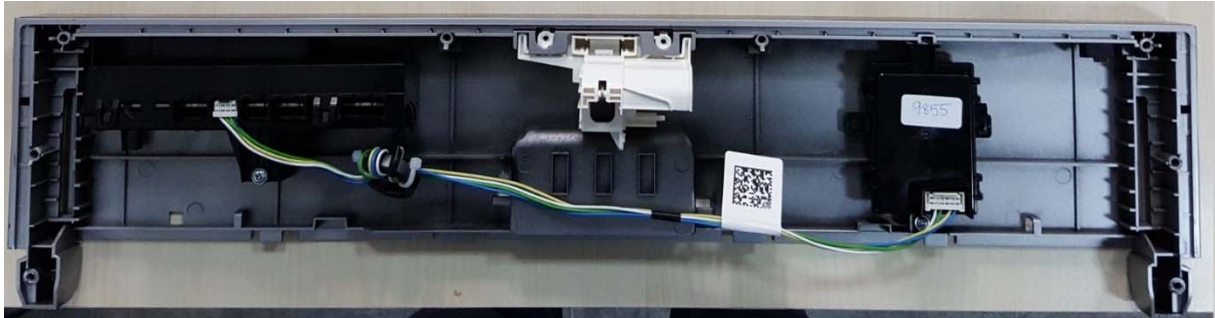
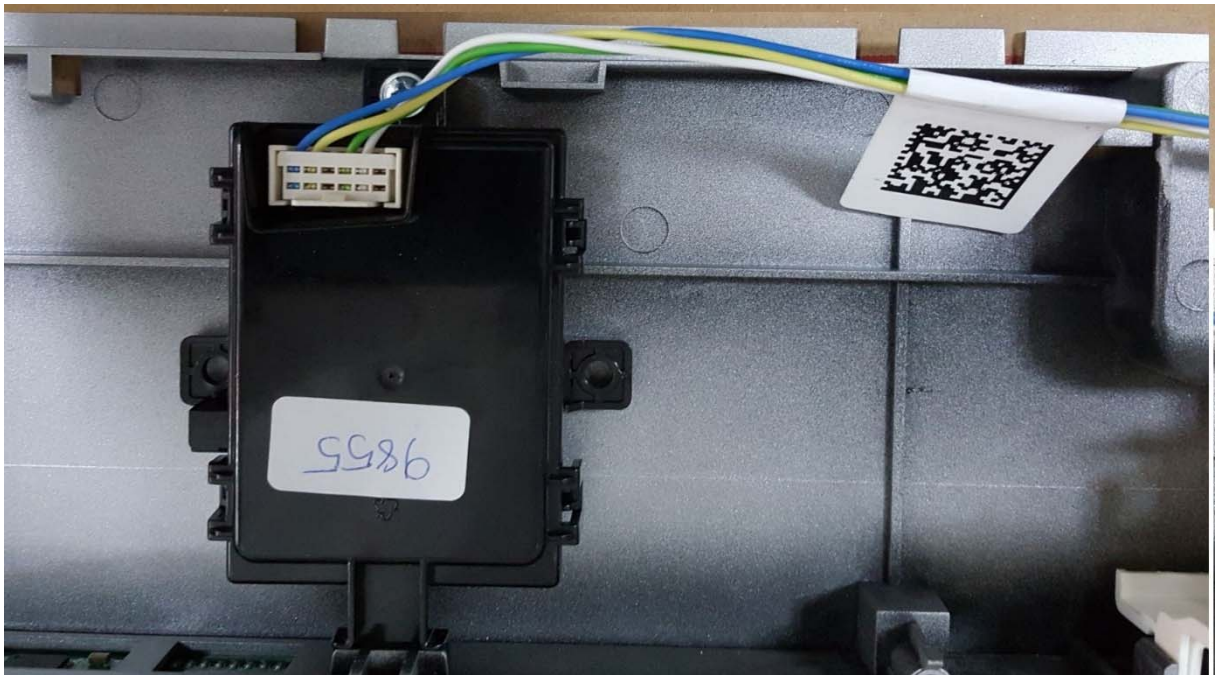


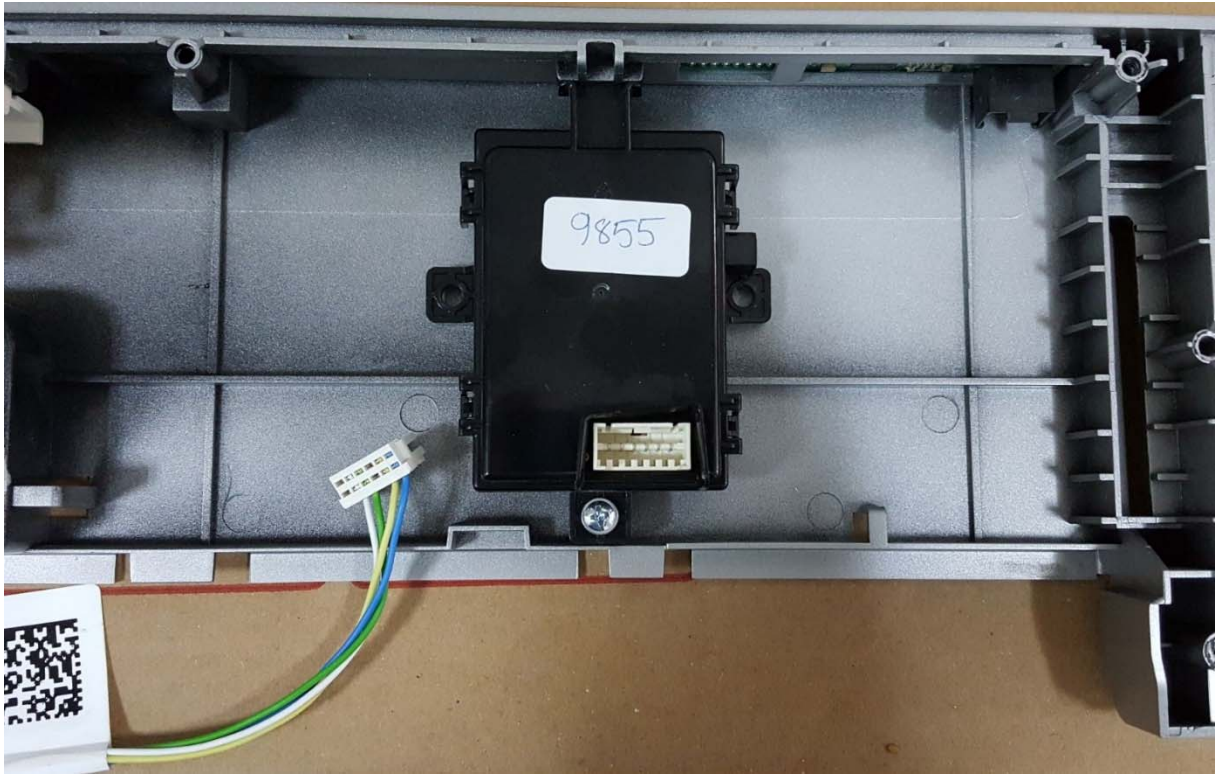
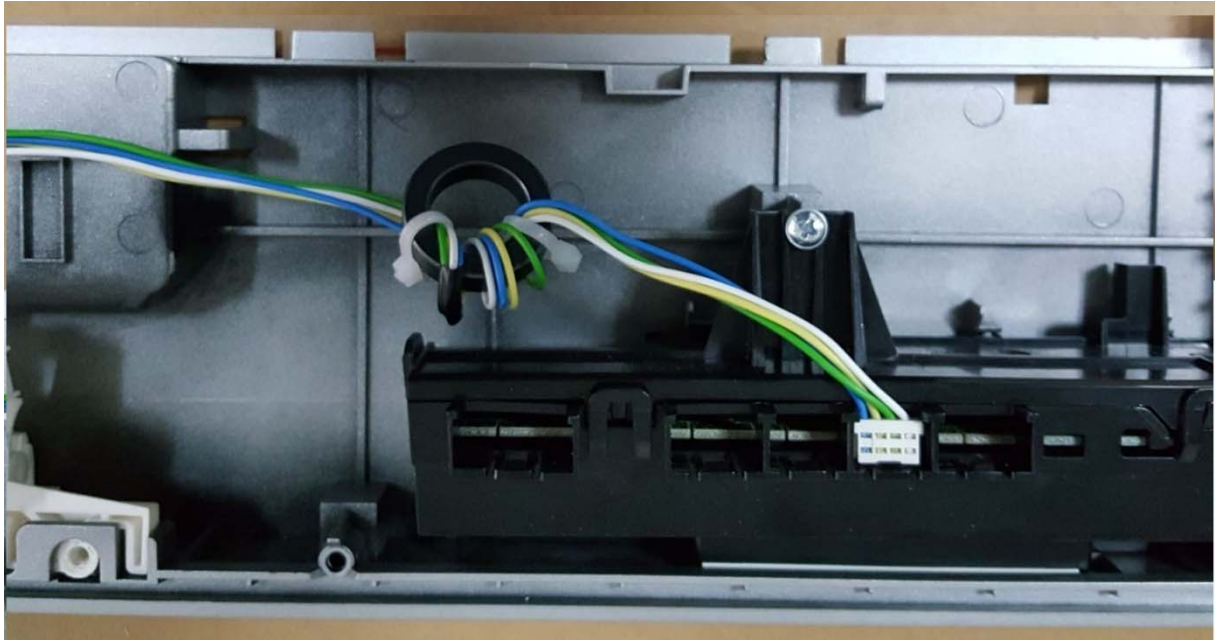
INTERNAL PHOTOS OF THE PRODUCT

The connectivity (WeMod) board is located in the panel. Top view of the panel is the following:



WeMod board is connected to display board via 4-pinned socket.





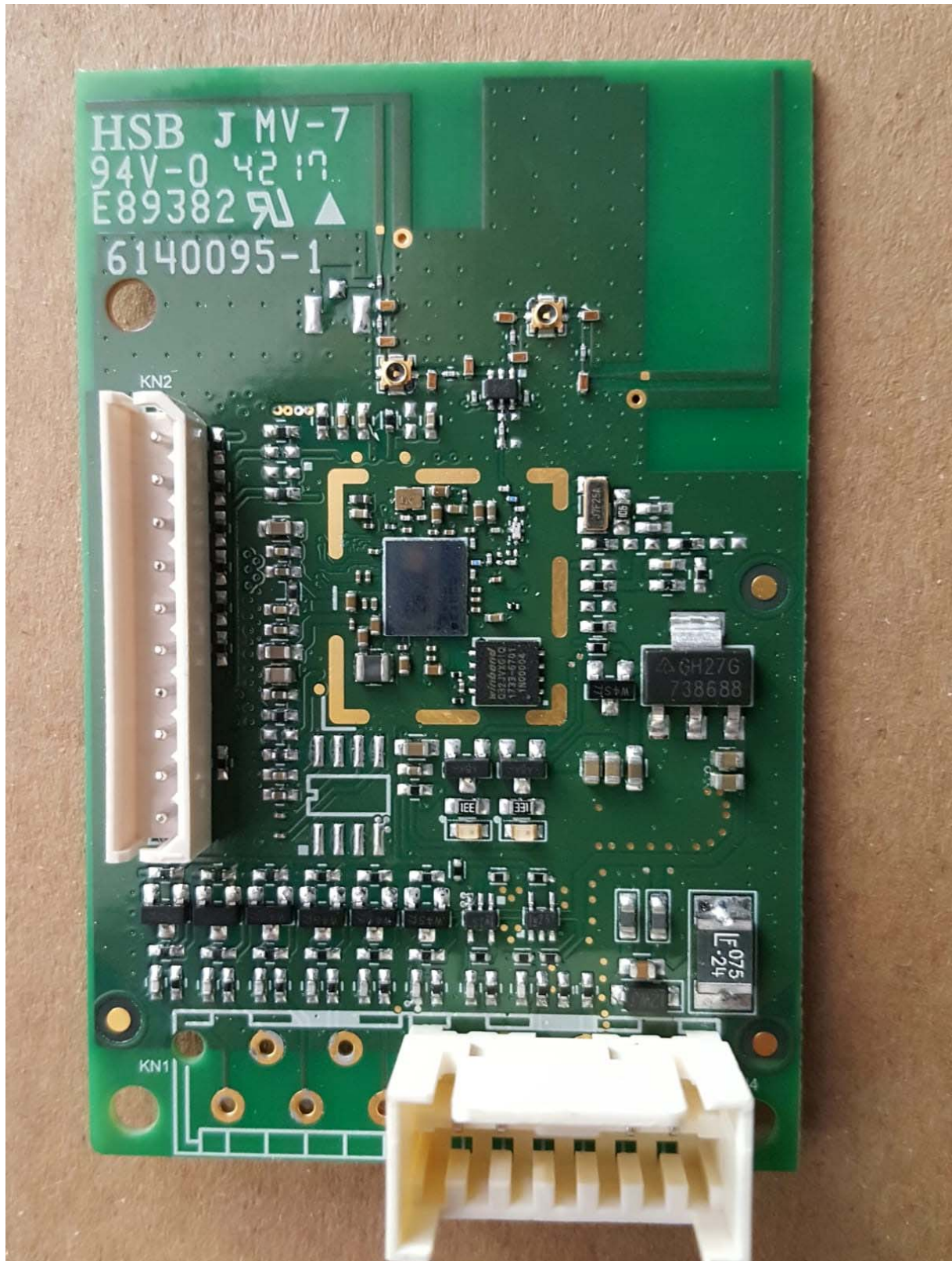


WeMod board with it's plastic holders together



Detailed photo of the WeMod PCB is the following:

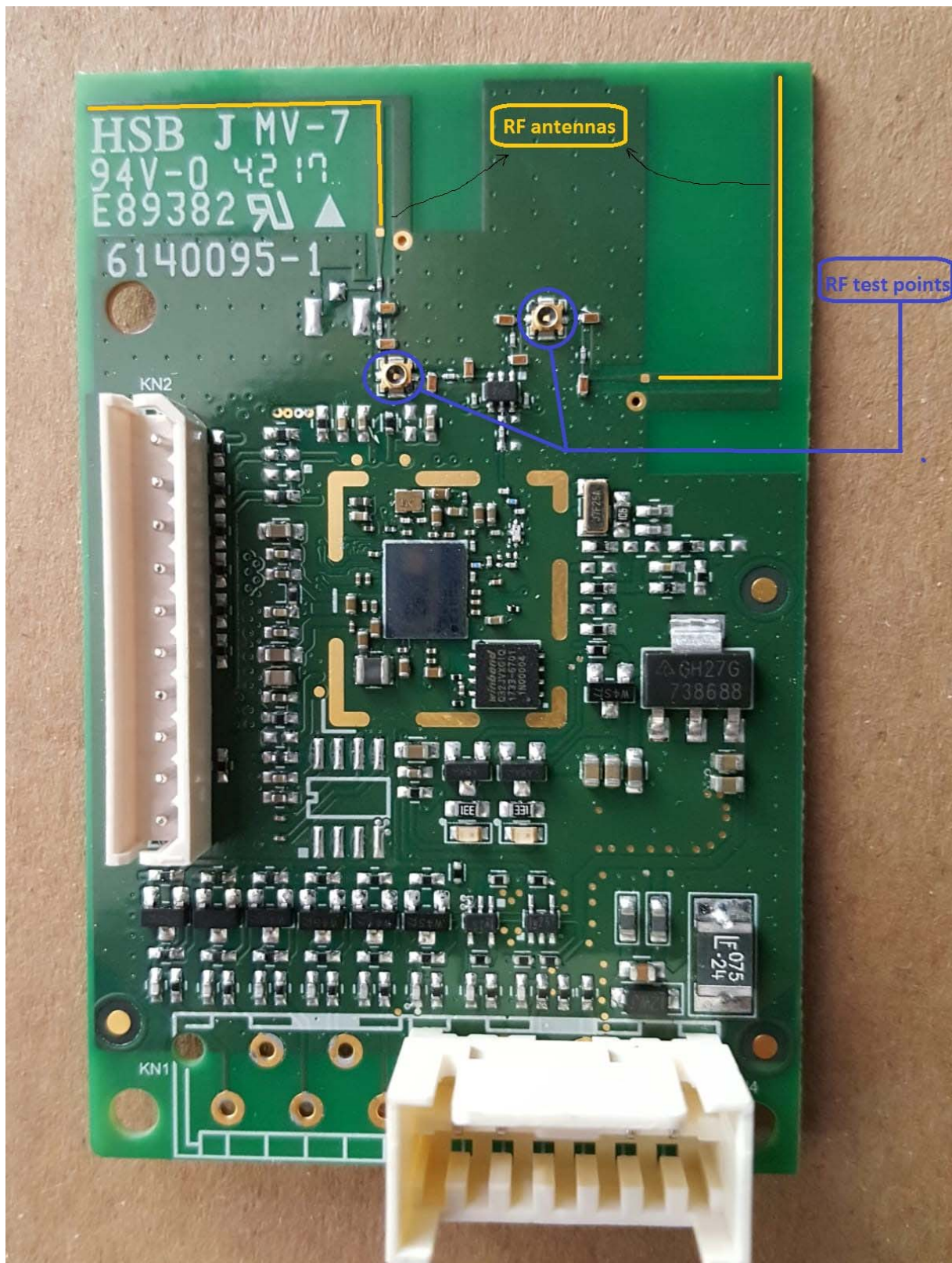
Front View



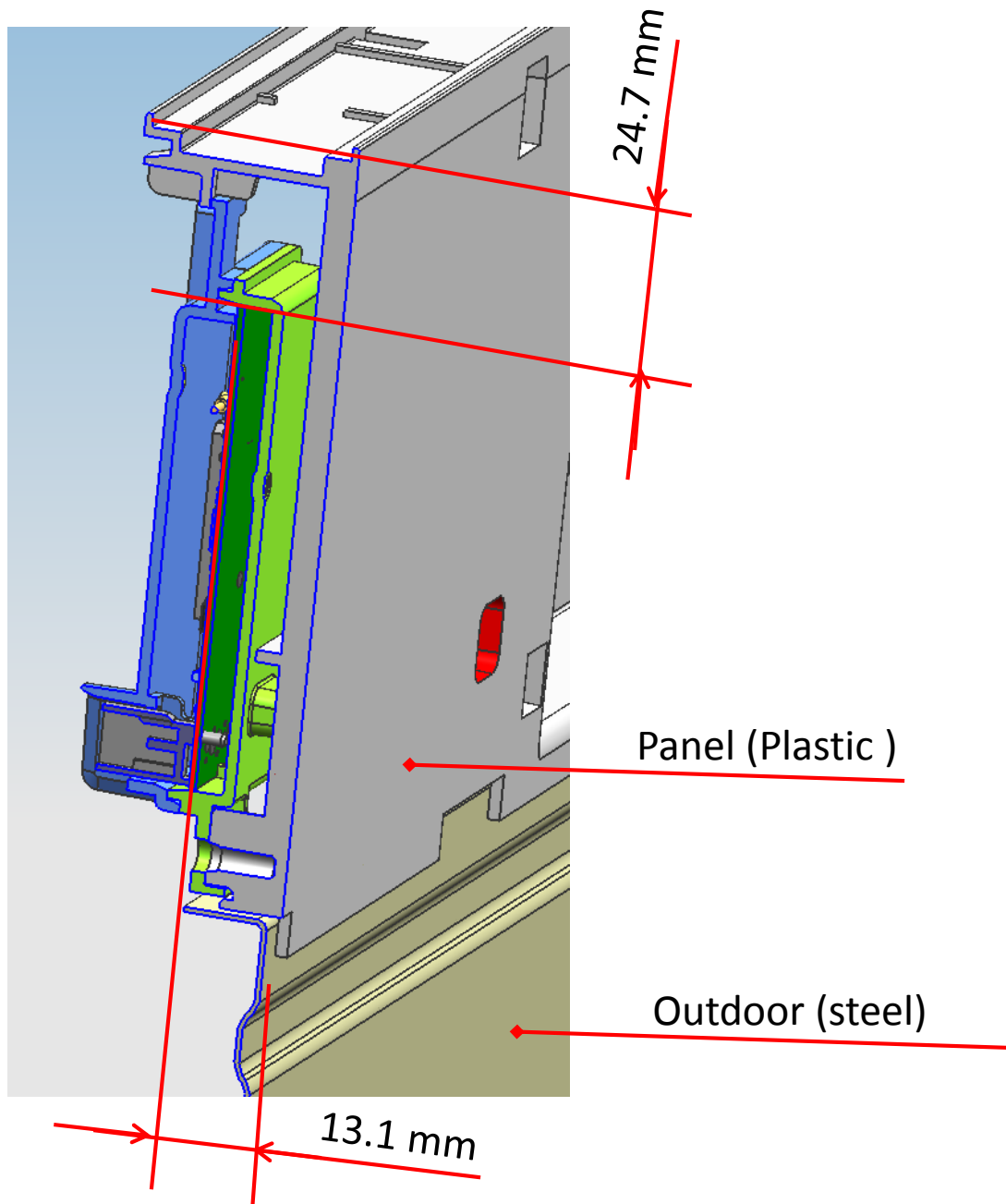
Back View:



You can see RF test point, RF antenna paths as the following:



There will be no shielded version of the WeMod PCB.



FCC ID:
2AO7AARWM01

Distance from the tip of the antenna to the top of the plastic cover = 2.0 mm

Distance from the top of the plastic cover to the top edge = 24.7 mm.

Distance from the tip of the antenna to the top of the door = 26.7 mm ($24.7 + 2.0 = 26.7$ mm)

