



ITEM NO. B1176

8+

NITRO Z21

INSTRUCTION MANUAL

FULL FUNCTION RADIO CONTROL FISHING BOAT

***IMPORTANT:** IF BOAT DOES NOT RESPOND PROPERLY, PLEASE REPLACE BATTERIES IN BOAT (6 AA NOT INCLUDED) AND BATTERY IN CONTROLLER (1 X 9V NOT INCLUDED).

Please thoroughly read the manual before operating product. Keep manual for future reference use.

**** NOTE: THE MANUFACTURER IS NOT RESPONSIBLE FOR ANY RADIO OR TV INTERFERENCE CAUSED BY UNAUTHORIZED MODIFICATIONS TO THIS EQUIPMENT. SUCH MODIFICATIONS COULD VOID THE USER'S AUTHORITY TO OPERATE THE EQUIPMENT.**

WARNING:

Changes or modifications to this unit not expressly approved by the party responsible for compliance could void the user's authority to operate the equipment.

This device complies with Part 15 of the FCC Rules. Operation is subject to the following two conditions:

1. This device may not cause harmful interference, and
2. This device must accept any interference received, including interference that may cause undesired operation.



WARNING:
CHOKING HAZARD-Small parts.
Not for children under 3 years.

DO NOT MIX ALKALINE,
STANDARD (CARBON ZINC)
OR RECHARGEABLE BATTERIES.

DO NOT MIX OLD AND NEW BATTERIES.

REQUIRES 6 AA BATTERIES IN BOAT
(NOT INCLUDED) AND 1 9V BATTERY
IN CONTROLLER (NOT INCLUDED).

COLORS AND DECORATIONS MAY
VARY. KEEP CONTENT DETAILS
FOR FUTURE REFERENCE.



WARNING:
Contains fishing hooks with a very sharp
point and barb that can cause serious
injury. Keep hooks away from children.
Use only under adult supervision.

DO NOT DISPOSE OF BATTERIES
IN FIRE. BATTERIES MAY
EXPLODE OR LEAK.

CONTENT LIST



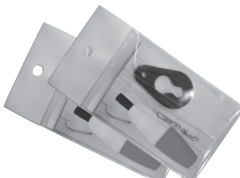
CONTROLLER



FISHING BOAT



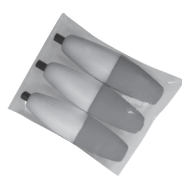
DISPLAY STAND



TACKLE SET (2X)



FISHING STRING & TETHER

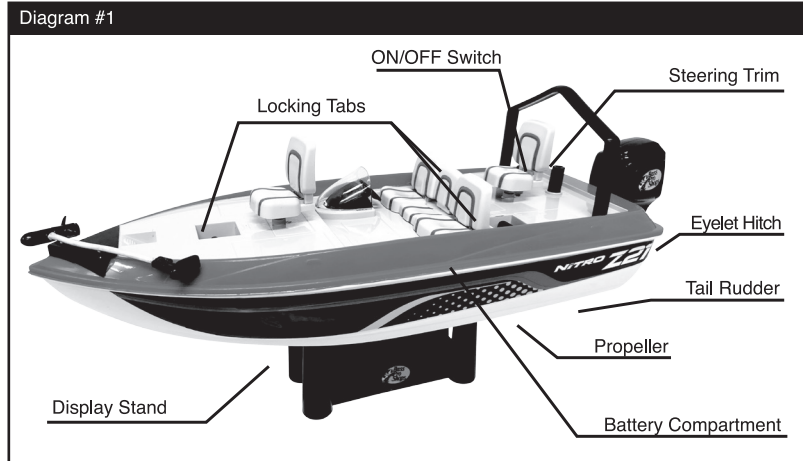


FOAM FLOATERS (3X)



TELESCOPING HOOK

GETTING TO KNOW YOUR BOAT



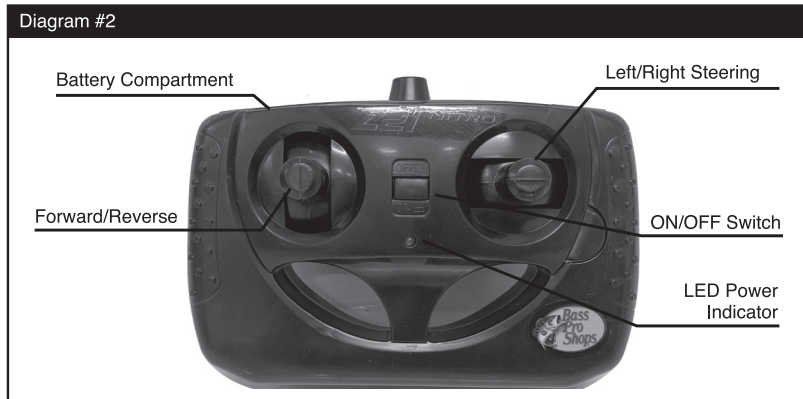
To prevent damage, the contents of the package that are listed have been packed in the tray and may be out of plain sight. Please remove all contents from the tray.



CAUTION:

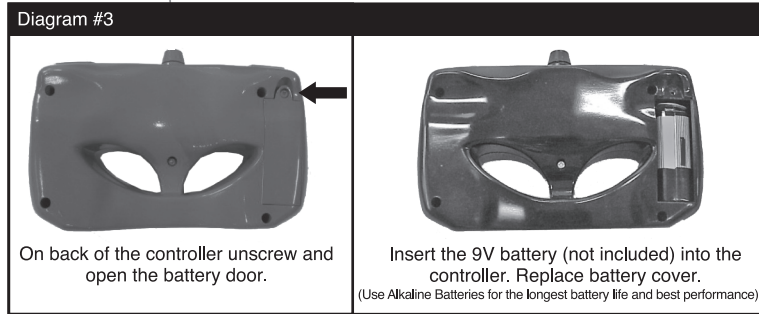
Do not touch the running propeller! Do not play with toy around anyone in water! Do not modify toy in any way. Adult supervision is required!

INFRARED CONTROL TRANSMITTER



1

CONTROLLER BATTERY INSTALLATION

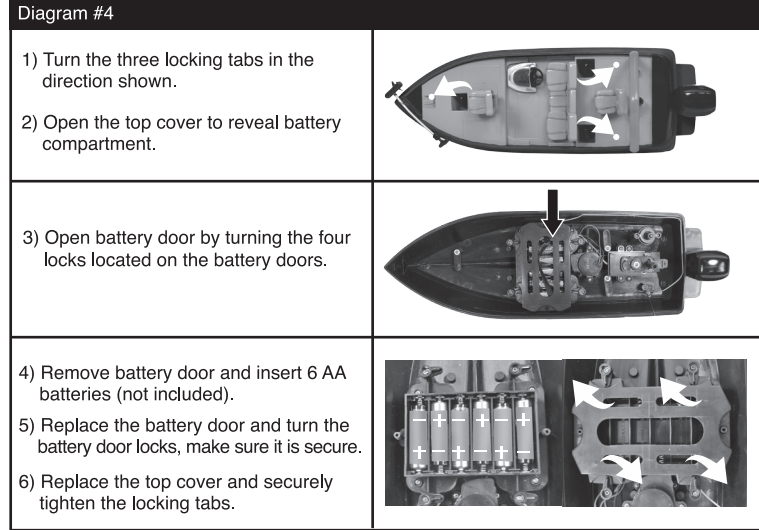


PLEASE NOTE:

A) Make sure the batteries have been inserted correctly (+ or -) into the controller.
B) If the boat does not respond properly, please replace the alkaline batteries in the controller.

Remember to take out all of the batteries from the controller and boat if the vessel will not be used for a long time.

BOAT PREPARATIONS



DO NOT MIX ALKALINE, STANDARD (CARBON ZINC) OR RECHARGEABLE (NICKEL CADMIUM) BATTERIES.

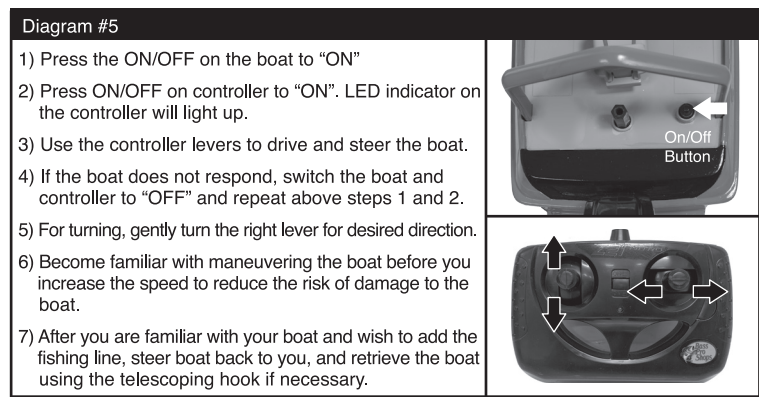
DO NOT MIX OLD AND NEW BATTERIES.

DO NOT DISPOSE OF BATTERIES IN FIRE. BATTERIES MAY EXPLODE OR LEAK.

DANGER!

NEVER INSERT ANY SHARP OBJECTS, PINS OR SCREWS INTO THE BOAT AS THIS MAY PUNCTURE THE VESSEL OR THE BATTERY!

USING YOUR FISHING BOAT

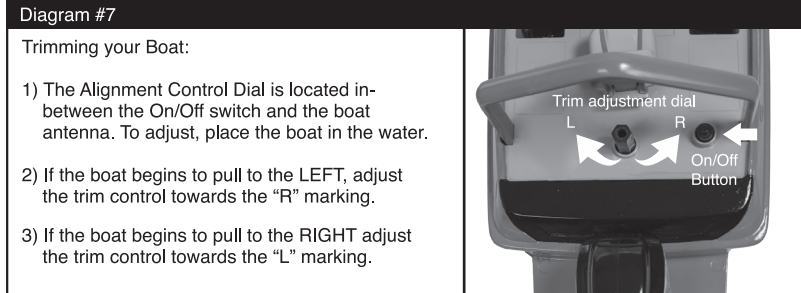


DANGER!

ALWAYS KEEP HAIR, FINGERS, CLOTHING, JEWELRY AND OTHER ITEMS AWAY FROM THE PROPELLER.

2

TRIMMING METHODS

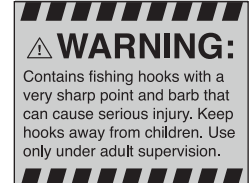
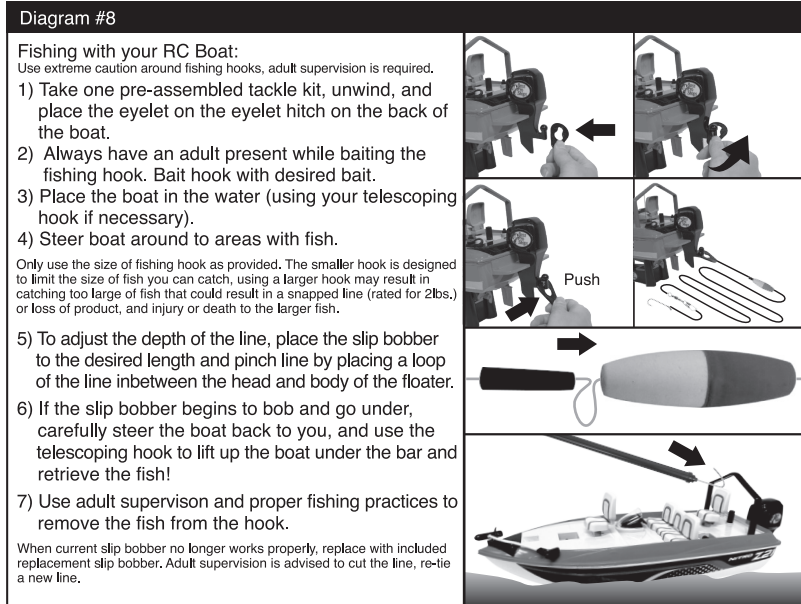


NOTE:

Operating multiple RC's with the same frequency in close proximity will cause interference and poor performance.

Works best away from electrical hazards and large obstacles.

FISHING BASICS



REMEMBER:

Always check local fishing regulations prior to use.

Determine whether a fishing license is required in your area and determine whether fishing with a remote controlled boat is permitted and legal in your area or state.

Local fishing regulations may require a fishing line to be connected from the boat to the angler. Tether line is included.

CAUTIONS AND WARNINGS

- To avoid personal injury, death or damage to product, carefully read and follow these warning.
- As with all electric products, precautions should be observed during handling and use to prevent electric shock.
- Adult supervisions advised, all assembly must be done by an adult.
- Check the boat, tackle and controller for proper set up for each use.
- Operating multiple boats with the same frequency in close proximity will cause interference and poor performance.
- Boat works best away from high voltage power lines, large buildings and walls.
- Hold the controller antenna up for the best performance.
- Recharging batteries should be done by an adult.
- To avoid electrical shock do not recharge batteries near water.
- Motor of Boat will get hot, use caution in handling.
- Do not charge a damaged, leaking, hot or wet Rechargeable Battery.
- Under no circumstance should the batteries be disposed of in a fire. This may cause injury, leakage or explosion.
- Please dispose of all battery cells properly.
- Do not break, open or disassemble the batteries.
- Do not stall the motor during use.
- When the product does not respond, slows down, or loses range, replace the batteries.
- Always keep hair, fingers, clothing, jewelry and other items away from the propeller.
- This product is for outdoor use only.

CAUTIONS OPERATING IN WATER

- Do not operate the boat where there is debris or plants in the water, as this could cause damage to the propeller or hull.
- Keep boat away from people in water, other boats or stationary objects and wildlife.
- For fresh water use only, not recommended for salt water environments. If used in salt water environments thoroughly rinse boat with fresh water directly after use.
- Never play outdoors during extreme weather, such as thunderstorms.
- Do not operate the boat when there is a strong current, large waves or wind. Best performance of boat will be in a low wake, no current area and low wind conditions .
- Avoid hard crashes.
- Use extreme caution around fishing hooks to prevent serious injury. Keep hooks away from children. Adult supervision is required for the baiting of the hook and use of product.
- Fishing line is rated for 2 lbs weight.
- Do not use a bigger fishing hook than the hooks provided. Smaller hooks are designed to limit the size of fish you can catch. Using a larger hook may catch a larger fish, resulting in a snapped line or loss of product, and injury or death to the larger fish.
- Be mindful of other fishing lines, and do not allow a fishing line to become tangled in the propeller.
- Never touch the propeller while it is turning.
- Always get the boat out of the water before the battery power fails. (If product fails before returning the boat have an adult safely retrieve).
- Always put your controller down in a secure, dry place when retrieving the boat or fish from the water.
- Never give the RC or controller to any child under the age of 3, as is contains small parts.
- Do not allow the antenna to get wet, as this will affect the distance of the controller.
- Do not use if moisture is present inside the unit, remove all batteries and thoroughly clean and dry boat before use.
- If boat capsizes or becomes submerged, turn off product, remove all batteries at once and completely drain and dry all accessible parts of the unit. Allow to air dry overnight. Do not use until product is completely dry inside.
- Never use chemicals including benzene, alcohol, or thinning agents to clean the boat, as this may damage the boat.
- When not in use, remove batteries from all compartments (boat and controller), store out of direct sunlight.
- Normal working distance is about 80 feet.
- Always check local fishing regulations prior to use. Determine whether a fishing license is required in your area and determine whether fishing with a remote controlled boat is permitted and legal in your area or state.
- Local fishing regulations may require a fishing line to be connected from the boat to the angler. Tether line is included.
- There MAY be local and state laws that prohibit or limit the use of your RC boat for fishing on public waters. It is YOUR responsibility to contact the local regulating agencies to determine if there are any restrictive regulations in your local area. At the current time we are unaware of any restrictions on private ponds, lakes, etc.
- The use of a U.S. Coast Guard approved flotation device (personal flotation device, or life jacket) by those near or in the water is recommended.

TROUBLE SHOOTING

Problems	Reasons	Solutions
Running Problems	The battery inside the radio controller is too weak.	Replace with new alkaline batteries.
	There is a weak or low reception to the radio controls.	
	The batteries inside the vehicle are too weak.	Recharge or replace with new batteries inside the vehicle.
Other	The vehicle does not respond to the radio control.	Try playing at another location.
	The radio control's frequency is disrupted by something around the environment.	Some other equipment using the same radio wave could disrupt the radio control. Either play in another location or turn off the other equipment.

This device contains licence-exempt transmitter(s)/receiver(s) that comply with Innovation, Science and Economic Development Canada's licence-exempt RSS(s). Operation is subject to the following two conditions: (1) This device may not cause interference. (2) This device must accept any interference, including interference that may cause undesired operation of the device.

This device complies with Part 15 of the FCC Rules. Operation is subject to the following two conditions:(1) This device may not cause harmful interference, and (2) This device must accept any interference received, including interference that may cause undesired operation.

NOTE:

This equipment has been tested and found to comply with the limits for a Class B digital device, pursuant to Part 15 of the FCC Rules. These limits are designed to provide reasonable protection against harmful interference in a residential installation. This equipment generates, uses and can radiate radio frequency energy and, if not installed and used in accordance with the instructions, may cause harmful interference to radio communications. However, there is no guarantee that interference will not occur in a particular installation. If this equipment does cause harmful interference to radio or television reception, which can be determined by turning the equipment off and on, the user is encouraged to try to correct the interference by one or more of the following measures:

- Reorient or relocate the receiving antenna.
- Increase the separation between the equipment and receiver.
- Connect the equipment into an outlet on a circuit different from that to which the receiver is connected.
- Consult the dealer or an experienced radio/ TV technician for help.

Any changes or modifications not expressly approved by the party responsible for compliance could void the user's authority to operate the equipment.

Controller:
Model #: B1176T

Full Function Radio Control Boat:
Model #: B1176R

WARNING:
CHOKING HAZARD-
Small parts not for children
under 3 years.



MADE IN CHINA

3

4

5