

## EA-XRN-9300/9301 Label Examples and Locations

Date: 2021-03-15

- The labelling is divided in to two labels as shown in Figure 1 below:
  - Main label: All regulatory codes, symbols, addresses etc.
  - Additional label: part name, part number and serial number.

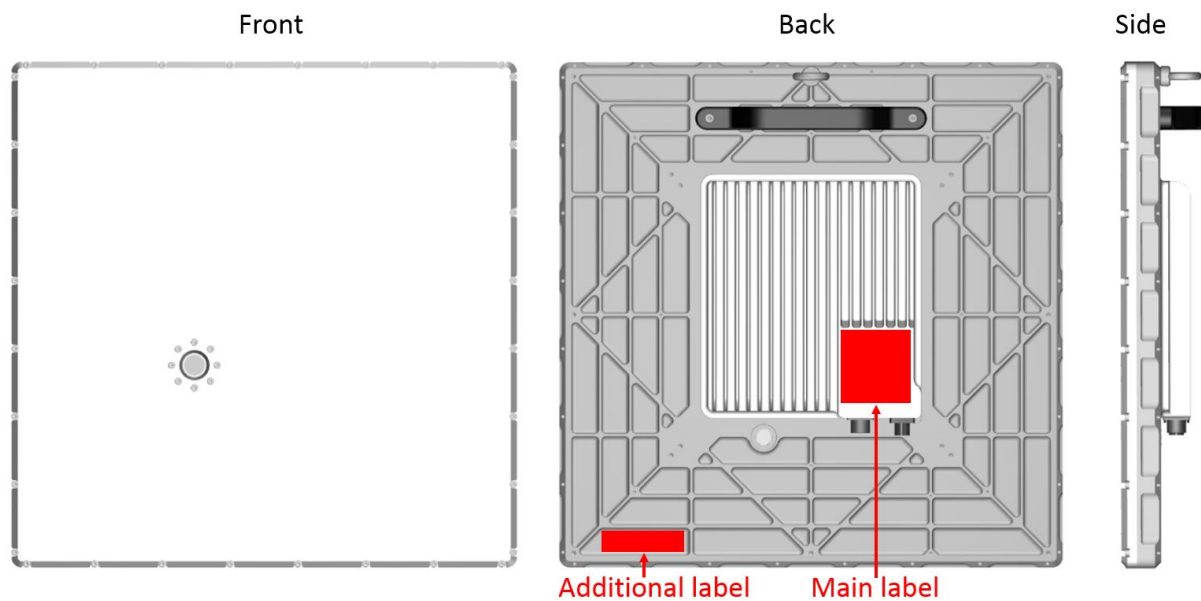


Figure 1: Label location(s) on EA-XRN-9300 series sensor.

- A sample of the main label is shown in Figure 2.
- Samples of the additional labels for the EA-XRN-9300 and EA-XRN-9301 sensors are shown in Figure 3 and Figure 4. The number after SN: is the device serial number.



Figure 2: Sample main label.

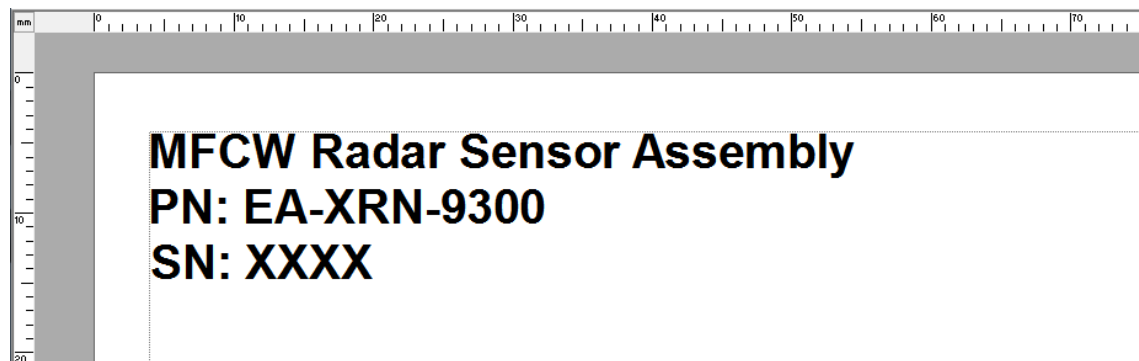
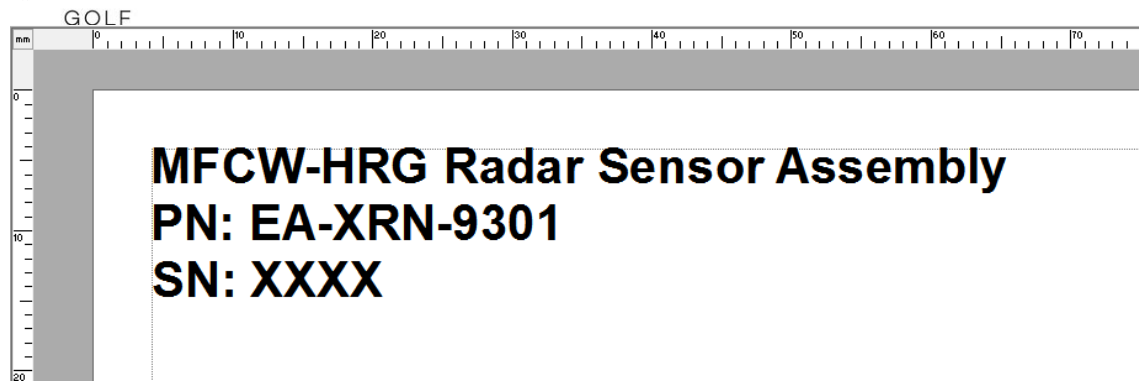


Figure 3: Sample additional label: EA-XRN-9300 sensor.



*Figure 4: Sample additional label: EA-XRN-9301 sensor.*