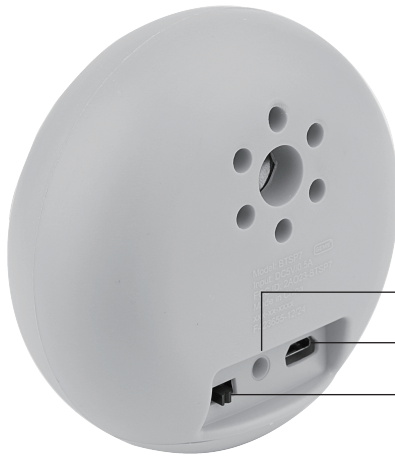


4.65 inches

6.5 inches

Wireless Speaker

Rechargeable Speaker



Indicator
Micro - USB
Charging Port
On/Off Switch

*product design may vary

Whats Included:

- Wireless Speaker
- Micro-USB to USB-A Charging Cable

Indicator:

- Flashing Red - Low Battery
- Solid Red - Charging
- No Red Light - Fully Charged
- Flashing Blue - Pairing Mode/Play Music
- Solid Blue - Bluetooth Connected
- Bing Bong Tone - Power On
- Descending Chime - Power Off (when automatically shut off)
- Double Beep - Ready to Pair
- Electric Tone - Paired
- Double Dial Beeps - Low Battery
- Double Beep Followed by a Descending Chime - Disconnected

FRONT

Pairing:

- Use the switch to turn the speaker on, the indicator will flash blue to indicate it is ready to pair.
- Use Bluetooth settings on your phone to pair with **Speaker 05**
- Blue light turns solid followed by a chime - pairing successful.
Note: when the speaker is turned on and not connected to Bluetooth, it will automatically shut off after 5 minutes.

Charging:

- Full charge requires approximately 2 hours.
- Using the micro-USB cable provided, plug the micro-USB end into the speaker and the USB-A end into a USB power supply of at least DC 5V 0.5A. **warning:** please use UL compliant power supply.
- The indicator light will turn red when the speaker is charging; the indicator light will turn off when charging is complete.

Troubleshooting:

- If the speaker is not working correctly, switch it on/off to reset.
- If the speaker won't turn on, recharge the battery and try again.
- If the speaker won't charge, make sure the supply works, is 5V 0.5A, and not damaged.
- If the speaker makes no sound or does not show as an available device, make sure it is not paired with another device, if so unpair the device and repair the desired device.

Safety:

- Do not modify or repair this device.
- Do not use in high temperatures or extreme weather.
- Do not use chemical detergents to clean your device, use a soft dry cloth.

SAVE THESE INSTRUCTIONS

FCC ID:2AO23-BTSP7 Model: BTSP7 Input: 5V \approx 0.5A Made in China

This device complies with part 15 of the FCC Rules. Operation is subject to the following two conditions: 1) This device may not cause harmful interference, and 2) this device must accept any interference received, including interference that may cause undesired operation. Warning: Changes or modifications to this unit not expressly approved by the party responsible for compliance could void the user's authority to operate the equipment.

NOTE: This equipment has been tested and found to comply with the limits for a Class B digital device, pursuant to Part 15 of the FCC Rules. These limits are designed to provide reasonable protection against harmful interference in a residential installation. This equipment generates, uses and can radiate radio frequency energy and, if not installed and used in accordance with the instructions, may cause harmful interference to radio communications.

However, there is no guarantee that interference will not occur in a particular installation. If this equipment does cause harmful interference to radio or television reception, which can be determined by turning the equipment off and on, the user is encouraged to try to correct the interference by one or more of the following measures:

- Reorient or relocate the receiving antenna.
- Increase the separation between the equipment and receiver.
- Connect the equipment into an outlet on a circuit different from that to which the receiver is connected.
- Consult the dealer or an experienced radio/TV technician for help.

The device has been evaluated to meet general RF exposure requirements. The device can be used in portable exposure conditions without restriction.

gemsfindyours.com 7157 Shady Oak RD, Eden Prairie, MN 55344 Distributed by Chug, Inc.

For qualified repair specialists requesting repair information and parts please contact the original manufacturer at customersupport@gemsfindyours.com



BACK