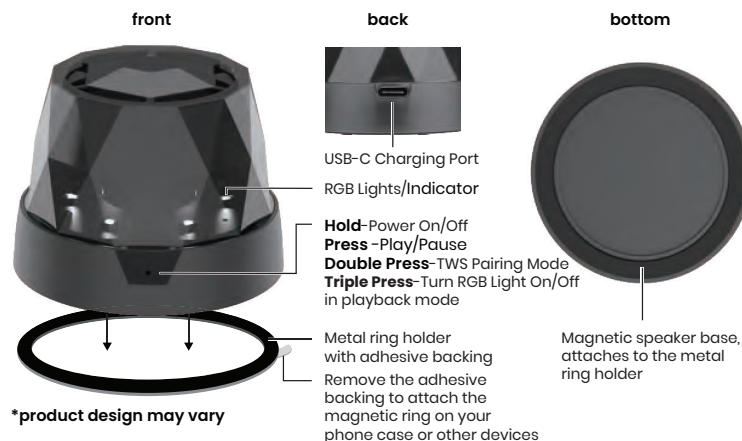


4.65 inches

6.5 inches

# RGB Speaker

Wireless Portable Design



## Whats Included:

- RGB Speaker
- USB-A to USB-C Charging Cable
- Metal Ring Holder

## Indicator:

- Solid Red - Charging
- No Red Light - Fully Charged
- Bing Bong Tone - Power On
- Descending Chime - Power Off
- Double Beeps - Ready to Pair
- Electric Tone - Paired
- Double Dial Beeps - Low Battery
- Double Beeps Followed by a Descending Chime - Disconnected

## Pairing:

- Hold power button for 3 seconds to turn on the speaker, the RGB light will turn on.
- Use the Bluetooth settings on your phone to pair with **Speaker 13**
- Electric tone - pairing successful.

Note: when the speaker is turned on and not connected to Bluetooth, it will automatically shut off after 5 minutes. In the power-off state, press and hold power button for 8 seconds to reset.

## TWS (true wireless stereo) pairing

- You can pair two speakers of this same model together to get true stereo sound.
- Turn Bluetooth off on your device; place two matching speakers together.
- Power one of the speakers on, and double click the power button to enter TWS pairing. You will hear a chime when ready to pair; then, power the other speaker on and double click the power button accordingly.
- Both speakers will automatically pair, you will hear a chime when they pair.
- After the speakers are paired, use your device to connect to **Speaker 13**
- To maintain TWS pairing, turn Bluetooth off on your device before powering the speakers back on; the speakers will pair automatically, then re-pair with your device.

## Charging:

- Full charge requires approximately 2 hours.
- Using the USB-C cable provided, plug USB-C end into speaker and USB-A end into a USB power supply of at least DC 5V 500mA. **warning:** please use UL compliant power supply.
- The indicator light will turn red when charging, the indicator light will turn off when charging is complete.

## Troubleshooting:

- If the speaker is not working correctly, hold the power button to reset.
- If the speaker won't turn on, recharge the battery and try again.
- If the speaker won't charge, make sure the power supply works, is 5V 500mA, and not damaged.
- If the speaker makes no sound or does not show as an available device, make sure it is not paired with another device, if so unpair the device and repair the desired device.

## Safety:

- The speaker is splash resistant but do not submerge it under water.
- Do not modify or repair this device.
- Do not use in high temperatures or extreme weather.
- Do not use chemical detergents to clean your device, use a soft dry cloth.

SAVE THESE INSTRUCTIONS

FCC ID:2A023-BTSP15 Model: BTSP15 Input: 5V ≈ 500mA Made in Cambodia

This device complies with part 15 of the FCC Rules. Operation is subject to the following two conditions: 1) This device may not cause harmful interference, and 2) this device must accept any interference received, including interference that may cause undesired operation. Warning: Changes or modifications to this unit not expressly approved by the party responsible for compliance could void the user's authority to operate the equipment.

NOTE: This equipment has been tested and found to comply with the limits for a Class B digital device, pursuant to Part 15 of the FCC Rules. These limits are designed to provide reasonable protection against harmful interference in a residential installation. This equipment generates, uses and can radiate radio frequency energy and, if not installed and used in accordance with the instructions, may cause harmful interference to radio communications.

However, there is no guarantee that interference will not occur in a particular installation. If this equipment does cause harmful interference to radio or television reception, which can be determined by turning the equipment off and on, the user is encouraged to try to correct the interference by one or more of the following measures:

- Reorient or relocate the receiving antenna.
- Increase the separation between the equipment and receiver.
- Connect the equipment into an outlet on a circuit different from that to which the receiver is connected.
- Consult the dealer or an experienced radio/TV technician for help.

The device has been evaluated to meet general RF exposure requirements. The device can be used in portable exposure conditions without restriction.

gemafindyour.com 7157 Shady Oak RD, Eden Prairie, MN 55344 Distributed by Chug, Inc.

For qualified repair specialists requesting repair information and parts please contact the original manufacturer at customersupport@gemafindyour.com



FRONT

BACK