

EXHIBIT A - FCC ID LABEL AND LOCATION

FCC ID Label

Langi SH700M Wireless Video Transmitter
Model: SH700M
FCC ID: 2ANTJ6001000RT
IC: 23292-6001000RT

This device complies with part 15 of the FCC rules.
Operation is subject to the following two conditions:
(1) This device may not cause harmful interference, and
(2) this device must accept any interference received,
including interference that may cause undesired operation.

Langi SH1000M Wireless Video Transmitter
Model: SH1000M
FCC ID: 2ANTJ6001000RT

This device complies with part 15 of the FCC rules.
Operation is subject to the following two conditions:
(1) This device may not cause harmful interference, and
(2) this device must accept any interference received,
including interference that may cause undesired operation.

FCC ID Label Location Information



The label shown shall be permanently affixed at a conspicuous location on the device and be readily visible to the user at the time purchase (Labeling requirements per 2.925)

EXHIBIT A - FCC ID LABEL AND LOCATION

FCC ID Label

Ghost Eye 600M Wireless Video Transmitter
Model: 600M
FCC ID: 2ANTJ6001000RT
IC: 23292-6001000RT
This device complies with part 15 of the FCC rules. Operation is subject to the following two conditions:(1)This device may not cause harmful interference, and (2) this device must accept any interference received,including interference that may cause undesired operation.

Ghost Eye 1000M Wireless Video Transmitter
Model: 1000M
FCC ID: 2ANTJ6001000RT
This device complies with part 15 of the FCC rules.Operation is subject to the following two conditions:(1)This device may not cause harmful interference,and (2) this device must accept any interference received,including interference that may cause undesired operation.

FCC ID Label Location Information



The label shown shall be permanently affixed at a conspicuous location on the device and be readily visible to the user at the time purchase (Labeling requirements per 2.925)

FCC ID LABEL AND LOCATION

FCC ID Label

Ghost Eye 600M-ENG Wireless Video Transmitter

Model: 600M-ENG

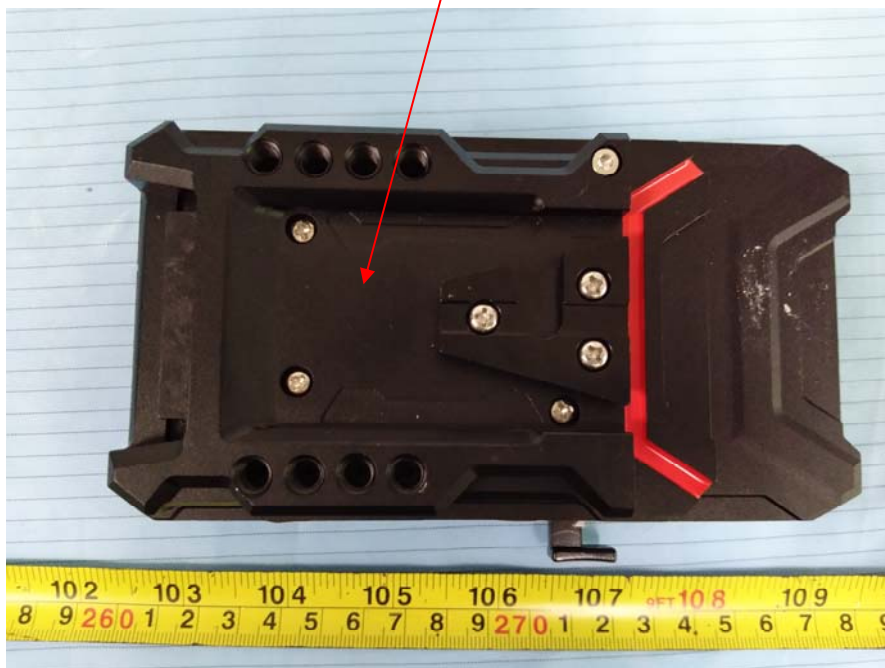
FCC ID: 2ANTJ6001000RT

Ghost Eye 1000M-ENG Wireless Video Transmitter

Model: 1000M-ENG

FCC ID: 2ANTJ6001000RT

FCC ID Label Location Information



The label shown shall be permanently affixed at a conspicuous location on the device and be readily visible to the user at the time purchase (Labeling requirements per 2.925)