

fifine | AMPLIGAME

A22 USER'S GUIDE



AS Version:24-V2

CONTENTS

Product Description	1-4
Quick Start	5-10
RGB Button and Lighting Modes	11-12
Computer Set-up (Windows&Mac OS)	13-15
Troubleshooting	16-18
Important Notice	18
Specification	19

WHAT'S IN THE BOX ?

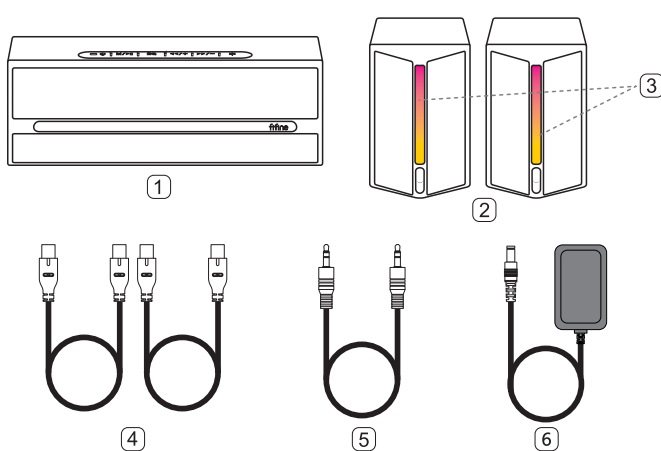
- 1X Subwoofer Speaker
- 2X Satellite Speakers (Left&Right)
- 2X USB-C to USB-C Cable (Used to connect the Subwoofer Speaker and Satellite Speakers)
- 1X 3.5mm to 3.5mm Audio Cable
- 1X Power Adapter
- 1X User's Manual

PRODUCT DESCRIPTION

1. Speakers Introduction

- Subwoofer Speaker-Output the music. Do not press or cover it, which may affect the output sound quality.
- Satellite Speakers-Connected to subwoofer speaker to output the music. (Cannot be used alone)
- RGB Light-The multicolored RGB on satellite speakers with 18 kinds of RGB mode. You can control the RGB by the 12 RGB button.
- USB-C to USB-C Cable-Used to connect subwoofer speaker and satellite speakers.
- 3.5mm to 3.5mm Audio Cable-Used to connect subwoofer speaker and computer or cellphone.

6) Power Adapter-Supply power to the speakers.

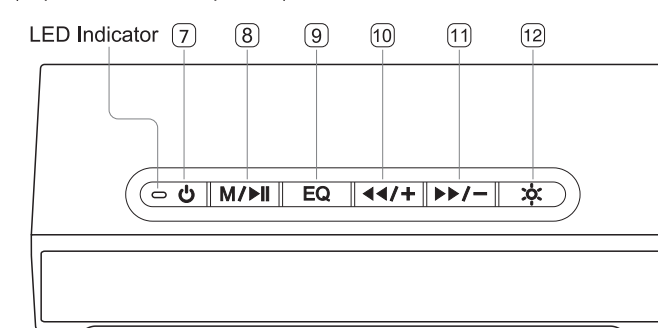


2. Function Keys Introduction

- Power On/Off Button-Long press and hold for 3 seconds to turn on/off the speaker. LED indicator flicking means that the speaker is powered on but turned off. LED indicator is always on, which means that the speaker is powered on and turned on.
- Mode Switch/Mute Button-Short press to switch 4 modes, including USB Input, Optical Input, Auxiliary Input and Bluetooth Mode. Long press and hold for 3 seconds to mute or play music. (Music can be paused and muted in Bluetooth Mode and USB Input Mode, but only muted in Auxiliary Input Mode.)
- EQ Mode Switch-Short press to switch EQ modes of speakers, including game, movie and music.
- Prev Music/Volume Up-Long press and hold for 3 seconds to skip to the previous music (Only available for Bluetooth Mode and USB Input Mode). Short press to increase speaker volume. (If you hear "beep" notice tone, which means the speaker has reached its maximum volume.)

- Next Music/Volume Down-Long press and hold for 3 seconds to skip to the next music (Only available for Bluetooth Mode and USB Input Mode). Short press to decrease speaker volume.
- RGB Button-Long press and hold for 3 seconds to turn on/off the RGB light. Short press to switch the RGB light mode.

(Top of Subwoofer Speaker)



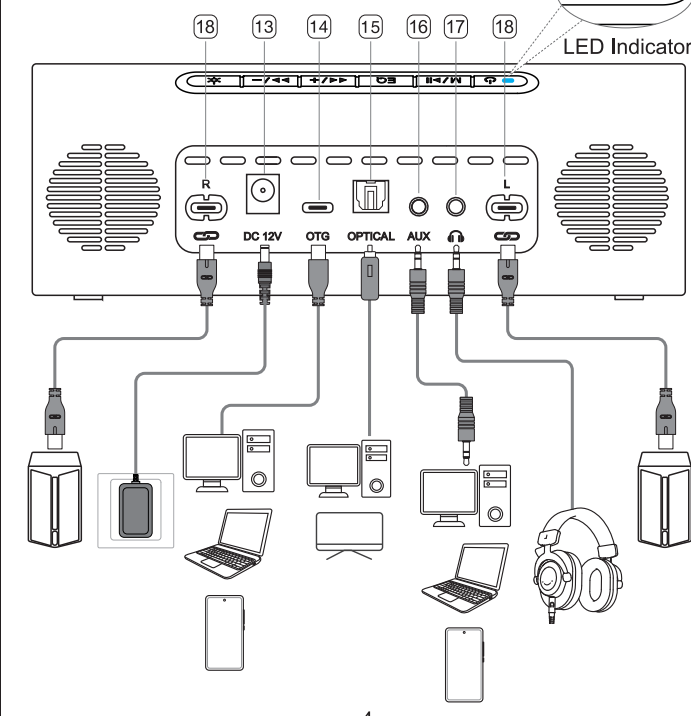
3. Interface Introduction

- DC Port-Connect the power adapter (included) to supply power for speakers and LED indicator will be on when speaker get power.
- OTG Port-Connect to the computer or cellphone to play music.
- Optical Interface-Connect to computer or TV via fiber optic cable (not included).
- AUX Interface-Connect computer or cellphone to playback audio via included 3.5mm to 3.5mm audio cable.
- 3.5mm Headphones Jack-Connect 3.5mm headphones to listen to the output audio from speaker.
- Type-C Port (R/L)-Connect satellite speakers and subwoofer to transfer power and digital audio signal via included USB-C to USB-C cable.

Tips:

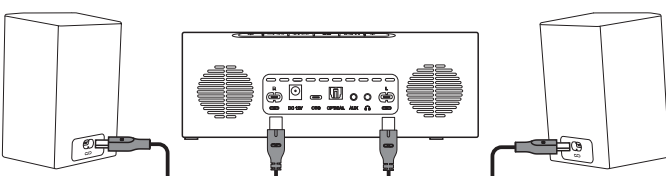
- If the audio output port on your cellphone is not a 3.5mm port, please use an adapter to connect to your cellphone and speaker.
- If you use the speakers with computer via Auxiliary input, make sure that the speaker is connected to the headphone jack of computer.
- Please decrease the speaker volume before unplugging or plugging your headphones from or into the speaker to avoid excessive loudness.

(Back of Subwoofer Speaker)

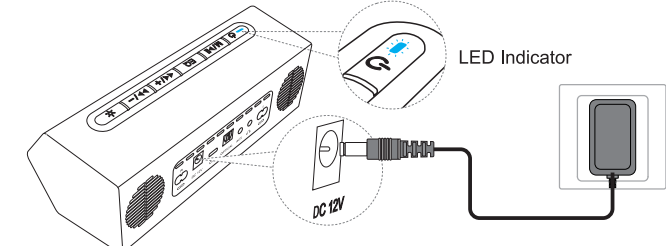


QUICK START

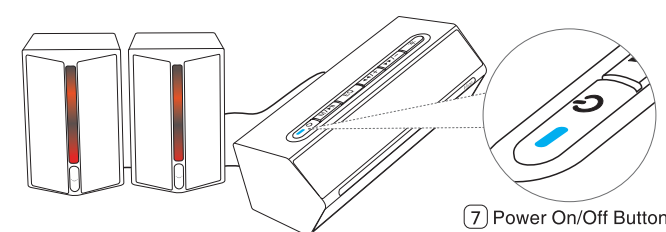
- Please connect the subwoofer speaker and satellite speakers via the included USB-C to USB-C cables.



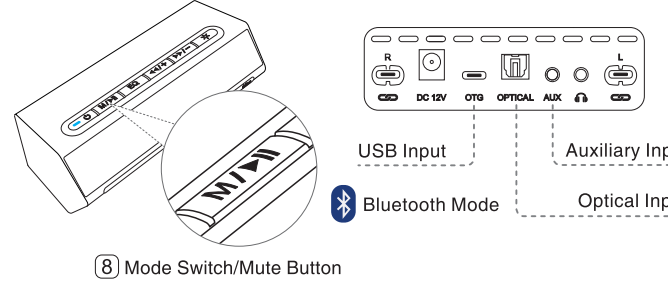
- Connect power adapter to supply power for the speakers. LED indicator will flicker.



- Long press and hold Power On/Off Button for 3 seconds to turn on the speakers. LED indicator will change to be always on and RGB of satellite speakers will be on.



- Press Mode Switch/Mute Button to switch the speaker modes according to your demand. There are 4 connection modes of speakers, including USB Input, Optical Input, Auxiliary Input and Bluetooth Mode.

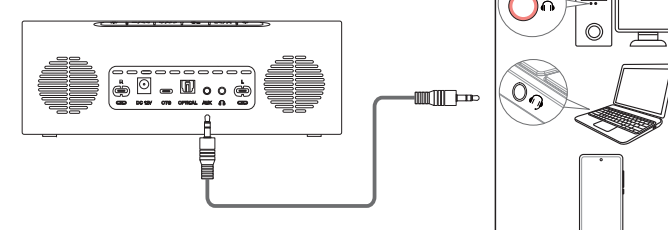


Auxiliary Input

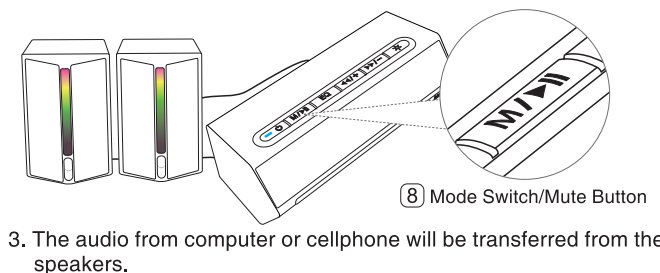
- Use the included 3.5mm to 3.5mm audio cable to connect subwoofer speaker and computer or cellphone.

Tips:

- If you use it with computer, make sure it is connected to the headphone jack of computer.

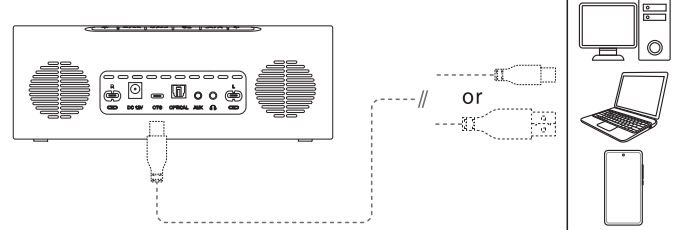


- Press Mode Switch/Mute Button and switch to auxiliary input. Notice tone "Auxiliary Input" will be heard.

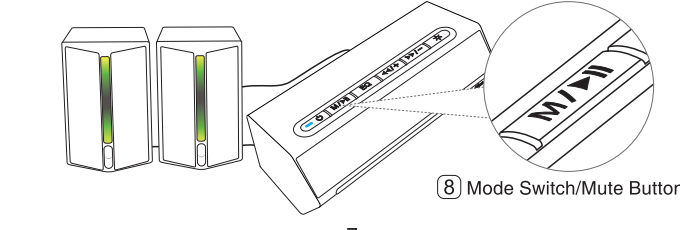


USB Input

- Use a USB-C to USB-A/C cable (not included) that can transmit audio data to connect the subwoofer speaker and your computer or cellphone.

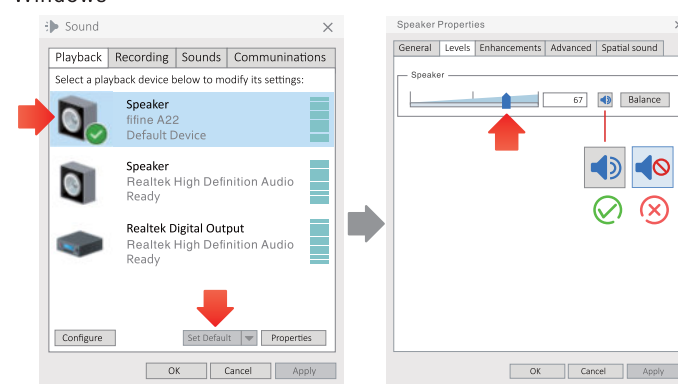


- Press Mode Switch/Mute Button and switch to USB input. Notice tone "USB Input" will be heard.

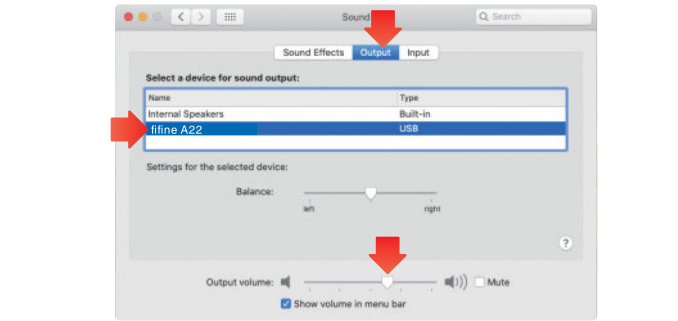


- Set fifine A22 as default device on computer settings (Windows & Mac OS) and you can drag the progress bar to adjust volume of speakers.

Windows



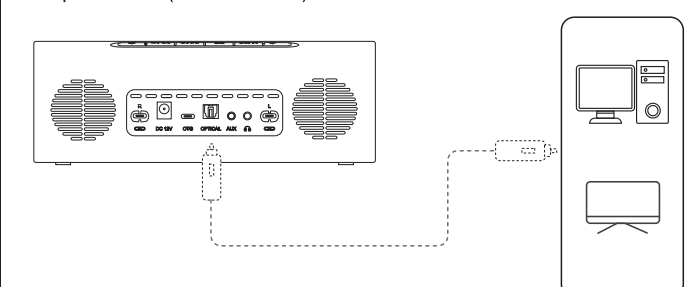
Mac OS



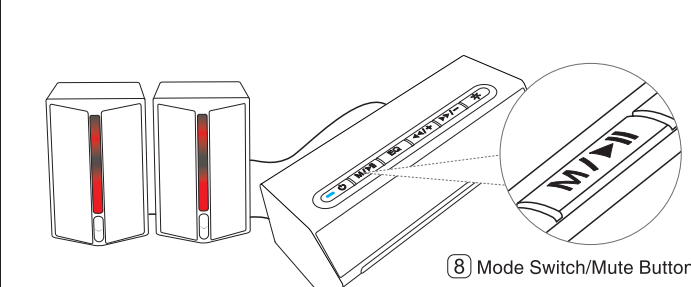
- The audio from computer or cellphone will be transferred from the speakers.

Optical Input

- Connect the subwoofer speaker and computer or TV via fiber optic cable (not included).



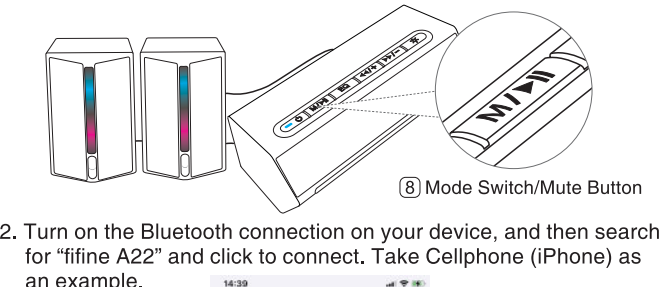
- Press Mode Switch/Mute Button and switch to optical input. Notice tone "Optical Input" will be heard.



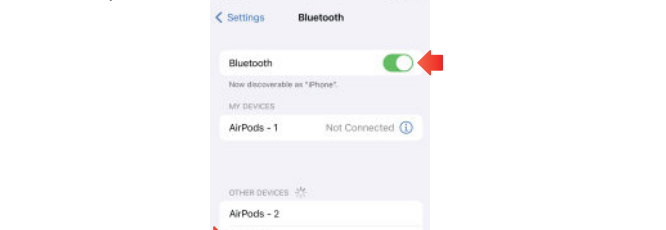
- The audio from computer or TV will be transferred from the speakers.

Bluetooth Mode

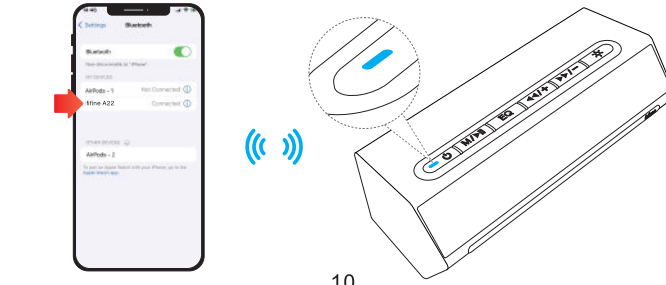
- Press Mode Switch/Mute Button and switch to Bluetooth Mode. Notice tone "Bluetooth Mode" will be heard.



- Turn on the Bluetooth connection on your device, and then search for "fifine A22" and click to connect. Take Cellphone (iPhone) as an example.



- Notice tone "Connected" will be heard and LED indicator will be always on, which means Bluetooth connection is successful.

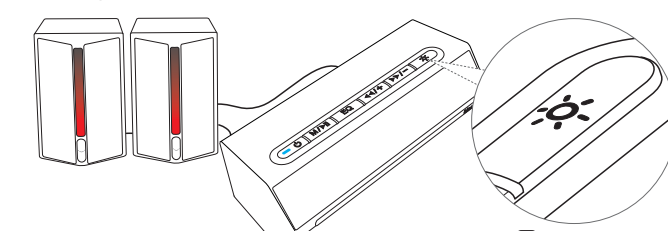


RGB BUTTON AND LIGHTING MODES

Tips:

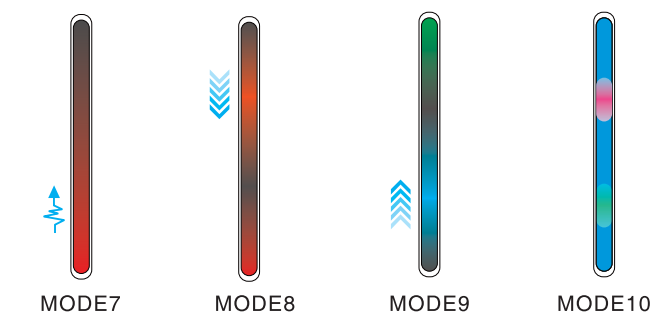
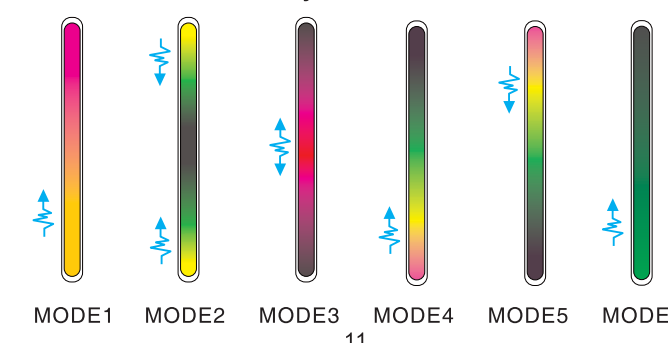
- Make sure that the Power On/Off Button of the subwoofer speaker is turned on, or the RGB may not be lighted up.

- Long press and hold for 3 seconds to turn on or off RGB lighting. Short press to select RGB modes and colors.

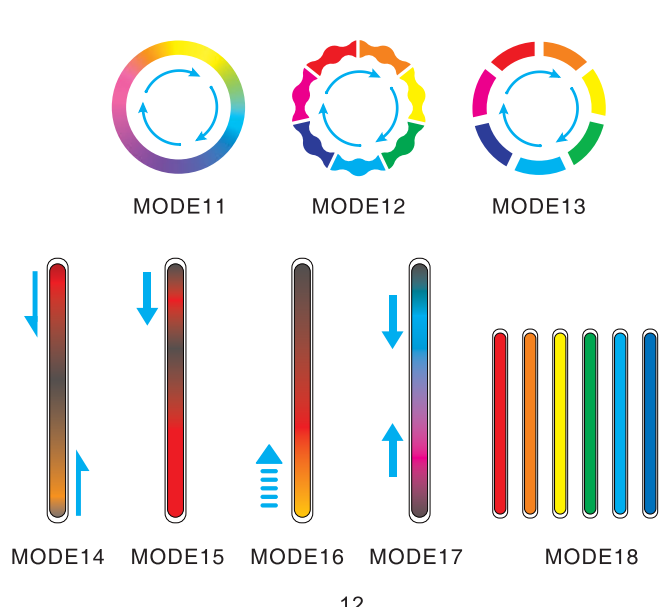


- There are total 18 kinds of RGB modes (As the picture shown below). Some of modes will beat with the rhythm of music.
- Power-off Memory Function: When the speakers are powered or RGB is turned on next time, RGB is still in the mode you last powered/turned off.

Modes will beat with the rhythm of music.



Modes will NOT beat with the rhythm of music.

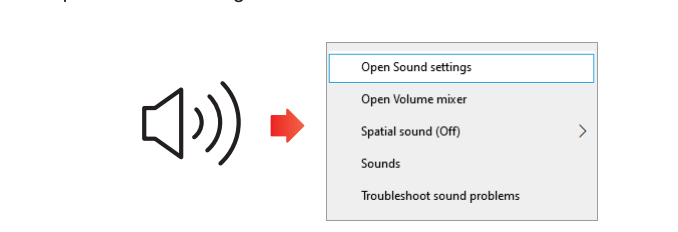


COMPUTER SET-UP (Windows & Mac OS)

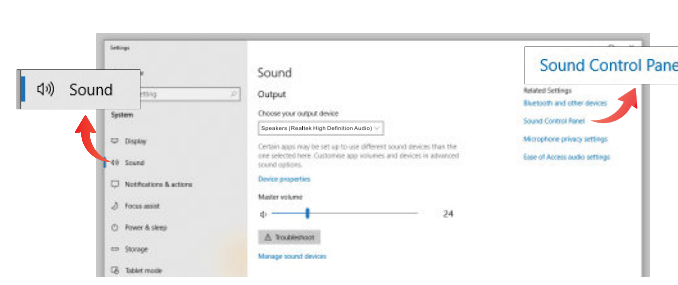
Take the Auxiliary Connection as an example. Connect the subwoofer speaker to the headphones jack of computer or Mac. Switch speaker connection mode to Auxiliary Input and notice tone "Auxiliary Input" will be heard, which means Auxiliary Input connected successfully. There may be no pop-up message reminding this process though.

Windows

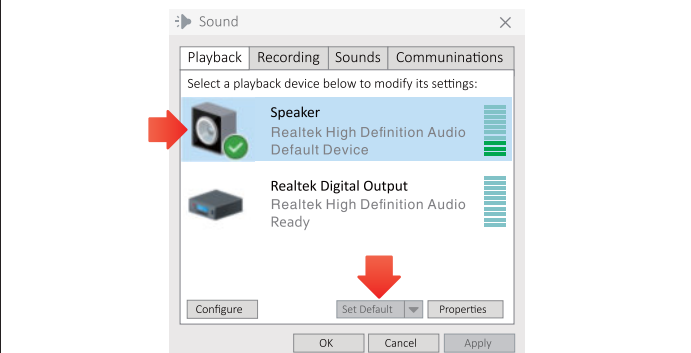
- Right click the speaker icon at the bottom right of the screen. Click "Open Sound Settings".



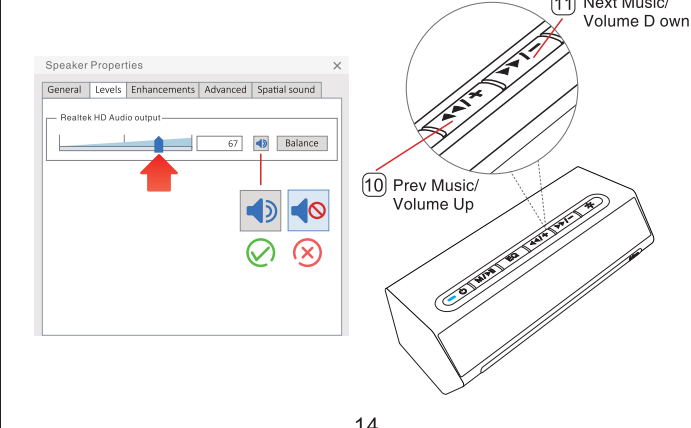
- Click the Sound Control Panel.



- Set default device. Click "Playback" tab - Choose "Speaker (Realtek High Definition Audio)" - Click "Set Default". When you playback audio, the volume meter will turn green and bounce.

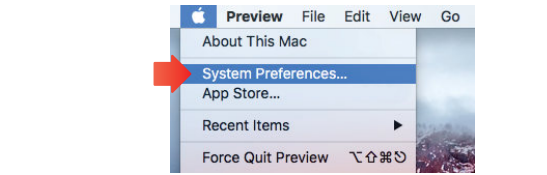


- Adjust output volume. Double click "Speaker (Realtek High Definition Audio)" - Click "Levels" tab - Drag the progress bar. (You can also adjust volume of speakers via volume button on the subwoofer speaker.)

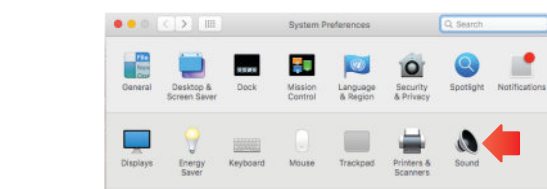


Mac OS

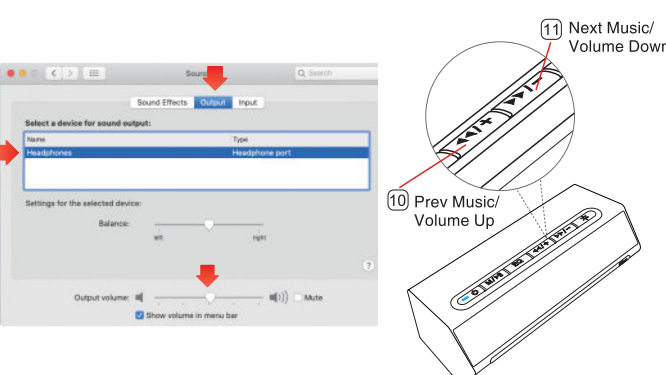
- Go to the System Preferences.



- Click "Sound" icon - display "Sound preference".



- Set default device. Click "Output" tab - Choose "Headphones" - Drag progress bar to adjust output volume. (You can also adjust volume of speakers via volume button on the subwoofer speaker.)



TROUBLESHOOTING

Problem	Solution
No Audio Output	<ul style="list-style-type: none">Make sure that the power adapter is connected to speaker successfully and Power On/Off Button is turned on. LED indicator will be always on.Press the Mode Switch/Mute Button to switch connection mode the speakers are connected to.If you use the speakers with computer via Auxiliary Input, make sure that the speaker is connected to the headphone jack of computer.Make sure that the volume of music, speakers, devices and software are not adjusted to zero.Make sure to choose the correct output device in computer set-up. Please choose "Speaker (fifine A22)" as output device in USB connection and choose "Speaker (Realtek High Definition Audio)" in Auxiliary connection.
USB connection	

Problem	Solution
Auxiliary connection	
No Audio Output	<ul style="list-style-type: none">Make sure the Speaker is active under the "Levels" tab if use Windows, and "Mute" is clicked off if use Mac OS.
Windows	
Mac OS	
Unsuccessful Bluetooth Connection Pairing	<ul style="list-style-type: none">Make sure that the power adapter is connected to speaker successfully.Make sure that the device Bluetooth is turned on and speaker is switched to Bluetooth Mode.Make sure that the distance between the device and the speakers (without obstacle) does not exceed 49ft (15m), or the fifine A22 may not be searched.

Problem	Solution
Music with Static Noises	<ul style="list-style-type: none">Try to play different audio files to see if it's a quality issue of the file.Change different devices (eg. another PC) to check for audio output compatibility or current interference.
RGB Function Not Working	<ul style="list-style-type: none">Make sure that the Power On/Off Button of the subwoofer speaker is turned on, or the RGB may not be lighted up.Make sure the USB-C to USB-C cable are plugged fully when connect subwoofer speaker and satellite speakers.Make sure that subwoofer speaker and RGB button are turned on.Some of RGB modes do not show up when no music playing. Short press the RGB button to switch modes or play strong rhythmic music to check if the lights will be on.
IMPORTANT NOTICE	<ul style="list-style-type: none">Please connect power adapter to speaker for power supply and then press and hold Power On/Off Button for 3 seconds to turn on the speakers.The voltage of power adapter used can not exceed DC/12V and AC/100-240V, high voltage may damage the speakers.Please decrease the speaker volume before unplugging or plugging your headphones from or into the speaker to avoid excessive sound.We suggest that you use the USB-C to USB-C cables included in the package to connect the speakers, otherwise extra USB-C to USB-C cables may cause unstable work.

SPECIFICATION

Model Number: A22
Power Supply: DC Adapter
Power Input: DC 12V/2A
Power Supply Voltage: AC/ 100-240 V
Bluetooth Version: Bluetooth 5.0 (Compatible with Bluetooth V4.2 and V2.1 +EDR)

WARRANTY

Every Fifine product comes with a Limited Warranty that in normal use of product will be free of any defects in material or workmanship for a period of one year from its original date of purchase. For detailed warranty info, please refer to the warranty policy on our website, or contact us directly.

CERTIFICATION

Eligible to bear CE Marking.
Authorized European Representative:
Name: Sea&Mew Consulting GmbH
Address: Mittenhuber Straße 4, 92318 Neumarkt, Deutschland
Tel: +4915224685061
Authorized British Representative:
Name: YH Consulting Limited
Address: YH Consulting Limited Office 147, Centurion House, London Road, Staines-upon-Thames, Surrey, TW18 4AX, UK
Tel: +44 07514-677868



FCC Caution:

This device complies with part 15 of the FCC Rules. Operation is subject to the following two conditions: (1) this device may not cause harmful interference, and (2) this device must accept any interference received, including interference that may cause undesired operation.

Any changes or modifications not expressly approved by the party responsible for compliance could void the user's authority to operate the equipment.

NOTE: This equipment has been tested and found to comply with the limits for a Class B digital device, pursuant to Part 15 of the FCC Rules. These limits are designed to provide reasonable protection against harmful interference in a residential installation. This equipment generates, uses and can radiate radio frequency energy and, if not installed and used in accordance with the instructions, may cause harmful interference to radio communications. However, there is no guarantee that interference will not occur in a particular installation.

If this equipment does cause harmful interference to radio or television reception, which can be determined by turning the equipment off and on, the user is encouraged to try to correct the interference by one or more of the following measures:

- Reorient or relocate the receiving antenna.
- Increase the separation between the equipment and receiver.
- Connect the equipment into an outlet on a circuit different from that to which the receiver is connected.
- Consult the dealer or an experienced radio/TV technician for help.

To maintain compliance with FCC's RF Exposure guidelines, This equipment should be installed and operated with minimum distance between 20cm the radiator your body: Use only the supplied antenna

ISED Statement

English: This device contains licence-exempt transmitter(s)/receiver(s) that comply with Innovation, Science and Economic Development Canada's licence exempt RSS(s). Operation is subject to the following two conditions:

- (1) This device may not cause interference.
- (2) This device must accept any interference, including interference that may cause undesired operation of the device.

The digital apparatus complies with Canadian CAN ICES-3 (B)/NMB-3(B).

French: Cet appareil contient des émetteurs/récepteurs exempts de licence qui sont conformes aux RSS exemptés de licence d'Innovation, Sciences et Développement économique Canada.

L'exploitation est soumise aux deux conditions suivantes :

- (1) Cet appareil ne doit pas provoquer d'interférences.
- (2) Cet appareil doit accepter toute interférence, y compris les interférences susceptibles de provoquer un fonctionnement indésirable de l'appareil.

L'appareil numérique du ciem conforme canadien peut - 3 (b) / nmb - 3 (b).

This device meets the exemption from the routine evaluation limits in section 2.5 of RSS 102 and compliance with RSS 102 RF exposure, users can obtain Canadian information on RF exposure and compliance.

cet appareil est conforme à l'exemption des limites d'évaluation courante dans la section 2.5 du cmr - 102 et conformité avec rss 102 de l'exposition aux rf, les utilisateurs peuvent obtenir des données canadiennes sur l'exposition aux champs rf et la conformité.

This equipment complies with Canada radiation exposure limits set forth for an uncontrolled environment.

Cet équipement est conforme aux limites d'exposition aux rayonnements du Canada établies pour un environnement non contrôlé.

This equipment should be installed and operated with minimum distance 20cm between the radiator & your body.

Cet équipement doit être installé et utilisé à une distance minimale de 20 cm entre le radiateur et votre corps.