



Quick Start Guide

Wireless Smart IP Camera



Easy setup for remote access



ACCloud



iOS



Android

CE FC

Smartphone Remote Monitoring

NB: This instruction takes android App as an example,iOS App is a slightly difference

Download App

Scan the QR Code or search ACCloud
(in App store or Google play) to download
the free app, install it on smart phone



ACCloud



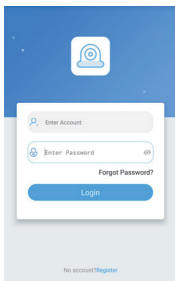
iOS



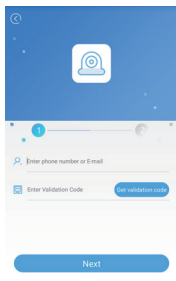
Android

Personal Account Registration

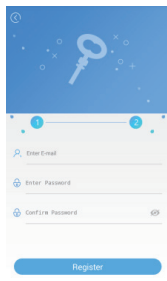
- Start the mobile app “ACCloud”
- Click “Register ” in the bottom of interface
- Enter phone number to get validation code, click Next to enter email box, password, then save it.



Login Interface



Registration



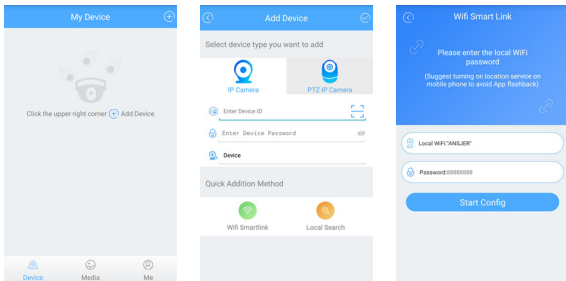
Login Password Setting

NB: 1.Register by mobile phone number can get validation code automatically,
while need to get into Email box to find code if register by email box.

2.Email box is used to retrieve password when it is forgotten.

Add Device

Login the app, get into the main interface (My Device), click + to add device, 4 different options of device addition are available.



My Device

Select Addition Method

Wifi Smart link

1. WiFi Smartlink

NB: All wireless cameras have to be connected to network via WiFi Smartlink for the first time. Do it as following steps,

- Turn on smart phone WiFi signal switch, and make it be connected to network
- Connect camera with power supply and wait for about 40 Seconds until ready to connect
- Login the App, select the device type (IP Camera or PTZ IP Camera)
- Click WiFi Smartlink, enter WiFi network password and start config (it can be configured and connection succeed in 20-40 seconds)
- Returned to the interface of Add Device (if connection succeed), enter camera password (Default: admin), camera name
- Click "✓" in the upper right corner to save

2. Manual Addition

NB: only working when camera has been connected to network via WiFi Smartlink

- Choose device type (IP Camera or PTZ IP Camera)
- Enter Device ID by manual (or scan UID QR code)
- Enter Password (Default: admin), device name
- Click "✓" in the upper right corner to save

3. Local Search

NB: only working when camera has been connected to network via WiFi Smartlink

- Choose device type (IP Camera or PTZ IP Camera)
- Turn on mobile phone WiFi setting, make it connect with the same LAN as Camera's
- Click Local Search, Device ID will be displayed in a few seconds
- Choose the intended ID to add
- Enter password (Default: admin), Device name
- Click "✓" in the upper right corner to save

4. RJ45 Cable Connection

NB: only working for outdoor bullet camera (with RJ45 Connector)


- Connect bullet camera with Router via RJ45 Cable
- Choose device type on App (IP Camera or PTZ IP Camera)
- Enter camera ID (by manual), password (Default: admin) and device name
- Click "✓" in the upper right corner to save

App Function Introduction

1. App Information

- Change password: change app login password
- Update App: update your app to the latest version
- Fingerprint login: no need to enter password if fingerprint touch function is available in your phone

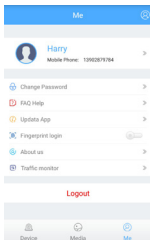
2. Device Information

-  Click to display QR Code of device UID (in the left bottom corner)
- Video: Click to start recording or stop recording
- Screen Shot: Click to catch photo
- Event Playback: Records playback, (Motion detection video or full time video)
- SD/HD: Change video resolution(Standard Definition,High Definition)
- Intercom: Dual-Way talk if device support(Outdoor bullet camera does not support this)

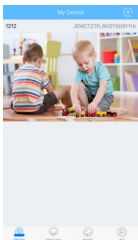
NB: Screen touch is able to control direction moving if PTZ IP camera is connected

3. Device System Setting

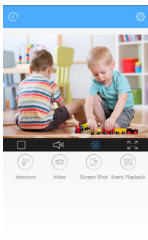
- Change Password: Change the device password on App, the default password is admin
- Video Setting: Choose recording mode, switch off, Full time recording or Alarm Recording
- Alarm Setting: Motion switch on or off, and change motion detection sensitivity number
- SD Card Format: Indicates storage space and delete records
- Update Online: Click to update the camera firmware if new version is available
- Alarm Push Notification: Switch on to receive reminding message



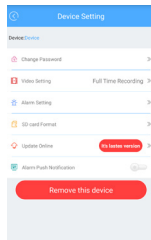
My Profile



Device Information



Device Information



Device System Setting

FAQ:

1.Q: Why failed to search the device when adding ?

A: Make sure if device connected to network via WiFi Smartlink ;
Make sure the device and mobile are in the same local area network

2.Q: Why the device is offline ?

A: Please check

- If device has been connected to Internet
- If Router working fine
- If DHCP server of Router turned on or not

3.Q: Why unable to find video recording ?

A: Please check

- If SD Card is broken
- If searching period is valid
- If device system time is correct

4.Q: Why camera can not be connected to a different local area network ?

A: Please reset the camera(from reset hole or button on camera),
then retry via WiFi Smartlink.

FCC Warning Statement

Changes or modifications not expressly approved by the party responsible for compliance could void the user's authority to operate the equipment. This equipment has been tested and found to comply with the limits for a Class B digital device, pursuant to Part 15 of the FCC Rules. These limits are designed to provide reasonable protection against harmful interference in a residential installation. This equipment generates uses and can radiate radio frequency energy and, if not installed and used in accordance with the instructions, may cause harmful interference to radio communications. However, there is no guarantee that interference will not occur in a particular installation. If this equipment does cause harmful interference to radio or television reception, which can be determined by turning the equipment off and on, the user is encouraged to try to correct the interference by one or more of the following measures:

- Reorient or relocate the receiving antenna.
- Increase the separation between the equipment and receiver.
- Connect the equipment into an outlet on a circuit different from that to which the receiver is connected.
- Consult the dealer or an experienced radio/TV technician for help.

FCC Radiation Exposure Statement

The antennas used for this transmitter must be installed to provide a separation distance of at least 20 cm from all persons and must not be co-located for operating in conjunction with any other antenna or transmitter.