

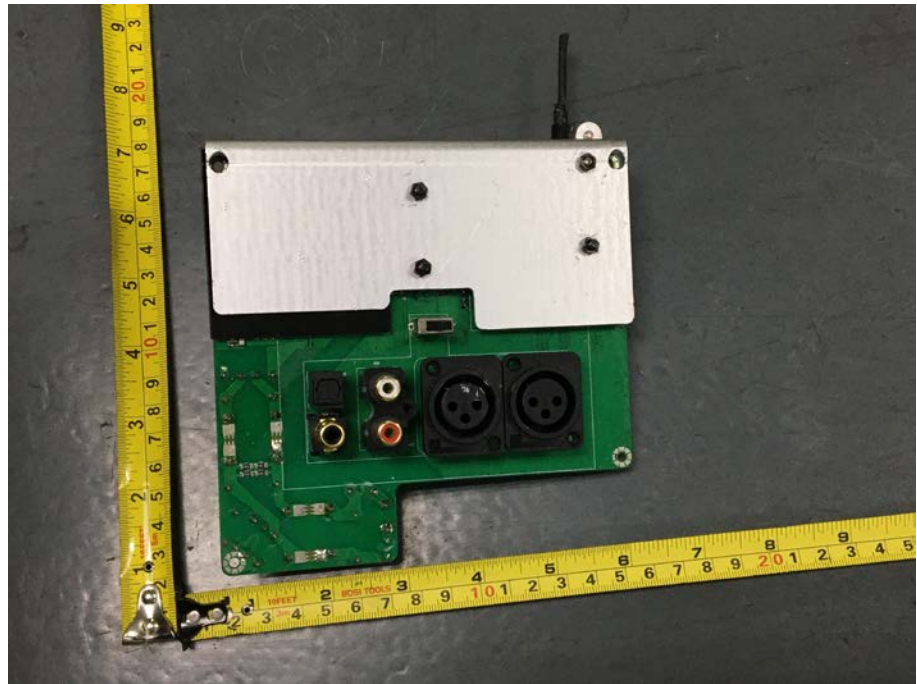


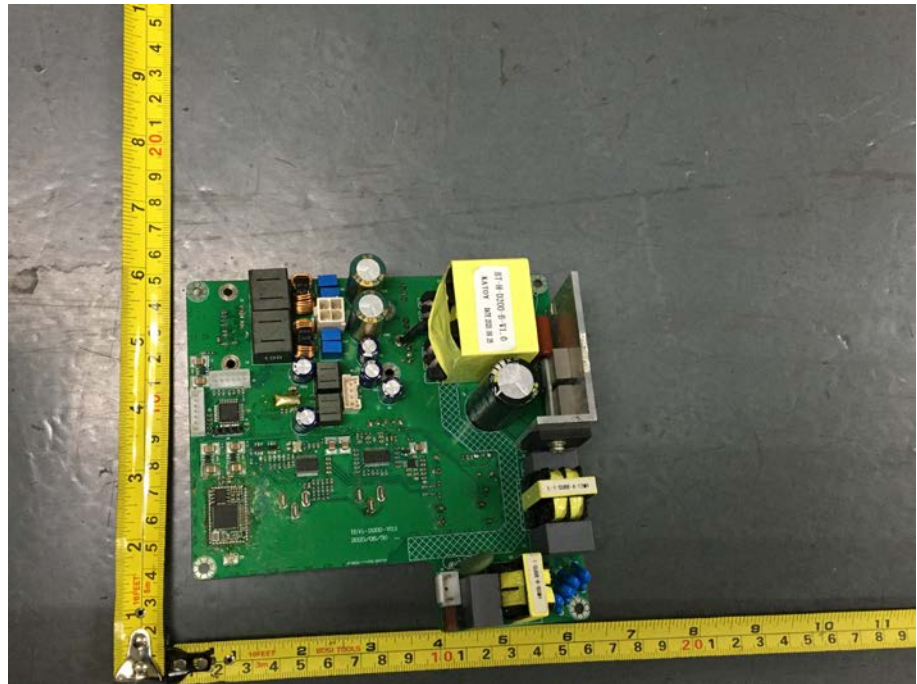
EXHIBIT 3 - EUT INTERNAL PHOTOGRAPHS

<p>EUT Housing and Board View 1</p>	 A photograph showing the internal components of an EUT housed in a wooden enclosure. The green PCB is populated with various electronic components, including a large yellow electrolytic capacitor, a black cylindrical component, and several integrated circuits. A yellow measuring tape is placed vertically and horizontally to provide scale for the device.
<p>Solder Board-Component View 1</p>	 A close-up photograph of the green PCB components, showing the solder joints and various electronic parts. A yellow measuring tape is placed vertically and horizontally to provide scale for the board components.

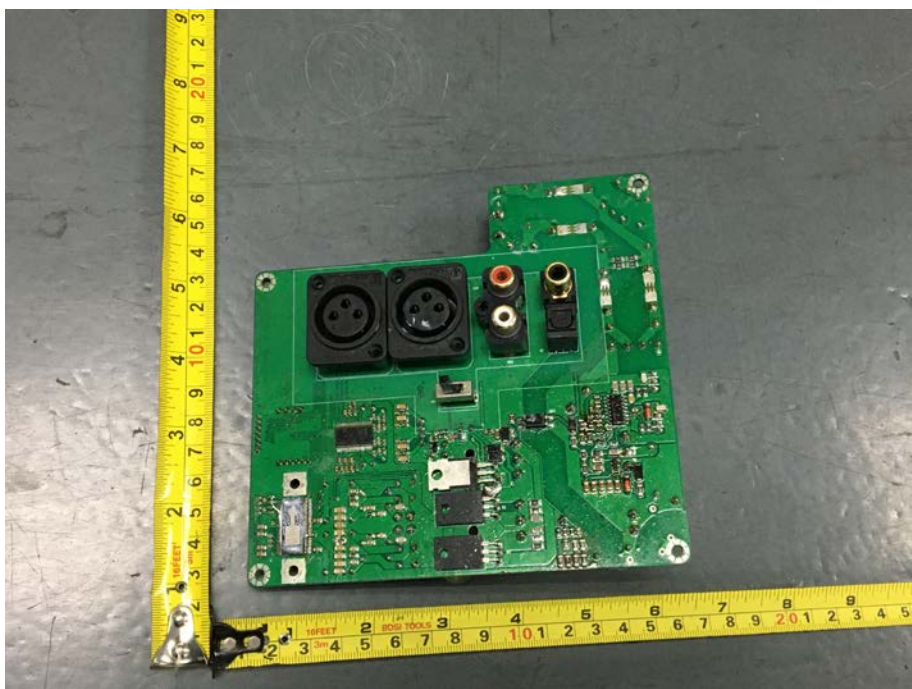
**Solder
Board-Component View
2**



**Solder
Board-Component View
3**



**Solder
Board-Component View
4**



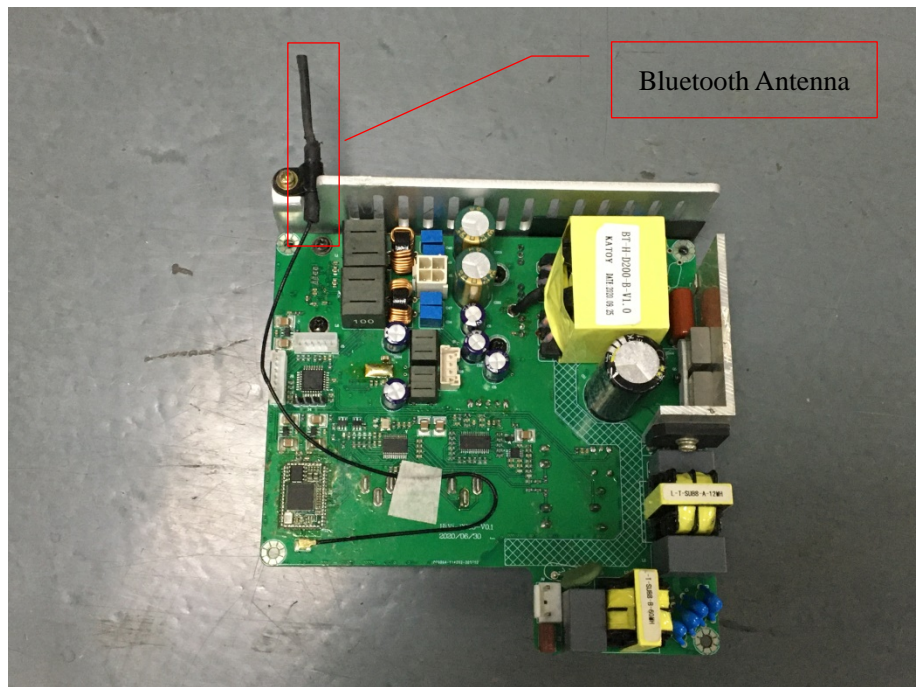
**Solder
Board-Component View
5**

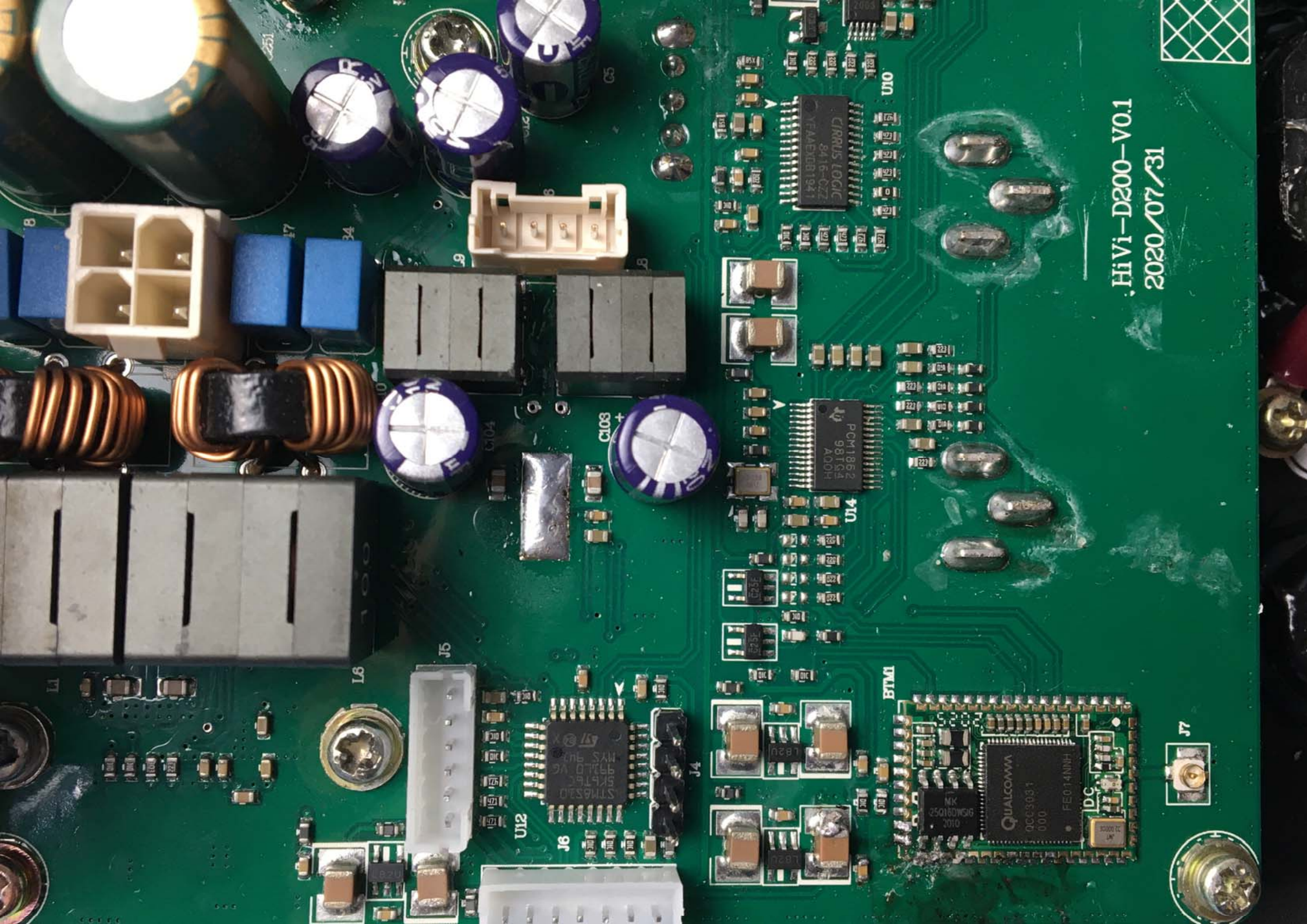


**Solder
Board-Component View
6**



Antenna View





HiVi-D200-V0.1
2020/07/31

BTM1

QUALCOMM
QCC3031
000
FE014NNH
DC
2C 0000
LM

MK
25018DWG6
2010

U4

PCM11862
981LS2
A00H

U10

CIRRUS LOGIC
8416-CZ2
YFAED081941

U12

STM320
5K176C
5K176D
MYS 5M1
MYS 5M1
MYS 5M1

C103 +

U104

J6

J4

J7