

# SmartMirror R1\_FRED

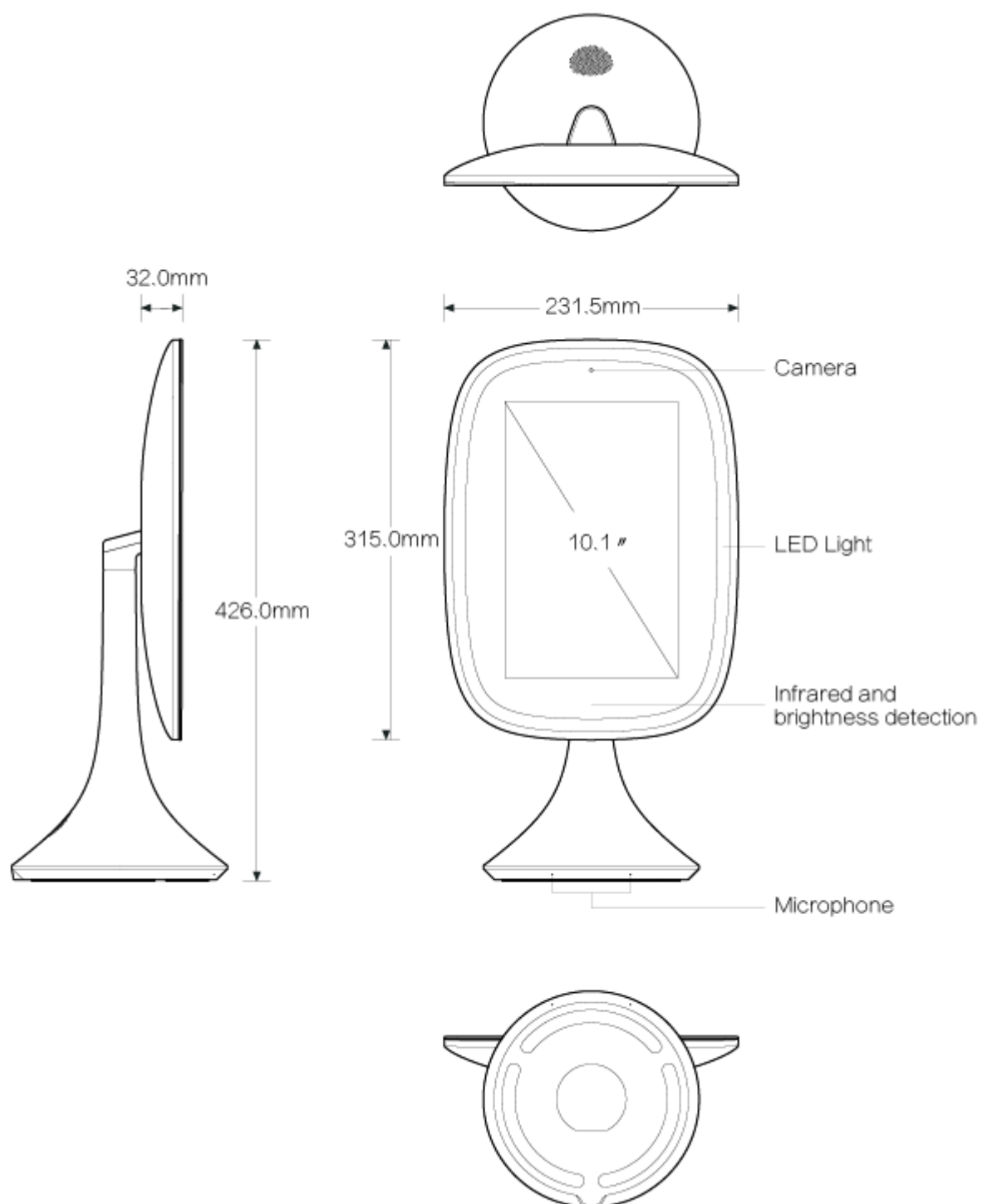
## User's Guide

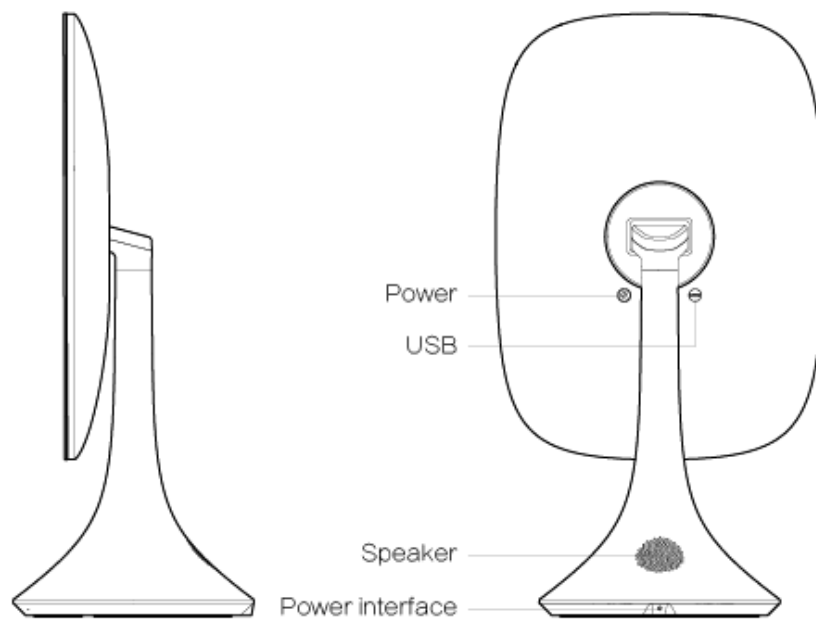


## **Table of Contents**

1. Product dimensions
2. Machine Accessories
3. Boot wizard
4. Function introduction
5. Set centerSet center
6. Notice

## 1.Product dimensions





## 2.Machine Accessories

2.1.Power Adapter\*1

2.2.User's Guide\*1

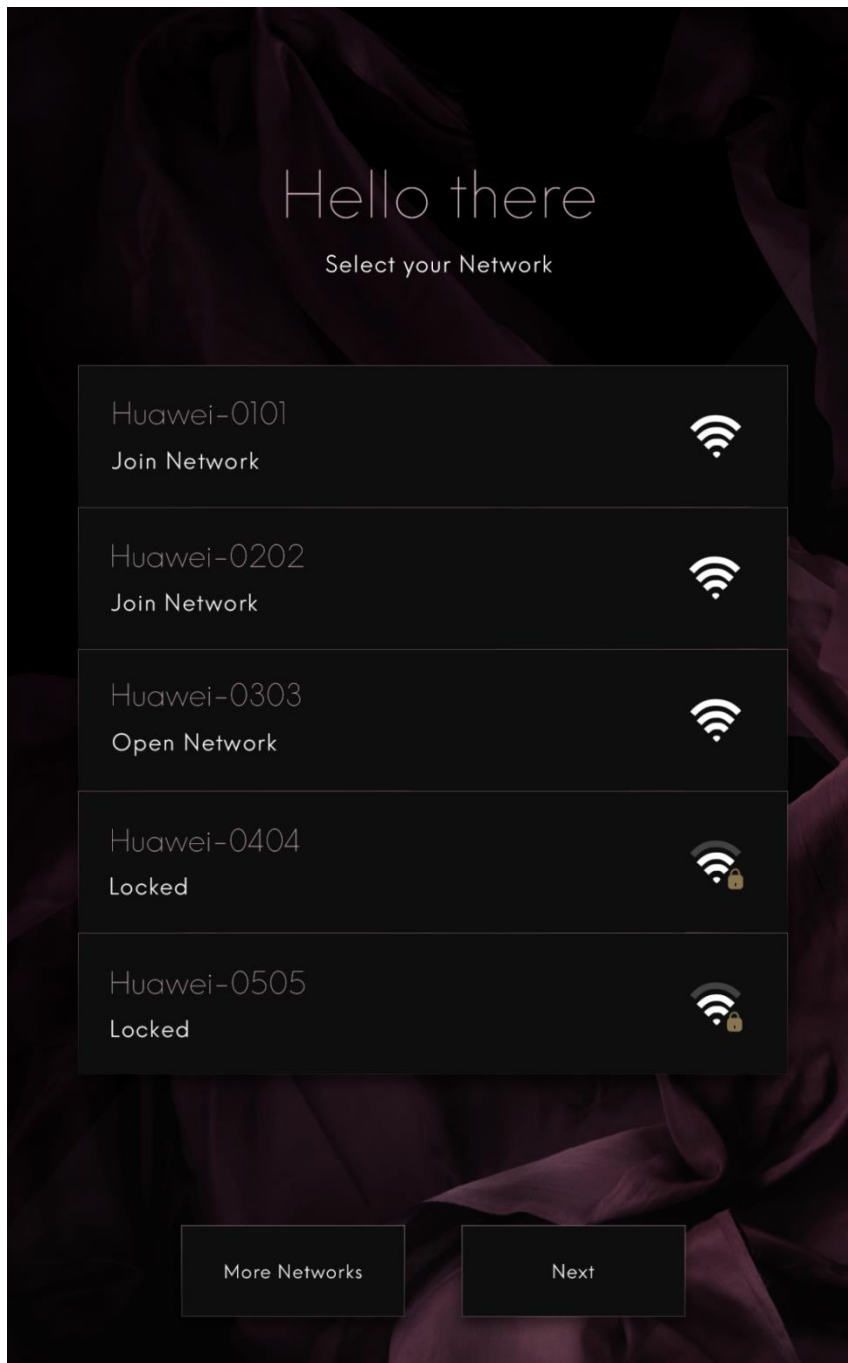
2.3.Warranty card\*1

2.4.Certificate\*1

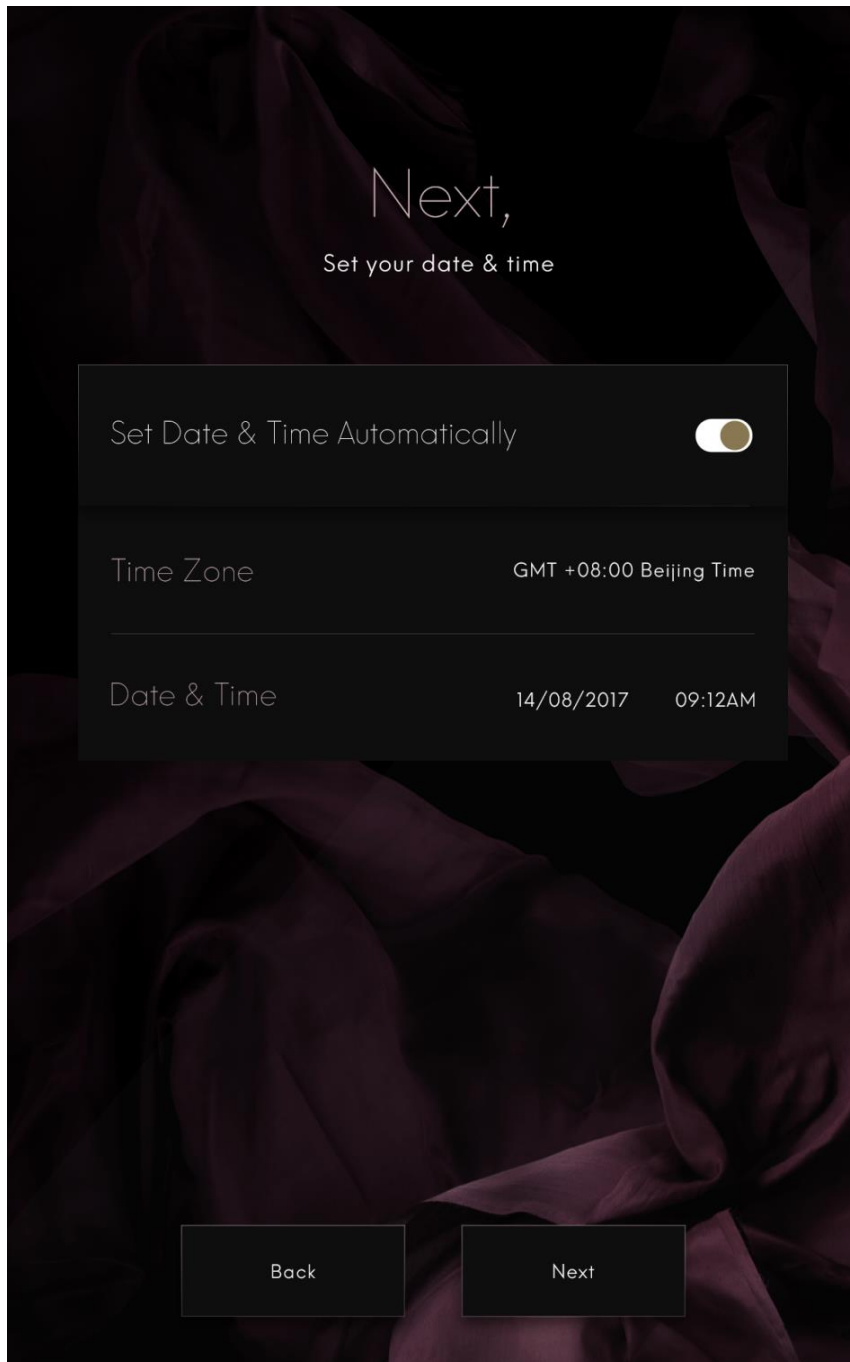
2.5.Cleaning cloth\*1

### 3.Boot wizard

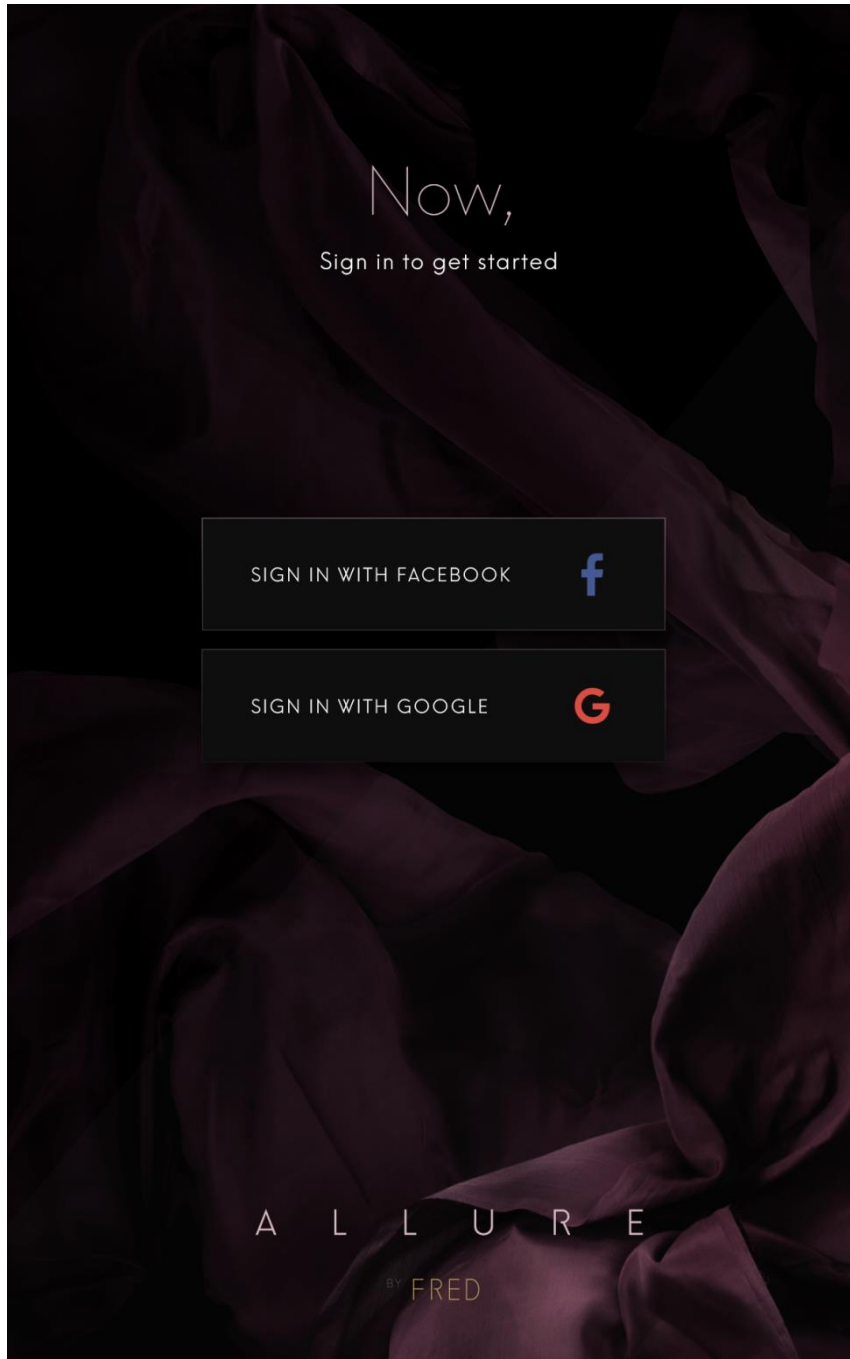
3.1.Long press the back of the magic mirror key for 3 seconds to boot / shutdown, boot the first time to use the need to connect WiFi.



### 3.2.Set the time zone and time.

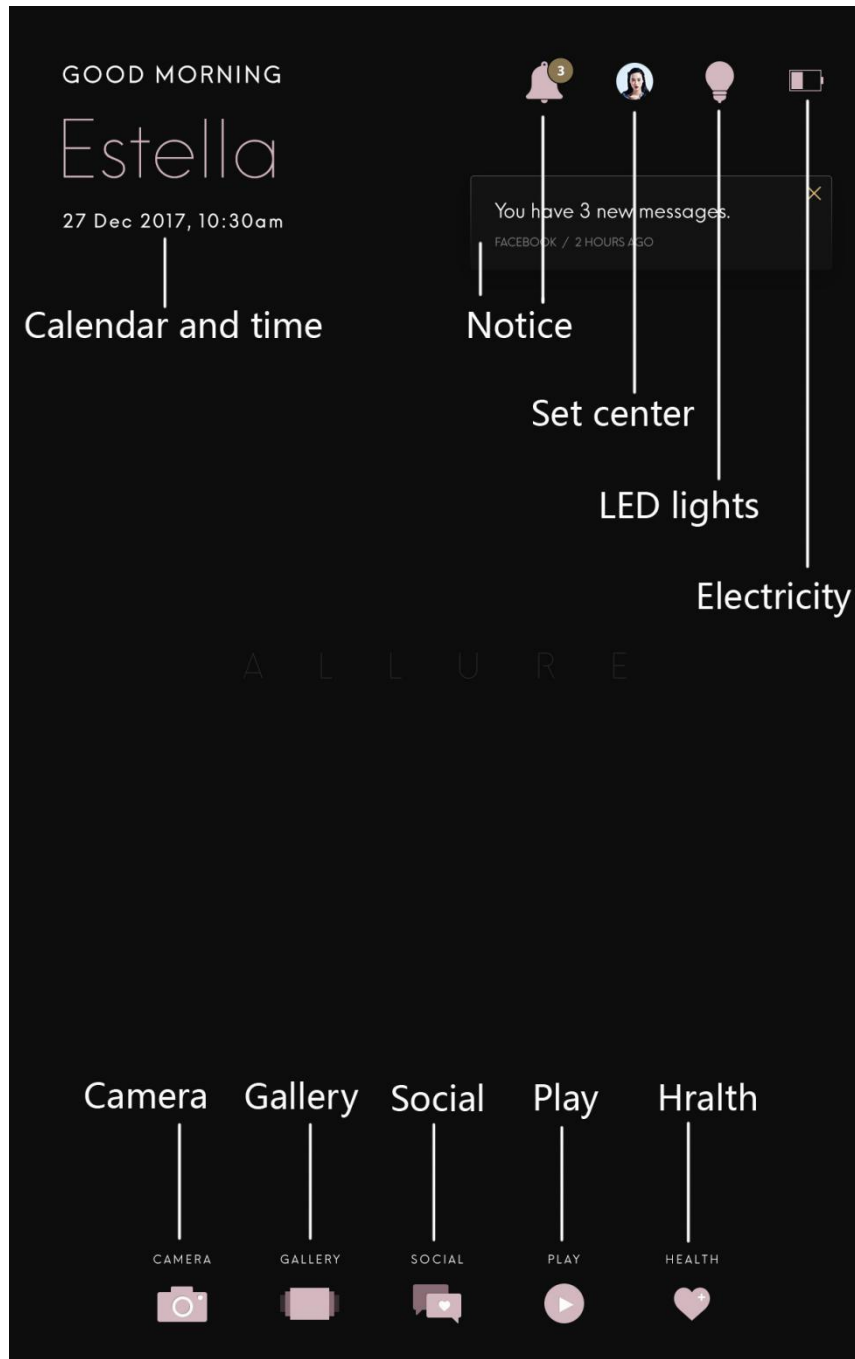


3.3. Select Facebook / Google Account to sign in.



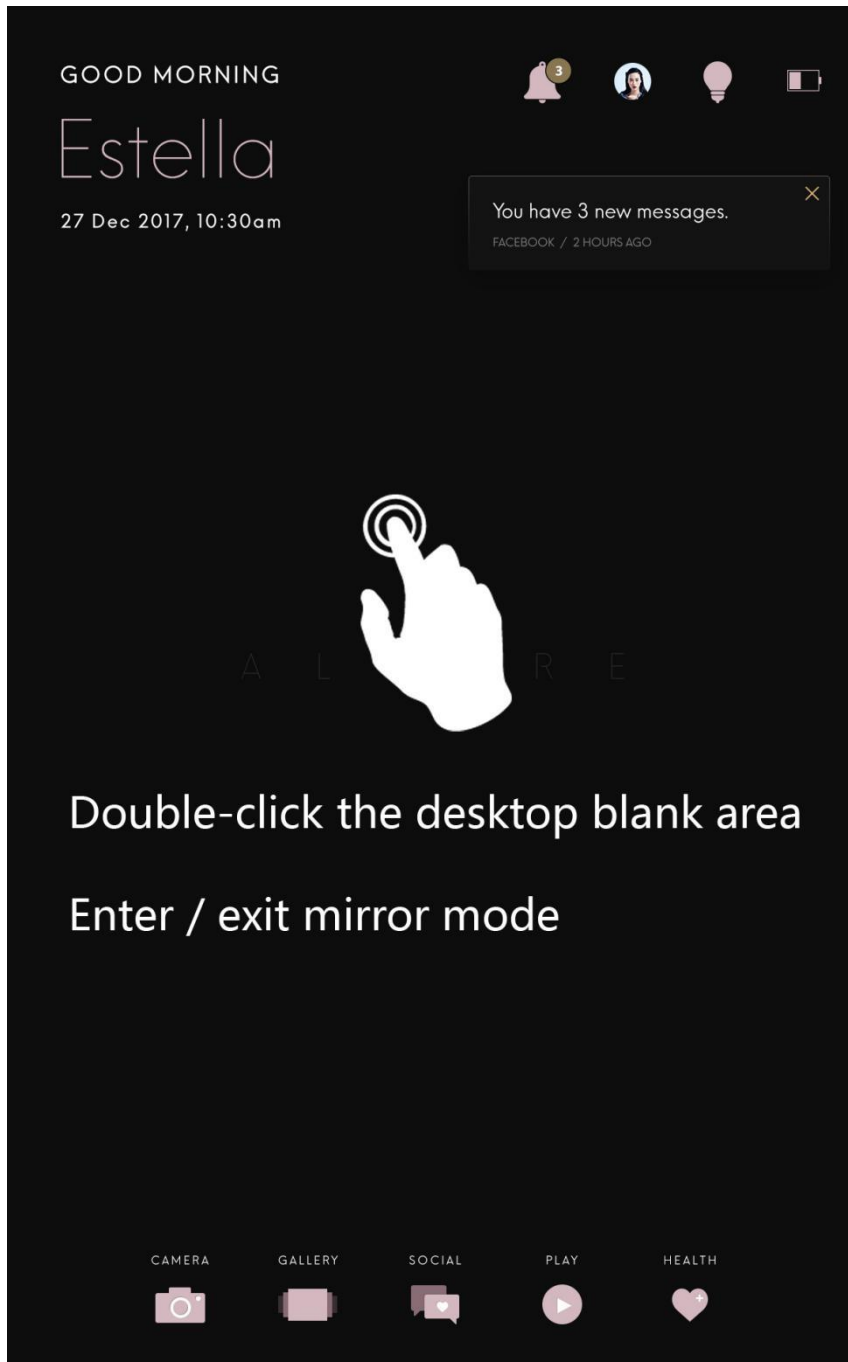
## 4.Function introduction

### 4.1.Introduction to the desktop

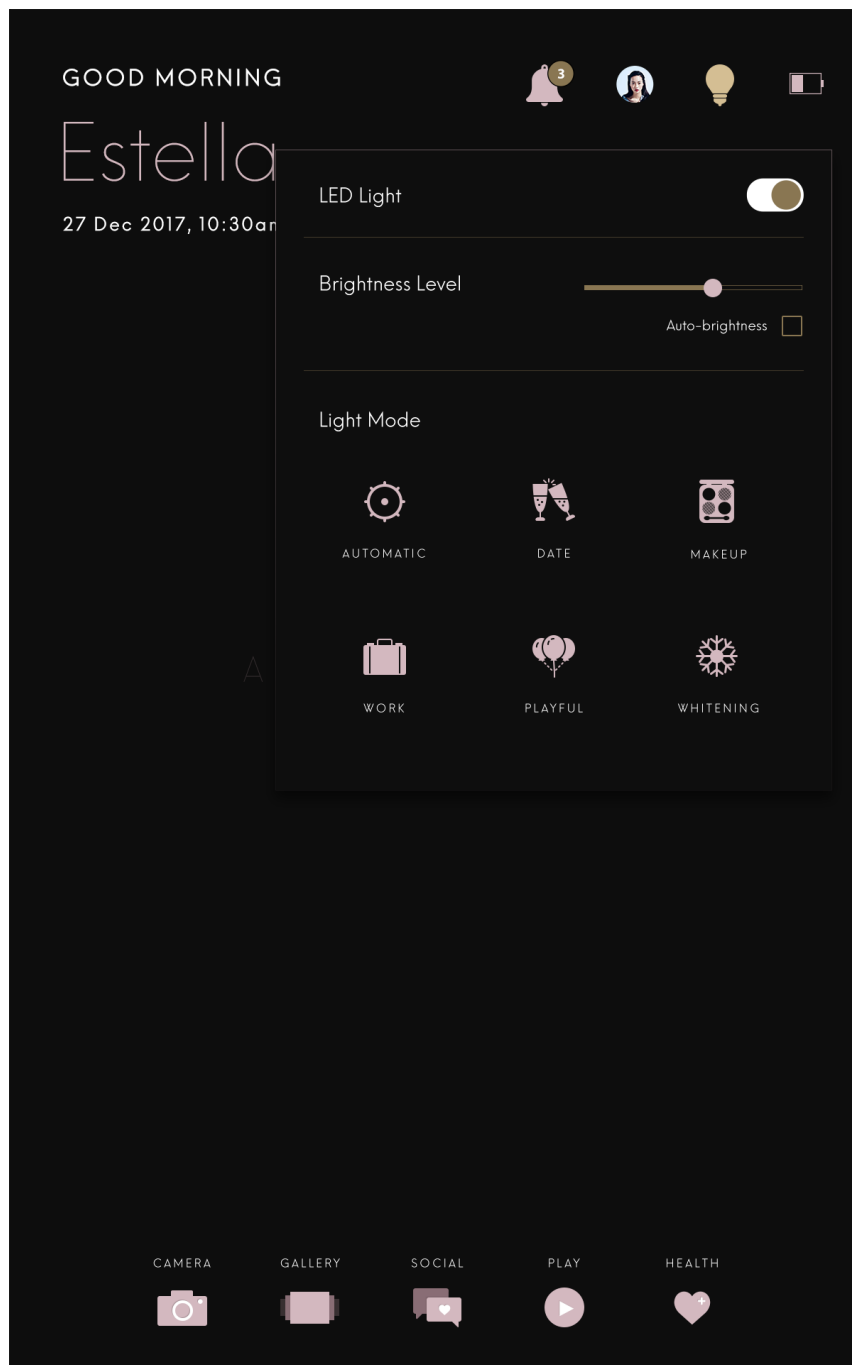




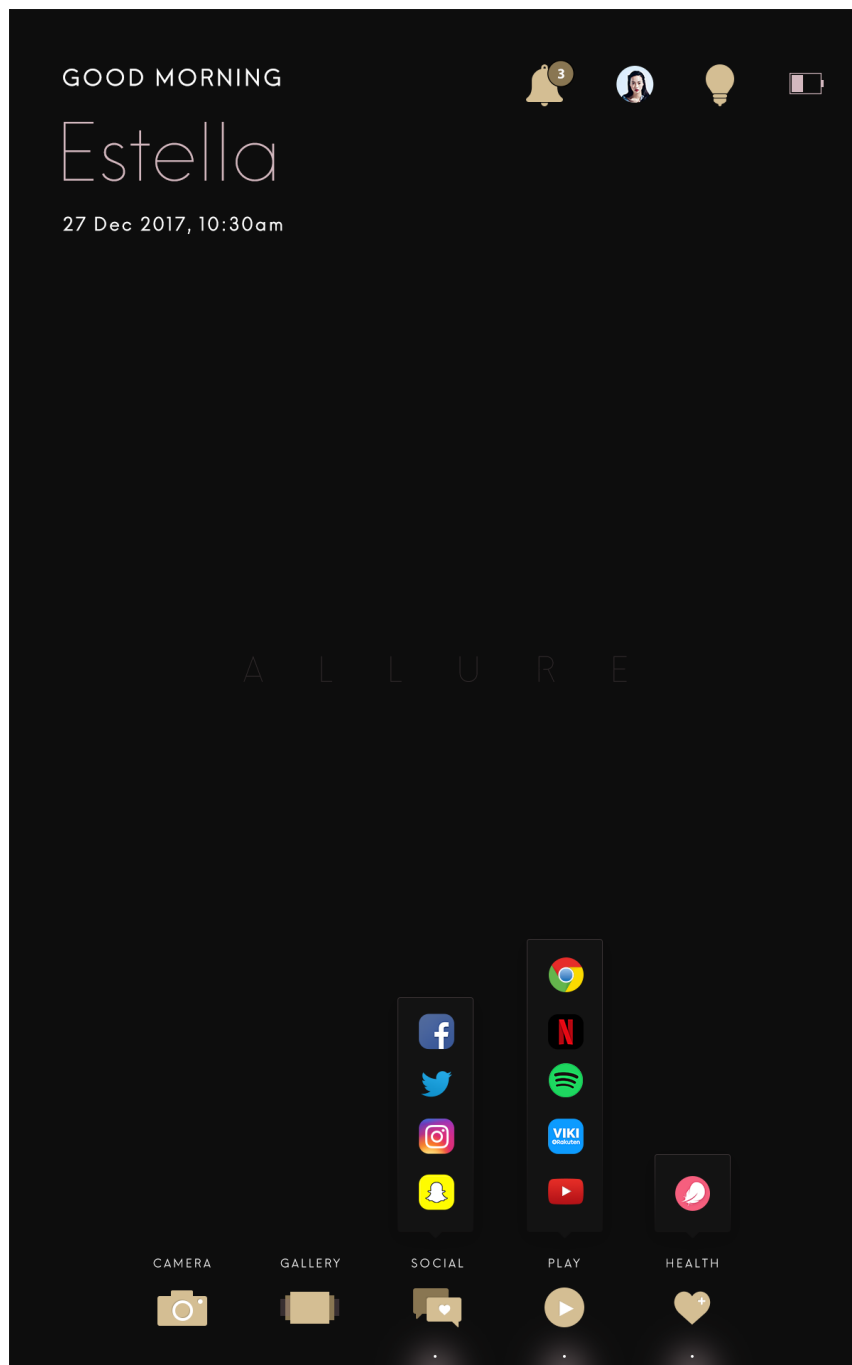
4.2.Mirror mode: Double-click the desktop blank area to switch to mirror mode.



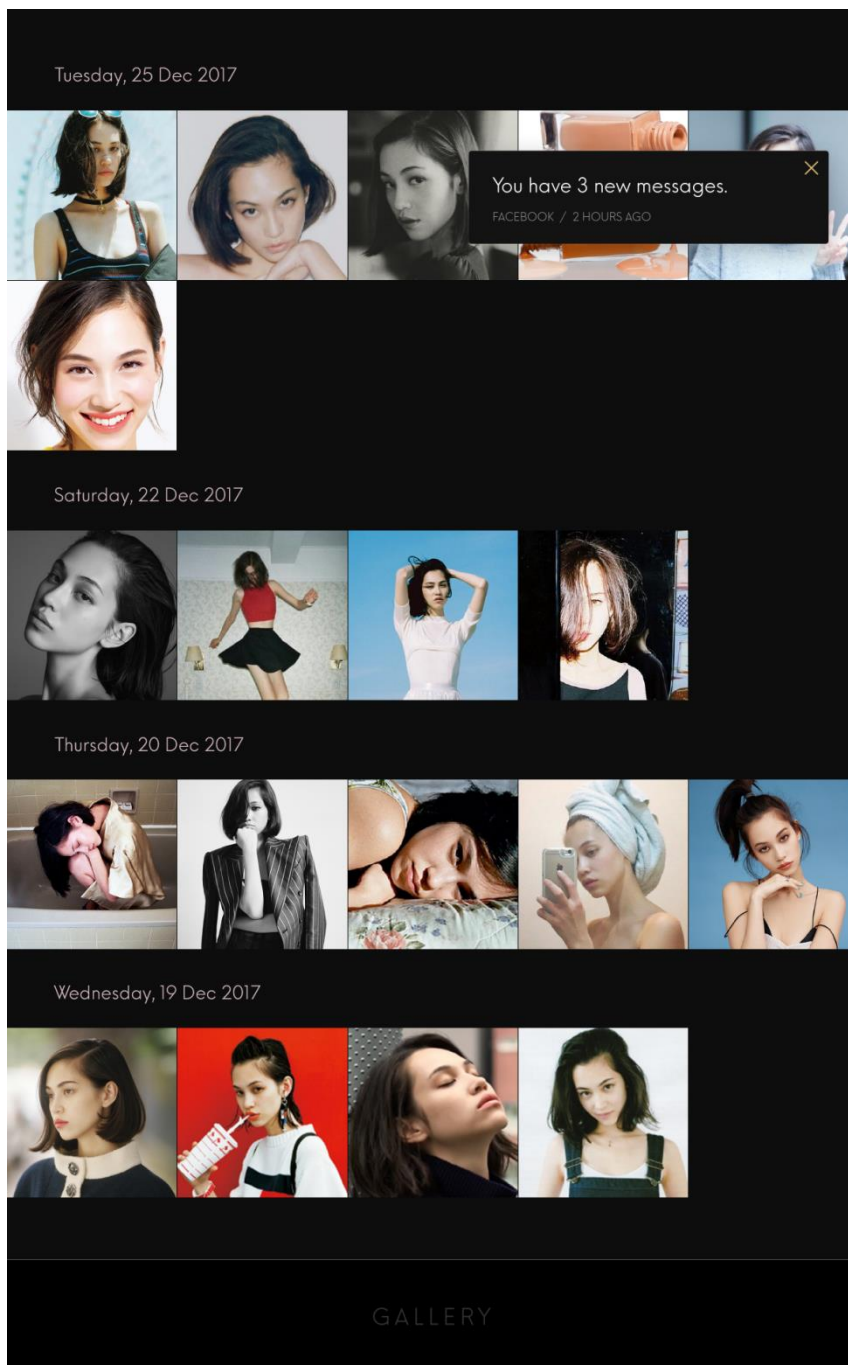
### 4.3.Lighting control



#### 4.4.Application Center



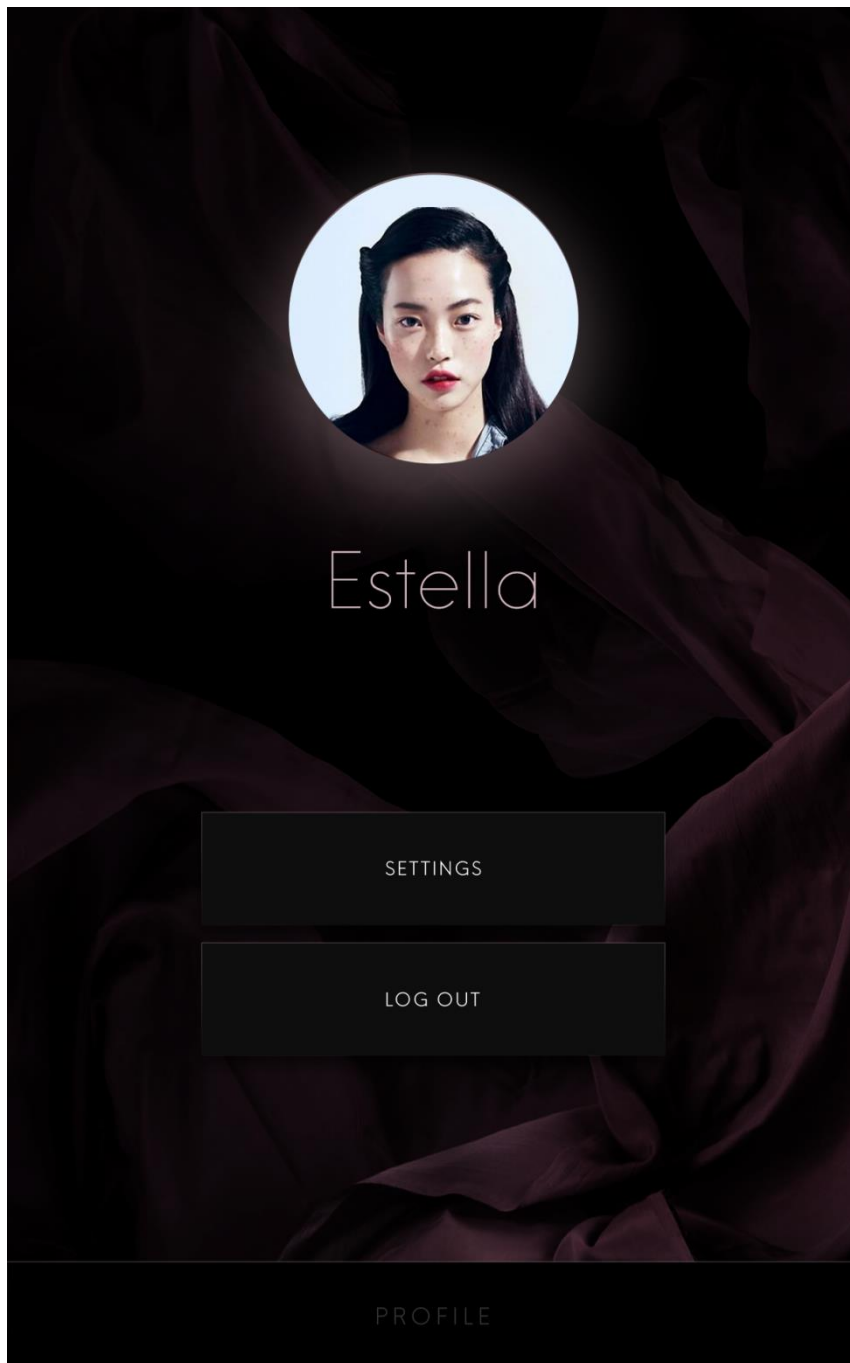
## 4.5.Gallery



## 5.Set centerSet center

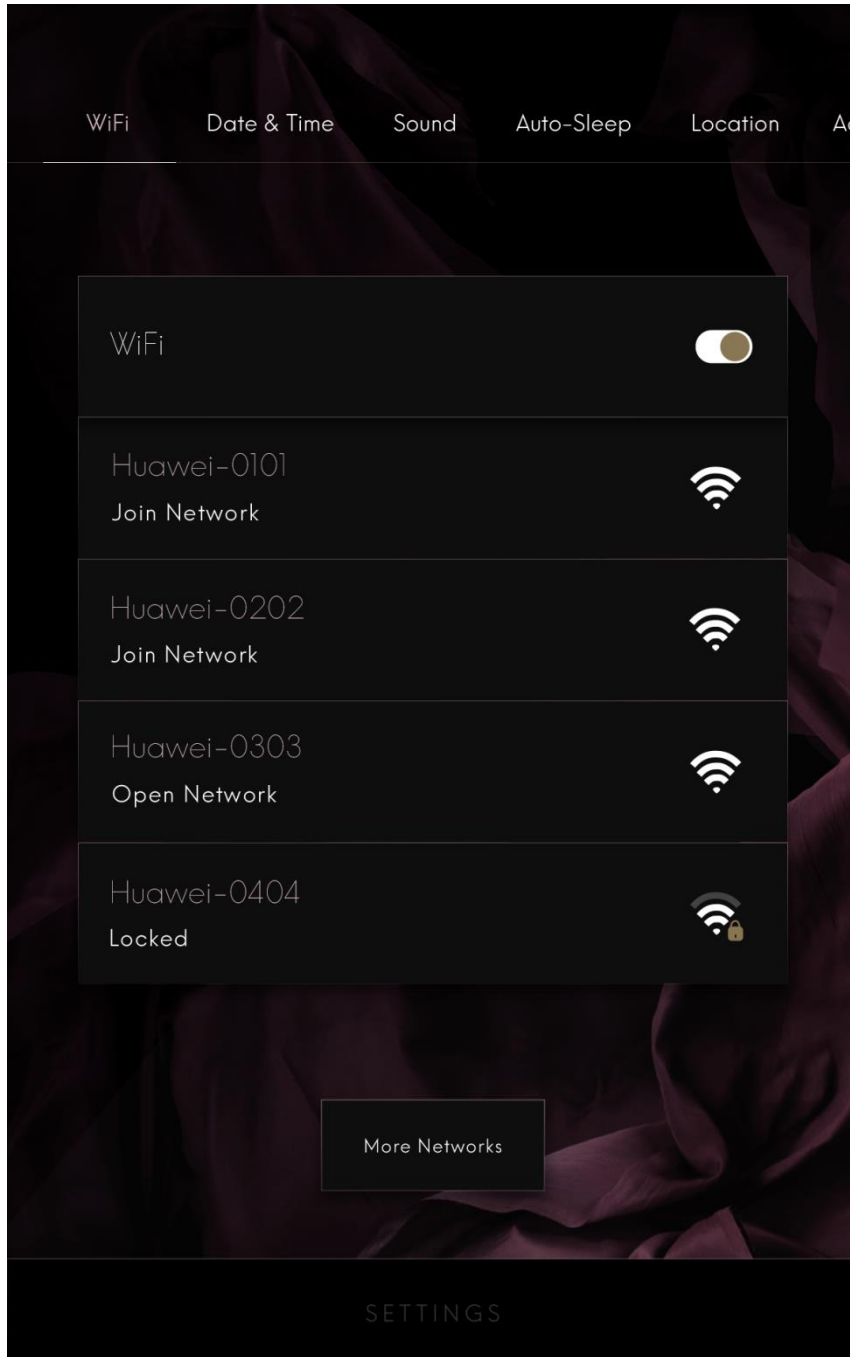
### 5.1.Account settings

- 1 ) You can change the user's picture and name.
- 2 ) Go to settings.
- 3 ) Log out.



## 5.2.System settings

### 1 ) WiFi、Date&Time、 Sound、 Auto-Sleep、 Advanced



## 6.Notice

This equipment has been tested and found to comply with the limits for a Class B digital device, pursuant to Part 15 of the FCC Rules. These limits are designed to provide reasonable protection against harmful interference in a residential installation. This equipment generates, uses and can radiate radio frequency energy and, if not installed and used in accordance with the instructions, may cause harmful interference to radio communications. However, there is no guarantee that interference will not occur in a particular installation.

If this equipment does cause harmful interference to radio or television reception, which can be determined by turning the equipment off and on, the user is encouraged to try to correct the interference by one or more of the following measures:

- Reorient or relocate the receiving antenna.
- Increase the separation between the equipment and receiver.
- Connect the equipment into an outlet on a circuit different from that to which the receiver is connected.
- Consult the dealer or an experienced radio/TV technician for help.

### FCC Caution:

This device complies with Part 15 of the FCC Rules. Operation is subject to the following two conditions: (1) This device may not cause harmful interference, and (2) this device must accept any interference received, including interference that may cause undesired operation.

### Non-modification Statement:

Changes or modifications not expressly approved by the party responsible for compliance could

void the user's authority to operate the equipment.

FCC Radiation Exposure Statement:

This equipment complies with FCC radiation exposure limits set forth for an uncontrolled environment. This equipment should be installed and operated with minimum distance 20cm between the radiator & your body.

RF Exposure: A distance of 20 cm shall be maintained between the antenna and users, and the transmitter module may not be co-located with any other transmitter or antenna.

**End**