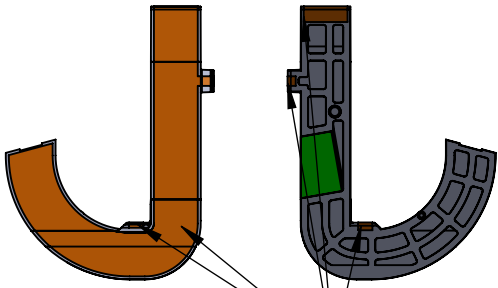


- NOTES:**
- 1. CRITICAL TO FUNCTION DIMENSIONS ONLY.
  - 2. FOR ALL OTHER DIMENSIONS, SEE FILE: **42-10069 - REV A - BLE ANTENNA, LDS, N.STEP**
  - 3. ALL DIMENSIONS FROM CAD SHOULD BE  $\pm 0.1$  OR BETTER UNLESS OTHERWISE STATED IN DRAWING.
  - 4. MATERIAL: **TICONA E840i (LCP, 40% MINERAL FILL).**
  - 5. MATERIAL SUBSTITUTION PERMITTED WITH WRITTEN APPROVAL.
  - 6. EJECTOR PIN MARKS TO BE FLUSH  $\pm 0.03$  TO SURROUNDING SURFACE.
  - 7. UNLESS OTHERWISE SPECIFIED AND/OR ON A PARTING LINE, ALL SHARP EDGES AND CORNERS TO BE R0.05.
  - 8. USE VDI-21 TEXTURE ON ALL SURFACES WHERE LDS METAL IS TO BE APPLIED.
  - 9. UNLESS OTHERWISE SPECIFIED, SURFACE FINISH OF ALL PART SURFACES TO BE SPI-B2 OR BETTER.
  - 10. PARTING AND/OR WITNESS LINE MISMATCH NOT TO EXCEED 0.05.
  - 11. STANDING FLASH NOT TO EXCEED 0.05 IN ANY DIMENSION.
  - 12. MOLDED PART TO BE FREE OF MOLD RELEASE OR OTHER SURFACE CONTAMINENTS.

REVISIONS TABLE			
REV.	DESCRIPTION OF CHANGES	DATE	CHANGED BY
01	INITIAL RELEASE	07/19/2016	A. LAURSEN
A	UPDATE MATERIAL, PLATING NOTES AND DWG FORMAT	04/24/2017	A. LAURSEN

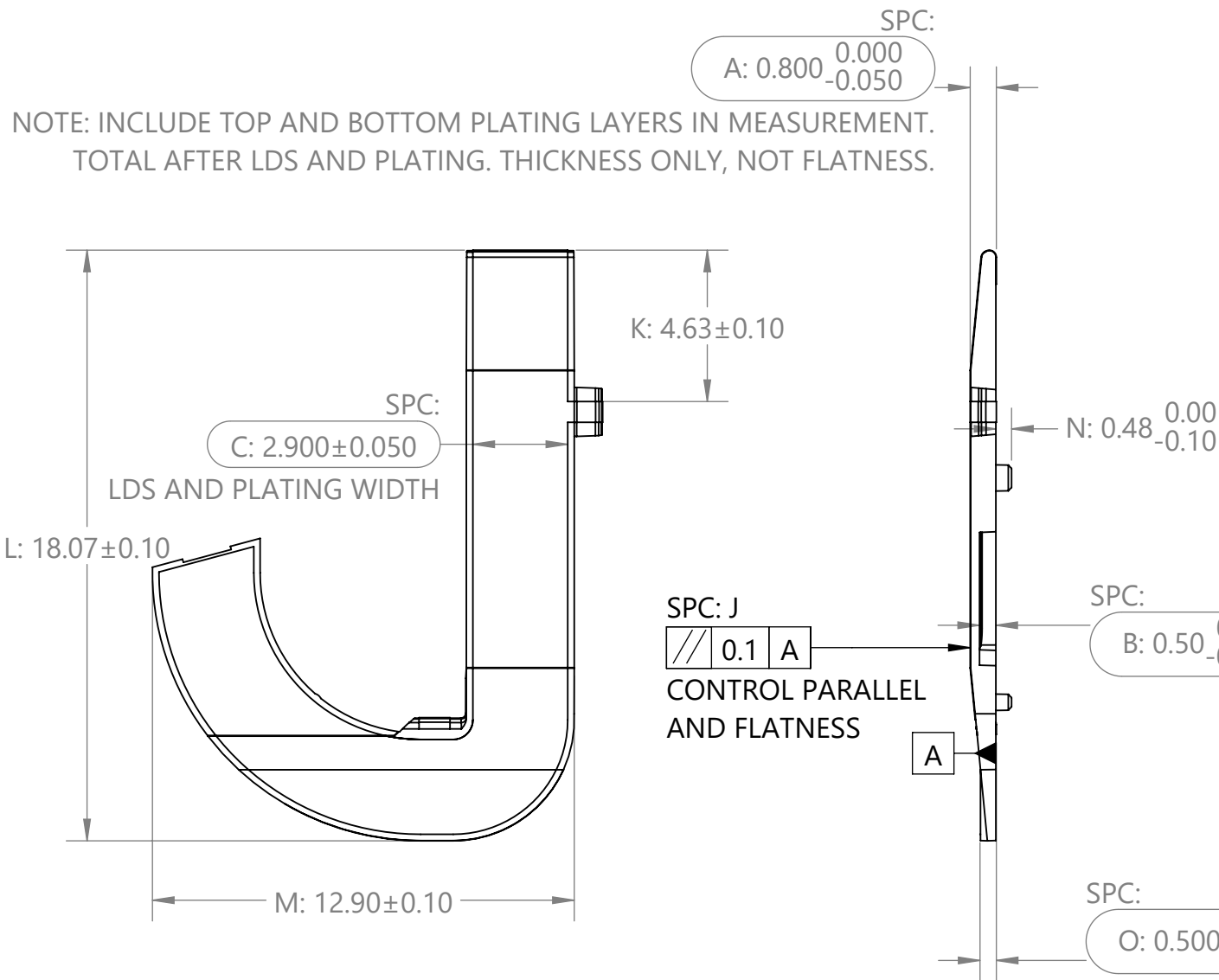
METAL PLATING ACCEPTABLE THICKNESSES	
COPPER	10-18 $\mu$ m
NICKEL	2-5 $\mu$ m
GOLD	$\geq 0.05\mu$ m
NOMINAL TOTAL	15 $\mu$ m

LDS METAL LOCATION



ORANGE SURFACES SHOW WHERE TO APPLY LDS METAL TEXTURE: VDI-21

NOTE: INCLUDE TOP AND BOTTOM PLATING LAYERS IN MEASUREMENT. TOTAL AFTER LDS AND PLATING. THICKNESS ONLY, NOT FLATNESS.

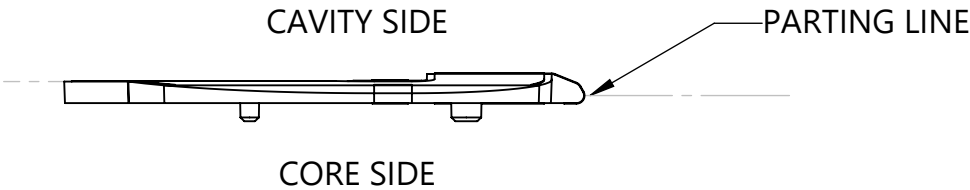


NOTE: INCLUDE TOP AND BOTTOM PLATING LAYERS IN MEASUREMENT. TOTAL AFTER LDS AND PLATING. THICKNESS ONLY, NOT FLATNESS.

PUT EDGE GATE HERE

NOTE: POSITION AND SIZE OF POSTS IS CRITICAL TO PROPER ALIGNMENT OF ANTENNA ON PCBA.

EJECTOR PINS OK ON BOTTOM SURFACE EXCEPT IN AREAS WHERE LDS METAL IS APPLIED.



PROPERTY OF **Nytec** 416 6TH ST. SOUTH KIRKLAND, WA 98033 WWW.NYTEC.COM

UNLESS OTHERWISE SPECIFIED:  
UNITS: MM  
ANGLE TOLERANCE:  $\pm 1.0^\circ$   
.X =  $\pm 0.25$  .XX =  $\pm 0.1$  .XXX =  $\pm 0.05$

THIRD ANGLE PROJECTION:

TITLE **BLE ANTENNA, LDS, N**

PART NO. **42-10069** REV. **A**

DRAWN BY A. LAURSEN SHEET SCALE 5:1 SHEET 1 OF 1