

尺寸：69X154.5mm
材质：80G哑粉纸（封面封底过哑油）
注明：（此版本含墨西哥）
形式：骑马钉

69mm ± 1.5

154.5mm ± 1.5

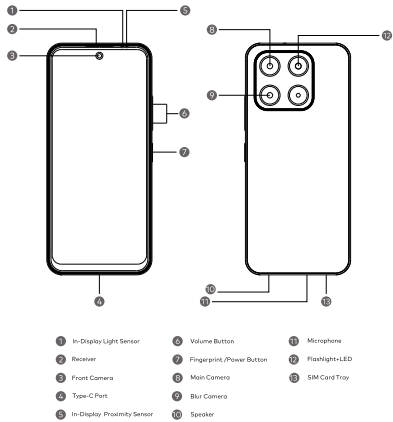
Quick start guide

M511H

This guide will introduce you to the mobile and its essential features.
Please visit Meizu's official website for more information.

MEIZU

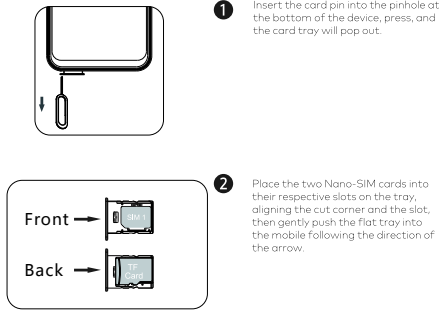
Mobile Appearance



Important Notifications

1. Power Button Instructions:
- After powering on, press and hold the power button for 0.5s to activate the Voice Assistant;
 - For initial startup, press and hold the power button for 5s. After powering on, press and hold the power button for 3s to access the power off/restart interface;
 - If the mobile phone is acting abnormally, please press and hold the power button continuously. This will force the phone to power off and then restart.
2. The rear cover and battery are non-removable. Please do not attempt to remove them yourself. If you need a replacement, please contact MEIZU after-sales service or your authorised local MEIZU representative.

SIM Card Installation (SIM card supports 2G/3G/4G)



- Switch between primary/accessory SIM cards in Settings when using dual SIM cards;
- Please use a standard Nano-SIM (contact your operator for a standard card). Cut or non-standard Nano-SIM cards may result in the device's malfunctioning;
- Damage to the device due to the use of non-standard Nano-SIM cards, incorrect installation, or incorrect SIM card tray installation will cause the warranty to become void.

Specifications

| | | |
|-----------------------|---|--|
| Product model | M511H | |
| Main screen parameter | 6.79" | |
| Dimension | 170.75mm*77.5mm*8.9mm | |
| Battery | 5000mAh/19.2Wh(Min) 5070mAh/19.46Wh(Typ) | |
| Camera | 13 Megapixels +0.08 Megapixels Rear 5 Megapixels Front | |
| Operating temperature | 0°C-35°C | |
| SAR Values | CE SAR | Head (10 g): 0.533 W/kg Body (10 g): 1.370 W/kg |

Note: The above SAR values are the highest values reported by this device.

Radio Waves Specifications

| Radio | Frequency | Max Output Power |
|------------|---|------------------|
| GSM | 850MHz | 35dBm |
| | 900MHz | 35dBm |
| | 1800MHz | 32dBm |
| | 1900MHz | 32dBm |
| WCDMA | Bands 1 | 25dBm |
| | Bands 2 | 25dBm |
| | Bands 4 | 25dBm |
| | Bands 5 | 25dBm |
| | Bands 8 | 25dBm |
| LTE FDD | Bands 1/2/4/7/66 | 25dBm |
| | Bands 3/5/8/12/17/18/19/20/26/28/2/4/7/66 | 25dBm |
| LTE TDD | Bands B38/41 | 25dBm |
| | Bands 40 | 25dBm |
| Bluetooth | 2.400GHz-2.4835GHz | 9dBm(EIRP) |
| 2.4G Wi-Fi | 2.400GHz-2.4835GHz | 18dBm(EIRP) |

The power delivered by the charger must be between min [2.5] Watts required by the radio equipment, and max [10]Watts in order to achieve the maximum charging speed.



Manufacturer: MEIZU TECHNOLOGY CO., LTD.
Address: MEIZU Tech Bldg, Technology & Innovation Coast,
Zhuhai, 519085, Guangdong, China
Website: <https://www.DreamSmart.com>

Designed by MEIZU Made in China

