

HI THERE!

I'm the Runtopia Running Genie!

To get started, please enable Bluetooth and network settings and follow the steps ahead to get me connected!

ITEMS INCLUDED



1× Runtopia Running Genie Chip



1× User Manual



1× Lithium Battery

GETTING STARTED

STEP 01 Download the Runtopia app

Search for “Runtopia” on Google Play or the App Store. You can alternatively scan the QR code below to download the app.



STEP 02 Register & Login

Open the Runtopia app, click on ‘register using phone number’ or register using Facebook or Google.

Facebook

Google

Register

Email

Phone

STEP 03 Awakening the Genie

When using the chip for the first time, it needs to be connected to the app. Go to the app's "Me" page, choose "My Device" and find the "Running Genie". Here, click to connect.

Me

My Device

Runtopia Running Genie

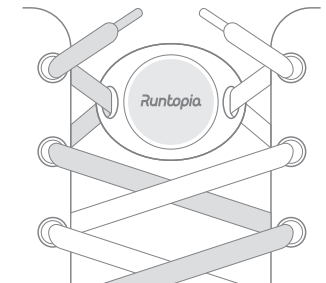
Gently shake the chip to activate it and use the app to scan the QR code on the back to connect.



STEP 04 Wearing the Running Genie

When using the Running Genie, it needs to be securely tied to your shoes' shoelaces. Please pay attention to securing the Running Genie accurately to ensure accurate data collection.

- Direction of Running Genie: The side with the logo visible, and the Runtopia logo pointing down
- The Running Genie needs to be securely fastened onto the shoelaces. Please refer to the image below.



STEP 05 Synchronizing Data

There are two ways to synchronize data: Automatic sync and manual sync

Automatic sync:

When the Runtopia app is open on the mobile phone, and the Running Genie is connected to the app, the data will be automatically synchronized, including previous unsynchronized data.

Manual sync:

Open the Runtopia app, in the device settings you can see the Running Genie has been connected. Enter the details page and lightly shake the Running Genie near your phone to activate it, and then click on the upper right hand corner ‘Sync’.

Note

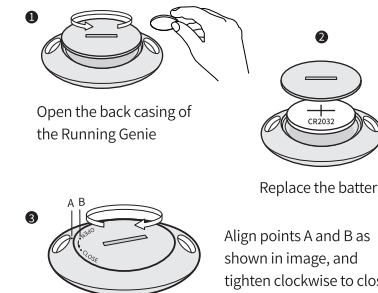
The Running Genie has internal data storage to enable storing motion data without a mobile phone (no GPS route). However, due to storage limitations, it is recommended to sync data every 1-2 days to avoid data loss.

- Please avoid pressing hard on the chip or using hard/sharp objects to hit the chip or casing to prevent damage;
- Please remove the chip when cleaning or washing shoes and avoid using corrosive chemical cleaners;
- Please avoid use in proximity to strong electromagnetic interference environments;
- It is recommended to sync data after each workout.



REPLACING BATTERY

The battery can be replaced as shown below.



The Running Genie uses a CR2032 coin cell battery.

The battery life of the chip is approximately 2 months, and the app will alert with battery information to remind replacing the battery.

When replacing the battery, the back cover of the chip can be opened using any thin hard tool any thin hard tool (e.g. a coin). When closing the back cover, ensure the front and back covers are securely fastened to ensure water resistance of the chip.

PARAMETERS

Genie material: PC
Genie size: 39*31*9.6mm
Water-proof level: IPX6
Weight: 8g
Battery: CR2032 battery
Working Temperature: -10°C ~45°C
Bluetooth: Version 4.0
Standby time: about 2 months
Support OS: Android 4.4 or above&IOS 9.0 or above

ARE YOU READY? TIME TO GET RUNNING!

For an efficient and safe run, remember to warm up properly pre-run, and cool down with stretching post-run.

Have questions about this product?
Check our website www.runtopia.net or contact us at hello@runtopia.net

Manufacturer:
Chengdu Ledong Information Technology Co., Ltd
Address: 13F, D-7, Tianfu Software Park, Gaoxin District, Chengdu, China
Website: www.runtopia.net
Made in China

RUNNING GENIE

USER GUIDE



Runtopia

FCC caution

Federal Communication Commission (FCC) Radiation Exposure Statement

When using the product, maintain a distance of 20cm from the body to ensure compliance with RF exposure requirements.

FCC statements:

This device complies with part 15 of the FCC rules. Operation is subject to the following two conditions:

- (1) this device may not cause harmful interference, and
- (2) this device must accept any interference received, including interference that may cause undesired operation.

NOTE: The manufacturer is not responsible for any radio or TV interference caused by unauthorized modifications or changes to this equipment. Such modifications or changes could void the user's authority to operate the equipment.

NOTE: This equipment has been tested and found to comply with the limits for a Class B digital device, pursuant to part 15 of the FCC Rules. These limits are designed to provide reasonable protection against harmful interference in a residential installation. This equipment generates uses and can radiate radio frequency energy and, if not installed and used in accordance with the instructions, may cause harmful interference to radio communications. However, there is no guarantee that interference will not occur in a particular installation. If this equipment does cause harmful interference to radio or television reception, which can be determined by turning the equipment off and on, the user is encouraged to try to correct the interference by one or more of the following measures:

- Reorient or relocate the receiving antenna.
- Increase the separation between the equipment and receiver.
- Connect the equipment into an outlet on a circuit different from that to which the receiver is connected.
- Consult the dealer or an experienced radio/TV technician for help.

Any changes or modifications not expressly approved by the party responsible for compliance could void the user's authority to operate this equipment.