

catit®

Pixi™

SMART MOUSE CAMERA

REGISTER ONLINE!
ENREGISTREMENT EN LIGNE!

USER MANUAL • GUIDE DE L'UTILISATEUR • GEBRAUCHSANLEITUNG • MANUAL DEL USUARIO • MANUAL DO USUÁRIO
GEBRUIKERSHANDLEIDING • INSTRUKCJA UŻYTKOWANIA • FELHASZNÁLÓI KÉZIKÖNYV • MANUALE UTENTE • BRUGERMANUAL
ИНСТРУКЦИЯ ПО ПРИМЕНЕНИЮ • ANVÄNDARHANDBOK • UŽIVATELSKÁ PŘÍRUČKA • MANUAL DE UTILIZARE

43758



MORE INFORMATION • EN SAVOIR PLUS • WEITERE INFORMATIONEN • MÁS INFORMACIÓN • SAIBA MAIS
MEER INFORMATIE • INFORMACJE DODATKOWE • TOVÁBBI INFORMÁCIÓK • MAGGIORI INFORMAZIONI • FLERE OPLYSNINGER
ДОПОЛНИТЕЛЬНАЯ ИНФОРМАЦИЯ • MER INFORMATION • VÍCE INFORMACÍ • MAI MULTE INFORMATII

CATIT.COM

EN SAFETY TIPS

INSTRUCTIONS PERTAINING TO A RISK OF FIRE, ELECTRIC SHOCK, OR INJURY TO PERSONS

IMPORTANT SAFETY INSTRUCTIONS

WARNING: To guard against injury, basic safety precautions should be observed, including the following:

1 READ AND FOLLOW ALL SAFETY INSTRUCTIONS

and all the important notices on the appliance before using the appliance. Failure to do so may result in damage to this appliance.

2 DANGER – To avoid possible electrical shock, special care should be taken. For each of the following situations, do not attempt repairs yourself; return the appliance to an authorized service facility for service if it is still under warranty or discard the appliance.

A If the appliance shows any sign of abnormal functioning, disconnect the power supply cord.

B Carefully examine the appliance after installation. It should not be plugged in if there is water on parts not intended to be wet.

C Do not operate the appliance if it has a damaged electrical cord, plug, or if it is malfunctioning or if it is dropped or damaged in any manner. If the supply cord is damaged, it must be replaced by the manufacturer, its service agent or similarly qualified persons in order to avoid a hazard. Never cut the cord.

D The electrical outlet should always be above the level of the appliance. If the plug or outlet does get wet, **DO NOT** unplug the electrical cord. Disconnect the fuse or circuit breaker that supplies power to the appliance, then unplug and examine for presence of water in the outlet.

E This appliance is not intended for use by persons (including children) with significantly impaired physical or mental capabilities, unless they have been given supervision or instruction concerning the use of the appliance by a person responsible for their safety. Children should always be supervised to ensure that they do not play with the appliance. Cleaning and user maintenance shall not be done by children without supervision.

F To avoid injury, do not contact moving or hot parts.

3 CAUTION Always unplug or disconnect the appliance from the outlet before putting on or taking off parts and

while the equipment is being installed, maintained or handled. Never yank the cord to pull the plug from outlet. Grasp the plug and pull to disconnect. Always unplug an appliance from an outlet when not in use. Never lift the appliance by the cord.

4 CAUTION:

THIS IS AN INDOOR CAMERA TO MONITOR PETS.

This appliance has been evaluated for indoor supervision of pets only. Do not use this appliance for other than its intended use. The use of attachments not recommended or sold by the appliance manufacturer may cause an unsafe condition.

7 Do not install or store the appliance where it will be exposed to humidity or temperatures below freezing. Shelter the appliance from direct sunlight. Do not place the device near a source of strong electromagnetic interference.

8 Ensure that the appliance or its metal mounting disc is placed on a flat, even surface. Monitor the appliance regularly. Make sure there is nothing obstructing or covering the device. When mounting the camera using the metal mounting disc, ensure the camera is positioned less than 2 meters above ground. **Ensure the anti-skid layer on the camera's feet is clean and free of dust and that the magnetic pull between the device and metal mounting disc is sufficiently strong to hold the camera in place.**

9 If an extension cord is necessary, ensure the connection is watertight and dust proof. A cord with a proper rating should be used. A cord rated for less amperes or watts than the appliance rating may overheat. **Care should be taken to arrange the cord so that it can not be tripped over or pulled.**

10 Do not use this unit outdoors. This unit is for indoor use only. The electrical adaptor is only to be used with the unit provided.

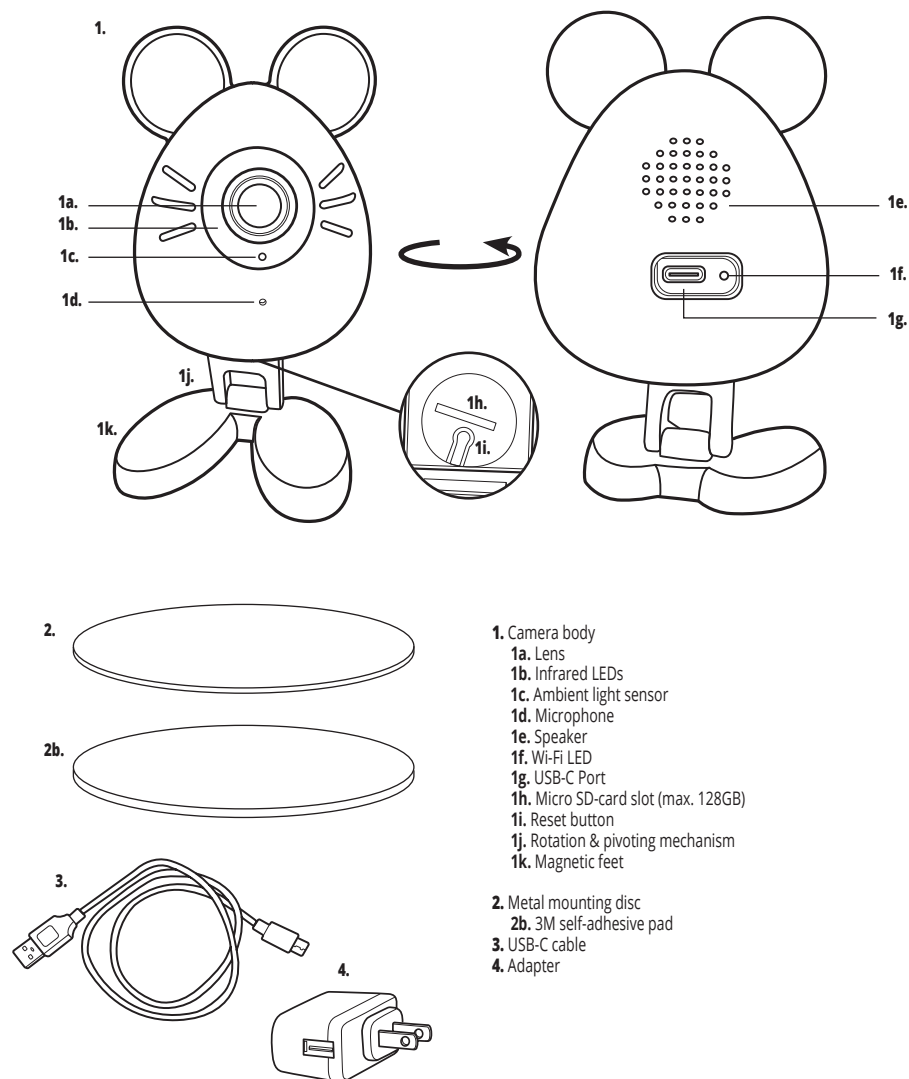
11 The device uses infrared technology to produce high-resolution images in low light conditions. When enabled in the mobile app, the device will automatically switch to night vision when normal lighting is insufficient to produce an image.

SAVE THESE INSTRUCTIONS FOR FUTURE REFERENCE.

Only the faithful observation of these installation, electrical and maintenance guidelines will ensure the safe and efficient use of this feeder.



RECYCLING: This product bears the selective sorting symbol for waste electrical and electronic equipment (WEEE). This means that this product must be handled pursuant to European Directive 2012/19/EU in order to be recycled or dismantled to minimize its impact on the environment. Check with your local Environmental Agency for possible disposal instructions or take to an official council registered refuse



EN All pictures shown in the manual are for illustration purposes only. Actual product may vary as a result of product enhancements.

USAGE / UTILISATION / VERWENDUNG / USO / UTILIZAÇÃO / GEBRUIK / UŻYTKOWANIE /
HASZNÁLAT / USO / ANVENDELSE / ИСПОЛЬЗОВАНИЕ / ANVÄNDNING / POUŽITÍ / UTILIZARE

EN The Catit® PIXI™ Smart Mouse Camera enables you to easily check in on your cat when you're away from home. This cute mouse-shaped device is equipped with 1080p HD camera with automatic infrared nightvision, built-in mic and speakers for two-way communication, as well as motion-detection, so you can rest assured not a moment will be missed.

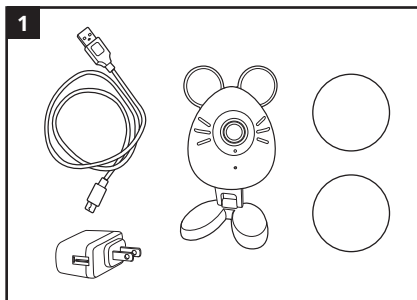
Using the **free Catit PIXI app**, you can watch, listen and talk to your cat through the camera, from anywhere, at any time of day. Watch and record live footage and save adorable photos and videos to your smartphone's camera roll. Insert a micro SD-card (max. 128GB, not included) to record either continuously or timed, or by motion-detection in the selected areas you want to monitor. You can also choose to receive push notifications triggered by motion-detection.

The camera is easily posable, can be stood up on its feet, rotated 360° horizontally and tilted to look all the way up and down. **The camera can be mounted using the metal mounting disc provided.**

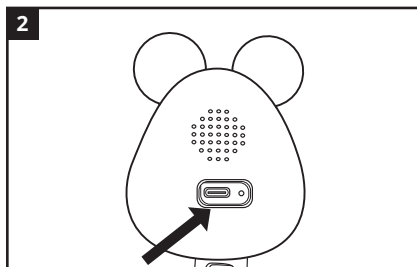
Pair the camera with other Catit® PIXI™ Smart devices to keep watching as you control them remotely in the mobile app, such as when serving your cat's meals using the Catit® PIXI™ Smart Feeder or starting up the Catit® PIXI™ Smart Fountain.

Data storage: The camera will save images and video recorded live in the app directly to your smartphone's camera roll. For automatic video recordings, an additional micro-SD card (max. 128GB storage, not included) must be inserted.

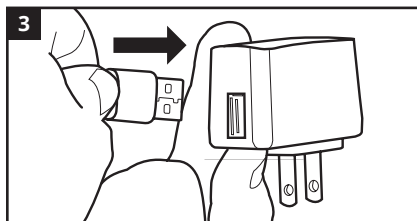
INSTALLATION / INSTALACIÓN / INSTALAÇÃO / MONTAGE / MONTAŽ / FELSZERELÉS /
 INSTALLAZIONE / INSTALLATION / УСТАНОВКА / INSTALLATION / INSTALACE / INSTALARE



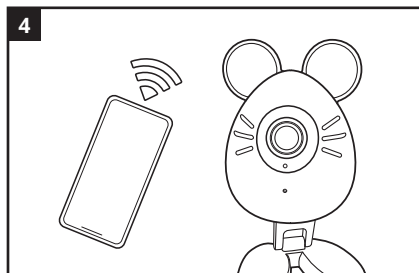
EN Take the device and its parts out of the packaging.



EN Insert the USB cable into the port at the back of the camera body.



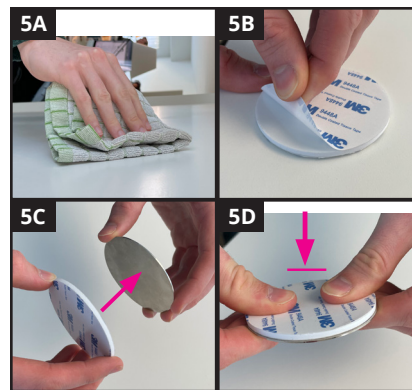
EN Attach the power cord to the USB adapter, and plug it into the wall socket. Secure excess power cord with a tie wrap to prevent pet chewing and entanglement.



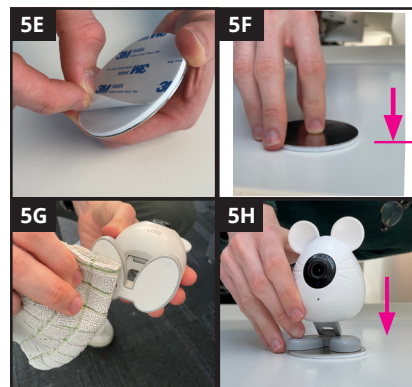
EN Connect the device to the Catit® PIXI™ app. (OPTIONAL: Pair the camera with other Catit® PIXI™ Smart devices for added functionality) See instructions in Wi-Fi/app section.



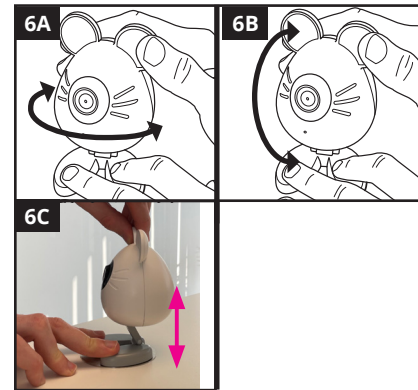
EN The camera can be **mounted** using the metal mounting disc. Use the 3M self-adhesive sticker provided to keep the metal disc in place for added stability.



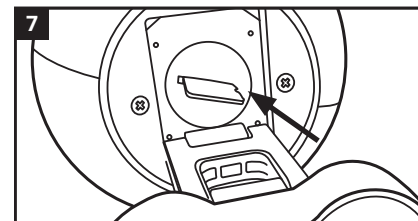
EN Choose a location to mount the camera. First clean and dry the surface, so it's free of any dust and debris. The sticker will only adhere to smooth, rigid surfaces. Peel off the foil on one end of the double-sided sticker, apply it to the metal disc and press it down evenly for 10 seconds.



EN Peel off the foil on the other side of the sticker. To apply, press the sticker onto the surface for 10 seconds. **Ensure the anti-skid layer on the camera's feet is clean and free of dust.** Place the camera onto the metal disc with magnetic feet facing down.



EN Check the camera image in the mobile app as you position the camera body. Hold down the camera's feet as you angle and rotate the camera body. **RECOMMENDED:** Position the camera as close to the network router as possible for optimal functionality.



EN RECOMMENDED: Insert a micro SD-card (max. 128GB storage) in the slot at the bottom of the camera for data storage and automatic video recordings.

EN PLEASE VISIT [HTTPS://WWW.CATIT.COM/HELP-ADVICE/](https://www.catit.com/help-advice/) FOR THE LATEST INFORMATION AND GUIDES.



Quick setup
1. Scan this QR code and download the app, which is available in the App Store and on Google Play. Click "Sign up" to get walked through creating your account.

2. Plug the camera's adapter into an electrical socket so the device becomes operational.

Check if the Wi-Fi LED on the back of the device is blinking, indicating the device is ready to connect to Wi-Fi. (If not, see 'Troubleshooting' below.) Open the App and click the + button to get walked through the Setup steps.

Wi-Fi LED guide (located on the back of the camera body):

- Blinking blue: Ready to connect to Wi-Fi
- Steady blue: Connected to Wi-Fi

Troubleshooting:

- The camera doesn't support 5 GHz Wi-Fi, please make sure your Wi-Fi is 2.4 GHz.
- If the Wi-Fi LED is not blinking after the camera is switched on, use a pen to press the reset button at the bottom of the device and hold it for 5 seconds until the Wi-Fi LED starts blinking.
- If you have trouble establishing a Wi-Fi connection or are experiencing video streaming issues, check that you are within range of the Wi-Fi signal and there aren't too many obstructions (such as walls) weakening the Wi-Fi signal strength.

There are two ways for the Catit® PIXI™ Smart Mouse Camera to connect to your Wi-Fi / Wireless router:

- **QR code (default):** The mobile app will ask you to provide your wireless router info (SSID and password). The app will then generate a QR code containing this information, which you need to scan using the camera. The camera uses this information to automatically connect to your Wi-Fi network. If you have difficulties scanning the QR code, try again or use AP mode to connect (see below).
- **AP mode (can be selected at the beginning of the connection procedure):** Select the PIXI™ Smart Mouse Camera's signal from your mobile phone's Wi-Fi / WLAN

list. The camera will be listed as "SmartLife-XXXX". Once the connection is established, the app can connect to the PIXI™ Smart Mouse Camera and transfer your wireless router info (SSID and password). The camera uses this information to automatically connect to your Wi-Fi network.

With the mobile app, the following features can be controlled remotely (Please ensure you have the latest app version installed):

- **Watch live:** Watch a live stream of the camera's field of view
- **Digital Zoom:** Pinch the image to zoom in or zoom out
- **Take photos / make video recordings:** Save captured images/video to your smartphone's camera roll. To record and save video automatically (by motion-detection), continuously, or with a timer, an additional micro SD-card is required (max. 128GB, not included).
- **Selective motion-detection:** Select areas in the camera's field of view that will trigger a notification or automatic recording when motion is registered
- **Two-way audio:** Listen and talk to your cat through the camera's built-in mic and speaker
- **Nightvision:** Option to automatically switch to infrared imagery in low light conditions (can be enabled/disabled in the app).
- **Video playback:** Watch previously recorded video (Micro SD-card required, max. 128GB).
- **SD/HD:** Option to switch between SD and HD image/video. SD is the default setting.
- **Notifications:** (If enabled) Receive smartphone notifications when motion is detected in the marked areas.
- **Pair with Catit PIXI Smart devices:** The camera can be paired with other Catit PIXI Smart devices to keep watching as you control the other device in the app.
- **(Shared) Connection:** It's possible to connect multiple PIXI™ Smart Mouse Cameras to your account and give each of them a unique name. You can also share the device with other accounts (e.g. family, cat sitter) so they can control and monitor it for you.

For a complete overview and guide on how to use the app features, please visit <https://www.catit.com/help-advice/>

(OPTIONAL:) To pair the Catit® PIXI™ Smart Mouse Camera to other Catit® PIXI™ Smart devices: Open the Catit® PIXI™ app on your smartphone, and select the Catit® PIXI™ Smart device you want to pair the camera with. Open the settings menu, tap on 'Pair' and select the camera. If successful, a camera icon will be added to that particular PIXI™ Smart device in your app Home screen.

PLEASE VISIT [HTTPS://WWW.CATIT.COM/HELP-ADVICE/](https://www.catit.com/help-advice/) FOR THE LATEST INFORMATION AND GUIDES.

Problem	Possible solution / effect
Part of the camera image is blurry	Check if the camera lens / surrounding black area is clean and the field of view is not obstructed.
The camera image is low-quality	The camera is set to SD by default. To improve the image resolution, switch to HD in the mobile app.
The camera feed is slow	Your Wi-Fi connection may be poor. Try switching from HD to SD using the mobile app, or when you're at home, try moving the camera closer to your network router.
The camera/app is unresponsive	Return to the app's main menu or restart the app and try again.
My Wi-Fi / Internet is down, can I still use the camera?	The camera can only function when connected to Wi-Fi using the mobile app.

EN

FCC Note:

This device complies with part 15 of the FCC Rules. Operation is subject to the following two conditions: (1) This device may not cause harmful interference, and (2) this device must accept any interference received, including interference that may cause undesired operation.

Note: The Grantee is not responsible for any changes or modifications not expressly approved by the party responsible for compliance. Such modifications could void the user's authority to operate the equipment.

Note: This equipment has been tested and found to comply with the limits for a Class B digital device, pursuant to part 15 of the FCC rules. These limits are designed to provide reasonable protection against harmful interference in a residential installation. This equipment generates, uses and can radiate radio frequency energy and, if not installed and used in accordance with the instructions, may cause harmful interference to radio communications.

However, there is no guarantee that interference will not occur in a particular installation. If this equipment does cause harmful interference to radio or television reception, which can be determined by turning the equipment off and on, the user is encouraged to try to correct the interference by one or more of the following measures:

- Reorient or relocate the receiving antenna
- Increase the separation between the equipment and receiver
- Connect the equipment into an outlet on a circuit different from that to which the receiver is connected
- Consult the dealer or an experienced radio/TV technician for help.

FCC Radiation Exposure statement

This equipment complies with FCC radiation exposure limits set forth for an uncontrolled environment. This equipment should be installed and operated with minimum distance 20cm between the radiator and your body. This transmitter must not be co-located or operating in conjunction with any other antenna or transmitter.

This device complies with Part 15 of the FCC Rules. Operation is subject to the following two conditions: (1) this device may not cause harmful interference, and (2) this device must accept any interference received, including interference that may cause undesired operation.

MAINTENANCE

WARNING: Always unplug or disconnect the camera from the electrical supply with dry hands whenever the camera is being installed, maintained or handled.

Do NOT clean the device using water, as this may damage the electrical components inside. Avoid touching the lens with your fingers to prevent scratches and smudges. To clean the lens, use a microfiber cloth only and gently rub it in circles over the lens surface.

WARRANTY

Your Catit® PIXI™ Smart Mouse Camera is guaranteed for defective parts and workmanship for a period of 2 years from the date of purchase. This guarantee is valid with proof of purchase only. The guarantee is limited to repair or replacement only and does not cover consequential loss, loss or damage to livestock and personal property or damage to animate or inanimate objects, irrespective of the cause thereof. This guarantee is valid only under normal operating conditions for which the unit is intended. It excludes any damage caused by unreasonable use, negligence, improper installation, tampering, abuse or commercial use. The warranty does not cover wear and tear or parts which have not been adequately or correctly maintained. THIS DOES NOT AFFECT YOUR STATUTORY RIGHTS. For warranty service, contact your local pet product dealer or write to the Catit® representative in your country.



EN Help & Advice

Scan the QR code or visit <https://www.catit.com/help-advice/> for the latest information and guides.

FR Aide et conseils

Scanner le code QR ou visiter le <https://www.catit.com/fr/aide-conseils/> pour les guides d'instructions et les renseignements les plus récents.

DE Hilfe & Empfehlungen

Scannen Sie den QR-Code oder besuchen Sie <https://www.catit.com/de/hilfe-empfehlungen/> und erhalten Sie weitere Informationen und Empfehlungen zu diesem Produkt.

ES Ayuda y Consejo

Escanee el QR o visite <https://www.catit.com/es/ayuda-consejo/> para obtener la información y las guías más recientes.

PT Ajuda e Conselhos

Digitalize o QR ou visite <https://www.catit.com/es/ayuda-consejo/> para obter as informações e guias mais recentes.

NL Hulp & advies

Scan de QR-code of surf naar <https://www.catit.com/help-advice/> voor de meest recente informatie en handleidingen.

PL Pomoc i porady

Zeskanuj QR lub odwiedź stronę <https://www.catit.com/help-advice/>, aby uzyskać najnowsze informacje i przewodniki.

HU Segítség és Tanács

Olvassa be a QR kódot vagy látogasson a <https://www.catit.com/help-advice/> webhelyre a legfrissebb információkért és útmutatókért.

IT Aiuto e consulenza

Per le informazioni e istruzioni più aggiornate, scansionare il codice QR o visitare il sito <https://www.catit.com/help-advice/>.

DK Hjælp & gode råd

Scan QR-koden eller besøg <https://www.catit.com/help-advice/> for at få de nyeste oplysninger og vejledninger.

RU Помощь и рекомендации

Отсканируйте QR-код или зайдите на сайт <https://www.catit.com/help-advice/>, где можно найти самую последнюю информацию и руководства.

SW Hjälp och råd

Skanna QR-koden eller gå till <https://www.catit.com/help-advice/> för den senaste informationen eller vägledningar.

CZ Pomoc a rada

Naskenujte QR nebo navštivte <https://www.catit.com/help-advice/>, kde najdete nejnovější informace a průvodce.

RO Ajutor și consultanță

Scanați codul QR sau vizitați <https://www.catit.com/help-advice/> pentru cele mai recente informații și instrucțiuni.

Distributed by / Distribué par / Distribuido por:

Germany: HAGEN Deutschland GmbH & Co. KG, 25488 Holm
U.S.A.: Rolf C. Hagen (U.S.A.) Corp., Mansfield, MA 02048
U.K.: Rolf C. Hagen (U.K.) Ltd., Castleford, W. Yorkshire WF10 5QH
Canada: Rolf C. Hagen Inc., Montréal (Quebec) H9X 0A2
España y Portugal: Rolf C. Hagen España S.A., Av. de Beniparrell n.11 y 13, 46460 Silla, Valencia
Malaysia: Rolf C. Hagen (SEA) Sdn Bhd 43200 Cheras, Selangor D.E.
Argentina: Hagen S.A. Argentina, Rutherford 4459, Malvinas Argentina – CP 1615, Pcia. Bs.As.

Made in China / Fabriqué en Chine / Hecho en China

43758

Printed in China
Imprimé en Chine
VER. 03/22



CATIT.COM