

S

T

S

L

A

B



FCC SAR TEST REPORT

Report No: STS1709082H01

Issued for

Synergem, Inc.

2323 Randolph Avenue, Avenel, New Jersey 07001, US.

Product Name:	Call Button
Brand Name:	N/A
Test Model Name:	Call Button with LED lights
Series Model:	Call Button, Call Button with audio, Call Button with video screen.
FCC ID:	2ANPH-CALL
Test Standard:	ANSI/IEEE Std. C95.1
	FCC 47 CFR Part 2 (2.1093)
	IEEE 1528: 2013
Max. Report SAR (1g):	Body: 1.333

Any reproduction of this document must be done in full. No single part of this document may be reproduced without permission from STS, All Test Data Presented in this report is only applicable to presented Test sample.





Test Report Certification

Applicant's name: Synergem, Inc.

Address: 2323 Randolph Avenue, Avenel, New Jersey 07001, US.

Manufacture's Name: Synergem, Inc.

Address: 2323 Randolph Avenue, Avenel, New Jersey 07001, US.

Product description

Product name: Call Button

Trademark: N/A

Model and/or type reference : Call Button with LED lights

Series Model.....: Call Button, Call Button with audio, Call Button with video screen.

Standards: ANSI/IEEE Std. C95.1-1992
FCC 47 CFR Part 2 (2.1093)
IEEE 1528: 2013

The device was tested by Shenzhen STS Test Services Co., Ltd. in accordance with the measurement methods and procedures specified in KDB 865664 The test results in this report apply only to the tested sample of the stated device/equipment. Other similar device/equipment will not necessarily produce the same results due to production tolerance and measurement uncertainties.

Date of Test:

Date (s) of performance of tests: 20 Sep. 2017

Date of Issue: 21 Sep. 2017

Test Result.....: **Pass**

Testing Engineer :

Aaron Bu

(Aaron Bu)

Technical Manager :

John Zou

(John Zou)

Authorized Signatory :

Vita Li

(Vita Li)





Table of Contents

1.General Information	4
1.1 EUT Description	4
1.2 Test Environment	5
1.3 Test Factory	5
2.Test Standards And Limits	6
3. SAR Measurement System	7
3.1 Definition Of Specific Absorption Rate (SAR)	7
3.2 SAR System	7
4. Tissue Simulating Liquids	10
4.1 Simulating Liquids Parameter Check	10
5. SAR System Validation	12
5.1 Validation System	12
5.2 Validation Result	12
6. SAR Evaluation Procedures	13
7. EUT Antenna Location Sketch	14
7.1 SAR test exclusion consider table	15
8. EUT Test Position	16
8.1 Define Two Imaginary Lines On The Handset	16
8.2 Hotspot mode exposure position condition	16
9. Uncertainty	17
9.1 Measurement Uncertainty	17
9.2 System validation Uncertainty	19
10. Conducted Power Measurement	21
10.1 Test Result	21
10.2 Tune-up Power	21
11. EUT And Test Setup Photo	22
11.1 EUT Photo	22
11.2 Setup Photo	26
12. SAR Result Summary	29
12.1 Body-worn	29
11.3 repeated SAR measurement	29
13. Equipment List	30
Appendix A. System Validation Plots	31
Appendix B. SAR Test Plots	35
Appendix C. Probe Calibration And Dipole Calibration Report	37



1. General Information

Environmental evaluation measurements of specific absorption rate (SAR) distributions in emulated human head and body tissues exposed to radio frequency (RF) radiation from wireless portable devices for compliance with the rules and regulations of the U.S. Federal Communications Commission (FCC).

1.1 EUT Description

Equipment	Call Button		
Brand Name	N/A		
Test Model No.	Call Button with LED lights		
Series Model	Call Button,Call Button with audio,Call Button with video screen.		
FCC ID	2ANPH-CALL		
Model Difference	Only different in model name		
Battery	Rated Voltage: 3.7V; Charge Limit: 4.2V; Capacity: 950mAh		
Device Category	Portable		
Product stage	Production unit		
RF Exposure Environment	General Population / Uncontrolled		
Hardware Version	v1.0		
Software Version	v1.0		
Frequency Range	GSM 850:824.2~848.8MHz PCS1900:1850.2~1909.8MHz		
Max. Reported SAR(1g): (Limit:1.6W/kg)	Band	Mode	Body Worn (W/kg)
	PCT	GSM 850	0.298
	PCT	GSM 1900	1.333
FCC Equipment Class	Licensed Transmitter worn on body (PCT)		
Operating Mode:	GSM: GSM Voice;		
Antenna Specification:	GSM: MONOPOLE Antenna		
SIM Card	Only single card		
Hotspot Mode:	Not Support		
DTM Mode:	Not Support		
Note: 1 The EUT battery must be fully charged and checked periodically during the test to ascertain uniform power			



1.2 Test Environment

Ambient conditions in the SAR laboratory:

Items	Required
Temperature (°C)	18-25
Humidity (%RH)	30-70

1.3 Test Factory

Shenzhen STS Test Services Co., Ltd.

Add. : 1/F., Building B, Zhuoke Science Park, No.190, Chongqing Road,
Fuyong Street, Bao'an District, Shenzhen, Guangdong, China

CNAS Registration No.: L7649

FCC Registration No.: 625569

IC Registration No.: 12108A





2. Test Standards And Limits

No.	Identity	Document Title
1	47 CFR Part 2	Frequency Allocations and Radio Treaty Matters; General Rules and Regulations
2	ANSI/IEEE Std. C95.1-1992	IEEE Standard for Safety Levels with Respect to Human Exposure to Radio Frequency Electromagnetic Fields, 3 kHz to 300 GHz
3	IEEE Std. 1528-2013	Recommended Practice for Determining the Peak Spatial-Average Specific Absorption Rate (SAR) in the Human Head from Wireless Communications Devices: Measurement Techniques
4	FCC KDB 447498 D01 v06	Cell Button and Portable Device RF Exposure Procedures and Equipment Authorization Policies
5	FCC KDB 865664 D01 v01r04	SAR Measurement 100 MHz to 6 GHz
6	FCC KDB 865664 D02 v01r02	RF Exposure Reporting
7	FCC KDB 648474 D04 v01r03	SAR Evaluation Considerations for Wireless Handsets

(A). Limits for Occupational/Controlled Exposure (W/kg)

Whole-Body	Partial-Body	Hands, Wrists, Feet and Ankles
0.4	8.0	20.0

(B). Limits for General Population/Uncontrolled Exposure (W/kg)

Whole-Body	Partial-Body	Hands, Wrists, Feet and Ankles
0.08	1.6	4.0

NOTE: Whole-Body SAR is averaged over the entire body, partial-body SAR is averaged over any 1 gram of tissue defined as a tissue volume in the shape of a cube. SAR for hands, wrists, feet and ankles is averaged over any 10 grams of tissue defined as a tissue volume in the shape of a cube.

Population/Uncontrolled Environments:

are defined as locations where there is the exposure of individuals who have no knowledge or control of their exposure.

Occupational/Controlled Environments:

are defined as locations where there is exposure that may be incurred by people who are aware of the potential for exposure, (i.e. as a result of employment or occupation).

NOTE

GENERAL POPULATION/UNCONTROLLED EXPOSURE

PARTIAL BODY LIMIT

1.6 W/kg

3. SAR Measurement System

3.1 Definition Of Specific Absorption Rate (SAR)

SAR is related to the rate at which energy is absorbed per unit mass in an object exposed to a radio field. The SAR distribution in a biological body is complicated and is usually carried out by experimental techniques or numerical modeling. The standard recommends limits for two tiers of groups, occupational/controlled and general population/uncontrolled, based on a person's awareness and ability to exercise control over his or her exposure. In general, occupational/controlled exposure limits are higher than the limits for general population/uncontrolled.

The SAR definition is the time derivative (rate) of the incremental energy (dW) absorbed by (dissipated in) an incremental mass (dm) contained in a volume element (dv) of a given density (ρ). The equation description is as below:

$$SAR = \frac{d}{dt} \left(\frac{dW}{dm} \right) = \frac{d}{dt} \left(\frac{dW}{\rho dv} \right)$$

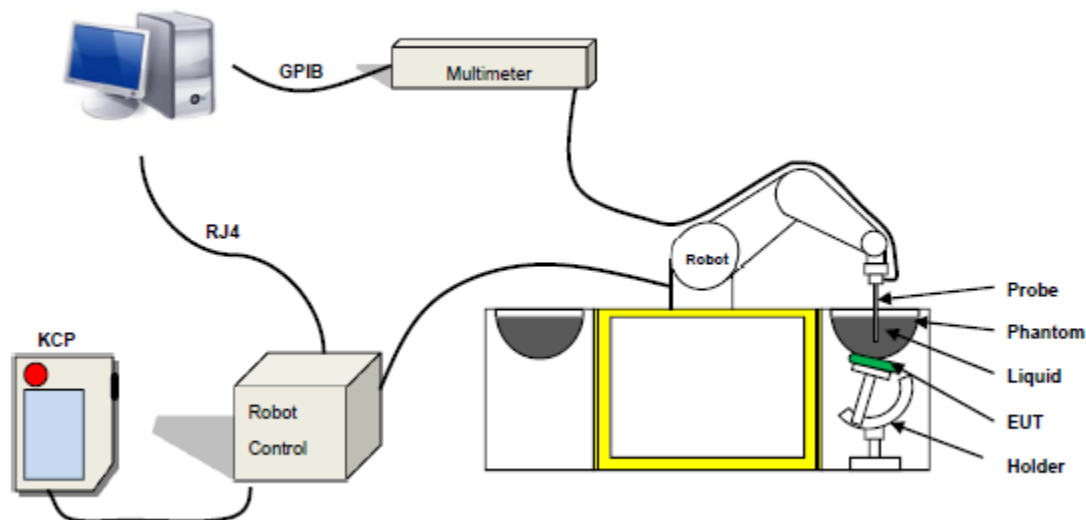
SAR is expressed in units of Watts per kilogram (W/kg) SAR measurement can be related to the electrical field in the tissue by

$$SAR = \frac{\sigma E^2}{\rho}$$

Where: σ is the conductivity of the tissue,
ρ is the mass density of the tissue and E is the RMS electrical field strength.

3.2 SAR System

SATIMO SAR System Diagram:



Comosar is a system that is able to determine the SAR distribution inside a phantom of human being according to different standards. The Comosar system consists of the following items:

- Main computer to control all the system
- 6 axis robot
- Data acquisition system
- Miniature E-field probe
- Phone holder
- Head simulating tissue

The following figure shows the system.



The EUT under test operating at the maximum power level is placed in the phone holder, under the phantom, which is filled with head simulating liquid. The E-Field probe measures the electric field inside the phantom. The OpenSAR software computes the results to give a SAR value in a 1g or 10g mass.

3.2.1 Probe

For the measurements the Specific Dosimetric E-Field Probe SN 14/16 EP309 with following specifications is used

- Dynamic range: 0.01-100 W/kg
- Tip Diameter: 5 mm
- Length of Individual Dipoles: 4.5 mm
- Maximum external diameter: 8 mm
- Distance between dipole/probe extremity: 8 mm (repeatability better than +/- 2.7mm)
- Probe linearity: $0 \pm 2.27\%$ ($\pm 0.10\text{dB}$)
- Axial Isotropy: $< 0.10\text{ dB}$
- Spherical Isotropy: $< 0.10\text{ dB}$
- Calibration range: 400 MHz to 3 GHz for head & body simulating liquid.
- Angle between probe axis (evaluation axis) and surface normal line: less than 30°



Figure 1-MVG COMOSAR Dosimetric E field Dipole

3.2.2 Phantom

For the measurements the Specific Anthropomorphic Mannequin (SAM) defined by the IEEE SCC-34/SC2 group is used. The phantom is a polyurethane shell integrated in a wooden table. The thickness of the phantom amounts to 2mm \pm 0.2mm. It enables the dosimetric evaluation of left and right phone usage and includes an additional flat phantom part for the simplified performance check. The phantom set-up includes a cover, which prevents the evaporation of the liquid.

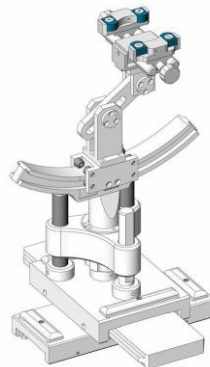


Figure-SN 32/14 SAM115



Figure-SN 32/14 SAM116

3.2.3 Device Holder



The SAR in the phantom is approximately inversely proportional to the square of the distance between the source and the liquid surface. For a source at 5 mm distance, a positioning uncertainty of \pm 0.5 mm would produce a SAR uncertainty of \pm 20 %. Accurate device positioning is therefore crucial for accurate and repeatable measurements. The positions in which the devices must be measured are defined by the standards.



4. Tissue Simulating Liquids

4.1 Simulating Liquids Parameter Check

The head tissue dielectric parameters recommended by the IEEE SCC-34/SC-2 in P1528 have been incorporated in the following table. These head parameters are derived from planar layer models simulating the highest expected SAR for the dielectric properties and tissue thickness variations in a human head. Other head and body tissue parameters that have not been specified in P1528 are derived from the tissue dielectric parameters computed from the 4-Cole-Cole equations described in Reference [12] and extrapolated according to the head parameters specified in P1528.

Frequency (MHz)	Bactericide	DGBE	HEC	NaCl	Sucrose	1,2-Propanediol	X100	Water	Conductivity	Permittivity
	%	%	%	%	%	%	%	%	σ	ϵ_r
750	/	/	/	0.79	/	64.81	/	34.40	0.97	41.8
835	/	/	/	0.79	/	64.81	/	34.40	0.97	41.8
900	/	/	/	0.79	/	64.81	/	34.40	0.97	41.8
1800	/	13.84	/	0.35	/	/	30.45	55.36	1.38	41.0
1900	/	13.84	/	0.35	/	/	30.45	55.36	1.38	41.0
2000	/	7.99	/	0.16	/	/	19.97	71.88	1.55	41.1
2450	/	7.99	/	0.16	/	/	19.97	71.88	1.88	40.3
2600	/	7.99	/	0.16	/	/	19.97	71.88	1.88	40.3

Tissue dielectric parameters for head and body phantoms				
Frequency	ϵ_r		σ S/m	
	Head	Body	Head	Body
300	45.3	58.2	0.87	0.92
450	43.5	58.7	0.87	0.94
900	41.5	55.0	0.97	1.05
1450	40.5	54.0	1.20	1.30
1800	40.0	53.3	1.40	1.52
2450	39.2	52.7	1.80	1.95
3000	38.5	52.0	2.40	2.73
5800	35.3	48.2	5.27	6.00

**LIQUID MEASUREMENT RESULTS**

Date	Ambient condition		Body Simulating Liquid		Parameters	Target	Measured	Deviation [%]	Limited [%]
	Temp. [°C]	Humidity [%]	Frequency	Temp. [°C]					
2017-09-20	22.9	56	835 MHz	22.6	Permittivity:	55.20	55.46	0.46	± 5
					Conductivity	0.97	0.95	-2.37	± 5
2017-09-20	22.9	56	1900 MHz	22.6	Permittivity:	53.30	52.02	-2.39	± 5
					Conductivity	1.52	1.55	1.84	± 5

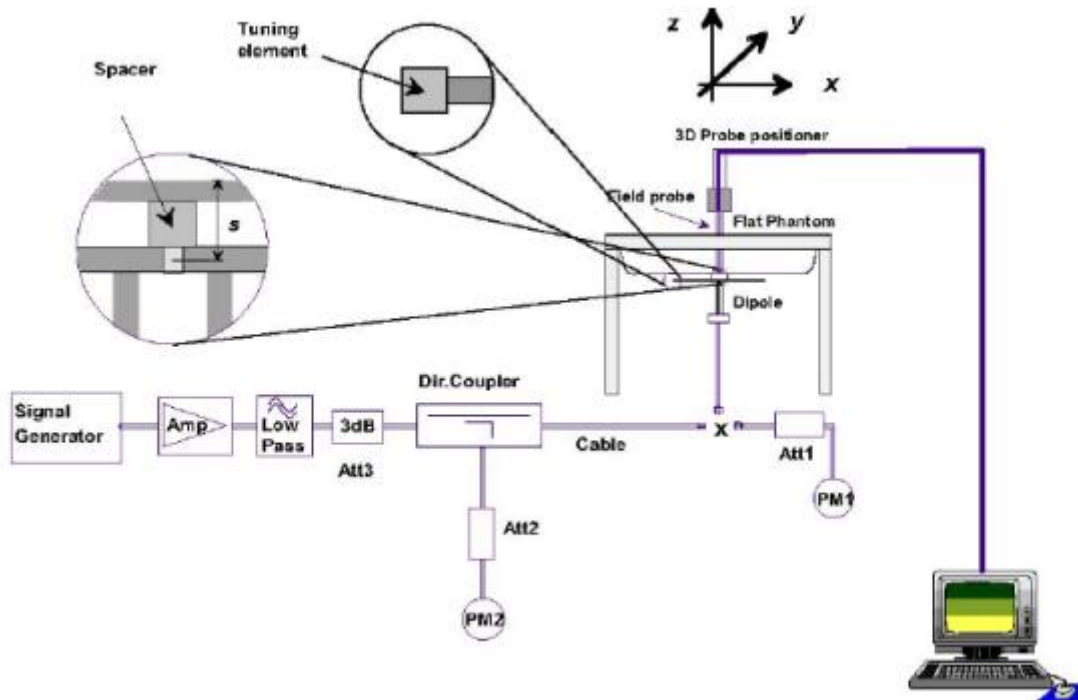


5. SAR System Validation

5.1 Validation System

Each SATIMO system is equipped with one or more system validation kits. These units, together with the predefined measurement procedures within the SATIMO software, enable the user to conduct the system performance check and system validation. System kit includes a dipole, and dipole device holder.

The system check verifies that the system operates within its specifications. It's performed daily or before every SAR measurement. The system check uses normal SAR measurement in the flat section of the phantom with a matched dipole at a specified distance. The system validation setup is shown as below.



5.2 Validation Result

Comparing to the original SAR value provided by SATIMO, the validation data should be within its specification of 10 %.

Freq.(MHz)	Power(mW)	Tested Value (W/Kg)	Normalized SAR (W/kg)	Target(W/Kg)	Tolerance(%)	Date
835 Body	100	0.969	9.692	9.56	1.38	2017-09-20
1900 Body	100	4.050	40.500	39.7	2.01	2017-09-20

Note: The tolerance limit of System validation $\pm 10\%$.



6. SAR Evaluation Procedures

The procedure for assessing the average SAR value consists of the following steps:

The following steps are used for each test position

- Establish a call with the maximum output power with a base station simulator. The connection between the mobile and the base station simulator is established via air interface
- Measurement of the local E-field value at a fixed location. This value serves as a reference value for calculating a possible power drift.
- Measurement of the SAR distribution with a grid of 8 to 16mm * 8 to 16 mm and a constant distance to the inner surface of the phantom. Since the sensors cannot directly measure at the inner phantom surface, the values between the sensors and the inner phantom surface are extrapolated. With these values the area of the maximum SAR is calculated by an interpolation scheme.
- Around this point, a cube of 30 * 30 * 30 mm or 32 * 32 * 32 mm is assessed by measuring 5 or 8 * 5 or 8*4 or 5 mm. With these data, the peak spatial-average SAR value can be calculated.

Area Scan& Zoom Scan:

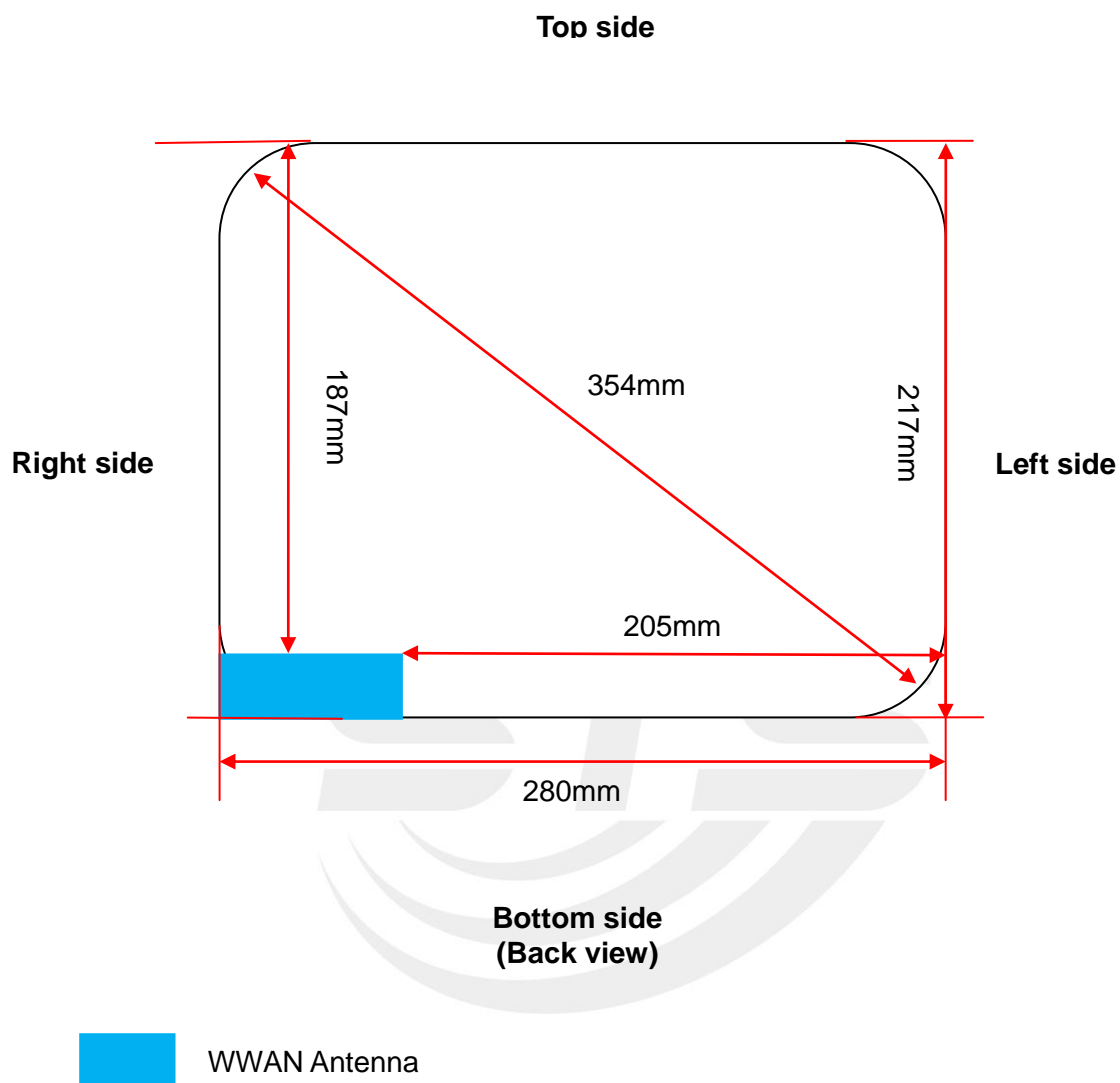
First Area Scan is used to locate the approximate location(s) of the local peak SAR value(s). The measurement grid within an Area Scan is defined by the grid extent, grid step size and grid offset. Next, in order to determine the EM field distribution in a three-dimensional spatial extension, Zoom Scan is required. The Zoom Scan is performed around the highest E-field value to determine the averaged SAR -distribution over 10 g. Area scan and zoom scan resolution setting follows KDB 865664 D01v01r01 quoted below.

When the 1-g SAR of the highest peak is within 2 dB of the SAR limit, additional zoom scans are required for other peaks within 2 dB of the highest peak that have not been included in any zoom scan to ensure there is no increase in SAR.



7. EUT Antenna Location Sketch

It is a Call Button, support GSM mode.





7.1 SAR test exclusion consider table

According with FCC KDB 447498 D01, appendix A, <SAR test exclusion thresholds for 100MHz ~ 6GHz and ≤50mm> table, this device SAR test configurations consider as following:

Band	Test position configurations					
	Front	Back	Right edge	Left edge	Top edge	Bottom edge
WWAN	<5mm	<5mm	<5mm	205mm	187mm	<5mm
	Yes	Yes	Yes	No	No	Yes

Note:

1. maximum power is the source-based time-average power and represents the maximum RF output power among production units.
2. per KDB 447498 D01, for larger devices, the test separation distance of adjacent edge configuration is determined by the closest separation between the antenna and the user.
3. per KDB 447498 D01, standalone SAR test exclusion threshold is applied; if the distance of the antenna to the user is <5mm, 5mm is user to determine SAR exclusion threshold
4. per KDB 447498 D01, the 1-g and 10-g SAR test exclusion thresholds for 100 MHz to 6 GHz at test separation distance ≤50mm are determined by:

$$[(\text{max.power of channel, including tune-up tolerance, Mw}) / (\text{min. test separation distance, mm})] * \sqrt{f(\text{GHZ})} \leq 3.0 \text{ for 1-g SAR and } \leq 7.5 \text{ for 10-g extremity SAR}$$

$$f(\text{GHZ}) \text{ is the RF channel transmit frequency in GHz. Power and distance are rounded to the nearest mW and mm before calculation. The result is rounded to one decimal place for comparison}$$

For <50mm distance, we just calculate mW of the exclusion threshold value(3.0)to do compare
5. per KDB 447498 D01, at 100 MHz to 6GHz and for test separation distances >50mm, the SAR test exclusion threshold is determined according to the following
 - a)[threshold at 50mm in step 1]+(test separation distance -50mm)*(f (MHz)/150)]Mw, at 100 MHz to 1500 MHz
 - b) [threshold at 50mm in step1]+(test separation distance -50mm) *10]mW at> 1500MHz and ≤6GHz
6. Per KDB 447498 D02, RMC 12.2kbps setting is used to evaluate SAR. If HSDPA/ HSUPA/DC-HSDPA output power is<0.25db higher than RMC 12.2Kbps,or reported SAR with RMC 12.2kbps setting is ≤1.2W/Kg, HSDPA/HSUPA/DC-HSDPA SAR evaluation can be excluded.
7. Per KDB 248227 D01, choose the highest output power channel to test SAR and determine further SAR exclusion 8.for each frequency band ,testing at higher data rates and higher order modulations is not required when the maximum average output power for each of each of these configurations is less than 1/4db higher than those measured at the lower data rate than 11b mode ,thus the SAR can be excluded.

8. EUT Test Position

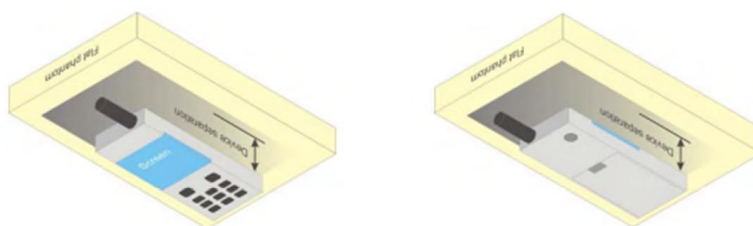
This EUT was tested in Front Face and Rear Face.

8.1 Define Two Imaginary Lines On The Handset

(1) The vertical centerline passes through two points on the front side of the handset the midpoint of the width w_t of the handset at the level of the acoustic output, and the midpoint of the width w_b of the handset.

(2) The horizontal line is perpendicular to the vertical centerline and passes through the center of the acoustic output. The horizontal line is also tangential to the face of the handset at point A.

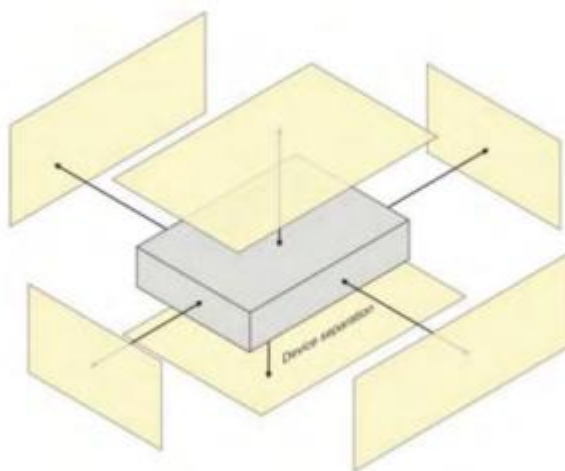
(3) The two lines intersect at point A. Note that for many handsets, point A coincides with the center of the acoustic output; however, the acoustic output may be located elsewhere on the horizontal line. Also note that the vertical centerline is not necessarily to the front face of the handset, especially for clamshell handsets, handsets with flip covers, and other irregularly shaped handsets.



8.2 Hotspot mode exposure position condition

For handsets that support hotspot mode operations, with wireless router capabilities and various web browsing function, the relevant hand and body exposure condition are tested according to the hotspot SAR procedures in KDB 941225. A test separation distance of 10 mm is required between the phantom and all surface and edges with a transmitting antenna located within 25 mm from that surface or edge.

When form factor of a handset is smaller than 9cm x 5cm, a test separation distance of 5mm (instead of 10mm) is required for testing hotspot mode. When the separate distance required for body-worn accessory testing is larger than or equal to that tested for hotspot mode, in the same wireless mode and for the same surface of the phone, the hotspot mode SAR data may be used to support body-worn accessory SAR compliance for that particular configuration(surface).





9. Uncertainty

9.1 Measurement Uncertainty

The following measurement uncertainty levels have been estimated for tests performed on the EUT as specified in IEEE 1528: 2013. This uncertainty represents an expanded uncertainty expressed at approximately the 95% confidence level using a coverage factor of $k=2$.

NO	Source	Tol(%)	Prob. Dist.	Div. k	ci (1g)	ci (10g)	1gUi	10gUi	Veff
Measurement System									
1	Probe calibration	5.8	N	1	1	1	5.8	5.8	∞
2	Axial isotropy	3.5	R	$\sqrt{3}$	$(1-cp)^{1/2}$	$(1-cp)^{1/2}$	1.43	1.43	∞
3	Hemispherical isotropy	5.9	R	$\sqrt{3}$	$\sqrt{C_p}$	$\sqrt{C_p}$	2.41	2.41	∞
4	Boundary effect	1.0	R	$\sqrt{3}$	1	1	0.58	0.58	∞
5	Linearity	4.7	R	$\sqrt{3}$	1	1	2.71	2.71	∞
6	System Detection limits	1.0	R	$\sqrt{3}$	1	1	0.58	0.58	∞
7	Readout electronics	0.5	N	1	1	1	0.50	0.50	∞
8	Response time	0	R	$\sqrt{3}$	1	1	0	0	∞
9	Integration time	1.4	R	$\sqrt{3}$	1	1	0.81	0.81	∞
10	Ambient noise	3.0	R	$\sqrt{3}$	1	1	1.73	1.73	∞
11	Ambient reflections	3.0	R	$\sqrt{3}$	1	1	1.73	1.73	∞
12	Probe positioner mech. restrictions	1.4	R	$\sqrt{3}$	1	1	0.81	0.81	∞
13	Probe positioning with respect to phantom shell	1.4	R	$\sqrt{3}$	1	1	0.81	0.81	∞
14	Max.SAR evaluation	1.0	R	$\sqrt{3}$	1	1	0.6	0.6	∞
Test sample related									
15	Device positioning	2.6	N	1	1	1	2.6	2.6	11



16	Device holder	3	N	1	1	1	3.0	3.0	7
17	Drift of output power	5.0	R	√3	1	1	2.89	2.89	∞
Phantom and set-up									
18	Phantom uncertainty	4.0	R	√3	1	1	2.31	2.31	∞
19	Liquid conductivity (target)	2.5	N	1	0.78	0.71	1.95	1.78	5
20	Liquid conductivity (meas)	4	N	1	0.23	0.26	0.92	1.04	5
21	Liquid Permittivity (target)	2.5	N	1	0.78	0.71	1.95	1.78	∞
22	Liquid Permittivity (meas)	5.0	N	1	0.23	0.26	1.15	1.30	∞
Combined standard			RSS	$U_c = \sqrt{\sum_{i=1}^n C_i^2 U_i^2}$			10.63%	10.54%	
Expanded uncertainty (P=95%)		$U = k U_c, k=2$					21.26%	21.08%	



9.2 System validation Uncertainty

NO	Source	Tol(%)	Prob. Dist.	Div. k	ci (1g)	ci (10g)	1gUi	10gUi	Veff
Measurement System									
1	Probe calibration	5.8	N	1	1	1	5.8	5.8	∞
2	Axial isotropy	3.5	R	$\sqrt{3}$	$(1-c_p)^{1/2}$	$(1-c_p)^{1/2}$	1.43	1.43	∞
3	Hemispherical isotropy	5.9	R	$\sqrt{3}$	$\sqrt{C_p}$	$\sqrt{C_p}$	2.41	2.41	∞
4	Boundary effect	1.0	R	$\sqrt{3}$	1	1	0.58	0.58	∞
5	Linearity	4.7	R	$\sqrt{3}$	1	1	2.71	2.71	∞
6	System Detection limits	1.0	R	$\sqrt{3}$	1	1	0.58	0.58	∞
7	Modulation response	0	N	1	1	1	0	0	∞
8	Readout electronics	0.5	N	1	1	1	0.50	0.50	∞
9	Response time	0	R	$\sqrt{3}$	1	1	0	0	∞
10	Integration time	1.4	R	$\sqrt{3}$	1	1	0.81	0.81	∞
11	Ambient noise	3.0	R	$\sqrt{3}$	1	1	1.73	1.73	∞
12	Ambient reflections	3.0	R	$\sqrt{3}$	1	1	1.73	1.73	∞
13	Probe positioner mech. restrictions	1.4	R	$\sqrt{3}$	1	1	0.81	0.81	∞
14	Probe positioning with respect to phantom shell	1.4	R	$\sqrt{3}$	1	1	0.81	0.81	∞
15	Max.SAR evaluation	1.0	R	$\sqrt{3}$	1	1	0.6	0.6	∞
Dipole									
16	Deviation of experimental source from	4	N	1	1	1	4.00	4.00	∞



17	Input power and SAR drif measurement	5	R	√3	1	1	2.89	2.89	∞
18	Dipole Axis to liquid Distance	2	R	√3	1	1			∞
Phantom and set-up									
19	Phantom uncertainty	4.0	R	√3	1	1	2.31	2.31	∞
20	Uncertainty in SAR correction for deviation(in	2.0	N	1	1	0.84	2	1.68	∞
21	Liquid conductivity (target)	2	N	1	1	0.84	2.00	1.68	∞
22	Liquid conductivity (temperature uncertainty)	2.5	N	1	0.78	0.71	1.95	1.78	5
23	Liquid conductivity (meas)	4	N	1	0.23	0.26	0.92	1.04	5
24	Liquid Permittivity (target)	2.5	N	1	0.78	0.71	1.95	1.78	∞
25	Liquid Permittivity (temperature uncertainty)	2.5	N	1	0.78	0.71	1.95	1.78	5
26	Liquid Permittivity (meas)	5.0	N	1	0.23	0.26	1.15	1.30	∞
Combined standard			RSS	$U_c = \sqrt{\sum_{i=1}^n C_i^2 U_i^2}$			10.15%	10.05%	
Expanded uncertainty (P=95%)		$U = k U_c, k=2$					20.29%	20.10%	



10. Conducted Power Measurement

10.1 Test Result

Burst Average Power (dBm)						
Band	GSM 850			PCS 1900		
Channel	128	190	251	512	661	810
Frequency (MHz)	824.2	836.6	848.8	1850.2	1880.0	1909.8
GSM(GMSK, 1-Slot)	27.65	27.98	28.42	24.43	24.23	24.12
Remark: Multi-Slot Class 8 , Support Max 4 downlink, 1 uplink , 5 working link Multi-Slot Class 10 , Support Max 4 downlink, 2 uplink , 5 working link Multi-Slot Class 12 , Support Max 4 downlink, 4 uplink , 5 working link						

Fram- Average Power(dBm)						
Band	GSM 850			PCS 1900		
Channel	128	190	251	512	661	810
Frequency (MHz)	824.2	836.6	848.8	1850.2	1880.0	1909.8
GSM(GMSK, 1-Slot)	18.62	18.95	19.39	15.40	15.20	15.09
Remark : 1. SAR testing was performed on the maximum frame-averaged power mode. 2. The frame-averaged power is linearly proportion to the slot number configured and it is linearly scaled the maximum burst-averaged power based on time slots. The calculated method is shown as below: Frame-averaged power = Burst averaged power (1 Tx Slot) – 9.03 dB Frame-averaged power = Burst averaged power (2 Tx Slots) – 6.02 dB Frame-averaged power = Burst averaged power (3 Tx Slots) - 4.26 dB Frame-averaged power = Burst averaged power (4 Tx Slots) – 3.01 dB						

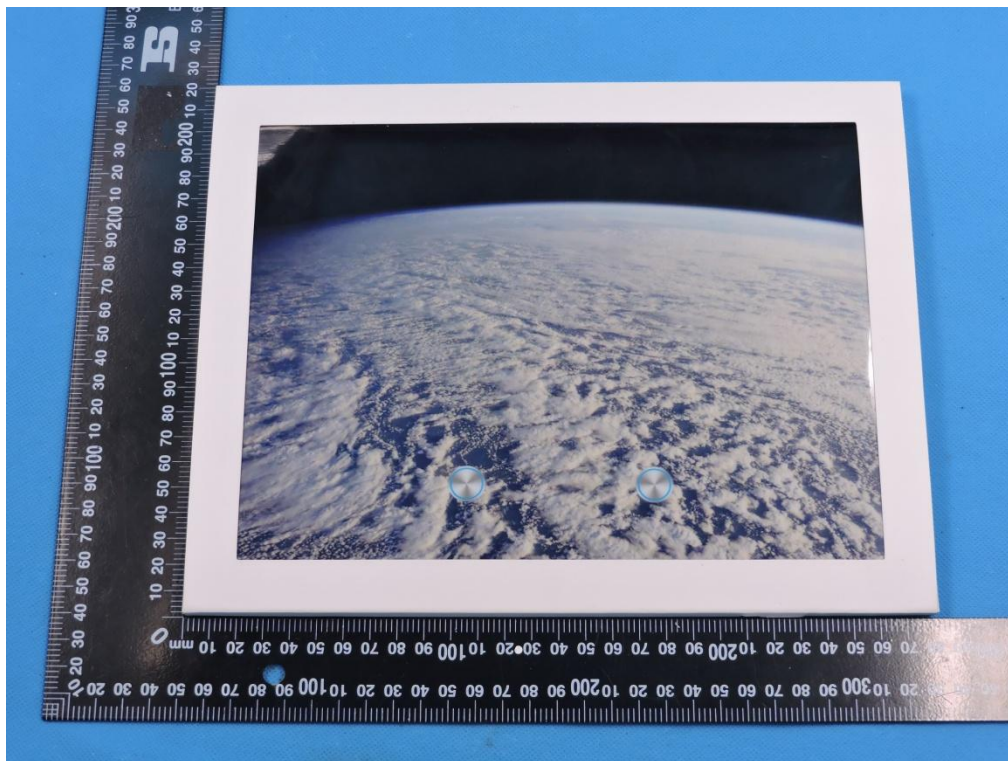
10.2 Tune-up Power

Mode	GSM850(AVG)	GSM1900(AVG)
GSM/PCS	28±1dBm	24±1dBm

11. EUT And Test Setup Photo

11.1 EUT Photo

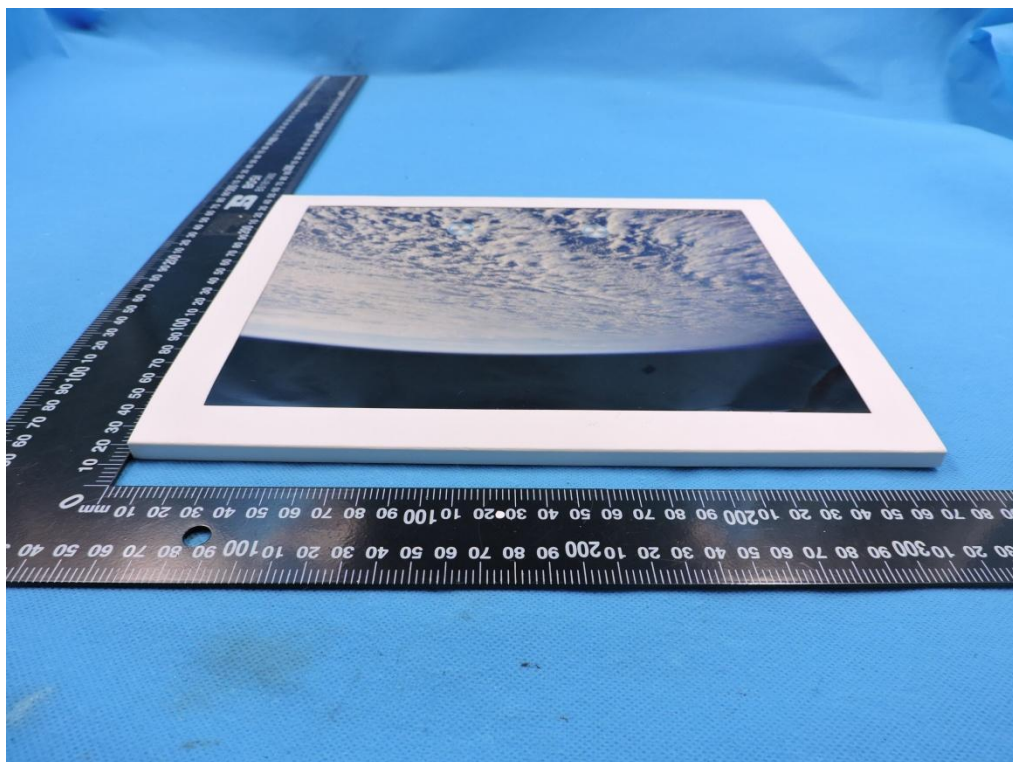
Front side



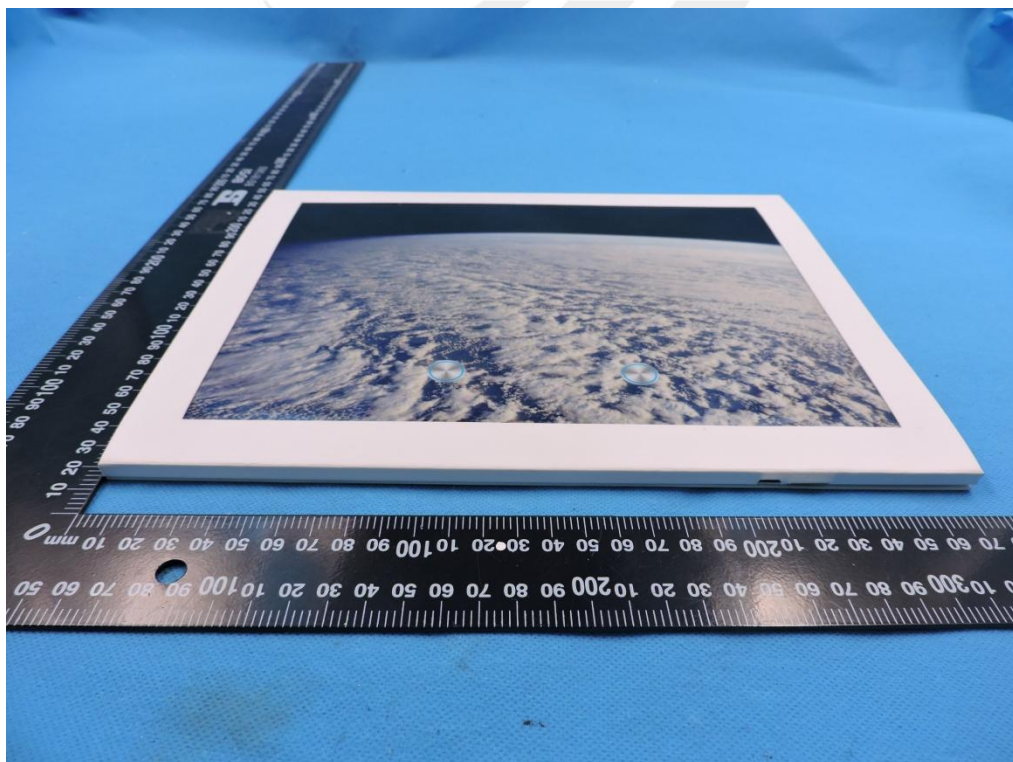
Back side



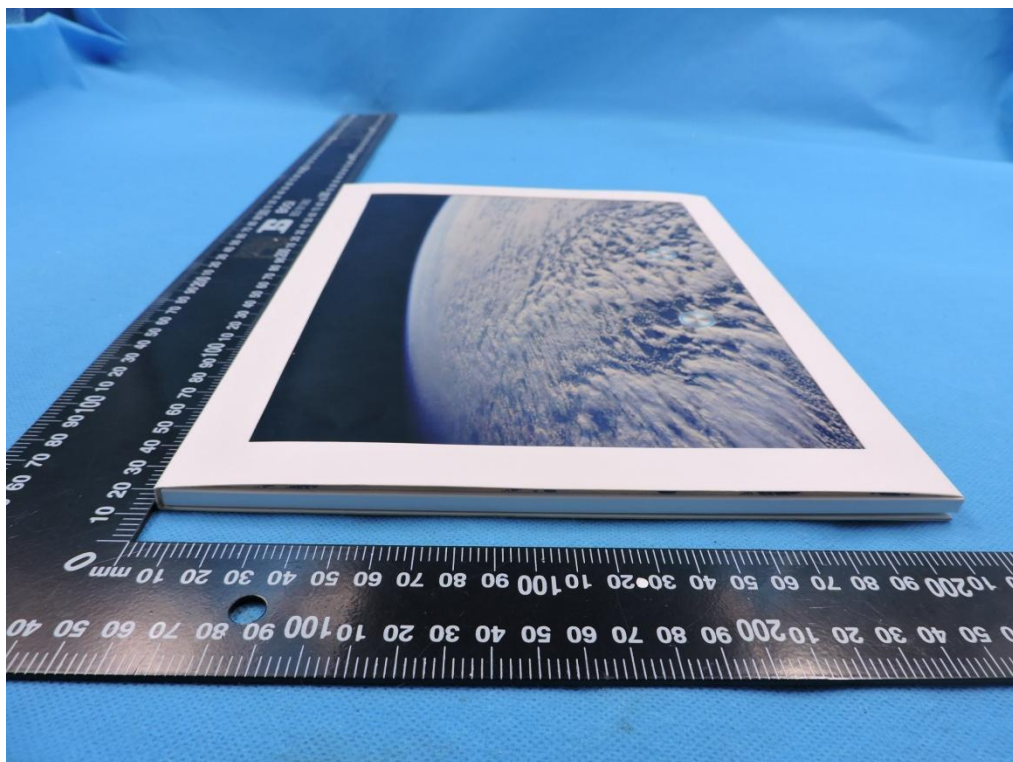
Top side



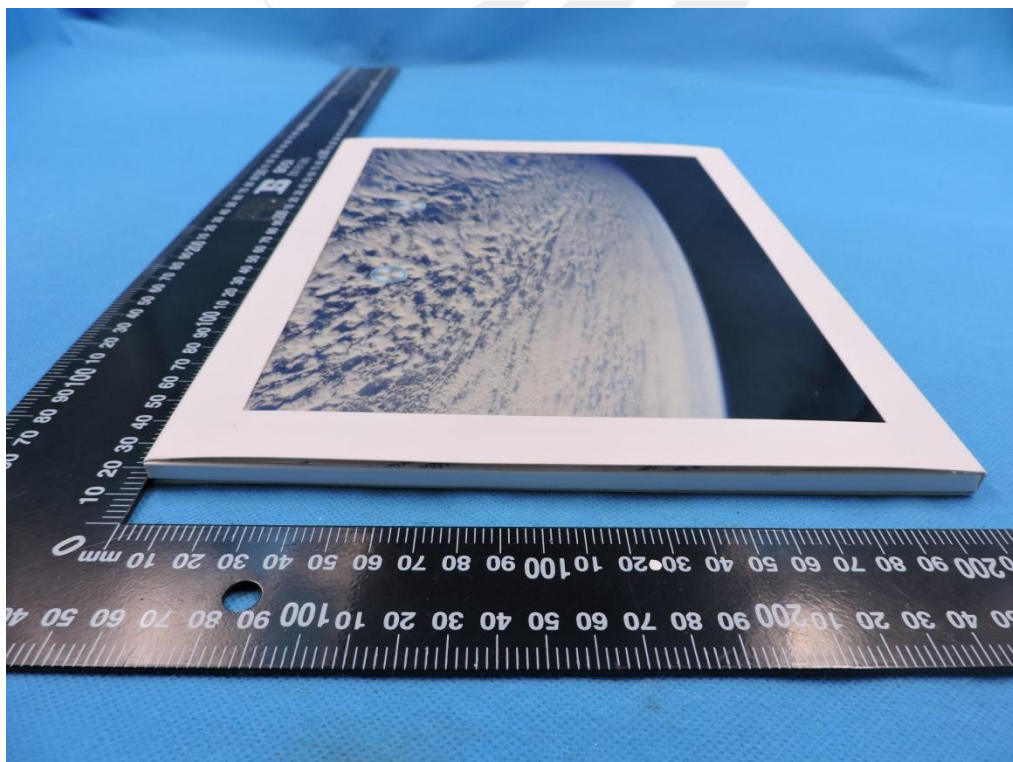
Bottom side



Left side



Right side





Open mode



11.2 Setup Photo

Body Front side(separation distance is 0mm)



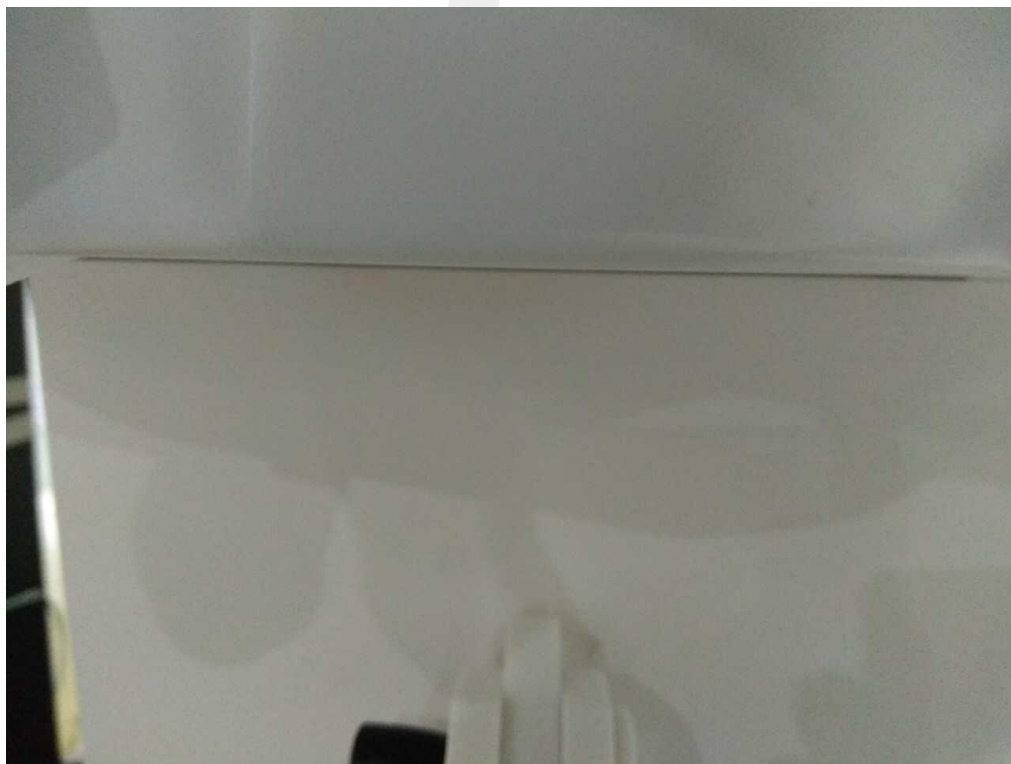
Body Back side(separation distance is 0mm)



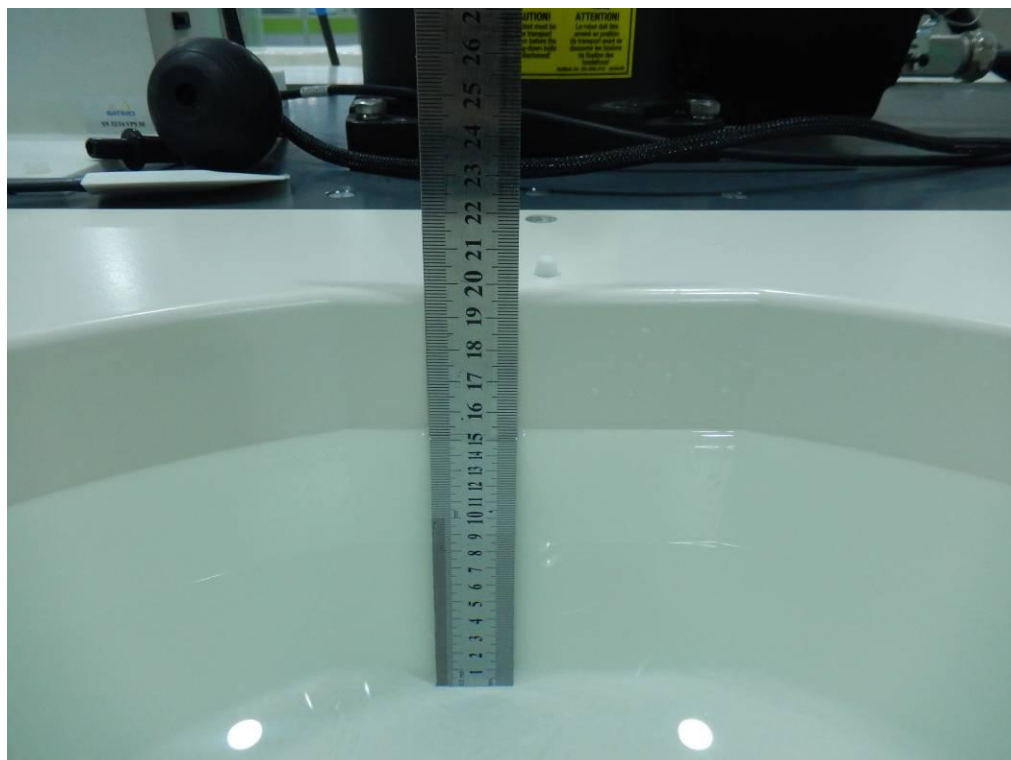
Body right side(separation distance is 0mm)



Body Bottom side(separation distance is 0mm)



Liquid depth (15 cm)





12. SAR Result Summary

12.1 Body-worn

Band	Mode	Test Position	Ch.	Result 1g (W/Kg)	Power Drift(%)	Max.Turn-up Power(dBm)	Meas.Output Power(dBm)	Scaled SAR (W/Kg)	Meas. No.
GSM 850	Voice	Front side	251	0.142	-0.98	29	28.42	0.162	/
		Back side	251	0.261	1.18	29	28.42	0.298	1
		Right side	251	0.086	1.57	29	28.42	0.098	/
		Bottom side	251	0.108	1.52	29	28.42	0.123	/
GSM1900	Voice	Front side	512	0.967	-0.20	25	24.43	1.103	/
		Back side	512	1.169	1.13	25	24.43	1.333	2
		Back side	661	1.007	-1.31	25	24.23	1.202	/
		Back side	810	0.933	1.78	25	24.12	1.143	/
		Right side	512	0.176	-0.95	25	24.43	0.201	/
		Bottom side	512	0.219	-0.72	25	24.43	0.250	/

Note:

- The test separation of all above table is 0mm.
- Per KDB 447498 D01v05r01, the reported SAR is the measured SAR value adjusted for maximum tune-up tolerance.
 - Tune-up scaling Factor = tune-up limit power (mW) / EUT RF power (mW), where tune-up limit is the maximum rated power among all production units.
 - For WWAN: Scaled SAR(W/kg)= Measured SAR(W/kg)*Tune-up Scaling Factor
- Per KDB865664 D01, Repeated measurement is not required when the original highest measured SAR is <0.80 W/kg

Repeated SAR

Band	Mode	Test Position	Channel	Result 1g (W/Kg)	Power Drift(%)	Max.Turn-up Power(dBm)	Meas.Output Power(dBm)	Scaled SAR (W/Kg)	Meas. No.
GSM1900	Voice	Back side	512	1.124	-0.19	25	24.43	1.282	/

11.3 repeated SAR measurement

Band	Mode	Test Position	Channel	Original Measured SAR 1g(mW/g)	1 st Repeated SAR 1g	Ratio	Original Measured SAR 1g(mW/g)	2nd Repeated SAR 1g	Ratio
GSM1900	Voice	Back side	512	1.169	1.124	1.04	/	/	/

Note:

- Per KDB 865664 D01,for each frequency band ,repeated SAR measurement is required only when the measured SAR is ≥ 0.8 W/Kg.
- Per KDB 865664 D01,if the ratio of largest to smallest SAR for the original and first repeated measurement is ≤ 1.2 and the measured SAR < 1.45W/Kg, only one repeated measurement is required.
- Perform a second repeated measurement only if the ratio of largest to smallest SAR for the original and first repeated measurements is > 1.20 or when the original or repeated measurement is ≥ 1.45 W/Kg
- The ratio is the difference in percentage between original and repeated measured SAR.



13. Equipment List

Kind of Equipment	Manufacturer	Type No.	Serial No.	Last Calibration	Calibrated Until
835MHz Dipole	SATIMO	SID835	SN 30/14 DIP0G835-332	2017.08.15	2020.08.14
1900MHz Dipole	SATIMO	SID1900	SN 30/14 DIP1G900-333	2017.08.15	2020.08.14
E-Field Probe	SATIMO	SSE5	SN 14/16 EP309	2016.12.05	2017.12.04
Dielectric Probe Kit	SATIMO	SCLMP	SN 32/14 OCPG67	2016.12.05	2017.12.04
Antenna	SATIMO	ANTA3	SN 07/13 ZNTA52	N/A	N/A
Phantom1	SATIMO	SAM	SN 32/14 SAM115	2014.09.01	N/A
Phantom2	SATIMO	SAM	SN 32/14 SAM116	2014.09.01	N/A
Phone holder	SATIMO	N/A	SN 32/14 MSH97	2014.09.01	N/A
Laptop holder	SATIMO	N/A	SN 32/14 LSH29	2014.09.01	N/A
Network Analyzer	Agilent	8753ES	US38432810	2017.03.16	2018.03.15
Multi Meter	Keithley	Multi Meter 2000	4050073	2016.10.23	2017.10.22
Signal Generator	Agilent	N5182A	MY50140530	2016.10.23	2017.10.22
Wireless Communication Test Set	Agilent	8960-E5515C	MY48360751	2016.10.23	2017.10.22
Power Amplifier	DESAY	ZHL-42W	9638	2016.10.23	2017.10.22
Power Meter	R&S	NRP	100510	2016.10.23	2017.10.22
Power Meter	Agilent	E4418B	GB43312526	2016.10.23	2017.10.22
Power Sensor	R&S	NRP-Z11	101919	2016.10.23	2017.10.22
Power Sensor	Agilent	E9301A	MY41497725	2016.10.23	2017.10.22
9dB Attenuator	Agilent	99899	DC-18GHz	2017.05.10	2018.05.09
11dB Attenuator	Agilent	8494B	DC-18GHz	2017.05.10	2018.05.09
110dB Attenuator	Agilent	8494B	DC-18GHz	2017.05.10	2018.05.09
Dual Directional Coupler	Agilent	SHWPD1- 1080S	N/A	2017.05.09	2018.05.08
Temperature & Humidity	MiEO	HH660	N/A	2016.10.25	2017.10.24



Appendix A. System Validation Plots

System Performance Check Data (835MHz Body)

Type: Phone measurement (Complete)

Area scan resolution: dx=8mm,dy=8mm

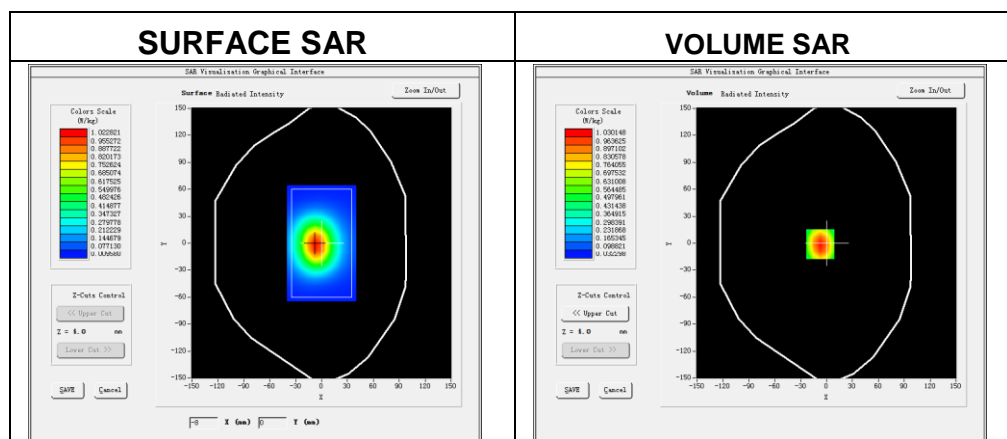
Zoom scan resolution: dx=8mm, dy=8mm, dz=5mm

Date of measurement: 2017-09-20

Measurement duration: 14 minutes 13 seconds

Experimental conditions.

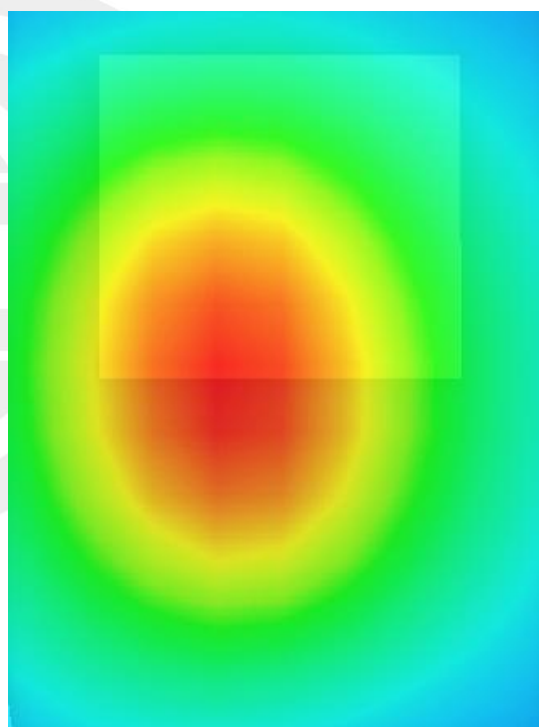
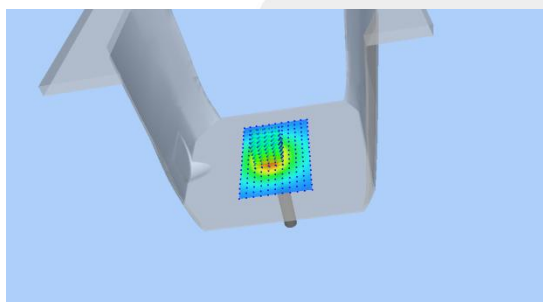
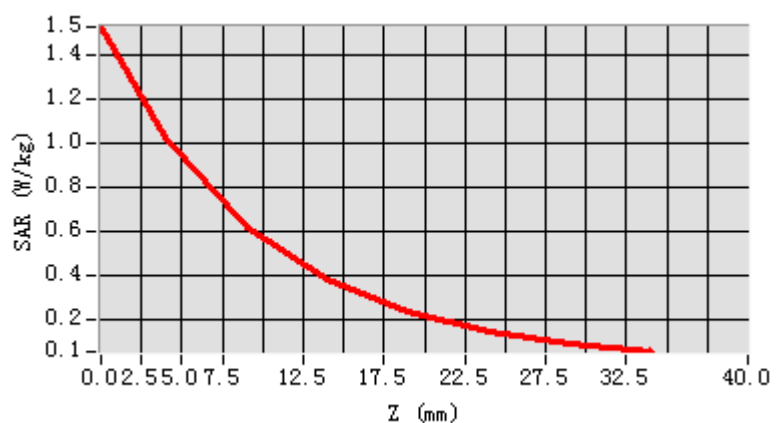
Probe	
Phantom	Validation plane
Device Position	-
Band	835MHz
Channels	-
Signal	CW
Frequency (MHz)	835MHz
Relative permittivity	55.46
Conductivity (S/m)	0.95
Power drift (%)	1.34
Probe	SN 14/16 EP309
ConvF:	5.90
Crest factor:	1:1



Maximum location: X=-7.00, Y=-1.00

SAR 10g (W/Kg)	0.658753
SAR 1g (W/Kg)	0.969237

Z Axis Scan



**System Performance Check Data (1900MHz Body)**

Type: Phone measurement (Complete)

Area scan resolution: dx=8mm,dy=8mm

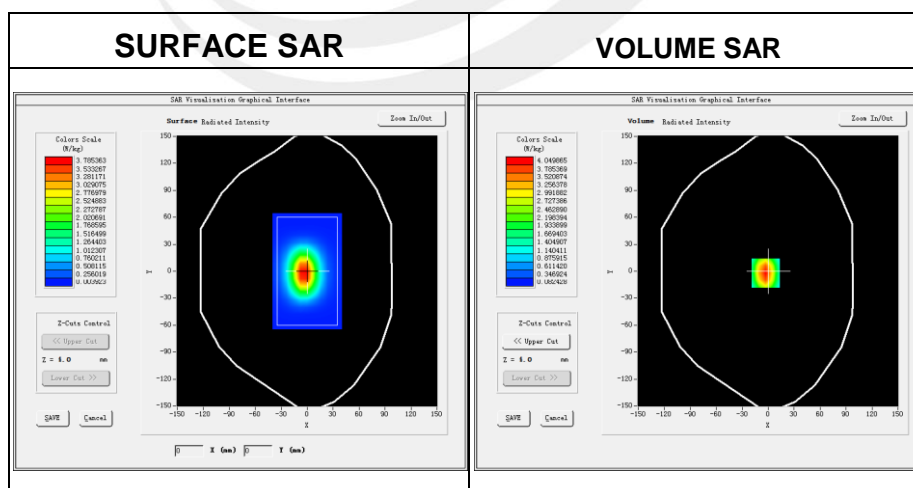
Zoom scan resolution: dx=8mm, dy=8mm, dz=5mm

Date of measurement: 2017-09-20

Measurement duration: 14 minutes 46 seconds

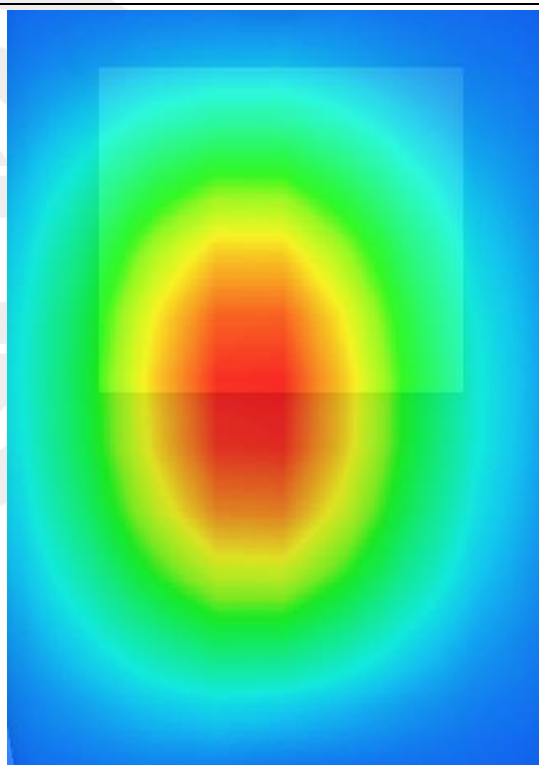
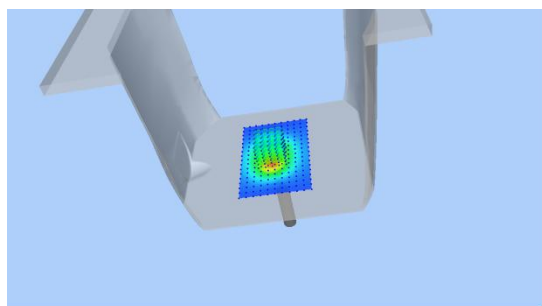
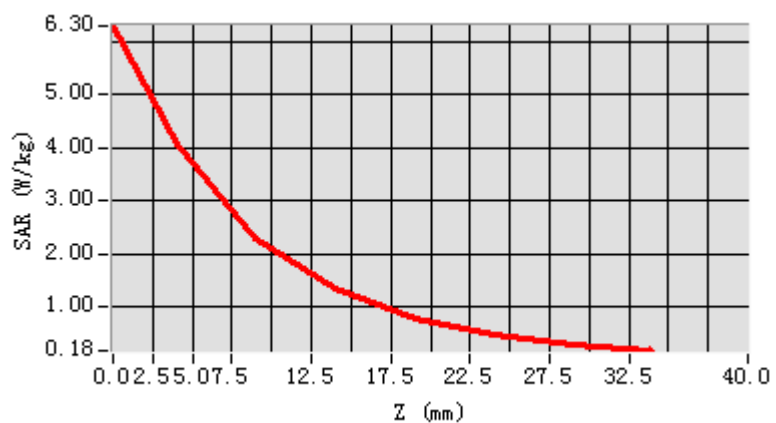
Experimental conditions.

Device Position	-
Band	1900MHz
Channels	-
Signal	CW
Frequency (MHz)	1900
Relative permittivity	52.02
Conductivity (S/m)	1.55
Power drift (%)	-0.10
Probe	SN 14/16 EP309
ConvF:	5.67
Crest factor:	1:1

**Maximum location: X=-3.00, Y=-2.00**

SAR 10g (W/Kg)	2.147269
SAR 1g (W/Kg)	4.050049

Z Axis Scan



Appendix B. SAR Test Plots

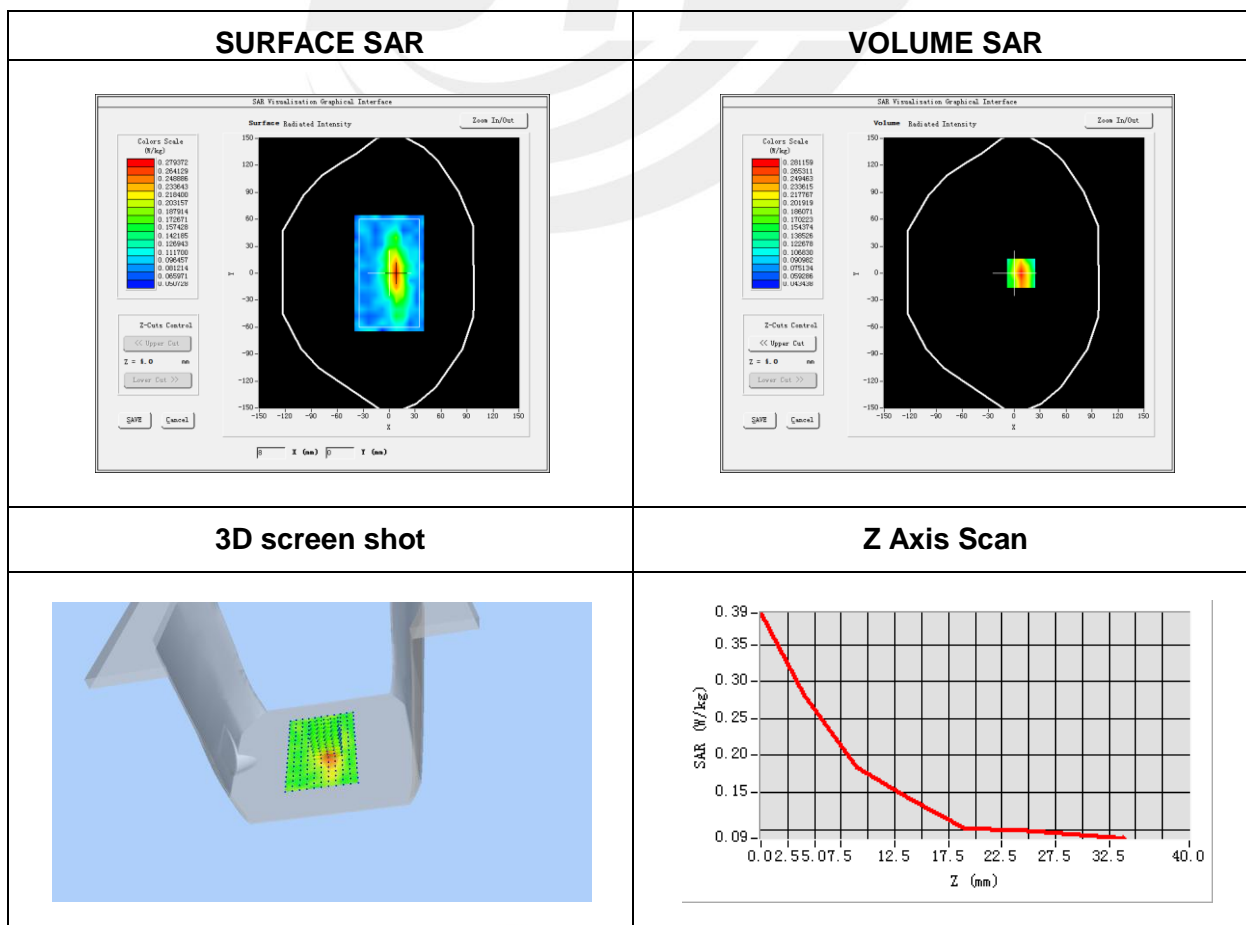
Plot 1 DUT: Call Button; EUT Model: Call Button with LED lights

Test Date	2017-09-20
Probe	SN 14/16 EP309
ConvF	5.90
Area Scan	dx=8mm dy=8mm, h= 5.00 mm
ZoomScan	5x5x7,dx=8mm dy=8mm dz=5mm, Complete/ndx=8mm dy=8mm, h= 5.00 mm
Phantom	Validation plane
Device Position	Body back side
Band	GSM 850
Channels	High
Signal	TDMA (Crest factor: 8.32)
Frequency (MHz)	848.8
Relative permittivity (real part)	55.20
Conductivity (S/m)	0.97
Variation (%)	1.18

Maximum location: X=8.00, Y=0.00

SAR Peak: 0.41 W/Kg

SAR 10g (W/Kg)	0.165406
SAR 1g (W/Kg)	0.260793



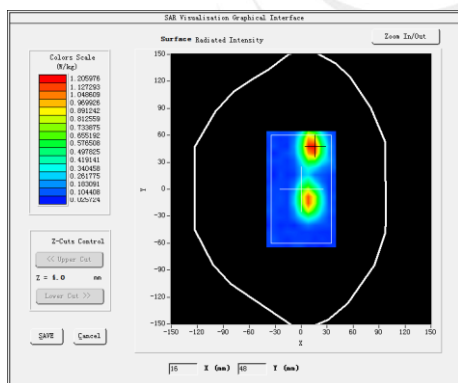
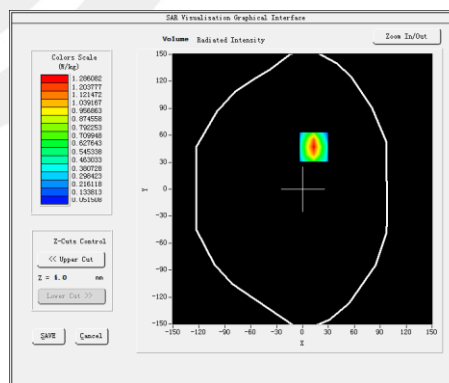
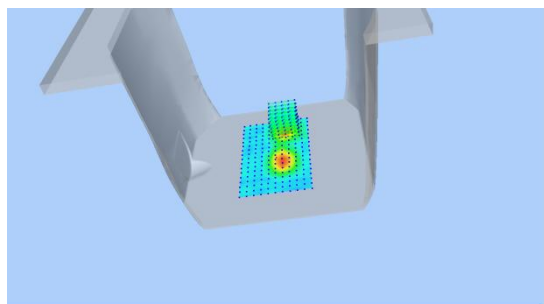
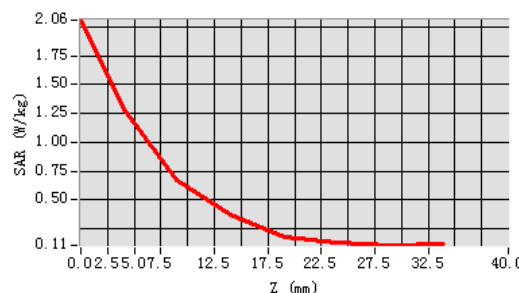
Plot 2 DUT: Call Button; EUT Model: Call Button with LED lights

Test Date	2017-09-20
Probe	SN 14/16 EP309
ConvF	5.67
Area Scan	dx=8mm dy=8mm, h= 5.00 mm
ZoomScan	5x5x7,dx=8mm dy=8mm dz=5mm, Complete/ndx=8mm dy=8mm, h= 5.00 mm
Phantom	Validation plane
Device Position	Body back side
Band	GSM 1900
Channels	Low
Signal	TDMA (Crest factor: 8.32)
Frequency (MHz)	1850.2
Relative permittivity (real part)	53.30
Conductivity (S/m)	1.52
Variation (%)	1.13

Maximum location: X=13.00, Y=47.00

SAR Peak:2.17 W/Kg

SAR 10g (W/Kg)	0.557805
SAR 1g (W/Kg)	1.169212

SURFACE SAR

VOLUME SAR

3D screen shot

Z Axis Scan




Appendix C. Probe Calibration And Dipole Calibration Report

Refer the appendix Calibration Report.

※※※※END OF THE REPORT※※※※

