
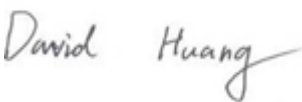



# RF TEST REPORT



Report No.: 17071411 -FCC-R2

Supersede Report No.: N/A

Applicant	Kygo Life AS	
Product Name	Bluetooth Headset	
Model No.	A6-500	
Serial No.	N/A	
Test Standard	FCC Part 15.247: 2016, ANSI C63.10: 2013	
Test Date	December 13, 2017 to February 01, 2018	
Issue Date	February 02, 2018	
Test Result	<input checked="" type="checkbox"/> Pass <input type="checkbox"/> Fail	
Equipment complied with the specification <input checked="" type="checkbox"/>		
Equipment did not comply with the specification <input type="checkbox"/>		
		
Aaron Liang Test Engineer	David Huang Checked By	
This test report may be reproduced in full only Test result presented in this test report is applicable to the tested sample only		

Issued by:

**SIEMIC (SHENZHEN-CHINA) LABORATORIES**

Zone A, Floor 1, Building 2 Wan Ye Long Technology Park

South Side of Zhoushi Road, Bao' an District, Shenzhen, Guangdong China 518108

Phone: +86 0755 2601 4629801 Email: [China@siemic.com.cn](mailto:China@siemic.com.cn)

## Laboratories Introduction

SIEMIC, headquartered in the heart of Silicon Valley, with superior facilities in US and Asia, is one of the leading independent testing and certification facilities providing customers with one-stop shop services for Compliance Testing and Global Certifications.



In addition to testing and certification, SIEMIC provides initial design reviews and compliance management throughout a project. Our extensive experience with China, Asia Pacific, North America, European, and International compliance requirements, assures the fastest, most cost effective way to attain regulatory compliance for the global markets.

### Accreditations for Conformity Assessment

Country/Region	Scope
USA	EMC, RF/Wireless, SAR, Telecom
Canada	EMC, RF/Wireless, SAR, Telecom
Taiwan	EMC, RF, Telecom, SAR, Safety
Hong Kong	RF/Wireless, SAR, Telecom
Australia	EMC, RF, Telecom, SAR, Safety
Korea	EMI, EMS, RF, SAR, Telecom, Safety
Japan	EMI, RF/Wireless, SAR, Telecom
Singapore	EMC, RF, SAR, Telecom
Europe	EMC, RF, SAR, Telecom, Safety

Test Report No.	17071411-FCC-R2
Page	3 of 47

This page has been left blank intentionally.

## CONTENTS

1. REPORT REVISION HISTORY .....	5
2. CUSTOMER INFORMATION.....	5
3. TEST SITE INFORMATION .....	5
4. EQUIPMENT UNDER TEST (EUT) INFORMATION .....	6
5. TEST SUMMARY .....	7
6. MEASUREMENTS, EXAMINATION AND DERIVED RESULTS.....	8
6.1 ANTENNA REQUIREMENT .....	8
6.2 DTS (6 DB) CHANNEL BANDWIDTH .....	9
6.3 MAXIMUM OUTPUT POWER.....	11
6.4 POWER SPECTRAL DENSITY .....	13
6.5 BAND-EDGE & UNWANTED EMISSIONS INTO RESTRICTED FREQUENCY BANDS .....	15
6.6 AC POWER LINE CONDUCTED EMISSIONS.....	18
6.7 RADIATED EMISSIONS & RESTRICTED BAND.....	24
ANNEX A. TEST INSTRUMENT .....	31
ANNEX B. EUT AND TEST SETUP PHOTOGRAPHS.....	32
ANNEX C. TEST SETUP AND SUPPORTING EQUIPMENT.....	42
ANNEX D. USER MANUAL / BLOCK DIAGRAM / SCHEMATICS / PARTLIST .....	46
ANNEX E. DECLARATION OF SIMILARITY .....	47

## 1. Report Revision History

Report No.	Report Version	Description	Issue Date
17071411 -FCC-R2	NONE	Original	February 02, 2018

## 2. Customer information

Applicant Name	Kygo Life AS
Applicant Add	Sjoyst Plass 3, 0278 Oslo ,Norway a
Manufacturer	ASKA Electronics Co., Ltd.
Manufacturer Add	3F,building 19#,Road Da Ling Bian, Shahu Community,Tangxia Town,Dongguan, China

## 3. Test site information

Test Lab A:

Lab performing tests	SIEMIC (Shenzhen-China) LABORATORIES
Lab Address	Zone A, Floor 1, Building 2 Wan Ye Long Technology Park South Side of Zhoushi Road, Bao' an District, Shenzhen, Guangdong China 518108
FCC Test Site No.	535293
IC Test Site No.	4842E-1
Test Software	Radiated Emission Program-To Shenzhen v2.0

Test Lab B:

Lab performing tests	SIEMIC (Nanjing-China) Laboratories
Lab Address	2-1 Longcang Avenue Yuhua Economic and Technology Development Park, Nanjing, China
FCC Test Site No.	694825
IC Test Site No.	4842B-1
Test Software	EZ_EMG(ver.lcp-03A1)

Note: We just perform Radiated Spurious Emission above 18GHz in the test Lab. B

## 4. Equipment under Test (EUT) Information

Description of EUT:	Bluetooth Headset
Main Model:	A6-500
Serial Model:	N/A
Date EUT received:	December 13, 2017
Test Date(s):	December 13, 2017 to February 01, 2018
Equipment Category :	DTS
Antenna Gain:	Bluetooth/BLE: 2.0dBi
Antenna Type:	PCB antenna
Type of Modulation:	Bluetooth: GFSK, $\pi/4$ DQPSK, 8DPSK BLE: GFSK
RF Operating Frequency (ies):	Bluetooth& BLE: 2402-2480 MHz
Max. Output Power:	8.591dBm
Number of Channels:	Bluetooth: 79CH BLE: 40CH
Port:	USB Port, earphone Port
Trade Name :	KYGO
Input Power:	Battery Spec: 3.7V, 200mAh
FCC ID:	2AN0XA6

## 5. Test Summary

The product was tested in accordance with the following specifications.

All testing has been performed according to below product classification:

FCC Rules	Description of Test	Result
§15.203	Antenna Requirement	Compliance
§15.247 (a)(2)	DTS (6 dB) CHANNEL BANDWIDTH	Compliance
§15.247(b)(3)	Conducted Maximum Output Power	Compliance
§15.247(e)	Power Spectral Density	Compliance
§15.247(d)	Band-Edge & Unwanted Emissions into Restricted Frequency Bands	Compliance
§15.207 (a),	AC Power Line Conducted Emissions	Compliance
§15.205, §15.209, §15.247(d)	Radiated Emissions & Unwanted Emissions into Restricted Frequency Bands	Compliance

### Measurement Uncertainty

Emissions		
Test Item	Description	Uncertainty
Band-Edge & Unwanted Emissions into Restricted Frequency Bands and Radiated Emissions & Unwanted Emissions into Restricted Frequency Bands	Confidence level of approximately 95% (in the case where distributions are normal), with a coverage factor of 2 (for EUTs < 0.5m X 0.5m X 0.5m)	+5.6dB/-4.5dB
-	-	-

## 6. Measurements, Examination And Derived Results

### 6.1 Antenna Requirement

#### **Applicable Standard**

According to § 15.203, an intentional radiator shall be designed to ensure that no antenna other than that furnished by the responsible party shall be used with the device. The use of a permanently attached antenna or of an antenna that uses a unique coupling to the intentional radiator shall be considered sufficient to comply with the provisions of this section. The manufacturer may design the unit so that a broken antenna can be replaced by the user, but the user of a standard antenna jack or electrical connector is prohibited. The structure and application of the EUT were analyzed to determine compliance with section §15.203 of the rules. §15.203 state that the subject device must meet the following criteria:

- a. Antenna must be permanently attached to the unit.
- b. Antenna must use a unique type of connector to attach to the EUT.

Unit must be professionally installed, and installer shall be responsible for verifying that the correct antenna is employed with the unit.

And according to FCC 47 CFR section 15.247 (b), if the transmitting antennas of directional gain greater than 6dBi are used, the power shall be reduced by the amount in dB that the directional gain of the antenna exceeds 6 dBi.

#### **Antenna Connector Construction**

The EUT has 1 antenna:

A permanently attached monopole antenna for Bluetooth/BLE, the gain is 2.0dBi for Bluetooth/BLE.

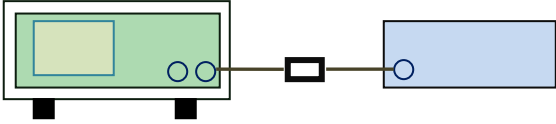
**The antenna meets up with the ANTENNA REQUIREMENT.**

**Result:** Compliance.



## 6.2 DTS (6 dB) Channel Bandwidth

Temperature	27 °C
Relative Humidity	55%
Atmospheric Pressure	1023mbar
Test date :	January 22, 2018
Tested By :	Aaron Liang

Spec	Item	Requirement	Applicable
§ 15.247(a)(2)	a)	6dB BW ≥ 500kHz;	<input checked="" type="checkbox"/>
RSS Gen(4.6.1)	b)	99% BW: For FCC reference only; required by IC.	<input checked="" type="checkbox"/>
Test Setup	 <p style="text-align: center;">Spectrum Analyzer                      EUT</p>		
Test Procedure	<p>558074 D01 DTS MEAS Guidance v03r03, 8.1 DTS bandwidth 6dB Emission bandwidth measurement procedure</p> <ul style="list-style-type: none"> <li>- Set RBW = 100 kHz.</li> <li>- Set the video bandwidth (VBW) ≥ 3 RBW.</li> <li>- Detector = Peak.</li> <li>- Trace mode = max hold.</li> <li>- Sweep = auto couple.</li> <li>- Allow the trace to stabilize.</li> </ul> <p>Measure the maximum width of the emission that is constrained by the frequencies associated with the two outermost amplitude points (upper and lower frequencies) that are attenuated by 6 dB relative to the maximum level measured in the fundamental emission.</p>		
Remark			
Result	<input checked="" type="checkbox"/> Pass <input type="checkbox"/> Fail		

Test Data    ☒ Yes                      ☐ N/A

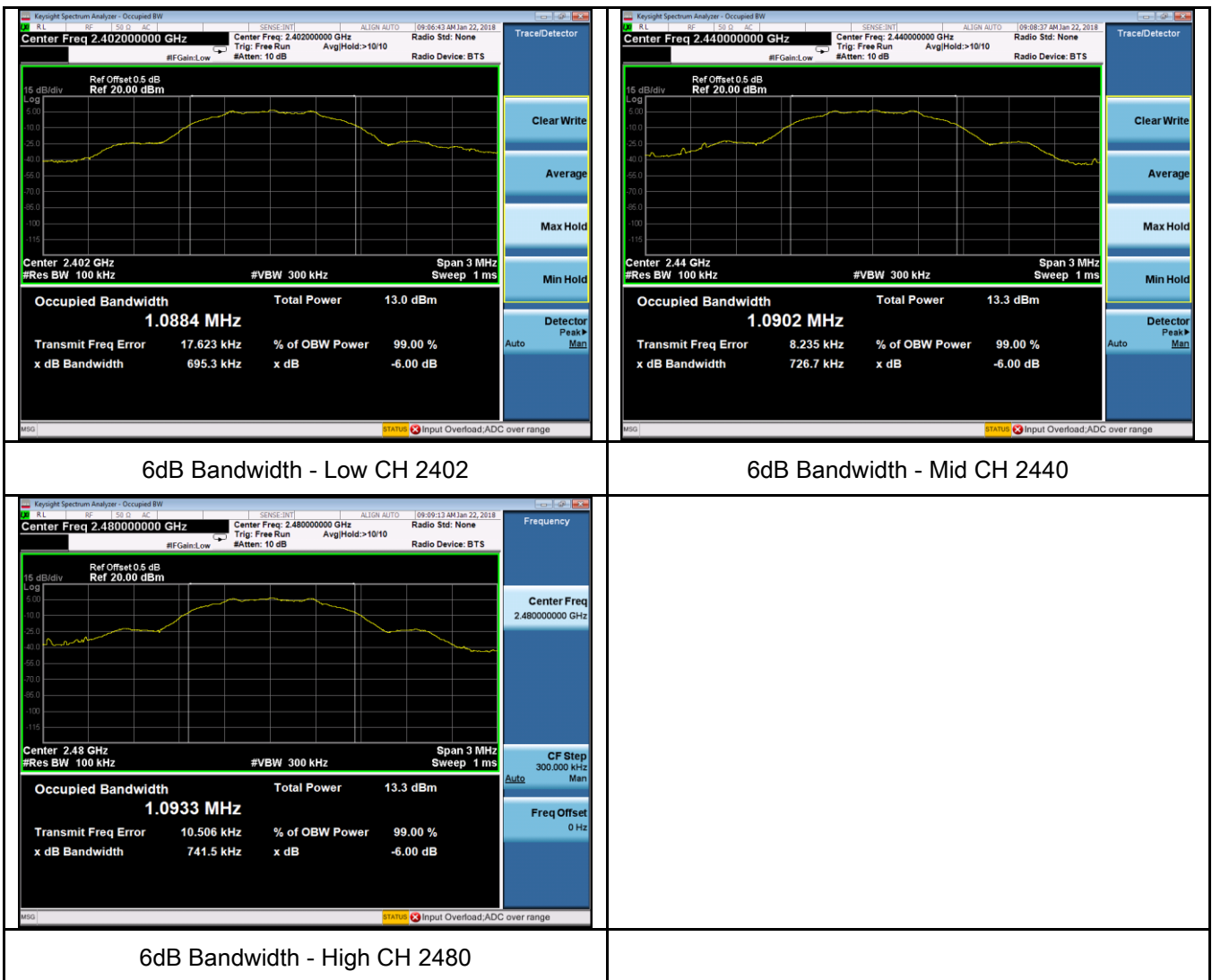
Test Plot    ☒ Yes (See below)                      ☐ N/A

## 6dB Bandwidth measurement result

### Test Data

CH	Frequency (MHz)	6dB Bandwidth (kHz)	99% Occupied Bandwidth (MHz)
Low	2402	695.3	1.0884
Mid	2440	726.7	1.0902
High	2480	741.5	1.0933

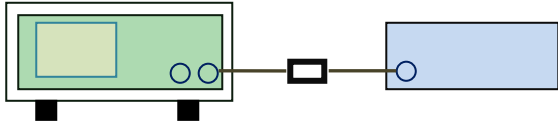
### Test Plots



### 6.3 Maximum Output Power

Temperature	27 °C
Relative Humidity	55%
Atmospheric Pressure	1023mbar
Test date :	January 22, 2018
Tested By :	Aaron Liang

#### Requirement(s):

Spec	Item	Requirement	Applicable
§15.247(b) (3),RSS210 (A8.4)	a)	FHSS in 2400-2483.5MHz with $\geq 75$ channels: $\leq 1$ Watt	<input type="checkbox"/>
	b)	FHSS in 5725-5850MHz: $\leq 1$ Watt	<input type="checkbox"/>
	c)	For all other FHSS in the 2400-2483.5MHz band: $\leq 0.125$ Watt.	<input type="checkbox"/>
	d)	FHSS in 902-928MHz with $\geq 50$ channels: $\leq 1$ Watt	<input type="checkbox"/>
	e)	FHSS in 902-928MHz with $\geq 25$ & $<50$ channels: $\leq 0.25$ Watt	<input type="checkbox"/>
	f)	DTS in 902-928MHz, 2400-2483.5MHz: $\leq 1$ Watt	<input checked="" type="checkbox"/>
Test Setup	 <p style="text-align: center;">Spectrum Analyzer                      EUT</p>		
Test Procedure	<p>558074 D01 DTS MEAS Guidance v03r03, 9.1.2 Integrated band power method Maximum output power measurement procedure</p> <p>a) Set the RBW <math>\geq</math> DTS bandwidth. b) Set VBW <math>\geq 3 \times</math> RBW. c) Set span <math>\geq 3 \times</math> RBW d) Sweep time = auto couple. e) Detector = peak. f) Trace mode = max hold. g) Allow trace to fully stabilize. h) Use peak marker function to determine the peak amplitude level.</p>		
Remark			
Result	<input checked="" type="checkbox"/> Pass <input type="checkbox"/> Fail		

Test Data ☒ Yes ☐ N/A

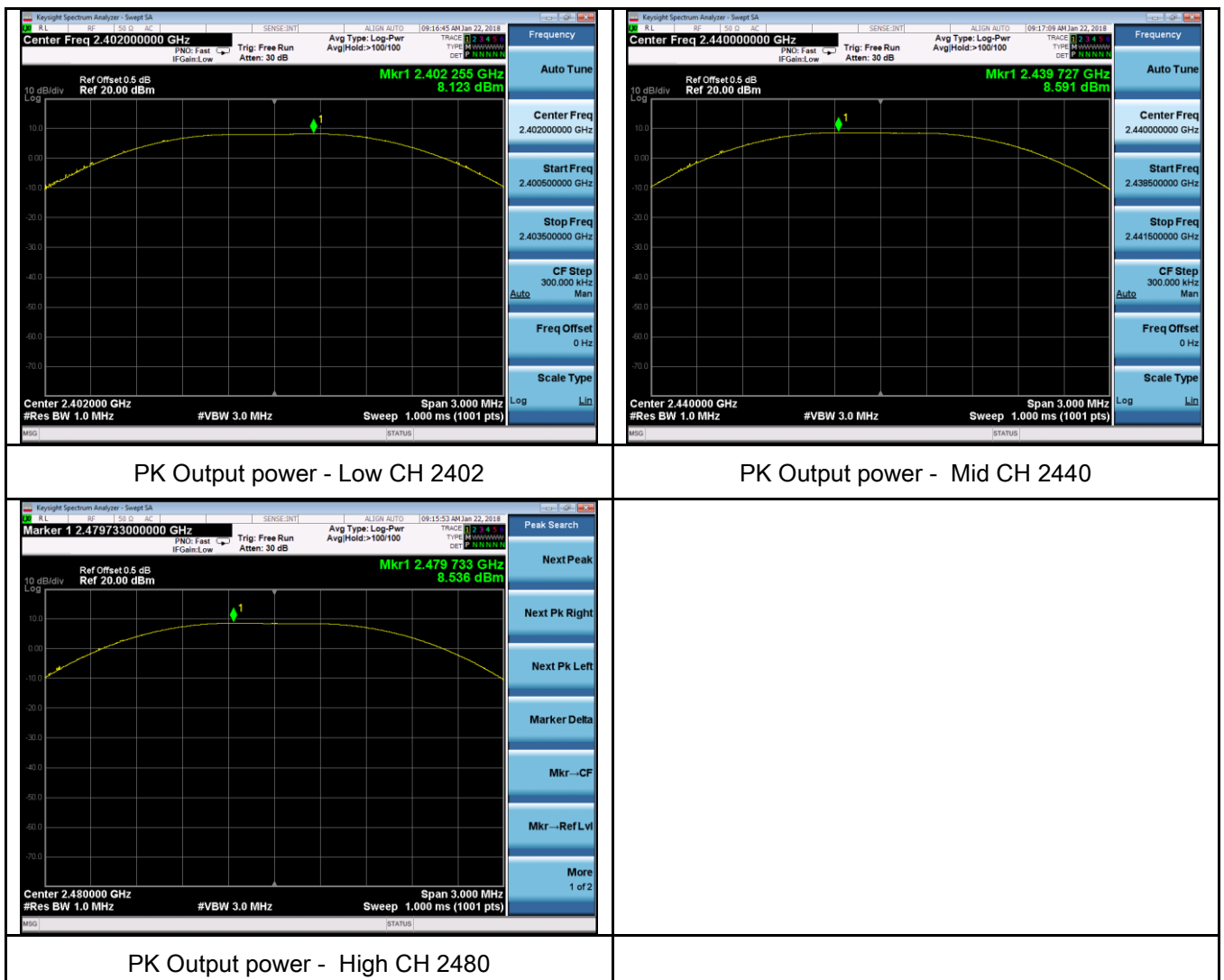
Test Plot ☒ Yes (See below) ☐ N/A

## Output Power measurement result

### Test Data

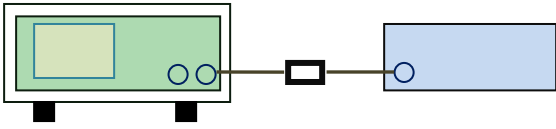
Type	CH	Frequency (MHz)	Conducted Power (dBm)	Limit (dBm)	Result
Output power	Low	2402	8.123	30	Pass
	Mid	2440	8.591	30	Pass
	High	2480	8.536	30	Pass

### Test Plots



## 6.4 Power Spectral Density

Temperature	27 °C
Relative Humidity	55%
Atmospheric Pressure	1023mbar
Test date :	January 22, 2018
Tested By :	Aaron Liang

Spec	Item	Requirement	Applicable
§15.247(e)	a)	The power spectral density conducted from the intentional radiator to the antenna shall not be greater than 8 dBm in any 3 kHz band during any time interval of continuous transmission.	<input checked="" type="checkbox"/>
Test Setup	 <p style="text-align: center;">Spectrum Analyzer                      EUT</p>		
Test Procedure	<p>558074 D01 DTS MEAS Guidance v03r03, 10.2 power spectral density method power spectral density measurement procedure</p> <ul style="list-style-type: none"> <li>- a) Set analyzer center frequency to DTS channel center frequency.</li> <li>- b) Set the span to 1.5 times the DTS bandwidth.</li> <li>- c) Set the RBW to: <math>3 \text{ kHz} \leq \text{RBW} \leq 100 \text{ kHz}</math>.</li> <li>- d) Set the VBW <math>\geq 3 \times \text{RBW}</math>.</li> <li>- e) Detector = peak.</li> <li>- f) Sweep time = auto couple.</li> <li>- g) Trace mode = max hold.</li> <li>- h) Allow trace to fully stabilize.</li> <li>- i) Use the peak marker function to determine the maximum amplitude level within the RBW.</li> <li>- j) If measured value exceeds limit, reduce RBW (no less than 3 kHz) and repeat.</li> </ul>		
Remark			
Result	<input checked="" type="checkbox"/> Pass <input type="checkbox"/> Fail		

Test Data ☒ Yes                      ☐ N/A  
 Test Plot ☒ Yes (See below)                      ☐ N/A

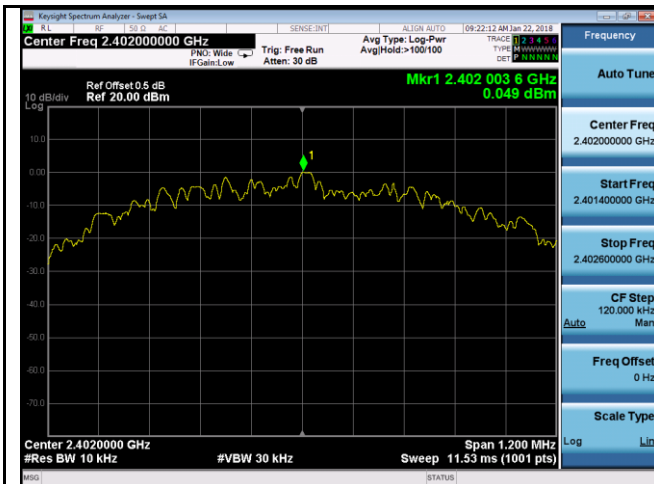
## Power Spectral Density measurement result

### Test Data

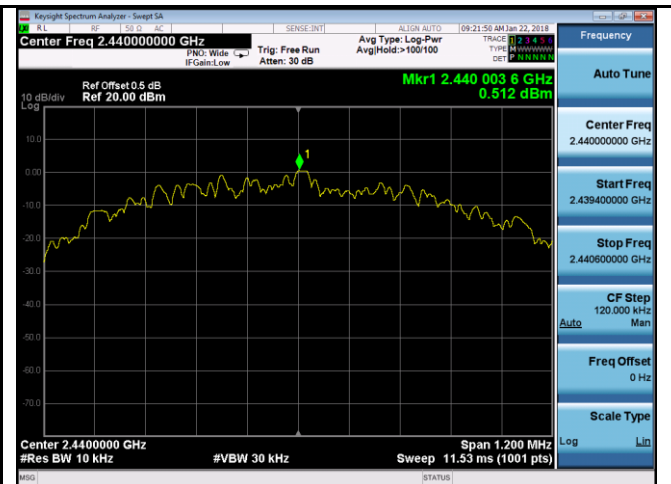
Type	CH	Freq (MHz)	Reading (dBm)	Factor (dB)	Result (dBm)	Limit (dBm)	Result
PSD	Low	2402	0.049	-5.23	-5.181	8	Pass
	Mid	2440	0.512	-5.23	-4.718	8	Pass
	High	2480	0.514	-5.23	-4.716	8	Pass

Note: factor= $10\log(3/10)=-5.23$

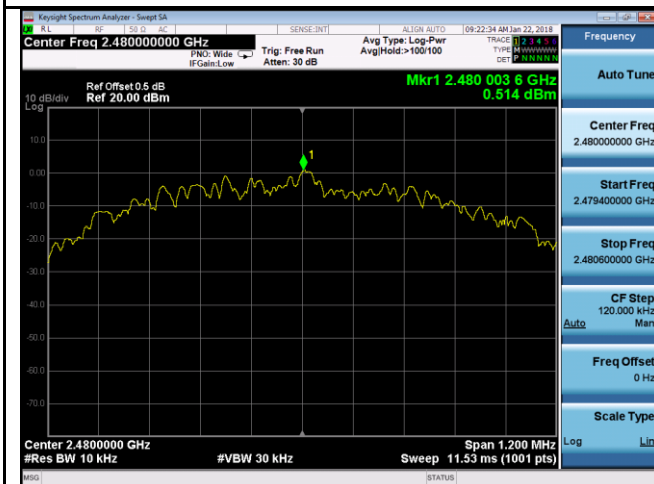
### Test Plots



PSD - Low CH 2402



PSD - Mid CH 2440

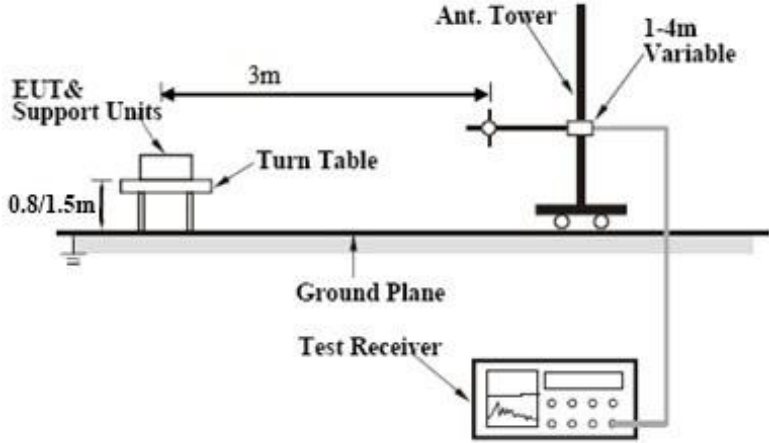


PSD - High CH 2480

## 6.5 Band-Edge & Unwanted Emissions into Restricted Frequency Bands

Temperature	27 °C
Relative Humidity	55%
Atmospheric Pressure	1023mbar
Test date :	January 22, 2018
Tested By :	Aaron Liang

### Requirement(s):

Spec	Item	Requirement	Applicable
§15.247(d)	a)	In any 100 kHz bandwidth outside the frequency band in which the spread spectrum or digitally modulated intentional radiator is operating, the radio frequency power that is produced by the intentional radiator shall be at least 20 dB below that in the 100 kHz bandwidth within the band that contains the highest level of the desired power, based on either an RF conducted or a radiated measurement, provided the transmitter demonstrates compliance with the peak conducted power limits.	<input checked="" type="checkbox"/>
Test Setup			
Test Procedure	<p>Radiated Method Only</p> <ul style="list-style-type: none"> <li>1. Check the calibration of the measuring instrument using either an internal calibrator or a known signal from an external generator.</li> <li>2. Position the EUT without connection to measurement instrument. Put it on the Rotated table and turn on the EUT and make it operate in transmitting mode. Then set it to Low Channel and High Channel within its operating range, and make sure the instrument is operated in its linear range.</li> </ul>		

Test Report No.	17071411-FCC-R2
Page	16 of 47

	<ul style="list-style-type: none"> <li>- 3. First, set both RBW and VBW of spectrum analyzer to 100 kHz with a convenient frequency span including 100kHz bandwidth from band edge, check the emission of EUT, if pass then set Spectrum Analyzer as below: <ul style="list-style-type: none"> <li>a. The resolution bandwidth and video bandwidth of test receiver/spectrum analyzer is 120 kHz for Quasiy Peak detection at frequency below 1GHz.</li> <li>b. The resolution bandwidth of test receiver/spectrum analyzer is 1MHz and video bandwidth is 3MHz with Peak detection for Peak measurement at frequency above 1GHz.</li> <li>c. The resolution bandwidth of test receiver/spectrum analyzer is 1MHz and the video bandwidth is 10Hz with Peak detection for Average Measurement as below at frequency above 1GHz.</li> </ul> </li> <li>- 4. Measure the highest amplitude appearing on spectral display and set it as a reference level. Plot the graph with marking the highest point and edge frequency.</li> <li>- 5. Repeat above procedures until all measured frequencies were complete.</li> </ul>
Remark	
Result	<input checked="" type="checkbox"/> Pass <input type="checkbox"/> Fail

Test Data    ☐ Yes                      ☒ N/A  
Test Plot    ☒ Yes (See below)           ☐ N/A



## Test Plots

### Band Edge measurement result



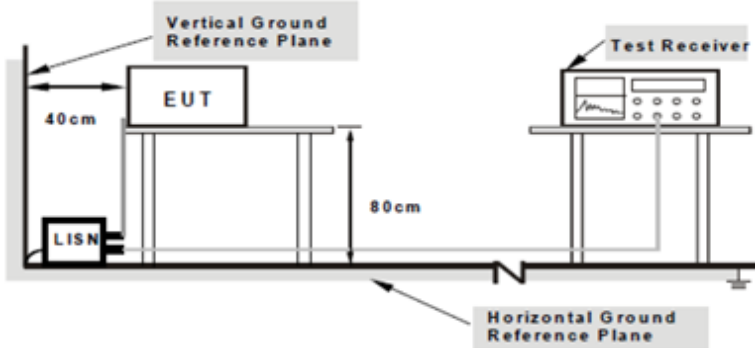
Note: Both Horizontal and vertical polarities were investigated.

## 6.6 AC Power Line Conducted Emissions

Temperature	24 °C
Relative Humidity	55%
Atmospheric Pressure	1008mbar
Test date :	December 13, 2017
Tested By :	Aaron Liang

### Requirement(s):

Spec	Item	Requirement	Applicable														
47CFR§15.207, RSS210 (A8.1)	a)	For Low-power radio-frequency devices that is designed to be connected to the public utility (AC) power line, the radio frequency voltage that is conducted back onto the AC power line on any frequency or frequencies, within the band 150 kHz to 30 MHz, shall not exceed the limits in the following table, as measured using a 50 [mu] H/50 ohms line impedance stabilization network (LISN). The lower limit applies at the boundary between the frequencies ranges.	<div><input checked="" type="checkbox"/></div>														
		<table><tr><th rowspan="2">Frequency ranges (MHz)</th><th colspan="2">Limit (dBµV)</th></tr><tr><th>QP</th><th>Average</th></tr><tr><td>0.15 ~ 0.5</td><td>66 – 56</td><td>56 – 46</td></tr><tr><td>0.5 ~ 5</td><td>56</td><td>46</td></tr><tr><td>5 ~ 30</td><td>60</td><td>50</td></tr></table>		Frequency ranges (MHz)	Limit (dBµV)		QP	Average	0.15 ~ 0.5	66 – 56	56 – 46	0.5 ~ 5	56	46	5 ~ 30	60	50
		Frequency ranges (MHz)			Limit (dBµV)												
				QP	Average												
		0.15 ~ 0.5		66 – 56	56 – 46												
		0.5 ~ 5		56	46												
5 ~ 30	60	50															

Test Setup	 <p>The diagram illustrates the test setup. A Unit Under Test (EUT) is placed on a table. To its left, a Line Impedance Stabilization Network (LISN) is connected to the power line. A vertical ground reference plane is positioned 40 cm from the EUT. A horizontal ground reference plane is positioned 80 cm from the EUT. A Test Receiver is connected to the LISN. A note specifies: 'Note: 1. Support units were connected to second LISN. 2. Both of LISNs (AMN) are 80cm from EUT and at least 80cm from other units and other metal planes support units.'</p>
------------	--

Procedure	<ol style="list-style-type: none"> <li>The EUT and supporting equipment were set up in accordance with the requirements of the standard on top of a 1.5m x 1m x 0.8m high, non-metallic table.</li> <li>The power supply for the EUT was fed through a 50W/50mH EUT LISN, connected to filtered mains.</li> <li>The RF OUT of the EUT LISN was connected to the EMI test receiver via a low-loss</li> </ol>
-----------	---

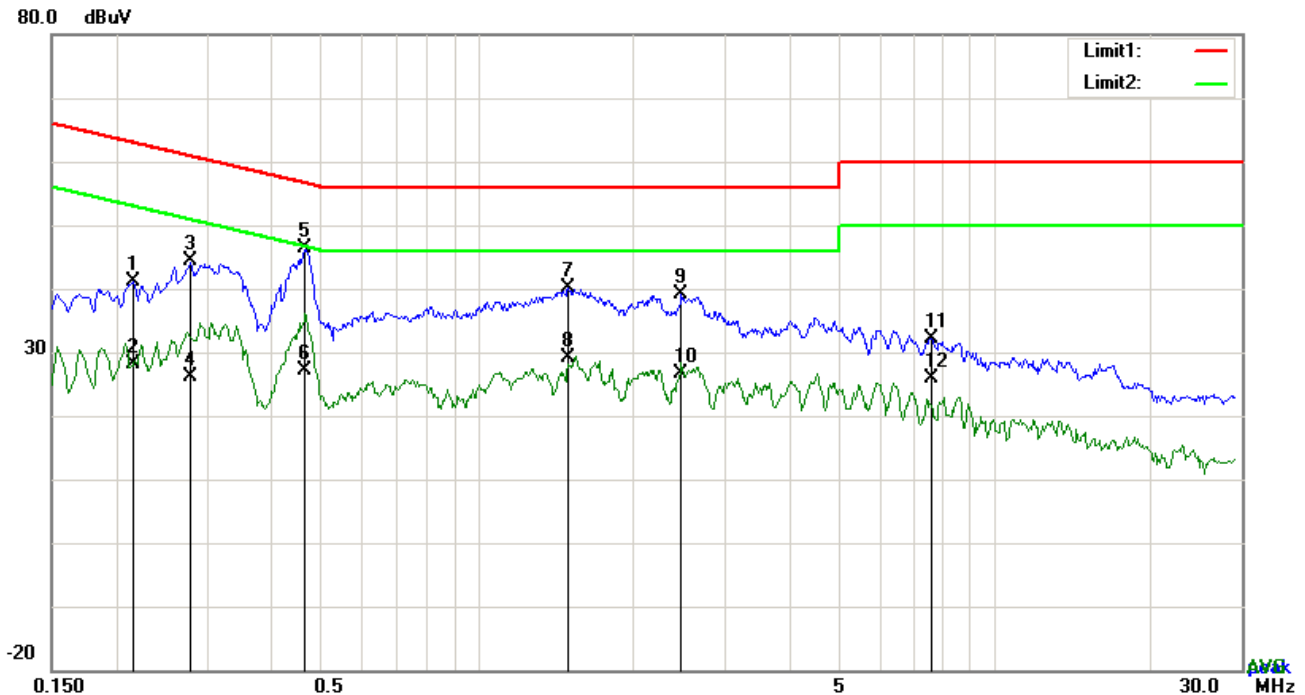
Test Report No.	17071411-FCC-R2
Page	19 of 47

	<p>coaxial cable.</p> <ol style="list-style-type: none"> <li>4. All other supporting equipment were powered separately from another main supply.</li> <li>5. The EUT was switched on and allowed to warm up to its normal operating condition.</li> <li>6. A scan was made on the NEUTRAL line (for AC mains) or Earth line (for DC power) over the required frequency range using an EMI test receiver.</li> <li>7. High peaks, relative to the limit line, The EMI test receiver was then tuned to the selected frequencies and the necessary measurements made with a receiver bandwidth setting of 10 kHz.</li> <li>8. Step 7 was then repeated for the LIVE line (for AC mains) or DC line (for DC power).</li> </ol>
Remark	
Result	<input checked="" type="checkbox"/> Pass <input type="checkbox"/> Fail

Test Data ☒ Yes ☐ N/A

Test Plot ☒ Yes (See below) ☐ N/A

Test Mode:	Transmitting Mode
------------	-------------------

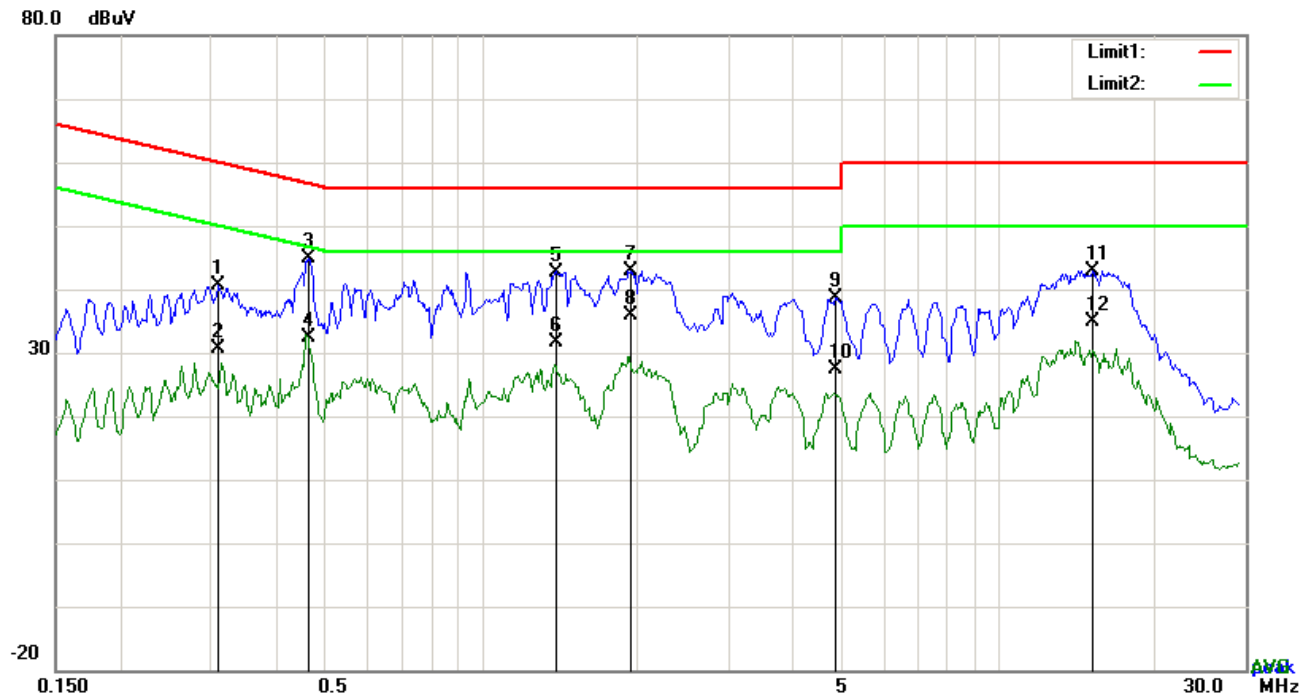


### Test Data

### Phase Line Plot at 120Vac, 60Hz

No.	P/L	Frequency (MHz)	Reading (dBμV)	Detector	Corrected (dB)	Result (dBμV)	Limit (dBμV)	Margin (dB)
1	L1	0.2163	31.09	QP	10.03	41.12	62.96	-21.84
2	L1	0.2163	18.14	AVG	10.03	28.17	52.96	-24.79
3	L1	0.2788	34.24	QP	10.03	44.27	60.85	-16.58
4	L1	0.2788	16.01	AVG	10.03	26.04	50.85	-24.81
5	L1	0.4659	36.39	QP	10.03	46.42	56.59	-10.17
6	L1	0.4659	17.13	AVG	10.03	27.16	46.59	-19.43
7	L1	1.4994	30.17	QP	10.04	40.21	56.00	-15.79
8	L1	1.4994	19.14	AVG	10.04	29.18	46.00	-16.82
9	L1	2.4822	29.02	QP	10.05	39.07	56.00	-16.93
10	L1	2.4822	16.59	AVG	10.05	26.64	46.00	-19.36
11	L1	7.5258	22.12	QP	10.12	32.24	60.00	-27.76
12	L1	7.5258	15.75	AVG	10.12	25.87	50.00	-24.13

**Test Mode:** Transmitting Mode

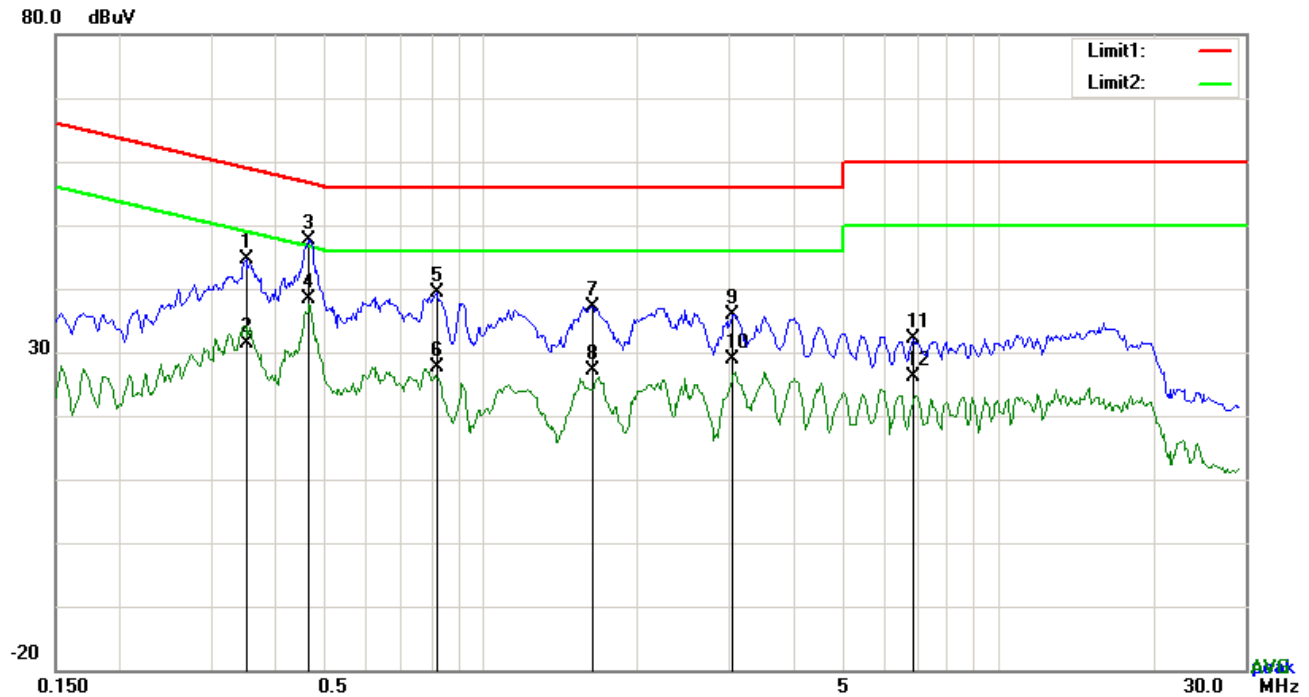


### Test Data

### Phase Neutral Plot at 120Vac, 60Hz

No.	P/L	Frequency (MHz)	Reading (dBuV)	Detector	Corrected (dB)	Result (dBuV)	Limit (dBuV)	Margin (dB)
1	N	0.3099	30.55	QP	10.02	40.57	59.97	-19.40
2	N	0.3099	20.52	AVG	10.02	30.54	49.97	-19.43
3	N	0.4612	34.79	QP	10.02	44.81	56.67	-11.86
4	N	0.4612	22.43	AVG	10.02	32.45	46.67	-14.22
5	N	1.3958	32.69	QP	10.03	42.72	56.00	-13.28
6	N	1.3958	21.51	AVG	10.03	31.54	46.00	-14.46
7	N	1.9479	32.79	QP	10.04	42.83	56.00	-13.17
8	N	1.9479	25.74	AVG	10.04	35.78	46.00	-10.22
9	N	4.8408	28.64	QP	10.07	38.71	56.00	-17.29
10	N	4.8408	17.38	AVG	10.07	27.45	46.00	-18.55
11	N	15.1457	32.79	QP	10.20	42.99	60.00	-17.01
12	N	15.1457	24.58	AVG	10.20	34.78	50.00	-15.22

**Test Mode:** Transmitting Mode

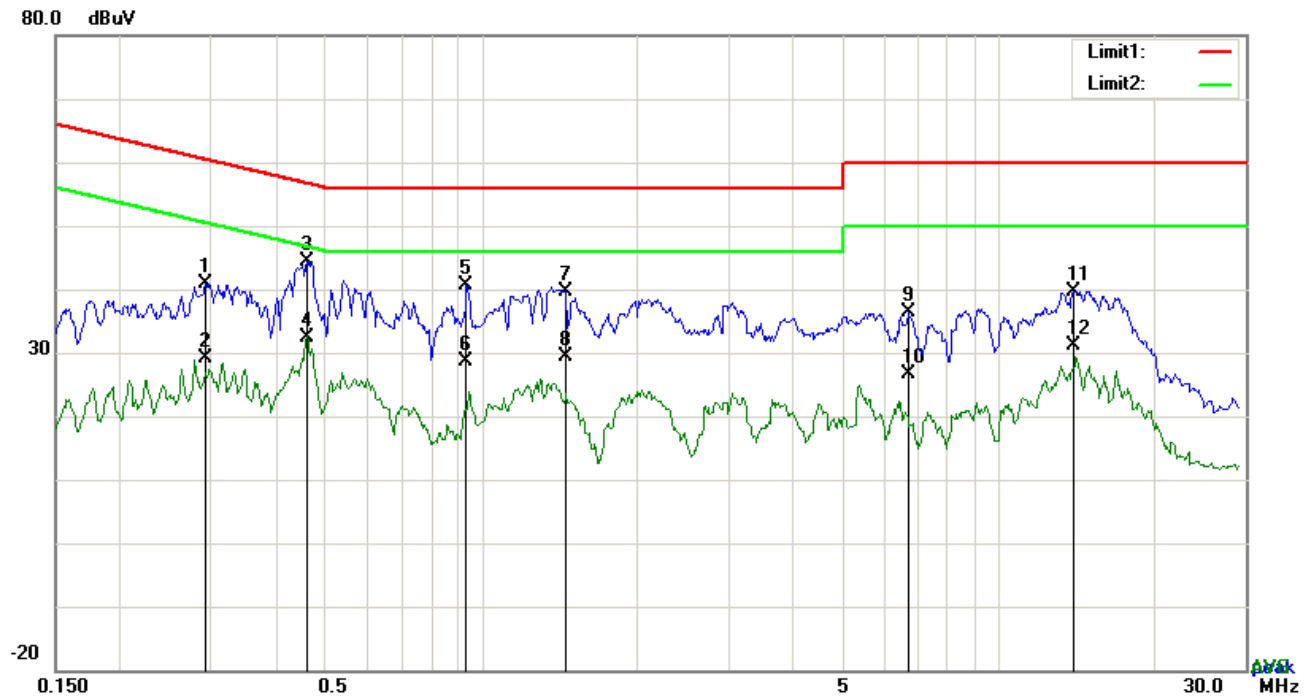


### Test Data

#### Phase Line Plot at 240Vac, 60Hz

No.	P/L	Frequency (MHz)	Reading (dBμV)	Detector	Corrected (dB)	Result (dBμV)	Limit (dBμV)	Margin (dB)
1	L1	0.3502	34.49	QP	10.03	44.52	58.96	-14.44
2	L1	0.3502	21.42	AVG	10.03	31.45	48.96	-17.51
3	L1	0.4659	37.63	QP	10.03	47.66	56.59	-8.93
4	L1	0.4659	28.42	AVG	10.03	38.45	46.59	-8.14
5	L1	0.8208	29.31	QP	10.03	39.34	56.00	-16.66
6	L1	0.8208	17.68	AVG	10.03	27.71	46.00	-18.29
7	L1	1.6398	27.11	QP	10.04	37.15	56.00	-18.85
8	L1	1.6398	17.11	AVG	10.04	27.15	46.00	-18.85
9	L1	3.0624	25.88	QP	10.06	35.94	56.00	-20.06
10	L1	3.0624	18.88	AVG	10.06	28.94	46.00	-17.06
11	L1	6.8454	22.07	QP	10.11	32.18	60.00	-27.82
12	L1	6.8454	16.07	AVG	10.11	26.18	50.00	-23.82

**Test Mode:** Transmitting Mode



### Test Data

### Phase Neutral Plot at 240Vac, 60Hz

No.	P/L	Frequency (MHz)	Reading (dBμV)	Detector	Corrected (dB)	Result (dBμV)	Limit (dBμV)	Margin (dB)
1	N	0.2924	30.96	QP	10.02	40.98	60.46	-19.48
2	N	0.2924	19.15	AVG	10.02	29.17	50.46	-21.29
3	N	0.4588	34.40	QP	10.02	44.42	56.71	-12.29
4	N	0.4588	22.32	AVG	10.02	32.34	46.71	-14.37
5	N	0.9378	30.53	QP	10.03	40.56	56.00	-15.44
6	N	0.9378	18.54	AVG	10.03	28.57	46.00	-17.43
7	N	1.4604	29.57	QP	10.03	39.60	56.00	-16.40
8	N	1.4604	19.24	AVG	10.03	29.27	46.00	-16.73
9	N	6.6738	26.31	QP	10.09	36.40	60.00	-23.60
10	N	6.6738	16.45	AVG	10.09	26.54	50.00	-23.46
11	N	13.9746	29.53	QP	10.19	39.72	60.00	-20.28
12	N	13.9746	20.93	AVG	10.19	31.12	50.00	-18.88

## 6.7 Radiated Emissions & Restricted Band

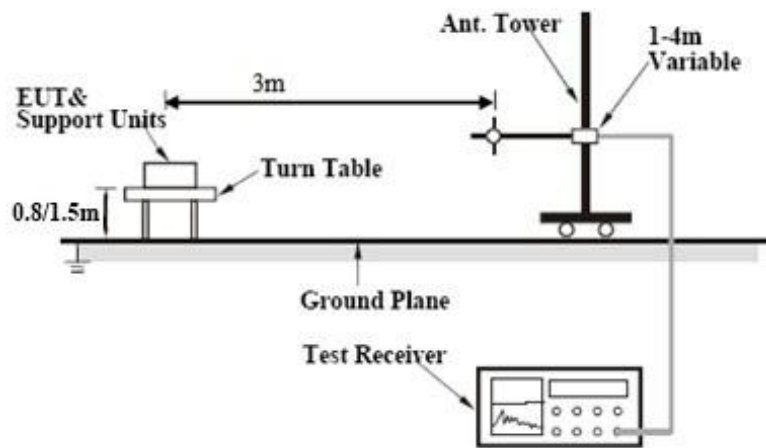
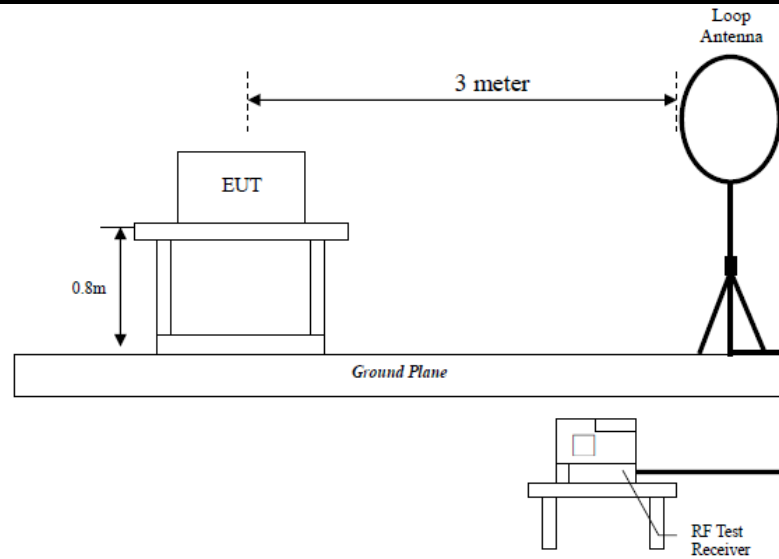
Temperature	24 °C
Relative Humidity	53%
Atmospheric Pressure	1010mbar
Test date :	December 15, 2017
Tested By :	Aaron Liang

### Requirement(s):

Spec	Item	Requirement	Applicable																
47CFR§15.247(d), RSS210 (A8.5)	a)	Except higher limit as specified elsewhere in other section, the emissions from the low-power radio-frequency devices shall not exceed the field strength levels specified in the following table and the level of any unwanted emissions shall not exceed the level of the fundamental emission. The tighter limit applies at the band edges	<input checked="" type="checkbox"/>																
		<table><tr><th>Frequency range (MHz)</th><th>Field Strength (µV/m)</th></tr><tr><td>0.009~0.490</td><td>2400/F(KHz)</td></tr><tr><td>0.490~1.705</td><td>24000/F(KHz)</td></tr><tr><td>1.705~30.0</td><td>30</td></tr><tr><td>30 – 88</td><td>100</td></tr><tr><td>88 – 216</td><td>150</td></tr><tr><td>216 960</td><td>200</td></tr><tr><td>Above 960</td><td>500</td></tr></table>		Frequency range (MHz)	Field Strength (µV/m)	0.009~0.490	2400/F(KHz)	0.490~1.705	24000/F(KHz)	1.705~30.0	30	30 – 88	100	88 – 216	150	216 960	200	Above 960	500
		Frequency range (MHz)		Field Strength (µV/m)															
		0.009~0.490		2400/F(KHz)															
		0.490~1.705		24000/F(KHz)															
		1.705~30.0		30															
		30 – 88		100															
		88 – 216		150															
		216 960		200															
	Above 960	500																	
For non-restricted band, In any 100 kHz bandwidth outside the frequency band in which the spread spectrum or digitally modulated intentional radiator is operating, the radio frequency power that is produced by the intentional radiator shall be at least 20 dB or 30dB below that in the 100 kHz bandwidth within the band that contains the highest level of the desired power, determined by the measurement method on output power to be used. Attenuation below the general limits specified in § 15.209(a) is not required		<input checked="" type="checkbox"/>																	
<input checked="" type="checkbox"/> 20 dB down <input type="checkbox"/> 30 dB down																			
c)	or restricted band, emission must also comply with the radiated emission limits specified in 15.209	<input checked="" type="checkbox"/>																	



## Test Setup



## Procedure

- The EUT was switched on and allowed to warm up to its normal operating condition.
- The test was carried out at the selected frequency points obtained from the EUT characterization. Maximization of the emissions, was carried out by rotating the EUT, changing the antenna polarization, and adjusting the antenna height in the following manner:
  - Vertical or horizontal polarization (whichever gave the higher emission level over a full rotation of the EUT) was chosen.
  - The EUT was then rotated to the direction that gave the maximum emission.
  - Finally, the antenna height was adjusted to the height that gave the maximum emission.
- The resolution bandwidth and video bandwidth of test receiver/spectrum analyzer is 120 kHz for Quasi Peak detection at frequency below 1GHz.
- The resolution bandwidth of test receiver/spectrum analyzer is 1MHz and video bandwidth is 3MHz with Peak detection for Peak measurement at frequency above 1GHz.

	<p>The resolution bandwidth of test receiver/spectrum analyzer is 1MHz and the video bandwidth is 10Hz with Peak detection for Average Measurement as below at frequency above 1GHz.</p> <p>5. Steps 2 and 3 were repeated for the next frequency point, until all selected frequency points were measured.</p>
Remark	
Result	<input checked="" type="checkbox"/> Pass <input type="checkbox"/> Fail

Test Data ☒ Yes ☐ N/A

Test Plot ☒ Yes (See below) ☐ N/A

### Test Result:

Test Mode:	Transmitting Mode
------------	-------------------

Frequency range: 9KHz - 30MHz

Freq. (MHz)	Detection value	Factor (dB/m)	Reading (dBuV/m)	Result (dBuV/m)	Limit@3m (dBuV/m)	Margin (dB)
--	--	--	--	--	--	>20
--	--	--	--	--	--	>20

Note:

The amplitude of spurious emissions which are attenuated by more than 20dB below the permissible value has no need to be reported.

Distance extrapolation factor =  $40 \log (\text{specific distance}/\text{test distance})$ (dB);

Limit line = specific limits(dBuV) + distance extrapolation factor.

**Test Mode:** Transmitting Mode

**30MHz -1GHz**

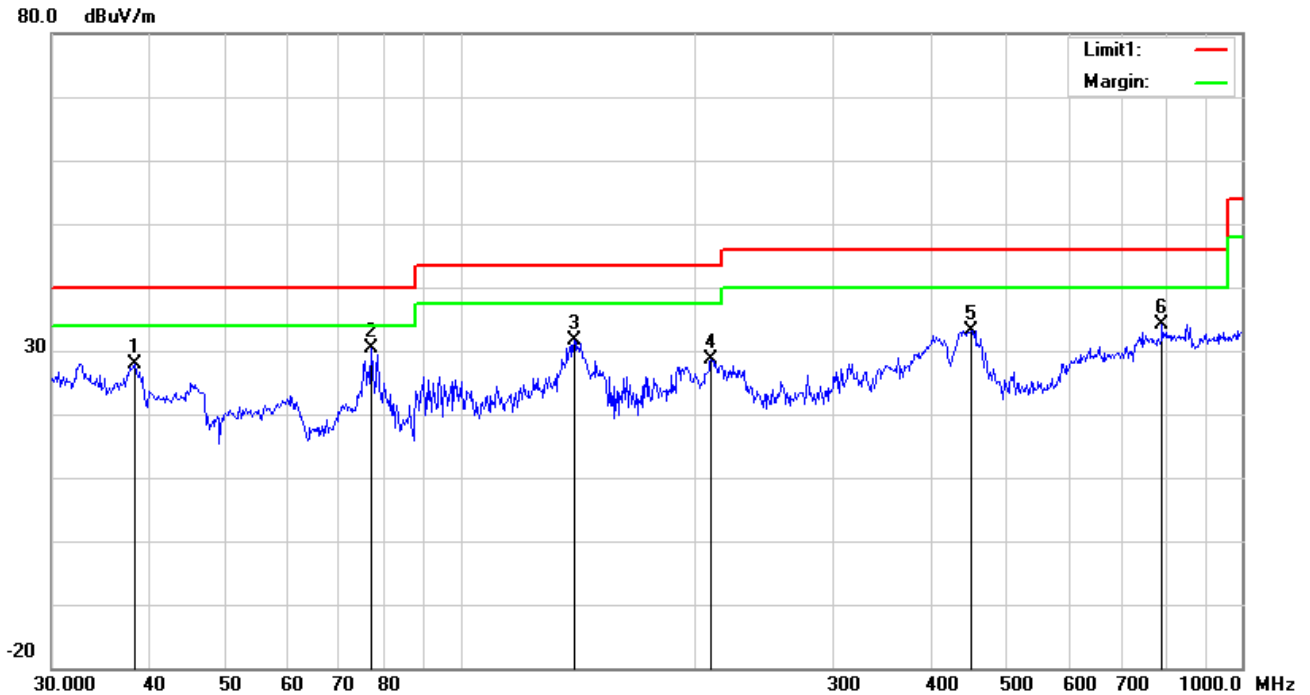


*Test Data*

**Vertical Polarity Plot @3m**

No.	P/L	Frequency	Reading	Detect or	Ant_F	PA_G	Cab_L	Result	Limit	Margin	Height	Degr ee
		(MHz)	(dBuV/m)		(dB/m)	(dB)	(dB)	(dBuV/m)	(dBuV/m)	(dB)	(cm)	( ° )
1	V	374.6226	38.06	peak	15.17	22.08	2.03	33.18	46.00	-12.82	100	147
2	V	434.0651	37.01	peak	16.38	21.94	2.09	33.54	46.00	-12.46	100	272
3	V	138.8735	38.34	peak	12.67	22.41	1.26	29.86	43.50	-13.64	100	245
4	V	77.0505	49.92	QP	7.66	22.41	1.00	36.17	40.00	-3.83	100	328
5	V	57.9993	43.61	peak	7.52	22.40	0.76	29.49	40.00	-10.51	100	282
6	V	37.8121	35.37	peak	15.50	22.27	0.78	29.38	40.00	-10.62	100	124

## 30MHz -1GHz



### Test Data

#### Horizontal Polarity Plot @3m

N o.	P/ L	Frequency (MHz)	Reading (dBuV/m)	Detect or	Ant_F (dB/m)	PA_G (dB)	Cab_L (dB)	Result (dBuV/m)	Limit (dBuV/m)	Margin (dB)	Height (cm)	Degr ee (°)
1	H	38.3462	34.37	peak	15.11	22.27	0.78	27.99	40.00	-12.01	100	253
2	H	76.7808	44.22	peak	7.66	22.41	0.99	30.46	40.00	-9.54	100	337
3	H	139.8508	40.17	peak	12.61	22.41	1.27	31.64	43.50	-11.86	100	266
4	H	209.3129	37.52	peak	11.97	22.36	1.57	28.70	43.50	-14.80	200	286
5	H	451.1350	36.30	peak	16.72	21.91	2.14	33.25	46.00	-12.75	100	23
6	H	790.6188	31.10	peak	21.29	21.17	2.94	34.16	46.00	-11.84	100	76

## Above 1GHz

Test Mode:	Transmitting Mode
------------	-------------------

Frequency	Meter Reading	Antenna Factor	Cable loss	Preamplifier factor	Emission Level	Limits	Margin	Detector	Polarity
(MHz)	(dBμV)	(dB)	(dB)	(dB)	(dBμV/m)	(dBμV/m)	(dB)	(PK/AV)	(H/V)
Low Channel:GFSK Mode-2402MHz									
2390	41.06	28.72	3.36	26.32	46.82	74	-27.18	peak	Vertical
4804	31.58	32.94	3.98	27.49	41.01	54	-12.99	Average	Vertical
4804	41.16	32.94	3.98	27.49	50.59	74	-23.41	peak	Vertical
7206	31.84	25.28	5.51	27.94	34.69	54	-19.31	Average	Vertical
7206	41.78	25.28	5.51	27.94	44.63	74	-29.37	peak	Vertical
2390	40.14	28.72	3.36	26.32	45.90	74	-28.10	peak	Horizontal
4804	31.33	32.94	3.98	27.49	40.76	54	-13.24	Average	Horizontal
4804	41.95	32.94	3.98	27.49	51.38	74	-22.62	peak	Horizontal
7206	31.76	25.28	5.51	27.94	34.61	54	-19.39	Average	Horizontal
7206	43.17	25.28	5.51	27.94	46.02	74	-27.98	peak	Horizontal
Middle Channel:GFSK Mode-2440MHz									
4882	30.25	32.11	4.04	27.53	38.87	54	-15.13	Average	Vertical
4882	40.83	32.11	4.04	27.53	49.45	74	-24.55	peak	Vertical
7323	31.76	24.33	5.58	27.96	33.71	54	-20.29	Average	Vertical
7323	41.84	24.33	5.58	27.96	43.79	74	-30.21	peak	Vertical
4882	30.63	32.11	4.04	27.53	39.25	54	-14.75	Average	Horizontal
4882	41.83	32.11	4.04	27.53	50.45	74	-23.55	peak	Horizontal
7323	34.65	24.33	5.58	27.96	36.60	54	-17.40	Average	Horizontal
7323	42.45	24.33	5.58	27.96	44.40	74	-29.60	peak	Horizontal
High Channel:GFSK Mode-2480MHz									
2483.5	40.48	28.79	3.48	26.34	46.41	74	-27.59	peak	Vertical
4960	31.48	31.32	4.12	27.58	39.34	54	-14.66	Average	Vertical
4960	41.53	31.32	4.12	27.58	49.39	74	-24.61	peak	Vertical
7440	31.43	24.38	5.68	27.99	33.50	54	-20.50	Average	Vertical
7440	41.79	24.38	5.68	27.99	43.86	74	-30.14	peak	Vertical
2483.5	41.53	28.79	3.48	26.34	47.46	74	-26.54	peak	Horizontal
4960	31.84	31.32	4.12	27.58	39.70	54	-14.30	Average	Horizontal
4960	41.86	31.32	4.12	27.58	49.72	74	-24.28	peak	Horizontal
7440	33.36	24.38	5.68	27.99	35.43	54	-18.57	Average	Horizontal

**Note:**

- 1, The testing has been conformed to  $10 \times 2480\text{MHz} = 24,800\text{MHz}$*
- 2, All other emissions more than 30 dB below the limit*
- 3, X-Axis, Y-Axis and Z-Axis were investigated. The results above show only the worst case.*
- 4, The radiated spurious test above 18GHz is subcontracted to SIEMIC (Nanjing-China) Laboratories. and found 30dB below the limit at least.*

## Annex A. TEST INSTRUMENT

Instrument	Model	Serial #	Cal Date	Cal Due	In use
<b>AC Line Conducted</b>					
EMI test receiver	ESCS30	8471241027	09/15/2017	09/14/2018	<input checked="" type="checkbox"/>
Line Impedance	LI-125A	191106	09/23/2017	09/22/2018	<input checked="" type="checkbox"/>
Line Impedance	LI-125A	191107	09/23/2017	09/22/2018	<input checked="" type="checkbox"/>
ISN	ISN T800	34373	09/23/2017	09/22/2018	<input type="checkbox"/>
Transient Limiter	LIT-153	531118	08/30/2017	08/29/2018	<input checked="" type="checkbox"/>
<b>RF conducted test</b>					
Agilent ESA-E SERIES	E4407B	MY45108319	09/23/2017	09/22/2018	<input checked="" type="checkbox"/>
Power Splitter	1#	1#	08/30/2017	08/29/2018	<input checked="" type="checkbox"/>
DC Power Supply	E3640A	MY40004013	09/15/2017	09/14/2018	<input checked="" type="checkbox"/>
<b>Radiated Emissions</b>					
EMI test receiver	ESL6	100262	09/15/2017	09/14/2018	<input checked="" type="checkbox"/>
Positioning Controller	UC3000	MF780208282	11/18/2016	11/16/2018	<input checked="" type="checkbox"/>
OPT 010 AMPLIFIER (0.1-1300MHz)	8447E	2727A02430	08/30/2017	08/29/2018	<input checked="" type="checkbox"/>
Horn Antenna	BBHA9170	3145226D1	09/27/2017	09/26/2018	<input checked="" type="checkbox"/>
Microwave Preamplifier (1 ~ 26.5GHz)	8449B	3008A02402	03/23/2017	03/22/2018	<input checked="" type="checkbox"/>
Active Antenna (9kHz-30MHz)	AL-130	121031	10/12/2017	10/11/2018	<input type="checkbox"/>
Bilog Antenna (30MHz~6GHz)	JB6	A110712	09/19/2017	09/18/2018	<input checked="" type="checkbox"/>
Double Ridge Horn Antenna (1 ~18GHz)	AH-118	71283	09/22/2017	09/21/2018	<input checked="" type="checkbox"/>
Universal Radio Communication Tester	CMU200	121393	09/23/2017	09/22/2018	<input checked="" type="checkbox"/>



## Annex B. EUT And Test Setup Photographs

### Annex B.i. Photograph: EUT External Photo

EUT - Front View



EUT - Rear View





EUT - Top View



EUT - Bottom View



EUT - Left View



EUT - Right View





**Annex B.ii. Photograph: EUT Internal Photo**

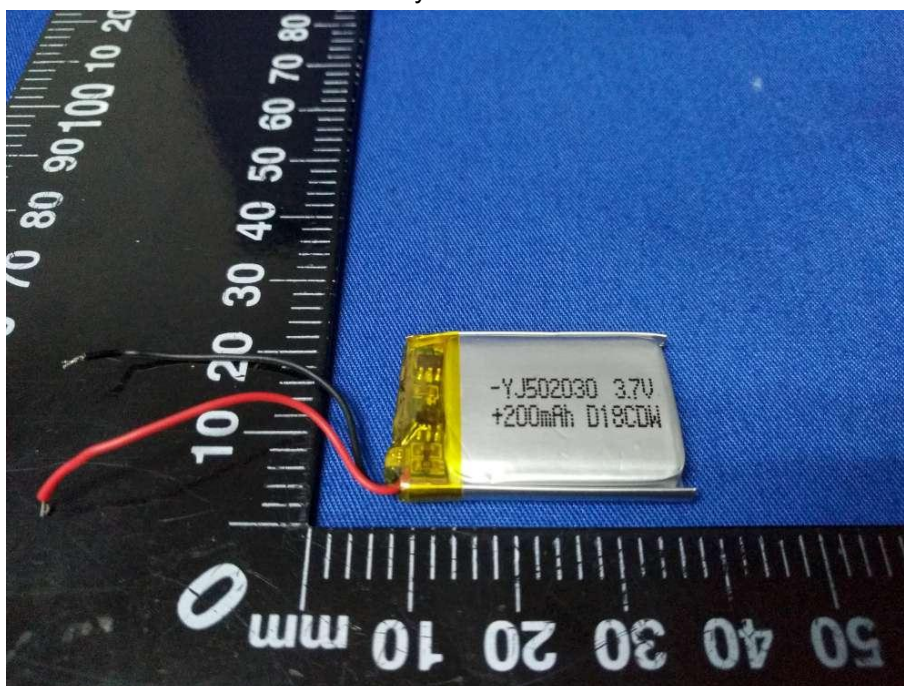
Cover Off - Top View 1



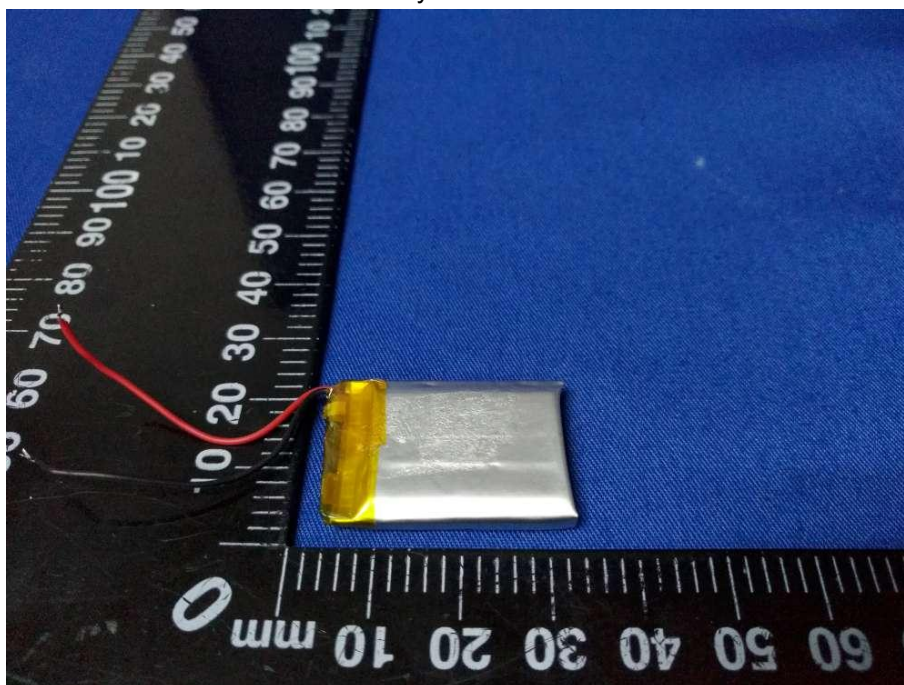
Cover Off - Top View 2



Battery - Front View

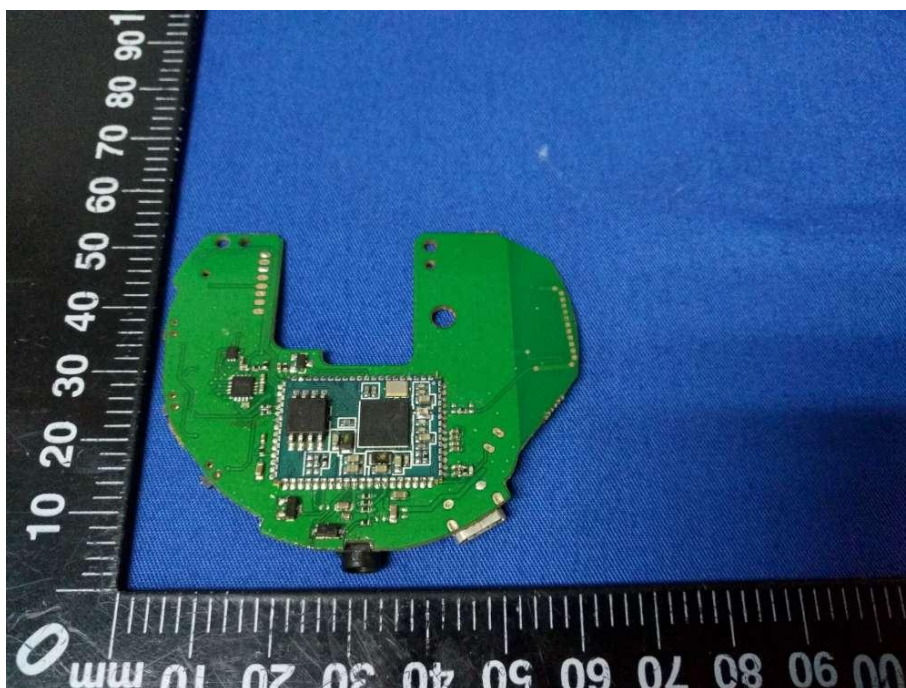


Battery - Rear View

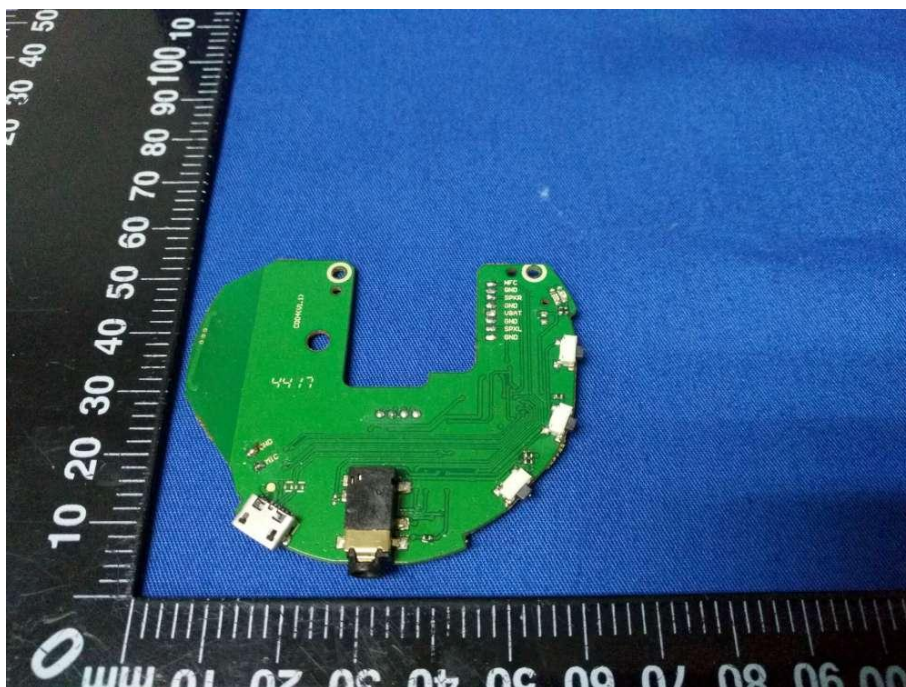




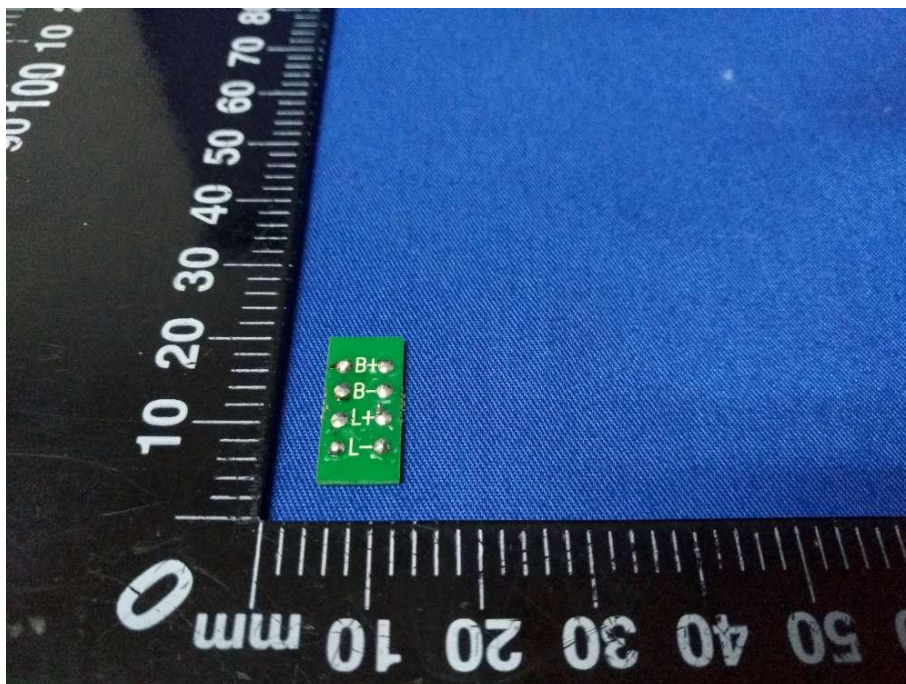
Mainboard - Front View



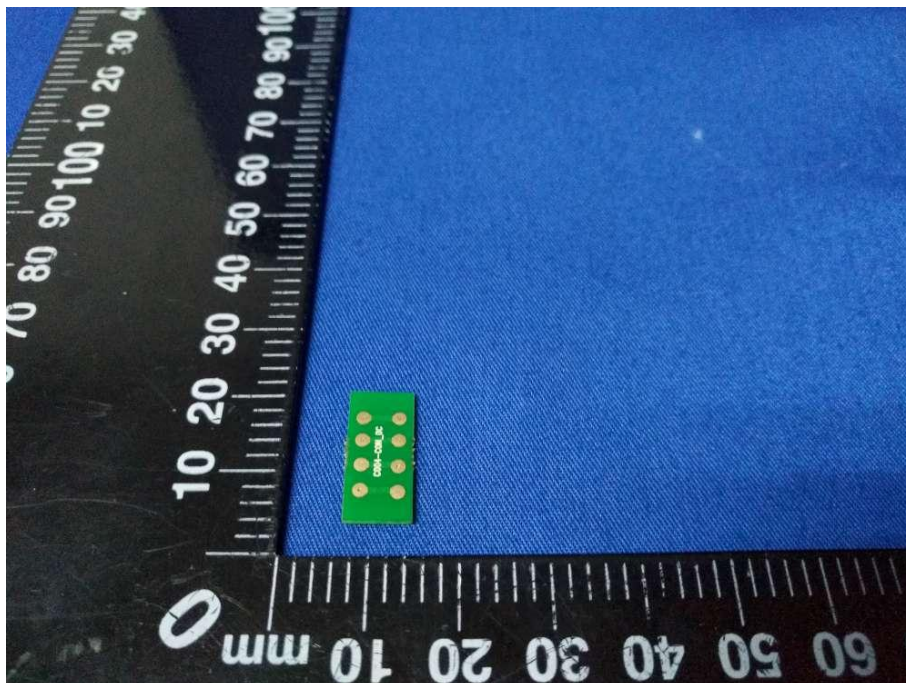
Mainboard - Rear View



Small board - Front View

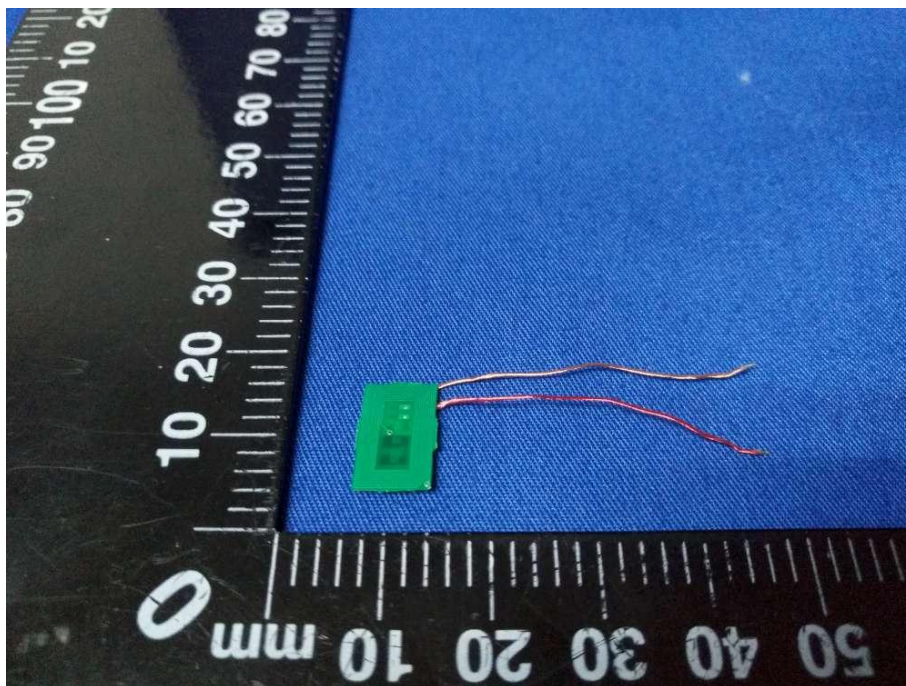


Small board – Rear View

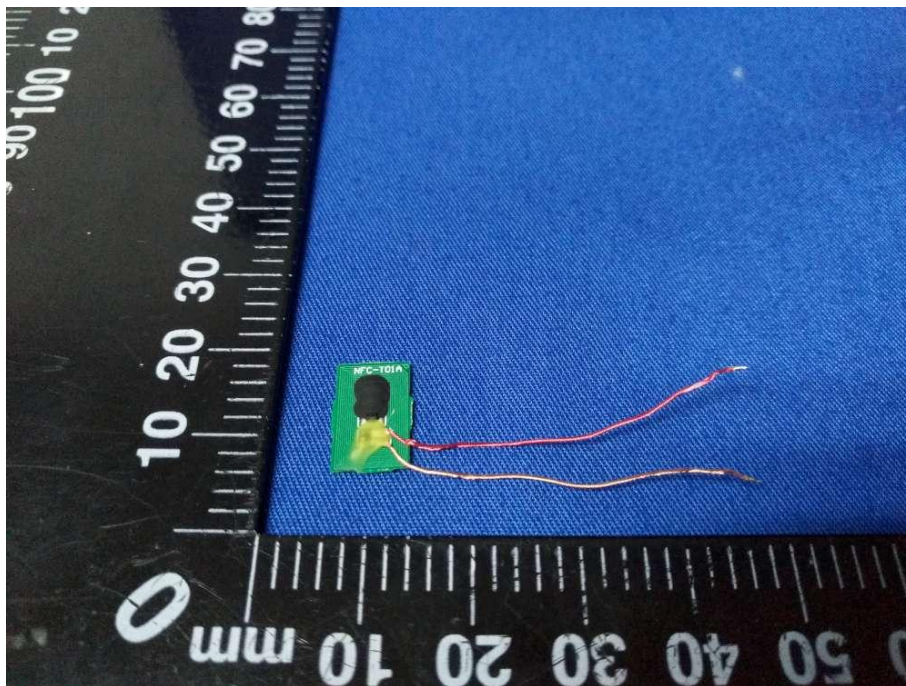




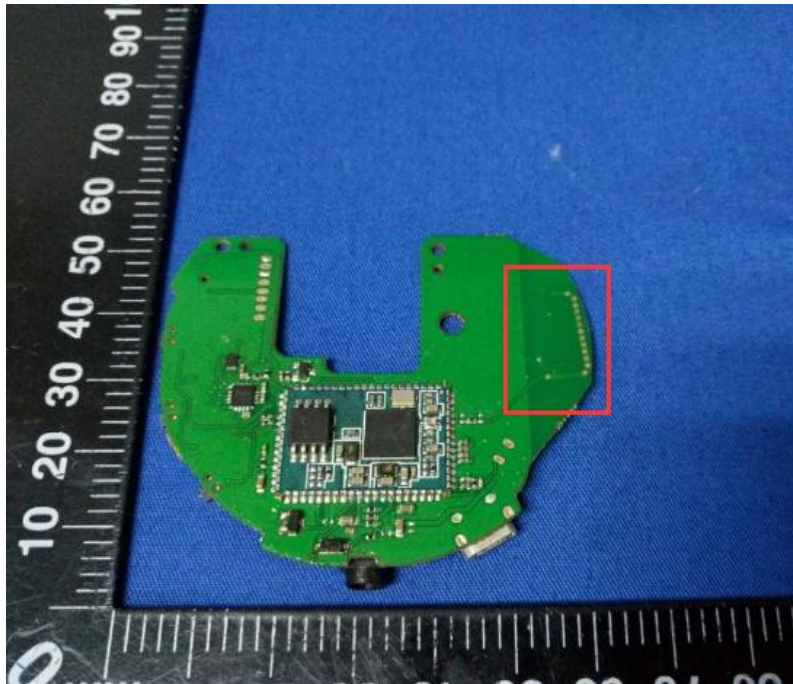
Connected board - Front View



Connected board – Rear View



BT - Antenna View

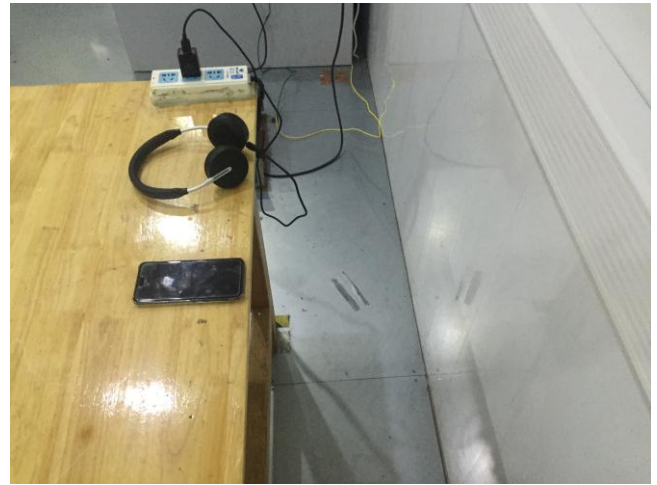




### Annex B.iii. Photograph: Test Setup Photo



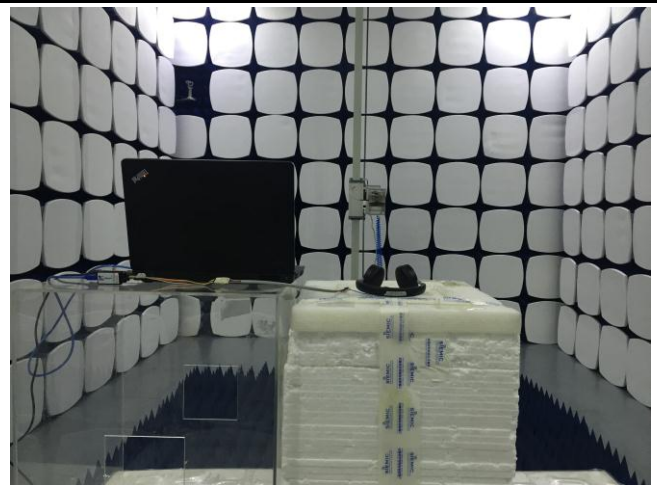
Conducted Emissions Test Setup Front View



Conducted Emissions Test Setup Side View



Radiated Spurious Emissions Test Setup Below 1GHz

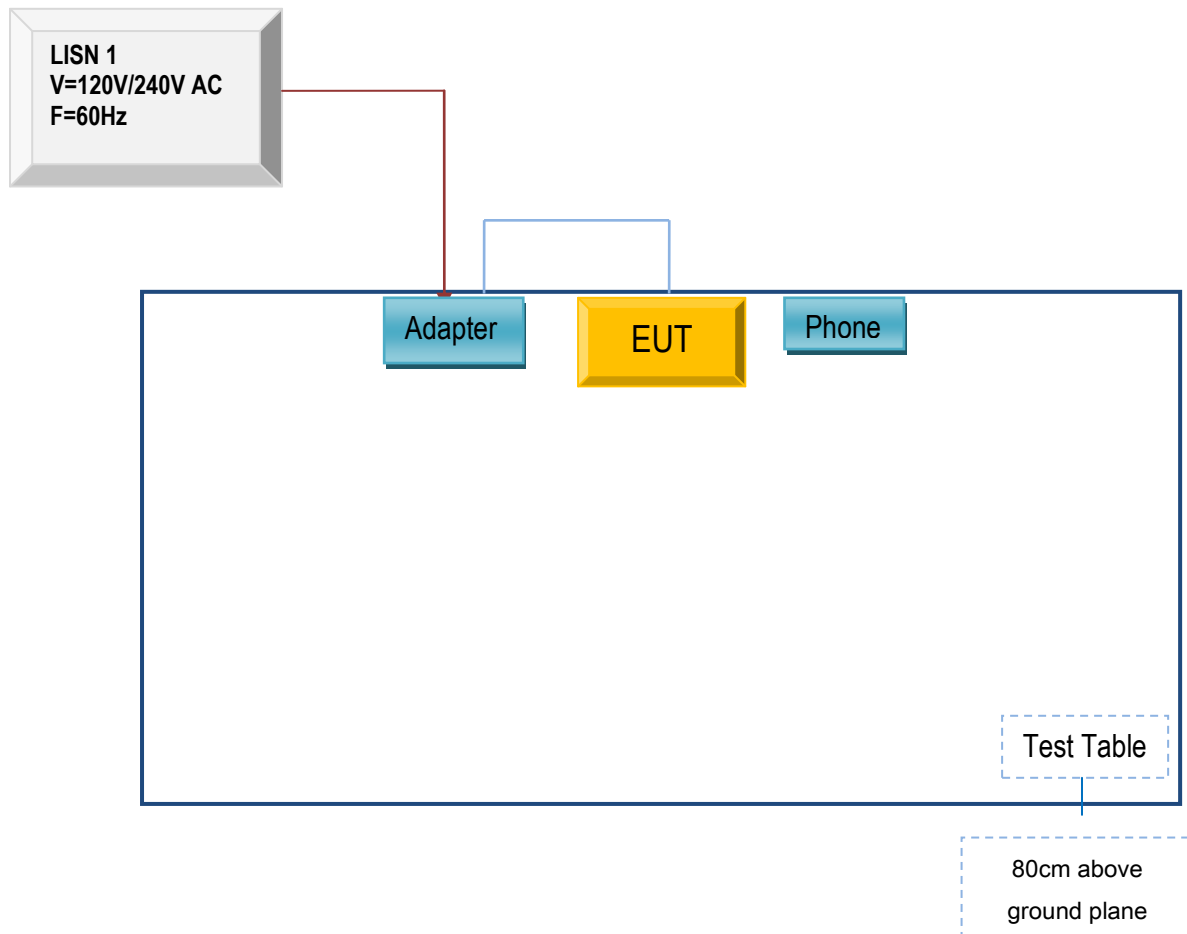


Radiated Spurious Emissions Test Setup Above  
1GHz

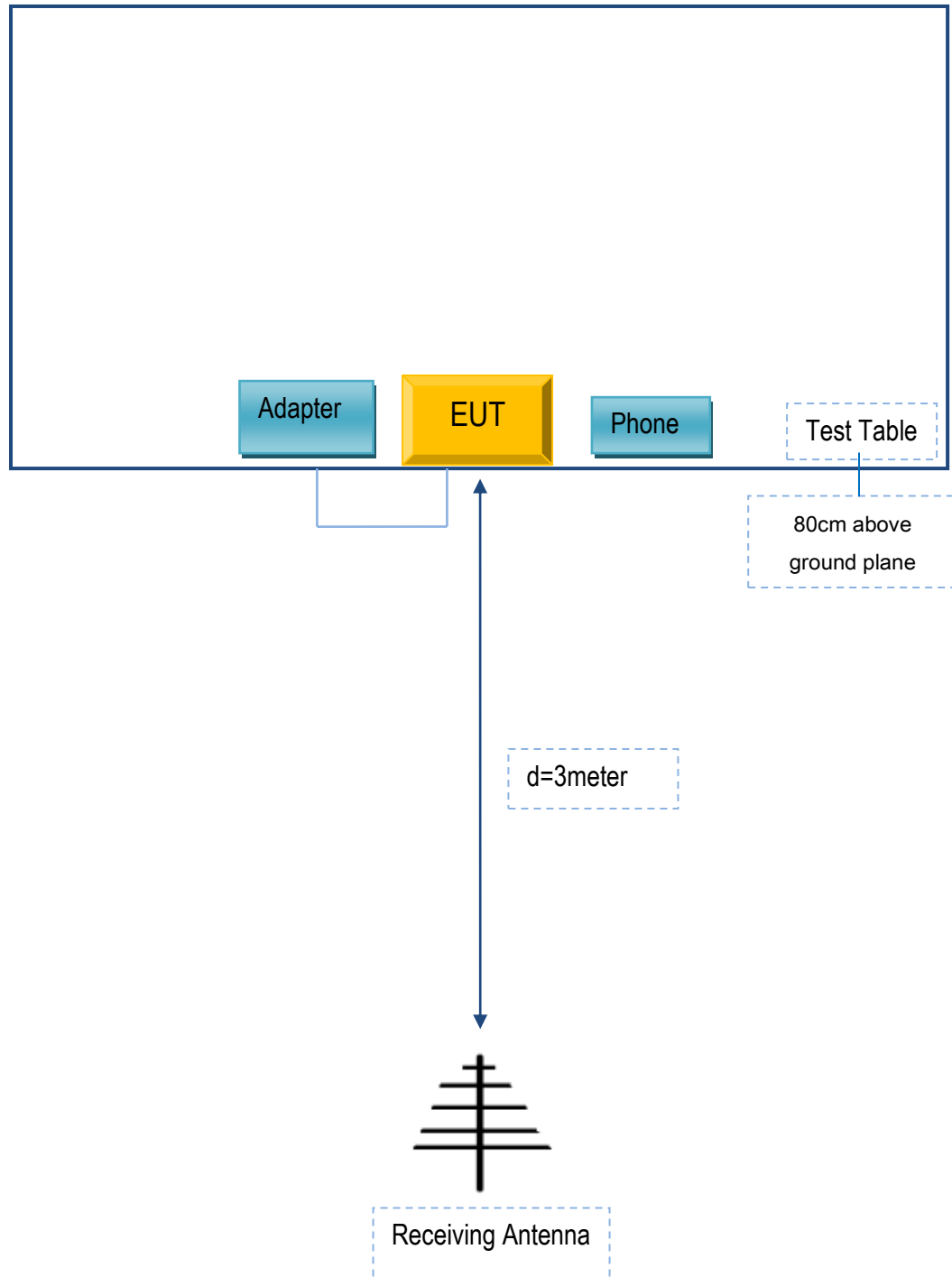
## Annex C. TEST SETUP AND SUPPORTING EQUIPMENT

### Annex C.ii. TEST SET UP BLOCK

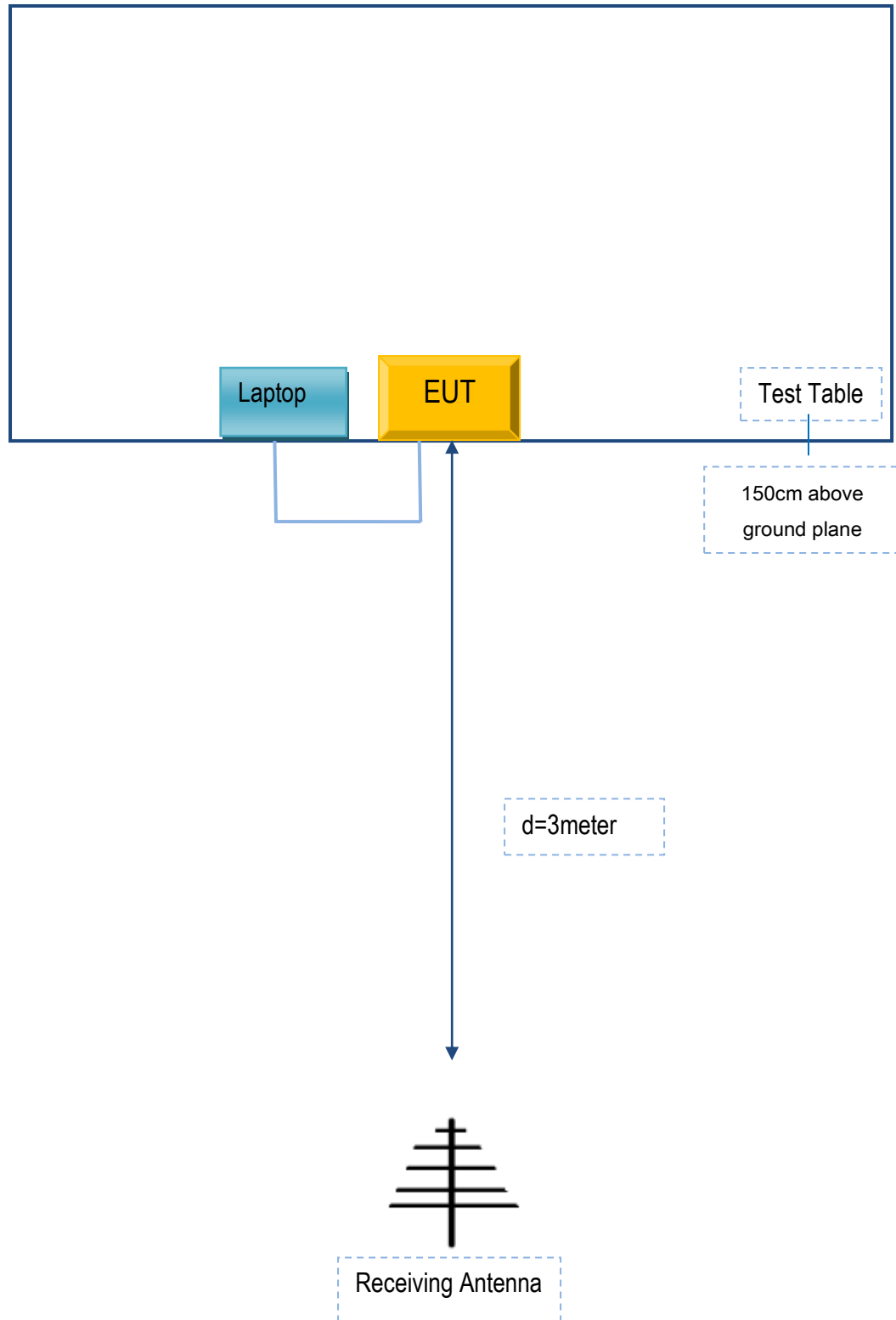
#### Block Configuration Diagram for AC Line Conducted Emissions



**Block Configuration Diagram for Radiated Emissions ( Below 1GHz ) .**



**Block Configuration Diagram for Radiated Emissions ( Above 1GHz ) .**



## **Annex C. ii. SUPPORTING EQUIPMENT DESCRIPTION**

The following is a description of supporting equipment and details of cables used with the EUT.

### **Supporting Equipment:**

Manufacturer	Equipment Description	Model	Serial No
Lenovo	Laptop	E40	LR-1EHRX
DCA	Adapter	E2164A	N/A

### **Supporting Cable:**

Cable type	Shield Type	Ferrite Core	Length	Serial No
USB Cable	Un-shielding	No	0.8m	N/A

Test Report No.	17071411-FCC-R2
Page	46 of 47

## Annex D. User Manual / Block Diagram / Schematics / Partlist

Please see the attachment



## Annex E. DECLARATION OF SIMILARITY

N/A