

# Mobile Wifi User Instruction

Mobile Wifi  
Model No.: HK05

## Features

HK05 is an upgraded WiFi box for Mobile Wifi series, which is an exquisite light itself. The APP has new UI faces, and new functions. With easy link to the wifi router, you will be able to control the lights anywhere



### App Long Distance Control

With WiFi & smart phone APP, you can control the lights anywhere, compatible with IOS, Android 4.3 or above.



### Compatibility

2.4GHz RF chip, compatible with all Mi-light series.



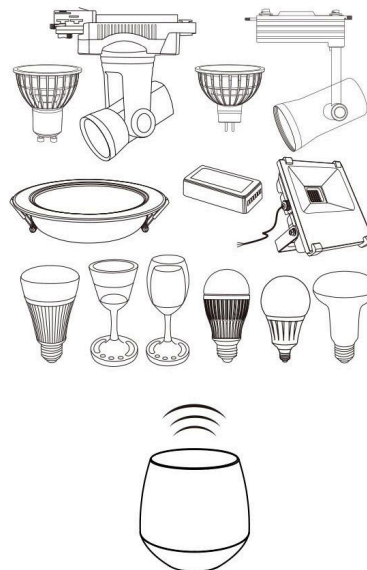
### Timer Function

Automatic ON/OFF with timer function



### Color Changing & Dimmable

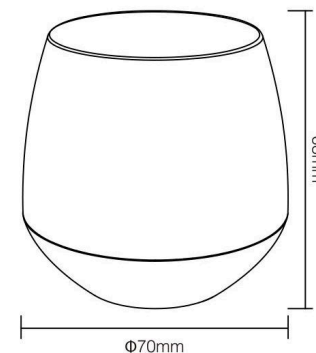
16 Millions of colors to choose, brightness dimmable,



Compatible with all mobile wifi 2.4GHz series

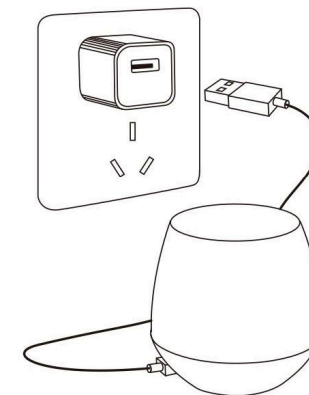
## Parameters

Model No.: HK05  
Input: DC5V/500mA  
Power: 2W  
Color: RGB  
Protocol: 2.4GHz, WiFi 802.11b/g/n  
Size: Diameter 70mm, Height 68mm  
GW: 50g



## Instructions

Supply power for the device with USB power adapter, DC5V/500mA.



## APP Download

Search 'Milight' from Apple store, or scan the code shown on the left.  
Search 'Milight' from Google Play store, or scan the code shown on the left. (Android 4.3 or above.)

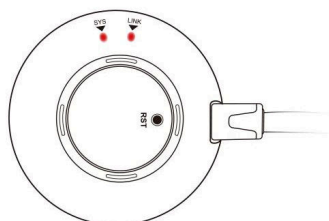


## Smart Configuration

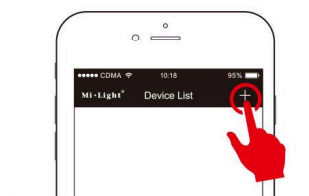
- 1 Open WLAN via mobile phone, connect to the wireless router.



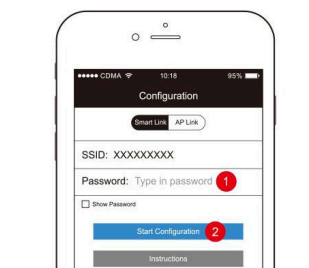
- 2 Press 'RST' (The SYS indicator light flickers, the LINK indicator light flashes.)



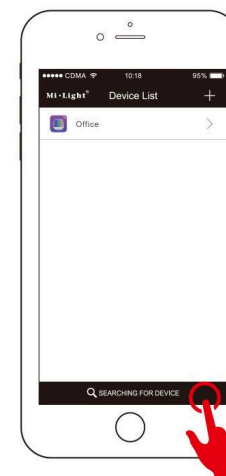
- 3 Open Mi-light APP, press + to start Configuration



- 4 Type in your wireless password, press 'Start Configuration'



- 5 After the configuration is successful, return to devices list,, click to search device, then You can control it through the phone .



## Caution

1. Cannot exposure to sunshine in case of aging,
2. Avoid contact with corrosive liquids, ie strong alkaline liquid,
3. Pay attention to fire, moisture, fall off
4. Working temperature ~40 C -10 C, storage temperature -20 C~60 C.



Made in China

#### FCC Warning

This device complies with Part 15 of the FCC Rules. Operation is subject to the following two conditions

- (1) this device may not cause harmful interference, and
- (2) this device must accept any interference received, including interference that may cause undesired operation. Changes or modifications not expressly approved by the party responsible for compliance could void the user's authority to operate the equipment.

Note 1: This equipment has been tested and found to comply with the limits for a Class B digital device, pursuant to part 15 of the FCC Rules. These limits are designed to provide reasonable protection against harmful interference in a residential installation. This equipment generates, uses and can radiate radio frequency energy and, if not installed and used in accordance with the instructions, may cause harmful interference to radio communications. However, there is no guarantee that interference will not occur in a particular installation. If this equipment does cause harmful interference to radio or television reception, which can be determined by turning the equipment off and on, the user is encouraged to try to correct the interference by one or more of the following measures:

- Reorient or relocate the receiving antenna.
- Increase the separation between the equipment and receiver.
- Connect the equipment into an outlet on a circuit different from that to which the receiver is connected.
- Consult the dealer or an experienced radio/TV technician for help.

Note 2: 1.Changes or modifications to this unit not expressly approved by the party responsible for compliance could void the user's authority to operate the equipment.

2. The minimum separation generally be used is at least 20 cm.