

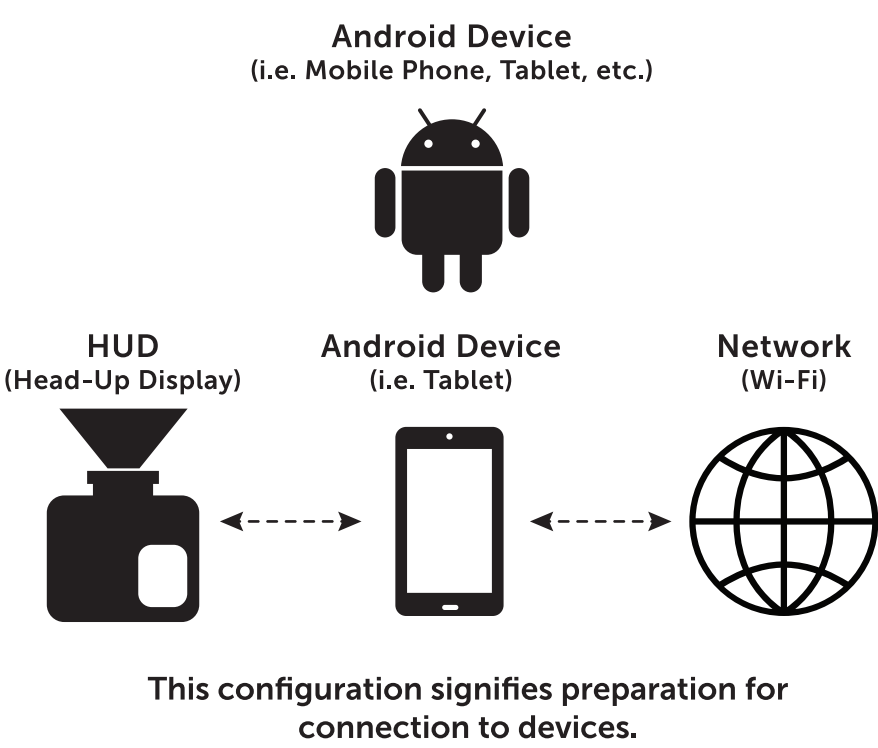
WARNING!

We advise users to store the Epic Eagle HUD in an environment away from direct sunlight when not in use or for extended periods of time. When power is applied to the HUD, a cooling fan is activated. The operation of the fan enables the HUD to operate even in extreme heat from direct sunlight. When not powered, the fan does not run and it should be treated with the same care as you would any other consumer electronics device. Post flight, we recommend operators should take it off the glareshield and place back into the storage bag. We strongly recommend not leaving in a hot aircraft cabin for extended periods of time.

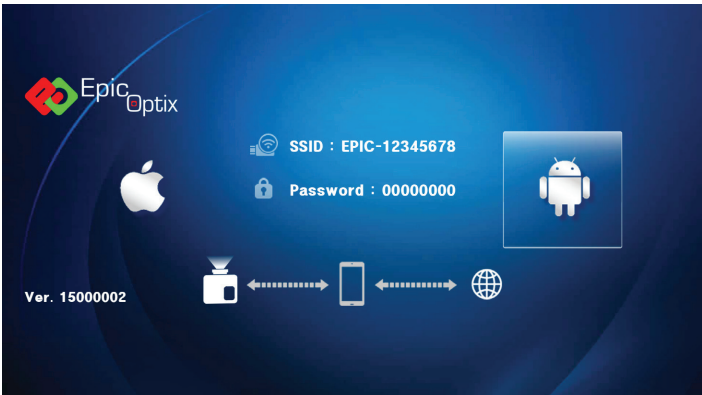


Epic Eagle 1
Quick Start Guide
For Android Devices to
Nav/GPS/ADS-B Device

Icon Guide



Android User Interface View



OPERATING INSTRUCTIONS

Step 1

1. Power on your Nav/GPS/ADS-B device.



Avidyne ADS-B Receiver

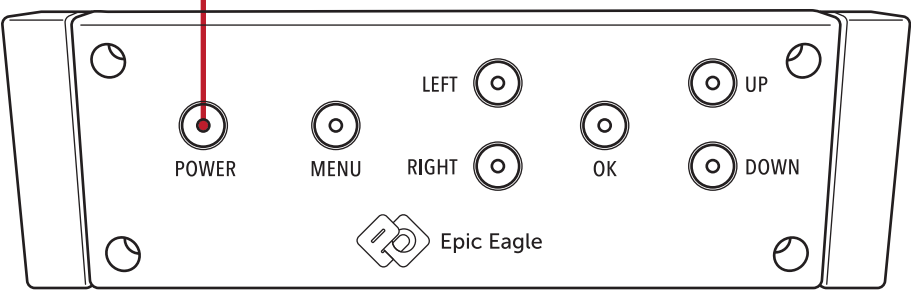


Stratus ADS-B Receiver

Step 2

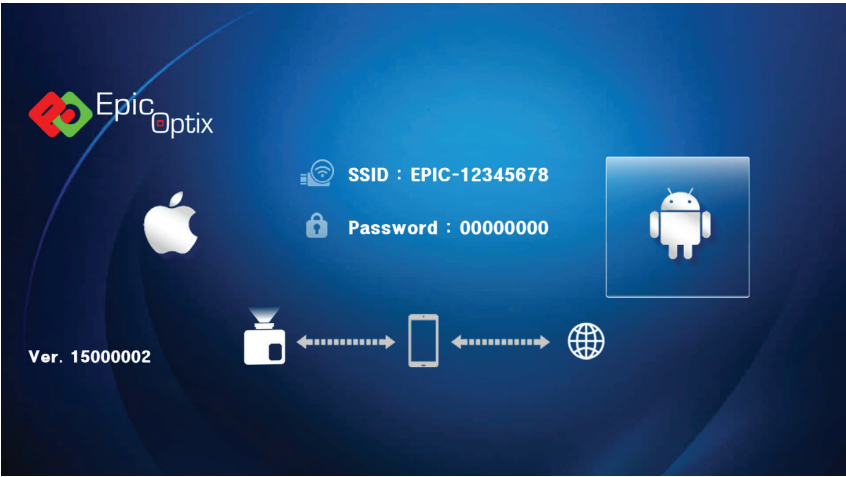
2. Power on HUD

Press HUD Power Button



Step 3

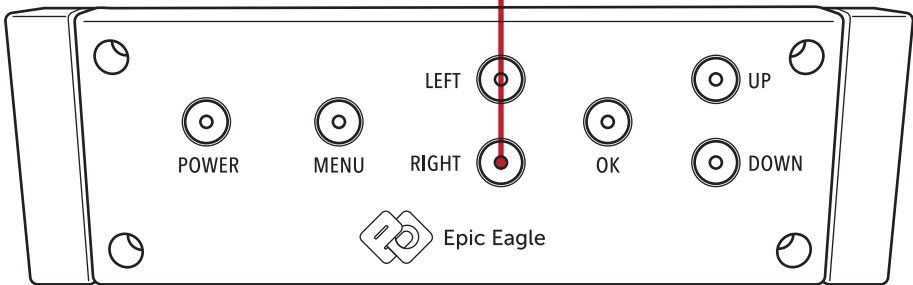
3. System is initialized when you see below:



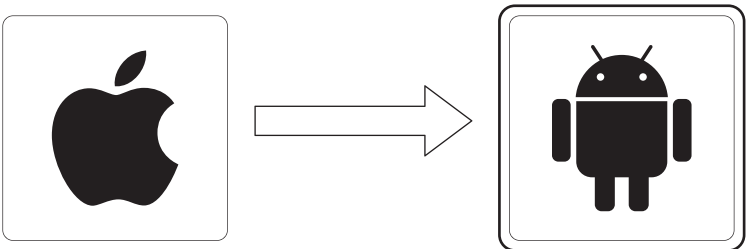
Step 4

4. Switch from iOS to Android by pressing “RIGHT” button.

a. Press HUD Power Button



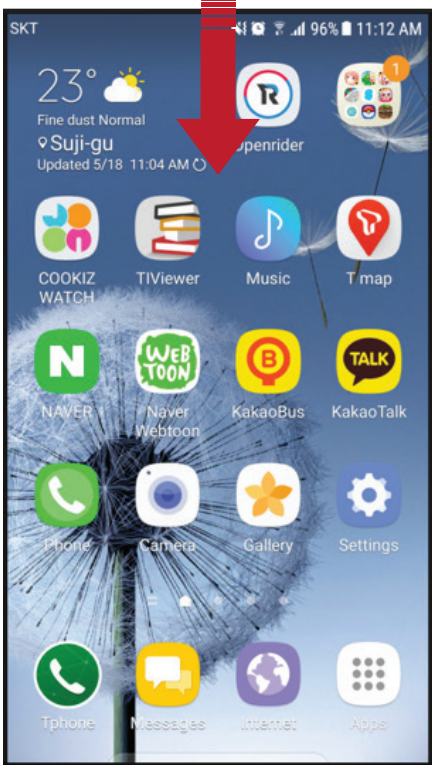
b. Android icon will become highlighted.



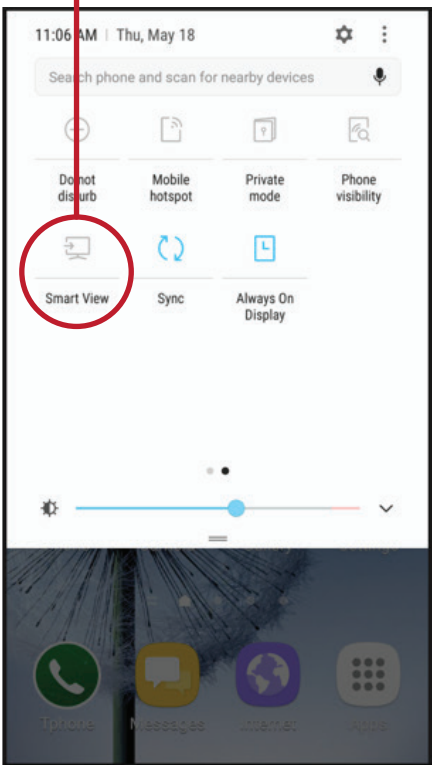
Step 5

5. Connect to your Android device* (Example is for Galaxy S7, Android Version 7.0)

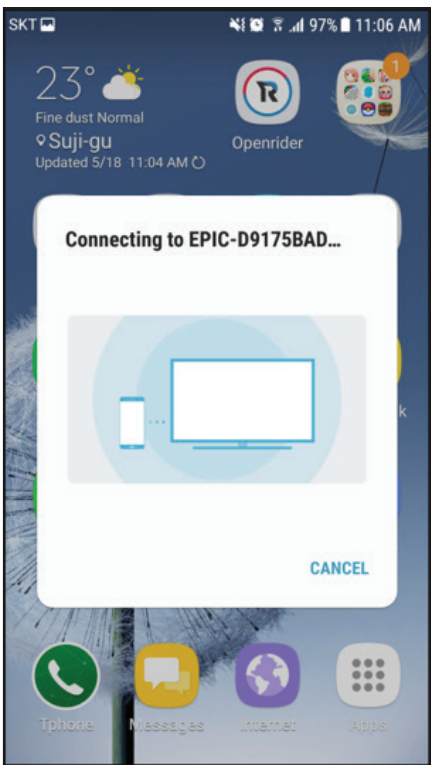
a. Swipe down



b. Tap “Smart View” icon



c. Connecting to HUD



*Check your Android User Guide as this will vary for each device.

Step 6

6. Launch your Navigation Android App.

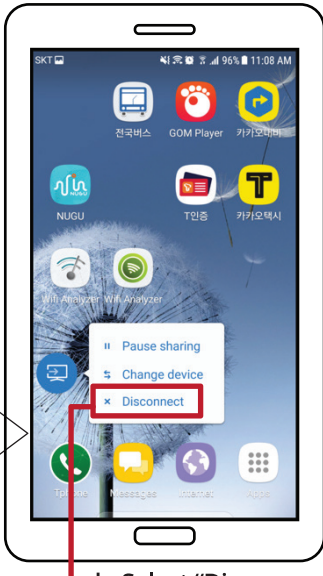


Step 7

7. Disconnect from your Android device* (Example is for Galaxy S7, Android Version 7.0)



a. Tap “Connect” icon



b. Select “Disconnect”

*Check your Android User Guide as this will vary for each device.



For additional questions and information please visit our website:
www.epicoptix.com/eagle

Class B Digital Device Note: This equipment has been tested and found to comply with the limits for a Class B digital device, pursuant to part 15 of the FCC Rules. These limits are designed to provide reasonable protection against harmful interference in a residential installation. This equipment generates, uses and can radiate radio frequency energy and, if not installed and used in accordance with the instructions, may cause harmful interference to radio communications. However, there is no guarantee that interference will not occur in a particular installation. If this equipment does cause harmful interference to radio or television reception, which can be determined by turning the equipment on and off, the user is encouraged to try to correct the interference by one or more of the following measures: reorient or relocate the receiving antenna; increase the separation from that to which the receiver is connected; consult the dealer or an experienced radio/TV technician for help.

WARNING!

We advise users to store the Epic Eagle HUD in an environment away from direct sunlight when not in use or for extended periods of time. When power is applied to the HUD, a cooling fan is activated. The operation of the fan enables the HUD to operate even in extreme heat from direct sunlight. When not powered, the fan does not run and it should be treated with the same care as you would any other consumer electronics device. Post flight, we recommend operators should take it off the glareshield and place back into the storage bag. We strongly recommend not leaving in a hot aircraft cabin for extended periods of time.



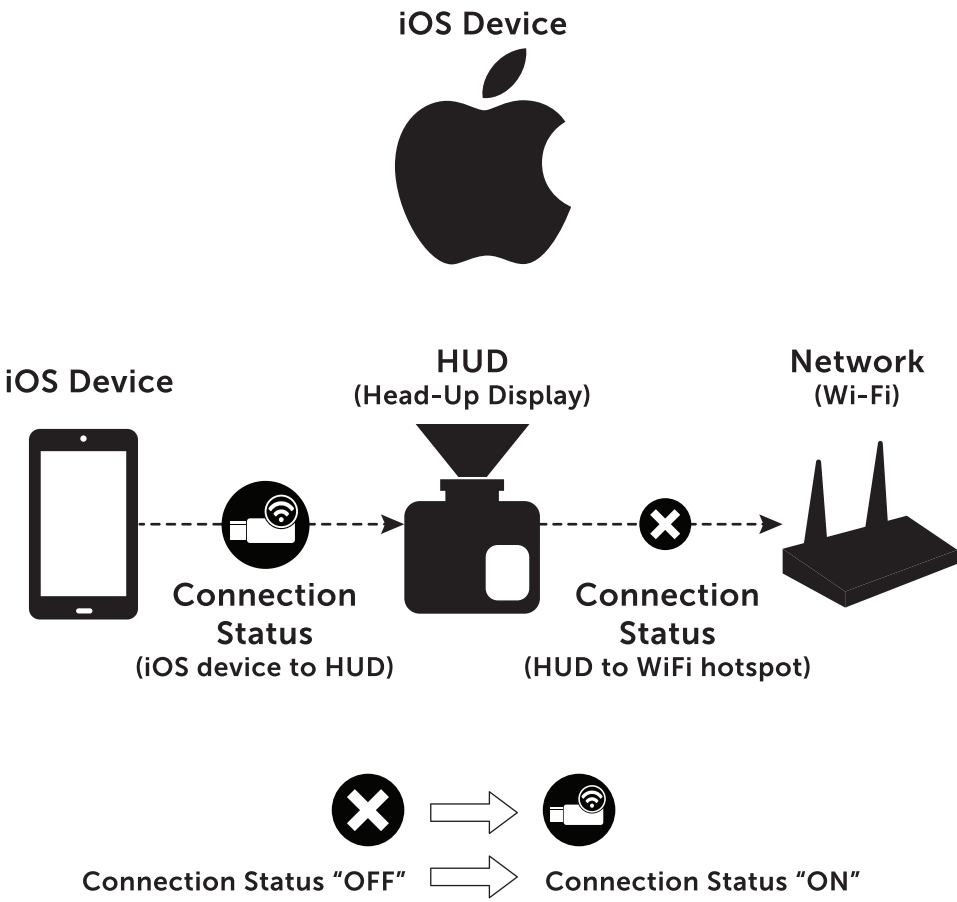
Epic Eagle 1

Quick Start Guide

For iOS Devices to Nav/GPS/ADS-B Device

Class B Digital Device Note: This equipment has been tested and found to comply with the limits for a Class B digital device, pursuant to part 15 of the FCC Rules. These limits are designated to provide reasonable protection against harmful interference in a residential installation. This equipment generates, used and can radiate radio frequency energy and, if not installed and used in accordance with the instructions, may cause harmful interference to radio communications. However, there is no guarantee that interference will not occur in a particular installation. If this equipment does cause harmful interference to radio or television reception, which can be determined by turning the equipment on and off, the user is encouraged to try to correct the interference by one or more of the following measures: reorient or relocate the receiving antenna; increase the separation from that to which the receiver is connected; consult the dealer or an experienced radio/TV technician for help.

Icon Guide



OPERATING INSTRUCTIONS

Step 1

1. Power on your Nav/GPS/ADS-B device.



Avidyne ADS-B Receiver

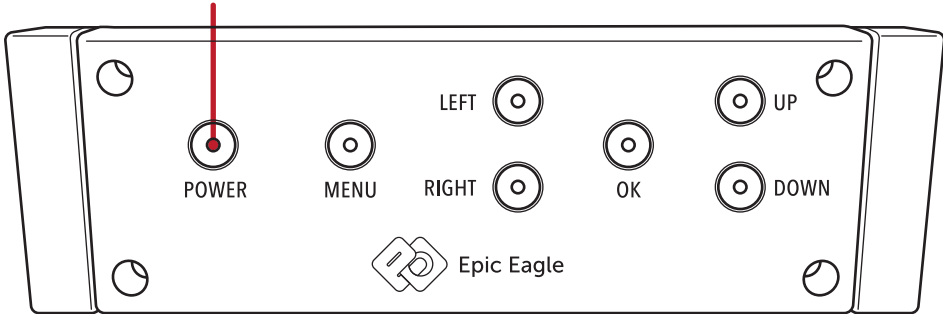


Stratus ADS-B Receiver

Step 2

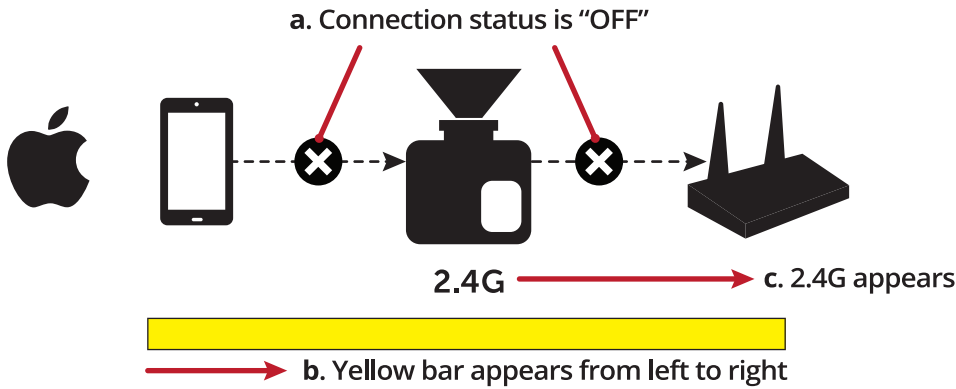
2. Power on HUD

Press HUD Power Button



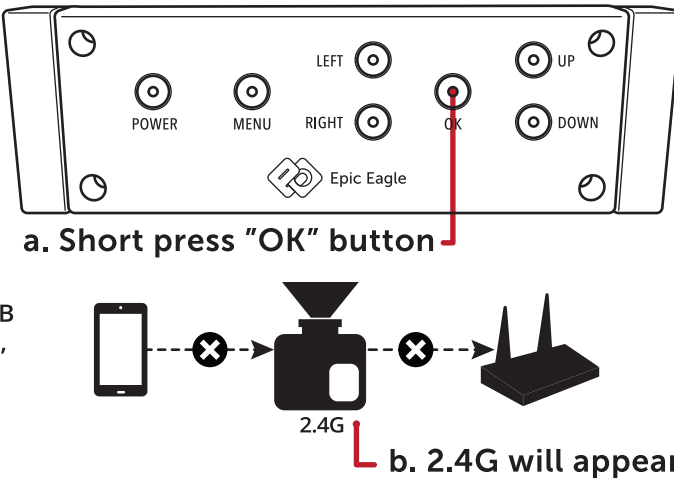
Step 3

3. System is initialized when you see below:



Step 4

4. If necessary, switch from 5G to 2.4G with a short press of the "OK" button*



Step 5

5. Tap on "Settings" on your iOS device.



iOS Device



Step 6

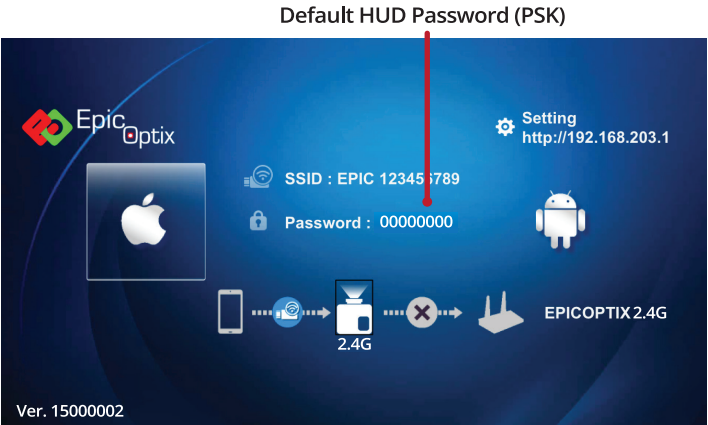
6. Tap "WiFi" and choose the Epic device in the "WiFi" network.



"EPICOPTIX 2.4G" will appear for ~10 seconds after connecting to wifi.

Step 7

7. Enter the HUD password (PSK).
The connection status from the iOS device to the HUD will be 
The connection status from the HUD to the WiFi hotspot will be 



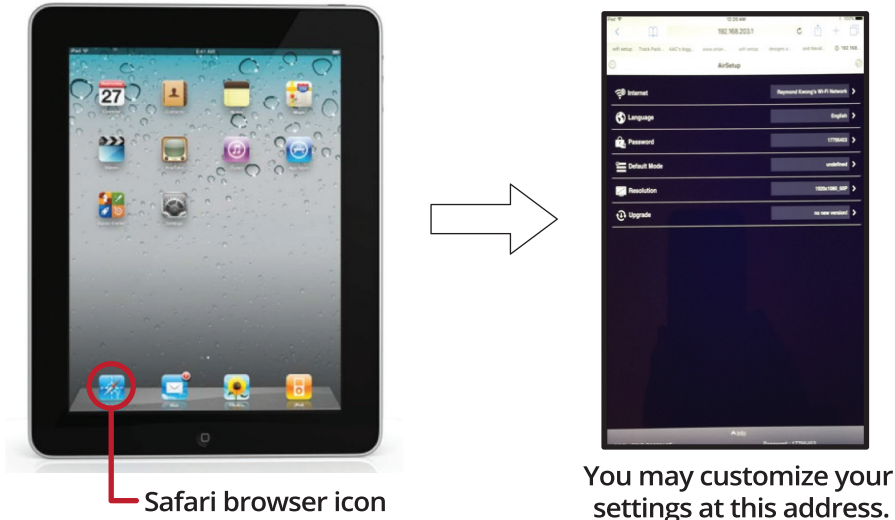
Step 8

8. Tap the “Home” button on your iOS device.



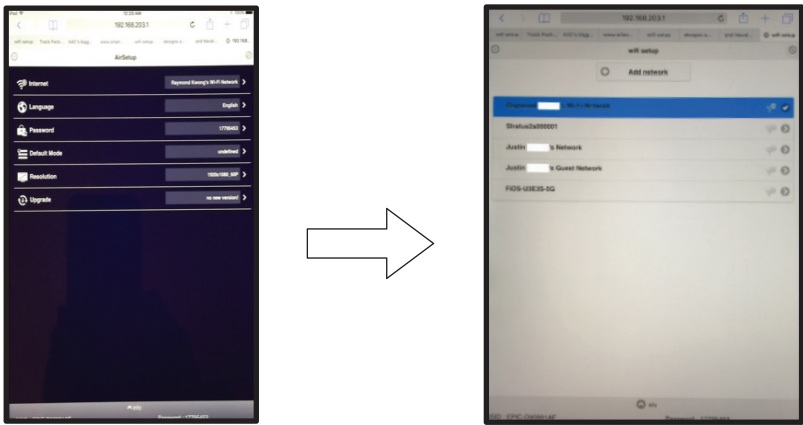
Step 9

9. Connect to your iOS device browser (Safari, Firefox, etc.) and Input IP address 192.168.203.1 .



Step 10

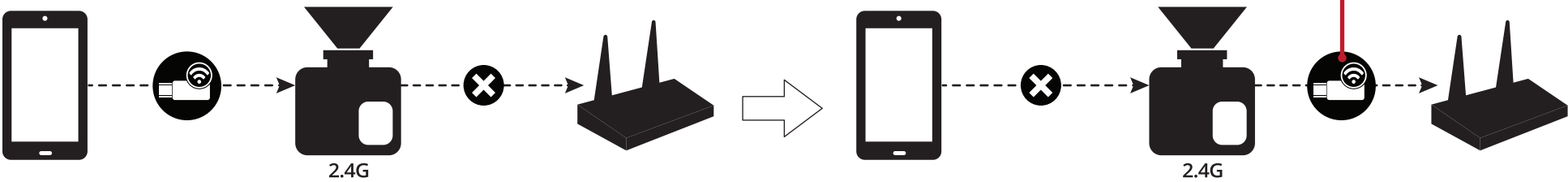
10. Establish your WiFi hotspot*
a. Tap “Internet” and wait for a list of networks to appear.
b. Tap on your Nav/GPS/ADS-B Network.



* If it is a secure device, input the correct PW to connect to Nav/GPS/ADS-B device.
If you do not see your Nav/GPS/ADS-B Network, tap the “Refresh” button at the top right of the screen.

Step 11

11. The HUD has connected to your Network WiFi hotspot when  changes to  HUD is connected to hotspot



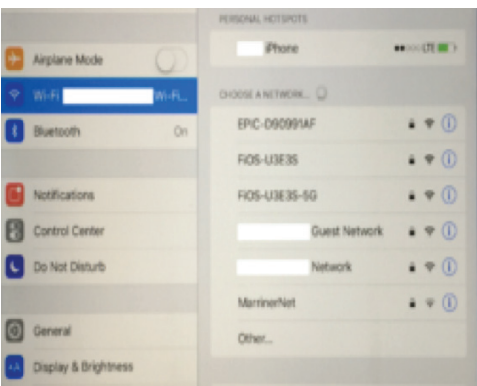
Step 12

12. Exit your iOS browser by tapping the Home button of your iOS device.



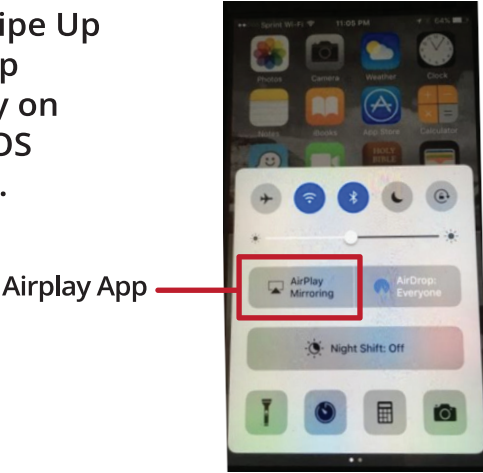
Step 13

13. In your iOS Settings tap the Wifi bar. Then choose the Nav/GPS/ADS-B network.



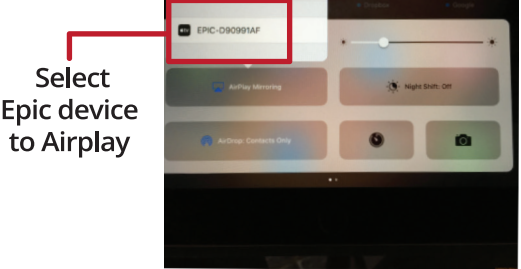
Step 14

14. Swipe Up and tap Airplay on your iOS device.



Step 15

14. Swipe Up and tap Airplay on your iOS device.



Step 16

16. Tap the Home button of your iOS device.



Step 17

17. Launch your Navigation iOS App.



RF Exposure: A distance of 20 cm shall be maintained between the antenna and users, and the transmitter may not be co-located with any other transmitter or antenna.