

US Tech Test Report:
FCC ID:
Test Report Number:
Issue Date:
Customer:
Model:

FCC Part 15 Certification
2ANM6CMPB2GC395915
17-0364
September 29, 2017
Custom Molded Products
26400-009-000

INTERNAL PHOTOGRAPHS



Figure 1- Cover Removed

US Tech Test Report:
FCC ID:
Test Report Number:
Issue Date:
Customer:
Model:

FCC Part 15 Certification
2ANM6CMPB2GC395915
17-0364
September 29, 2017
Custom Molded Products
26400-009-000

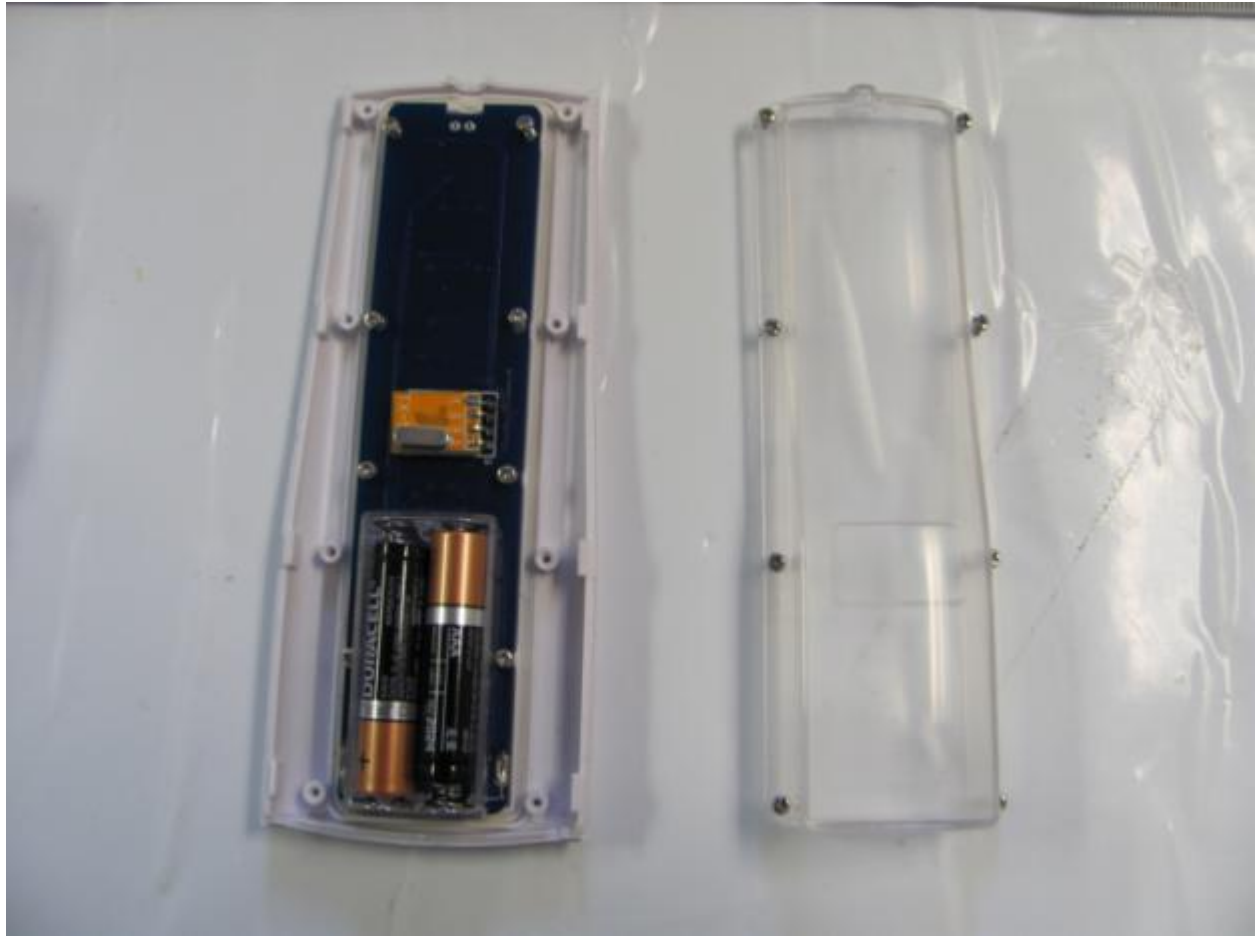


Figure 2- Secondary Cover Removed

US Tech Test Report:
FCC ID:
Test Report Number:
Issue Date:
Customer:
Model:

FCC Part 15 Certification
2ANM6CMPB2GC395915
17-0364
September 29, 2017
Custom Molded Products
26400-009-000

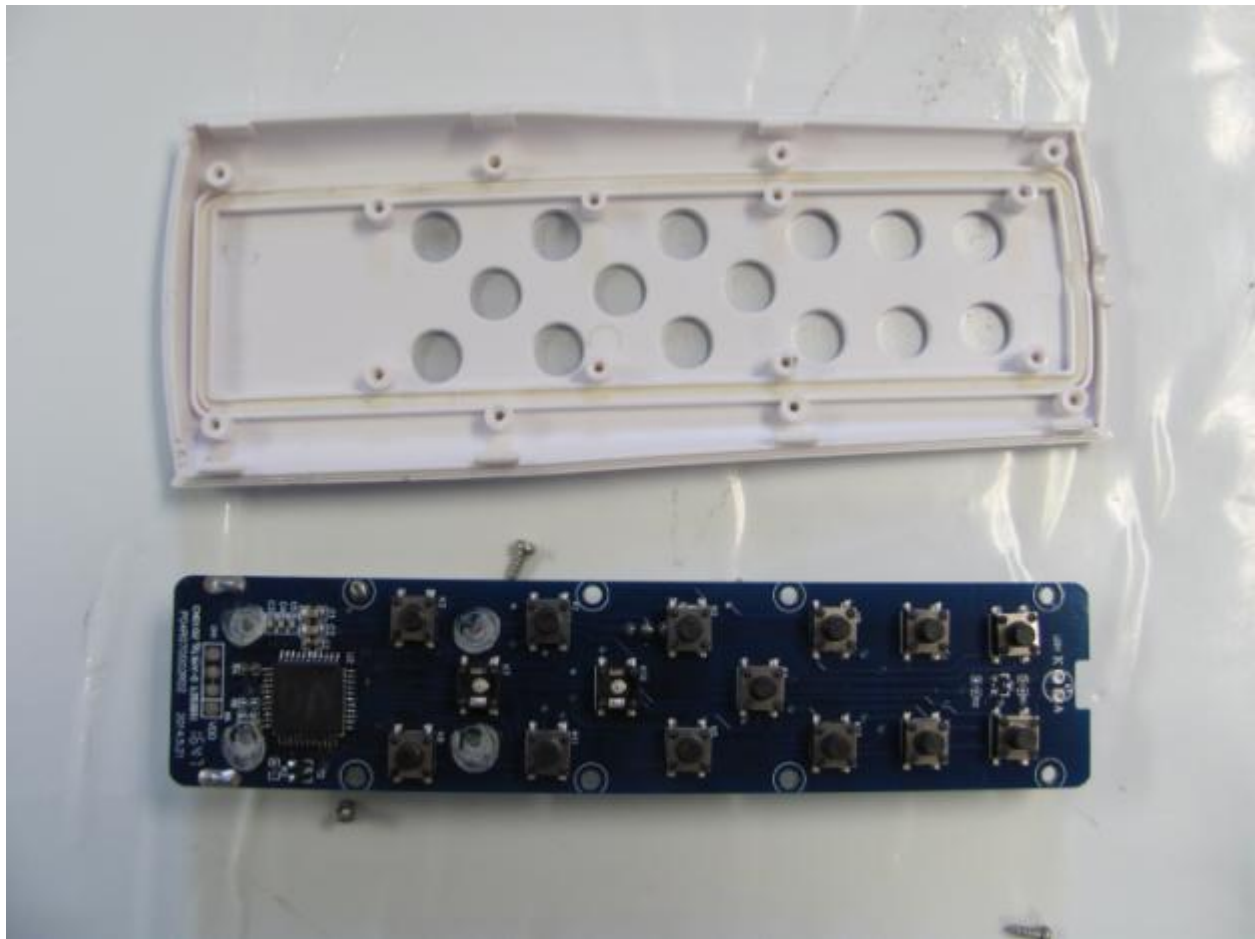


Figure 3- PCB Removed

US Tech Test Report:
FCC ID:
Test Report Number:
Issue Date:
Customer:
Model:

FCC Part 15 Certification
2ANM6CMPB2GC395915
17-0364
September 29, 2017
Custom Molded Products
26400-009-000

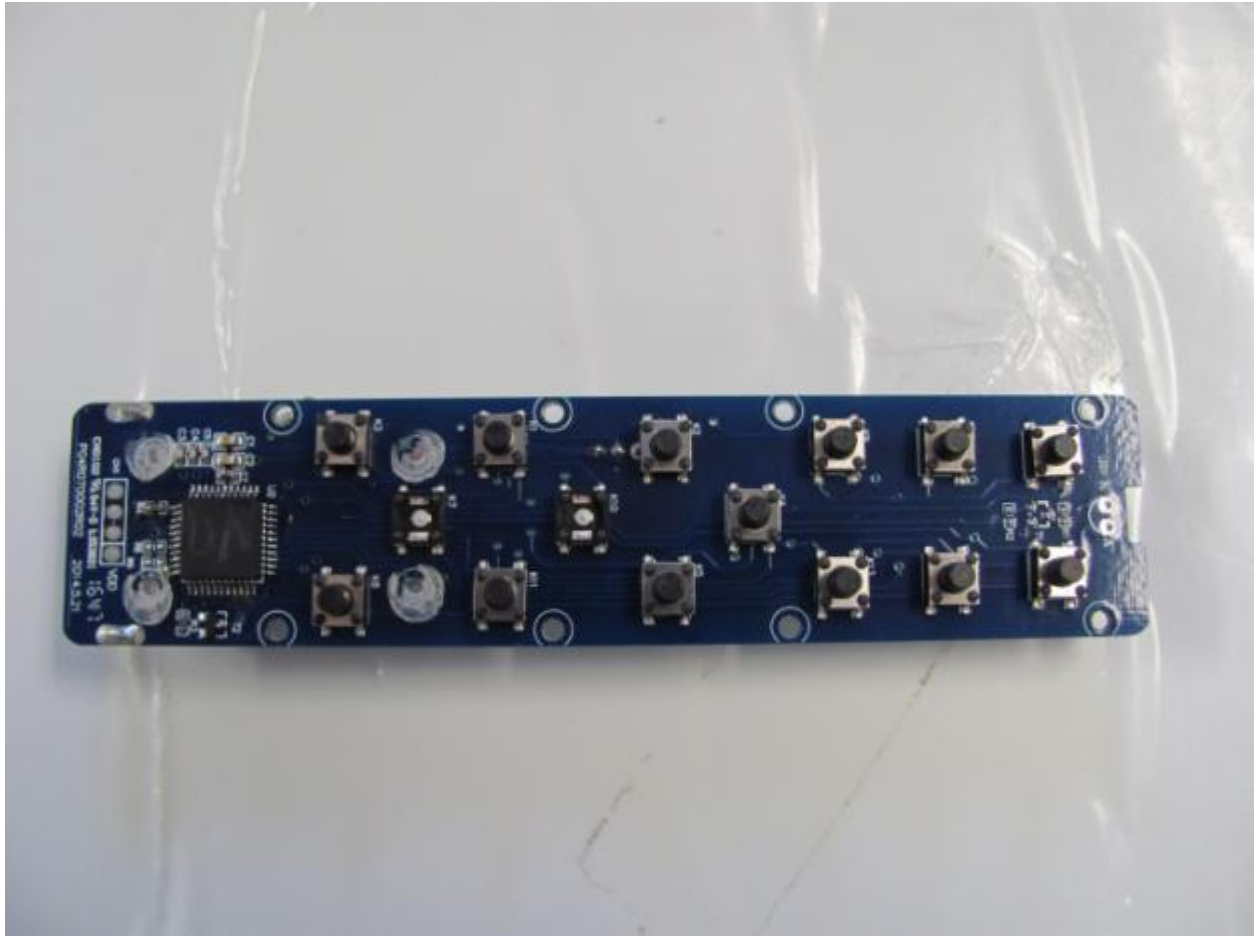


Figure 4- PCB Component Side

US Tech Test Report:
FCC ID:
Test Report Number:
Issue Date:
Customer:
Model:

FCC Part 15 Certification
2ANM6CMPB2GC395915
17-0364
September 29, 2017
Custom Molded Products
26400-009-000

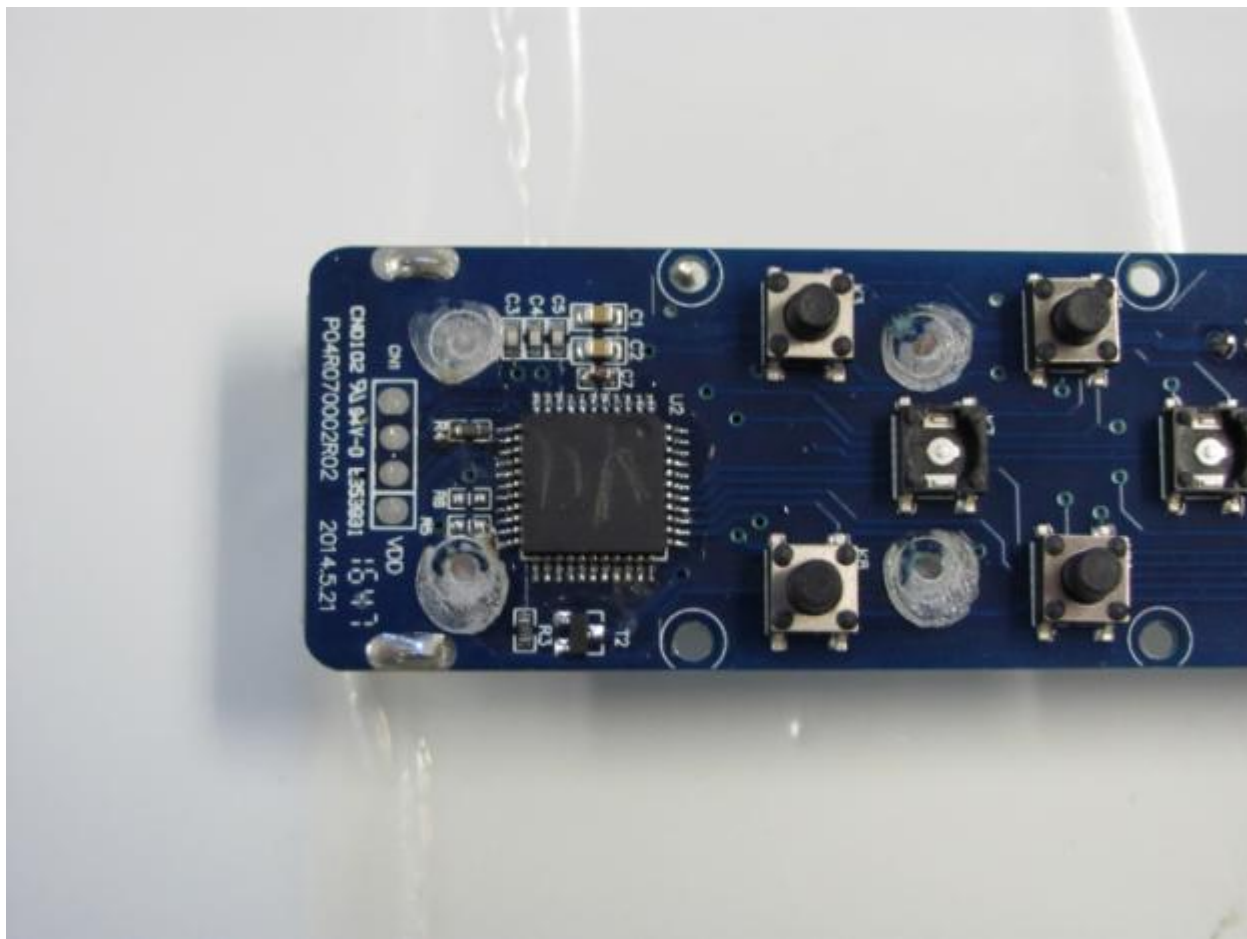


Figure 5- PCB Component Side (Lower Section)

FCC Part 15 Certification
2ANM6CMPB2GC395915
17-0364
September 29, 2017
Custom Molded Products
26400-009-000

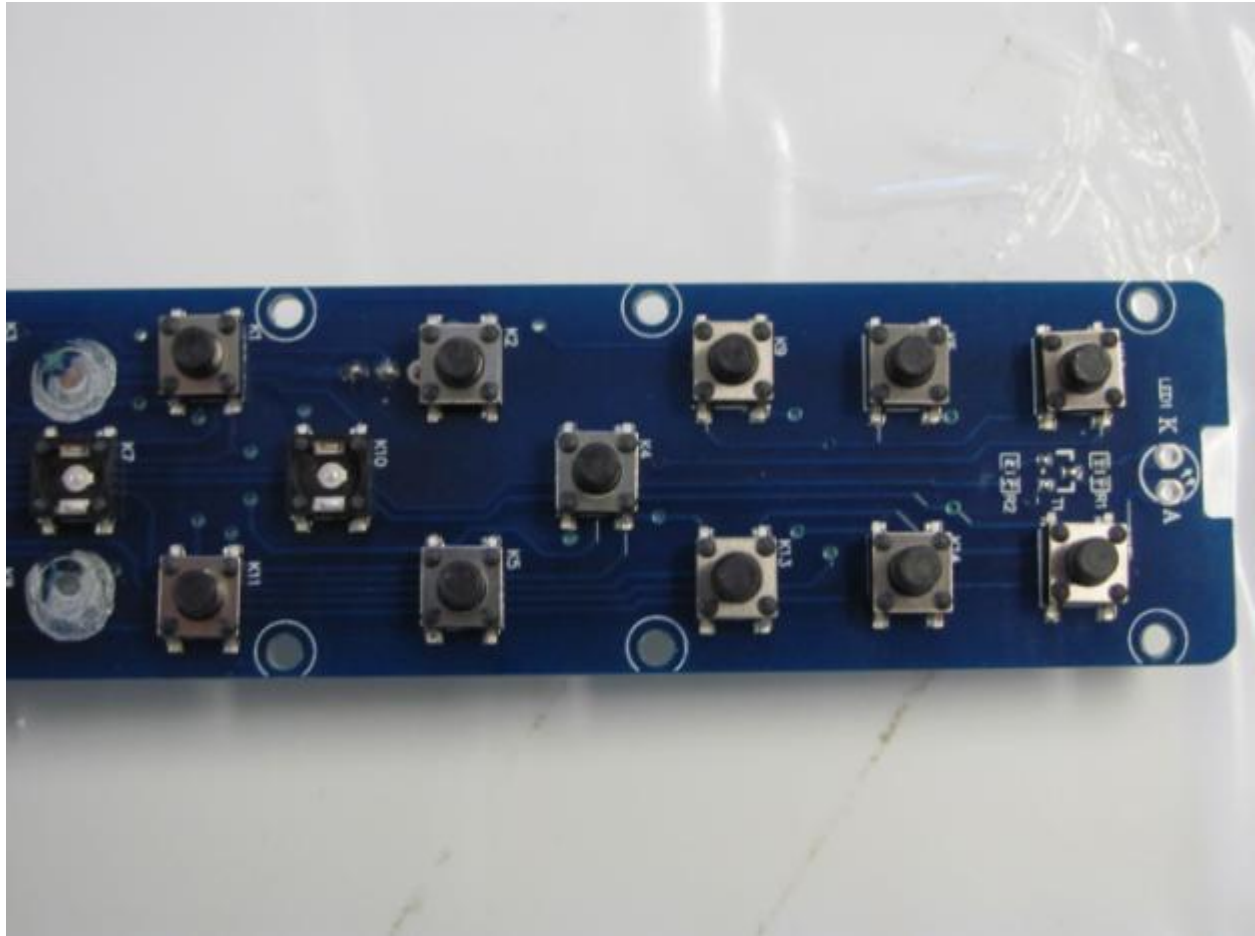


Figure 6- PCB Component Side (Upper Section)

US Tech Test Report:
FCC ID:
Test Report Number:
Issue Date:
Customer:
Model:

FCC Part 15 Certification
2ANM6CMPB2GC395915
17-0364
September 29, 2017
Custom Molded Products
26400-009-000



Figure 7- PCB Rear Section Batteries Removed

Trace Antenna

US Tech Test Report:
FCC ID:
Test Report Number:
Issue Date:
Customer:
Model:

FCC Part 15 Certification
2ANM6CMPB2GC395915
17-0364
September 29, 2017
Custom Molded Products
26400-009-000

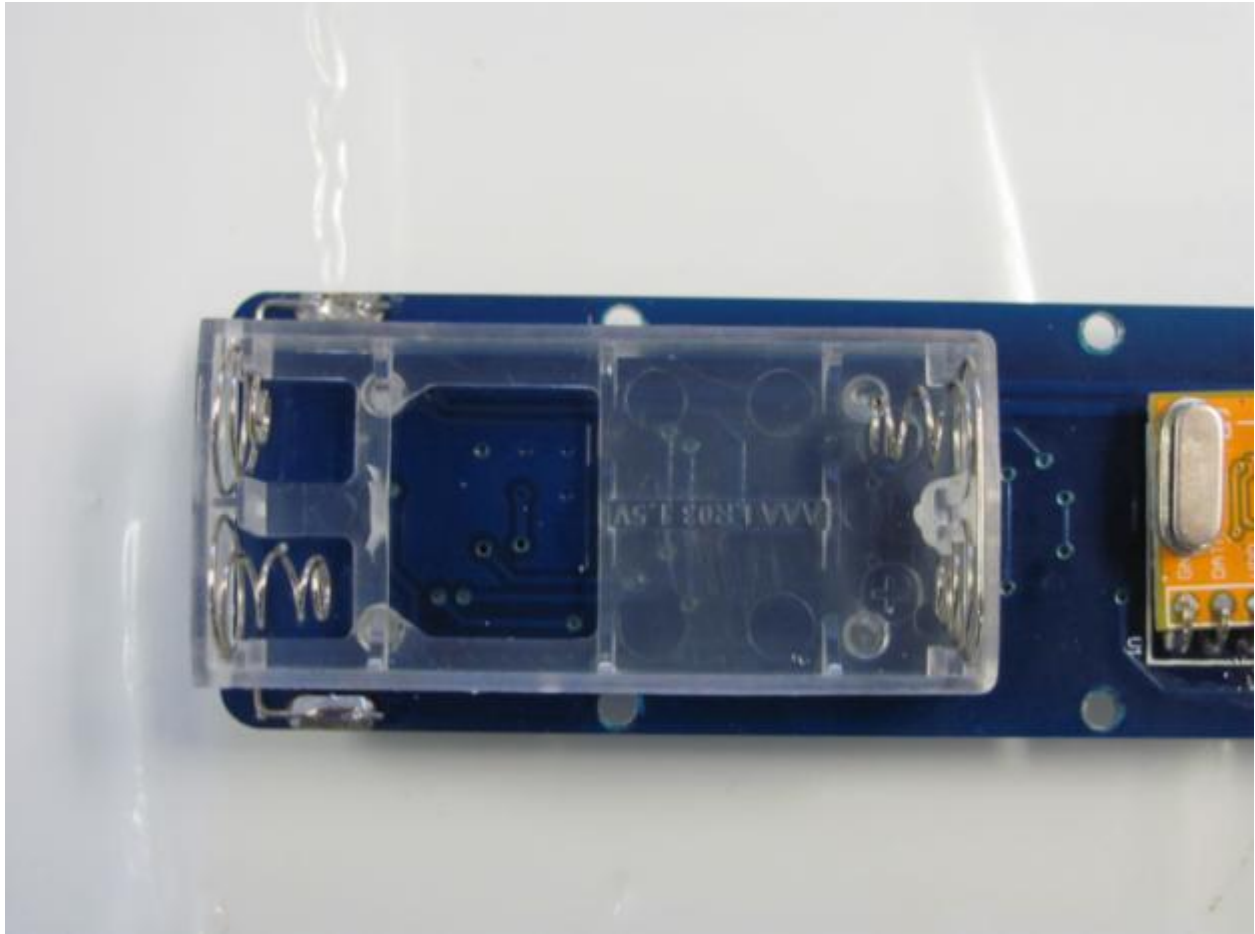


Figure 8- Battery Compartment

US Tech Test Report:
FCC ID:
Test Report Number:
Issue Date:
Customer:
Model:

FCC Part 15 Certification
2ANM6CMPB2GC395915
17-0364
September 29, 2017
Custom Molded Products
26400-009-000

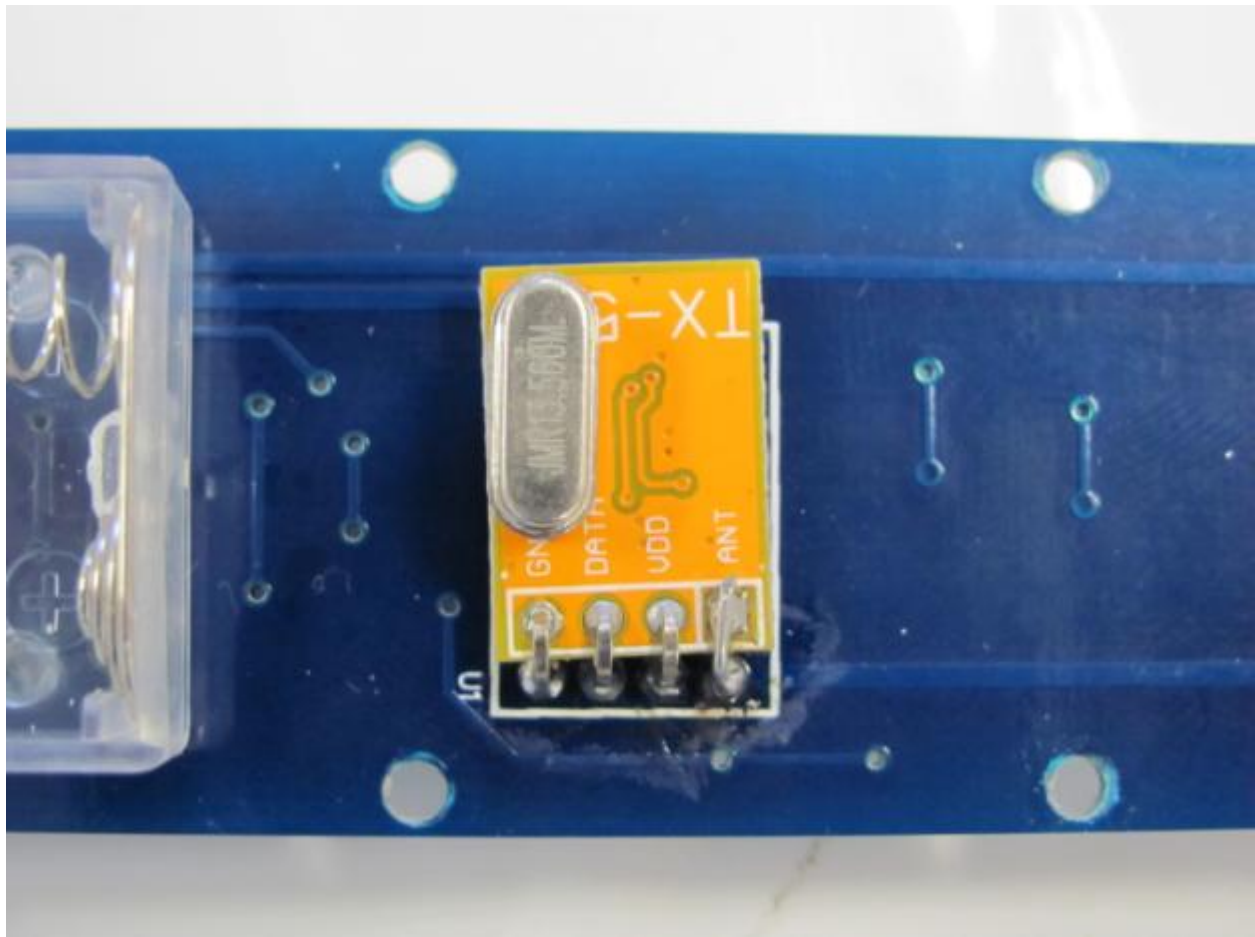


Figure 9- TX-5, 433 Mhz Radio Transmitter Board

US Tech Test Report:
FCC ID:
Test Report Number:
Issue Date:
Customer:
Model:

FCC Part 15 Certification
2ANM6CMPB2GC395915
17-0364
September 29, 2017
Custom Molded Products
26400-009-000

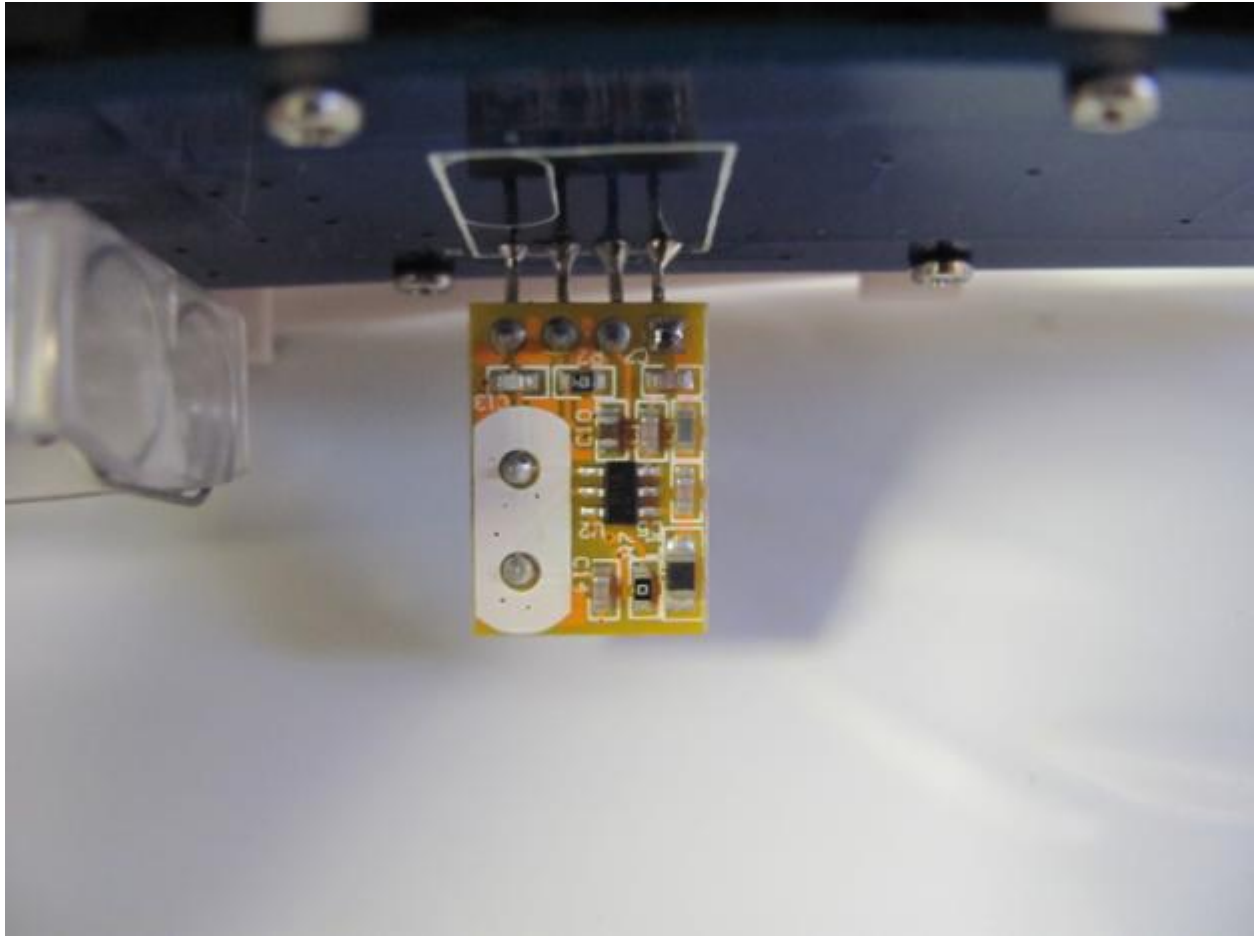


Figure 10- TX-5, 433 MHz Radio Transmitter Board (Component Side)