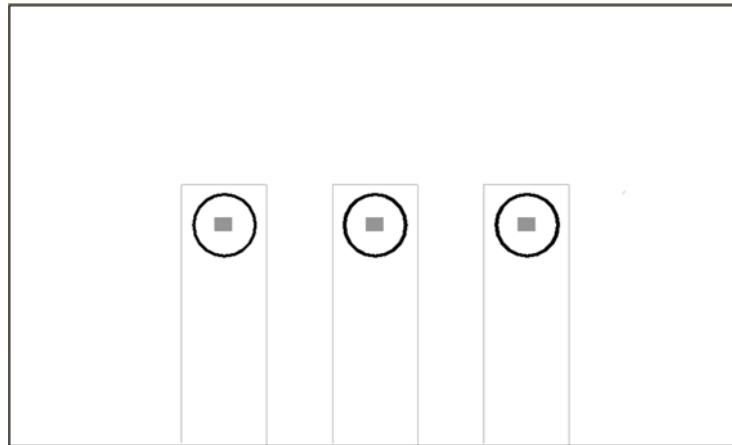


Wireless WIFI Smart Plug

Model: LX-WIFI-03O



Product Parameter:

size: 120mm x 72mm x 36mm(Install bottom case depth>29mm)

Product weight: 170 g

Input Voltage: 90-250V AC 50/60Hz

Load Current: 2A/250V/circuit

Wireless Standard: Wi-Fi 2.4GHz b/g/n

Material: Flame Retardant ABS V0 level+toughened glass panel

Please check the following items before using the equipment:

.Your smartphone or tablet is connected to a 2.4G WIFI network that can access the Internet, and the signal can not be too weak!

.Use mobile phone or tablet with android system, the system must be 4.0 or later.

.If you use an iphone or iPad, it must be able to access the APP store and download APP.

.If your wireless router has set up the MAC address filter, please turn off the router MAC address filtering function first.

.The device supports the following encryption methods:

AUTH_OPEN

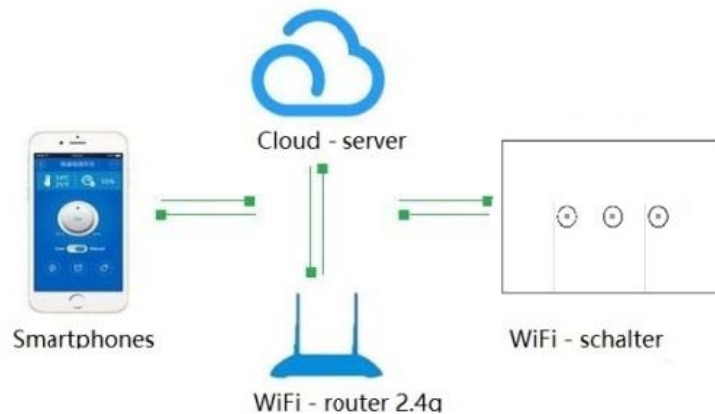
AUTH_WEP,

AUTH_WPA_PSK,

AUTH_WPA2_PSK,

AUTH_WPA_WPA2_PSK,

WPA2/CCMP is not supported, please know that!



Note: the device does not support the 5G signal temporarily!!!!

Product instructions

1. Search for "eWeLink" or sweep code to download and install in major application markets.



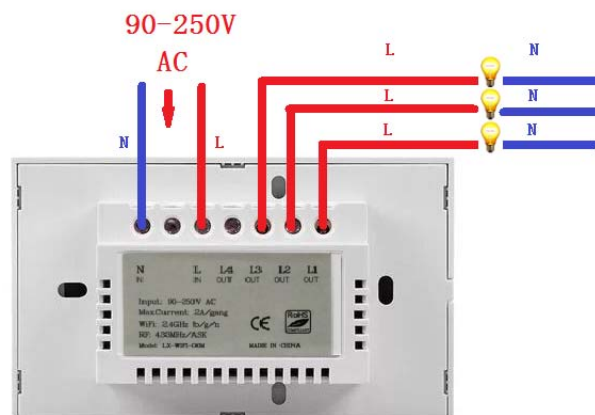
Scan to download eWeLink free APP

2. If it has prompt permission request in the installation process, please select permission.
3. Register the account and log in "eWeLink". (Support email registration, some countries support mobile phone registration, if you can not get the registration code, please contact the software support or sellers.)
4. Please strictly follow the instructions on the back of the casing to connect wire correctly. **This switch must be powered by zero firewire. When you install the wiring, you must first power off! So as to avoid electric shock accident!!**

Note: the switch principle of this equipment is to realize on and off of the fire wire through the relay control circuit, so as to control the work or stop of the electric appliance. The equipment must be powered by zero FireWire, so the equipment can work properly.



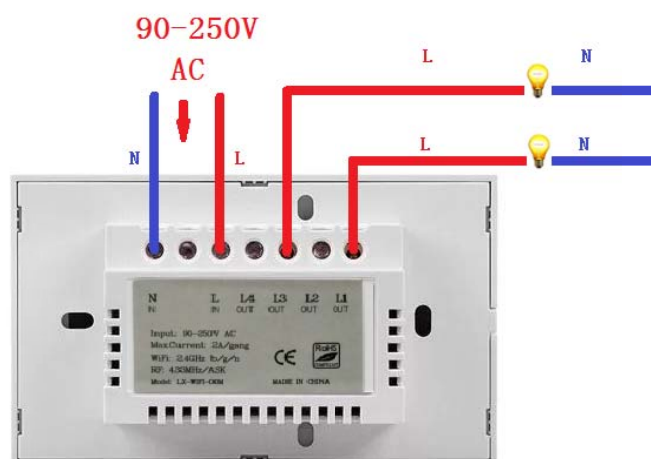
4.1 The correct connection to replace the wall switch and control the lamps (take route 3 as an example).



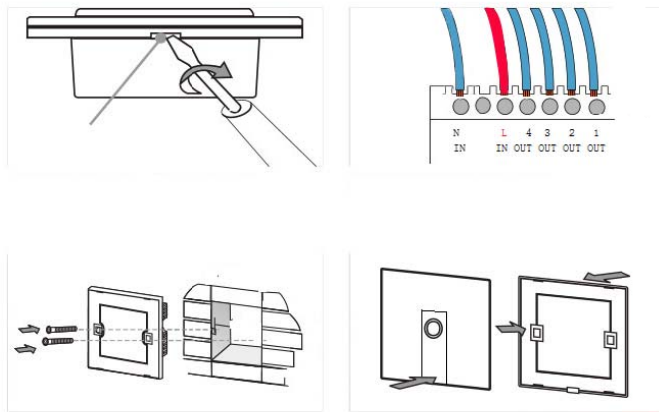
4.2 The correct connection to control of electrical appliances less than 600W (take route 1 as an example).



4.3 The correct connection of switch in route 2.

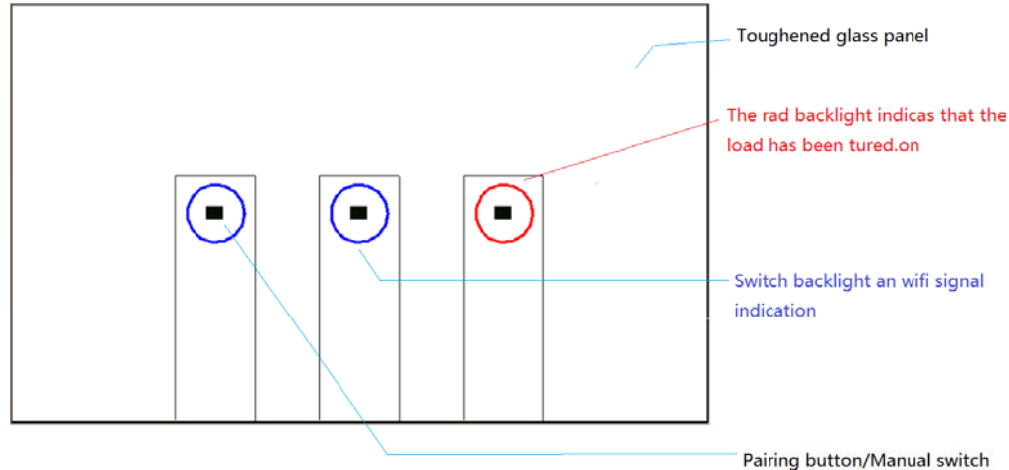


5. Use a screwdriver to pry the panel, connect the wire lock screw to the bottom shell, and then cover the panel. Electrify the switch when it is installed. Wait a moment, you can manually touch to realize on and off. (When control switch by touching, the touch frequency should not be too fast, the switch comes with output delay protection, touch up to once in one second.)



6. There is a backlit indicator in the switch panel touch button position, blue backlight is Wifi signal instructions, and the blue backlight has a multi-mode to indicate the working state of the WIFI. (Slow flash when it just connects to the power, flash when it adds configuration, long bright after it adds the configuration successfully)

Note: When the touch button backlight is red all the time, the blue backlight is extinguished, so it is impossible to determine the working state of the Wifi! When adding equipment, be sure to do it in blue backlight!!



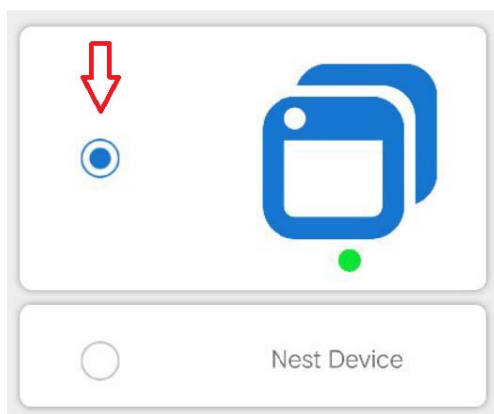
Before adding the device, please make sure that the distance between the router and the device is not too far, it is recommended within 10 meters. Otherwise, the Wifi signal will be weak and device will not be added or device will drop.



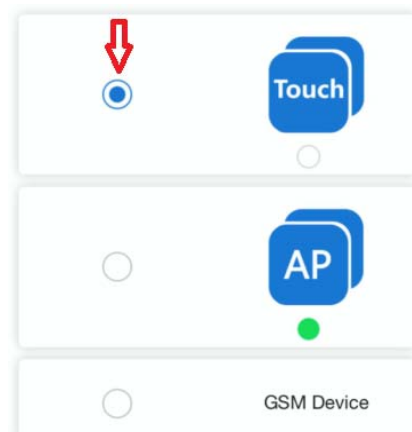
7. Add configuration device

Step one: **In the blue backlight state**, Press and hold any of the buttons for about 7 seconds until the blue backlight flashes (flashes twice for one second) and then release the hand.

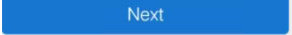
Step two: Logon "eWeLink" with your smartphone, click the Add button on the APP interface.



Android



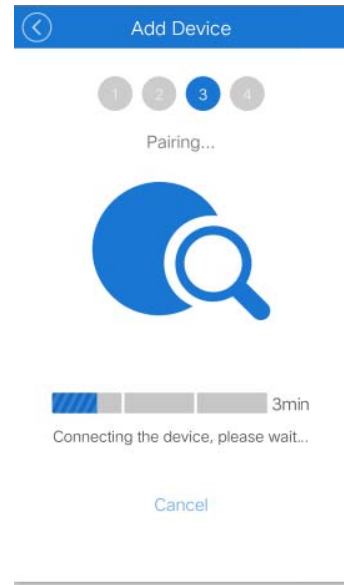
IOS

Step three: select the default, click on the "next" .

Input the Wifi password that your phone currently connected to, and then click "next" to enter the add configuration. (**Take single channel equipment as an example**)



A

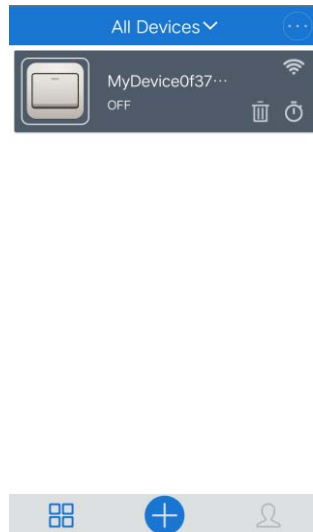


B

7.1 Wait for the completing of step three and you can name the device, and the add is compeled. **At this point, the blue backlight changes from blinking to normal light.** **If the device is not online, please wait for two minutes. The device is trying to connect to your cloud server via your wireless router.** When the APP display that device is connected successfully, you can use the phone to remote control. If APP still display that the device is offline, please re-enter the APP.



1



2



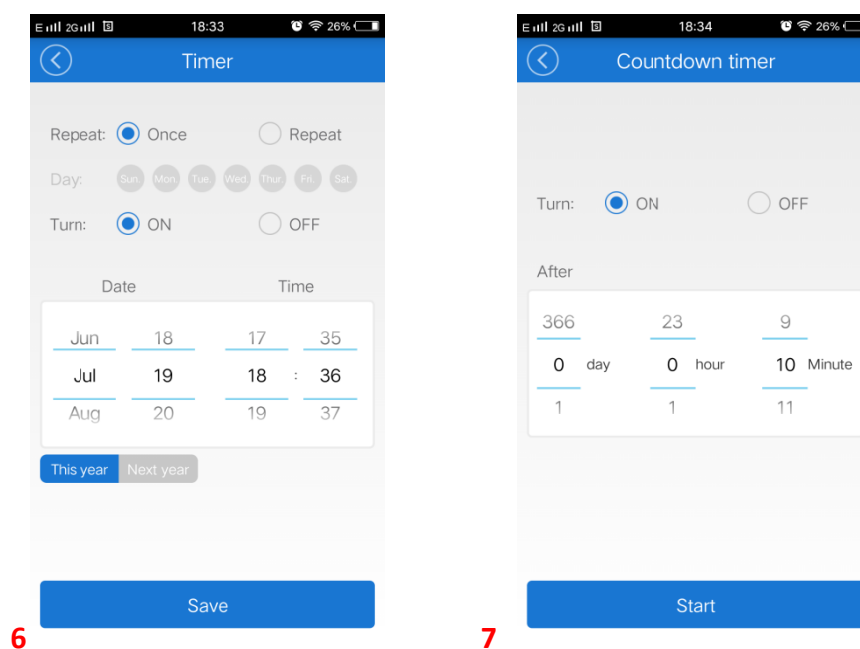
3



This interface has a rich set of functions and control keys. Click on the switch icon to implement on and off of lamps and so on. Even if you manually touch the control switch, APP will also display the current switch status of the lamp in real time.

8. Sharing function: The main account (the first account added to the device) can share the device to a friend and achieve multi-person joint control. The shared account must be a registered Yiweilian account, and keep it online when it is shared (the phone screen must be lit). At the same time you can check the timer permissions (newly added, modify, delete, enable)

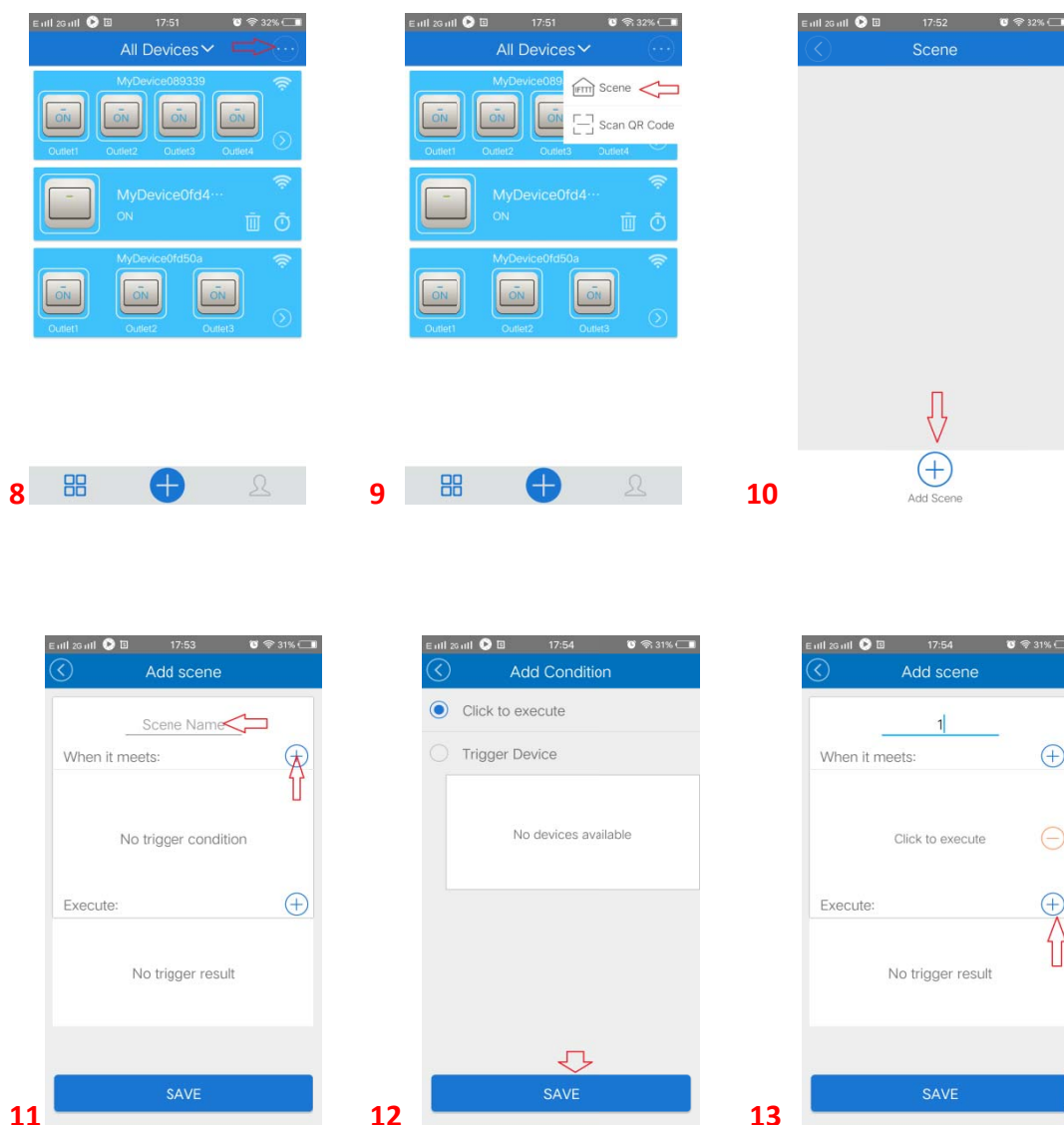
9. Multi-mode timing and off-line execution function: the device supports up to 8 groups of timer switch, it has a single, repetitive and delayedfast timing and other modes. The device can still perform a set-up timer switch in the event of a disconnection, but it needs to keep the device uninterrupted. Figure 6 is the timer setting interface, Figure 7 is the delay setting interface.

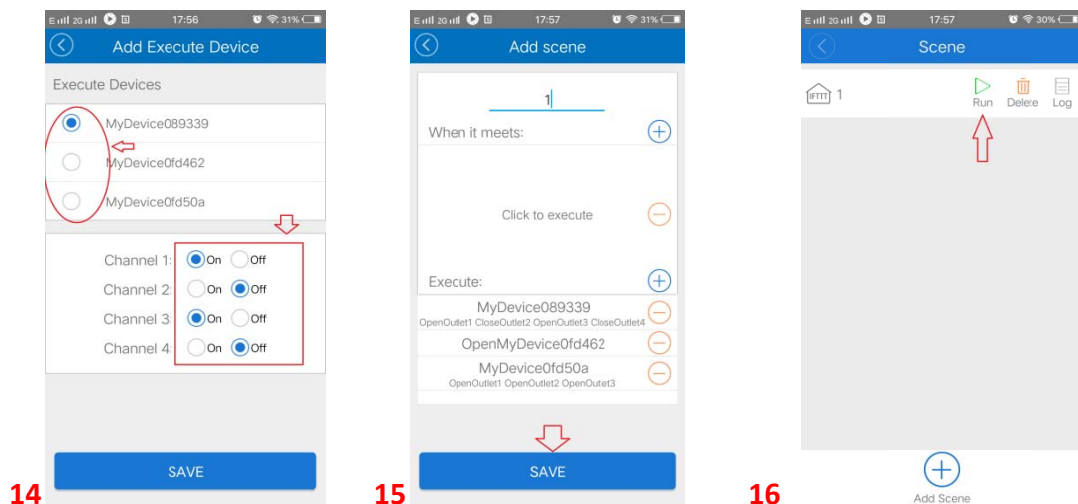


10. **Scene:** you can set up a common scene or an intelligent scene. A common scene allows you to fully open or close the equipment in the scene with one key. Intelligent scenes use other temperature and humidity sensing equipment as a trigger condition, when the conditions are met, the device will be triggered to start or shut down.

Please go to the device list, click the scene in the upper right corner, add the name of the scene, and execute the conditions (click on the execution / linkage condition device), execute open or close. Click the "Execute" to execute a normal scene.

10.1 Scene setting flow chart: Click the red arrow button (**Take an common scene as an example**)





11. When the interface appears

Firmware can be upgraded, please go to device setting to update firmware



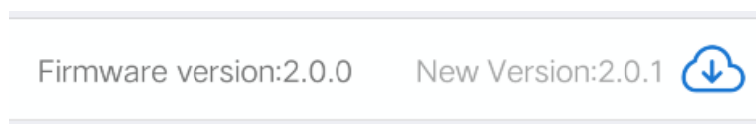
Click the upper right corner



17

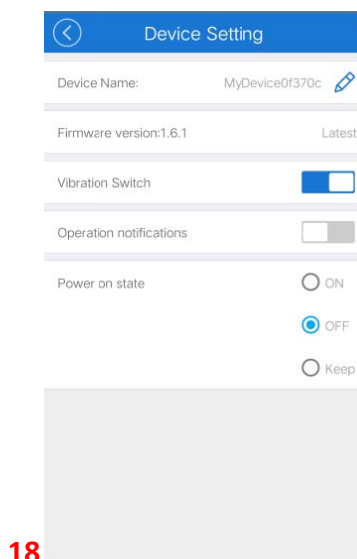
You can

see the firmware version update information from the menu settings



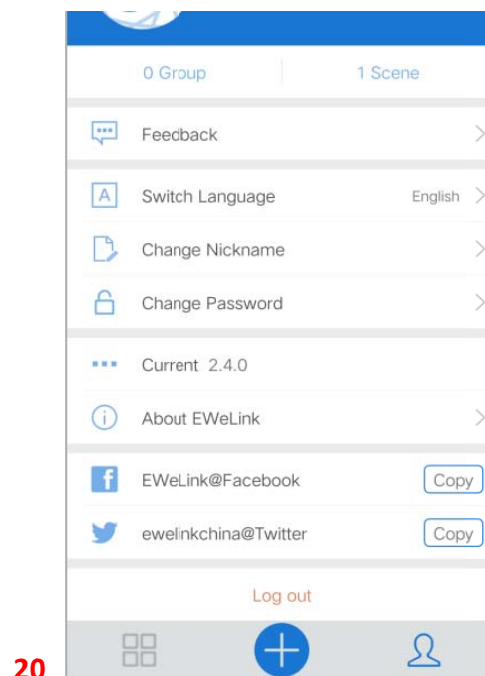
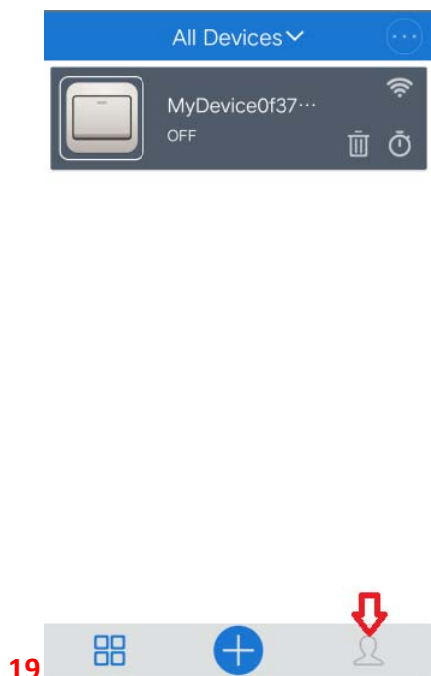
Click and update the

latest version of the firmware.6This page can also modify the device name, set up the work state of being switched on again after power off and so on.



12. Device security mechanism: the device can only be added to an account (main account), other accounts can not add the device, which needs the master account to delete the device or share. While sharing, you can also set the timer task permissions for it, please check according to demand.

13. APP language switch: APP will automatically identify the user's mobile phone system voice and display the corresponding language version. You can manually switch the multi-language version in the user center.



14. The device supports ALEXA voice correlation control: scan two-dimensional code to read detailed tutorial.



ALEXA Voice control tutorial

14.1. If the device you purchased is a Wifi2.G + RF433MHz dual band product, please scan the two-dimensional code to read the RF433MHZ pairing tutorial. But the WIFI2.4 products please ignore!



RF433Mp Companion tutorial

Note: This equipment has been tested and found to comply with the limits for a Class B digital device, pursuant to part 15 of the FCC Rules. These limits are designed to provide reasonable protection against harmful interference in a residential installation. This equipment generates, uses and can radiate radio frequency energy and, if not installed and used in accordance with the instructions, may cause harmful interference to radio communications. However, there is no guarantee that interference will not occur in a particular installation. If this equipment does cause harmful interference to radio or television reception, which can be determined by turning the equipment off and on, the user is encouraged to try to correct the interference by one or more of the following measures:

- Reorient or relocate the receiving antenna.
- Increase the separation between the equipment and receiver.
- Connect the equipment into an outlet on a circuit different from that to which the receiver is connected.
- Consult the dealer or an experienced radio/TV technician for help.

Caution: Any changes or modifications not expressly approved by the party responsible for compliance could void the user's authority to operate this equipment.

FCC Radiation Exposure Statement:

This equipment complies with FCC radiation exposure limits set forth for an uncontrolled environment. This transmitter must not be co-located or operating in conjunction with any other antenna or transmitter. This equipment should be installed and operated with a minimum distance of 20cm between the radiator and your body.

15. Common problems and Solutions FAQ

- ✧ **.When the device is added successfully, why does the device appear offline and can not be controlled?**

Answer: After the device has just been added successfully, it will take one or two minutes to connect to your router and connect to the internet. If it is still outline for a long time, please remove the panel and maybe the signal is blocked.

If it still does not connect, please check whether there is Chinese in your WIFI name or password error, or equipment is too far from the router, and the signal is weak, it is possible that the environment has electromagnetic interference. Please switch the router closer to the device or delete the device and add it again. If the situation remains the same, please make sure your wireless router can access the Internet without using the MAC address filter. Please power off the device then power up, delete the device and add it again.

- ✧ **When you search to add equipment, after many attempts it still failed to add successfully, how to do it?**

Answer: It may be frequent additions that cause the phone cache do not have enough time to refresh. Please turn off the mobile WLAN function first, and then turn on the mobile WLAN function later. At the same time, power off the device and restart, and then try to add. In addition, the device can not recognize the 5G router. Please use the 2.4G WIFI wireless router. If the device is added too much, please use the wireless router with strong signal, high bandwidth, high speed.

- ✧ **Can I use LAN to control? Can I connect directly to device hot spot to control?**

Answer: The product does not support LAN control, the WIFI you used must be able to access the Internet.

- ✧ **What should I do if the device will turn on and off automatically?**

Answer: It may be that the switch is not installed smoothly, there is a gap between the glass panel and the backlight plate. First power off the switch and install it smoothly, cover the glass panel and then power.

Tips: Do not let the switch long run in the state of network breaking, the self power consumption of switch under the state of network breaking will increase, affecting the service life!!

- ✧ **The equipment light doesn't work? There is no response when power on? The relay doesn't work when press the switch button?**

Answer: May be the circuit damage, please return to us for detection. If you disassemble yourself and cause it to be damaged, or modify and re-bur firmware arbitrarily, cause the device firmware is lost or damaged. Once discovered, we do

not provide any after-sales service, and you must bear all the losses and expenses.

- **If the blue backlight flash twice in a second: This means that the device has been connected to the WIFI but not connected to the external network, please confirm whether the external network that your WIFI is currently connected to is stable and normal. If it is sometimes good and sometimes bad, and frequently appear this double flash situation, that indicates that your network is unstable and it is not caused by the product.**

- **For other questions, please submit a feedback on APP, we will reply to you as soon as possible during the working day. If you encounter any quality problems, please contact the seller. Thank you for your use!**

- **If you forget the account associated with the device, you can reset the device to the factory model, and re-use the product. Specific settings: 1. Press and hold the switch, touch the button for five seconds, the blue backlight will flash three times and off once, release the hand, and then hold the switch and touch button for five seconds, the blue backlight will continue to flash quickly. 2. Open the phone's wireless network, find the hot is ITEAD-10000xxxx, send this ID to us, we will deal with it.**

If you want to return, you must delete the device on the APP, otherwise it will leak the user information!!