

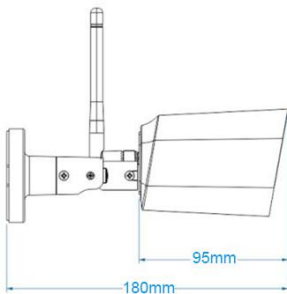
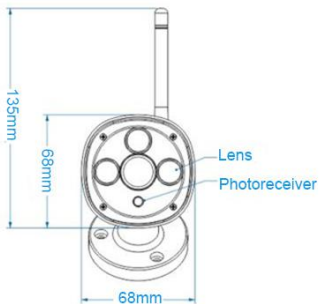
# JoyLite



## Manual for App

## Overview

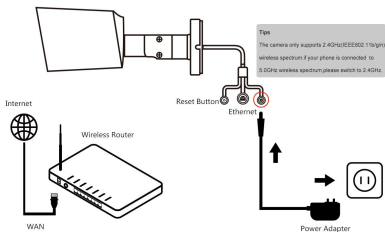
JoyLite is a app that remotely controls the smart camera via a mobile phone. It can be remotely view the camera live screen, video screenshots,, video playback, infrared night vision and other functions. It supports for motion detection, SD card playback,you can also share your wonderful moments to your friends and family.



## Parameter

Model	G101
Lens	75° (D)
Video Compression	H2.64@20fps
Resolution	2.0MP
Video Format	FHD:1920 x1080 HD :1080 x720
Night Vision	20M
Wireless	IEEE802.11b/g/n
Wi-Fi Connect	RJ-45 & WIFI
Electrical Ratings	12V/1A
Temperature Ratings	-5℃~50℃
Storage Humidity	80%RH
Alarm	Support phone push
Extensible Space	Micro SD card ,up to 32G

## Installation



Before using app to add your camera ,please connect your camera's hardware .

- 1、Connect the power adaptor to your camera and plug it into the power outlet.
- 2、Connect your camera to your router's Ethernet LAN port using an Ethernet cable or using Wi - Fi .
- 3、Please let the phone and the camera connected to the same wifi during the bind process. ( 5Ghz currently not supported)

## Download

Scan QR Code and download JoyLite .



Or:

IOS : Search 'JoyLite' in app store and download it.

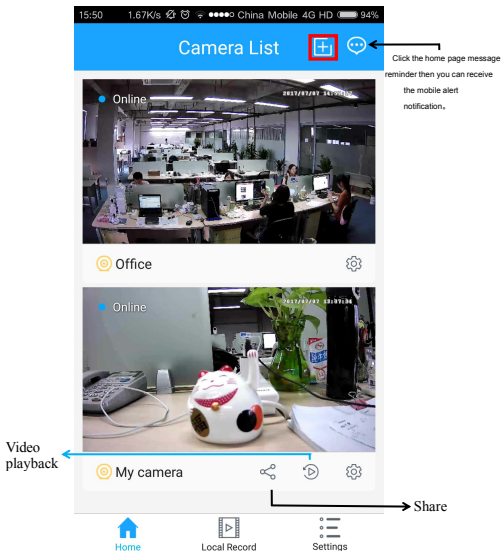
Android: Search 'JoyLite' in Google Play and download it.

## Indicator introduction

- (1) The green light always on means the power connection;
- (2) The green light blinking means that it's in configuration state;
- (3) The blue light always on means that it's in normal operating state.
- (4) The blue light blinking means that someone is viewing live.

## Bind

Open JoyLite, click the "+" button in the top right corner of the home page, and add the camera according to the page and voice prompts.





## Tips

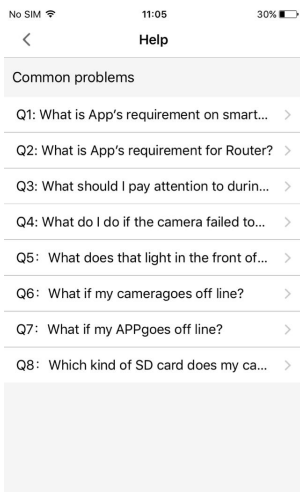
- 1、 Please insert FAT32 format SD card and it supports up to 32GB. (Format your SD card and insert it into SD card slot. )
- 2、 If the scan-box shows black when scanning QR code at the bottom of the camera , please go to the phone settings and open ‘access to camera’ permission.
- 3 、 After sending sound waves, if you hear 'tok tok'prompt tone means connection to Wi-Fi is successful, the Green light blinking turn to a blue light, then click next. You can also add a camera by QR code

## Functions

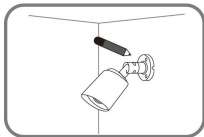
- 1、 The phone can be bundled with multiple cameras for remote control.
- 2、 Open Camera APP ,you can Screenshots, switching clarity, full-screen viewing .Click the camera settings, you can set the infrared night vision, leave-home alert mode, on /off, unbind the camera and other operations.
- 3、 SD card video playback is presented in timeline, if there is no file playback, please check whether to insert the specified SD card.
- 4、 You can store videos and screenshots in local records.
- 5、 App and firmware versions will continue to update, to provide customers with quality experience.

## Help

Click Settings—Help, and check the FQA。

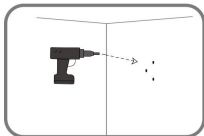


## Camera installation



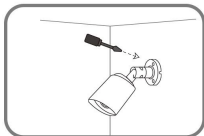
### Step 1

Place the holder where you want to position the camera and use a pencil to mark the holes.



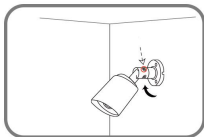
### Step 2

Depending on the material of the wall or ceiling, use proper tools to drill three holes 25mm deep with a 6mm drill bit where you marked. If the wall is made out of concrete, drill the holes first, then insert the plastic anchors to support the screws.



### Step 3

Please the holder over the holes that are in the wall. Make sure to align the holder holes with the holes in the wall. Use the supplied screws to attach the holder to the surface of the wall.



### Step 4

Adjust the angle of the camera as desired.

## Cautions

- ① Please turn off this product in a place that explicitly prohibits the use of electronic devices, to avoid electromagnetic interference, including but not limited to airplane, hospital.
- ② Do not use the product in the wet, dusty, high temperature, thunderstorm or near fire, magnetic field environment, to avoid causing product failure, fire or explosion.
- ③ Do not put camera and accessories in places where children can touch them to avoid danger.

## Warranty Policy

- ① Within 7 days of purchase, you can refund according to the invoice price or replace the same product if the product quality problems;
- ② Within 15 days of purchase, you can replace the same product if the product quality problems;
- ③ Within 12 months of purchase, we will provide you with warranty service if the product quality problems

## Non-Warranty Policy

- ① Out of warranty expires;
- ② The breakdown caused by the usage , maintain or the customer inappropriate preservation that hasn't follow the requests of the Manual, the damage caused by the dismantle movement of a non-our-company authorized maintainer;
- ③ Damage caused by force majeure;
- ④ The normal decoloring and wear of the product are not covered by the warranty.

## FCC INFORMATION

Note: This equipment has been tested and found to comply with the limits for a Class B digital device, pursuant to part 15 of the FCC Rules. These limits are designed to provide reasonable protection against harmful interference in a residential installation. This equipment generates, uses and can radiate radio frequency energy and, if not installed and used in accordance with the instructions, may cause harmful interference to radio communications. However, there is no guarantee that interference will not occur in a particular installation. If this equipment does cause harmful interference to radio or television reception, which can be determined by turning the equipment off and on, the user is encouraged to try to correct the interference by one or more of the following measures:

- Reorient or relocate the receiving antenna.
- Increase the separation between the equipment and receiver.
- Connect the equipment into an outlet on a circuit different from that to which the receiver is connected.
- Consult the dealer or an experienced radio/TV technician for help.

Caution: Any changes or modifications not expressly approved by the party responsible for compliance could void the user's authority to operate the equipment.

This device complies with part 15 of the FCC Rules. Operation is subject to the following two conditions: (1) This device may not cause harmful interference, and (2) this device must accept any interference received, including interference that may cause undesired operation.

**RF Exposure:** A distance of 20 cm shall be maintained between the antenna and users, and the transmitter may not be co-located with any other transmitter or antenna.