

KONNEK STEIN

Quick Start Guide

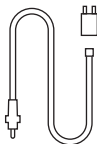
Indoor Security Camera
F23

1

Included in Package



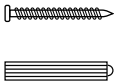
Camera



Power adapter



Quick Start Guide

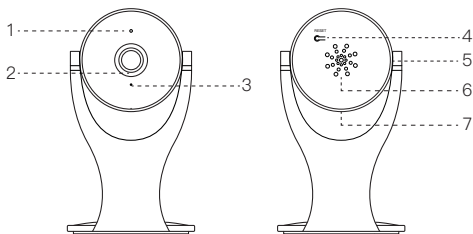


Screw package



Mounting brackets

Camera Information



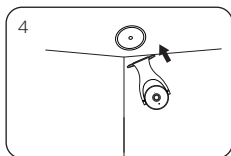
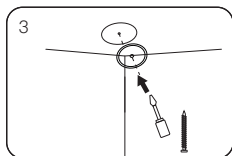
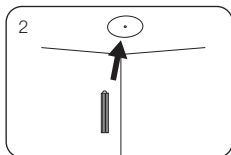
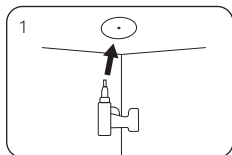
Front

Back

- 1.Microphone
- 2.Lens
- 3.Indicator Light
- 4.Reset Button

- 5.TF Card Slot
- 6.Speaker
- 7.Power Interface

2 Product Installation



1. Use an appropriate drilling tool to drill a hole at the installation location.

2. Insert wall anchors before installing the screws.

3. Install the mounting bracket, use the install screws to screw the mounting bracket directly into your wall.

4. Then align the camera with the card slot and install it on the wall.

Noted: Flexible installation supports ceiling install and lay flat.

3

Related Download

1. Scan QR Code to download the App linklemo.
2. Search “linklemo” in App Store or Google Play and download.

**Tips:**

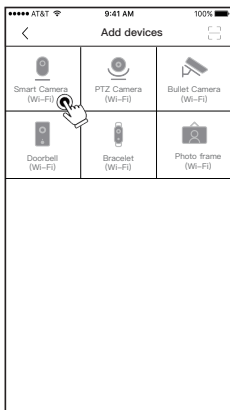
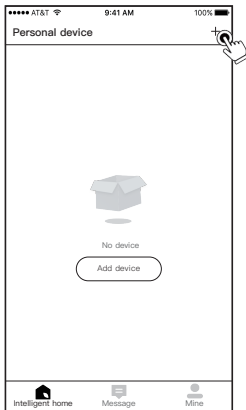
Please kindly note this device is only compatible with 2.4GHz WiFi. **Connection to 5GHz WiFi will show connection failure.** Most of the 5GHz routers have 5GHz and 2.4GHz modes. Please select 2.4GHz during the item installation.

5 APP Explanation

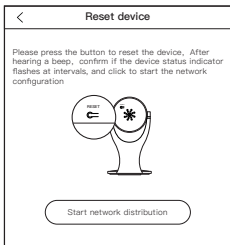
Binding Description

1.Add Camera

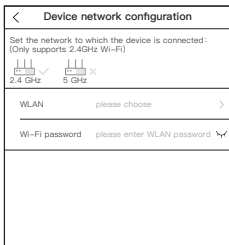
- ①.Click Add Product“ + ”button on the app homescreen.
- ②.Choose card machine.



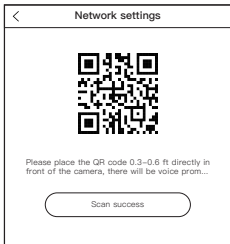
QR code binding



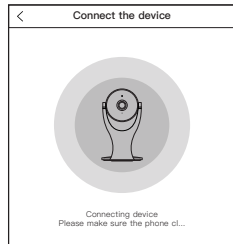
③.Reset the device.



④.Connect Wi-Fi.

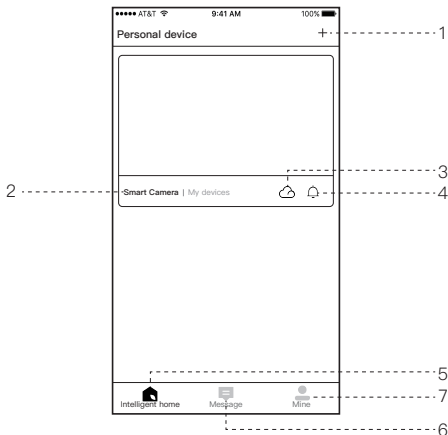


⑤.Scan QR code.



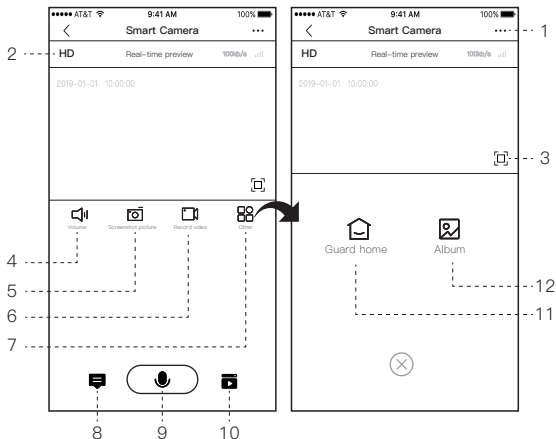
⑥.Connect Network then name.

Main Interface



- 1.Add device
- 2.Device name
- 3.Cloud video storage
- 4.Message notification
- 5.Intelligent home
- 6.Message
- 7.Mine

Live Interface



1.Settings

2.Resolution

3.Full screen

4.Volume

5.Screenshot picture

6.Record video

7.Other

8.Message

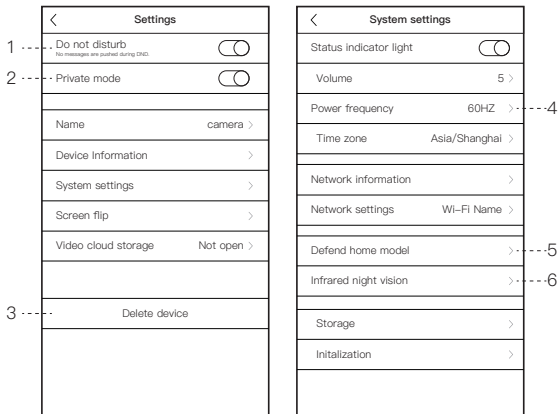
9.Speaker

10.Playback

11.Guard home

12.Album

Settings Interface



- 1.Do not disturb: Do not push messages during Do Not Disturb.
- 2.Private mode: Turn off the camera.
- 3.Delete the device: If you want to reconnect the device, please delete the device.
- 4.Power frequency: Set the power frequency according to different regions.
- 5.Defend home model: In the setting area and time period, when a screen change is detected, a prompt message will be pushed.
- 6.Infrared night vision: Switch night vision mode.


4 Other Information

FCC ID: 2ANJX-F23

This device complies with Part 15 of the FCC Rules.

Operation is subject to the following two conditions:

- (1) This device may not cause harmful interference
 - (2) This device must accept any interference received, including interference that may cause undesired operation.
- More information please go to www.fcc.gov/oet/ea/fccid to search.

 **WARNING:** This product can expose you to chemicals including Pb, which are known to the State of California to cause cancer and birth defects or other reproductive harm. For more information go to www.P65Warnings.ca.gov.

Customer Service Tel: 800-757-0280
Customer Service Email: customerservice@ttnno.com
Any support you need, anything you feel like to share,
You are more than welcome to contact us.

RF Exposure Statement

To maintain compliance with FCC's RF Exposure guidelines, This equipment should be installed and operated with minimum distance of 20Cm the radiator your body. This device and its antenna(s) must not be co-located or operation in conjunction with any other antenna or transmitter

FCC Warning Statement

Changes or modifications not expressly approved by the party responsible for compliance could void the user's authority to operate the equipment. This equipment has been tested and found to comply with the limits for a Class B digital device, pursuant to Part 15 of the FCC Rules. These limits are designed to provide reasonable protection against harmful interference in a residential installation. This equipment generates uses and can radiate radio frequency energy and, if not installed and used in accordance with the instructions, may cause harmful interference to radio communications. However, there is no guarantee that interference will not occur in a particular installation. If this equipment does cause harmful interference to radio or television reception, which can be determined by turning the equipment off and on, the user is encouraged to try to correct the interference by one or more of the following measures:

- - Reorient or relocate the receiving antenna.
- - Increase the separation between the equipment and receiver.
- - Connect the equipment into an outlet on a circuit different from that to which the receiver is connected.
- - Consult the dealer or an experienced radio/TV technician for help.