

MINI R/C FIRE TRUCK



(Operating instruction)

(Please read the instructions carefully before using.)

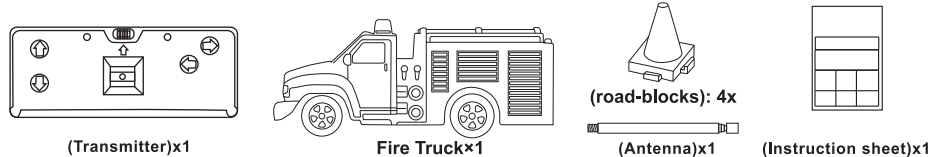
(Please take care of the instructions for necessary at a later date.)

PRODUCT FEATURES:

The car turn on electricity longer time:6-10minutes(equipped with large-capacity battery,it can reach the best effect after charged and discharged several times.); Longer distance:6- 20meters;

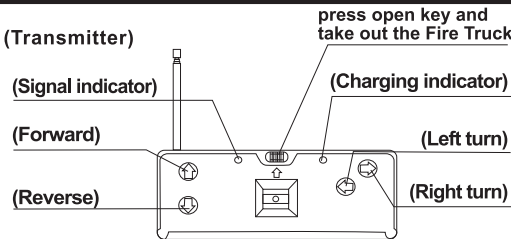
Better performance:reliable frequency selection and strong anti-interference ability.

(CONTENTS)

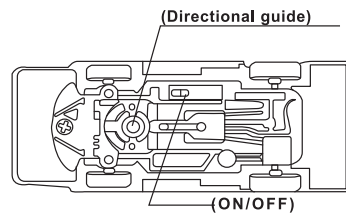


(PART DETAILS)

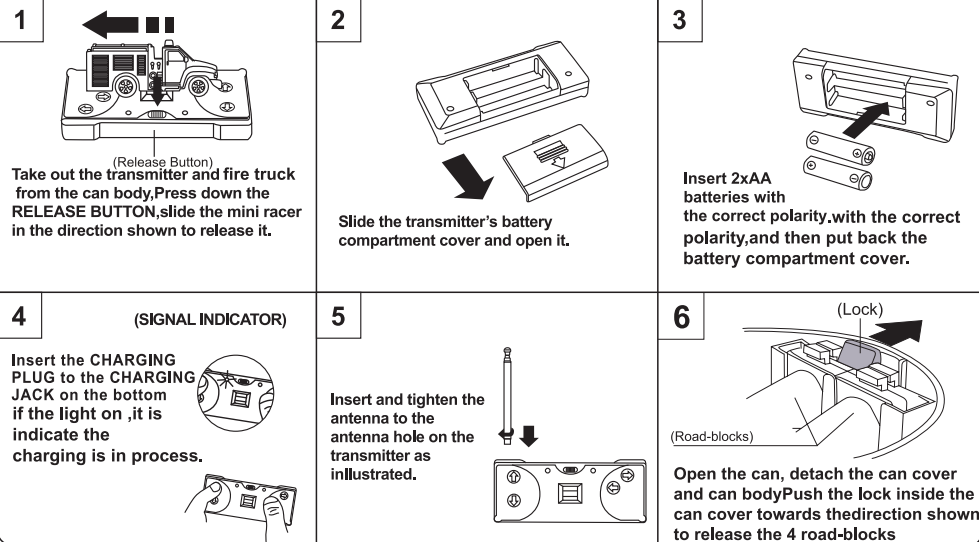
● (Transmitter)



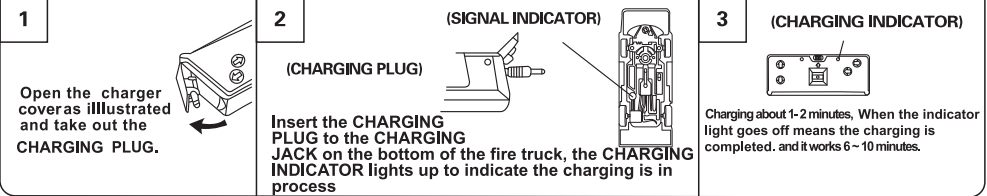
● (Fire Truck)



(PREPARATION)

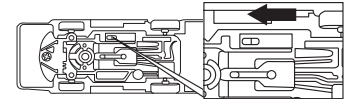


(CHARGING THE RACING CAR)



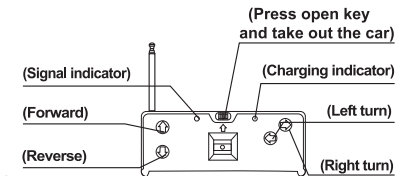
(OPERATION)

Extend the transmitter's antenna for better signal reception. Move the ON/OFF switch on the mini racer to ON, and place it on the ground.

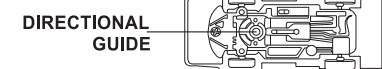


(The transmitter is full-function.):

- (1) The SIGNAL INDICATOR lights up when any button on the transmitter is pressed.
- (2) The fire truck run forward and lights up its headlights when the transmitter's FORWARD button is pressed. The fire truck run reverse and lights up its tail lamps when the transmitter's REVERSE button is pressed.
- (3) Pressing the LEFT/RIGHT button on the transmitter while the fire truck is running forward or reverse, the mini racer will make left/right turns.
- (4) The RELEASE BUTTON on the transmitter is used to release the fire truck which is locked on the transmitter when packaging.



The DIRECTIONAL GUIDE is used to adjust the fire truck's direct-line-running-performance.



(CAUTIONS)

- Different types of batteries or new and used batteries are not to be mixed.
- Only batteries of the same or equivalent type as recommend are to be used.
- Exhausted batteries should be removed from the product.
- Do not dispose of batteries in fire, or batteries will explode or leak.
- The supply terminals are not to be short-circuited.
- Batteries are to be inserted with the correct polarity.
- Non-rechargeable batteries are not to be recharged.
- Rechargeable batteries are only to be charged under adult supervision.
- Rechargeable batteries are to be removed from the product before being charged (if removable).
- Remove batteries if the product is not to be used for an extended period.
- The packaging has to be kept since it contains important information.

Warning: Changes or modifications to this unit not expressly approved by the party responsible for compliance could void the user ' s authority to operate the equipment.

NOTE: This equipment has been tested and found to comply with the limits for a Class B digital device, pursuant to Part 15 of the FCC Rules. These limits are designed to provide reasonable protection against harmful interference in a residential installation. This equipment generates, uses and can radiate radio frequency energy and, if not installed and used in accordance with the instructions, may cause harmful interference to radio communications.

However, there is no guarantee that interference will not occur in a particular installation. If this equipment does cause harmful interference to radio or television reception, which can be determined by turning the equipment off and on, the user is encouraged to try to correct the interference by one or more of the following measures:

- Reorient or relocate the receiving antenna.

- Increase the separation between the equipment and receiver.

- Connect the equipment into an outlet on a circuit different from that to which the receiver is connected.

- Consult the dealer or an experienced radio/TV technician for help.