

Quick Start Guide

SABRE IoT Sensor



Specifications

Part Number	Description	Voltage	Current (12vDC)		Operating Temperature	Cable Length
			Avg.	Peak		
8845-000	Mini Mullion	7 - 16 vDC	75mA	100mA	-35C to 65C (-30F to 150F)	152m (500 ft) 22AWG
8845-100	Mullion		75mA	100mA		
8845-200	Wall Mount		90mA	115mA		
8845-300	Keypad		115mA	130mA		

Parts List

IoT Reader

Mullion / Mini Mullion

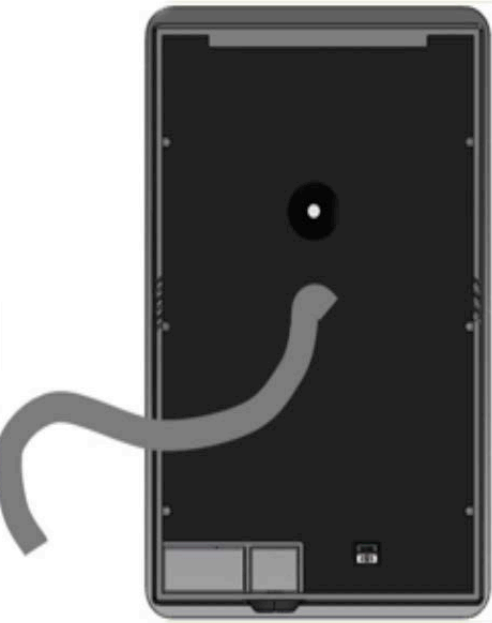
Screws (SMF #6-32x3/8" SS)
- 1 casing to back plate mounting screw
- 2 Junction
Nylon anchor plug -4 Nos



Mullion & Mini Mullion

Wall Mount / Keypad

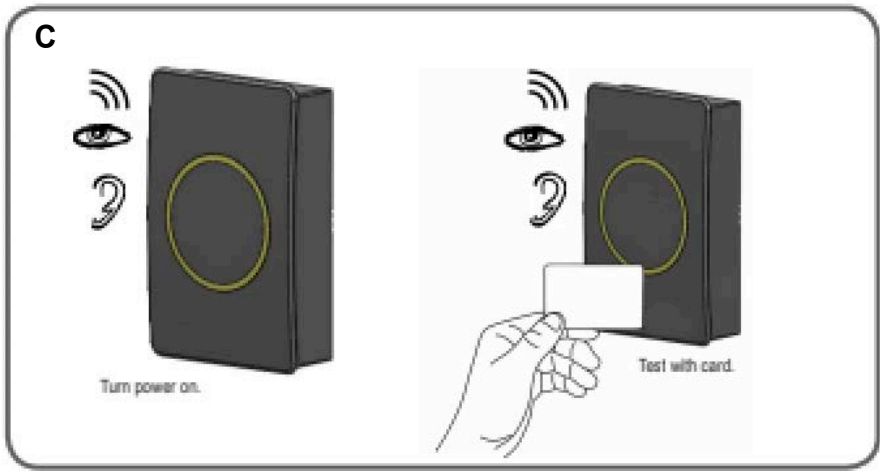
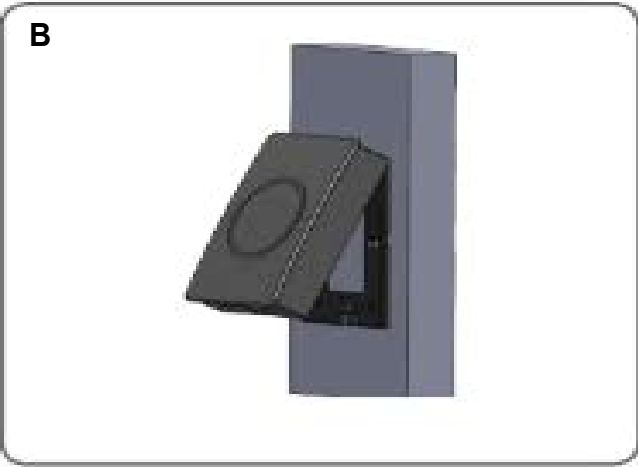
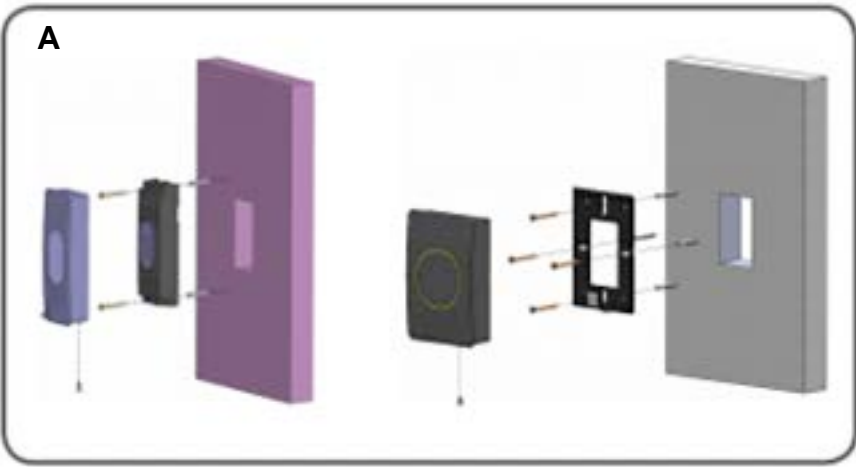
4Nos – Back Plate mounting screws for Wall
Screws (SMF #6-32x3/8" SS)
- 1 casing to back plate mounting screw
- 2 Junction
Nylon anchor plug -4 Nos



Wall Mount & Keypad

Wiring

Pigtail	Description	Pigtail	Description
Black	Ground	Red	+ VDC
White	Wiegand Data (D1)	Aqua	RS-485 A
Green	Wiegand Data (D0)	Pink	RS-485 B
Yellow	Beeper Input	Brown	LED Input (RED)
Grey	Relay In	Orange	LED Input (GREEN)
Blue	Relay Out	Purple	Tamper Out



1

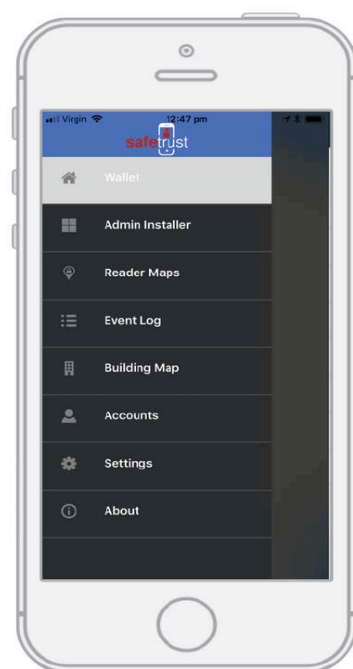
Connect IoT Sensor per the wiring diagram above. Select corresponding wiring for Wiegand or OSDP output. Optional electronic relay output for signaling.

2

Once the IoT Sensor has been wired to the controller lines, its time to mount the reader. (A) Once the reader mounting plate is secured in place or Mullion reader mounted to the wall, its time to place the cover and secure with a screw at the bottom. (B) Finally, power the reader and test with a RFID card to make the reader was wired correctly and powered. (C) If wired correctly, the beeper will sound and LEDs flash.

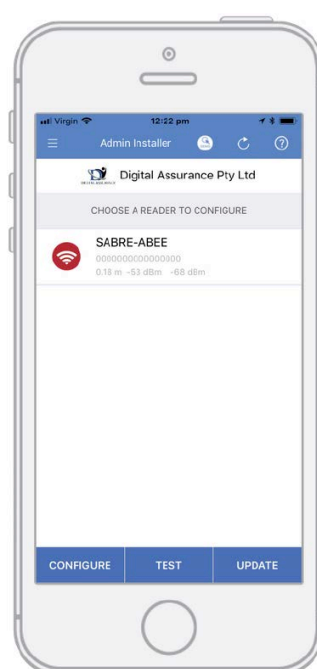
Quick Start Guide

SABRE IoT Sensor



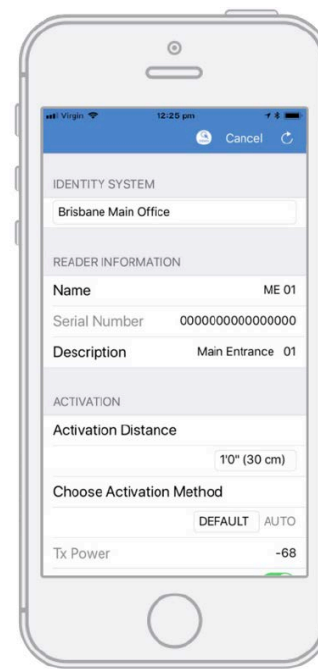
3

Open the Safetrust Wallet APP and select Admin Installer tab. Make sure your system admin has set you up with this role).



4

With the Admin Installer tab open from the App, bring the phone in range of the IoT Sensor and once visible from the App, highlight and select "Configure".



5

Select the corresponding IDENTITY SYSTEM from the drop down box. Assign a short "Name" and "Description" using alphanumeric characters. Enable the slider for "Self Enrollment" if you intend to allow your users to enroll mobile credential using their existing legacy cards from this reader. Click 'Save' to successfully complete reader configuration.

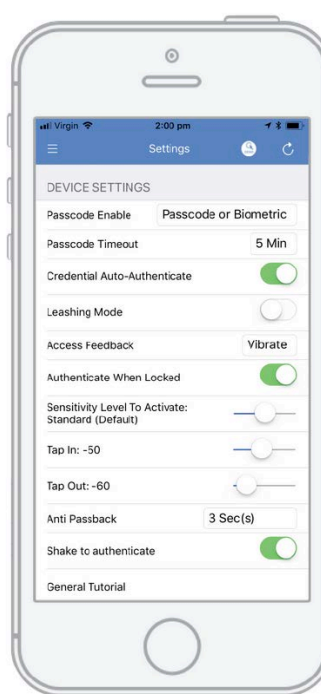
6

When the IoT Sensor information is successfully saved to the Credential Manager, and assigned to the Identity System, the new description will appear in the Admin Installer with a unique serial number assigned.



7

To open the door, simply present your mobile device running the Safetrust Wallet application to the IoT Sensor reader. When the phone is within the configured activation range, the LED within the assigned credential for this identity system will be green in color. If "Auto Authenticate" is enabled for the mobile credential, the credential will be sent to the IoT Sensor reader whenever the mobile device is within the activation zone.



8

The two main configuration options for this are the "Sensitivity Level to Activate" slider, which determines how easily your mobile device will pick up the activation zone, and the "Anti Passback" setting, which defines the number of seconds between each attempt to resend a mobile credential. To adjust these settings, select the 'Settings' tab from the left navigation panel.

FCC

Note: This equipment has been tested and found to comply with the limits for a Class B digital device, pursuant to part 15 of the FCC Rules. These limits are designed to provide reasonable protection against harmful interference in a residential installation. This equipment generates, uses and can radiate radio frequency energy and, if not installed and used in accordance with the instructions, may cause harmful interference to radio communications. However, there is no guarantee that interference will not occur in a particular installation. If this equipment does cause harmful interference to radio or television reception, which can be determined by turning the equipment off and on, the user is encouraged to try to correct the interference by one or more of the following measures:

- Reorient or relocate the receiving antenna.
- Increase the separation between the equipment and receiver.
- Connect the equipment into an outlet on a circuit different from that to which the receiver is connected.
- Consult the dealer or an experienced radio/TV technician for help.

This device complies with Part 15 of the FCC rules. Operation is subject to the following two conditions: (1) This device may not cause harmful interference, and (2) this device must accept any interference receiver, including interference that may cause undesired operation.

Change or modifications that are not expressly approved by the manufacturer could void the user's authority to operate the equipment.

RF Exposure: Mobile RF exposure device, there shall be a minimum separation of 20 cm between the device and any users or installers.

Canada Radio Certification

This device complies with Industry Canada license-exempt RSS standard(s). Operation is subject to the following two conditions: (1) this device may not cause interference, and (2) this device must accept any interference, including interference that may cause undesired operation of the device.

Le présent appareil est conforme aux CNR d'Industrie Canada applicables aux appareils radio exempts de licence. L'exploitation est autorisée aux deux conditions suivantes : (1) l'appareil ne doit pas produire de brouillage, et (2) l'utilisateur de l'appareil doit accepter tout brouillage radioélectrique subi, même si le brouillage est susceptible d'en compromettre le fonctionnement.

www.Safetrust.com
sales@Safetrust.com
+1 510 9 SAFE 09

MODEL SA530
FCC ID: 2ANI55A530
IC ID: 23133-SA530
SN: 1000000 MADE
IN USA

