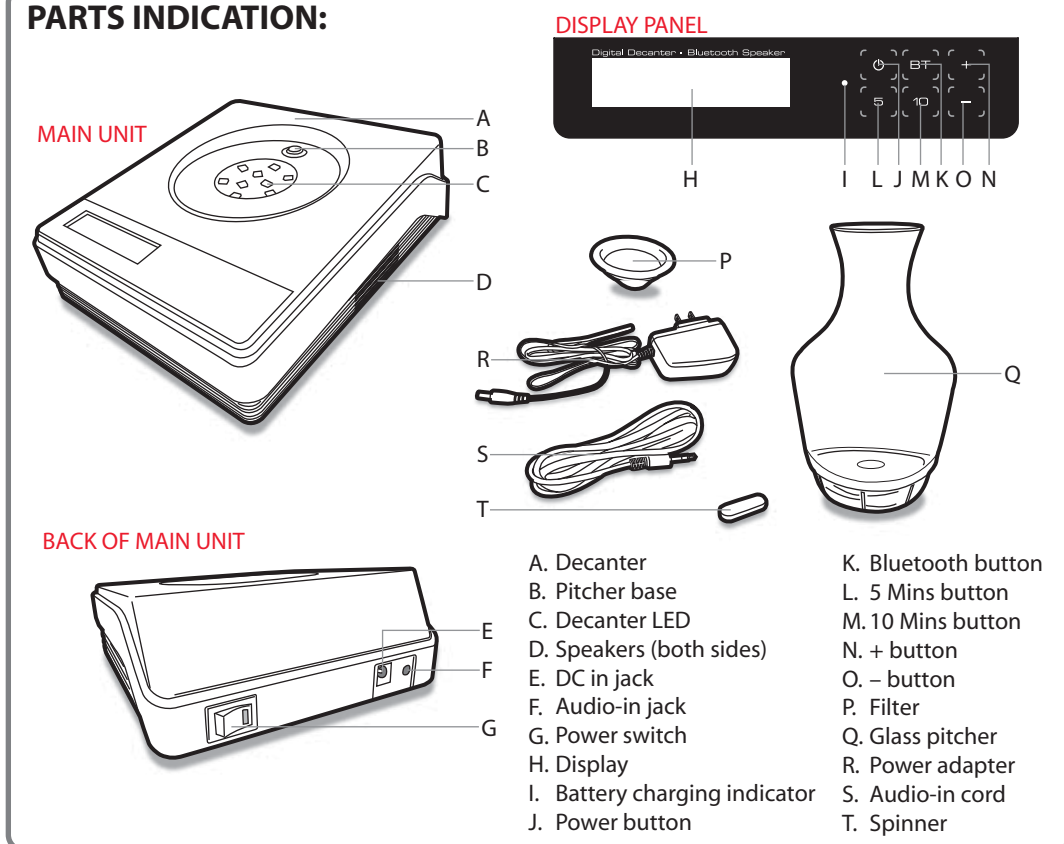
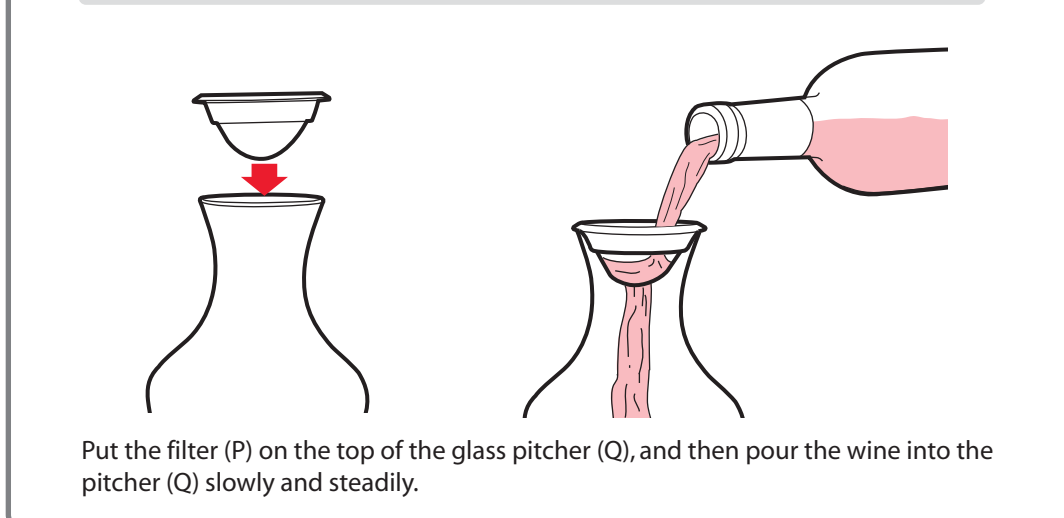


## PARTS INDICATION:



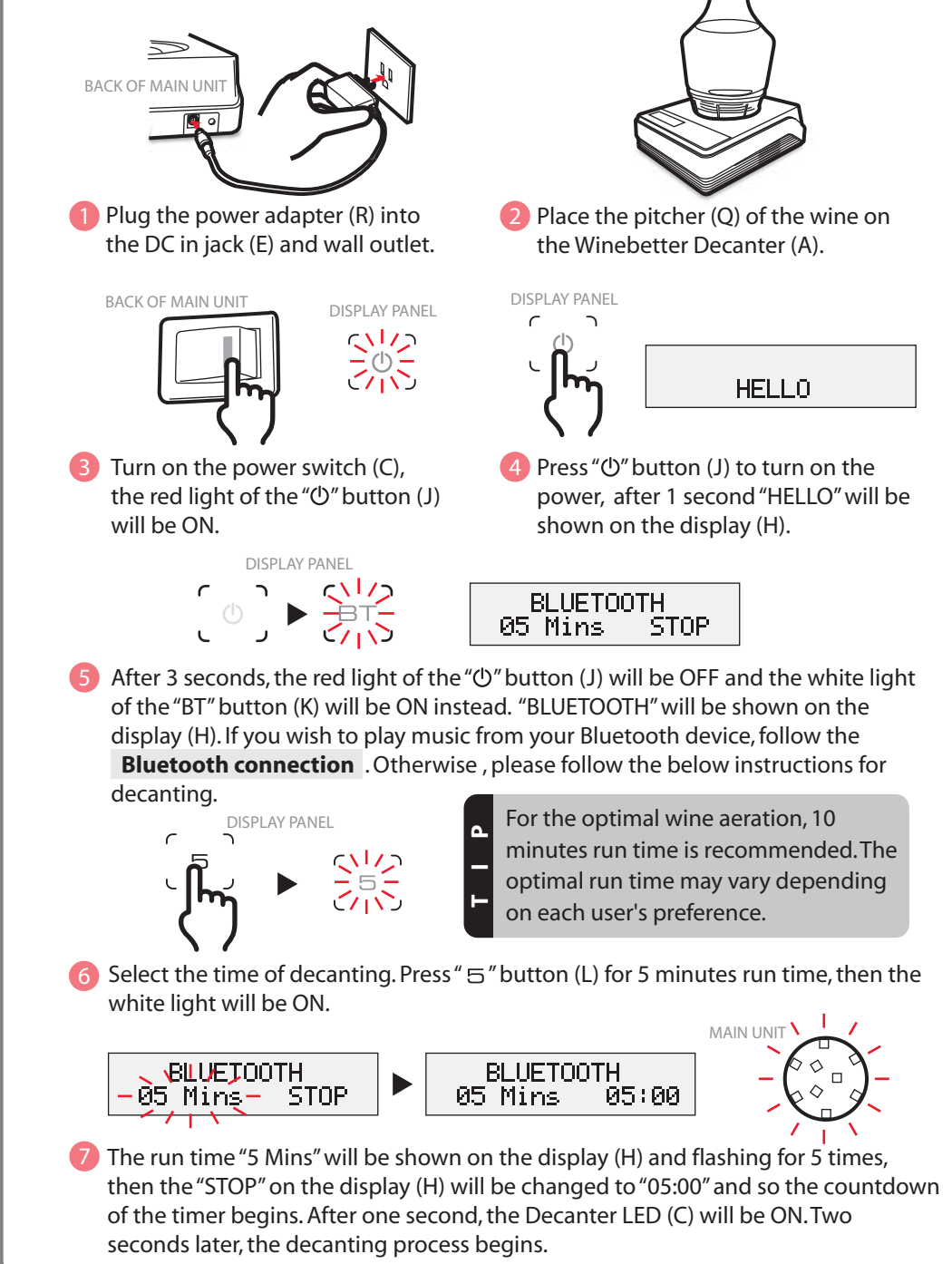
## OPERATION GUIDE

### How to pour the wine into the glass pitcher?



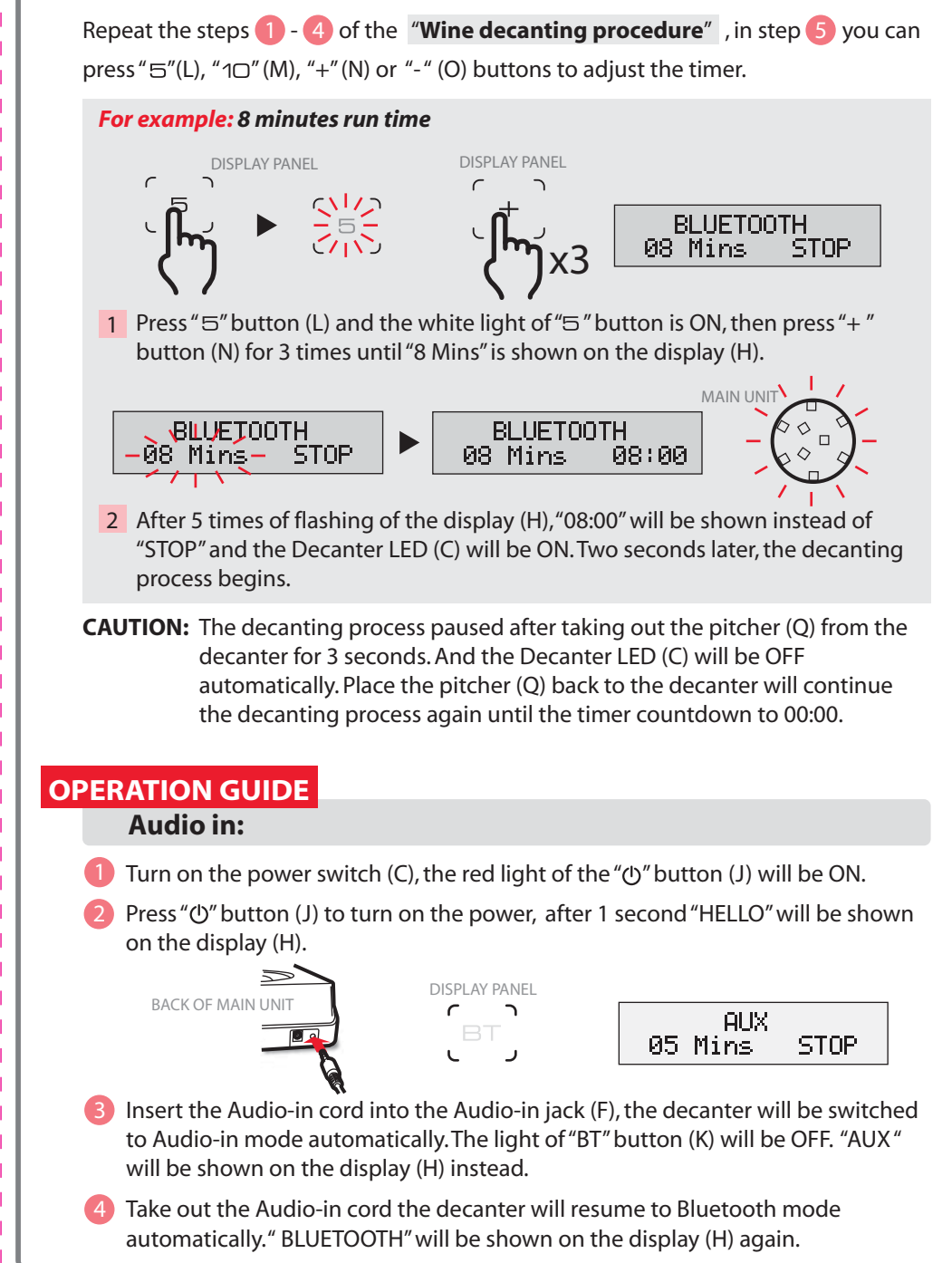
## OPERATION GUIDE

### Wine decanting procedure:



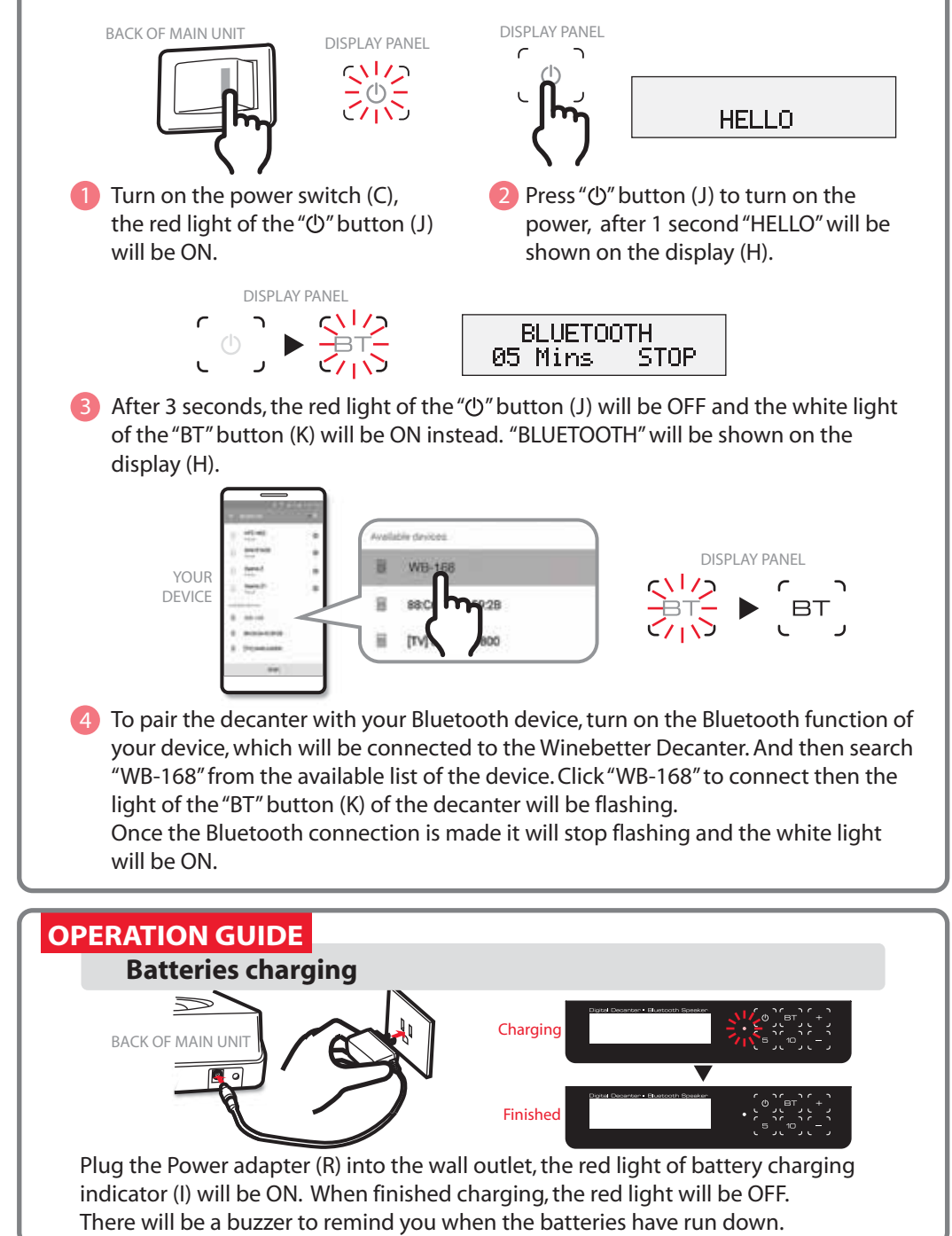
## OPERATION GUIDE

### How to increase or decrease the time of decanting?



## OPERATION GUIDE

### Bluetooth connection:



This device complies with Part 15 of the FCC Rules. Operation is subject to the following two conditions: (1) this device may not cause harmful interference, and (2) this device must accept any interference received, including interference that may cause undesired operation.

**FCC Caution:**

Changes or modifications not expressly approved by the part responsible for compliance could void the user's authority to operate the equipment.

**FCC Statement:**

"This equipment has been tested and found to comply with the limits for a Class B digital device, pursuant to part 15 of the FCC Rules. These limits are designed to provide reasonable protection against harmful interference in a residential installation. This equipment generates, uses and can radiate radio frequency energy and, if not installed and used in accordance with the instructions, may cause harmful interference to radio communications. However, there is no guarantee that interference will not occur in a particular installation. If this equipment does cause harmful interference to radio or television reception, which can be determined by turning the equipment off and on, the user is encouraged to try to correct the interference by one or more of the following measures:

- Reorient or relocate the receiving antenna.
- Increase the separation between the equipment and receiver.
- Connect the equipment into an outlet on a circuit different from that to which the receiver is connected.
- Consult the dealer or an experienced radio/TV technician for help."

This device complies with Industry Canada licence-exempt RSS standard(s). Operation is subject to the following two conditions: (1) this device may not cause interference, and (2) this device must accept any interference, including interference that may cause undesired operation of the device.

Le présent appareil est conforme aux CNR d'Industrie Canada applicables aux appareils radio exempts de licence. L'exploitation est autorisée aux deux conditions suivantes : (1) l'appareil ne doit pas produire de brouillage, et (2) l'utilisateur de l'appareil doit accepter tout brouillage radioélectrique subi, même si le brouillage est susceptible d'en compromettre le fonctionnement.

This equipment complies with Industry Canada radiation exposure limits set forth for an uncontrolled environment.

Cet équipement est conforme à l'exposition aux rayonnements Industry Canada limites établies pour un environnement non contrôlé.

**CLEANING**

- For the glass decanter, when finished, simply rinse with water and let dry .
- Do not clean the product with abrasive cleaners, steel wool, or other abrasive materials.

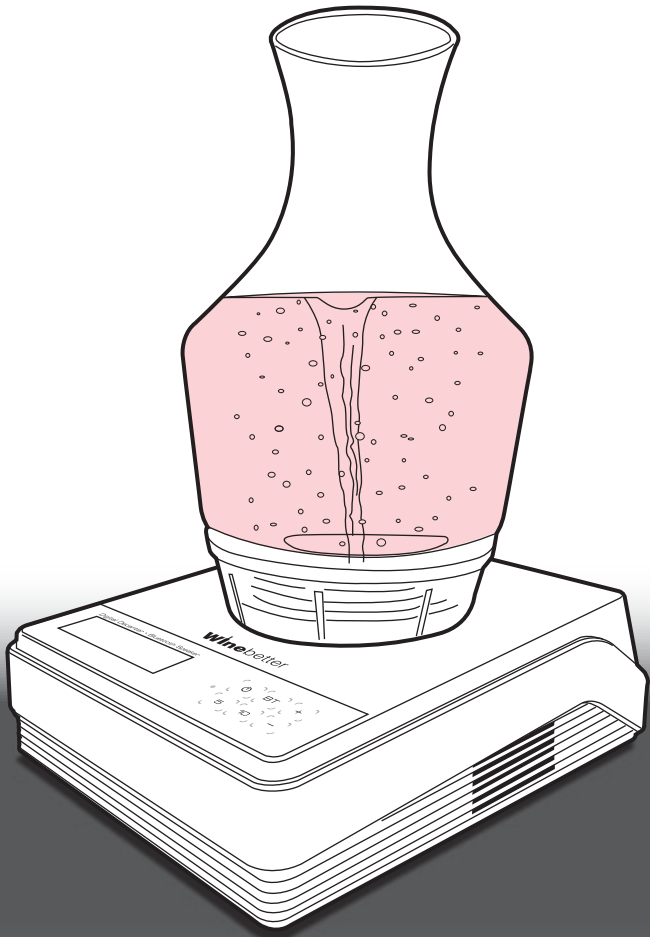
**SPECIFICATION**

Model Number:	WB-168
Power supply:	Input: AC 110-240V ~ 50/60Hz Output: DC 9V, 1.0A
Power consumption:	7.5W
Bluetooth version:	Compliant to Bluetooth 4.2 + EDR, backward-compatible with Bluetooth 1.2, 2.0 and 2.1
Speaker:	2" 4Ω 5w x 2
S/N Ratio:	65dB
Battery type:	Li-Polymer
Battery capacity:	7.4V 1800mAh
Frequency response:	200-15kHz
Dimension:	194 (L) x 155 (W) x 60.2 (H) mm

ENGLISH

**Winebetter™**

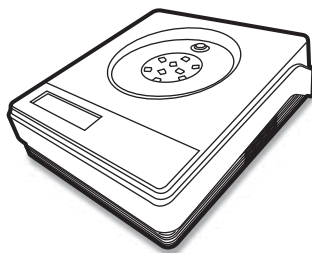
WB-168 Digital Decanter with Bluetooth Speaker



**Quick Start Guide**

[www.winebetter.net](http://www.winebetter.net)

**CONTENTS IN BOX:**



Decanter x1



Glass Pitcher x1



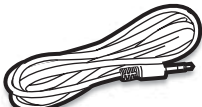
Power adapter x1



Filter x1



Quick Start Guide x1



Audio-in cord x1



Spinner x2

**SAFETY PRECAUTION**



**WARNING**

- Read all the instructions before using the product.
- Keep the instructions at a safe place for future reference.
- Keep the product out of reach of children under 8 years old.
- Place the device on a flat, horizontal, dry and not slippery surface.
- Do not use in moving vehicles or boats. Misuse may cause injury.
- Do not expose to fire, heat, rain or sun.
- Do not overfill the glass decanter above the “Max” level.
- Do not place anything on top of the product.
- The use of other liquids is strictly prohibited.
- The product should be used under a clean, free of dust, non-corrosive, and non-toxic gas environment.
- The glass decanter is not dishwasher safe.
- Do not overage the battery.

