

## 21.5 inch multi-functional digital signage user manual



## contents

1 . Product photo .....	错误！未定义书签。
2 . Product application .....	three
2.1. Multi-functional & all in one application .....	three
2.2. Multi-interface .....	错误！未定义书签。
2.3. Format supported .....	错误！未定义书签。
2.4. Split screen supported,landscape/portrait optional .....	four
2.5. Support SCX cloud system .....	four
2.6. Android、 Windows optional .....	six
3. Specification .....	six
4 . Product size .....	错误！未定义书签。
5、 Optional module .....	nine

## 1. Product photo



## 2. Product application

### 2.1. Multi-functional & all in one application:

Our digital sinage can be deploy in shopping mall, airport, office building ect. to display vedio/text/photo/online TV to your target clients. This device is built in touch screen, Users can know more details about all the information online or saved on the signage by touch screen.

2.2 Multi-interface supported : This signage support audio interface, USB1, USB2, SD card slot, wifi module, Ethernet port

2.3 Format supported:

Vedio:P2.AVI,DIA,XVID,VOB,DAT,MPG,RM,RMVB,MKB,MOV,HDMOV,M4V,PMP,AVC,FLC

Photo: JPEG,BMP,GIF,PNG

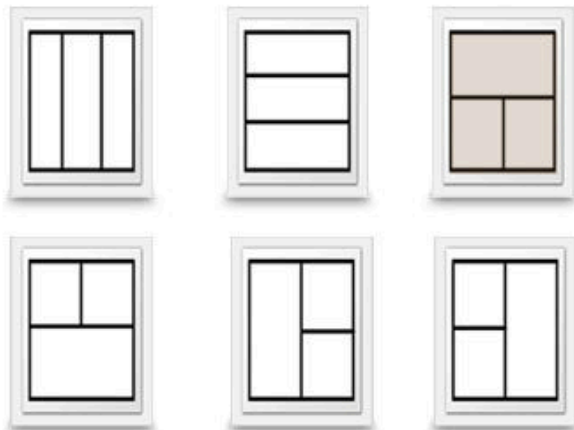
Audio:MP3/WMA/OGG/AAC/AC/DTS/FLAC/APE

2.4 Split screen supported,landscape/portrait optional

### Smart split screen system

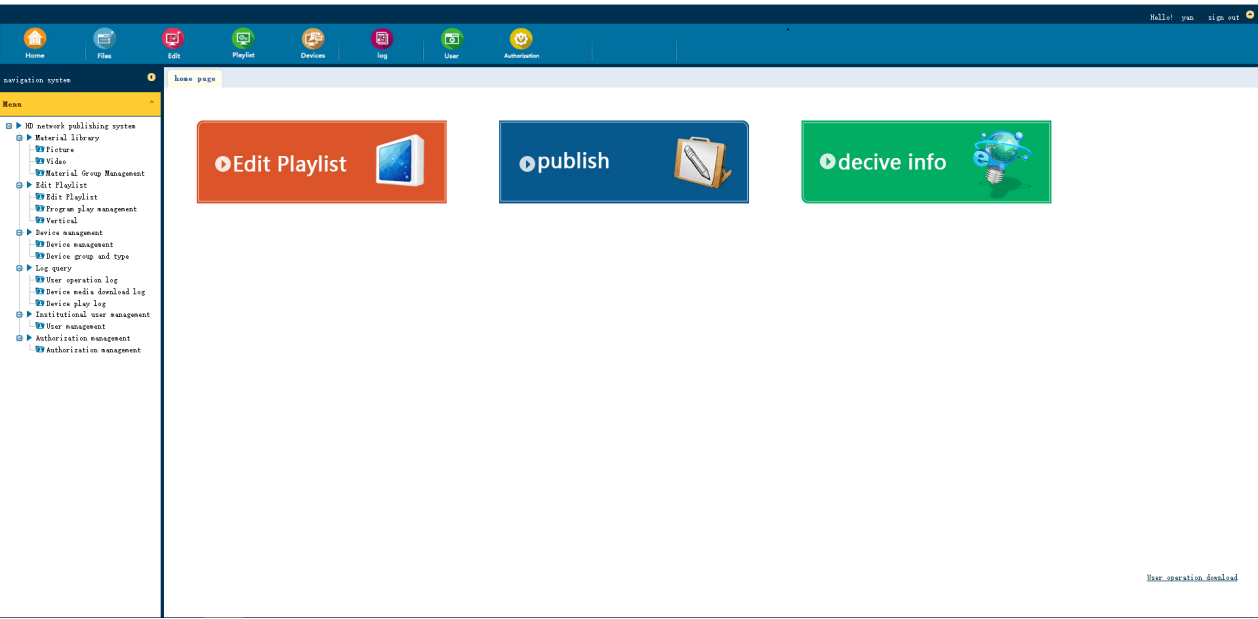
Split the screen as you need by our software

one area two area three area four area five area

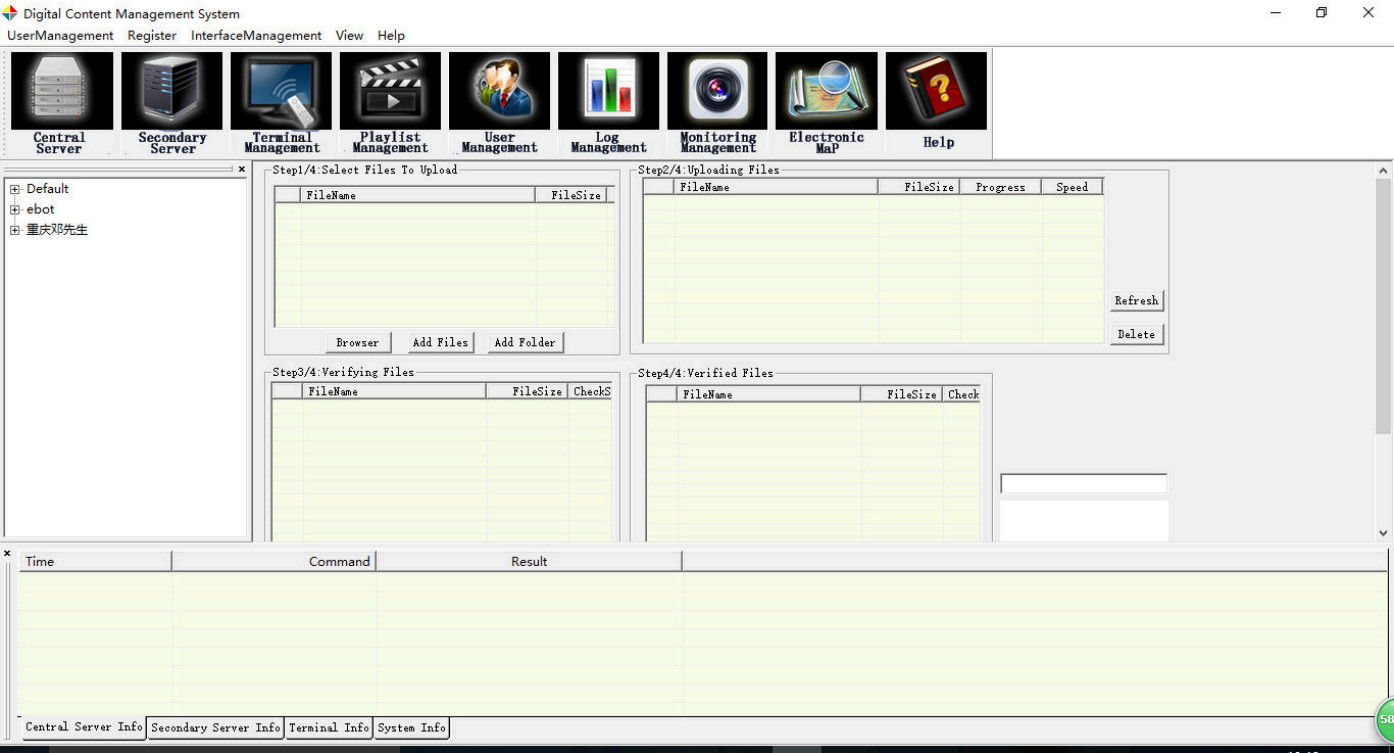


2.5. Support SCX cloud system-- DIY your playlist on the signage

B S management system



C S management system



## 2.6. Android、Windows optional

Android/Windows optional



## 3、specification

21.5 inch multi-functional digital signage		
Model No		SCX3288/X86---21.5
Panel parameters	Panel type	TFT-LED, LCD
	size	21.5 inch
	Display scale	16: 9
	Resolution	1920(RGB)×1080(FHD)
	contrast	1000:1 (Typ.) (TM)
	Response Time	5 ms
	Brightness	250 cd/m2

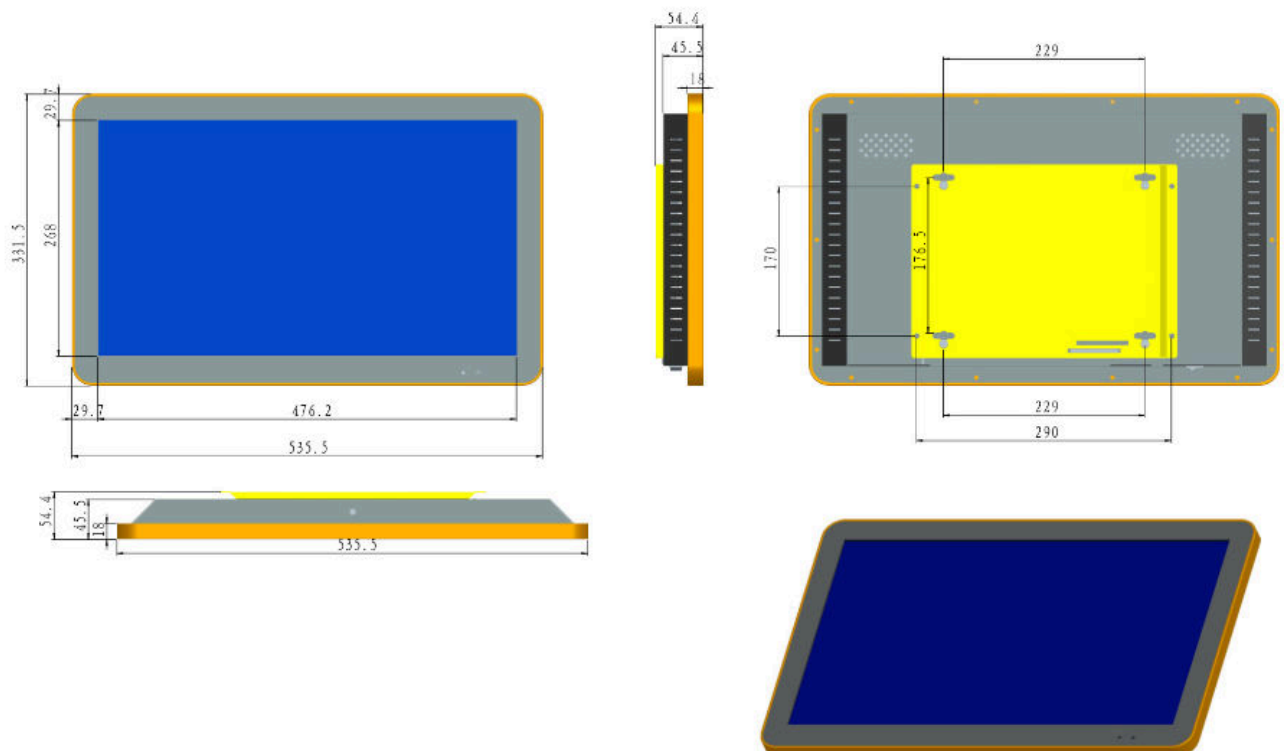
	pixel	0.4845×0.4845mm (W*H)
	Display Area	930 mm×523 mm
	Viewing Angle	85/85/75/85 (Typ.)(CR≥10)
	Life	Over 50,000 hours
	CPU	RK-3188 A9, quad core CPU
	CPU basic frequency	1.8GHz
	RAM	1G
	memory	8G
	Memory extension	UP to 32G SD card
	ethernet card	On board Realtek RTL8111G
	sound card	Inter Display Audio
	audio	Integrated Realtek ALC887 8
	OS	Android 4.2 or above
signal	Vedio format	PAL/NTSC/SECAM
	PC	Line range: 30 ~ 80KHZ, field synchronization range: 50 ~ 75HZ
		Support 1920*1080 Downward compatible signal input

	HDMI	Support 480P、576P、720P、1080I、1080P	
Power	Input voltage	AC110-240V	
	Working power	≤140W	
	Standby power	<3W	
multimedia	Stereo sound	rated power : 10W×2 peak power :15W×2	
Signal input interface			
	HDMI	×1	
	USB 2.0/1.1 interface	×2+2 motherboard port	
	Audio input outpt	×2	
	LPT interface	×1	
	DC power interface	×1	
Working environment	Working Temperature: 0—50 °C		storage temperature : -20— 60 °C
	Working Relative Humidity: 10%~85%		Storage Humidity10%~85%



	power management : meet VESA DPMS standard	
Machine size	dimension	524MM*454MM*22MM
	material	cold rolled steel,aluminium alloy

#### 4. Product size



#### 5. Optional module

5.1 Internet module: 3G/4G optional

5.2 Body sensor

5.3Functional keys;

5.4Other module can be provided as customer's requirements;

#### FCC Warning

This device complies with Part 15 of the FCC Rules. Operation is subject to the following two conditions

- (1) this device may not cause harmful interference, and
- (2) this device must accept any interference received, including interference that may cause undesired operation. Changes or modifications not expressly approved by the party responsible for compliance could void the user's authority to operate the equipment.

Note 1: This equipment has been tested and found to comply with the limits for a Class B digital device, pursuant to part 15 of the FCC Rules. These limits are designed to provide reasonable protection against harmful interference in a residential installation. This equipment generates, uses and can radiate radio frequency energy and, if not installed and used in accordance with the instructions, may cause harmful interference to radio communications. However, there is no guarantee that interference will not occur in a particular installation. If this equipment does cause harmful interference to radio or television reception, which can be determined by turning the equipment off and on, the user is encouraged to try to correct the interference by one or more of the following measures:

- Reorient or relocate the receiving antenna.
- Increase the separation between the equipment and receiver.
- Connect the equipment into an outlet on a circuit different from that to which the receiver is connected.
- Consult the dealer or an experienced radio/TV technician for help.

Note 2: 1.Changes or modifications to this unit not expressly approved by the party responsible for compliance could void the user's authority to operate the equipment.

2. The minimum separation generally be used is at least 20 cm.