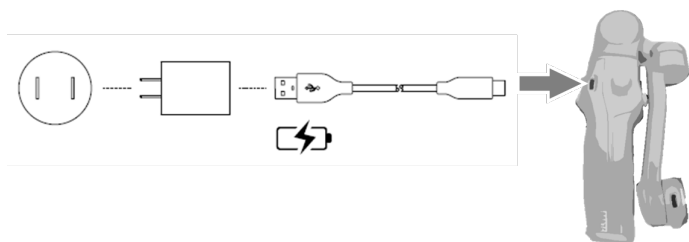


Osmo Mobile 7P

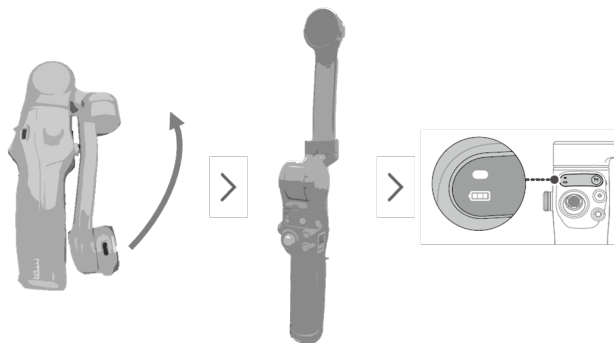
Quick Start Guide

Getting Started

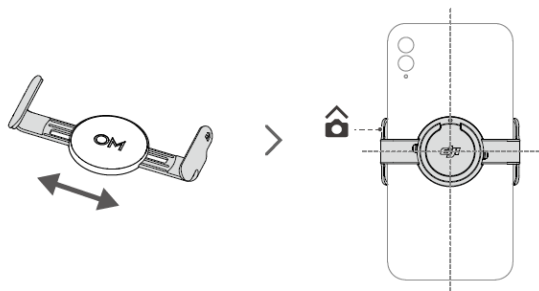
1. Charge Osmo Mobile 7P as shown. Connect a USB adapter (not included) to the charging port using the power cable.



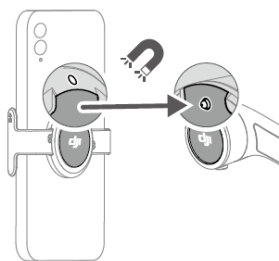
2. Unfold the gimbal as shown. Osmo Mobile 7P will power on automatically once unfolded.



3. Stretch the magnetic phone clamp to adapt to the mobile phone width. Attach the magnetic phone clamp in the center of the phone.

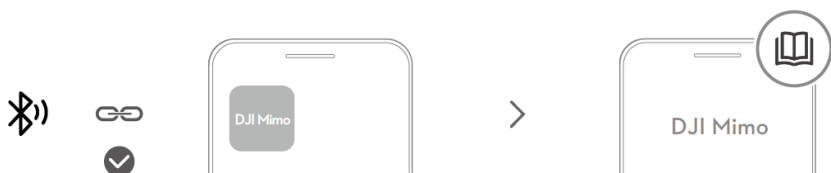


4. Align the marks on the phone clamp and the phone clamp mounting plate. Attach the mobile phone to Osmo Mobile 7P.



Connecting to the DJI Mimo App

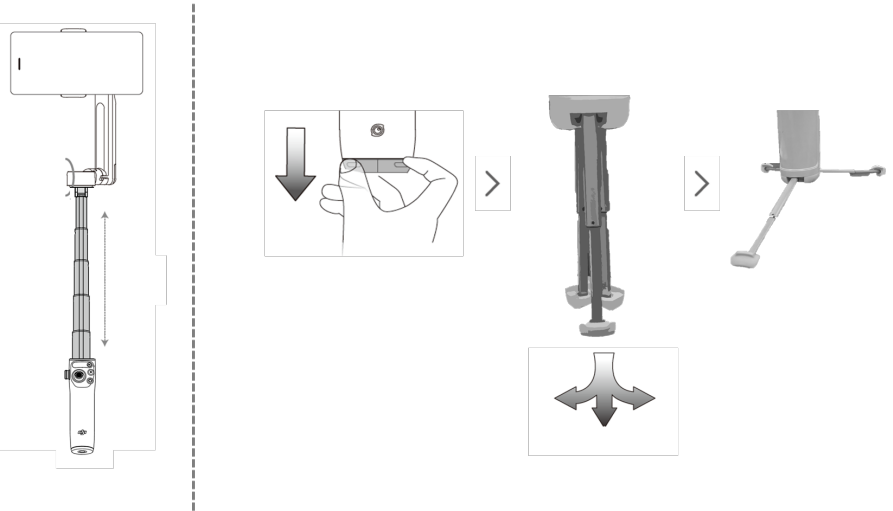
1. Power on Osmo Mobile 7P.
2. Enable Bluetooth on the mobile phone and connect to Osmo Mobile 7P in DJI Mimo. Make sure that mobile phone is connected to the internet.
3. Users are required to allow access to certain information when using DJI Mimo for the first time. The exact information will be listed in the prompt. An internet connection is required. Osmo Mobile 7P will be activated after authorization and the app will enter the camera view.



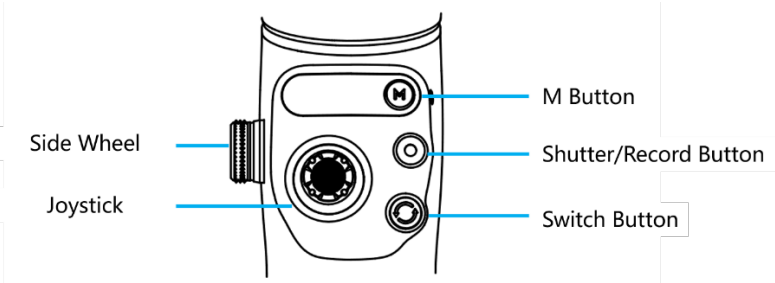
Built-in Extension Rod and Tripod

The gimbal features a built-in extension rod that can be extended for selfies, which allows more objects to be captured in the frame.

The gimbal also features a built-in tripod that can be used to temporarily place Osmo Mobile 7P on a windless, stable, and flat surface.



Buttons



M Button

When powered off:

Operation	Description
Press once	Check the battery level

Press and hold	Power on
----------------	----------

When powered on:

Operation	Description
Press once	Switch between gimbal modes
Press three times	Enter standby mode

Joystick

Operation	Description
Move vertically	Tilt the mobile phone
Move horizontally	Pan the mobile phone

Trigger

Operation	Description
Press once	Start or stop ActiveTrack 5.0 (requires use with DJI Mimo)
Press twice	Recenter the gimbal
Press once, and then press and hold	Enter fast mode (release the trigger to exit)
Press and hold	Enter lock mode (release the trigger to exit)

Shutter/Record Button

Operation	Description
Press once	Take a photo or start or stop recording
Press and hold	Use burst shooting in photo mode

Switch Button

Operation	Description
Press once	Switch between front and rear cameras
Press twice	Switch between landscape and portrait mode
Press three times:	Switch between photo and record mode

Side Wheel

Operation	Description
Press once	Switch between focus and zoom
Rotate	Control focus or zoom

Storage

Press and hold power button to power off Osmo Mobile 7P. Fold the gimbal and remove the phone.

Specifications

Model	DS507
Bluetooth Protocol	Bluetooth 5.3
Bluetooth Frequency	2.4000-2.4835 GHz
Bluetooth Transmit Power (EIRP)	< 8dBm