

WYNX05

Emitter Specification

FCC STATEMENT

1. This device complies with Part 15 of the FCC Rules. Operation is subject to the following two conditions:

(1) This device may not cause harmful interference.

(2) This device must accept any interference received, including interference that may cause undesired operation.

2. Changes or modifications not expressly approved by the party responsible for compliance could void the user's authority to operate the equipment.

NOTE: This equipment has been tested and found to comply with the limits for a Class B digital device, pursuant to Part 15 of the FCC Rules. These limits are designed to provide reasonable protection against harmful interference in a residential installation.

This equipment generates uses and can radiate radio frequency energy and, if not installed and used in accordance with the instructions, may cause harmful interference to radio communications.

However, there is no guarantee that interference will not occur in a particular installation. If this equipment does cause harmful interference to radio or television reception, which can be determined by turning the equipment off and on, the user is encouraged to try to correct the interference by one or more of the following measures:

Reorient or relocate the receiving antenna.

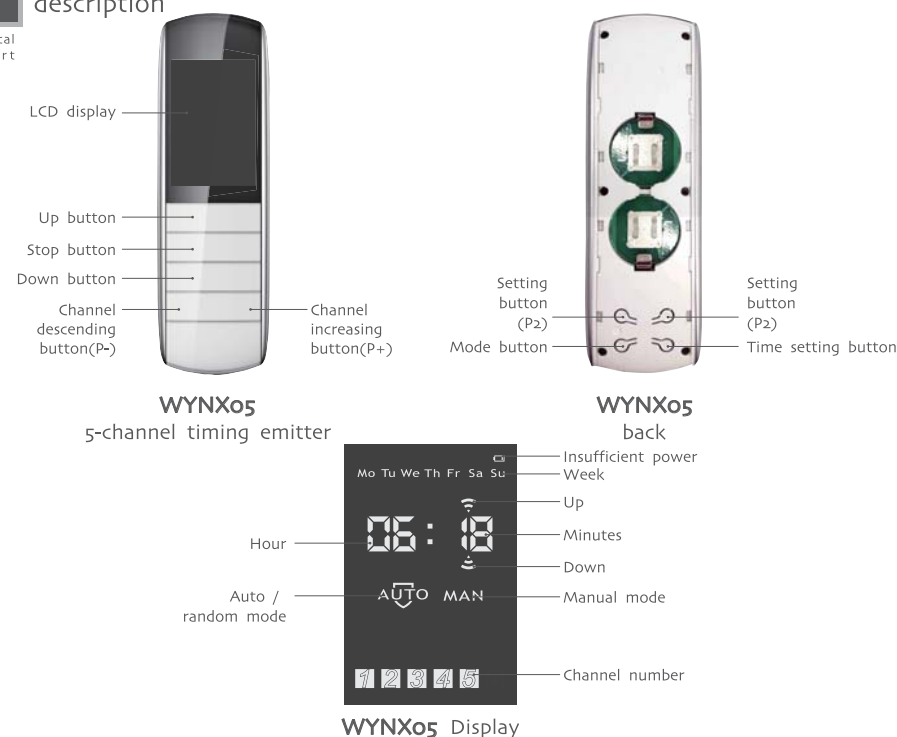
Increase the separation between the equipment and receiver.

Connect the equipment into an outlet on a circuit different from that to which the receiver is connected.

Consult the dealer or an experienced radio/TV technician for help.



Product description

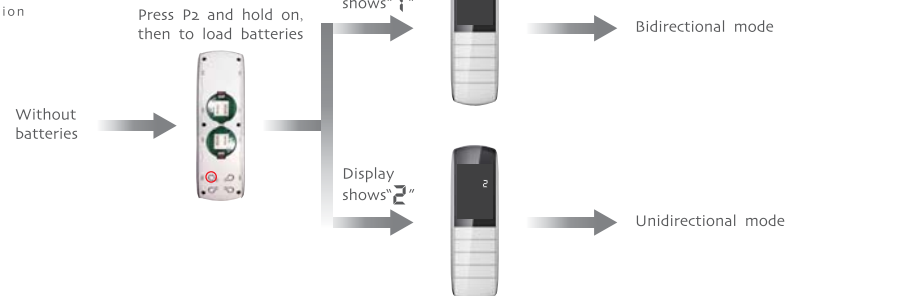


Technical support

Technical parameters	Functional specification
<ul style="list-style-type: none"> Input voltage: DC 3V (CR2450 × 2) Emission frequency: 433.92MHz±100KHz Transmission power: 25mW Operating current: 40mA Operating temperature: -10°C ~ 60°C Transmission distance: outside: 200 meters, inside (between two walls): 35 meters 	<p>DD1595H is a 5-channel timing emitter. One number of LCD screen means one control channel. Press "channel choose" button P1- (number descending) or P1+ (number increasing) to change the channel. On the analogy of this, loose finger when the indicator light move to suitable channel that you select effective channel. When the power is less than 2.6V, there will be "insufficient power" icon to display.</p> <p>Notice: Emitter couldn't be exposed to moisture and struck, so as not to affect life. When you use emitter, if found emission distance obviously short or less sensitive, please change another same new battery. Please have batteries for recycling.</p> <p>Caution: Risk of explosion if battery is replaced by an incorrect type. Dispose of used batteries according to the instructions.</p>

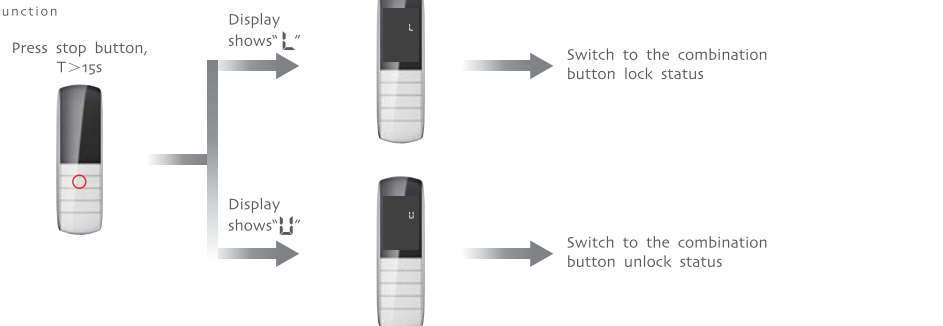
A Unidirectional/Bidirectional mode switching

Additional function



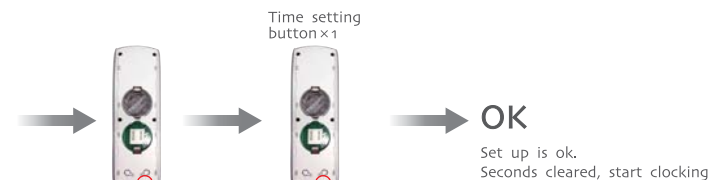
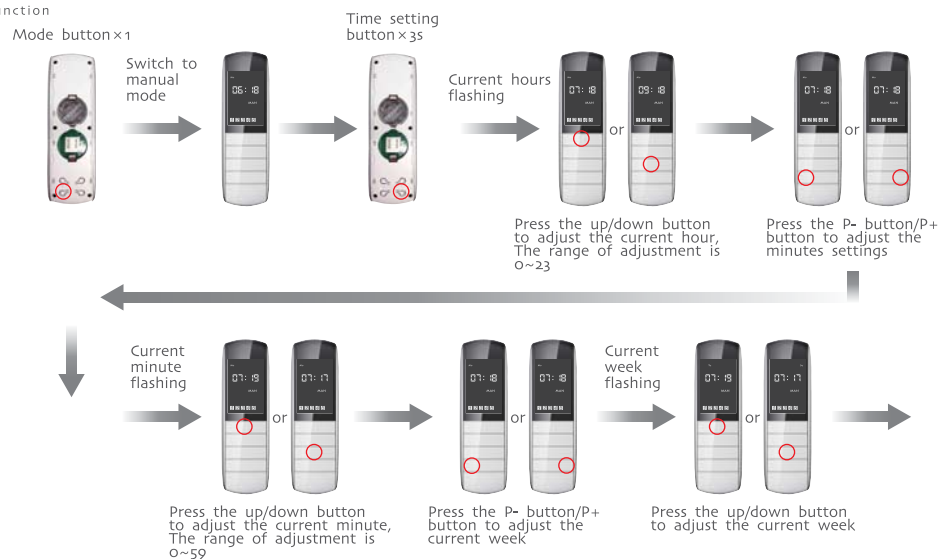
A Combination button lock / unlock status

Additional function



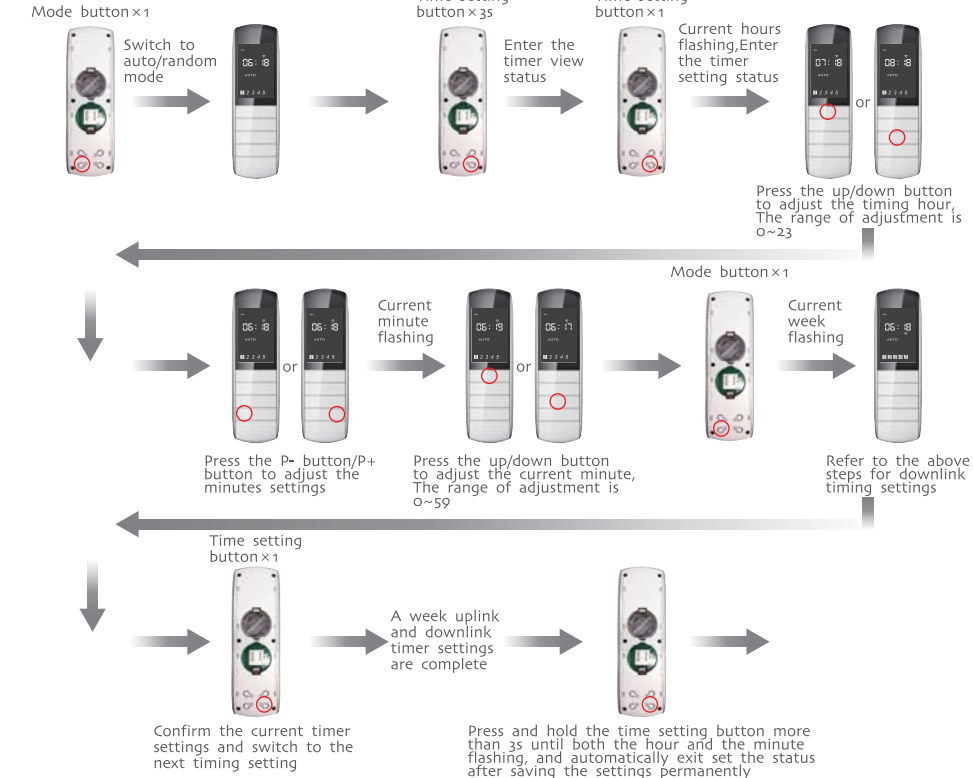
A Current time setting

Additional function



A Timing time setting view and settings

Additional function



A Channel valid / invalid settings

Additional function

