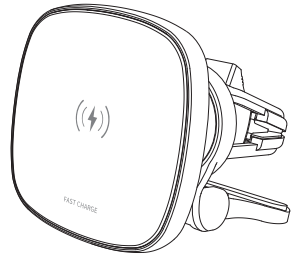


Magnetic Wireless Car Charger

User Manual



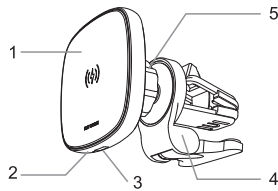
W-26

Please Read This User Manual
Completely And Keep It Properly.

Product Introduction:

Thanks for your choosing our wireless charger, before you use this product, please read this manual carefully and save it.

Product Overview

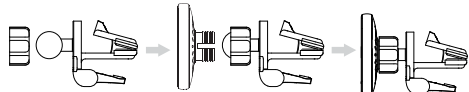


- 1. Wireless charging center area
- 2. LED
- 3. Type-C input
- 4. Air conditioning clip
- 5. Multi-angle rotating ball fixing nut

1

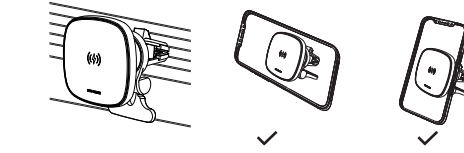
User instruction

1. First put the universal rotating ball head of the telescopic bracket of the empty suction cup on the fixed nut.
2. Press the universal rotating ball head and nut into the main body.
3. Finally tighten the nut as required.



4. Press the clip switch to insert the air outlet clip into the air conditioning port blade.
5. Adjust the appropriated angle and insert the Type-c cable into the wireless charger Type-C interface.
6. Plug USB port into the adapter port, and put your phone on the emission area, make sure the receiving area of the mobile is magnetic suction with the emission area of the wireless charger.

2



Status light tip

1. Standby mode: the red and blue lights are on at the same time after power on, the blue light is off after 2 seconds, and the red light is off after 23 seconds;
2. Charging mode: charging the mobile phone, the blue light keeps breathing and flashing, and the light is off when it is full; when the mobile phone leaves the wireless charging, the red light is on, and the red light is off after 23 seconds, and it enters the standby state;
3. FOD automatic foreign body detection: intelligently identify foreign bodies, such as coins, keys and other metal or magnetic items, and the red and blue lights flash alternately.

Standard accessories

- A manual (Including : Warranty card, Certificate)

3

Product Parameters

Product name	Magnetic Wireless Car Charger
Product model	W-26
Input	5.0V/2A;9.0V/2A;QC2.0/3.0 charger
Output	5W;7.5W;10W;15W (Max)
Accepted distance	<5mm
Product size	63.5X63.5X85mm
Wight	≈81g

Attention

1. Keep out of reach of children.
2. Do not use the wireless charger in high temperature humidity or corrosive environment, avoid damaging the circuit.
3. Do not disassemble the product without permission
4. Do not put the magnetic strip or chip card (ID card, bank card, etc.) near the charger to avoid magnetic fault.
5. It is recommended to use QC certified adapters, or other QC adapters that meet international safety standards (9V/2A, 12V/2A);
6. This charger only supports iPhone 12/13 series with magnetic wireless charging function.
7. This charger only compatible with standard iPhone 12/13 series cases. Other magnet accessories may not be compatible with the charger;

4

FCC Caution:

Any changes or modifications not expressly approved by the party responsible for compliance could void the user's authority to operate this equipment.

This device complies with part 15 of the FCC Rules. Operation is subject to the following two conditions: (1) this device may not cause harmful interference, and (2) this device must accept any interference received, including interference that may cause undesired operation. This device and its antenna(s) must not be co-located or operating in conjunction with any other antenna or transmitter.

NOTE: This equipment has been tested and found to comply with the limits for a Class B digital device, pursuant to Part 15 of the FCC Rules. These limits are designed to provide reasonable protection against harmful interference in a residential installation. This equipment generates, uses and can radiate radio frequency energy and, if not installed and used in accordance with the instructions, may cause harmful interference to radio communications. However, there is no guarantee that interference will not occur in a particular installation.

If this equipment does cause harmful interference to radio or television reception, which can be determined by turning the equipment off and on,

the user is encouraged to try to correct the interference by one or more of the following measures:

- Reorient or relocate the receiving antenna.
 - Increase the separation between the equipment and receiver.
 - Connect the equipment into an outlet on a circuit different from that to which the receiver is connected.
 - Consult the dealer or an experienced radio/TV technician for help.
- To maintain compliance with FCC's RFE exposure guidelines, This equipment should be installed and operated with minimum distance between 20cm the radiator your body: Use only the supplied antenna.

FCCID: 2ANCT-W26

Manufacturer : Shenzhen Luoxi Technology Co., Ltd
Address : 4F&6F, Building B1, Anle Industrial Zone, No.172, Hangcheng Avenue, Hangcheng Street, Baoan District, Shenzhen, China
TEL : +086-0755-85278001



Made in China

Certificate of approval

Inspector: _____
Date of production: _____



Warranty card

Customer date

Username: _____

Tel No.: _____

Address: _____

E-mail: _____

Date of purchase : _____