



Address : No.16-3, Shunping 1<sup>st</sup> St., Xitun Dist., Taichung City 40754, Taiwan (R.O.C)

Tel : 886-4-2295-0350

Fax : 886-4-2295-0357

# MANUAL

## 使用手冊

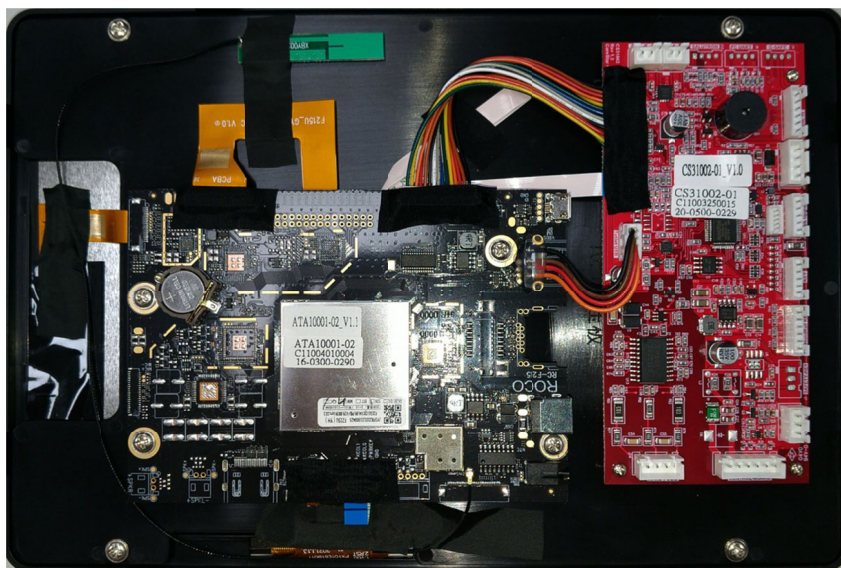
<b>CUSTOMER</b>	
<b>Item P/N</b>	ATA10001
<b>DESCRIPTION</b>	TFT Electronic Meter
<b>Document Number</b>	ATA10001
<b>DATE</b>	

This document contains confidential and proprietary information of CORESTAR CO., Ltd and shall not be duplicated or otherwise transferred to a third party without the express written consent of CORESTAR.

本文件所包含內容所屬於合興數位股份有限公司(CoreStar Co., Ltd)之規格文件及專有技術資料所有，不得未經由合興數位公司同意而擅自轉載或以不明確的書面或其他方式轉讓給第三方。

## 1. Hardware overview

### 1.1 Main Board PCB Physical Specifications



### 1.2 Connector Definitions

U1304

IPEX Wi-Fi / BT Antenna connector

J3001/J1 CTRL CON

Pin No.	Description	Pin No.	Description	Pin No.	Description	Pin No.	Description
1~4	+12V	5~7、10、 13	GND	8	+5V	9	+3.3V
Pin No.	Description	Pin No.	Description	Pin No.	Description	Pin No.	Description
11	UART Rx	12	UART Tx	14	RS232 Tx	15	RS232 Rx

J2301/J17

System Key and Headphone connector

CON2501

12V DC Power input

AJ1/BJ1

Speaker connector

J15

External Line-in socket connector

J2

FAN control connector

J6

External USB socket connector

J10

Keyboard connector

J11

Hand Rail key connector

J5

5Khz Heart rate receiver module connector

J14

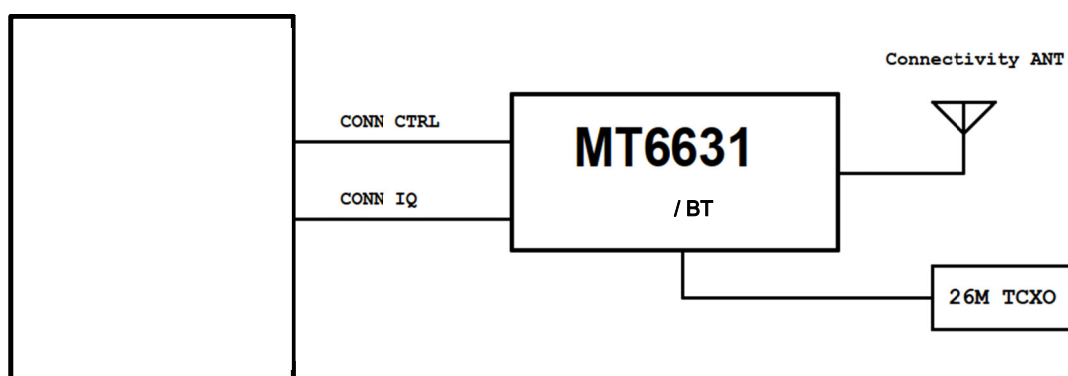
Wired heart rate sensor connector

J7

USB bridge connector

## 2. Operational description

### 2.1 System block diagram



2.2 Operating frequency: 2142-2462MHz / 2402-2480MHz / 5180-5240MHz, support IEEE 802.11b/g/n/a/ac (Frequency Bandwidth: 20MHz / 40MHz), BT/LE

2.3 PIFA / 0.51 dBi (for WLAN 2.4GHz), 0.69 dBi (for BT & BLE) 1.24 dBi (for WLAN 5GHz)

2.4 Modulation

2.4.1 BT/BLE : GFSK / DSSS

2.4.2 Wi-Fi : DBPSK/DQPSK/CCK(DSSS)

2.5 The 12V DC power will power the console and whole system including the RF system.

2.6 User may select a program and get started a workout with Guest or an existing user account that created on the console.

2.7 There are some media apps and wireless phone screen mirror function that it means console needs to be connected to a Wi-Fi AP first.

2.8 User can search Wi-Fi AP manually via system setting menu and connect to one of them.

2.9 And a Bluetooth speaker or headset is supported on the console as well. User can search A2DP devices manually via system setting menu and connect to one of them.

2.10 The console is also supported Bluetooth low energy heart rate straps which comply with the SIG HR profile. User may pick up a BLE strap through UI on the console.

2.11 The data of process and summary of the workout will be sent to a dedicated cloud if the Wi-Fi connection is available else it will store on the console and resend once the connection resumed.

### **Federal Communication Commission Interference Statement**

This equipment has been tested and found to comply with the limits for a Class B digital device, pursuant to Part 15 of the FCC Rules. These limits are designed to provide reasonable protection against harmful interference in a residential installation.

This equipment generates, uses and can radiate radio frequency energy and, if not installed and used in accordance with the instructions, may cause harmful interference to radio communications. However, there is no guarantee that interference will not occur in a particular installation. If this equipment does cause harmful interference to radio or television reception, which can be determined by turning the equipment off and on, the user is encouraged to try to correct the interference by one of the following measures:

- . Reorient or relocate the receiving antenna.
- . Increase the separation between the equipment and receiver.
- . Connect the equipment into an outlet on a circuit different from that to which the receiver is connected.
- . Consult the dealer or an experienced radio/TV technician for help.

***FCC Caution:*** To assure continued compliance, any changes or modifications not expressly approved by the party responsible for compliance could void the user's authority to operate this equipment. (Example - use only shielded interface cables when connecting to computer or peripheral devices).

### ***FCC Radiation Exposure Statement***

This equipment complies with FCC RF radiation exposure limits set forth for an uncontrolled environment. This equipment should be installed and operated with a minimum distance of 1 centimeters between the radiator and your body.

This transmitter must not be co-located or operating in conjunction with any other antenna or transmitter.

The antennas used for this transmitter must be installed to provide a separation distance of at least 1 cm from all persons and must not be co-located or operating in conjunction with any other antenna or transmitter.

This device complies with Part 15 of the FCC Rules. Operation is subject to the following two conditions:

- (1) This device may not cause harmful interference, and (2) This device must accept any interference received, including interference that may cause undesired operation.

### **Industry Canada Statement**

This device complies with Industry Canada licence-exempt RSS standard.

Operation is subject to the following two conditions: (1) this device may not cause interference, and (2) this device must accept any interference, including interference that may cause undesired operation of the device.

Le présent appareil est conforme aux CNR d'Industrie Canada applicables aux appareils radio exempts de licence. L'exploitation est autorisée aux deux conditions suivantes : (1) l'appareil ne doit pas produire de brouillage, et (2) l'utilisateur de l'appareil doit accepter tout brouillage radioélectrique subi, même si le brouillage est susceptible d'en compromettre le fonctionnement.

### **IC Radiation Exposure Statement:**

This equipment complies with IC RSS-102 radiation exposure limit set forth for an uncontrolled environment. This equipment should be installed and operated with minimum distance 1 cm between the radiator and your body.

Cet équipement est conforme aux CNR-102 d'Industrie Canada. Cet équipement doit être installé et utilisé avec une distance minimale de 1 centimètres entre le radiateur et votre corps. Cet émetteur ne doit pas être co-localisées ou opérant en conjonction avec autre antenne ou émetteur. Les antennes utilisées pour cet émetteur doivent être installés et fournir une distance de séparation d'au moins 1 centimètre de toute personne et doit pas être co-située ni fonctionner en conjonction avec une autre antenne ou émetteur.

The device for operation in the band 5150–5250 MHz is only for indoor use to reduce the potential for harmful interference to co-channel mobile satellite systems.

Les dispositifs fonctionnant dans la bande de 5 150 à 5 250 MHz sont réservés uniquement pour une utilisation à l'intérieur afin de réduire les risques de brouillage préjudiciable aux systèmes de satellites mobiles utilisant les mêmes canaux.