

Internal Photo: Antenna Shroud Removed



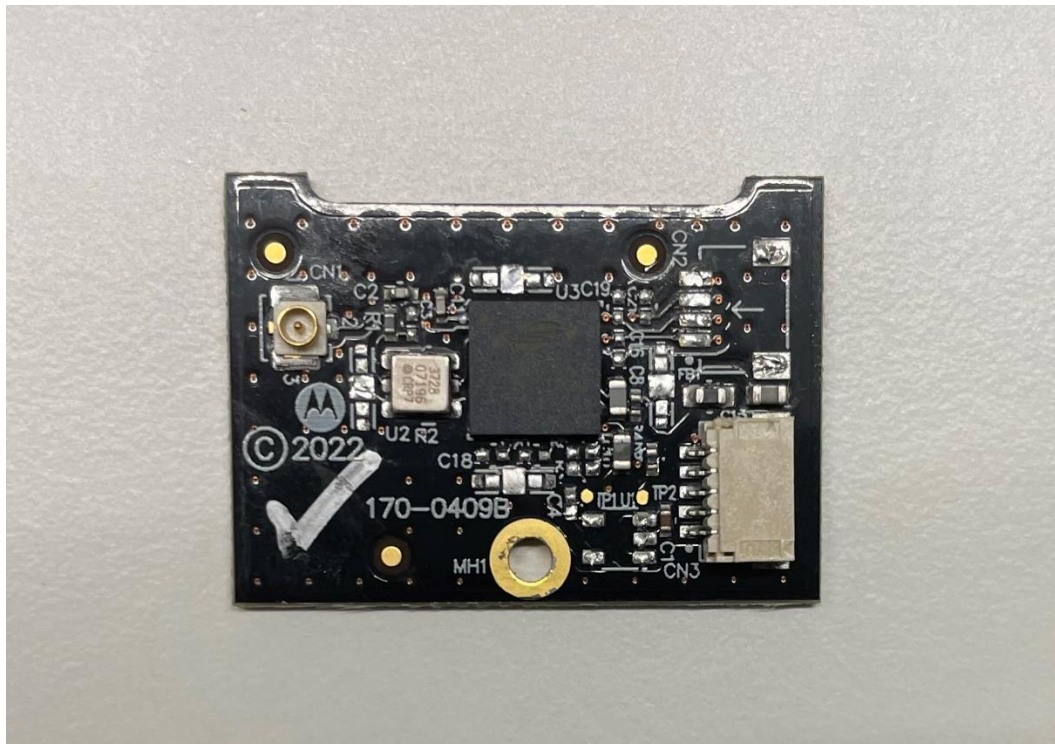
Internal Photo: RF Board & Antenna in Shroud



Internal Photo: RF Board Removed from Shroud with Antenna

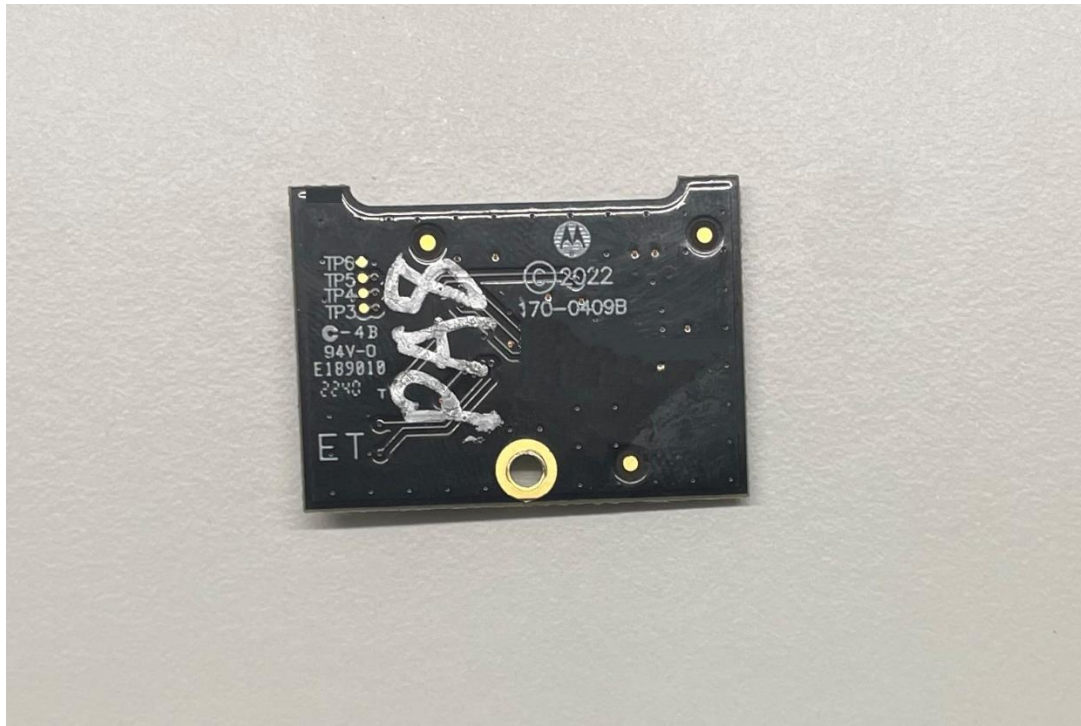


Internal Photo: Top of RF Board

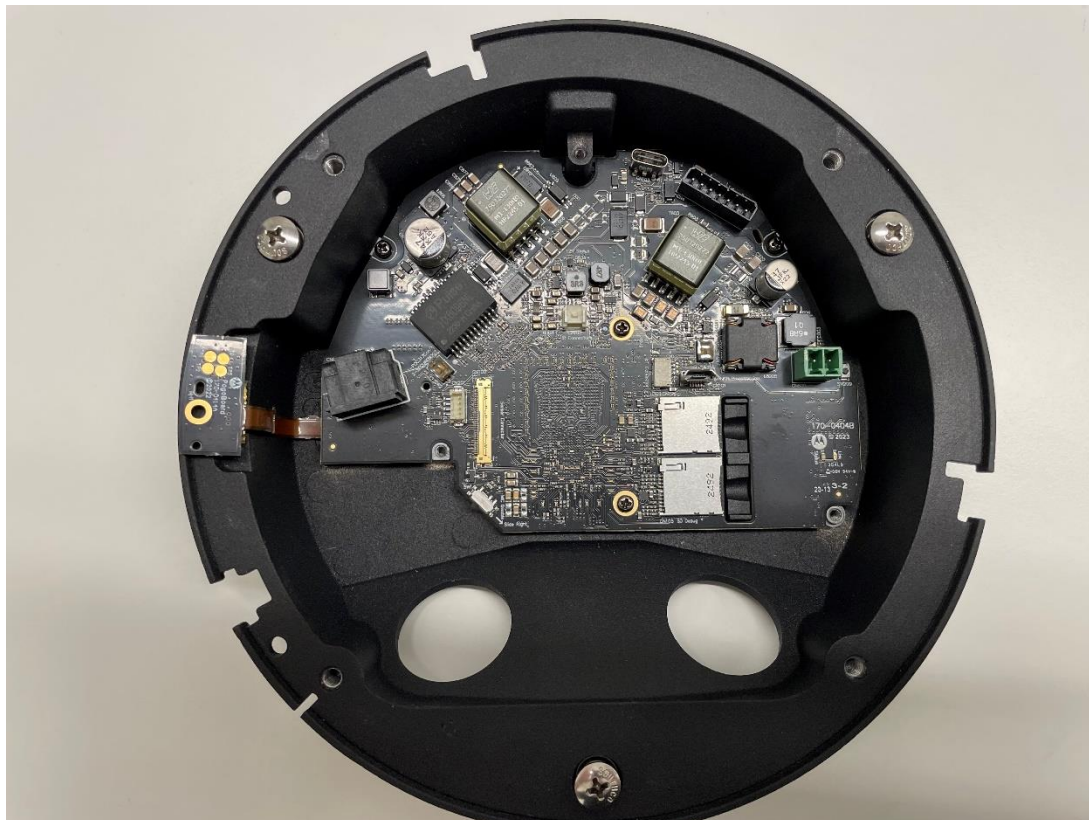




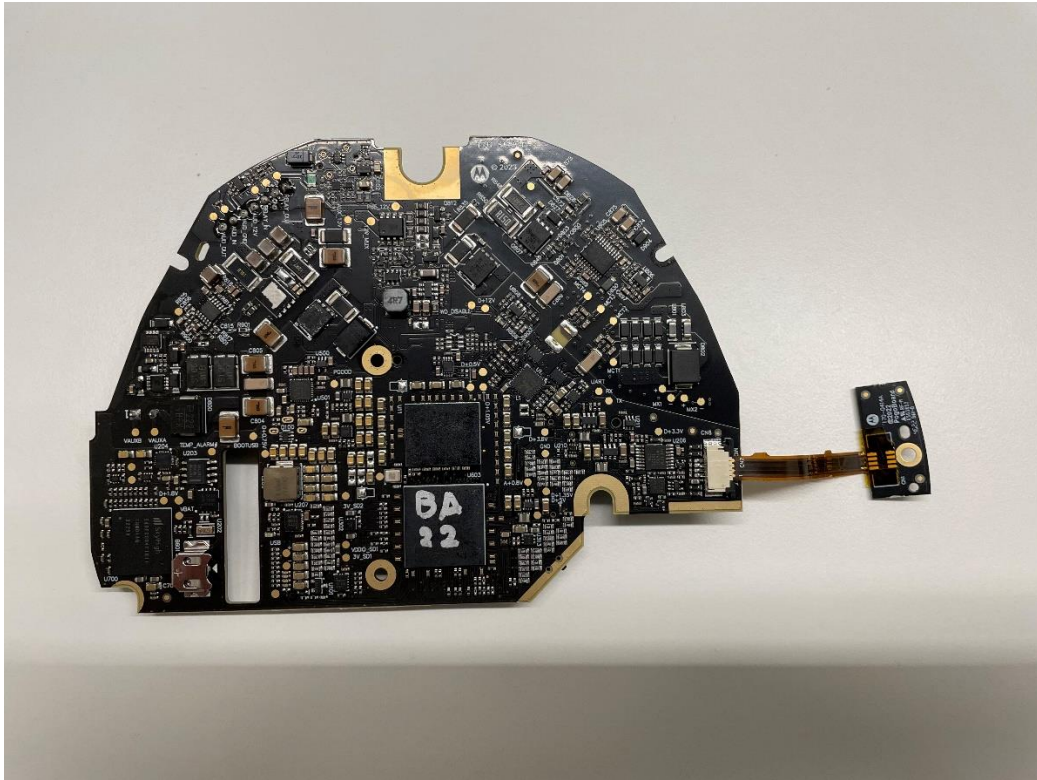
Internal Photo: Bottom of RF Board



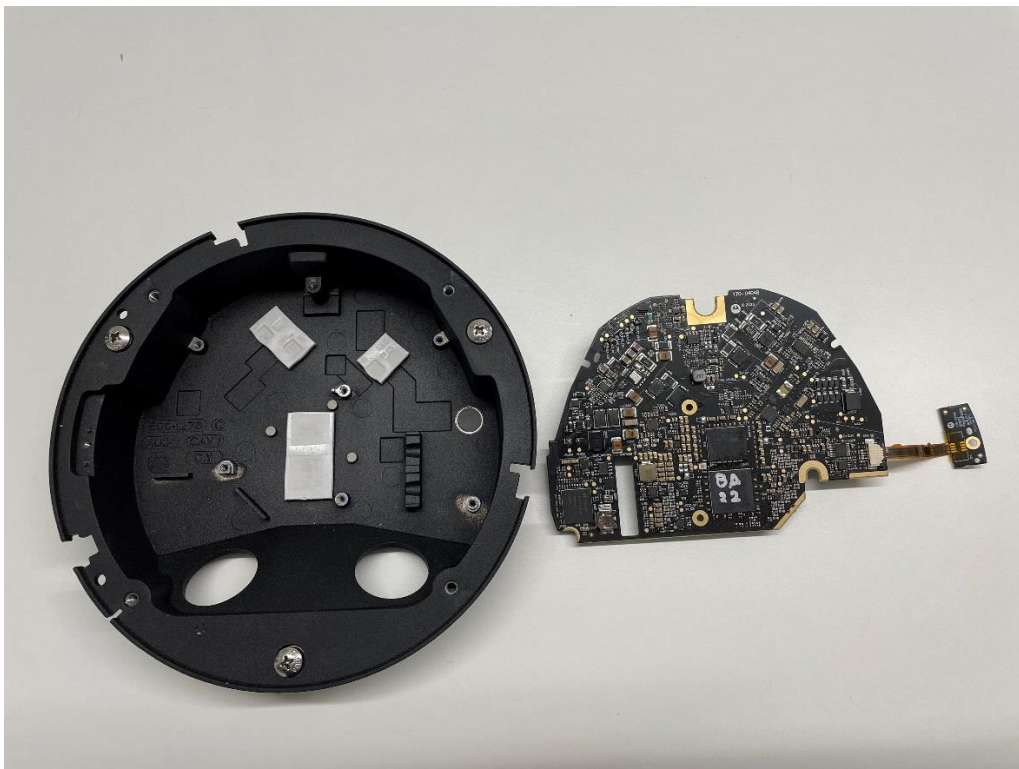
Internal Photo: Main Board in Base Pan



Internal Photo: Main Board Bottom

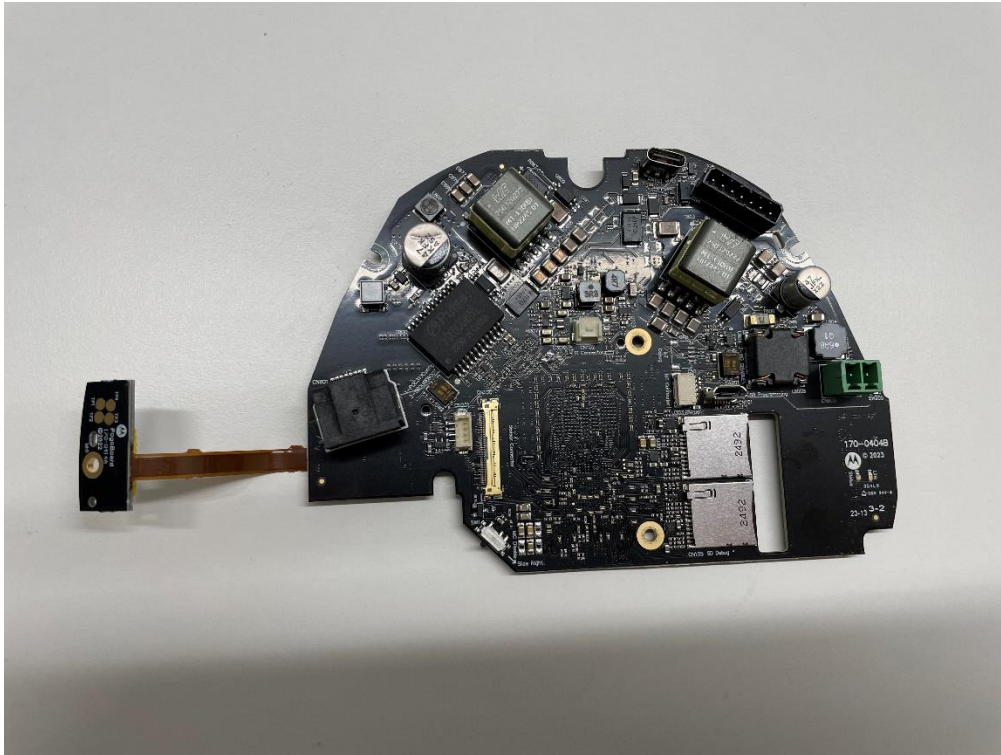


Internal Photo: Main Board Bottom with Base Pan





Internal Photo: Main Board Top



Internal Photo: Main Board Top with Base Pan

