

EasyLights.com
HolidayCoro.com Part Number 931
FM-Audio Board User's Manual V2.0
Revised August 9, 2018

FCC ID: 2ANC4HCELFM

Installation and Instructions

Changes or modifications not expressly approved by EasyLights could void the user's authority to operate the equipment.

Your FM-Audio board connects to an EasyLights controller via a 10 pin ribbon cable. The picture below illustrates the FM-Audio board connected to an EasyLights Pix16 controller.

You must connect the cable properly or you may damage the FM-Audio board or the controller board.

The RED wire in the cable indicates the position of PIN #1.

With Power OFF to the controller board, please do the following:

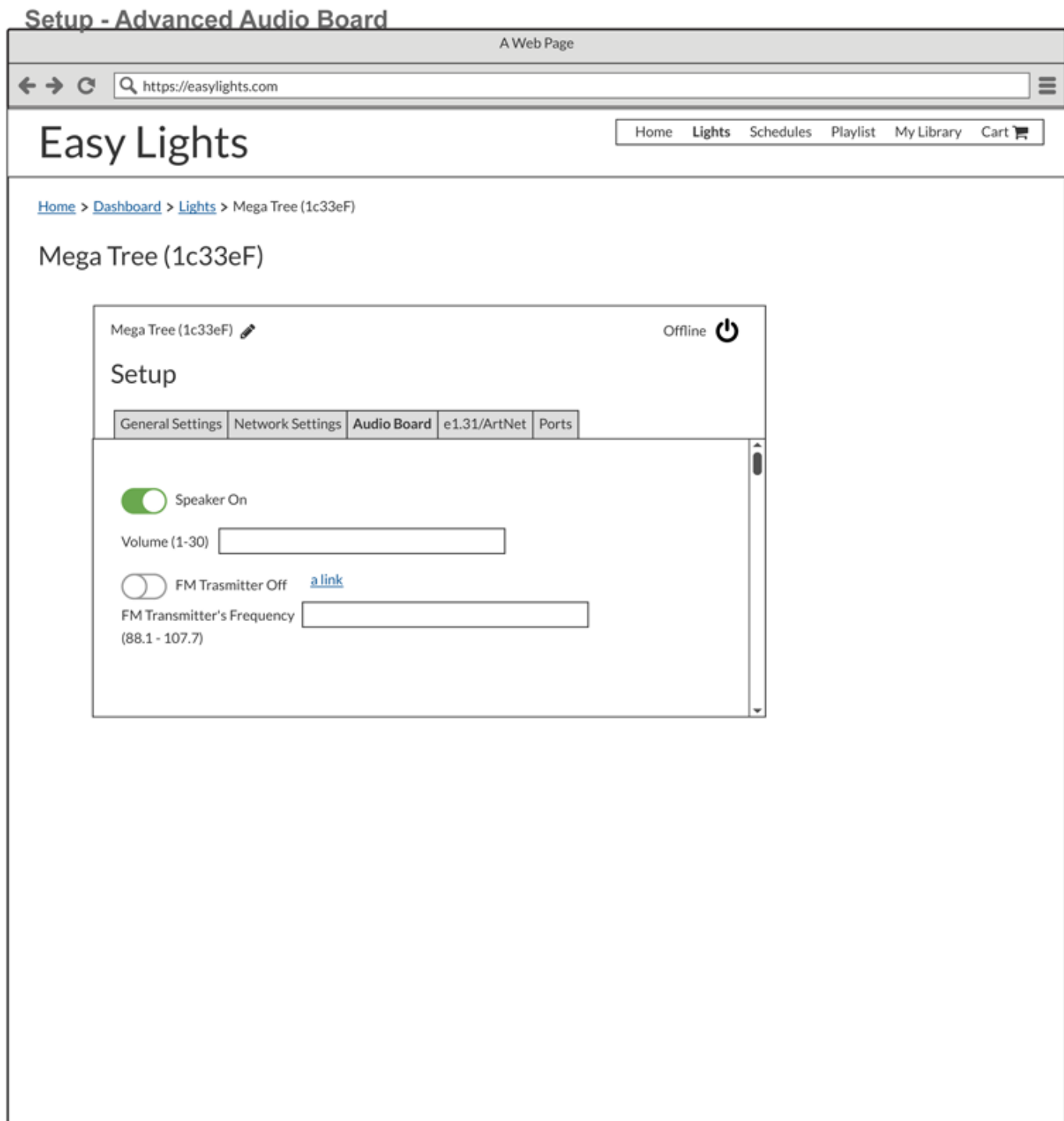
Insert one of the connectors on the ribbon cable into the FM-Audio so that the RED wire on the cable is positioned at "Pin #1 – Colored Wire" label on the board.

Position the other connector of the ribbon cable so that the RED wire is also located by PIN #1 on the controller board.

Please see the picture below for clarification.

To set the FM channel that your audio will broadcast on, please visit EasyLights.com and log into your account.

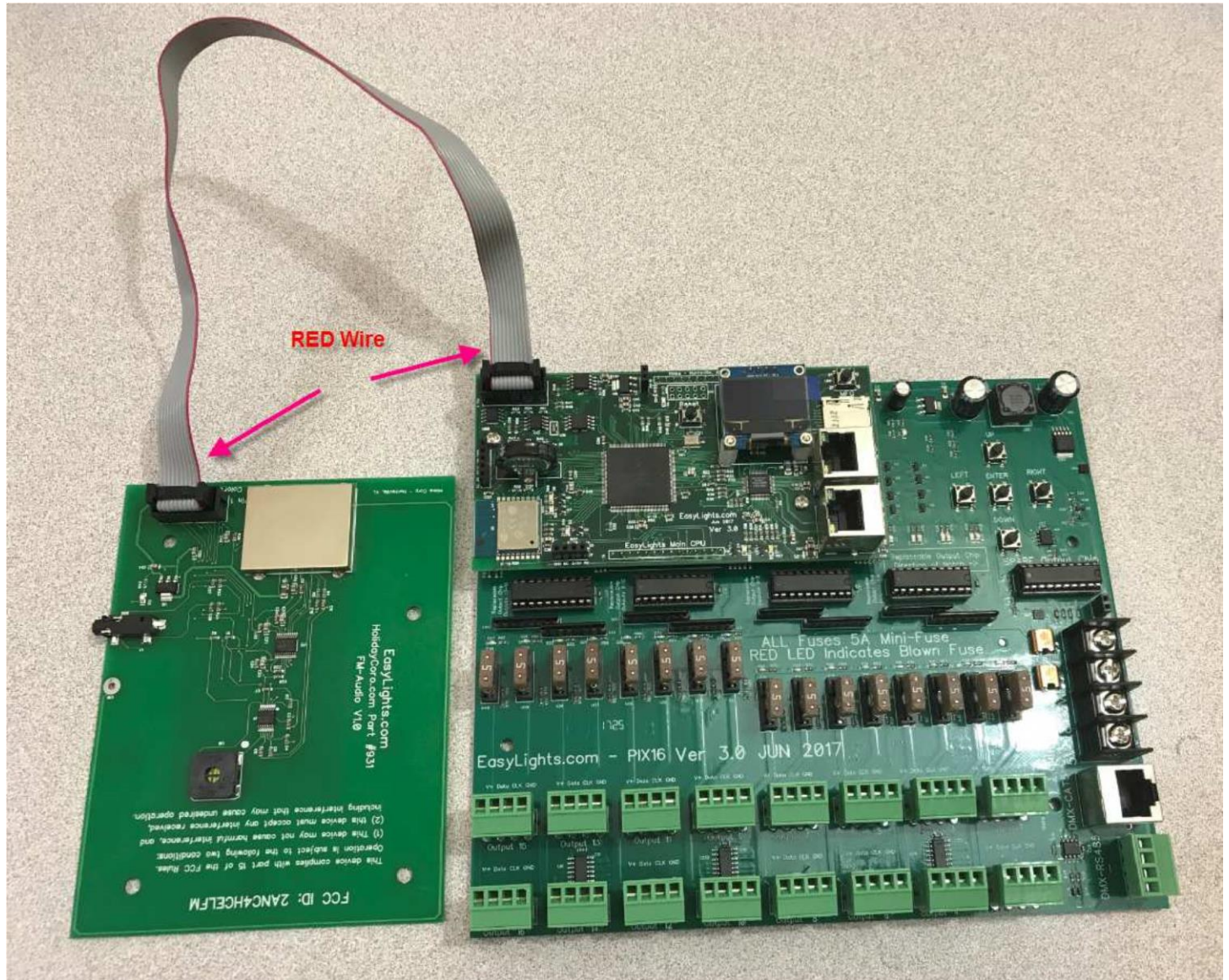
Navigate to the FM Set-Up page and select the FM Channel you wish to use – Please see an example of the web page below:



You can select a frequency between 88.1 Mhz and 107.7 Mhz. You should select a FM channel (frequency) that does not currently have an active broadcasting station or one that is very weak.

Your FM-Audio board should be able to transmit between 50 and 150 feet.

Position the FM-Audio board in a vertical or horizontal position within your protective container – whichever one produces the best results.



When you purchased your FM-Audio it came with a “Label” that MUST securely attached to exterior of any container you package the FM-Audio/controller in and visible when in use.

The “Label” supplied with your FM-Audio board contains the following information:

Contains FCC ID: 2ANC4HCELFM

This device complies with Part 15 of the FCC Rules. Operation is subject to the following two conditions: (1) this device may not cause harmful interference, and (2) this device must accept any interference received, including interference that may cause undesired operation.

Should you require your own label – it must say:

Contains FCC ID: 2ANC4HCELFM

Additional Information:

Note: This equipment has been tested and found to comply with the limits for a Class B digital device, pursuant to part 15 of the FCC Rules. These limits are designed to provide reasonable protection against harmful interference in a residential installation. This equipment generates, uses and can radiate radio frequency energy and, if not installed and used in accordance with the instructions, may cause harmful interference to radio communications. However, there is no guarantee that interference will not occur in a particular installation. If this equipment does cause harmful interference to radio or television reception, which can be determined by turning the equipment off and on, the user is encouraged to try to correct the interference by one or more of the following measures:

- Reorient or relocate the receiving antenna.
- Increase the separation between the equipment and receiver.
- Connect the equipment into an outlet on a circuit different from that to which the receiver is connected.
- Consult the dealer or an experienced radio/TV technician for help.