

SPECIFICATION

SHEET FOR APPROVAL

(Revision: R: A1)

CUSTOMER(客户名称)	TCL通力	
CS P/N(客户机种)	水纹仪	
PART NAME(品名)	WIFI天线组件	线长L=40mm
MODEL NAME(型号名称)	SWY WIFI ANT	
FREQUENCY(频率)	2.4~2.5GHz	
ZTX NO.(物料编号)	2.00005825	
DATE(日期)	2023-08-02	

CUSTOMER			
QA CHECKED	ME CHECKED	RF CHECKED	MANAGER CHECKED

Remark(备注):

Sign(客户确认签字盖章): _____

Shenzhen ZTX Communication Technology Co., Ltd				
MANAGER CHECKED	MANAGER CHECKED	ME CHECKED	RF CHECKED	LISTER
		覃乐	王佩	



Shenzhen ZTX Communication Technology Co., Ltd

地址: 深圳市宝安区石岩镇石龙大道34号(腾达工业园)

Add: No. 34 Shilong Avenue, Shiyan Town, Baoan District, Shenzhen (Tengda Industrial Park)

邮编: 518000

电话: 0755-27588320

传真: 0755-27588045

<http://www.chinaztx.com>

ANTENNA SPECIFICATION

CUS P/N :水纹仪WIFI天线组件
ZTX P/N :水纹仪WIFI天线组件

ApplicationDate:Aug,02,2023
Editor:

Rev: R:A1
Page 1 of 7

Revision history

版本	日期	状态
A1	2023-08-02	首版

ANTENNA SPECIFICATION

CUS P/N :水纹仪WIFI天线组件

ApplicationDate:Aug,02,2023

Rev: R:A1

ZTX P/N :水纹仪WIFI天线组件

Editor:

Page 2 of 7

Index

		Revision history	1
		Index	2
1		Mechanical Specification	3
	1-1	Mechanical Specification (水纹仪 WIFI天线)	3
2		Test equipment	4
3		Antenna test data	5
	3-1	VSWR	5
	3-2	No-source test data	5
	3-3	2D Radiation Pattern Results	6
	3-4	Environment treatment	6
4		The packing way	7

ANTENNA SPECIFICATION

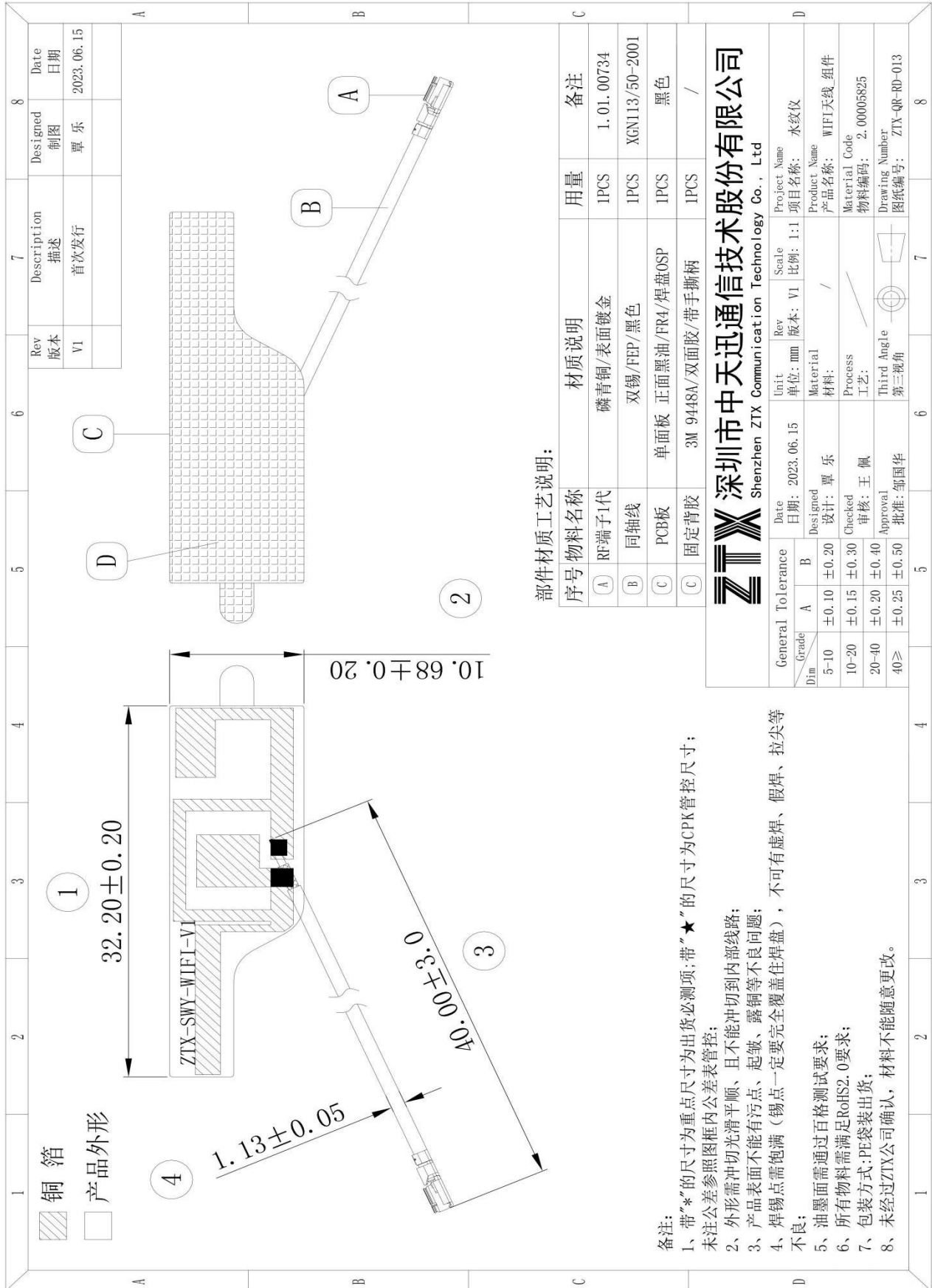
CUS P/N :水纹仪WIFI天线组件
ZTX P/N :水纹仪WIFI天线组件

ApplicationDate:Aug,02,2023
Editor:

Rev: R:A1
Page 3 of 7

1. Mechanical Specification

1-1 Mechanical Configuration (水纹仪WIFI天线)



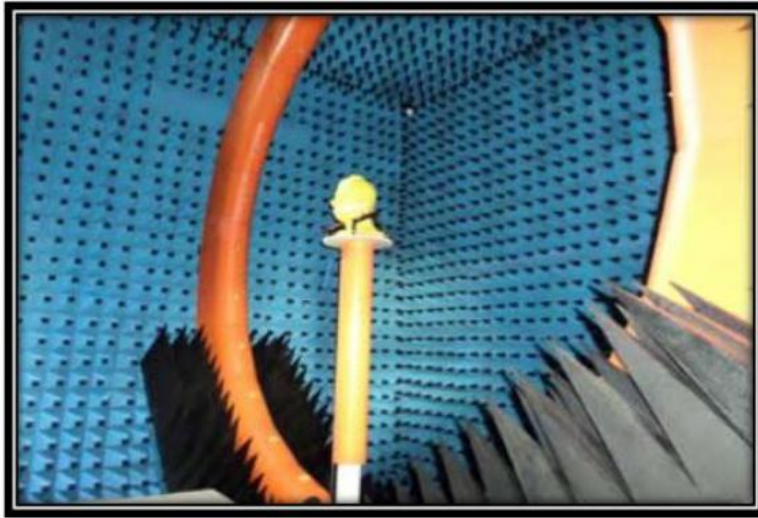
ANTENNA SPECIFICATION

CUS P/N :水纹仪WIFI天线组件
ZTX P/N :水纹仪WIFI天线组件

ApplicationDate:Jun,19,2023
Editor:

Rev: R:A1
Page 4 of 7

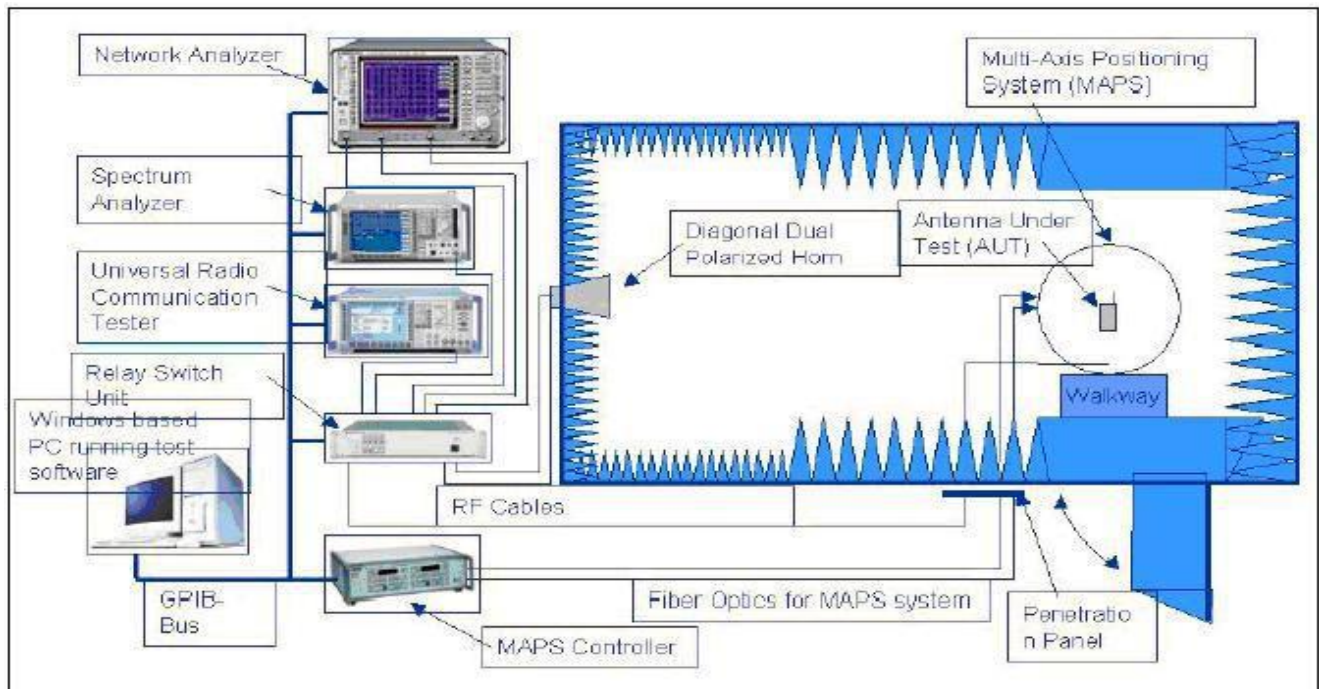
2. Test equipment



Owned 6 microwave dark room, equipped 2 sets world leading France Satimo SG24 OTA certification test systems (one in SHENZHEN, another one in Shanghai), ETS OTA Standard test system, Blue test reverberation test system which is High repeatability, high accuracy and high resolution. It can quickly provide accurate test reports, fully meet the CTIA standards.

Testing range:

Support active, passive testing of GSM/CDMA/WCDMA/TD-SCDMA/LTE/WIFI/WLAN/WiMax/BT/GPS/MIMO/UWB within0.4-6G.



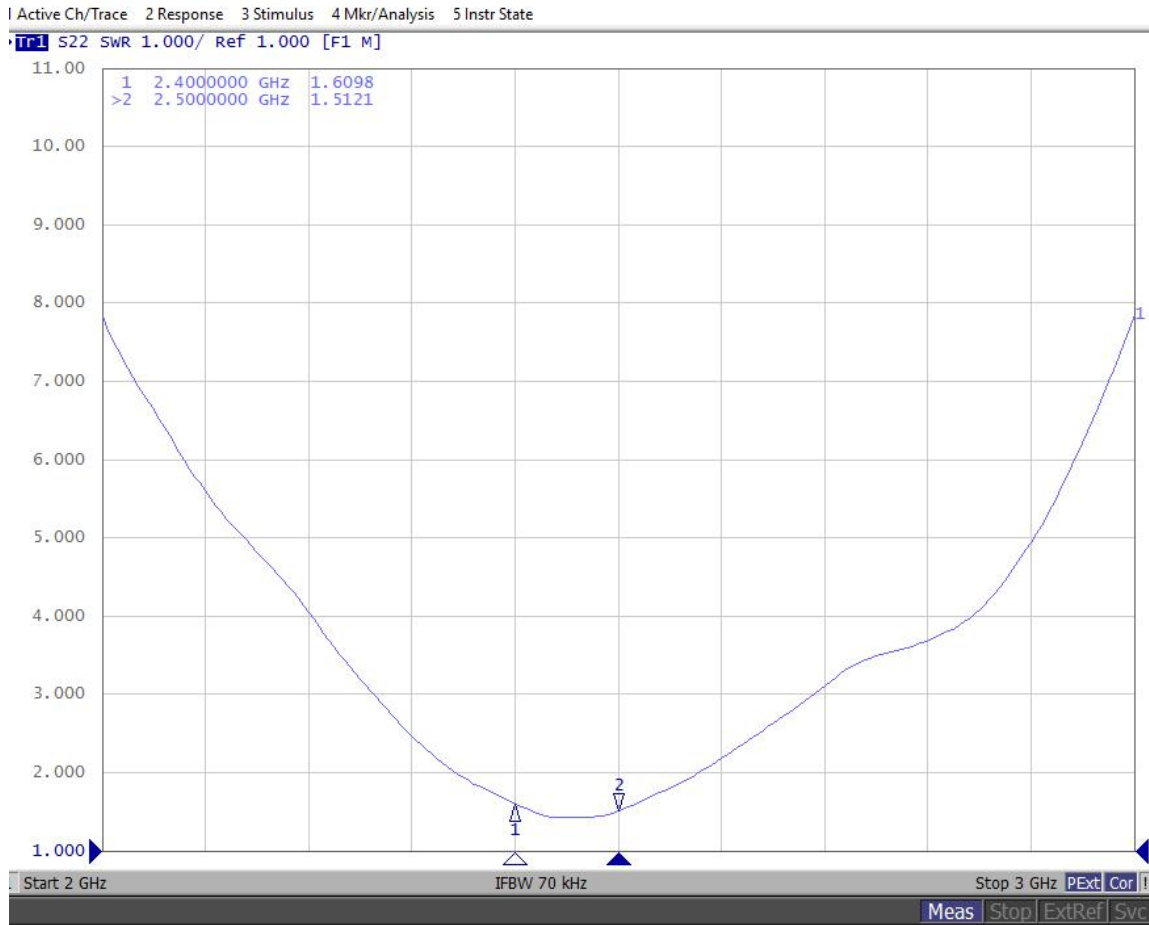
ANTENNA SPECIFICATION

CUS P/N :水纹仪WIFI天线组件
ZTX P/N :水纹仪WIFI天线组件

ApplicationDate:Jun,19,2023
Editor:

Rev: R:A1
Page 5 of 7

3.Antenna test data 3-1 VSWR



3-2 No-source test data

Frequency	Efficiency	Efficiency . dB	Gain . dB
2400MHz	48%	-3.17	2.61
2410MHz	50%	-3.04	3.30
2420MHz	50%	-2.98	3.23
2430MHz	51%	-2.91	3.18
2440MHz	52%	-2.86	2.91
2450MHz	53%	-2.75	2.89
2460MHz	55%	-2.61	3.84
2470MHz	54%	-2.66	3.56
2480MHz	53%	-2.74	3.47
2490MHz	53%	-2.76	3.25
2500MHz	52%	-2.82	2.64

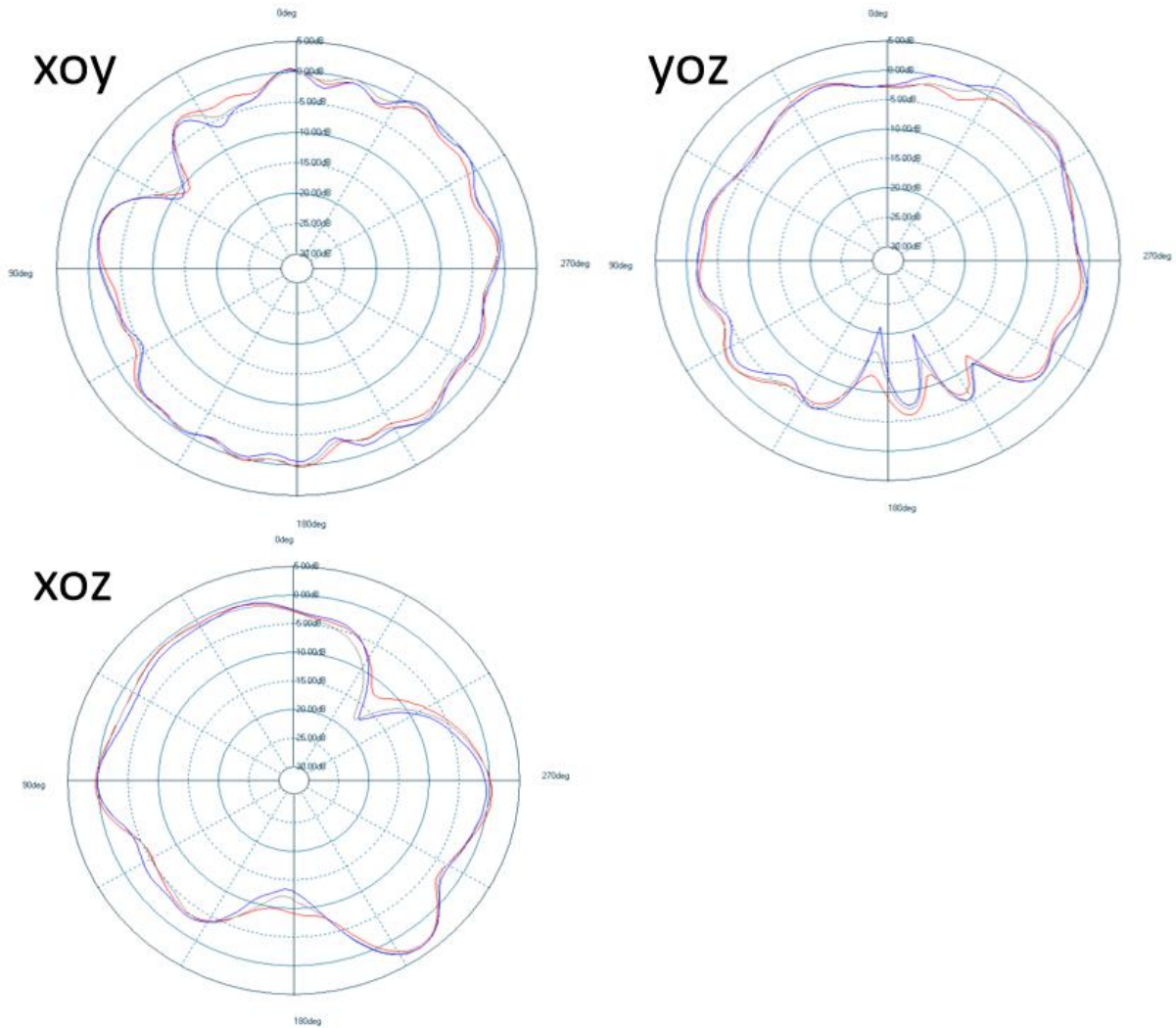
ANTENNA SPECIFICATION

CUS P/N :水纹仪WIFI天线组件
ZTX P/N :水纹仪WIFI天线组件

ApplicationDate:Jun,19,2023
Editor:

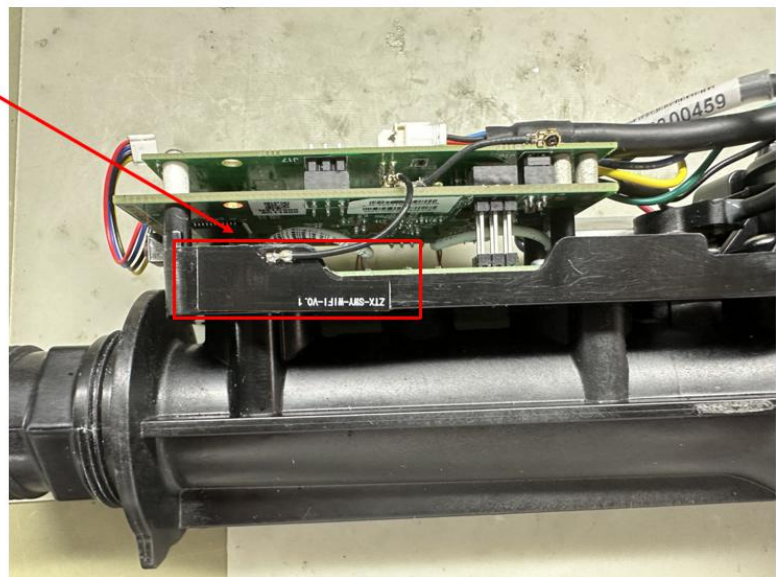
Rev: R:A1
Page 6 of 7

3-3 2D Radiation Pattern Results



3-4 Environment treatment

WiFi2.4G天线位置



ANTENNA SPECIFICATION

CUS P/N :水纹仪WIFI天线组件

ApplicationDate:Jun,19,2023

Rev: R:A1

ZTX P/N :水纹仪WIFI天线组件

Editor:

Page 7 of 7

4.The packing way



包装规范&作业指导书

客户名称	TCL通力电子	产品型号	水纹仪		产品名称	WIFI天线组件
纸箱规格	K=K45*32.5*21CM		物料编号	1.12.000002	用量	1PCS/箱
PE封口袋	360*280*0.10mm		物料编号	1.12.000026	用量	20PCS/箱
PE开口袋	240*160*0.05mm		物料编号	1.12.000030	用量	XXXPCS/箱
纸板规格	2PCS/箱*2		其他物料	标签/胶带		
每箱数量	2000~5000PCS	PE开口袋数量	50~100PCS	PE封口袋数量	200~500PCS	
注意事项	1.客户物料编码和数量是否正确,标签必须用机打印的 2.内标签、外标签、出货报告、送货单内容需一致。 3.如是试产物料或有变更均需贴相应标识,尾数箱需贴尾数标识,内附检验报告等					

包装简图:

1.取(50~100pcs)产品装袋,贴物料标签;

2.将包装好的产品装入大袋(200~500pcs),贴物料标签;

3.将包装好的装箱(2000~5000pcs),贴物料标签;

4.封箱。



深圳市中天迅通信技术有限公司	
型号	020
品名	水纹仪(WIFI天线组件)
物料编号	000000000000
材料/颜色	蓝色
厂牌号	000000000000
数量	0000 PCS
生产日期	0000年00月00日
检验员	李金勇



NO	变更内容	变更人及日期
标签简图:	外箱简图:	
	<p>(注意外箱标签张贴的位置)</p>	

制表: 韦泓佳

审核: 向恒锋

核准: 党非非