

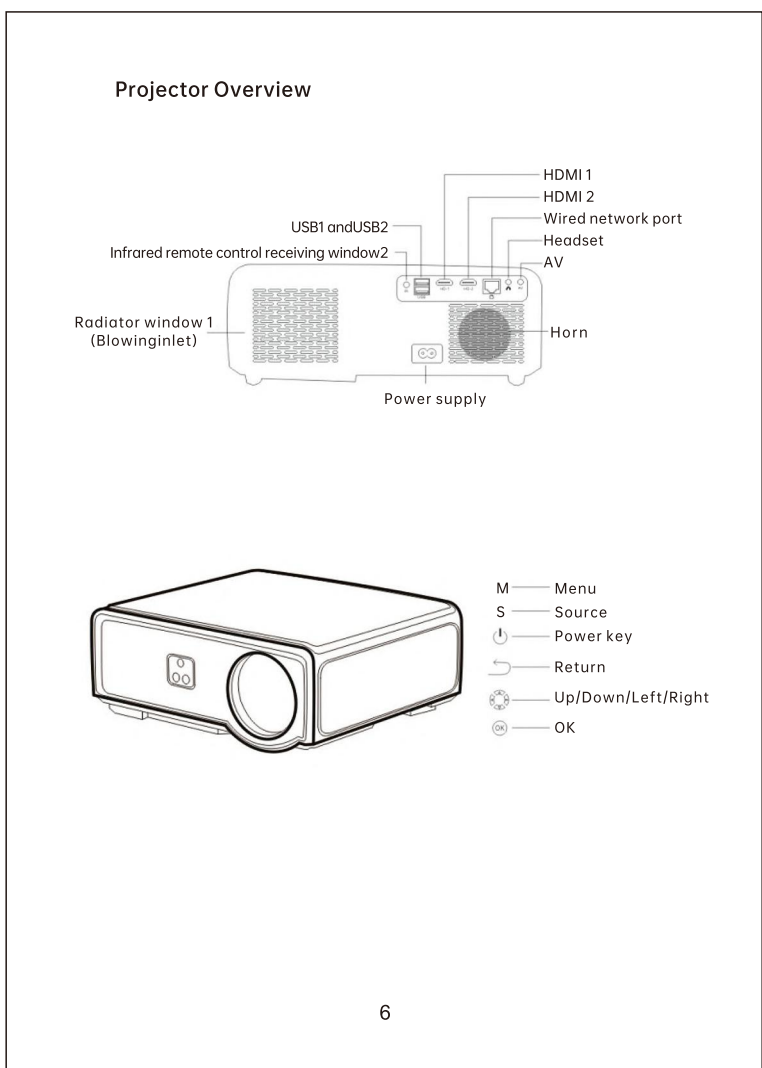
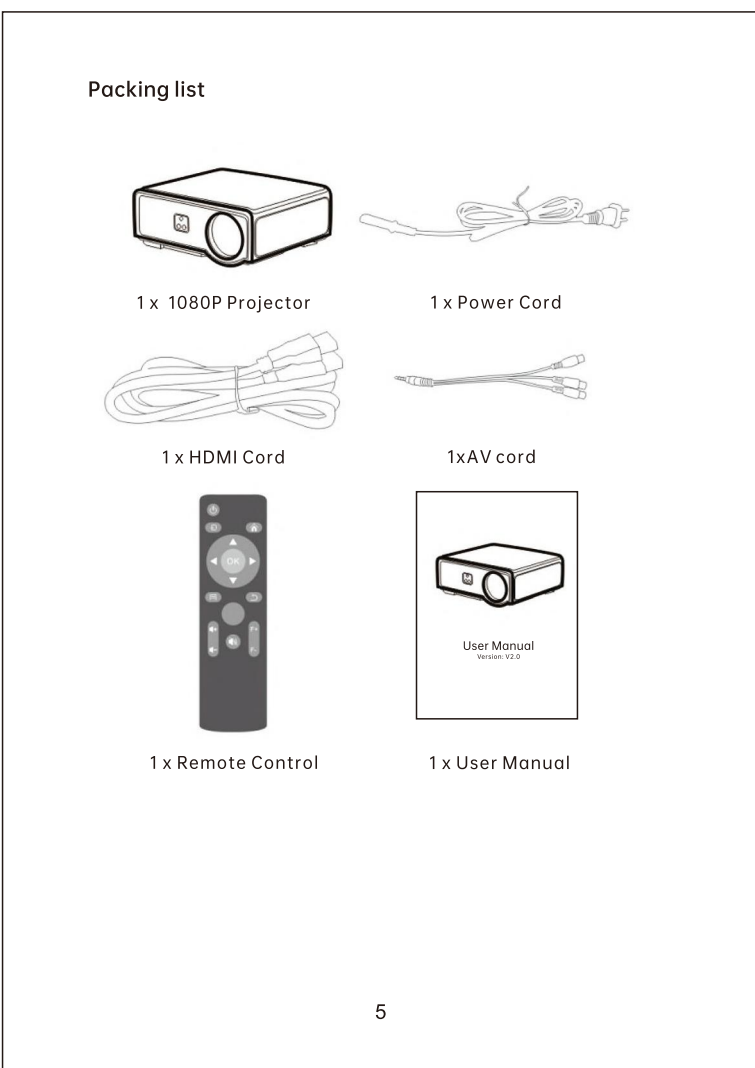
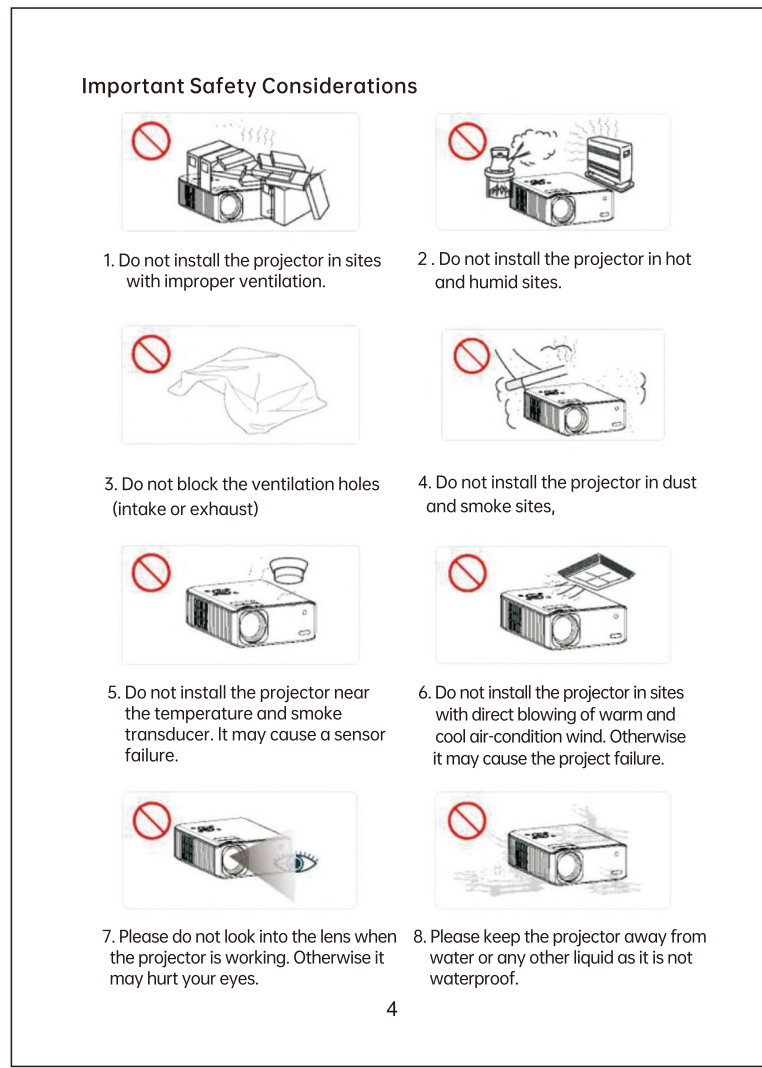
Catalog

| | |
|---|-------|
| Precautions | 2-3 |
| Important Safety Considerations | 4 |
| Packing list | 5 |
| Projector Overview | 6 |
| Media supported | 7 |
| Remote | 8 |
| Quick start | 9-12 |
| 1.Power on | |
| 2.How to Focus | |
| 3.How to Keystone Correction | |
| 4.How to install APP | |
| 5.How to Remove App | |
| 6.How to add shortcuts to "My Favorites" | |
| 7.How to remove shortcuts from "My Favorites" | |
| Projector Connection | 13-19 |
| For iOS device | |
| 1.Connecting to Mobile device | |
| For Android device | |
| 2.Connecting to Laptop/Macbook/PC | |
| Wireless connection for Win10 and above | |
| Wireless connection for MAC OS | |
| Wired connection | |
| 3.Connecting to Usb disk | |
| Play video | |
| Play music | |
| Play image | |
| Playing Office Suite | |
| 4.Connecting to the Fire Stick | |
| Settings | 20-23 |
| 1.Projection Settings | |
| 2.Network Settings | |
| 3.Bluetooth settings | |
| 4.Language and input Method | |
| 5.Date and Time | |
| 6.Other Settings | |

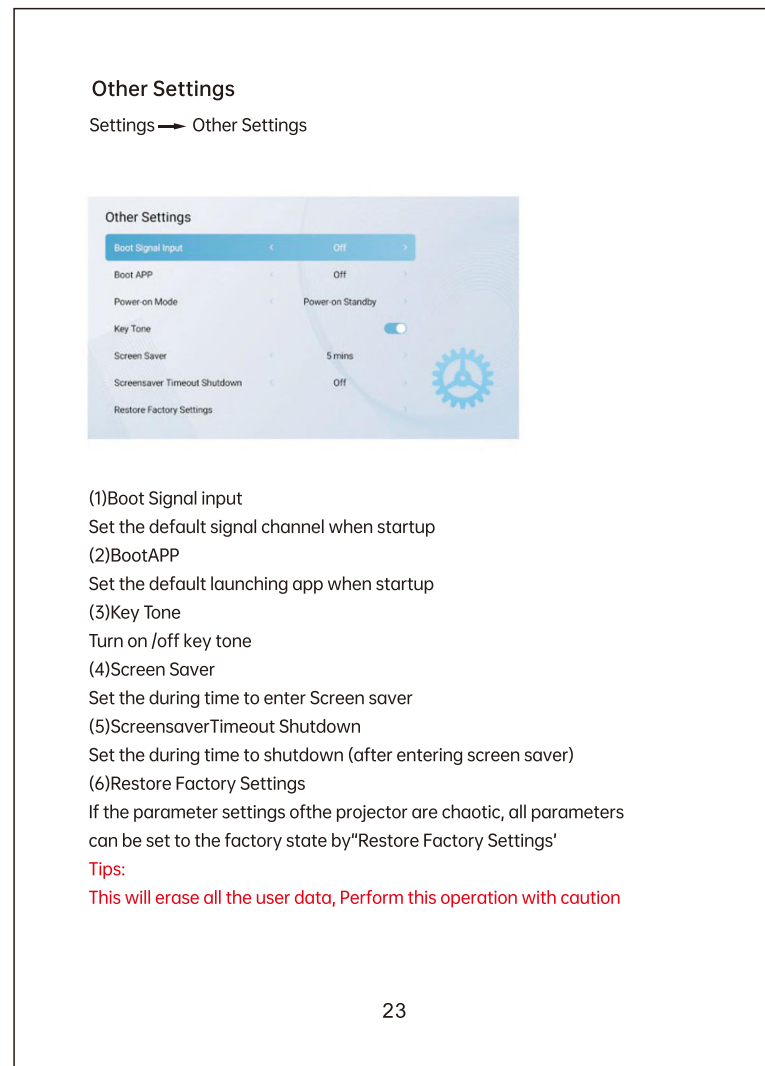
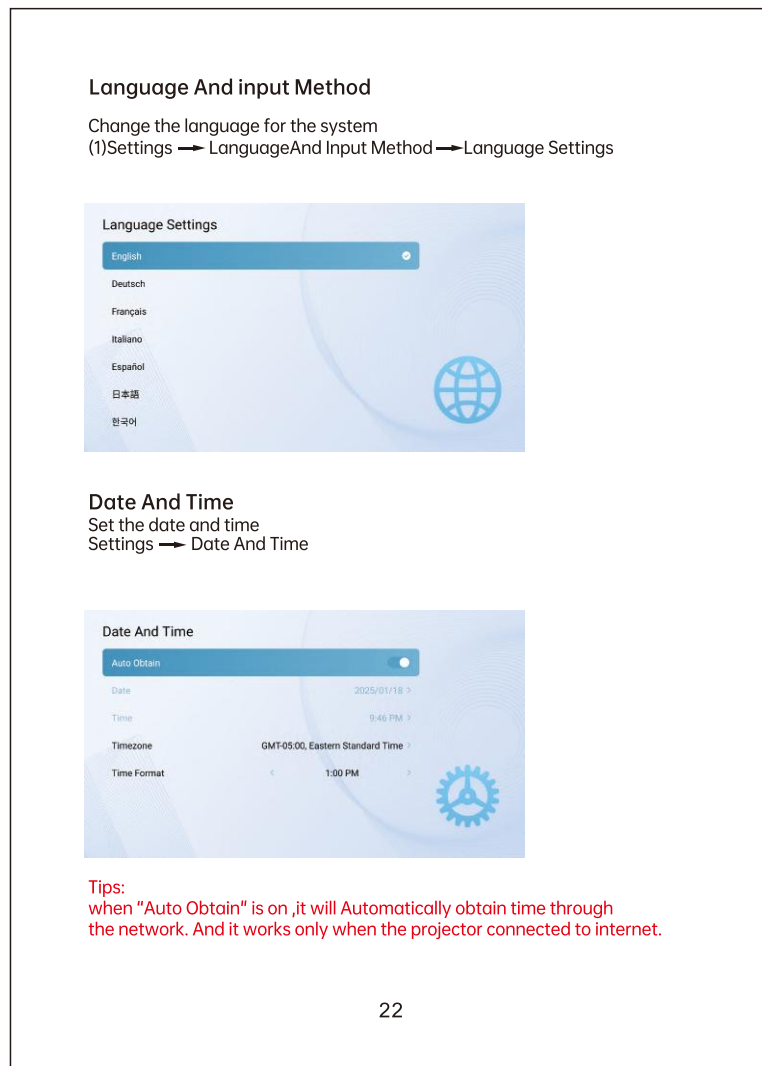
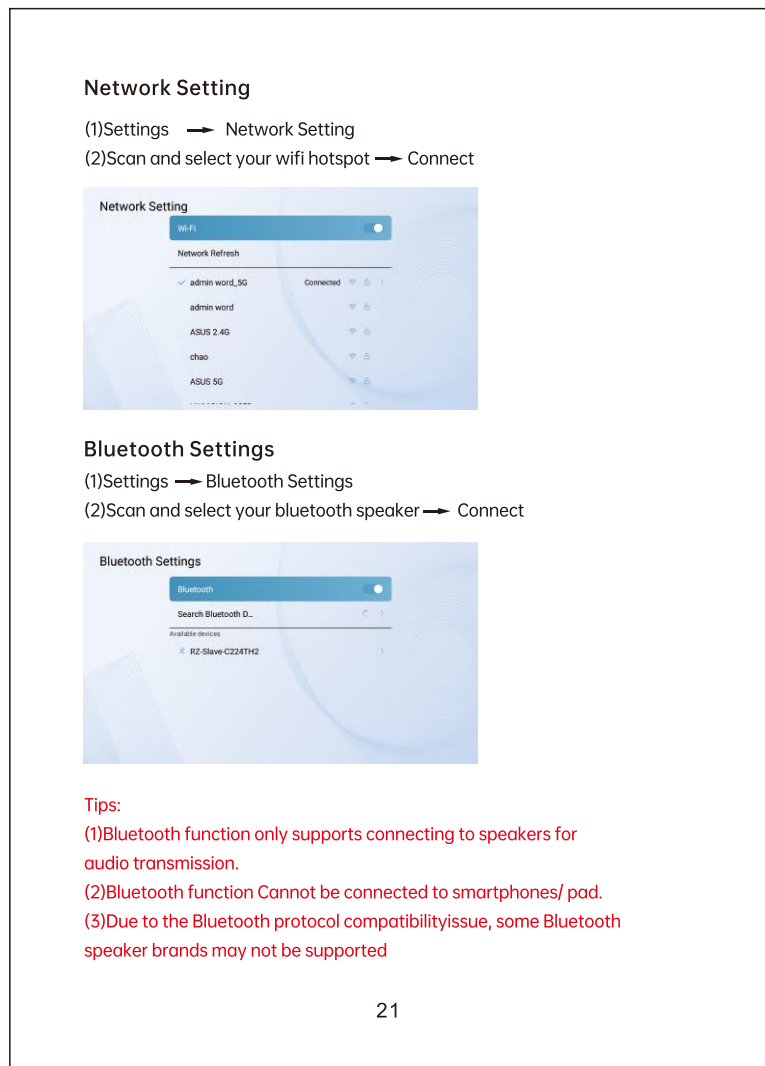
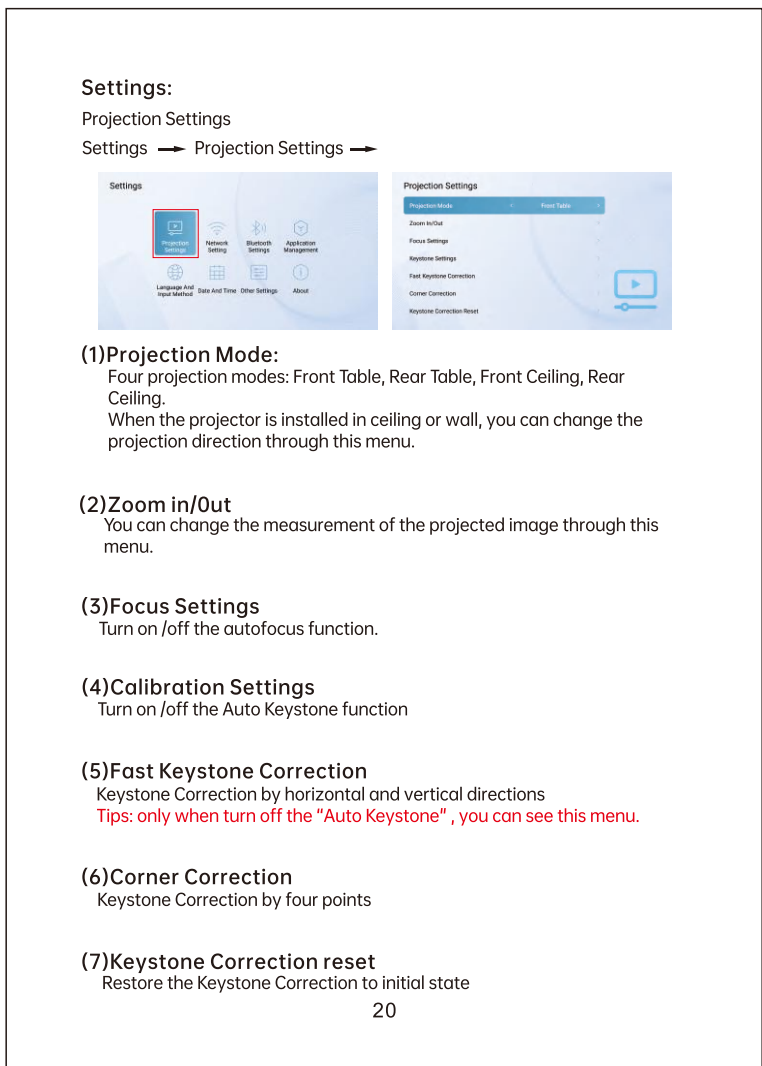
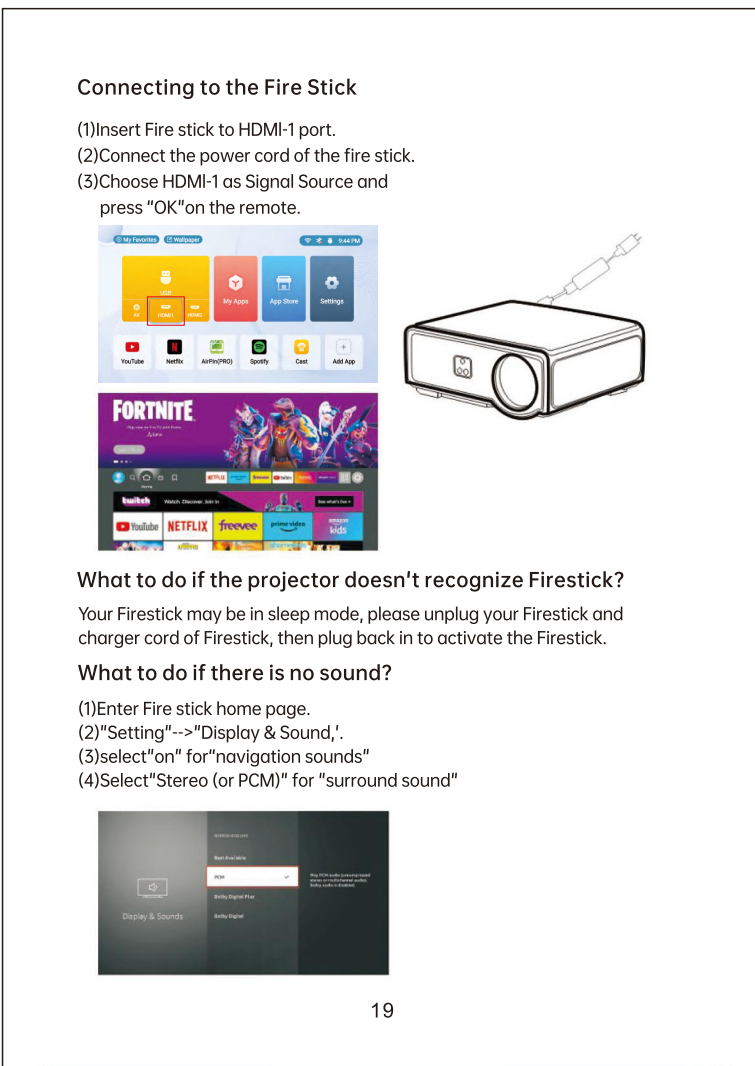
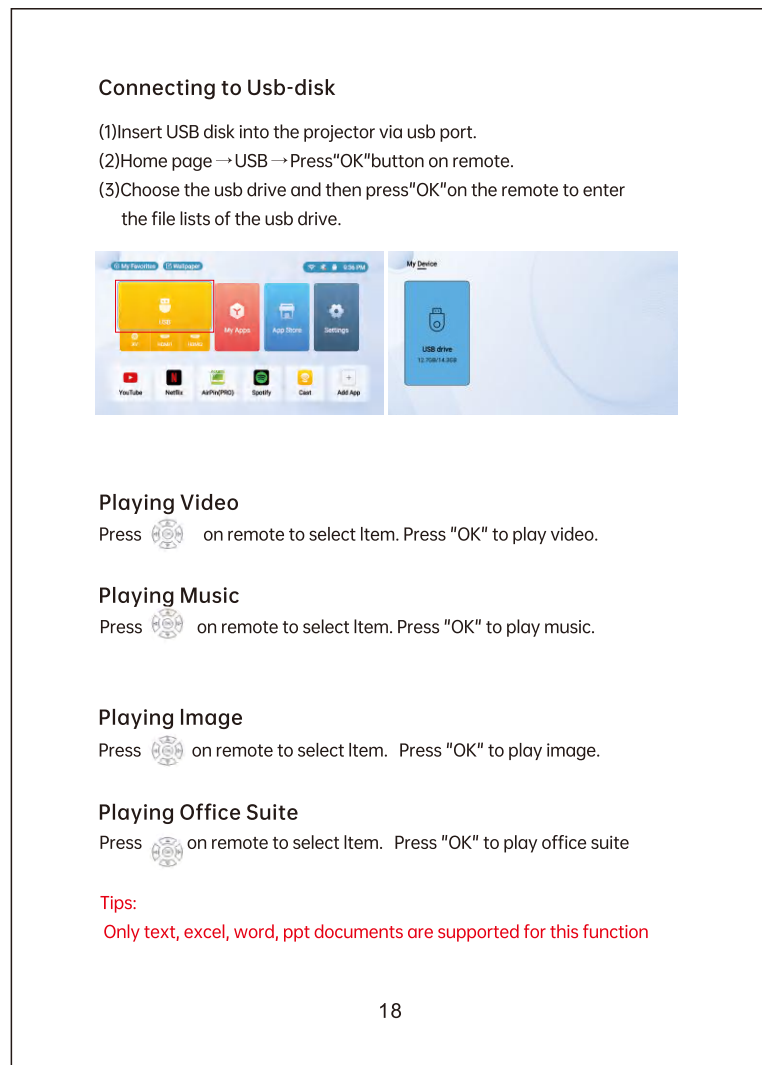
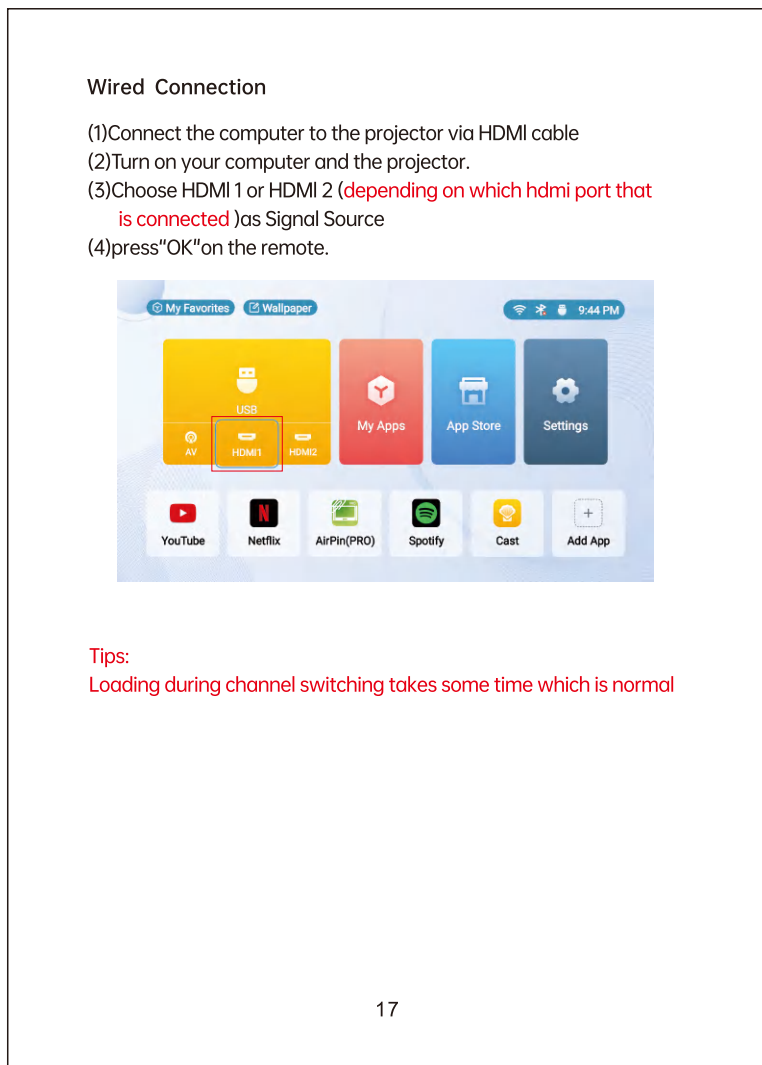
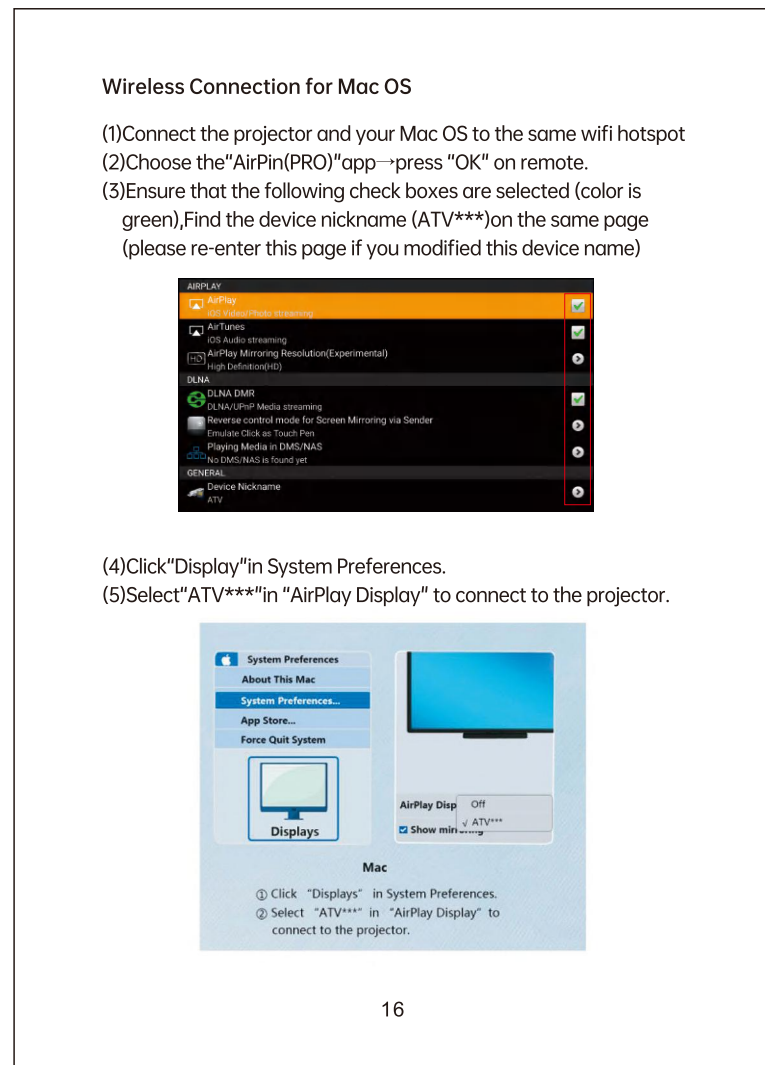
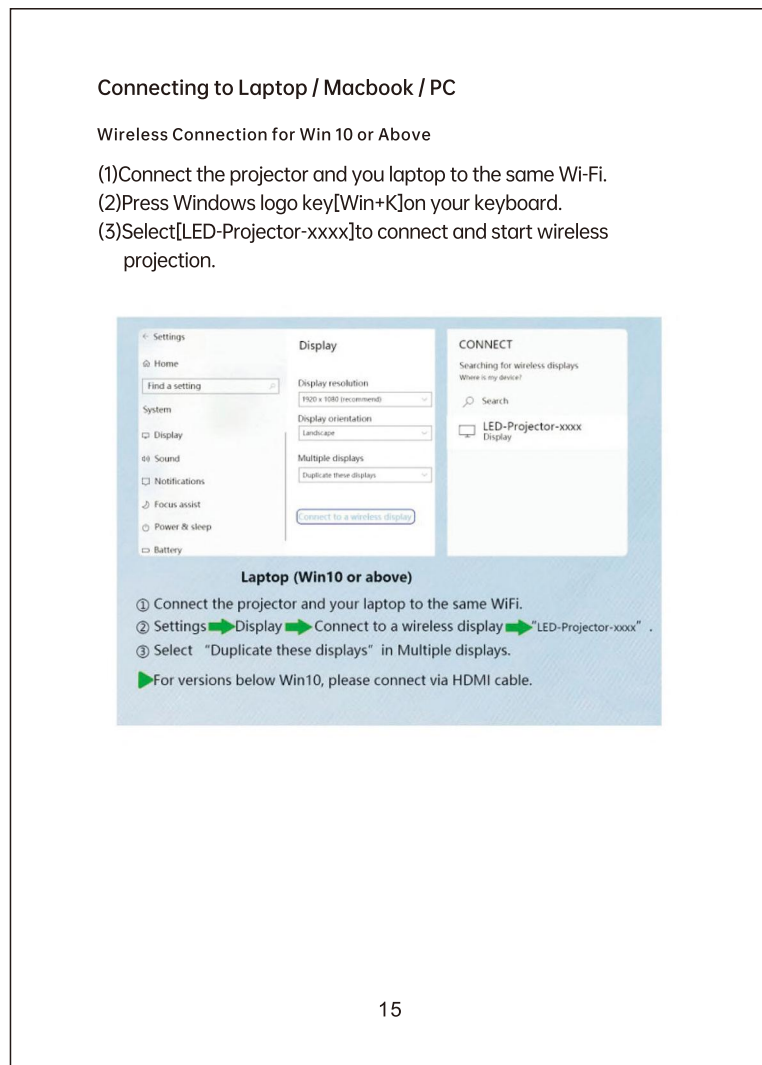
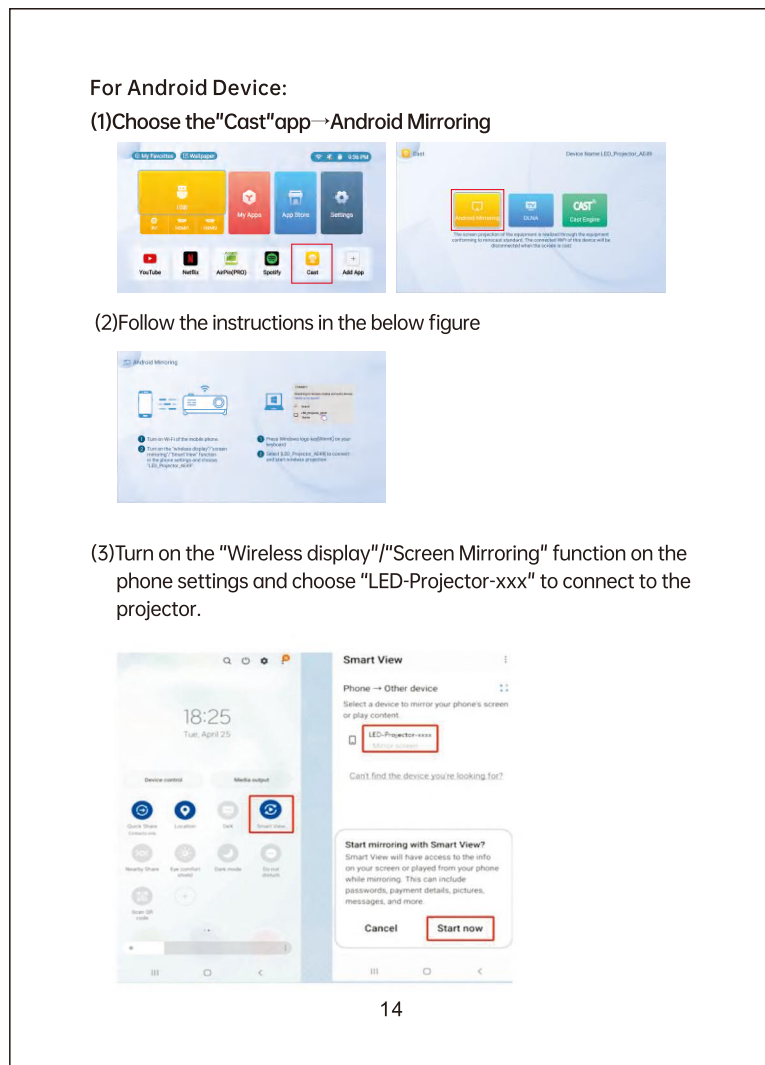
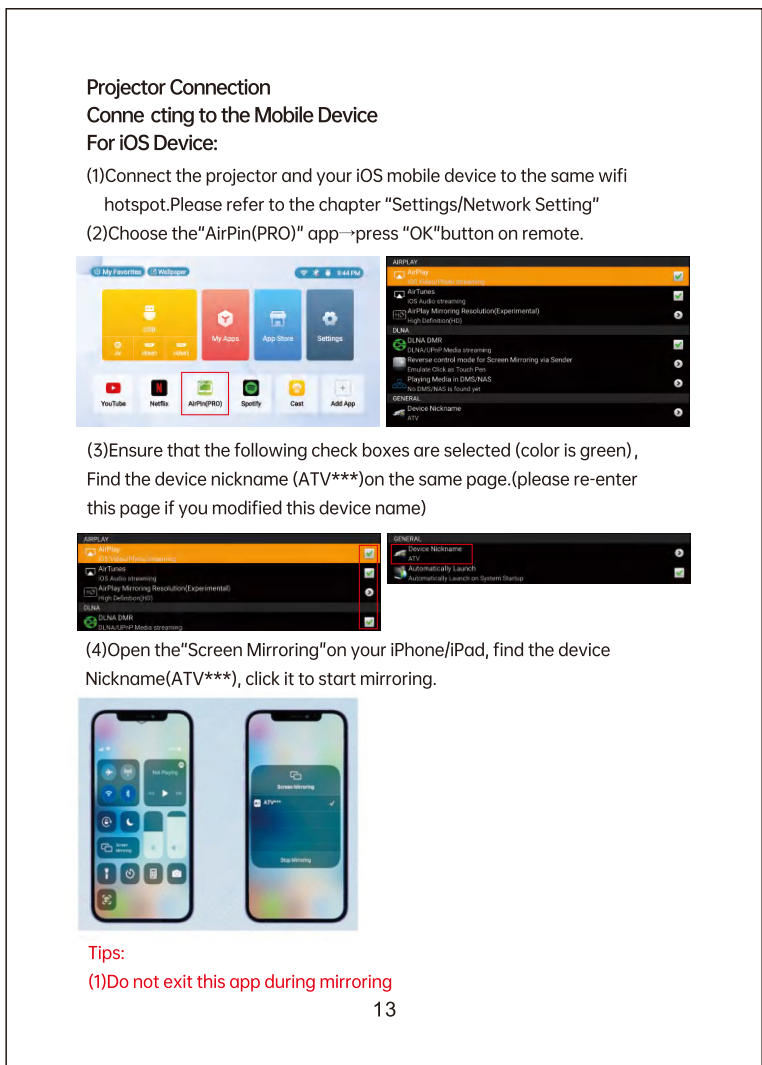
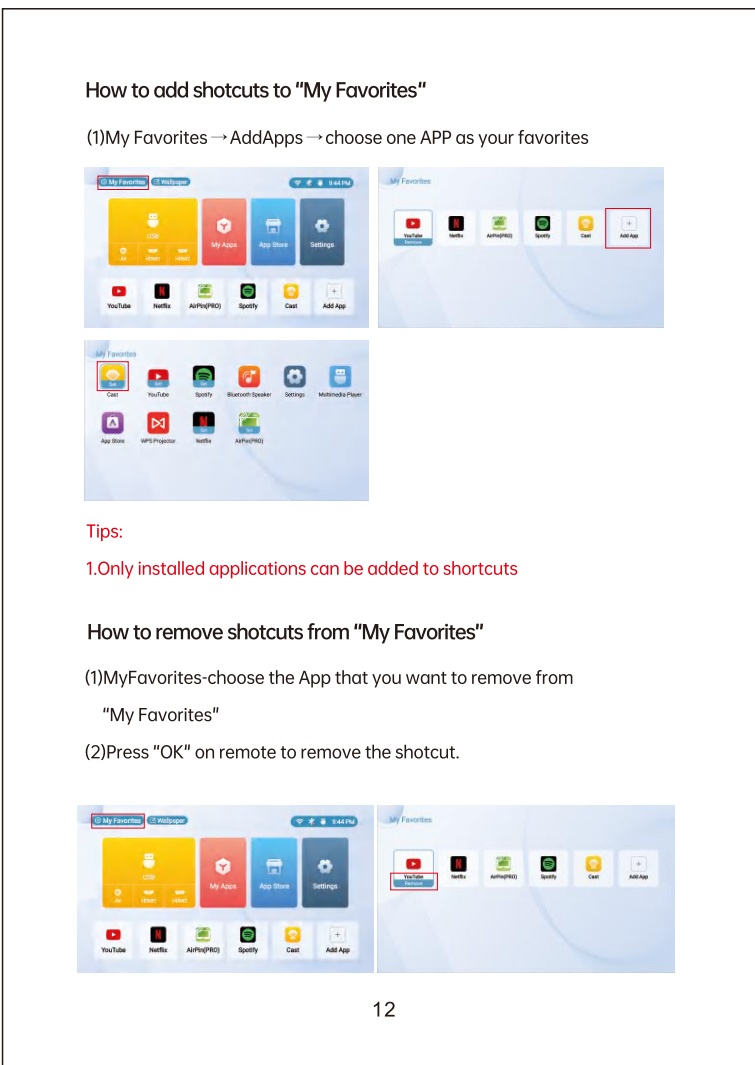
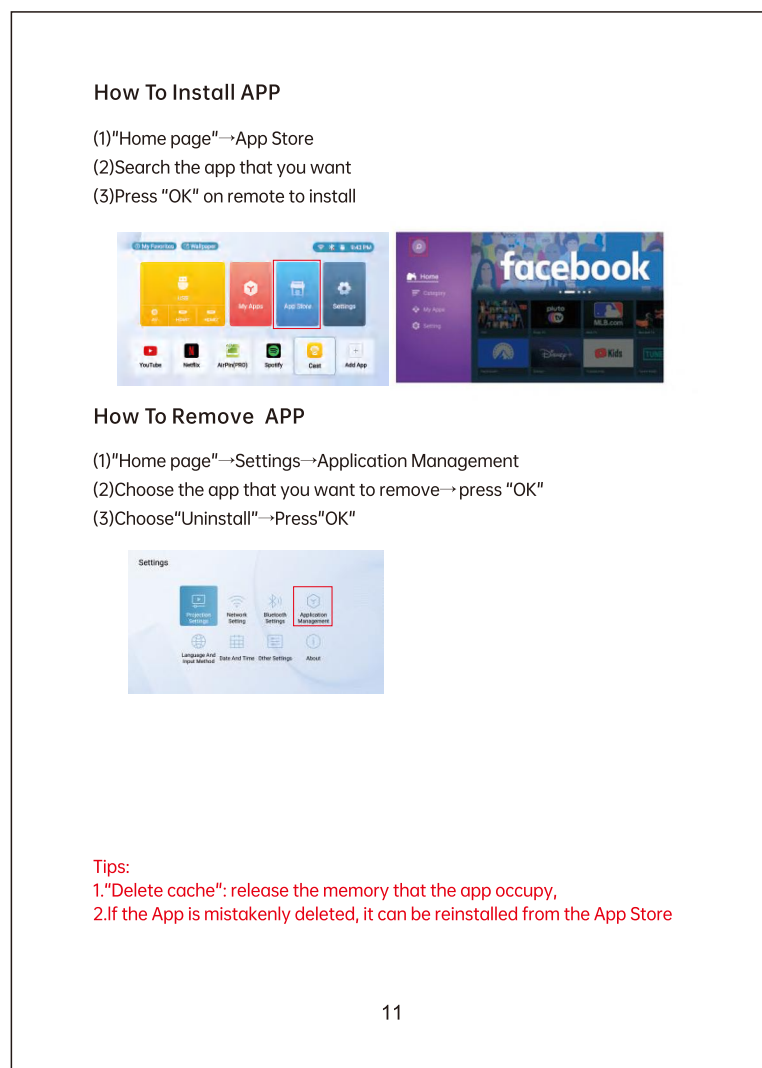
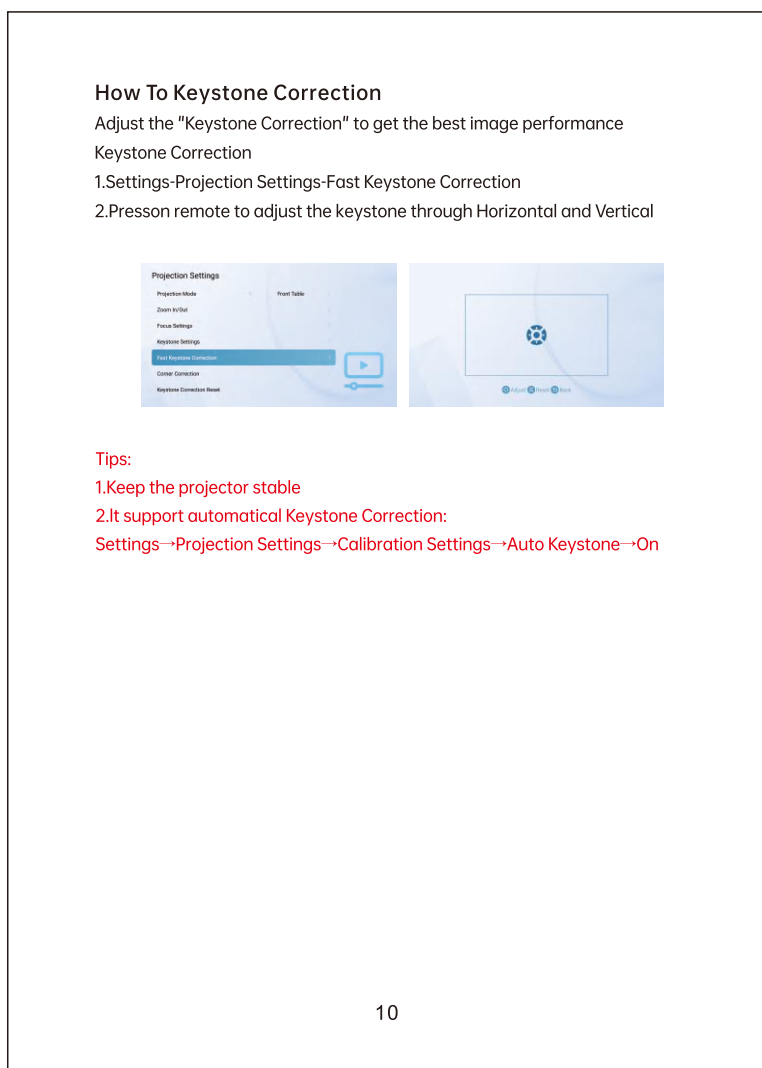
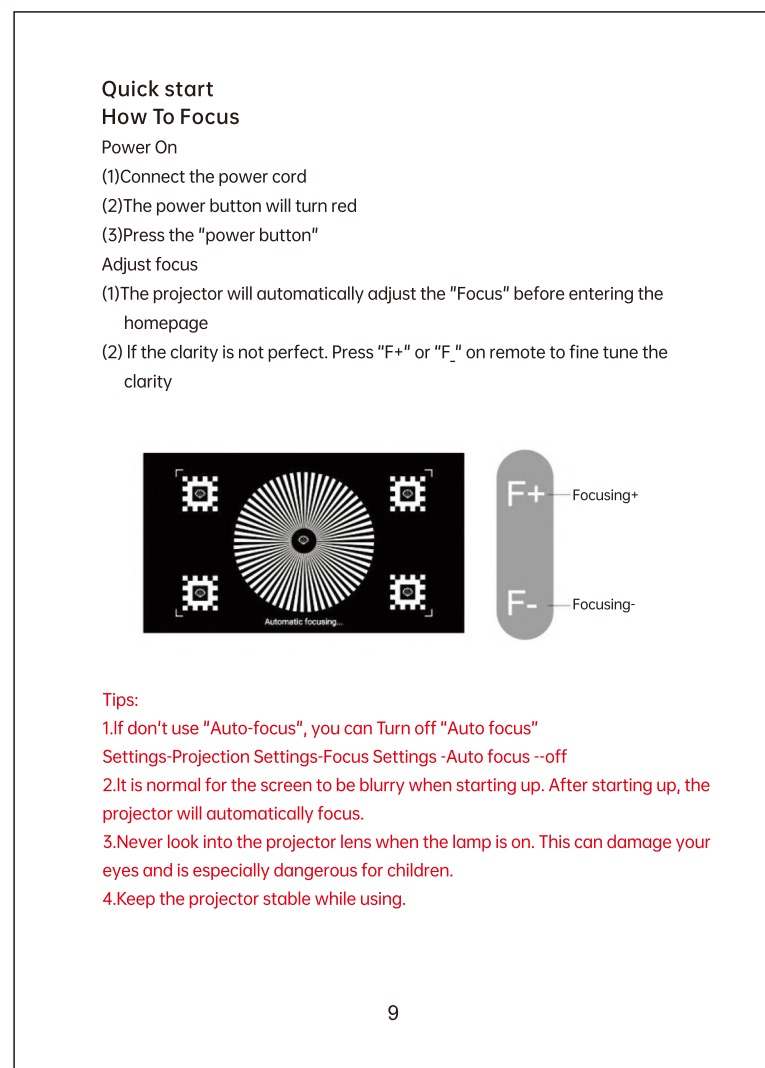
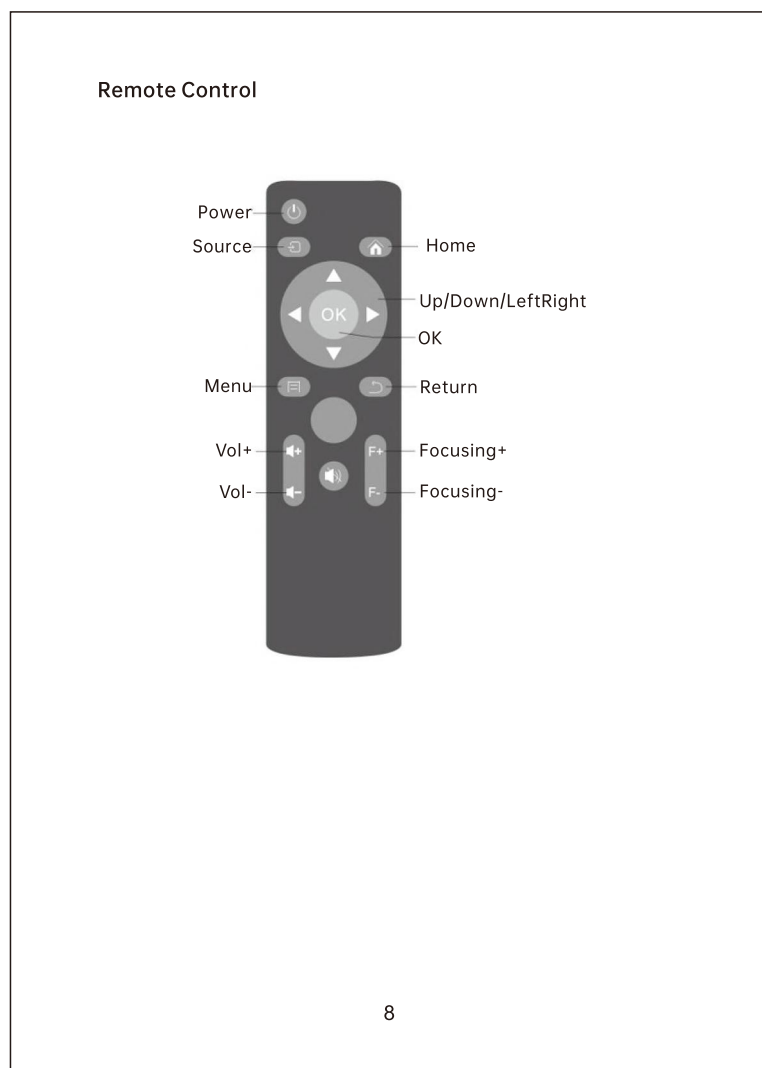


Precautions:
Installation
1.Please install the projector with mounting hardware when it is mounted on ceiling or wall. And make sure of stability and safety.
2.Make sure that the desktop or bracket on which the projector placed stable. Otherwise, it may cause the auto-focus function to not work properly.
3.Please use the projector with caution to avoid falling or hitting, which may damage the projector.
4.Please use the projector in a dark room for best results.
5.Please place the projector in an area that children cannot reach for use.
Notes on anti-fire and electric shock prevention
1.Make sure that the ventilation openings are adequately ventilated to avoid heat accumulation within the projector.
2.Do not insert any metal object, such as an iron wire or a screwdriver into the projector. Prevent foreign objects from falling into the projector, such as paper clips and paper scraps, do not attempt to retrieve any such object. Make sure to immediately turn off the power and ask professional technician to take it out.
3.The projector is not waterproof. To prevent the risk of short circuits, make sure that avoid water splashing and stay away from containers containing liquids. Do not operate the projector where it may be exposed to rain, water or excessive humidity.
4.Do not place the projector on the objects such as cloth or blankets, that may cause vents to be blocked.
5.Use the power cord or adapter with caution to avoid unduly bending. Damaged power cord may cause to electric shock.
6.After using, the power should be disconnected.
High Temperature Warning
The temperature near the ventilation opening will rise during and after the projection. Please don't touch it, otherwise it may cause burns.

Maintenance
1.Non-professional maintenance personnel are not allowed to disassemble the projector. If the projector is defective, please contact the professional technician or local distributor for after service.
2.Please use the specified power cord or adapter. If there is any damage, contact the supplier for replacement.
Cleaning
1.Unplug the power cord from the projector.
2.Regularly use the soft brush to clean the ventilation openings to prevent them from being blocked by dust accumulation. The projector will be overheated because of blocked dust.



| Media supported | | | |
|--|---------------|---|--|
| Media | File Ext | Codec | Remark |
| Video | .mpg | MPEG-1 MPEG-2 DivX Xvid MPEG-4 SP/ASP H.264 | Max Solution: 1920x1080 Max Data Rate: 40Mbps |
| | .ts | MPEG-2 H.264 | Max Solution: 1920x1080 Max Data Rate: 20Mbps |
| | .m2v /mkv | MPEG-4 SP/ASP H.264 | |
| | .dat | MPEG-1 | |
| Movie | .mp4 | MPEG-4 SP/ASP H.264 | Max Solution: 720x576 Max Data Rate: 40Mbps |
| | .wmv | MPEG-1 MPEG-2 | |
| | .mp3 | Mp3 | |
| | .wma | WMA | |
| Music | .m4a /aac | AAC | Sample Rate: 8k-48kHz Bit Rate: 32k-128kbps Channel: Mono/Stereo |
| | .jpg /jpeg | Progressive JPEG Baseline JPEG | Max Resolution: 1024x768 Max Resolution: 65536x5000 Depth: 1 / 4 / 8 / 16 / 24 / 32bpp |
| | .bmp | BMP | |
| | .png | Non-Interlaced Interlaced | |
| Photo | | | Max Resolution: 3000x3000 Max Resolution: 1500x1500 |
| File system: H1 Speed FS, FAT32, FAT16, NTFS/NTFS compressed file is not supported! Note: Licenses are required for DivX, MPEG, H.264, AAC, MP3, WMA and AAC. | | | |
| 7 | | | |



FCC Statement
This equipment has been tested and found to comply with the limits for a Class B digital device, pursuant to Part 15 of the FCC Rules.
These limits are designed to provide reasonable protection against harmful interference in a residential installation. This equipment generates uses and can radiate radio frequency energy and, if not installed and used in accordance with the instructions, may cause harmful interference to radio communications. However, there is no guarantee that interference will not occur in a particular installation. If this equipment does cause harmful interference to radio or television reception, which can be determined by turning the equipment off and on, the user is encouraged to try to correct the interference by one or more of the following measures:
-- Reorient or relocate the receiving antenna.
-- Increase the separation between the equipment and receiver.
-- Connect the equipment into an outlet on a circuit different from that to which the receiver is connected.
-- Consult the dealer or an experienced radio/TV technician for help.
This device complies with part 15 of the FCC Rules. Operation is subject to the following two conditions:(1) This device may not cause harmful interference, and (2) this device must accept any interference received, including interference that may cause undesired operation.
Any Changes or modifications not expressly approved by the party responsible for compliance could void the user's authority to operate the equipment.
This equipment complies with FCC radiation exposure limits set forth for an uncontrolled environment. This equipment should be installed and operated with minimum distance 20cm between the radiator & your body.

