

# User Manual

## WiFi Projector



Model: D40S

Pls read this manual carefully before using this product, and properly keep for future reference.

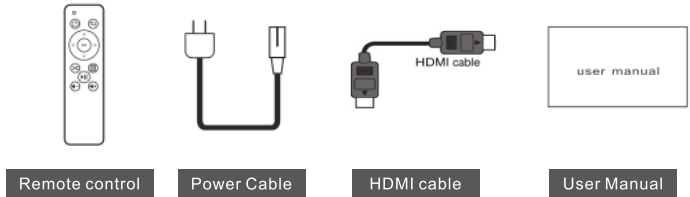
### Thanks for your choosing!

1. With this portable home theater projector, you can enjoy movies, videos, games, sports, pictures and more. As if you were watching a 150" dynamic image.
2. You can mirror your iPhone/ Android smart Phone to the projector, by WiFi or data cable.
3. The lifetime of LED light sources is up to 30000 hours.
4. LED projector is best for home video entertainment, it's better for you to enjoy videos in dark environment.

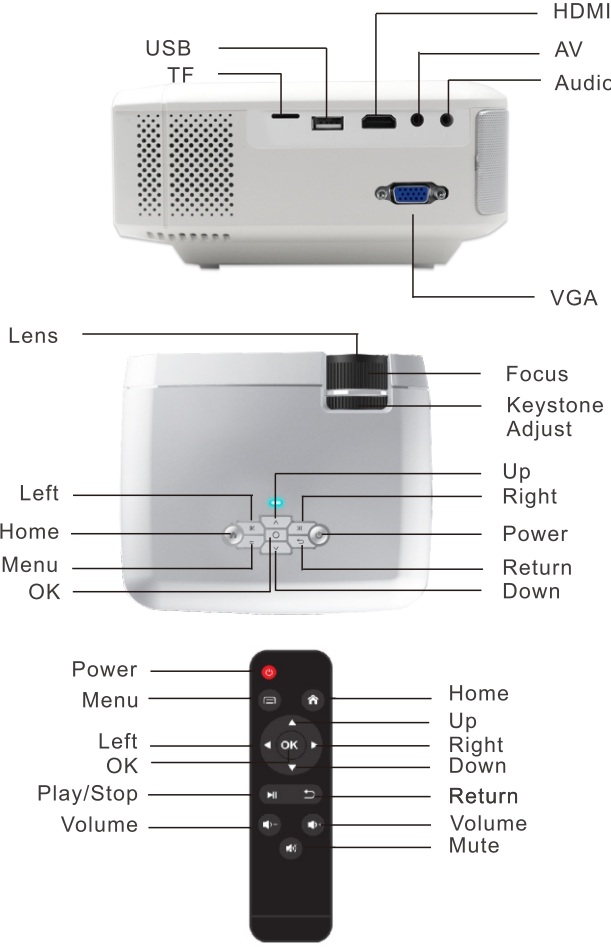
Not recommend the projector for word or excel. This is not suitable for using in the education domain, and the video playback is the main function.

### Standard accessories

Some of the accessories may vary by region.



### Projector view

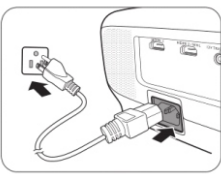


### Operation

#### 1.Starting up the projector

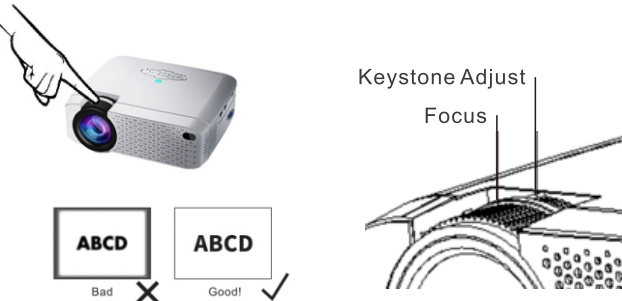
1. plug power cable into outlet . The POWER indicator light on the projector lights blue after power has been applied. Setting > Display>Projection> front projection

Please use the supplied power cable to avoid possible dangers such as electric shock and fire.



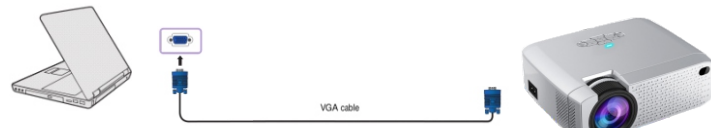
2. Press on the projector or on the remote control to start the projector, press 3 second as soon as the lamp lights up. The POWER indicator light flashes and stays blue when the projector is on. The fans start operating, and a start-up image is displayed on the screen while it warms up. The projector does not respond to further commands while it is warming up.

#### 2.Adjust the image



### Connecting PC(VGA)

Connect the projector to a computer with a VGA cable (not included). Laptop or desktop computer



### USB Media Play

Input the USB disc to the USB socket, and choose Media icon, and you can see the projector screen as below,

	File Type	Format
	Video	MPEG 1, MPEG-2, MPEG 4, DivX 3/4/5/6, H.264, RM/RMVB, Sorenson Spark, FLV, MOV, MKV, MPG, MP4, WMV
	Music	MP1, MP2, MP3, WMA etc Audio formats
	Photo	JPEG/BMP/PNG

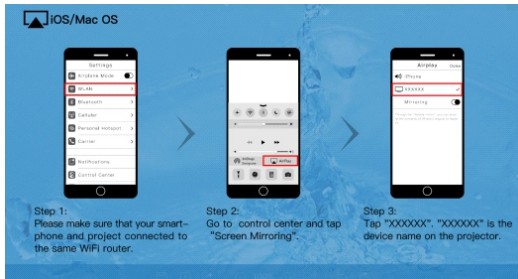
### Set Projector connect to WiFi

Click Setting --> Wireless Enter --> WIFI searching. Choose the WiFi name , input the Password from the soft keyboard, and click enter , then connect successfully. The WiFi name will show on the right-top of the main screen.



### iOS/Mac Mirror

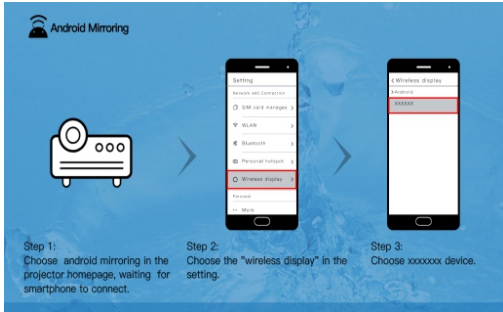
Choose iOS/Mac OS icon, you can see the projector screen as below,



- 1.Please connect your iPhone to the projector's SSID "Projector-\*\*\*\*\*" or set the iPhone and projector connected to the Same WiFi router.
2. Go to control center and tap "Screen Mirroring";
- 3.Tap "Projector-\*\*\*\*\*" . " Projector-\*\*\*\*\*" is the device name on the projector;
4. Then your iPhone mirror to the projector.

### Android Mirror

Choose Android Mirror icon, you can see the projector screen



### Connection

When connecting a signal source to the projector, be sure to:

1. Turn all equipment off before making any connections.
  2. Use the correct signal cables for each source.
  3. Make sure the cables are firmly inserted.
- In the connection illustrations shown below, some cables may not be included with the projector (see standard accessories). They are commercially available from electronics stores.

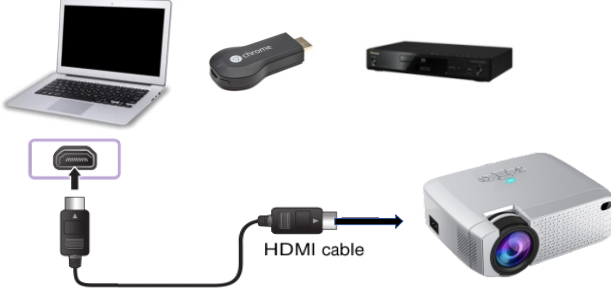
Connecting with video equipment

Terminal name	Terminal appearance	Function	Picture quality
HDMI		Connecting HDMI devices	● Best
PC (VGA)		Connecting a computer	● Better
USB		Connecting iPhone /Android Phone	● Best

### Connecting HDMI devices

HDMI (High-Definition Multimedia Interface) supports uncompressed video data transmission between compatible devices like Laptop, DTV tuners, DVD players, Blu-ray players and displays over a single cable. You should use an HDMI cable when making a connection between the projector and HDMI devices.

HDMI device: Laptop, DVD player, digital tuner, Chromecast, Fire TV etc



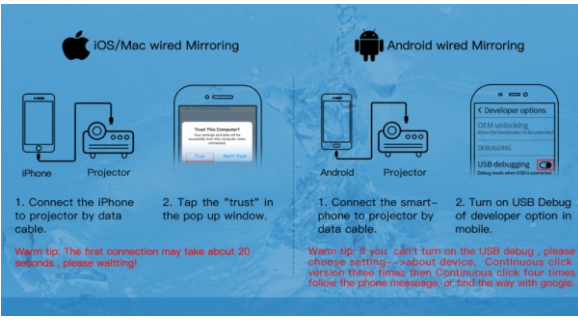
1. Choose android mirroring in the projector homepage waiting for smartphone to connect.
- 2.Choose the "wireless display" in the phone setting.
- 3.Choose projector-\*\*\*\*\* device.
- 4.Then your android phone mirror to projector.

Different brands of Android phones have different names for Miracast, include: Smart View, Multi-screen etc. Notice: You also can download the app "Miracast Shortcut" from Google play, which is a quick lunch for Miracast function

### USB mirroring

(for both iOS and Android Smartphones)

Choose USB Mirror icon, you can see the projector screen as



### USB Mirror for iOS device

1. Connect your iPhone to projector by data cable.
2. Tap the "trust" in the pop up window.
3. Wait a while, your iPhone will mirror to projector.

Note: The first connection may take about 20 seconds, please Waiting.



### USB Mirror for Android device

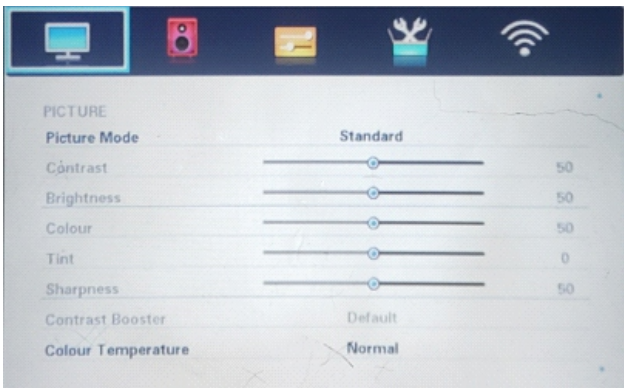
- 1, Connect the smart-phone to projector by data cable.
- 2, Enable the USB Debug of Developer option on your phone.
- 3, Then the phone mirrored to the projector.

Note: The sound of some android phone models can not



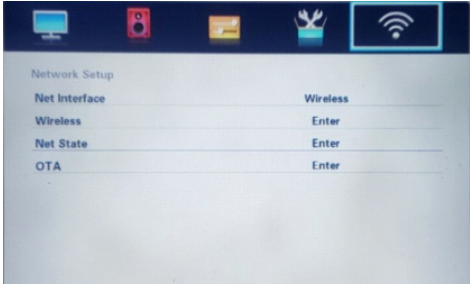
### Setting

1. Touch Menu icon from the control panel or remote control, and you can see the setting window, Picture, Sound, Preference, Setup, Network Setup
2. Choose right, left and OK to choose setting option.



### Network setup

- 1.Net interface Support Wireless.
- 2.Wireless Connect projector to router WiFi.
- 3.Net Stat The information of the WiFi connected.
- 4.OTA Update by online, system will search new firmware And upgrade.



### WARNING

1. Use this product only for intended use as described in this manual.
- 2.No peeking into the lens while projectors is working.
- 3.No cloth, or any other material that could stock ventilation holes of the projector.
- 4.No water-proof function for this projector ,no such apparatus as vase or cup should be put around the projector.
- 5.Projector should be stocked and used at dry and clean condition.
- 6.Please turn off the projector and cut off the power supply, if it is not used for along time.
7. Please use factory original foam and other shockproof material while transporting.
- 8.If projector defected, do not attempt to repair it by yourself. Please contact with your distributor or factory directly.
9. To avoid risk of electronic shock, do not disassemble or repair the device. Incorrect repair may cause risk of electronic shock or injury to people during operating.

Thanks for reading!

Enjoy your time with this projector !

Customer Service Email:  
Support@PTVdisplay.com



This device complies with Part 15 of the FCC Rules. Operation is subject to the following two conditions: (1) this device may not cause harmful interference, and (2) this device must accept any interference received, including interference that may cause undesired operation

NOTE: This equipment has been tested and found to comply with the limits for a Class B digital device, pursuant to Part 15 of the FCC Rules. These limits are designed to provide reasonable protection against harmful interference in a residential installation. This equipment generates, uses and can radiate radio frequency energy and, if not installed and used in accordance with the instructions, may cause harmful interference to radio communications. However, there is no guarantee that interference will not occur in a particular installation.

If this equipment does cause harmful interference to radio or television reception, which can be determined by turning the equipment off and on, the user is encouraged to try to correct the interference by one or more of the following measures:

- Reorient or relocate the receiving antenna.
- Increase the separation between the equipment and receiver.
- Connect the equipment into an outlet on a circuit different from that to which the receiver is connected.
- Consult the dealer or an experienced radio/TV technician for help.

Warning: changes or modifications not expressly approved by the party responsible for compliance could void the user's authority to operate the equipment

The distance between user and products should be no less than 20cm