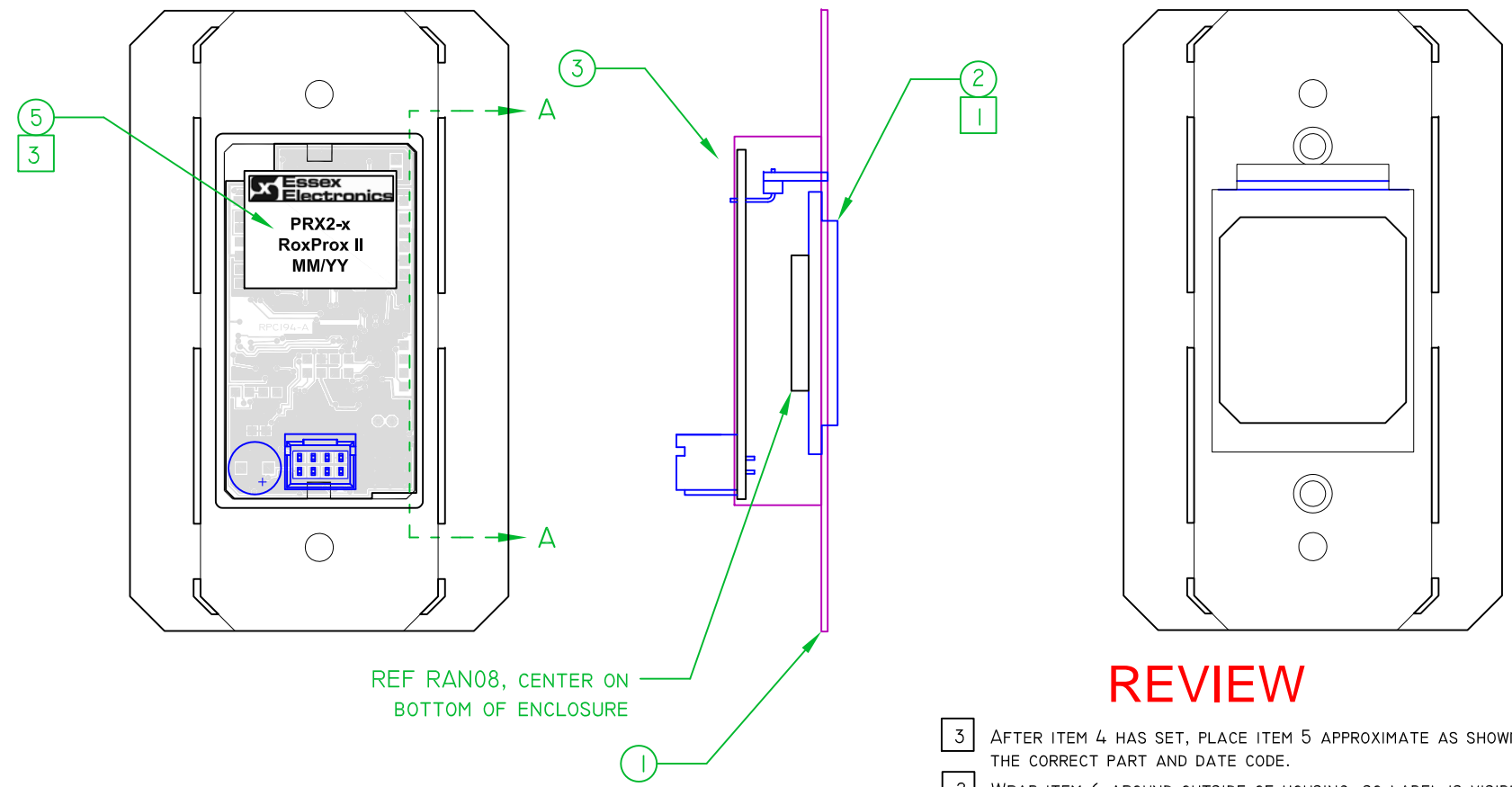


REVISIONS				
ZONE	REV	DESCRIPTION	DATE	APPROVED
	A	INITIAL RELEASE	10-OCT-2017	SMP

SECTION "A - A"



REVIEW

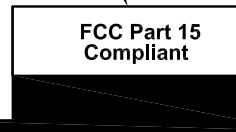
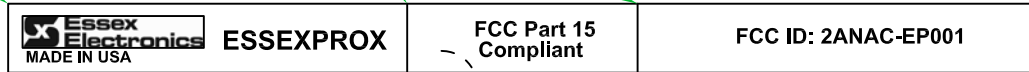
- 3 AFTER ITEM 4 HAS SET, PLACE ITEM 5 APPROXIMATE AS SHOWN, WITH THE CORRECT PART AND DATE CODE.
- 2 WRAP ITEM 6 AROUND OUTSIDE OF HOUSING, SO LABEL IS VISIBLE, SEE SHEET 2.
- 1 INSERT ITEM 2 ONTO ITEM 1, PEELING AWAY ANY PROTECTIVE FILM.

1	RHSI9		I		HOUSING, ENCLOSURE, DUAL USE
2	MLN07		I		LENS, PRX2, GLOBE LOGO
3	MCA5I9		I		PRX2E CIRCUIT BOARD ASSEMBLY
4	RPTII		AR		POTTING, E-CAST F-82 CLEAR RESIN WITH I19 HARDENER
5	MLBL-ROXPROXII		I		1) PRX2-xx 2) RoxPROX II 3) DATE
6	RLB69		I		LABEL ESSEX PROX ELECTRONICS
ITEM NO	STOCK NUMBER	MHS39	REF DES	NOMENCLATURE OR DESCRIPTION	
	QTY REQD				

Drawn by: S. PETREE	Date: 28-MAR-2017		
PRX2 HOUSING CIRCUIT ASSEMBLY			
SIZE A	FSCM NO.	DWG NO. MHS39	REV A
Used On: PRX2-xx	SCALE 5:4	MHS39-A.DWG	SHEET 1 OF 2

6
2

FOLD



REVIEW

SIZE	FSCM NO.	DWG NO.	REV
A		MHS39	A
SCALE	5:4	MHS39-A.DWG	SHEET 2 OF 2

PRINTED ON: 18-OCT-2017