

# YXK MINI PC Hardware Reference

This book provides basic hardware information for this model of MINI PC

**May 2024**

Input Rating: 100-240V~, 1.2A, 50/60Hz

Output Rating: 12Vdc, 3.0A

The Power Management feature enables the computer to enter a low-power (or "sleep") mode after a period of inactivity. When used with an external monitor that is ENERGY STAR-qualified, this feature also supports the similar power management features of the external monitor.

## Copyright and Trademark notices

YXK logo are trademarks of Centerm Information Co., Ltd. in the PRC and other countries.

Microsoft, Windows, and Windows NT are U.S. registered trademarks of Microsoft Corporation.

Intel, Pentium, Intel Inside, and Celeron are trademarks of Intel Corporation in the PRC and other countries.

Ericom® and all Ericom products for RDP, terminal emulation and VDI are trademarks of Ericom in PRC and other countries.




AMD® is the registered trademark of AMD Co., Ltd in PRC and other countries.

VIA® is the registered trademark of VIA Co., Ltd in PRC and other countries.

All other product names mentioned herein may be trademarks of their respective companies.

Information in this document is subject to change without notice and does not represent a commitment on the part of the manufacturer. No part of this guide may be reproduced or transmitted in any form or means, electronic or mechanical, including photocopying and recording, for any purpose, without the express written permission of the manufacturer.

Every effort has been made to make this guide as complete and as accurate as possible, but no warranty or fitness is implied. The authors and the publisher shall have neither responsibility nor liability to any person or entity with respect to loss or damages arising from the use of information contained in this guide. This disclaimer does not apply in countries where such provisions are inconsistent with local law.

	<b>WARNING:</b> Text set off in this manner indicates that failure to follow directions could result in bodily harm or loss of life.
	<b>CAUTION:</b> Text set off in this manner indicates that failure to follow directions could result in damage to equipment or loss of information.
	<b>CAUTION:</b> Risk of explosion if battery is replaced by an incorrect type. dispose of used batteries according to the instructions.

ALL RIGHTS RESERVED.

All Trademarks are acknowledged.

## Table of Contents

<b>OPEN-CASE INSPECTION.....</b>	<b>5</b>
<b>STANDARD MINI PC FEATURES.....</b>	<b>6</b>
<b>MINI PC INFORMATION.....</b>	<b>7</b>
PRODUCT FEATURE OVERVIEW.....	7
Product Specification.....	8
User Guide.....	8
PREVENTING ELECTROSTATIC DAMAGE.....	9
GROUNDING METHOD.....	9
<b>ROUTINE MINI PC CARE AND SERVICE INFORMATION.....</b>	<b>10</b>
ROUTINE MINI PC CARE.....	10
BEFORE SHIPPING.....	11
IMPORTANT SERVICE REPAIR INFORMATION.....	13
<b>COMMON FAULTS AND TROUBLE SHOOTING.....</b>	<b>14</b>

## IMPORTANT Safety Information



To reduce the risk of serious injury, Please read this Reference carefully. The guide contains important information that can protect you, your work, and your system. This guide is located on the *MINI PC Documentation* that is included with the product

To reduce the risk of electric shock or damage to your equipment:

- Do not disable the power cord grounding plug. The grounding plug is an important safety feature
- Plug the power cord in a grounded (earthed) outlet that is easily accessible at all times.
- Disconnect power from the MINI PC by unplugging the power cord from the electrical outlet.

This equipment has been tested and found to comply with the limits for a Class B digital device.

## Open-case inspection

Thank you for purchasing the Centerm S15 Ultra Desktop MINI PC. This guide contains information to setup and use the hardware of Centerm S15 Ultra.

Unpack the unit taking care not to drop the product whilst removing from the packaging.

The carton in which the product was shipped to you contains the following:

Item	Amount
MINI PC	1
Power cord	1
External Power supply	1

When you open the carton, if you find any discrepancy between the contents of the carton and the above list, contact the dealer or reseller from whom you have purchased the product, immediately.

**NOTE: PLEASE RETAIN THE ORIGINAL CARTON AND PACKING MATERIAL. THEY WOULD BE REQUIRED TO AVOID DAMAGE DURING TRANSIT (IF REQUIRED IN FUTURE).**

## STANDARD MINI PC FEATURES

The Centerm MINI PC are terminals that connect over a network to a server running Microsoft Windows XPE or Windows NT Terminal Server Edition or either of these operating systems with Citrix MetaFrame software running atop the server operating system.

Centerm CTMS (Centerm terminal management software) equipped to manage Centerm MINI PC. Centerm CTMS is a leading-edge tool to help with quick deployment and for on-going management of the MINI PC in your organization. Each Centerm MINI PC is recognized by Centerm CTMS as a supported device. As a result, customers need not track license compliancy for each device.

The next sections describe the features of the MINI PC. For a complete list of the hardware and software installed on a specific model, visit:

<https://www.centerm.com/english>

and search for a specific MINI PC model. The following features are common to all Centerm MINI PC:

- no moving parts
- no hard drives or diskette drives
- 15-minute setup time
- while software support is limited to 90 days from date of purchase, free periodic firmware upgrades during the product's warranty period help to protect your IT investment
- central deployment and management using the Centerm Terminal Management Software.

## MINI PC INFORMATION

The product model of this series:S15 Ultra

### ***PRODUCT FEATURE OVERVIEW***

- Lower Power Consumption Optimized Performance
- Build-in Standard 1000Mbps network adapters
- Higher stability, lower bandwidth occupation
- Easier, centralized management for lower TCO
- Support both Local and Network booting
- Powerful stateless computing and fast switching function
- Powerful local and network security mechanism
- Powerful local web browser and media player
- Support centralized network management
- Support server farm load balancing

For more detail product information, please visit us at:

<https://www.centerm.com/>

The technical specification is listed below. Please refer to the relevant model for relative product information.

**NOTICE: ALL THE PHOTOGRAPHS ARE FOR REFERENCE ONLY, AND THE ACTUAL PRODUCTS MAY VARY FROM THE PHOTOGRAPHS.**

## Product Specification

Product Model	S15 Ultra
Hardware Platform	Alder lake-N
Memory	\
Storage	\
Network Adapter	RTL8111H
Network Interface	1
USB Port	3*USB 2.0+2*USB 3.0+1*Type C
Audio Interface	1*1/8-inch min LINE-OUT, 1*1/8-inch min MIC-IN
Operating System	Win 10
Protocol and Application	Microsoft RDP, Citrix ICA, TCP/IP, PPP, DHCP, DNS, Telnet/SSH , XDMCP resident
Display	DP:4096x2160@60Hz HDMI:4096x2160@60Hz
Printing	Network Printing
Voltage	External Worldwide auto-sense12VDC 3.0A
Power Consumption	<36W
Working Condition	Temperature: 0℃ —40℃; Humidity: 30% —90%
Volume (mm)	131 (Length) *76 (Width) *178 (Height)
Weight(KG)	0.56

NOTICE: THERE WILL BE SLIGHTLY SOFTWARE DIFFERENCE BETWEEN DIFFERENT MODEL,  
PLEASE REFER TO THE REAL OBJECT.

## ***PREVENTING ELECTROSTATIC DAMAGE***

TO PREVENT ELECTROSTATIC DAMAGE, OBSERVE THE FOLLOWING PRECAUTIONS:

- Avoid hand contact by transporting and storing products in static-safe containers.
- Keep electrostatic-sensitive parts in their containers until they arrive at static-free workstations.
- Place parts on a grounded surface before removing them from their containers.
- Avoid touching pins, leads, or circuitry.
- Always be properly grounded when touching a static-sensitive component or assembly.

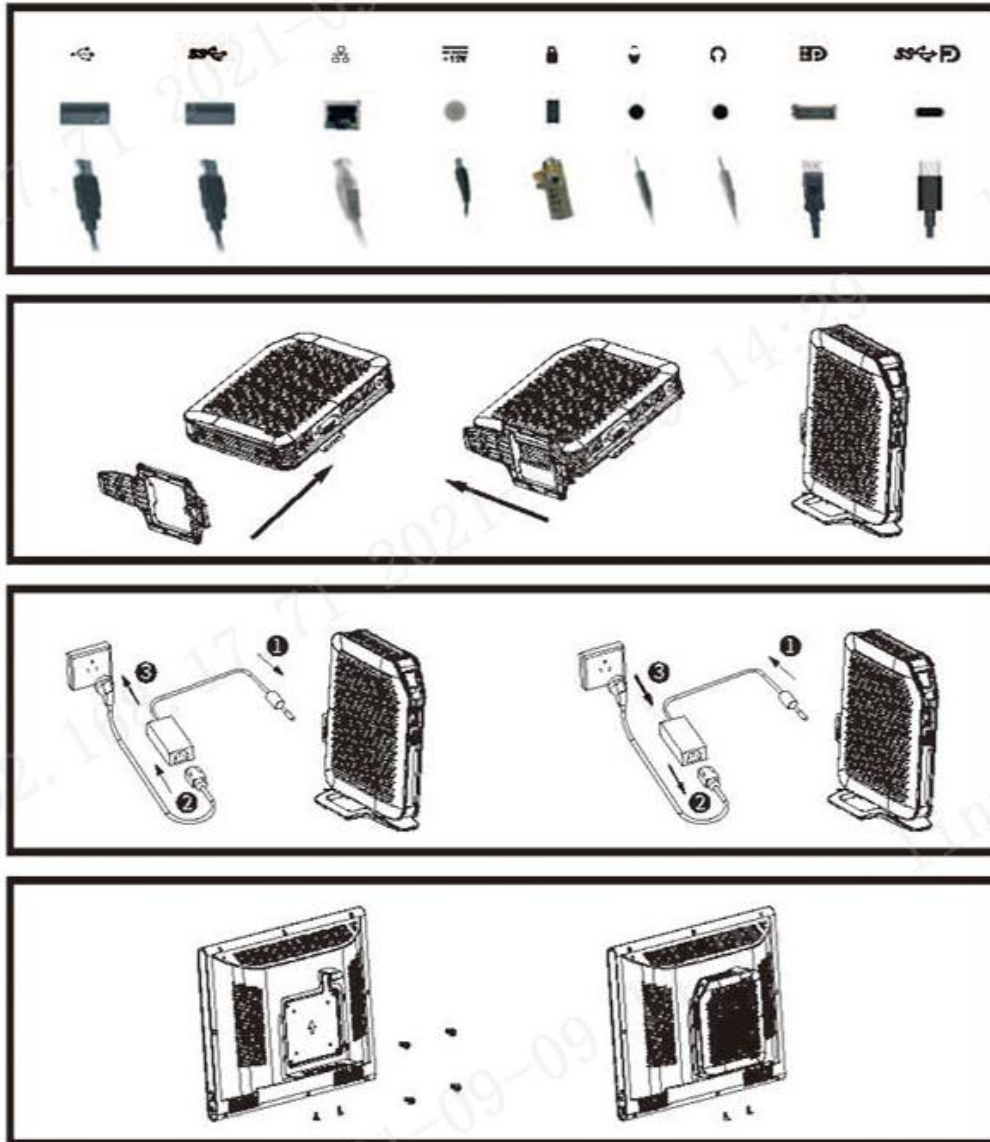
## ***GROUNDING METHOD***

THERE ARE SEVERAL METHODS FOR GROUNDING. USE ONE OR MORE OF THE FOLLOWING METHODS WHEN HANDLING OR INSTALLING ELECTROSTATIC-SENSITIVE PARTS:

- Use a wrist strap connected by a ground cord to a grounded MINI PC chassis. Wrist straps are flexible straps with a minimum of 1 megohm +/- 10 percent resistance in the ground cords. To provide proper grounding, wear the strap snug against the skin.
- Use heel straps, toe straps, or bootstraps at standing workstations. Wear the straps on both feet when standing on conductive floors or dissipating floor mats.
- Use conductive field service tools.
- Use a portable field service kit with a folding static-dissipating work mat.

## User Guide

### 产品连接



ADISCHARGE OF STATIC ELECTRICITY FROM A FINGER OR OTHER CONDUCTOR MAY DAMAGE SYSTEM BOARDS OR OTHER STATIC-SENSITIVE DEVICES. THIS TYPE OF DAMAGE MAY REDUCE THE LIFE EXPECTANCY OF THE DEVICE.

NOTE: The product can only be placed as above.

## ROUTINE MINI PC CARE AND SERVICE INFORMATION

### ROUTINE MINI PC CARE

FOLLOW THESE SUGGESTIONS TO TAKE CARE OF THE MINI PC:

- Operate the MINI PC on a sturdy, level surface. Leave a 3-inch (7.6-cm) clearance around the air vents to permit the required airflow.
- never operate the MINI PC with the outside panel removed.
- never restrict the airflow into the MINI PC by blocking the vents or air intake.
- keep the MINI PC away from excessive moisture, direct sunlight, and extremes of heat and cold. For information about the recommended temperature and humidity ranges for the MINI PC, see appendix a, “specifications” in this guide.
- keep liquids away from the MINI PC and keyboard.
- turn off the MINI PC before you do either of the following:
  - wipe the exterior of the MINI PC with a soft, damp cloth as needed. Using cleaning products may discolor or damage the finish.
  - occasionally clean the air vents of the MINI PC. Lint and other foreign matter can block the vents and limit the airflow.

## ***BEFORE SHIPPING***

FOLLOW THESE SUGGESTIONS WHEN PREPARING TO SHIP THE MINI PC:

1. turn off the MINI PC and external devices.
2. disconnect the power cord from the electrical outlet, then from the MINI PC.
3. disconnect the system components and external devices from their power sources, then from the MINI PC.
4. pack the system components and external devices in their original packing boxes or similar packaging with sufficient packing material to protect them.

## ***ENERGY STAR***



This product qualifies for energy star in the “factory default” setting and this is the setting in which power savings will be achieved. changing the factory default settings or enabling other features will increase power consumption that could exceed the limits necessary to

qualify for energy star rating.

We want to help you save energy.

## Factory default

MODE	Time(minutes)
Sleep Mode	15
Close Display	10

## Setting

Please set up the system parameter;

Open the "Control Panel"->"Power Options"->"Sleep Mode";Modified for 15 minutes

Open the "Control Panel"->"Power Options"->"Close Display";Modified for 10 minutes

## Wake up

By clicking the mouse or keyboard can wake up the computer

## Remark:

the speed of any active 1 Gb/s Ethernet network links are reduced to zero when transitioning to Sleep or Off Mode

## ***IMPORTANT SERVICE REPAIR INFORMATION***

IN ALL CASES, REMOVE AND SAFEGUARD ALL EXTERNAL OPTIONS BEFORE RETURNING THE MINI PC TO CENTERM FOR REPAIR OR EXCHANGE.

IN COUNTRIES THAT SUPPORT CUSTOMER MAIL-IN REPAIR BY RETURNING THE SAME UNIT TO THE CUSTOMER, CENTERM MAKES EVERY EFFORT TO RETURN THE REPAIRED CENTERM WITH THE SAME INTERNAL MEMORY AND FLASH MODULES THAT WERE SENT.

IN COUNTRIES THAT DO NOT SUPPORT CUSTOMER MAIL-IN REPAIR BY RETURNING THE SAME UNIT TO THE CUSTOMER, ALL INTERNAL OPTIONS SHOULD BE REMOVED AND SAFEGUARDED IN ADDITION TO THE EXTERNAL OPTIONS. THE MINI PC SHOULD BE RESTORED TO THE ORIGINAL CONFIGURATION BEFORE RETURNING IT TO CENTERM FOR REPAIR.

This equipment complies with the radiation exposure limits set forth for an uncontrolled environment. This equipment should be installed and operated with minimum distance of 20 cm between the radiator and your body.

Hereby, Fujian Centerm Information Co.,Ltd. declare that MINI PC with model S15 Ultra supports BT, WIFI functions. It is in conformity with the relevant union harmonization legislation: Radio Equipment Directive: 2014/53/EU.

The full text of the EU declaration of conformity is available at the following internet address: <https://www.centerm.com/>.

Bluetooth EIRP

BT: 16.38dBm

BLE: 11.46dBm

WIFI EIRP:

802.11b/g/n/ax: 20.29dBm

802.11a/n/ac/ax:

5150-5250MHz: 23.06dBm

5250-5350MHz: 23.07dBm

5470-5725MHz: 23.11dBm

5725-5850MHz: 14.00dBm

Any Changes or modifications not expressly approved by the party responsible for compliance could void the user's authority to operate the equipment.

This device complies with Part 15 of the FCC Rules. Operation is subject to the following two conditions:

- (1) this device may not cause harmful interference, and
- (2) this device must accept any interference received, including interference that may cause undesired operation.

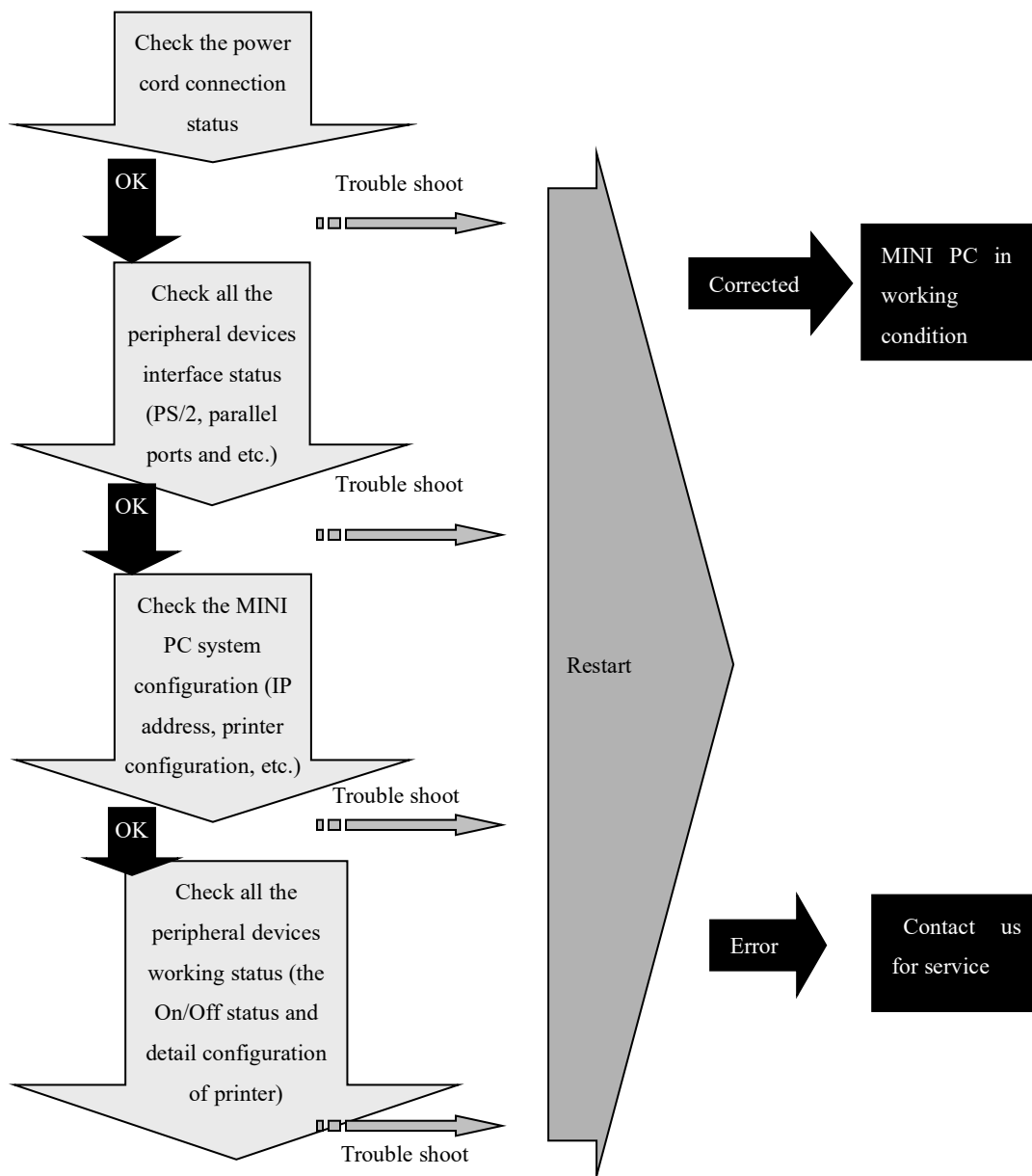
Note: This equipment has been tested and found to comply with the limits for a Class B digital device, pursuant to part 15 of the FCC Rules. These limits are designed to provide reasonable protection against harmful interference in a residential installation. This equipment generates uses and can radiate radio frequency energy and, if not installed and used in accordance with the instructions, may cause harmful interference to radio communications. However, there is no guarantee that interference will not occur in a particular installation. If this equipment does cause harmful interference to radio or television reception, which can be determined by turning the equipment off and on, the user is encouraged to try to correct the interference by one or more of the following measures:

-Reorient or relocate the receiving antenna.

-Increase

## COMMON FAULTS AND TROUBLE SHOOTING

For basic problem trouble shooting, follow the following flow to verify the problem and follow the below suggestions to trouble shoot the common faults.



Common Faults	Troubleshooting
Unable to turn MINI PC device	Please check whether power cord is connected correctly.
MINI PC reboot unprovoked	Please check whether the voltage in your working place is stable.
Monitor works abnormally	<ol style="list-style-type: none"> <li>1. Please check whether the power cord and signal cable is connected correctly.</li> <li>2. Please keep the monitor away from any magnetic device to avoid the interference.</li> <li>3. If your configure the system incorrectly and causes the black screen, please restart the MINI PC and holding the "Ctrl" Key to enter the Bios menu, then holding the "Ctrl+u"Key enter the Boot Menu and select the "Restore Configuration" to enter the default system.</li> </ol>
Keyboard works abnormally	Please check whether the keyboard is connected correctly with MINI PC.
Network connect unstable	<ol style="list-style-type: none"> <li>1. Please check whether all network devices (Network Cable, Hub, switch and etc.) that you are using are work correctly</li> <li>2. Please check whether the network interface is connected to the network correctly.</li> </ol>
If you cannot troubleshoot the foregoing mentioned faults, please locate your nearest Centerm support location.	