

## Smart Power Strip , Switch

Series Model:  
ZLD-34USA4A-W  
ZLD-44USA4A-W ,ZLD-44USA6A-W  
ZLD-64USA4A-W ,ZLD-64USA6A-W

### Thank you.

Thank you for purchasing the ZLD-34USA-W USB outlet & surge protector . We are dedicated to providing our customers with quality products for building a better living. We hope you enjoy your new product!

### Package contents

1xSmart Power Strip  
1xUser manual

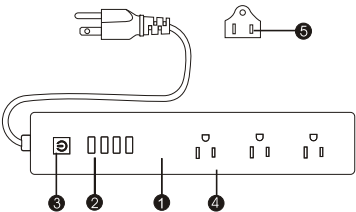
### Safety Information

IMPORTANT: Please read and comply with all of the instructions and warnings provided in this manual before using the product. Failure to comply with the instructions and warning provided herein may result in inaccurate results and/or damage to the product itself.

**WARNING: DO NOT** connect a device that exceeds the power ratings for this surge protector. Doing so may overheat or cause possible damage to the surge protector or other equipment.  
**DO NOT** use the surge protector if the cord is damaged in any way, shape, or form. Doing so may cause electric shock and possible injury. Extension cords can be used with this device; check to make sure that the extension cord can handle the voltage of the surge protector.  
**DO NOT** use the surge protector if it is damaged in any way, shape, or form.  
**DO NOT** attempt to repair, disassemble or modify this device under any circumstances. Doing so may damage the device or cause electric shock and possible injury.  
**DO NOT** place the surge protector near any heat source or in direct sunlight.  
**DO NOT** place or operate the surge protector in high-humidity environments.  
**DO NOT** operate the surge protector if there is a strange odor or heat emitting from the surge protector or a connected device, contact customer support immediately.  
**DO NOT** touch any electrical appliances with wet hands or handle appliances near liquids.  
Avoid using excessive force when handling the surge protector. Keep the surge protector dry and clean at all times.  
**DO NOT** use any solvents or cleaning solutions on the surge protector. Clean only with a soft, dry cloth.  
Never overload electrical circuits as it may cause an electrical shock or fire.

### Function Diagram

- 1.Smart Power Strip
- 2.USB ports
- 3.Electrical outlets
- 4.Power button
- 5.Plug

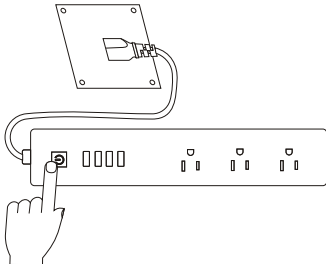


### Set-up

**WARNING:**DO NOT connect a device that exceeds the power ratings for this Power Strip. Doing so may overheat or cause possible damage to the Smart Power Strip or other equipment.

Plug the Smart Power Strip into a powered wall socket and press the power button to turn on the Power Strip. Connect your desired electrical devices to the Power Strip, making sure to not overload the input current(15A).

**Note:** Each USB port provides a maximum output current of 2.4A. The Power Strip, with all ports combined, provides a maximum output current of 4A.



### Troubleshooting

Problem	Cause	Solution
My device(s) will not charge or turn on.	Power Strip is off	Check to make sure the power button on the Power Strip is illuminated.
	USB cable is not properly connected	Check your USB cables to ensure that they're properly connected by gently pushing each connection inward.
	USB be defective.	Test charging cable with another power adapter to ensure if the cable is functional.

Problem	Cause	Solution
Strange odor or heat emitting from the Power Strip.	Product may be broken or defective.	Immediately unplug the Power Strip and discontinue use. Contact customer service.
	Surge protector does not turn on.	Built-in surge protection may have been used to protect your connected devices.  Product may be broken or defective.

### Specifications

Power Supply	AC 100V-240V (50/ 60 Hz)
Max Power	1875W (125V / 15A)
Max Energy Dissipation	5610 Joules
DC Output	DC 5V / 4A max totally
Ports	4USB / 3 AC Outlets
Operation Temperature	-22°F~129°F (-30°C~65°C)
Storage Temperature	-22°F~140°F (-30°C~60°C)
Date of Purchase	
Place of Purchase	
Order Number	

Warranty  
TERMS & POLICY

We warrants all products to be of the highest quality in material, craftsmanship and service for a minimum of 1 year, effective from the date of purchase. Warranty lengths may vary between product categories. We will replace any product found to be defective due to manufacturer flaws based on eligibility; refunds are available within the first 30 days of purchase. This warranty extends only to personal use and does not extend to any product that has been used for commercial, rental, or any other use in which the product is not intended for. There are no warranties other than the warranties expressly set forth with each product. This warranty is non-transferrable. We are not responsible in any way for any damages, losses or inconveniences caused by equipment failure or by user negligence, abuse, or use noncompliant with the user manual or any additional safety, use, or warnings included in the product packing and manual.

This warranty does not apply to the following.  
Damage due to abuse, accident, alteration, misuse, tampering or vandalism.  
Improper or inadequate maintenance.  
Damage in return transit.  
Unsupervised use by children under 18 years of age.

**ALL EXPRESSED AND IMPLIED WARRANTY, INCLUDING THE WARRANTY OF MERCHANTABILITY, ARE LIMITED TO THE PERIOD OF THE LIMITED WARRANTY.**

WiFi Smart Devices Manual

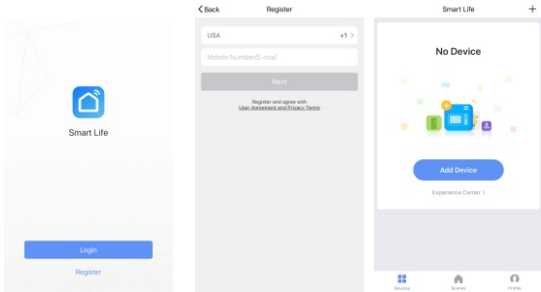
Works with Alexa  
Simplified steps to install App on your smart device and pair with Amazon Alexa and Google Assistant using Smart Life App on Apple Store/Google Play Store

Works with Amazon Alexa. Compatible with any smart phone or tablet including Android devices and Apple.

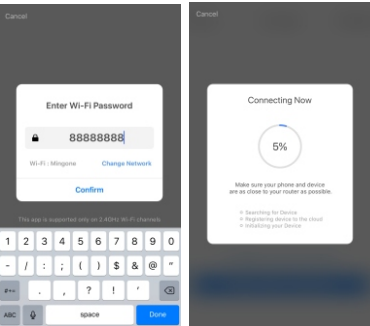
Download or scan the QR code and install the Smart Life App for either iOS or Android.  
Once downloaded or scan the QR code, the app will ask you to register your device. Enter your phone number or email whichever one makes you feel comfortable and select the country you live in. If phone number selected you will receive a text with a registration code. If you choose email you will then create a password.



Input the registration Code you receive via text if phone method used or create password if email method chosen.

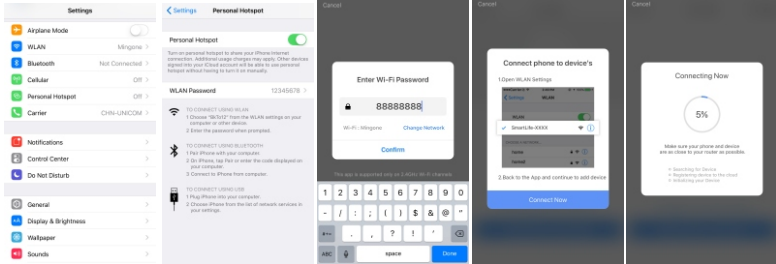


- Adding a New Device in Quick Connection
- \*Make sure the Wi-Fi smart device is standby (the green light button flash in 2 times per second if the smart device is plug or switch) after plug in the socket.
  - Otherwise, you should press the power button keep to 6 seconds to reset the device
  - The smart Wi-Fi devices only support 2.4GHz Wi-Fi router.
  - \*Open app and click "+" to add device
  - \*Select Wi-Fi network, input Wi-Fi password, connect and click.
  - \*Once connected the app will prompt the connection- click OK



- Adding a New Device in AP Mode
- \*Make sure the Wi-Fi device is standby (the green light of Wi-Fi device flashes 1 time in 2 seconds) after plug in the socket.
  - \*Press "+" in the main menu of app
  - \*Click "AP Mode" and press Next Step in Add Device
  - \*Select Wi-Fi and input Wi-Fi password, press Next in Set up Wi-Fi for device
  - \*Press Connect now
  - \*Go to WLAN setting in your smart phone and select the "Smart Life" for your WiFi, no need to input password once you select the "Smart Life" (you can directly to connect it if your OS is Android)
  - \*Go back to app and press "Connect" Device name is "Smart Life"
  - \*Confirm Device

Once App is installed on your device and you have added your smart device to your app you will be able to control it.



**FCC Statement**

This equipment has been tested and found to comply with the limits for a Class B digital device, pursuant to part 15 of the FCC rules. These limits are designed to provide reasonable protection against harmful interference in a residential installation. This equipment generates, uses and can radiate radio frequency energy and, if not installed and used in accordance with the instructions, may cause harmful interference to radio communications. However, there is no guarantee that interference will not occur in a particular installation. If this equipment does cause harmful interference to radio or television reception, which can be determined by turning the equipment off and on, the user is encouraged to try to correct the interference by one or more of the following measures:

- Reorient or relocate the receiving antenna.
- Increase the separation between the equipment and receiver.
- Connect the equipment into an outlet on a circuit different from that to which the receiver is connected.
- Consult the dealer or an experienced radio/TV technician for help.

To assure continued compliance, any changes or modifications not expressly approved by the party.

Responsible for compliance could void the user's authority to operate this equipment. (Example- use only shielded interface cables when connecting to computer or peripheral devices).

This equipment complies with Part 15 of the FCC Rules. Operation is subject to the following two conditions:

- (1) This device may not cause harmful interference, and
- (2) This device must accept any interference received, including interference that may cause undesired operation.

**FCC Radiation Exposure Statement:**

The equipment complies with FCC Radiation exposure limits set forth for uncontrolled environment. This equipment should be installed and operated with minimum distance 20cm between the radiator and your body.

.