



Shenzhen Huaxia Testing Technology Co., Ltd

1F., Block A of Tongsheng Technology Building, Huahui Road, Dalang Street, Longhua District, Shenzhen, China

Telephone: +86-755-26648640

Fax: +86-755-26648637

Website: www.cqa-cert.com

Report Template Version: V04

Report Template Revision Date: 2018-07-06

TEST REPORT

Report No. : CQASZ20190800831E-02
Applicant: Shenzhen Times Innovation Technology Co., Ltd
Address of Applicant: Room 3, 6/F, Building 3, WINLEAD, Fada Road, Bantian Street, Longgang District, Shenzhen, China.
Equipment Under Test (EUT):
EUT Name: Baseus Immersive Virtual 3D Wireless Receiver
All Model No.: Baseus BA03, BA03
Test Model No.: Baseus BA03
Brand Name: Baseus
FCC ID: 2AN7Y-BA03
Standards: 47 CFR Part 15, Subpart C
Date of Receipt: 2019-09-02
Date of Test: 2019-09-02 to 2019-09-06
Date of Issue: 2019-09-06
Test Result : **PASS***

*In the configuration tested, the EUT complied with the standards specified above

Tested By:

Tom Chen

(Tom chen)

Reviewed By:

Sheek Luo

(Sheek Luo)

Approved By:

Jack Ai

(Jack Ai)



The test report is effective only with both signature and specialized stamp, The result(s) shown in this report refer only to the sample(s) tested. Without written approval of CQA, this report can't be reproduced except in full.

1 Version

Revision History Of Report

Report No.	Version	Description	Issue Date
CQASZ20190800831E-02	Rev.01	Initial report	2019-09-06

2 Contents

	Page
1 COVER PAGE	1
1 VERSION.....	2
2 CONTENTS.....	3
3 TEST SUMMARY.....	4
4 GENERAL INFORMATION.....	5
4.1 CLIENT INFORMATION.....	5
4.2 GENERAL DESCRIPTION OF E.U.T.....	5
4.3 TEST ENVIRONMENT & TEST MODE.....	6
4.4 DESCRIPTION OF SUPPORT UNITS.....	6
4.5 STATEMENT OF THE MEASUREMENT UNCERTAINTY.....	7
4.6 TEST LOCATION.....	8
4.7 TEST FACILITY.....	8
4.8 EQUIPMENT LIST.....	9
5 TEST RESULT AND MEASUREMENT DATA.....	10
5.1 ANTENNA REQUIRMENT.....	10
5.2 ELECTRIC FIELD STRENGTH OF FUNDAMENTAL AND OUTSIDE THE ALLOCATED BANDS.....	11
5.3 RADIATED EMISSIONS.....	14
5.4 FREQUENCY STABILITY.....	20
5.5 20DB OCCUPIED BANDWIDTH.....	22
6 PHOTOGRAPHS - EUT TEST SETUP.....	24
6.1 RADIATED EMISSION.....	24
7 PHOTOGRAPHS - EUT CONSTRUCTION DETAILS.....	25

3 Test Summary

Test Item	FCC Test Requirement	Test Method	Result
Antenna Requirement	47 CFR Part 15, Subpart C Section 15.203	ANSI C63.10 2013	Pass
Conducted Emission (150KHz to 30MHz)	47 CFR Part 15, Subpart C Section 15.207	ANSI C63.10 2013	N/A
Electric Field Strength of Fundamental and Outside the Allocated bands	47 CFR Part 15, Subpart C Section 15.225(a)/(b)/(c)	ANSI C63.10 2013	Pass
Radiated Emission	47 CFR Part 15, Subpart C Section 15.225(d)/15.209	ANSI C63.10 2013	Pass
Frequency Tolerance	47 CFR Part 15, Subpart C Section 15.225(e)	ANSI C63.10 2013	Pass
20dB Occupied Bandwidth	47 CFR Part 15, Subpart C Section 15.215	ANSI C63.10 2013	Pass

N/A: When the EUT charging, NFC will not work , So Not Applicable

Model No.: Baseus BA03, BA03

Only the model Baseus BA03 was tested, since the electrical circuit design, layout, components used and internal wiring were identical for the above models, with difference being color/Model name.

4 General Information

4.1 Client Information

Applicant:	Shenzhen Times Innovation Technology Co., Ltd
Address of Applicant:	Room 3, 6/F, Building 3, WINLEAD, Fada Road, Bantian Street, Longgang District, Shenzhen, China.
Manufacturer:	SHENZHEN KINGREE ELECTRONIC CO., LTD
Address of Manufacturer:	Floor 3, Bohua Technology Park, Shangkeng Community, Guanlan Street, Longhua New District, Shenzhen, Guangdong, China.

4.2 General Description of E.U.T.

Product Name:	Baseus Immersive Virtual 3D Wireless Receiver
All Model No.:	Baseus BA03, BA03
Test Model No.:	Baseus BA03
Trade Mark:	Baseus
Hardware Version:	Baseus_BA03 V2.1
Software Version:	3008_i2s_190806
Operation Frequency:	13.56MHz
Modulation Type:	ASK
Product Type:	<input type="checkbox"/> Mobile <input checked="" type="checkbox"/> Portable <input type="checkbox"/> Fix Location
Antenna Type:	Integral Antenna
Antenna Gain:	0dBi
Power Supply:	lithium battery:DC3.7V, Charge by DC5.0V

4.3 Test Environment & Test Mode

Operating Environment:	
Radiated Emissions:	
Temperature:	25.0 °C
Humidity:	55 % RH
Atmospheric Pressure:	992mbar
Radio conducted item test (RF Conducted test room):	
Temperature:	24.0 °C
Humidity:	55 % RH
Atmospheric Pressure:	992mbar
Test Mode:	
Test mode:	Keep EUT working in continuous transmitting mode with 100% duty cycle.

4.4 Description of Support Units

The EUT has been tested with associated equipment below.

1) Support equipment

Description	Manufacturer	Model No.	Certification	Supplied by
/	/	/	/	/

2) Cable

Cable No.	Description	Manufacturer	Cable Type/Length	Supplied by
/	/	/	/	/

4.5 Statement of the measurement uncertainty

The data and results referenced in this document are true and accurate.

The reader is cautioned that there may be errors within the calibration limits of the equipment and facilities.

The measurement uncertainty was calculated for all measurements listed in this test report acc. to CISPR 16 - 4 „Specification for radio disturbance and immunity measuring apparatus and methods – Part 4: Uncertainty in EMC Measurements“ and is documented in the **Shenzhen Huaxia Testing Technology Co., Ltd.** quality system acc. to DIN EN ISO/IEC 17025.

Furthermore, component and process variability of devices similar to that tested may result in additional deviation. The manufacturer has the sole responsibility of continued compliance of the device.

Hereafter the best measurement capability for CQA laboratory is reported:

No.	Item	Uncertainty	Notes
1	Radiated Emission (Below 1GHz)	5.12dB	(1)
2	Radiated Emission (Above 1GHz)	4.60dB	(1)
3	Conducted Disturbance (0.15~30MHz)	3.34dB	(1)
4	Radio Frequency	3×10^{-8}	(1)
5	Duty cycle	0.6 %.	(1)
6	Occupied Bandwidth	1.1%	(1)
7	RF conducted power	0.86dB	(1)
8	RF power density	0.74	(1)
9	Conducted Spurious emissions	0.86dB	(1)
10	Temperature test	0.8℃	(1)
11	Humidity test	2.0%	(1)
12	Supply voltages	0.5 %.	(1)
13	Frequency Error	5.5 Hz	(1)

(1) This uncertainty represents an expanded uncertainty expressed at approximately the 95% confidence level using a coverage factor of $k=2$.

4.6 Test Location

Shenzhen Huaxia Testing Technology Co., Ltd,

1F., Block A of Tongsheng Technology Building, Huahui Road, Dalang Street, Longhua District, Shenzhen, China

4.7 Test Facility

- **A2LA (Certificate No. 4742.01)**

Shenzhen Huaxia Testing Technology Co., Ltd., Shenzhen EMC Laboratory is accredited by the American Association for Laboratory Accreditation(A2LA). Certificate No. 4742.01.

- **FCC Registration No.: 522263**

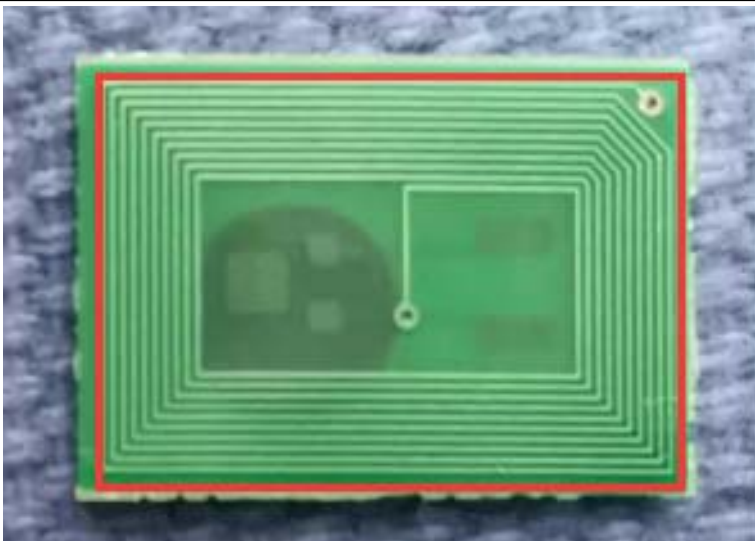
Shenzhen Huaxia Testing Technology Co., Ltd., Shenzhen EMC Laboratory has been registered and fully described in a report filed with the (FCC) Federal Communications Commission. The acceptance letter from the FCC is maintained in our files. Registration No.:522263

4.8 Equipment List

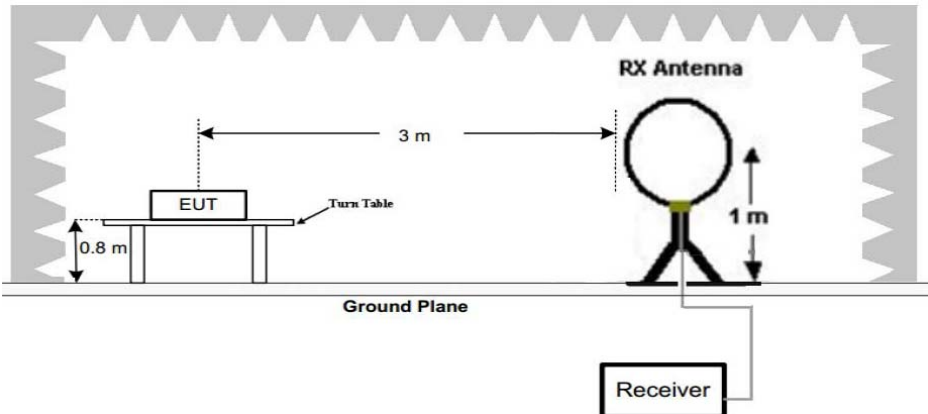
Test Equipment	Manufacturer	Model No.	Instrument No.	Calibration Date	Calibration Due Date
EMI Test Receiver	R&S	ESR7	CQA-005	2018/9/26	2019/9/25
Spectrum analyzer	R&S	FSU26	CQA-038	2018/10/28	2019/10/27
Preamplifier	MITEQ	AFS4-00010300-18-10P-4	CQA-035	2018/9/26	2019/9/25
Loop antenna	Schwarzbeck	FMZB1516	CQA-065	2018/10/28	2020/10/27
Bilog Antenna	R&S	HL562	CQA-011	2018/9/26	2020/9/25
Coaxial Cable (Below 1GHz)	CQA	N/A	C020	2018/9/26	2019/9/25
high-low temperature chamber	Auchno	OJN-9606	CQA-CB2	2018/9/26	2019/9/25

5 Test Result and Measurement Data

5.1 Antenna Requirement

Standard requirement:	47 CFR Part15 C Section 15.203
15.203 requirement:	An intentional radiator shall be designed to ensure that no antenna other than that furnished by the responsible party shall be used with the device. The use of a permanently attached antenna or of an antenna that uses a unique coupling to the intentional radiator, the manufacturer may design the unit so that a broken antenna can be replaced by the user, but the use of a standard antenna jack or electrical connector is prohibited.
EUT Antenna:	
The antenna is integral antenna. The best case gain of the antenna is 0dBi.	

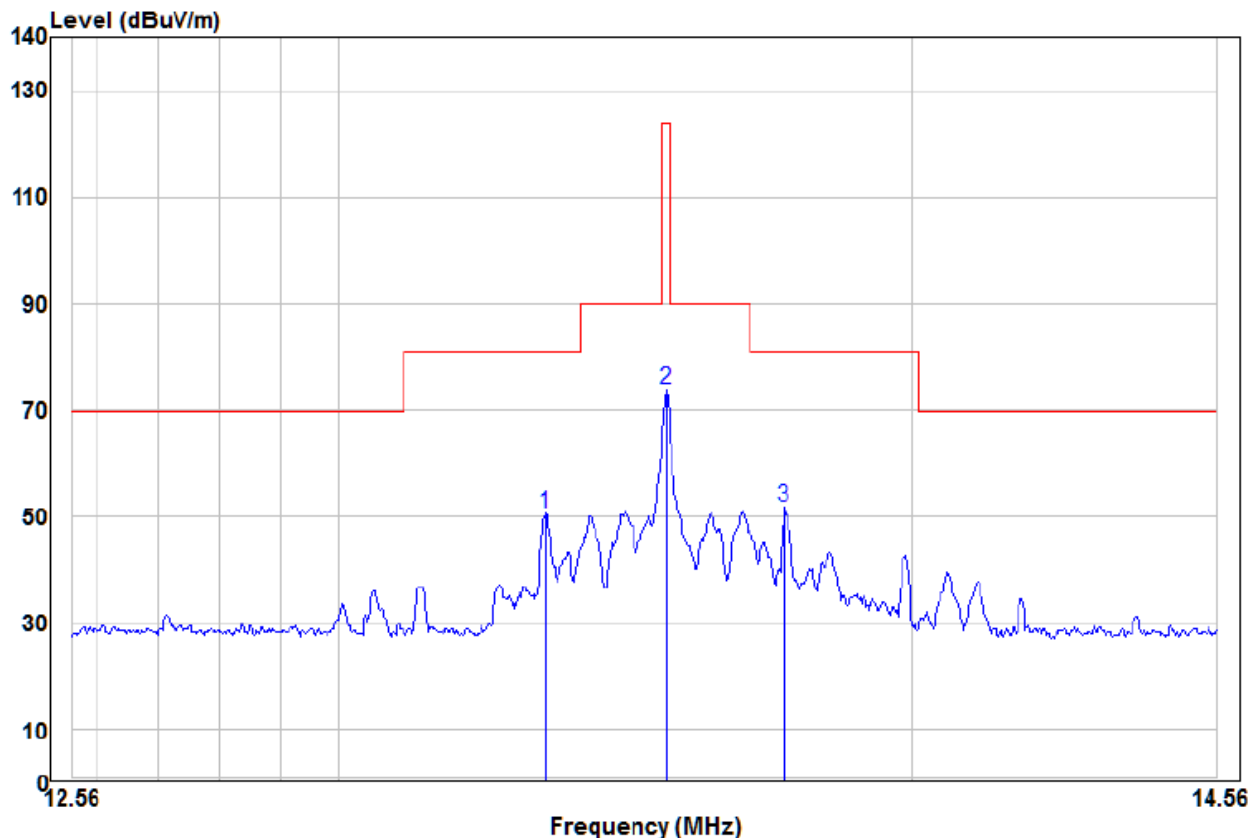
5.2 Electric Field Strength of Fundamental and Outside the Allocated bands

Test Requirement:	47 CFR Part 15, Subpart C Section 15.225(a)/(b)/(c)				
Test Method:	ANSI C63.10: 2013				
Test Site:	3m (Semi-Anechoic Chamber)				
Receiver Setup:	Frequency	Detector	RBW	VBW	Remark
	0.009MHz-0.090MHz	Peak	10kHz	30kHz	Peak
	0.009MHz-0.090MHz	Average	10kHz	30kHz	Average
	0.090MHz-0.110MHz	Quasi-peak	10kHz	30kHz	Quasi-peak
	0.110MHz-0.490MHz	Peak	10kHz	30kHz	Peak
	0.110MHz-0.490MHz	Average	10kHz	30kHz	Average
	0.490MHz -30MHz	Quasi-peak	10kHz	30kHz	Quasi-peak
Limit:	Frequency Range(MHz)	E-field Strength Limit @ 30 m (μV/m)		E-field Strength Limit @ 3 m (dBμV/m)	
	13.560 ± 0.007	15848		124	
	13.410 to 13.553 13.567 to 13.710	334		90	
	13.110 to 13.410 13.710 to 14.010	106		81	
	Note: Where the limits have been defined at one distance, and a signal level measured at another, the limits have been extrapolated using the following formula: Extrapolation(dB)=40log ₁₀ (Measurement Distance/Specification Distance)				
Test Setup:					
	Figure 1. Below 30MHz				
Test Procedure:	<div>1. The EUT was placed on the top of a rotating table 0.8 meters above the ground at a 3 meter semi-anechoic camber. The table was rotated 360 degrees to determine the position of the highest radiation.</div> <div>2. The EUT was set 3 meters away from the interference-receiving antenna, which was mounted on the top of a variable-height antenna tower.</div>				

	<ol style="list-style-type: none">3. The antenna height is varied from one meter to four meters above the ground to determine the maximum value of the field strength. Both horizontal and vertical polarizations of the antenna are set to make the measurement.4. For each suspected emission, the EUT was arranged to its worst case and then the antenna was tuned to heights from 1 meter to 4 meters (for the test frequency of below 30MHz, the antenna was tuned to heights 1 meter) and the rotatable table was turned from 0 degrees to 360 degrees to find the maximum reading.5. The test-receiver system was set to Peak Detect Function and Specified Bandwidth with Maximum Hold Mode.6. If the emission level of the EUT in peak mode was 10dB lower than the limit specified, then testing could be stopped and the peak values of the EUT would be reported. Otherwise the emissions that did not have 10dB margin would be re-tested one by one using peak, quasi-peak or average method as specified and then reported in a data sheet.7. The radiation measurements are performed in X, Y, Z axis positioning. And found the X axis positioning which it is worse case, only the test worst case mode is recorded in the report.
Test Mode:	Transmitting with ASK modulation.
Test Result:	Pass

Measurement Data

X axis positioning



	Freq	Read Level	Factor	Level	Limit Line	Over Limit	Remark	Pol/Phase
	MHz	dBuV	dB/m	dBuV/m	dBuV/m	dB		
1	13.35	30.66	19.93	50.59	81.00	-30.41	Peak	HORIZONTAL
2	13.56	53.84	19.92	73.76	124.00	-50.24	Peak	HORIZONTAL
3 pp	13.77	31.74	19.92	51.66	81.00	-29.34	Peak	HORIZONTAL

Remark:

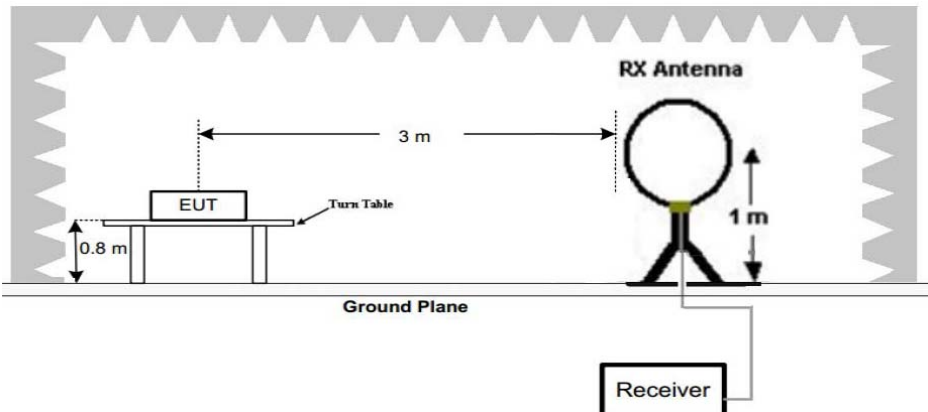
The field strength is calculated by adding the Antenna Factor, Cable Factor & Preamplifier. The basic equation with a sample calculation is as follows:

Factor= Antenna Factor + Cable Factor – Preamplifier Factor,

Level = Read Level + Factor,

Over Limit=Level-Limit Line.

5.3 Radiated Emissions

Test Requirement:	47 CFR Part 15C Section 15.209 and 15.225(d),				
Test Method:	ANSI C63.10: 2013				
Test Site:	3m (Semi-Anechoic Chamber)				
Receiver Setup:	Frequency	Detector	RBW	VBW	Remark
	0.009MHz-0.090MHz	Peak	10kHz	30kHz	Peak
	0.009MHz-0.090MHz	Average	10kHz	30kHz	Average
	0.090MHz-0.110MHz	Quasi-peak	10kHz	30kHz	Quasi-peak
	0.110MHz-0.490MHz	Peak	10kHz	30kHz	Peak
	0.110MHz-0.490MHz	Average	10kHz	30kHz	Average
	0.490MHz -30MHz	Quasi-peak	10kHz	30kHz	Quasi-peak
	30MHz-1GHz	Peak	100 kHz	300kHz	Peak
Limit:	Frequency	Field strength (microvolt/meter)	Limit (dBuV/m) @ 3 m	Remark	
	0.009MHz-0.490MHz	2400/F(kHz) @300m	128.5-93.8	Quasi-peak	
	0.490MHz-1.705MHz	24000/F(kHz) @30m	73.8-63	Quasi-peak	
	1.705MHz-30MHz	30 @30m	70	Quasi-peak	
	30MHz-88MHz	100 @3m	40.0	Quasi-peak	
	88MHz-216MHz	150 @3m	43.5	Quasi-peak	
	216MHz-960MHz	200 @3m	46.0	Quasi-peak	
	960MHz-1GHz	500 @3m	54.0	Quasi-peak	
Note: Where the limits have been defined at one distance, and a signal level measured at another, the limits have been extrapolated using the following formula: Extrapolation(dB)=40log ₁₀ (Measurement Distance/Specification Distance)					
Test Setup:	<div></div>				
Figure 1. Below 30MHz					

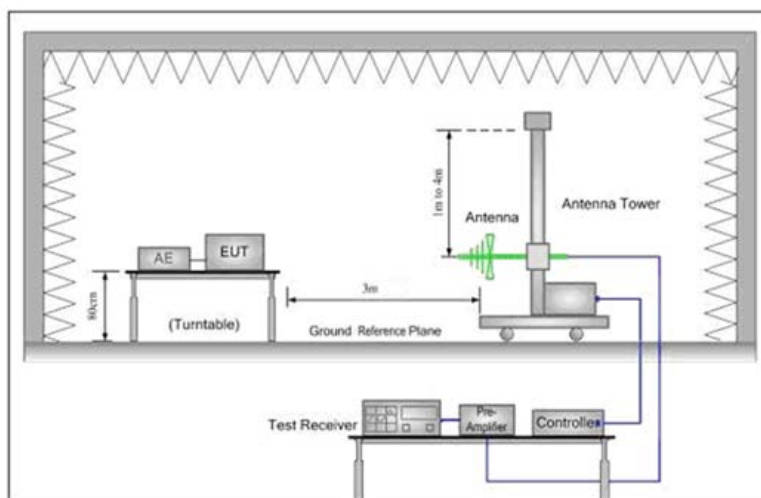


Figure 2. 30MHz to 1GHz

Test Procedure:

5. The EUT was placed on the top of a rotating table 0.8 meters above the ground at a 3 meter semi-anechoic chamber. The table was rotated 360 degrees to determine the position of the highest radiation.
6. The EUT was set 3 meters away from the interference-receiving antenna, which was mounted on the top of a variable-height antenna tower.
7. The antenna height is varied from one meter to four meters above the ground to determine the maximum value of the field strength. Both horizontal and vertical polarizations of the antenna are set to make the measurement.
8. For each suspected emission, the EUT was arranged to its worst case and then the antenna was tuned to heights from 1 meter to 4 meters (for the test frequency of below 30MHz, the antenna was tuned to heights 1 meter) and the rotatable table was turned from 0 degrees to 360 degrees to find the maximum reading.
5. The test-receiver system was set to Peak Detect Function and Specified Bandwidth with Maximum Hold Mode.
6. If the emission level of the EUT in peak mode was 10dB lower than the limit specified, then testing could be stopped and the peak values of the EUT would be reported. Otherwise the emissions that did not have 10dB margin would be re-tested one by one using peak, quasi-peak or average method as specified and then reported in a data sheet.
7. The radiation measurements are performed in X, Y, Z axis positioning. And found the X axis positioning which it is worse case, only the test worst case mode is recorded in the report.

Test Mode:

Transmitting with ASK modulation.

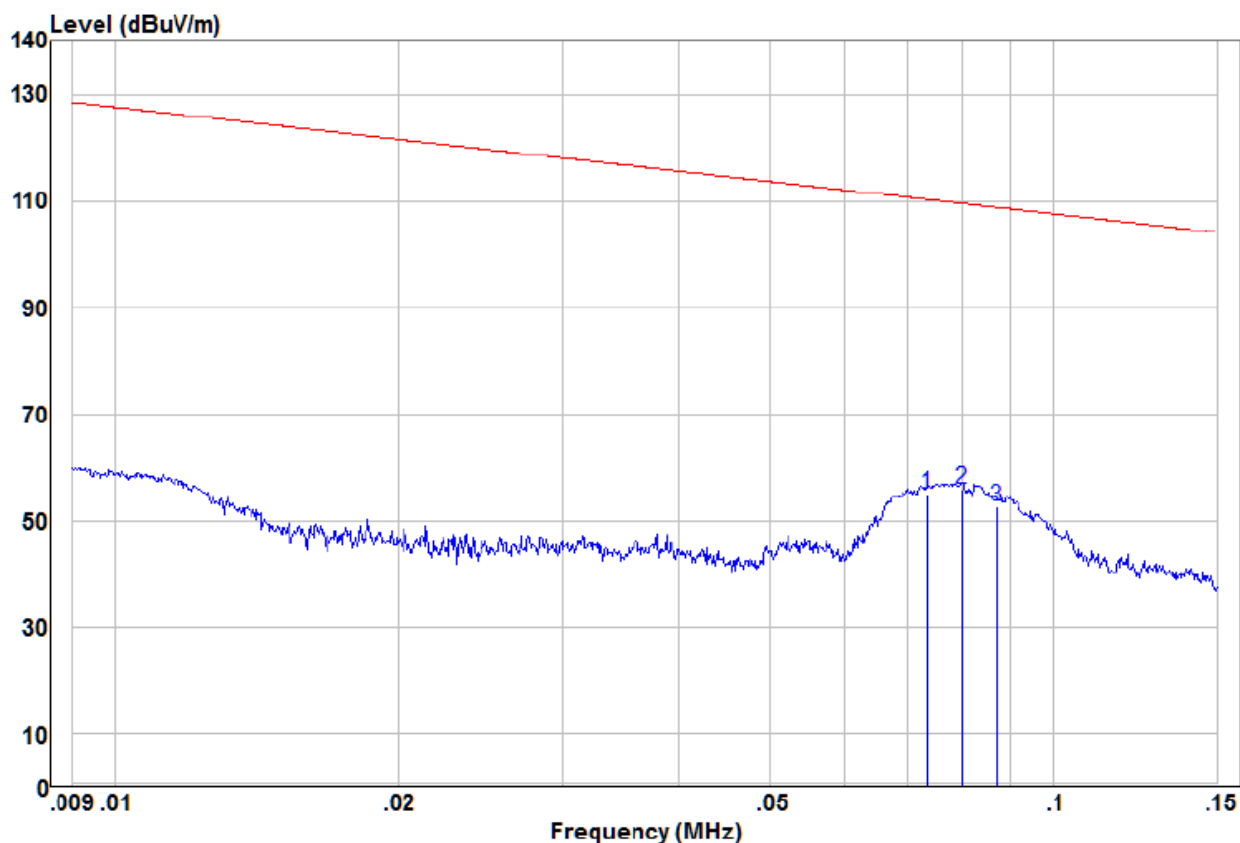
Test Result:

Pass

Measurement Data

X axis positioning

9kHz – 150KHz:



		Read			Limit	Over		
	Freq	Level	Factor	Level	Line	Limit	Remark	Pol/Phase
	MHz	dBuV	dB/m	dBuV/m	dBuV/m	dB		
1	0.07	35.14	19.69	54.83	110.28	-55.45	QP	HORIZONTAL
2	pp 0.08	36.21	19.68	55.89	109.52	-53.63	QP	HORIZONTAL
3	0.09	33.01	19.65	52.66	108.77	-56.11	QP	HORIZONTAL

Remark:

The field strength is calculated by adding the Antenna Factor, Cable Factor & Preamplifier. The basic equation with a sample calculation is as follows:

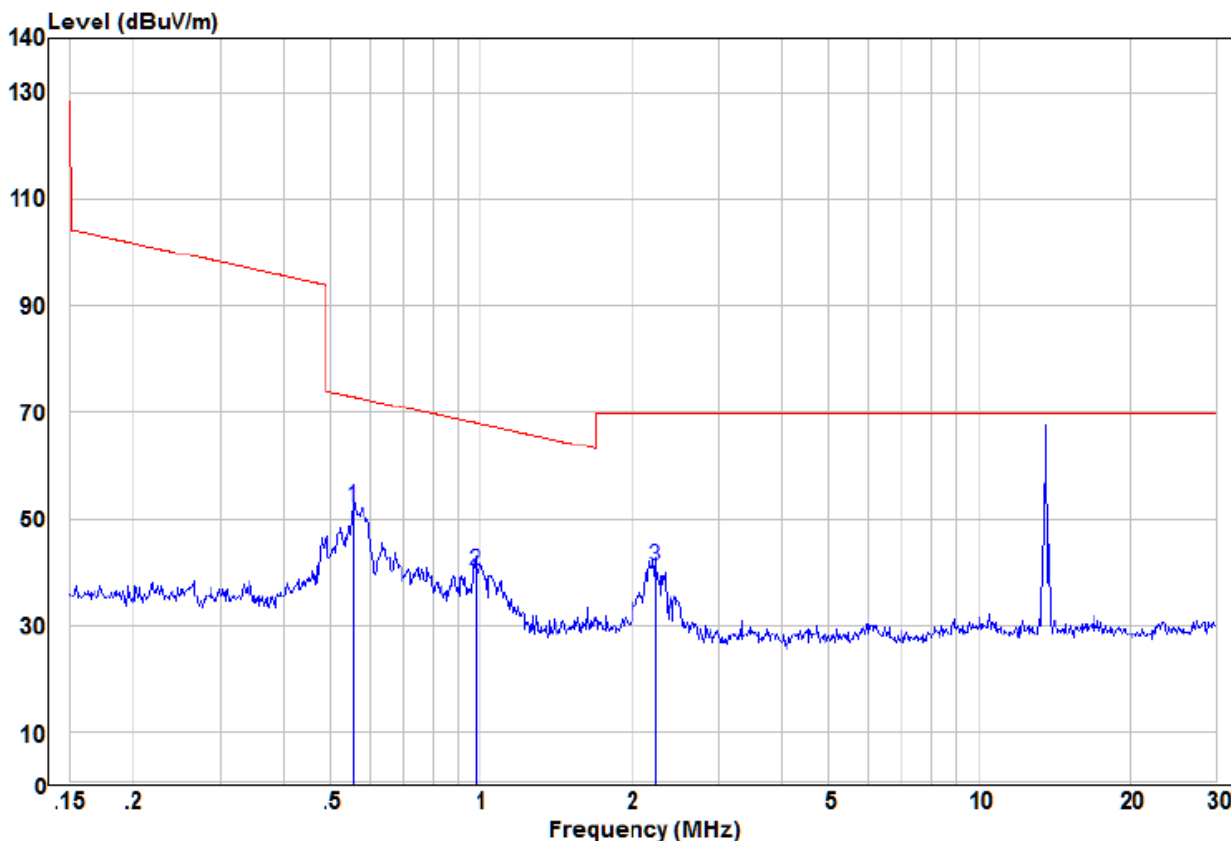
Factor= Antenna Factor + Cable Factor – Preamplifier Factor,

Level = Read Level + Factor,

Over Limit=Level-Limit Line.

X axis positioning

150KHz-30MHz:



		Read			Limit	Over		
	Freq	Level	Factor	Level	Line	Limit	Remark	Pol/Phase
	MHz	dBuV	dB/m	dBuV/m	dBuV/m	dB		
1	pp	0.56	32.11	19.73	51.84	72.72	-20.88 QP	HORIZONTAL
2		0.97	20.16	19.89	40.05	67.85	-27.80 QP	HORIZONTAL
3		2.24	20.79	19.97	40.76	69.50	-28.74 QP	HORIZONTAL

Remark:

The field strength is calculated by adding the Antenna Factor, Cable Factor & Preamplifier. The basic equation with a sample calculation is as follows:

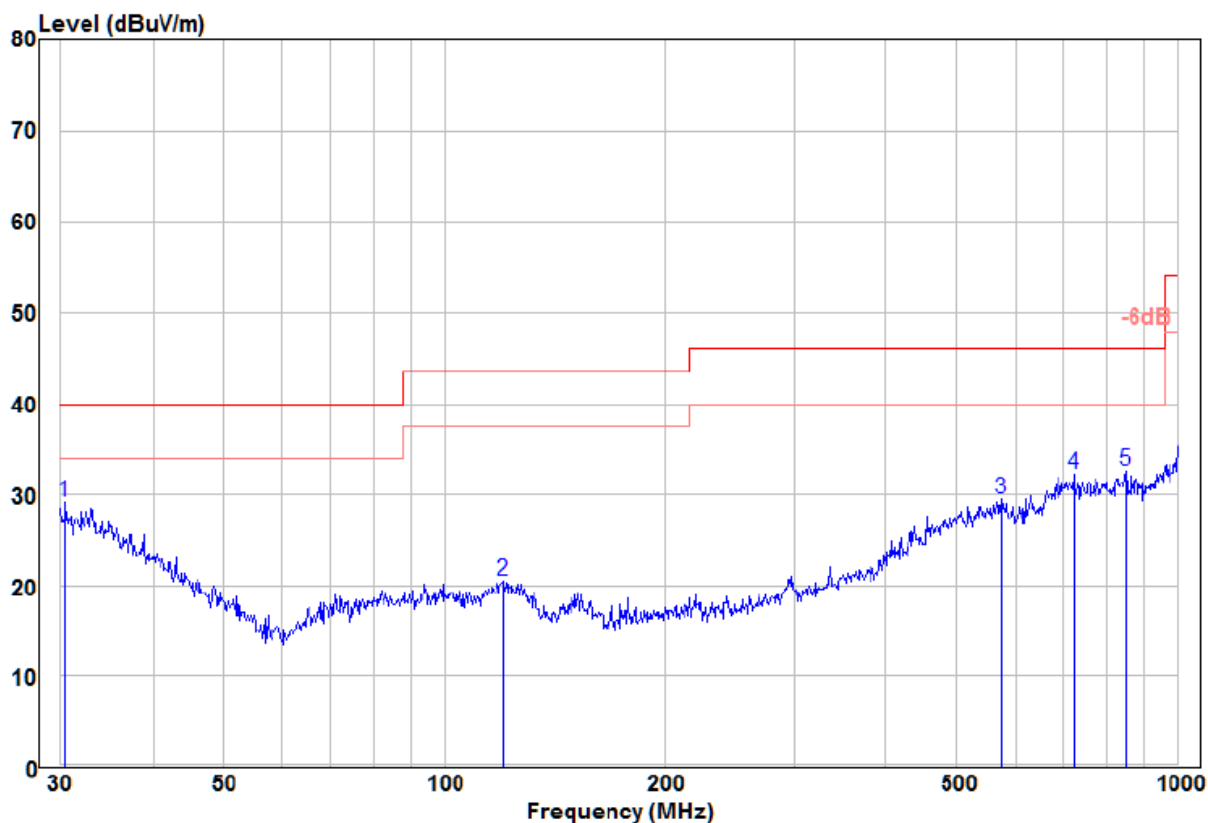
Factor= Antenna Factor + Cable Factor – Preamplifier Factor,

Level = Read Level + Factor,

Over Limit=Level-Limit Line.

30MHz-1GHz

Horizontal



	Read			Limit	Over		
	Freq	Level	Factor	Level	Line	Limit	Remark
	MHz	dBuV	dB/m	dBuV/m	dBuV/m	dB	Pol/Phase
1	pp	30.42	10.91	18.26	29.17	40.00	-10.83
2		120.70	9.82	10.67	20.49	43.50	-23.01
3		574.63	11.44	18.04	29.48	46.00	-16.52
4		721.73	12.03	20.23	32.26	46.00	-13.74
5		848.06	11.98	20.56	32.54	46.00	-13.46
							HORIZONTAL
							HORIZONTAL
							HORIZONTAL
							HORIZONTAL
							HORIZONTAL

Remark:

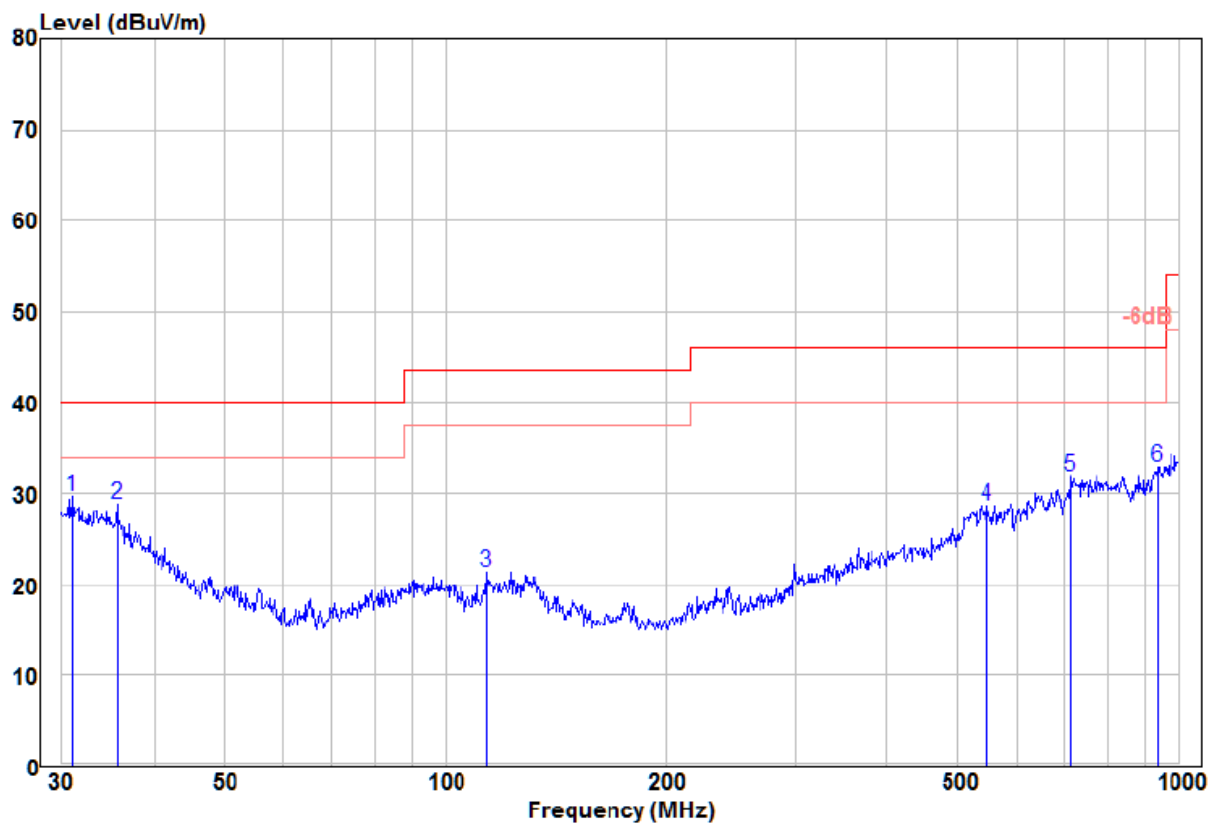
The field strength is calculated by adding the Antenna Factor, Cable Factor & Preamplifier. The basic equation with a sample calculation is as follows:

Factor= Antenna Factor + Cable Factor – Preamplifier Factor,

Level = Read Level + Factor,

Over Limit=Level-Limit Line.

Vertical



		Read			Limit	Over		
	Freq	Level	Factor	Level	Line	Limit	Remark	Pol/Phase
	MHz	dBuV	dB/m	dBuV/m	dBuV/m	dB		
1	pp	30.96	11.56	18.06	29.62	40.00	-10.38	VERTICAL
2		35.62	12.39	16.38	28.77	40.00	-11.23	VERTICAL
3		113.71	10.94	10.37	21.31	43.50	-22.19	VERTICAL
4		549.02	10.82	17.79	28.61	46.00	-17.39	VERTICAL
5		714.17	11.78	20.19	31.97	46.00	-14.03	VERTICAL
6		935.55	11.64	21.34	32.98	46.00	-13.02	VERTICAL

Remark:

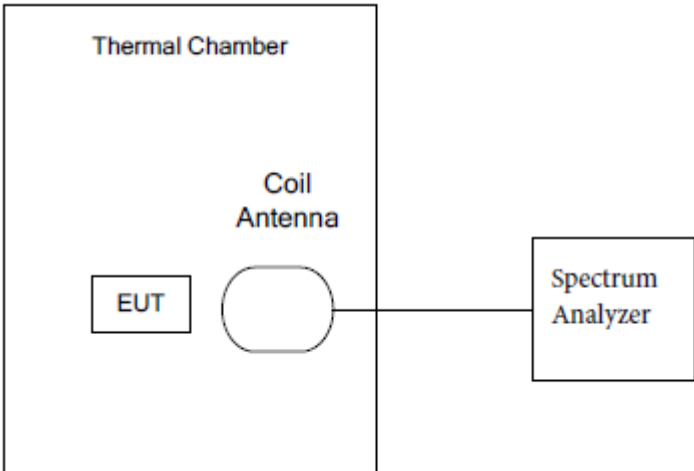
The field strength is calculated by adding the Antenna Factor, Cable Factor & Preamplifier. The basic equation with a sample calculation is as follows:

Factor= Antenna Factor + Cable Factor – Preamplifier Factor,

Level = Read Level + Factor,

Over Limit=Level-Limit Line.

5.4 Frequency Stability

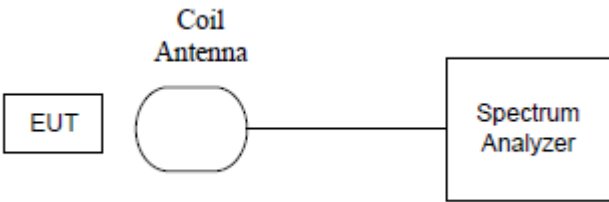
Test Requirement:	47 CFR Part 15 C Section 15.225(e)
Test Method:	ANSI C63.10: 2013
Test Setup:	 <p>The diagram shows a Thermal Chamber containing an EUT (Equipment Under Test) and a Coil Antenna. The Coil Antenna is connected to a Spectrum Analyzer.</p>
Frequency Range:	Operation within the band 13.110-14.010 MHz
Requirements:	The frequency tolerance of the carrier signal shall be maintained within $\pm 0.01\%$ of the operating frequency over a temperature variation of -20 degrees to $+50$ degrees C at normal supply voltage, and for a variation in the primary supply voltage from 85% to 115% of the rated supply voltage at a temperature of 20 degrees C. For battery operated equipment, the equipment tests shall be performed using a new battery.
Method of Measurement:	The EUT was placed in an environmental test chamber and powered such that control element received normal voltage and the transmitter provided maximum RF output.
Test Result:	The unit does meet the FCC Part 15 C Section 15.225(e) requirements.

Test Frequency: 13.56MHz			Temperature:20℃	
Supply Voltage (V) DC	Test Result (MHz)	Deviation (kHz)	Limit ±0.01% (kHz)	Result
3.7	13.55976	-0.24	1.3560	Pass
4.35	13.55972	-0.28	1.3560	Pass
3.4	13.55974	-0.26	1.3560	Pass

Test Frequency: 13.56MHz			Normal Voltage:3.7Vdc	
Temperature (℃)	Test Result (MHz)	Deviation (kHz)	Limit ±0.01% (kHz)	Result
-20	13.55975	-0.25	1.3560	Pass
-10	13.55978	-0.22	1.3560	
0	13.55973	-0.27	1.3560	
10	13.55976	-0.24	1.3560	
20	13.55973	-0.27	1.3560	
30	13.55972	-0.28	1.3560	
40	13.55970	-0.30	1.3560	
50	13.55973	-0.27	1.3560	

Note: Deviation (KHz) = (Test Result-13.56MHz)*1000

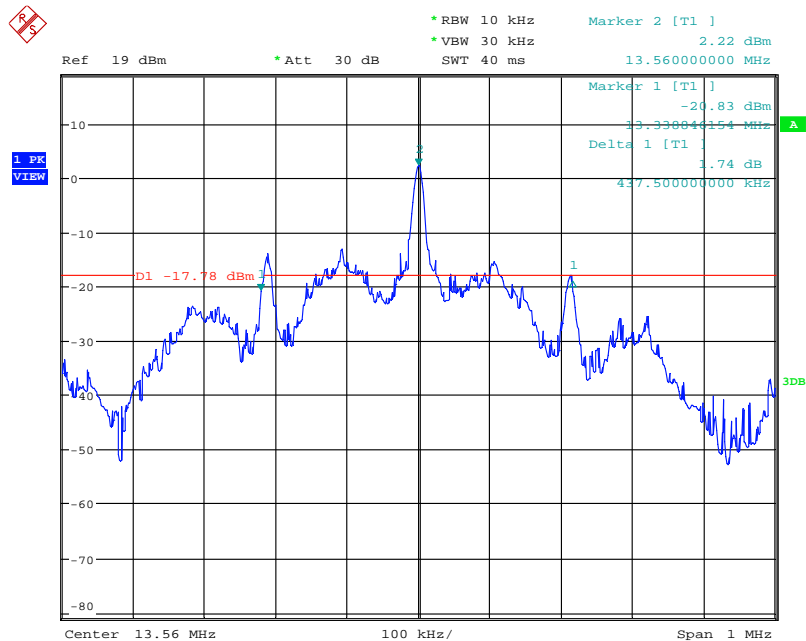
5.5 20dB Occupied Bandwidth

Test Requirement:	47 CFR Part 15 C Section 15.215 (C)
Test Method:	ANSI C63.10: 2013
Test Setup:	
Frequency Range:	Operation within the band 13.110 – 14.010 MHz
Requirements:	Intentional radiators operating under the alternative provisions to the general emission limits, as contained in §15.217 through §15.257 and in subpart E of this part, must be designed to ensure that the 20 dB bandwidth of the emission is contained within the frequency band designated in the rule section under which the equipment is operated. The requirement to contain the 20 dB bandwidth of the emission within the specified frequency band includes the effects from frequency sweeping, frequency hopping and other modulation techniques that may be employed as well as the frequency stability of the transmitter over expected variations in temperature and supply voltage. If frequency stability is not specified in the regulations, it is recommended that the fundamental emission be kept within at least the central 80% of the permitted band in order to minimize the possibility of out-of-band operation.
Limit:	For 13.56 MHz the permitted frequency band is 14kHz, so the limit is 11.2 kHz.

Test Data:

20dB bandwidth (MHz)	FL (MHz)	FH (MHz)	Limit(MHz)	Result
0.4375	13.1225	13.9975	13.110 – 14.010	Pass

Test plot as follows:

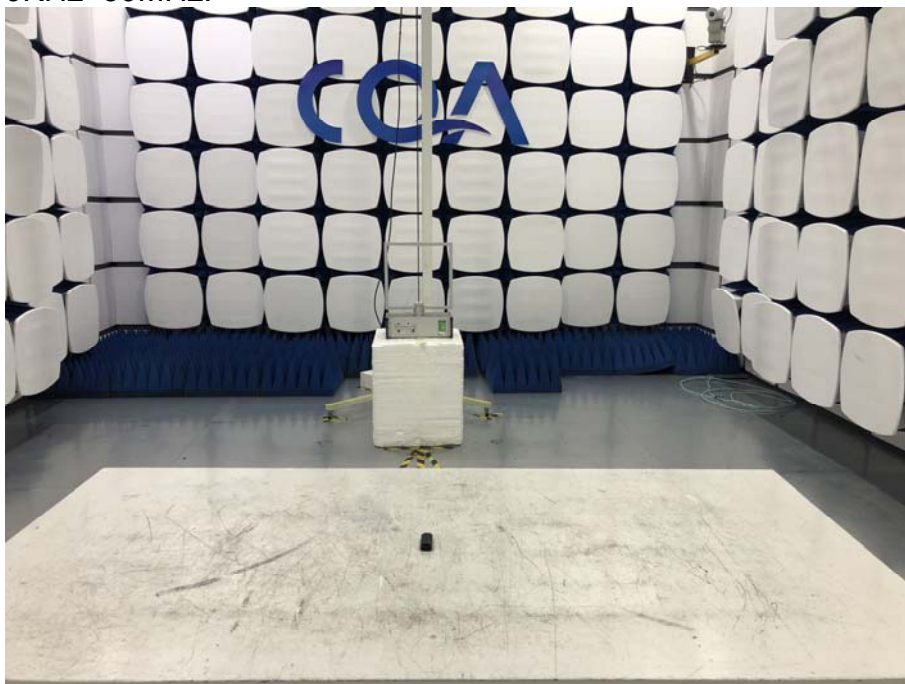


Date: 6.SEP.2019 17:09:44

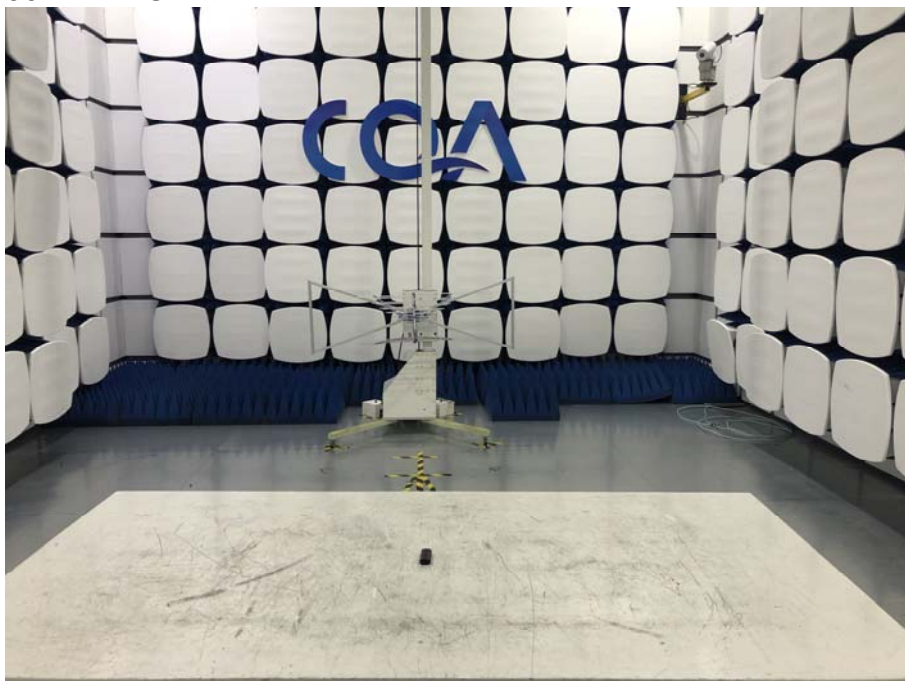
6 Photographs - EUT Test Setup

6.1 Radiated Emission

9KHz~30MHz:



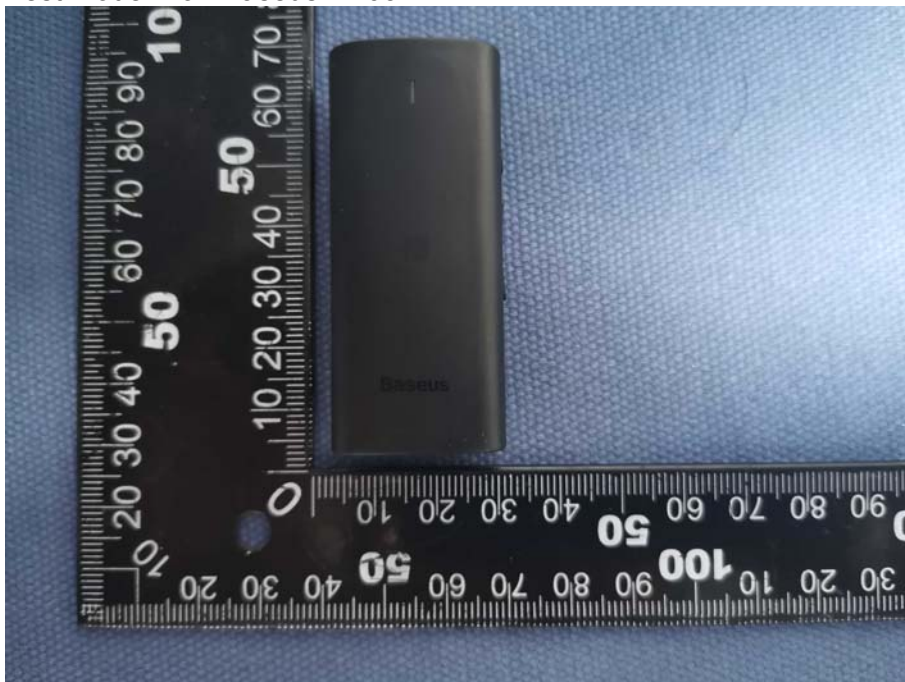
30MHz~1GHz:

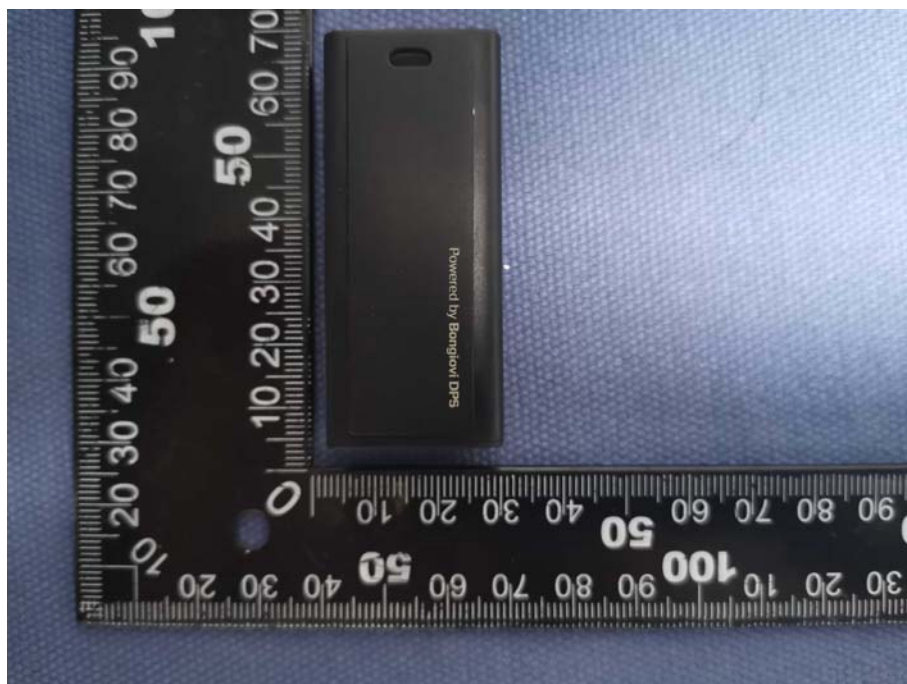


7 Photographs - EUT Construction Details

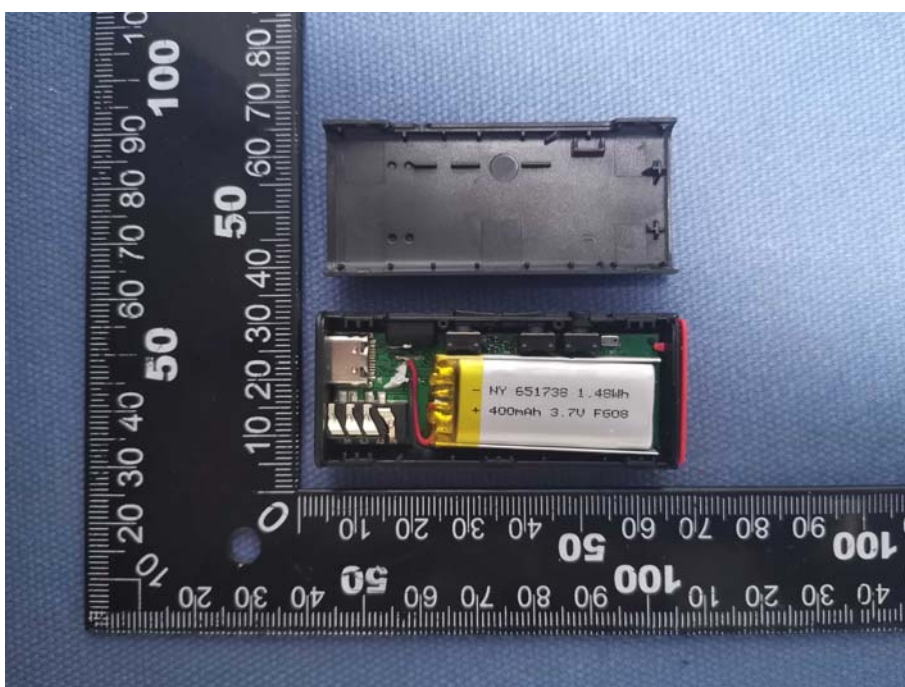
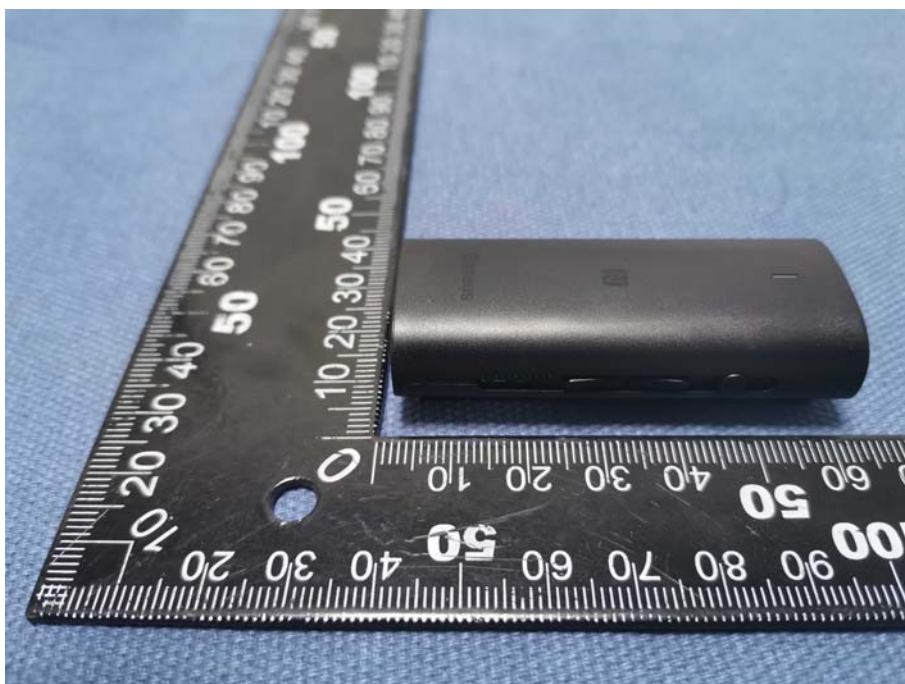


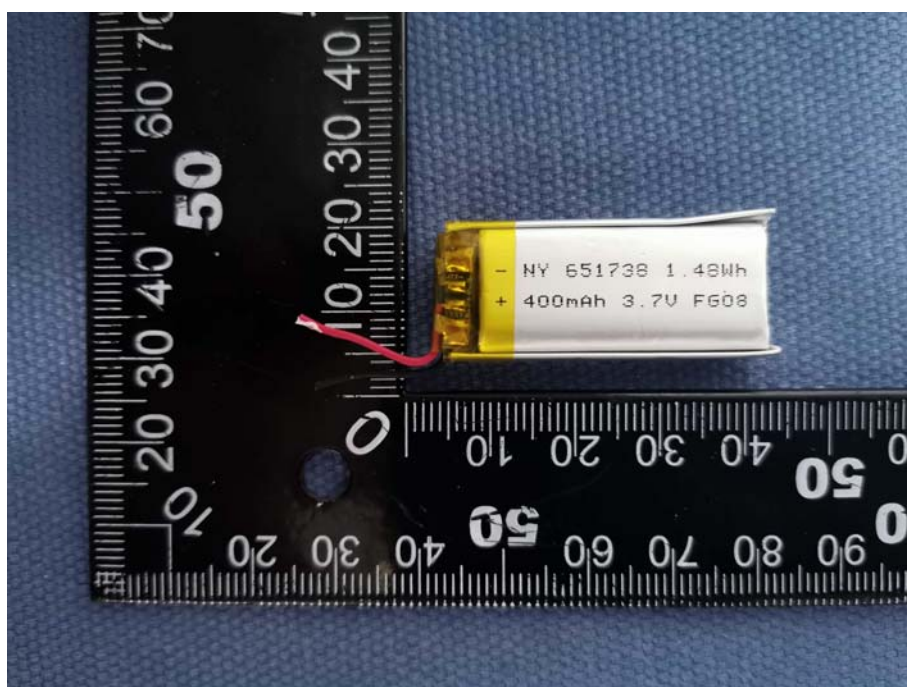
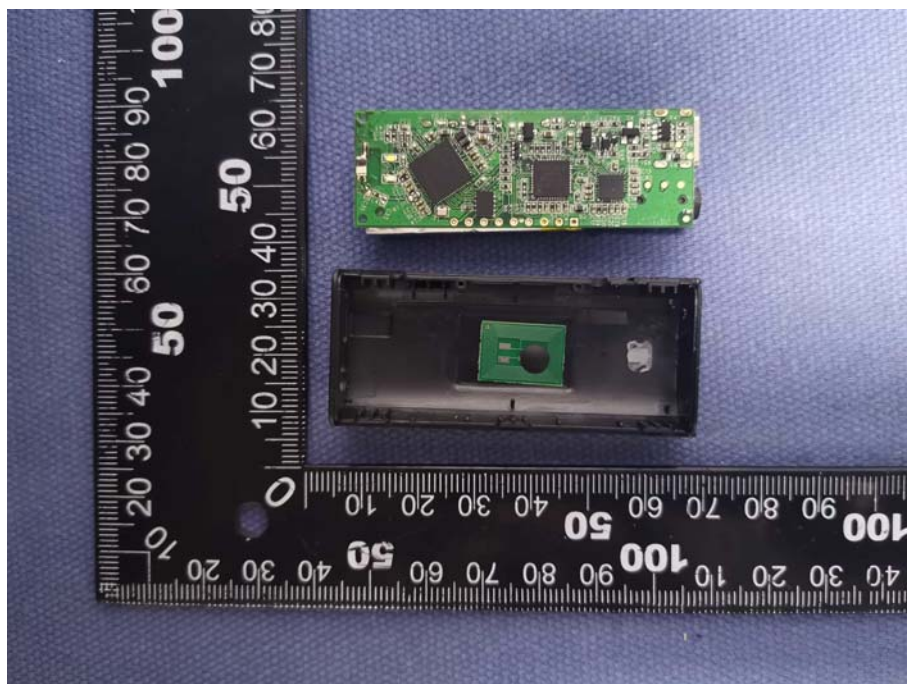
Test Model No.: Baseus BA03

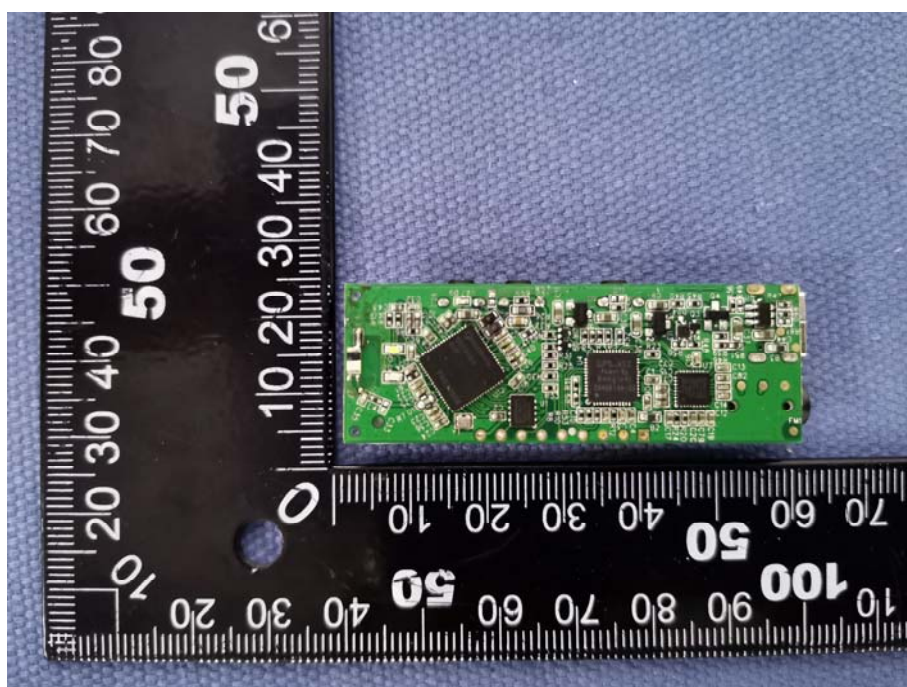
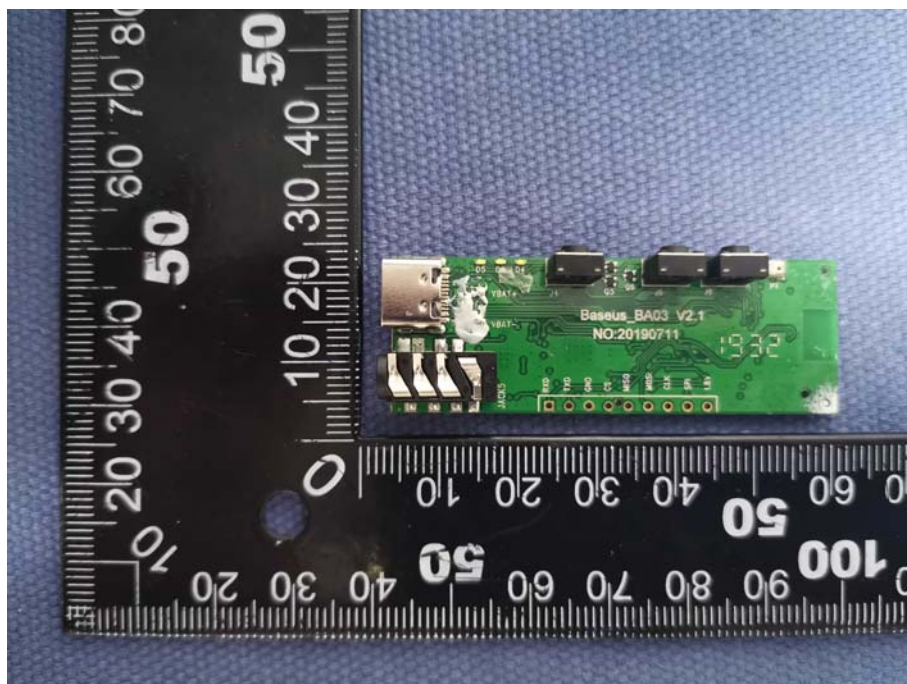


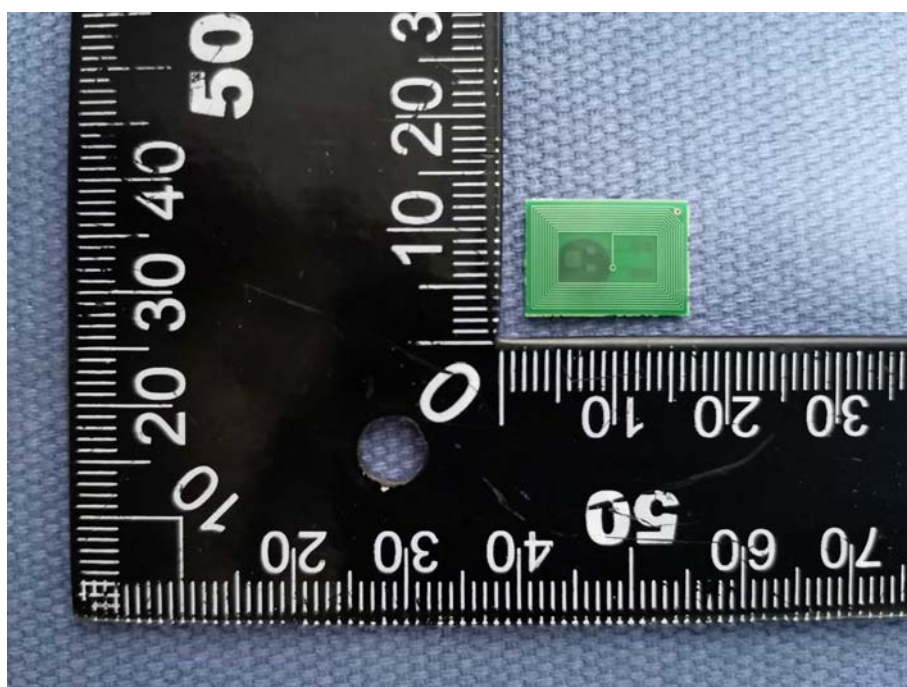
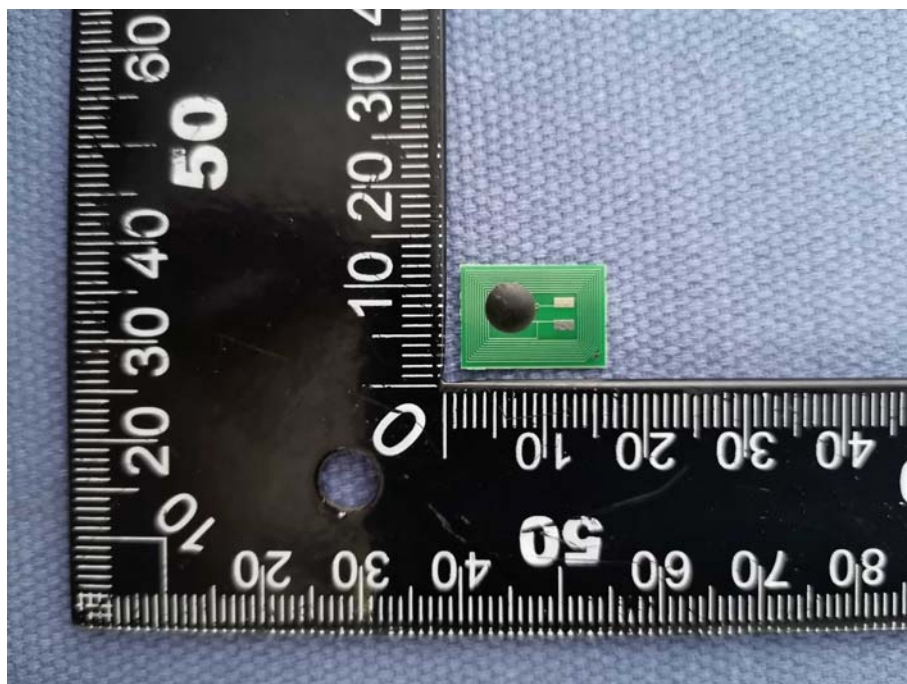














The End