

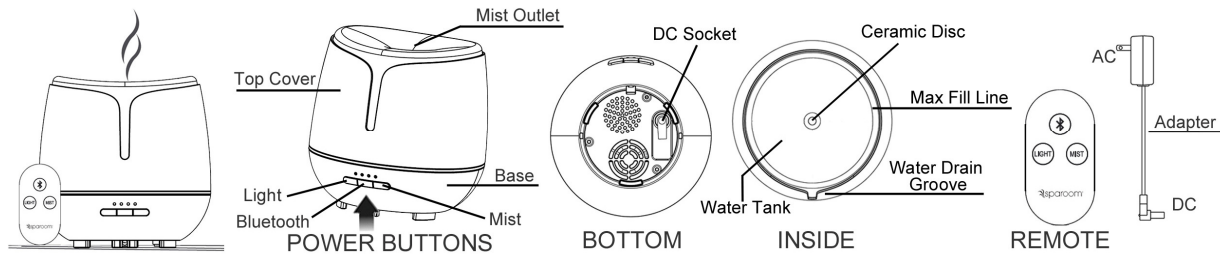
# ProAir™

## Ultrasonic Essential Oil Diffuser with *Bluetooth®*

### INSTRUCTIONS

Aroma diffuser X029A

#### PARTS



#### FEATURES

Set your spa experience to music. Connect your device via *Bluetooth®* technology and let your playlist carry you away.

1. Water Capacity: 300 mL (10.1 fl oz)
2. Coverage Area: Up to 400 sq ft
3. Continuous Run Time: Up to 8 hours
4. Mist Shut-Off Timer: 60, 120, or 180 minutes (1, 2, or 3 hours)
5. Light Mode: Bright white, soft white, or OFF
6. Wireless Music through *Bluetooth®* Speaker Sound System
7. Automatic safety shut-off (Mist only)
8. Remote Control Operation Distance: Up to 15 feet
9. Power: AC adapter included, c UL us approved

#### CARE & MAINTENANCE

Only use the power cord supplied with the unit. Always remove the power cord before cleaning. Essential oil should not come in contact with the exterior surface of the unit.

##### TO CLEAN:

\* SpaRoom® KLENZOR™ tablets may be used to renew diffuser to like-new condition.

Remove Top Cover. Empty the water from the Water Drain Groove. The Ceramic Disc should not come in contact with any hard or sharp objects. To remove possible buildup, gently use a cotton swab dipped in white vinegar to wipe out the inside.

Dry with a soft cloth to avoid mineral buildup. Do not use strong cleaning agents.

#### INSTRUCTIONS FOR USE

Place diffuser on a flat, water-resistant surface.

1. Remove the Top Cover from the Base.
2. Insert the Adapter's DC connector into the DC Socket on bottom of the unit. Then plug the Adapter into an electrical wall outlet.
3. Fill the Water Tank with tap water up to the Max Fill Line. Do not overfill or mist output may be low. Add 4 to 6 drops of essential oil to the Water Tank.
4. Replace the Top Cover onto the Base.
5. **Button Functions:**

##### Left Side – Light:

- 1<sup>st</sup> Push = Bright white light (beep will sound)
- 2<sup>nd</sup> Push = Soft white light (beep will sound)
- 3<sup>rd</sup> Push = Turns lights OFF (beep will sound)

##### Right Side – Mist:

- 1<sup>st</sup> Push = Timer set for 60 minutes continuous mist (beep will sound)
- 2<sup>nd</sup> Push = Timer set for 120 minutes continuous mist (beep will sound)
- 3<sup>rd</sup> Push = Timer set for 180 minutes continuous mist (beep will sound)
- 4<sup>th</sup> Push = Continuous mist up to 6 hours (beep will sound)
- 5<sup>th</sup> Push = Turns the mist function OFF

*Press and hold at any time to turn mist off (2 beeps will sound)*

##### Middle – *Bluetooth®*:

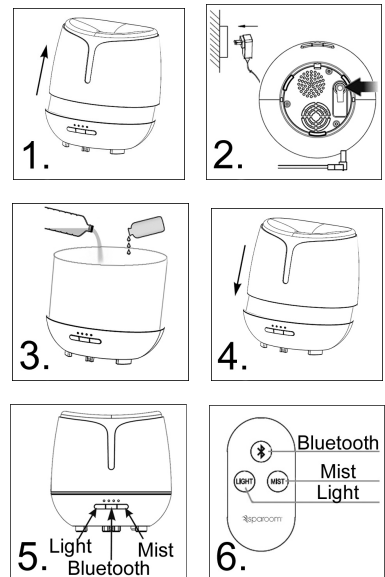
For music, turn on the wireless technology on your device. Press the *Bluetooth®* Button on the ProAir™ and hold for 2 seconds to turn on. Press again if you want to turn the *Bluetooth®* technology off. ProAir's *Bluetooth®* connection name will appear on your device as "ProAir Music." Click on this name to connect the unit to your *Bluetooth®* enabled device.

##### 6. Remote:

The Remote buttons function exactly the same as *Bluetooth®*, Mist and Light Buttons on the diffuser.

#### NOTES:

- The unit will stop misting when water level becomes too low. Note that the light must be manually turned off.
- Disconnect Adapter from electrical outlet when not in use.



This device complies with part 15 of the FCC Rules. Operation is subject to the following two conditions:

(1) This device may not cause harmful interference, and (2) this device must accept any interference received, including interference that may cause undesired operation.

Note: This equipment has been tested and found to comply with the limits for a Class B digital device, pursuant to part 15 of the FCC Rules. These limits are designed to provide reasonable protection against harmful interference in a residential installation. This equipment generates, uses and can radiate radio frequency energy and, if not installed and used in accordance with the instructions, may cause harmful interference to radio communications. However, there is no guarantee that interference will not occur in a particular installation. If this equipment does cause harmful interference to radio or television reception, which can be determined by turning the equipment off and on, the user is encouraged to try to correct the interference by one or more of the following measures:

- Reorient or relocate the receiving antenna.
- Increase the separation between the equipment and receiver.
- Connect the equipment into an outlet on a circuit different from that to which the receiver is connected.
- Consult the dealer or an experienced radio/TV technician for help.

Note: The Grantee is not responsible for any changes or modifications not expressly approved by the party responsible for compliance. such changes or modifications could void the user's authority to operate the equipment.

This device complies with part 18 of the FCC Rules.

This device can generate radio frequency energy, which could cause interferences to such products as radio, TV, baby monitor, cordless phone, Bluetooth, wireless router, etc., which can be confirmed by turning this product off and on. If present, the user is encouraged to try to correct by taking one or more of the following countermeasures:

- (1) Increase the spacing distance between the device and other product receiving the interference.
- (2) If possible, use a properly installed receiver antenna and/or reorient the receiving antenna of the other product receiving the interference.
- (3) Plug the device into a different outlet from the other product receiving the interference.

Rated Power: 15.6W

Ultra sonic frequency: 2.4MHz