

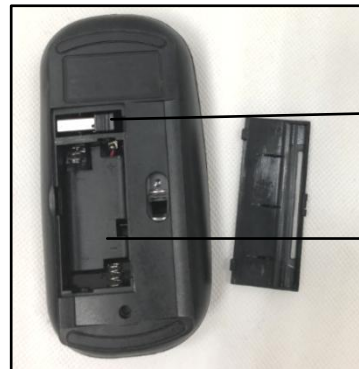
**INSTRUCTIONS**



(1)



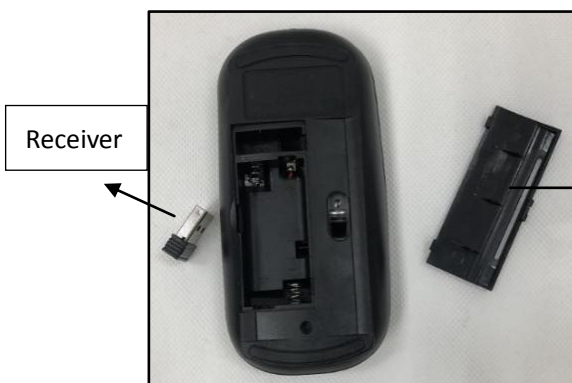
(2)



(3)

Receiver

Requires 2 AAA  
Batteries (not  
included)



Receiver

Battery Cover

(4)



(5)

- (1) Front view of wireless mouse (2.4 Ghz)
- (2) Back view of mouse; location of battery cover
- (3) Open the battery cover; receiver located above battery compartment
- (4) Remove receiver from compartment
- (5) Plug receiver into USB port

**Battery Installation Instructions:**

1. Remove cover and insert 2 AAA batteries (not included) following the polarity markings (+/-) inside the battery compartment.
2. Make sure receiver is plugged into the USB port.
3. Place the battery cover to close battery compartment.

**CAUTION:**

- BATTERIES SHOULD BE REMOVED AND REPLACED BY ADULTS ONLY. Keep away from children.
- Do NOT mix old and new batteries.
- Do NOT mix alkaline, standard (carbon-zinc) or rechargeable (ni-cad, ni-mh, etc.) batteries.
- Be sure to check the expiration date because fresh batteries will ensure uninterrupted usage/enjoyment of the product.
- To avoid explosion or leakage, do not dispose of batteries in a fire or attempt to charge standard or alkaline batteries (non-rechargeable batteries).
- Remove batteries when not in use for a long period. Always remove exhausted batteries from the product. The supply terminals are not to be short-circuited.
- Do dispose of batteries according to the local law and regulations of your region.

**FCC Statement :**

This equipment has been tested and found to comply with the limits for a Class B digital device, pursuant to part 15 of the FCC Rules. These limits are designed to provide reasonable protection against harmful interference in a residential installation. This equipment generates, uses and can radiate radio frequency energy and, if not installed and used in accordance with the instructions, may cause harmful interference to radio communications. However, there is no guarantee that interference will not occur in a particular installation. If this equipment does cause harmful interference to radio or television reception, which can be determined by turning the equipment off and on, the user is encouraged to try to correct the interference by one or more of the following measures:

- Reorient or relocate the receiving antenna.
- Increase the separation between the equipment and receiver.
- Connect the equipment into an outlet on a circuit different from that to which the receiver is connected.
- Consult the dealer or an experienced radio/TV technician for help.

Caution: Any changes or modifications to this device not explicitly approved by manufacturer could void your authority to operate this equipment.

This device complies with part 15 of the FCC Rules. Operation is subject to the following two conditions: (1) This device may not cause harmful interference, and (2) this device must accept any interference received, including interference that may cause undesired operation.

**RF Exposure Information**

The device has been evaluated to meet general RF exposure requirement. The device can be used in portable exposure condition without restriction.