

SSD-100 User Manual

Smoke & Temperature Detection



Note: Please use SSD-100 after reading all the information. In order to avoid damage to the product and to achieve the best performance.

■ Product Overview

It is a stand alone smoke and temperature detector designed to be used in various industrial production lines such as distribution boards.

1. Smoke Detection Method (Light Scattering)

Alarm function to notify of fire by detecting smoke caused by fire

2. Stand Alone alarm

Detecting Smoke and sounds a Smoke alarm to notify people of the occurrence of a fire

3. Built-in Temperature sensor (PT100)

■ Package Content



[Product Body]



[Screw hole cap 2pcs]

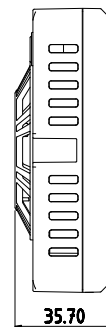
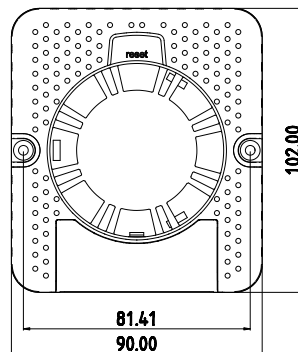
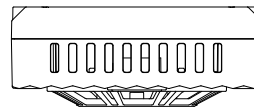
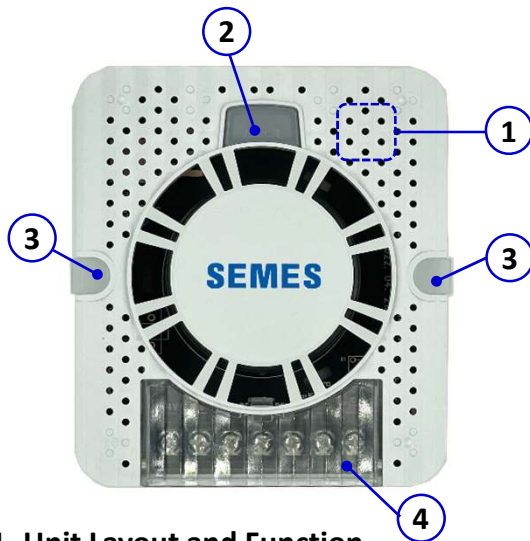


[Screw 2pcs]



[User manual]

■ Product Function and How To Use



1. Unit Layout and Function

No	Description	Function
1	Alarm Buzzer	Alarm Sounds in case of Fire (1second on/1second off)
2	Reset Switch / LED	Turn alarm sounds off or operation testing Status display LED
3	Screw Cap	Screw Cap
4	Input / Output Port	DC 24V Voltage input. Relay input / output & temperature sensor_PT100 input / output

2. Relay Operation

Status	Relay Contact	Operating
Power on	B contact	Normal
Power off	A contact	B → A contact
Smoke Alarm On	A contact	B → A contact
Reset Alarm sound	B contact	A → B contact

3. LED Operation

LED Indication	Status Description
Green LED ON	Normal Status
Red LED Blinking	Smoke Detection (Red LED 1second on/1second off)
Red LED ON	Short Key : Red LED On until Alarm sound Off Long Key : maintenance mode

4. General Operation (Mode Description)

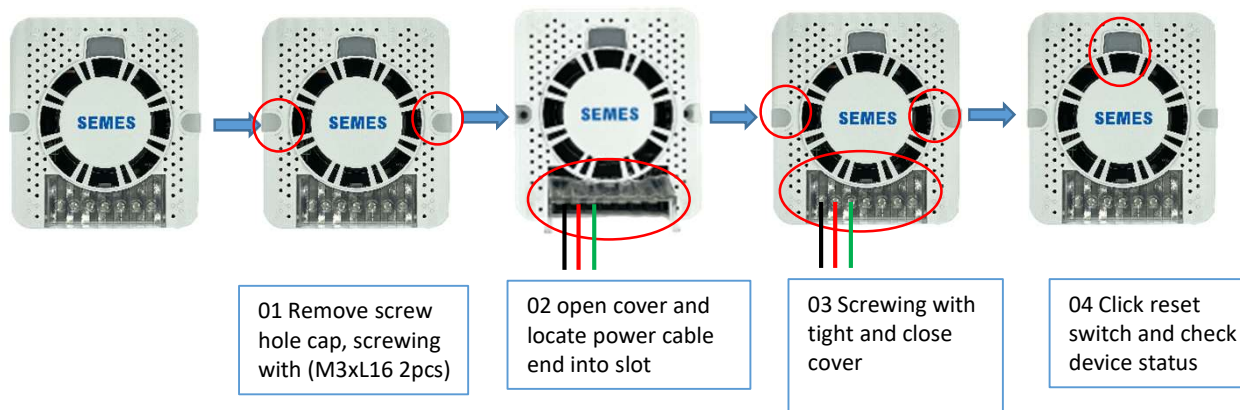
- 1) (Smoke monitoring mode) Once power is applied properly with correct power connection, Green LED will be ON and Relay is connected to B contact.
- 2) (Smoke detection mode) When device detect smoke by fire, Red LED will be blinking and sounds alarm.
- 3) Operator click the Reset switch in order to reset device which is in Smoke detection mode,. Alarm sounds will be OFF and Red LED will be ON until device come to smoke monitoring mode back. In Smoke monitoring mode, LED will change to Green color

5. Maintenance mode

- 1) Push reset switch for 3 seconds in Smoke monitoring mode, Red LED will be On and alarm sounds.
- 2) Once click reset switch again, Alarm sound will be off and LED will be changed green color.

■ Installation instruction

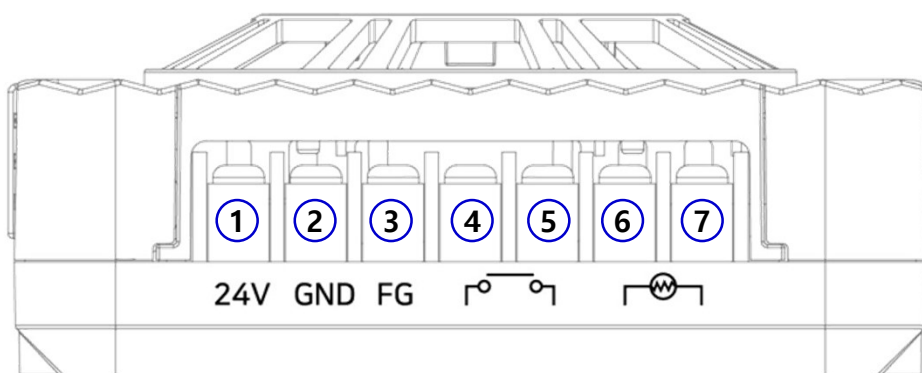
1. How to install



※ Caution) If no response after click reset switch, please check power cable wiring and connection.

If connection is correct, please contact to product agent for help.

2. Input/output pin-map



No	name	Connection
1	24V	DC24V connect (Less than 30 m)
2	GND	DC GND connect
3	FG	Ground
4	R1	Relay input
5	R2	Relay B contact
6	PT1	PT100 A terminal
7	PT2	PT100 B terminal

■ Caution

1. When wiring to the terminal block, please be careful not to allow foreign objects such as dust or wire sheath to enter the connection terminals and the inside of the product.
2. When mounting and wiring, make sure to disconnect the external power source.
3. Please use device in the prescribed temperature range. Otherwise, the product may malfunction and break.
4. Please use within the rated voltage and current ranges. When device used outside of prescribed range. the product may malfunction and break.
5. Please read the product manual carefully and check the product rating, connection diagram, appearance specifications, etc.
6. This product is an optical smoke detector that avoids dusty places, areas affected by wind, and places where the lighting shines directly on the product, etc., and please carefully monitor the installation environment and install and use it.
 - Use by installing at a distance of 60 cm from the wall.
 - Install and use in a place that is not affected by air conditioners and fans.
 - Install and use at a distance of at least 1 meter from the lights
7. In the event of an abnormality in the product, do not arbitrarily disassemble it and exchange it at the place of purchase.
8. When using the product, please take care not to get debris around the product and on the exterior of the smoke chamber in the product. (This causes malfunctions.)
9. Test in check mode every 1 month to make sure there are no abnormalities in the product.

■ Specification

No	Category	Description
1	Model Number	SSD-100
2	Model Type	DC 24V, Photo-electric type2, non-waterproof
3	Power	DC 24V / current 50mA
4	Operating condition	-10°C~60°C / Humidity 10%~ less than 90%
5	Alarm sounds	Bigger than 85dB
6	Detection Method	Photo-electric (Light-scattering)
7	Temperature sensor	PT100
8	Dimension / Weight	90.0 x 102 x 35.7 (mm) / 130g
9	Certification	CE, FCC, KC , KFI Report.
10	Intended use environment	Industry

■ Warning Information

This equipment has been tested and found to comply with the limits for a Class A digital device, pursuant to part 15 of the FCC Rules. These limits are designed to provide reasonable protection against harmful interference when the equipment is operated in a commercial environment. This equipment generates, uses, and can radiate radio frequency energy and, if not installed and used in accordance with the instruction manual, may cause harmful interference to radio communications. Operation of this equipment in a residential area is likely to cause harmful interference in which case the user will be required to correct the interference at his own expense.

This device complies with Part 15 of the FCC Rules. Operation is subject to the following two conditions:

- (1) this device may not cause harmful interference, and
- (2) this device must accept any interference received, including interference that may cause undesired operation.

Caution: Any changes or modifications not expressly approved by the party responsible for compliance could void the user's authority to operate the equipment.

■ Manufacturer and Distributor

Manufacturer	SEMES / Republic of Korea
Distributor	Bridge Builder / 010-2740-5634
After Service	02-2699-7536~7
Address	77, 4sandan 5-gil, Jiksan-eup, Seobuk-gu, Cheonan-si, Chungcheongnam-do, Republic of Korea